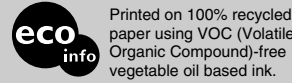


Portable IC Audio Player
Network Walkman NW-E303/E305/E307
NW-E205/E207

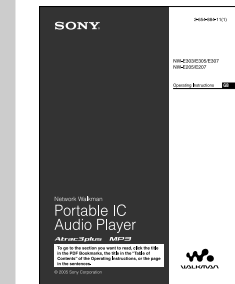
Operating Instructions

Quick Start Guide



Refer to the PDF file "Operating Instructions"

Refer to the PDF file "Operating Instructions" for more information and for troubleshooting.



How to display the PDF file "Operating Instructions"
 The PDF file "Operating Instructions" will be installed when the SonicStage software is installed. Double-click () ("NW-E200_E300 series manuals"), or click [Start] - [All Programs] - [SonicStage] on your computer.

You need Adobe Acrobat Reader 5.0 or later, or Adobe Reader software in your computer.

For other languages PDF file "Operating Instructions"
 English PDF file "Operating Instructions" are contained in the supplied CD-ROM. Die deutsche PDF-Datei mit der „Bedienungsanleitung“ ist auf der mitgelieferten CD-ROM enthalten.

El documento en español "Manual de instrucciones" en formato PDF se encuentra en el CD-ROM suministrado.

Il CD-ROM in dotazione contiene il file PDF in italiano "Istruzioni per l'uso".

O ficheiro PDF "Instruções de funcionamento" em português está no CD-ROM fornecido.

Nederlands PDF-bestand "Gebruiksaanwijzing" vindt u op de bijgeleverde CD-ROM.

Den svenska PDF-filen "Bruksanvisning" finns på den medföljande CD-ROM-skivan.

Suomenkielinen PDF-tiedosto "Käyttöohje" on toimitetulla CD-levyllä.

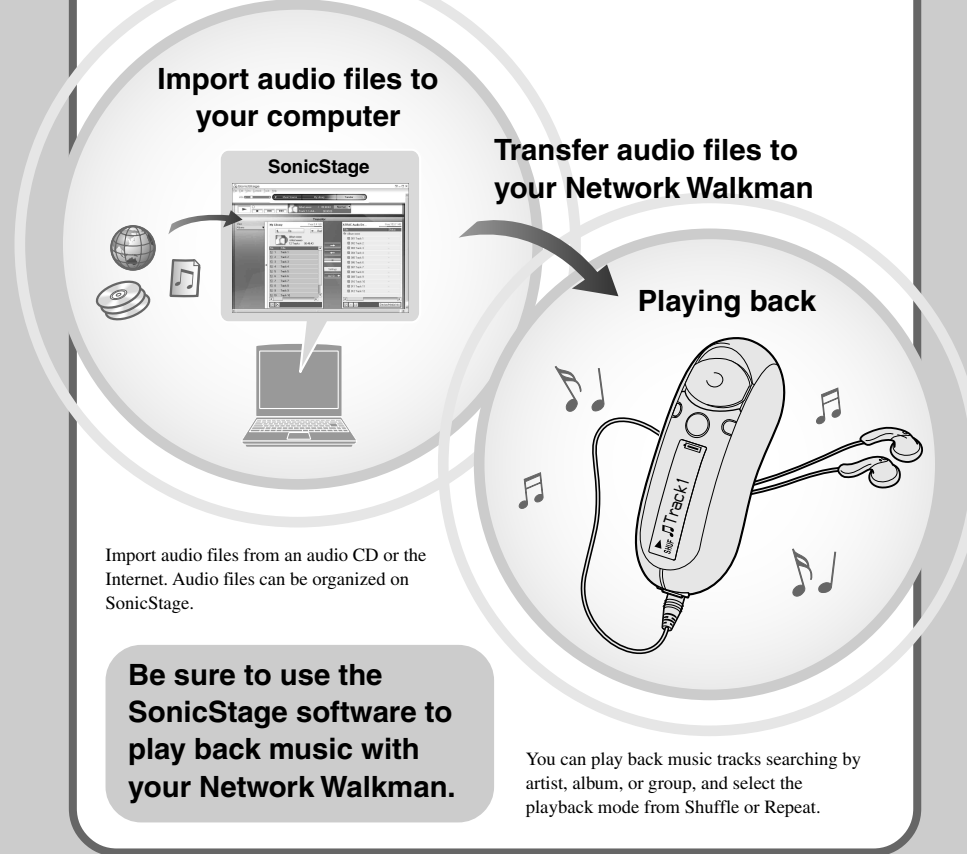
Файл "Инструкция по эксплуатации" в формате PDF на русском языке содержится на прилагаемом диске CD-ROM.

© 2005 Sony Corporation Printed in Malaysia



Enjoying music with the Network Walkman

You can easily transfer digital audio files from your computer to your Network Walkman using the SonicStage software to enjoy music anywhere you go.



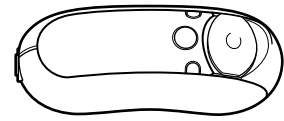
Be sure to use the SonicStage software to play back music with your Network Walkman.

You can play back music tracks searching by artist, album, or group, and select the playback mode from Shuffle or Repeat.

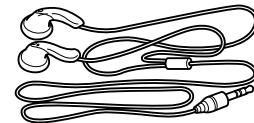
Preparing

1 Checking the package contents

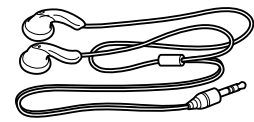
- Network Walkman (1)
- Extension headphone cord (Asian model only) (1)
- Neck strap (China model only) (1)
- CD-ROM for SonicStage software, and the Operating Instruction PDF files for Network Walkman and SonicStage (1)
- Quick Start Guide (1)



- Headphones (1) (European/USA model only)



(Asian model only)



- USB connection support cable (1)

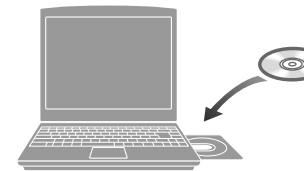


2 Installing the SonicStage software

Be sure to install the "SonicStage" software from the supplied CD-ROM in your computer. (The driver for the Network Walkman, the PDF file Operating Instructions and the PDF file SonicStage Operating Instructions will be installed.)

1 Insert the supplied CD-ROM into your computer.

The install wizard will be displayed.

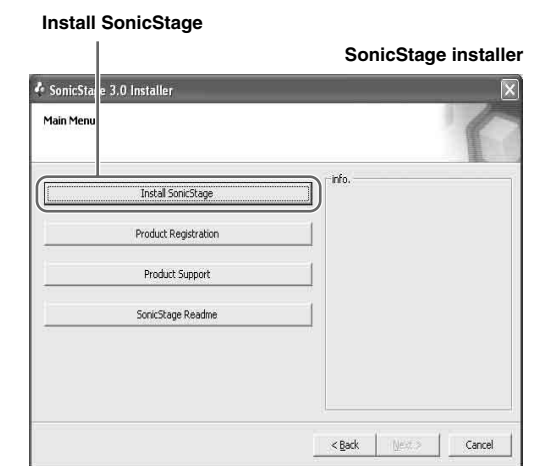


Notes

- Quit all activated applications on your computer.
- Log on as administrator (in case of Windows 2000 / Windows XP).
- Quit the virus check software (the software is hard-pressed on your computer).

2 Click [Install SonicStage] and follow the instructions on the screen.

(When the Region Selection screen is displayed, select your area and click [Next].)



Installation may take 20 to 30 minutes depending on your computer. Restart the computer after installing is complete.

If you cannot install the software, check the Q&A shown below.

Even if the SonicStage or OpenMG Jukebox software is already installed, be sure to install the supplied SonicStage software in order to install the driver for the Network Walkman.

WARNING

To reduce the risk of fire or electric shock, do not expose this apparatus to rain or moisture.

Do not install the appliance in a confined space, such as a bookcase or built-in cabinet.

To reduce the risk of fire, do not cover the ventilation of the apparatus with news papers, tablecloths, curtains, etc. And do not place lighted candles on the apparatus.

To reduce the risk of fire or electric shock, do not place objects filled with liquids, such as vases, on the apparatus.

Note on installation

If you use the unit at a place subject to static or electrical noise, the track's transferring information may be corrupted. This would prevent successful transferring authorization on your computer.

For the customers in the United States

Owner's Record

The model number and the serial number are located on the rear of the player. Record the serial number in the space provided below. Refer to them whenever you call your Sony dealer regarding this product.
 Model No. _____
 Serial No. _____

INFORMATION:

This equipment has been tested and found to comply with the limits for a Class B digital device, pursuant to Part 15 of the FCC Rules. These limits are designed to provide reasonable protection against harmful interference in a residential installation. This equipment generates, uses, and can radiate radio frequency energy and, if not installed and used in accordance with the instructions, may cause harmful interference to radio communications.

However, there is no guarantee that interference will not occur in a particular installation. If this equipment does cause harmful interference to radio or television reception, which can be determined by turning the equipment off and on, the user is encouraged to try to correct the interference using one or more of the following measures:

- Reorient or relocate the receiving antenna.
- Increase the separation between the equipment and receiver.
- Connect the equipment into an outlet on a circuit different from that to which the receiver is connected.
- Consult the dealer or an experienced radio/TV technician for help.

You are cautioned that any changes or modifications not expressly approved in this manual could void your authority to operate this equipment.

If you have any questions about this product:
 Visit: www.sony.com/walkmansupport
 Contact: Sony Customer Information Services Center at 1-(866)-456-7669
 Write: Sony Customer Information Services Center 12451 Gateway Blvd., Fort Myers, FL33913

Model NW-E305 and NW-E307 only

Declaration of Conformity	
Trade Name:	SONY
Model Number:	NW-E305 NW-E307
Responsible Party:	Sony Electronics Inc.
Address:	16450 W. Bernardo Dr. San Diego, CA 92127 USA
Telephone Number:	858-942-2230
This device complies with Part 15 of the FCC Rules. Operation is subject to the following two conditions: (1) This device may not cause harmful interference, and (2) this device must accept any interference received, including interference that may cause undesired operation.	

For the customers in the Netherlands

Voor de Klanten in Nederland



Gooi de batterij niet weg maar lever deze in als klein chemisch afval (KCA).

Notice for users

On the supplied software

- Copyright laws prohibit reproducing the software or the manual accompanying it in whole or in part, or renting the software without the permission of the copyright holder.
- In no event will SONY be liable for any financial damage, or loss of profits, including claims made by third parties, arising out of the use of the software supplied with this player.
- In the event a problem occurs with this software as a result of defective manufacturing, SONY will replace it. However, SONY bears no other responsibility.
- The software provided with this player cannot be used with equipment other than that which is so designated.
- Please note that, due to continued efforts to improve quality, the software specifications may be changed without notice.
- Operation of this player with software other than that provided is not covered by the warranty.

Program ©2001, 2002, 2003, 2004, 2005 Sony Corporation
 Documentation ©2005 Sony Corporation

"WALKMAN" is a registered trademark of Sony Corporation to represent Headphone Stereo products. **WALKMAN** is a trademark of Sony Corporation.

OpenMG and its logo are trademarks of Sony Corporation.

SonicStage and SonicStage logo are trademarks or registered trademarks of Sony Corporation. ATRAC, ATRAC3, ATRAC3plus and their logos are trademarks of Sony Corporation.

Microsoft, Windows and Windows Media are trademarks or registered trademarks of Microsoft Corporation in the United States and/or other countries.

MPEG Layer-3 audio coding technology and patents licensed from Fraunhofer IIS and Thomson. US and foreign patents licensed from Dolby Laboratories.

Adobe Reader is a trademark of Adobe Systems Incorporated.

All other trademarks and registered trademarks are trademarks or registered trademarks of their respective holders.

In this manual, TM and © marks are not specified. CD and music-related data from Gracenote, Inc., copyright © 2000-2004 Gracenote. Gracenote CDDB® Client Software, copyright 2000-2004 Gracenote. This product and service may practice one or more of the following U.S. Patents: #5,987,525; #6,061,680; #6,154,773; #6,161,132; #6,230,192; #6,230,207; #6,240,459; #6,330,593, and other patents issued or pending. Services supplied and/or device manufactured under license for following Open Globe, Inc. United States Patent 6,304,523. Gracenote is a registered trademarks of Gracenote. The Gracenote logo and logotype, and the "Powered by Gracenote" logo are trademarks of Gracenote.

Some models explained in this manual may not be available in some areas.

On the Specifications

See the PDF file "Operating Instructions" for the Specifications.

For online customer support information

For customers in the USA and Canada, visit:
<http://www.sony.com/walkmansupport>

For customers in Europe, visit:
<http://www.support-nwalkman.com>

For customers in the other country, visit:
<http://www.css.ap.sony.com>

<http://www.sony.net/>

If installing is not successful — Q&A

Q1 Is there sufficient hard disk drive space on your computer?

A1 200 MB or more space is needed to install the SonicStage software (1.5 GB or more is recommended). (The amount of space will vary depending on the Windows version and the number of audio files stored on the built-in flash memory.) If the hard disk drive space is insufficient, delete unnecessary data on your computer to increase space.

Q2 Is the operating system on your computer compatible?

A2 The following operating systems are compatible with the SonicStage software. Operating systems other than the following are not supported.
 Factory installed: Windows XP Media Center Edition 2005 / Windows XP Media Center Edition 2004 / Windows XP Media Center Edition / Windows XP Professional / Windows XP Home Edition / Windows 2000 Professional (Service Pack 3 or later)/ Windows Millennium Edition / Windows 98 Second Edition

Note

- This software is not supported by the following environments:
- OSs other than those indicated above
 - Personally constructed PCs or operating systems
 - An environment that is an upgrade of the original manufacturer-installed operating system
 - Multi-boot environment
 - Multi-monitor environment
 - Macintosh

Q3 Did all Windows programs on your computer quit before installation the SonicStage software?

A3 Quit all activated applications (displayed on the task bar of your computer).

Q4 Does the installation appear to have stopped before it has finished?

A4 Check for the appearance of an error message beneath the installation window. Press the "Tab" key while holding down the "Alt" key. If there is an error message, follow the instructions on the screen. If there is no message, the installation is still in progress. Wait for a little while longer.

Q5 Is the progress bar on the install wizard moving?

A5 When the progress bar on the install wizard of your computer is moving, the installation is progressing normally. Please wait. The installation may take 30 minutes or more, depending on your computer, CD drive or system environment.

Q6 Is the access lamp of your computer lit?

A6 When the access lamp of your computer is lit, the installation is progressing normally. Please wait. The installation may take 30 minutes or more, depending on your computer, CD drive or system environment.

Q7 Does the installation wizard not start up when the supplied CD-ROM is inserted?

A7 The installation wizard may not start up, depending on your computer setting. In this case, double-click [My computer] - [CD-ROM] on your computer.

Make sure of the following to install the SonicStage software successfully.

- Quit all applications, including resident programs.
- Log on as administrator.

■ If the SonicStage software does not start up

Install the software again.
 (Copy the contents of the supplied CD-ROM into your computer, then installing should finish successfully.)



Should any problem persist after you have checked these symptoms, consult your nearest Sony dealer.

Notes

- We do not guarantee trouble-free operation on all computers that satisfy the system requirement.
- The NTFS format of Windows XP/Windows 2000 Professional can be used only with the standard (factory) settings.
- We do not guarantee trouble-free operation of the system suspend, sleep, or hibernation function on all computers.

Continue to reverse side

Transferring

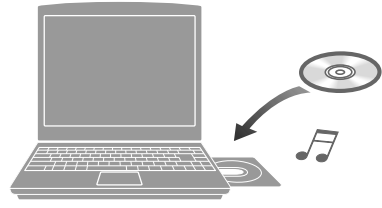
3 Importing audio files to your computer

To import audio files from an audio CD

Record and store audio files from an audio CD to the SonicStage [My Library].

1 Double-click on the desktop.

SonicStage software starts up.



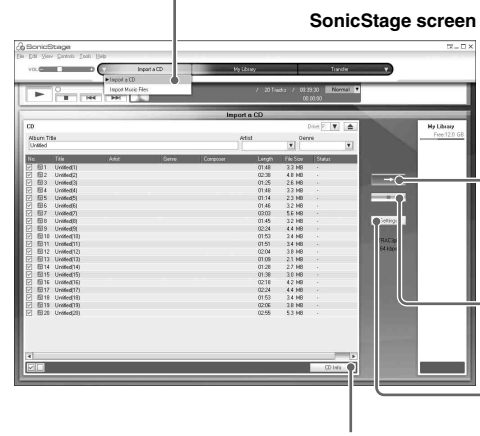
2 Insert the audio CD that you want to record into the CD drive of your computer.

3 Place the pointer over [Music Source] and click [Import a CD].

4 Click to record the songs.

To stop recording, click .

To change the format and bit rate, click [Settings] before 4.

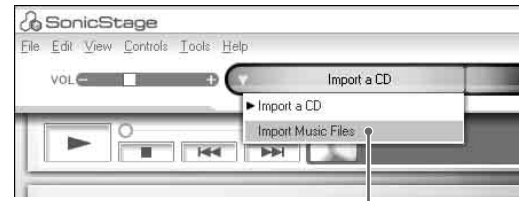


To obtain CD information automatically, connect your computer to the Internet. If CD information does not appear automatically, click [CD Info] before 4 while connected to the Internet.

To import audio files from your computer

1 Double-click on the desktop.

SonicStage software starts up.



2 Place the pointer over [Music Source] and click [Import Music Files].

3 Click an audio file you want to import.

You can select several audio files simultaneously using the CTRL key.

4 Click [Import].

Tip

You can import audio files using the [Import] of [File] menu in the following 3 ways.

- Scan Folder
- Music File
- M3U File

What is CD information?

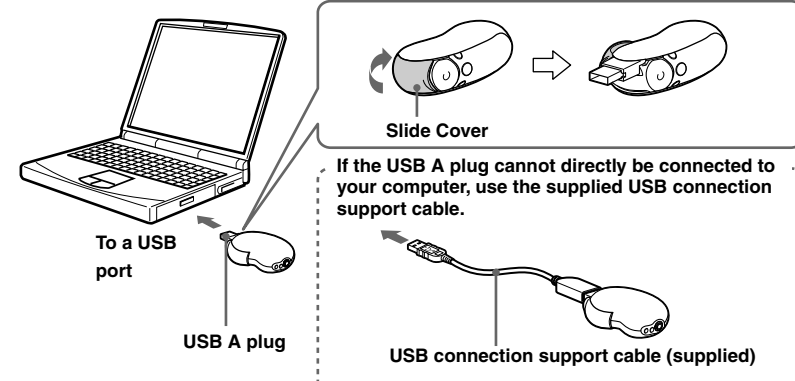
CD information is a track name, an artist name and an album name included in an audio file. When you insert an audio CD into CD drive of your computer, SonicStage will automatically obtain the CD information from CDDB (Gracenote CD DataBase) via Internet. You cannot obtain the CD information from CDDB if the CD is not registered at CDDB.

4 Transferring files to your Network Walkman/Charging

Transfer tracks (audio data) stored in SonicStage [My Library] to the Network Walkman.

1 Connect your Network Walkman to your computer and charge it.

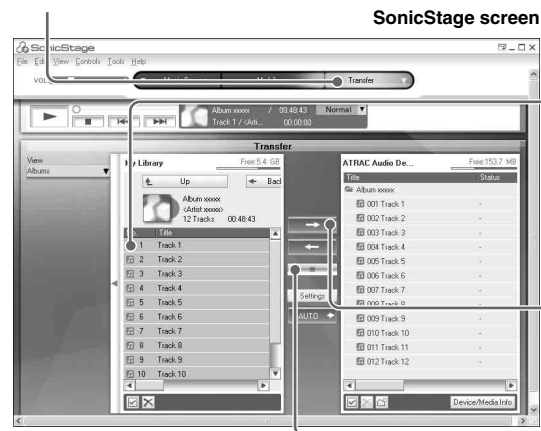
"USB Connect" appears in the display.



The Network Walkman is rechargeable when connected to a computer with USB

When the remaining battery indication of the display shows: , charging is complete. Fully charge the Network Walkman (to in the remaining battery indication of the display) before using it for the first time.

2 Place the pointer over [Transfer] and select [ATRAC Audio Device] from the transfer destination list.



3 Select an audio file(s) or album you want to transfer.

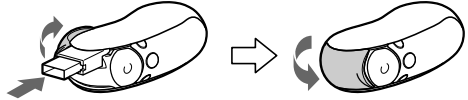
4 Click to start transferring.

To stop recording, click .

After disconnecting the Network Walkman from your computer

Close the Slide Cover after disconnecting the Network Walkman from your computer.

1 Push the Slide Cover further to release the USB A plug as shown by the arrow.



2 Push in the USB A plug until it clicks.

3 Close the Slide Cover.

Notes

- The recorded music is limited to private use only. Use of the music beyond this limit requires permission of the copyright holders.
- Sony is not responsible for incomplete recording/downloading or damaged data due to problems of the Network Walkman or computer.
- Do not disconnect the Network Walkman from your computer while the data is being transferred. If you do, the data being transferred may be destroyed.
- When you record an audio CD for the first time, [CD Drive Check] will be performed. Record the audio CD when it is completed.
- The number of transfers for an audio file may be limited for reasons of copyright.
- If the Network Walkman is disconnected from your computer while data is being transferred, unnecessary data may result in the Network Walkman. In this case, transfer usable audio files (including non-audio data) back to your computer and format the built-in flash memory using the "Format" menu of the Network Walkman.

Remaining battery indication

The battery icon in the display changes as shown below.



The battery power gets low as shown in the battery icon. If "LOW BATTERY" appears, you cannot play back with the Network Walkman. In this case, charge the battery by connecting to your computer.

Playing back

5 Playing back

- 1 Slide the Slide Cover in the direction of the arrow to release the HOLD.
- 2 Connect headphones to headphone jack.
- 3 Press the center of the 5 Direction JOG (▶■).
- 4 Press > (VOL) to turn up the volume/press < (VOL) to turn down the volume.

To search tracks

Use the 5 Direction JOG on the Network Walkman.

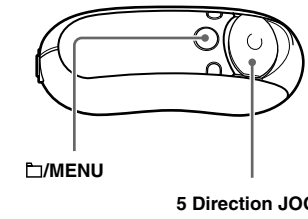
To	5 Direction JOG operation
Skip to the beginning of the next track	Press V of the 5 Direction JOG.
Skip to the beginning of the current track	Press A of the 5 Direction JOG.
Go forward/backwards quickly	Press and hold V/A of the 5 Direction JOG during playback and release at the desired point.

Playing back a song by searching

You can search for desired tracks to playback by artist name (♫Artist), album name (@Album), or group transferred from your computer using the SonicStage software (□Group).

Example of searching

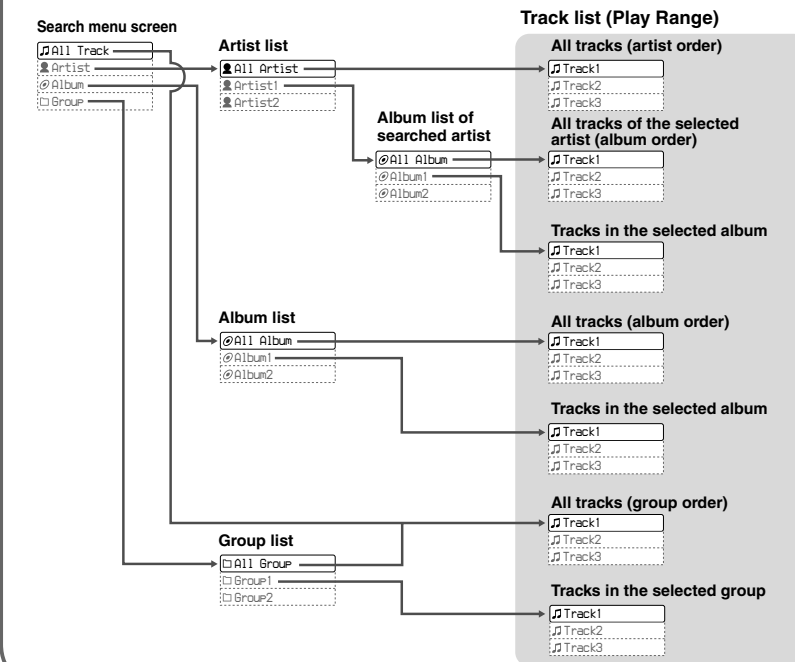
Refer to the illustration below.



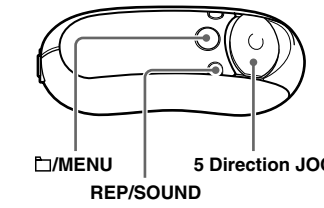
- 1 Press and hold □/MENU to appear the menu screen.
- 2 Press V ^ of the 5 Direction JOG to select "Search" and press > (VOL) to confirm.
- 3 Press V ^ of the 5 Direction JOG to select "♫Artist" and press > (VOL) to confirm.
- 4 Press V ^ of the 5 Direction JOG to select "♫Artist1" from the artist list and press > (VOL) to confirm.
- 5 Press V ^ of the 5 Direction JOG to select "@Album1" from the album list of Artist1 and press > (VOL) to confirm. The track list of Album1 appear. The list appeared will become the Play Range.
- 6 Press V ^ of the 5 Direction JOG to select "♫Track1" from the track list and press > (VOL) to confirm. Playback starts from Track1. Playback will stop automatically at the end of Track3 (in this case, the end of the Play Range).

On the search flow and Play Range

Press and hold □/MENU to appear the search menu screen. Proceed to the next stage by pressing > (VOL) of the 5 Direction JOG, and return to the previous stage by pressing < (VOL) of the 5 Direction JOG on the search menu screen. The searched tracks (■) as shown in the illustration below) become a Play Range (coverage of playback).

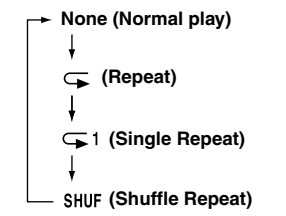


Changing playback mode



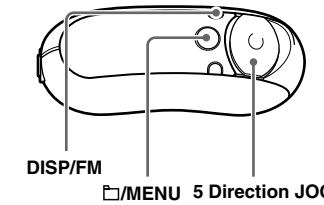
- 1 Press and hold □/MENU in stop mode. The menu screen appears.
- 2 Press V ^ of the 5 Direction JOG to select "Repeat:" and press > (VOL) to confirm.
- 3 Press V ^ of the 5 Direction JOG to select "Track" and press > (VOL) to confirm.

- 4 Press and hold □/MENU until the screen changes.
- 5 Press REP/SOUND repeatedly to select the repeat mode you want.



Listening to FM Radio

—NW-E303/E305/E307 only



- 1 Press and hold DISP/FM until the screen changes. The FM tuner screen appears and FM signals receive.
- 2 Select broadcast stations.

Manual Tuning

- 1 Press □/MENU. The frequency appears in []. When a selected frequency is already preset, the number also appears.
- 2 Select the next (or previous) frequency by pressing V ^ of the 5 Direction JOG.

Preset Tuning

- 1 Press □/MENU. The preset number appears in [].
- 2 Select the next (or previous) preset number by pressing V ^ of the 5 Direction JOG.

Tip

In Preset Tuning, you cannot select broadcast stations if no preset stations are entered. Preset receivable broadcast stations in your area automatically by selecting "FM Auto Preset" in the menu screen. This is convenient when you use the FM tuner for the first time or when you change to a new area.

- 1 Press and hold □/MENU until the menu screen appears.
- 2 Press V ^ of the 5 Direction JOG to select "FM Auto Preset:" and press > (VOL) to confirm.
- 3 Press V ^ of the 5 Direction JOG to select "OK?" and press the center of the 5 Direction JOG (▶■) to confirm.

For details on Preset Tuning, refer to the PDF file "Operating Instructions".

Additional Information Q&A

Q1 Do MP3 audio files allow for use in the Network Walkman?

A1 You can import MP3 audio files to the SonicStage software and transfer MP3 audio files to the Network Walkman using SonicStage.

MP3 format files to be used:

- MPEG-1 Audio Layer-3
- Sampling frequency: 44.1 kHz
- Bit rate: 32 to 320 kbps, variable bit rate-compliant

Q2 Can the Network Walkman record audio files or FM Radio?

A2 The Network Walkman cannot record audio files or FM Radio. Import the desired audio files to the SonicStage software and transfer them to the Network Walkman using SonicStage.

Q3 Can Windows Explorer format the built-in flash memory of the Network Walkman correctly?

A3 No, if the built-in flash memory of the Network Walkman is formatted using Windows Explorer, the transferred tracks will not be found. Be sure to format the built-in flash memory using the "Format" menu of the Network Walkman.