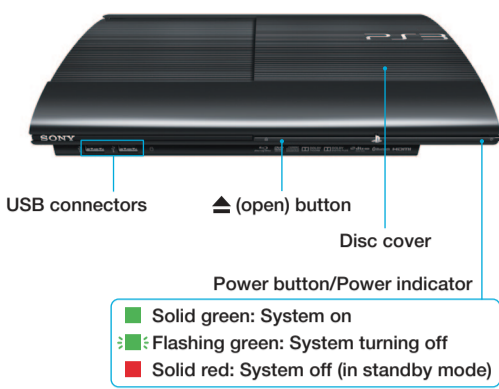
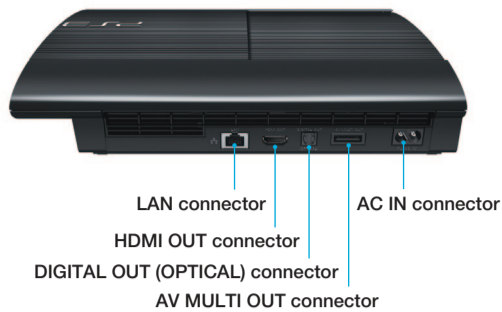


# Getting Started

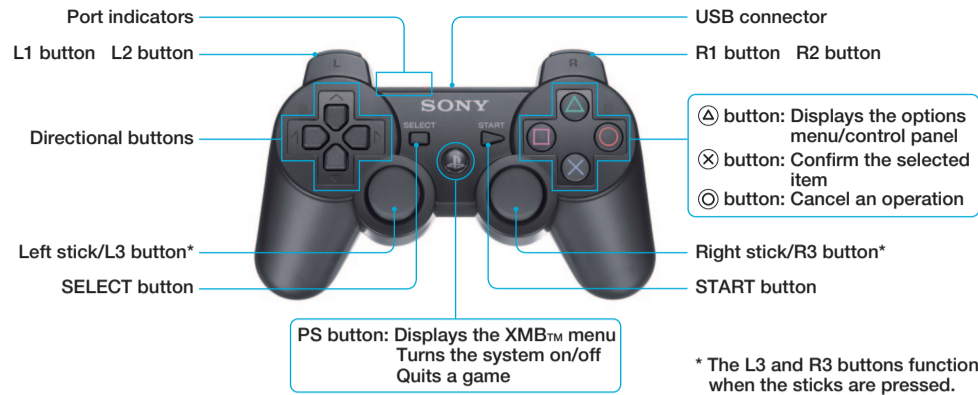
## System front



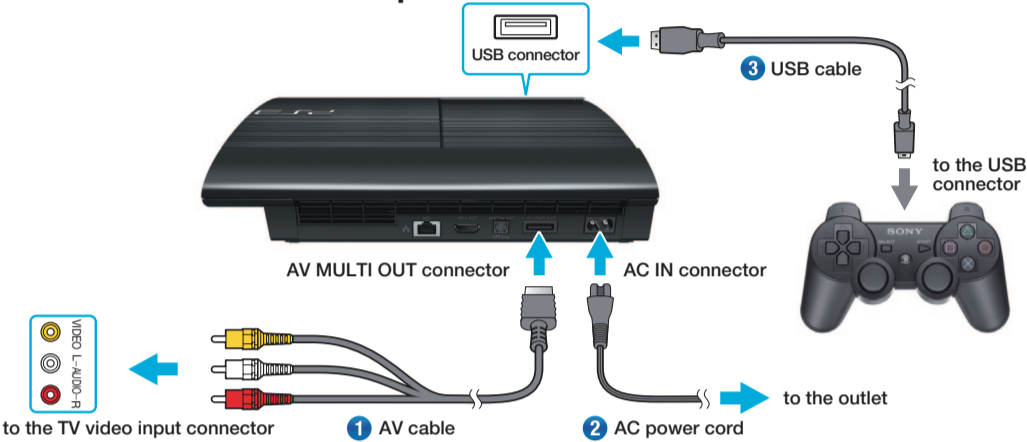
## System rear



## DUALSHOCK®3 wireless controller

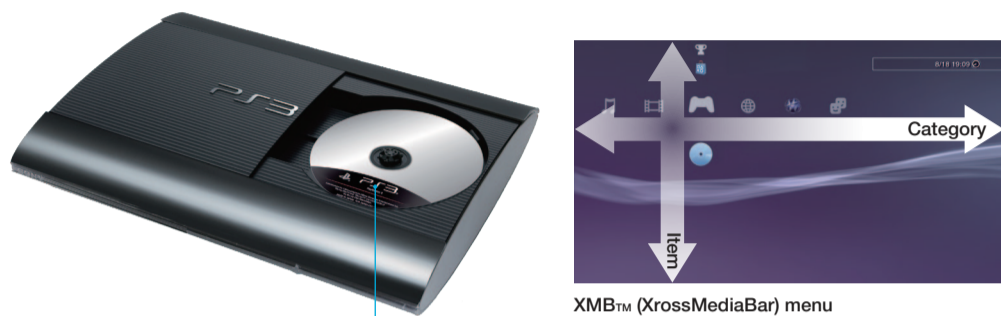


## Connection and Setup



- Connect your PS3™ system to a TV.  
For high definition output, connect the TV and the PS3™ system using an HDMI® cable (sold separately).
- Turn on the TV and then select the appropriate input.
- Press the power button to turn on the PS3™ system.  
If video is not displayed, turn off the PS3™ system, and then turn it on again by pressing the power button for at least five seconds (until the system beeps a second time).
- Press the PS button on the wireless controller.
- Follow the on-screen instructions to perform the initial setup.

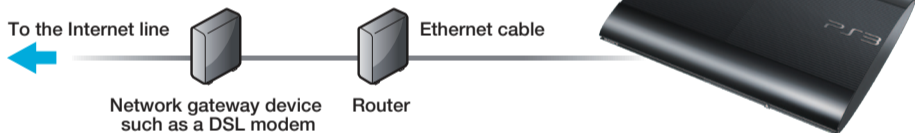
## Playing disc content



- Open the disc cover and insert the disc.  
To open the disc cover, you can either press the **(open)** button or manually slide the disc cover to the left. Push the disc into place until you hear a click.
  - Slide the disc cover closed.  
When you close the disc cover, the disc will automatically start playing. If the disc does not automatically start, select the icon for the disc from the XMB™ menu, and then press the **(confirm)** button.
- To quit a game, press the PS button on the controller and then select **(Quit Game)**. To quit playing other types of discs, press the **(cancel)** button on the controller.
  - Saved data for PlayStation®3 format software is saved in the system storage. To display the data, go to **(Game)** **(Saved Data Utility(PS3™))**.

## Connect to the network

### Connect using a wired connection

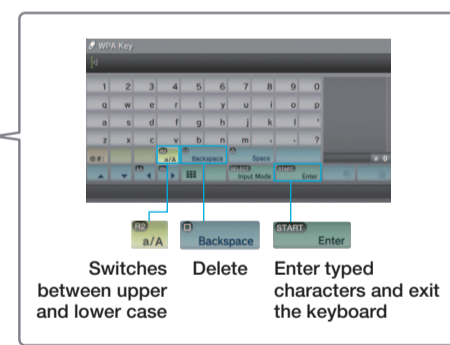


- Connect an Ethernet cable (sold separately) to the PS3™ system.
- Select **(Settings)** **(Network Settings)** **[Internet Connection Settings]**.
- Select **[Easy]**.
- Check that the settings are correct, and then save the settings.

### Connect wirelessly



- Select **(Settings)** **(Network Settings)** **[Internet Connection Settings]**.
- Select **[Easy]** **[Wireless]** **[Scan]**.
- Select the access point you want to use.
- Check that the SSID is correct and press the right button.
- Select the type of encryption key.
- Enter the encryption key.  
Press the **(confirm)** button to display the keyboard. Enter the encryption key and then select **[Enter]**.
- Check that the settings are correct, and then save the settings.



## Using PSN™

PSN™ gives you instant access to a variety of services, including online gaming, downloadable games, movies and content from **(PlayStation®Store)** and chat facilities under **(Friends)**. To use PSN™, you must have a Sony Entertainment Network account. To create an account, select **(Sign Up)** under **(PSN)** and follow the on-screen instructions.

PSN™ and PlayStation®Store not available in all countries and languages, see [eu.playstation.com/legal](http://eu.playstation.com/legal) for details. Broadband internet connection required. Users are responsible for broadband internet connection fees. Users must be 7 years or older and users under 18 require parental consent. Charges apply for some content and/or services. Registration also possible via web browser at [eu.playstation.com](http://eu.playstation.com).



## Supporting documentation

### Safety and Support

This document contains information about how to safely use the PS3™ system. Be sure to read it before using the PS3™ system. This document includes parental control information.

### Online User's Guide [eu.playstation.com/ps3/support/manuals/](http://eu.playstation.com/ps3/support/manuals/)

This guide contains detailed information about using the PS3™ system. You can also refer to **(Network)** **(?)** (Online Instruction Manuals).

### System Software Updates [eu.playstation.com/ps3](http://eu.playstation.com/ps3)

This site provides the latest information about system software updates.

### Support [eu.playstation.com/ps3/support/](http://eu.playstation.com/ps3/support/)

The official site for PlayStation® product support provides the latest questions and answers about your product.

SONY

Welcome to the world of PlayStation

Design and specifications are subject to change without notice. The information contained in this manual is subject to change without notice.  
 \*PS, PlayStation, PS3, DUALSHOCK, and the PS Family logo are registered trademarks of Sony Computer Entertainment Inc.  
 \*PSN is a trademark of the same company.  
 \*XMB and "cross media bar" are trademarks of Sony Corporation and Sony Computer Entertainment Inc.  
 \*SONY and the SONY logo are registered trademarks of Sony Corporation. "Sony Entertainment Network" is a trademark of the same company.  
 The terms HDMI and HDMI High-Definition Multimedia Interface, and the HDMI Logo are trademarks or registered trademarks of HDMI Licensing LLC in the United States and other countries.  
 © 2014 Sony Computer Entertainment Inc. All rights reserved.



Quick Start Guide

CECH-4302 / CECH-4303 series 4-537-983-31(1)



Printed in China