

step 1 Hookup

Quick Start Guide RDR-GX257

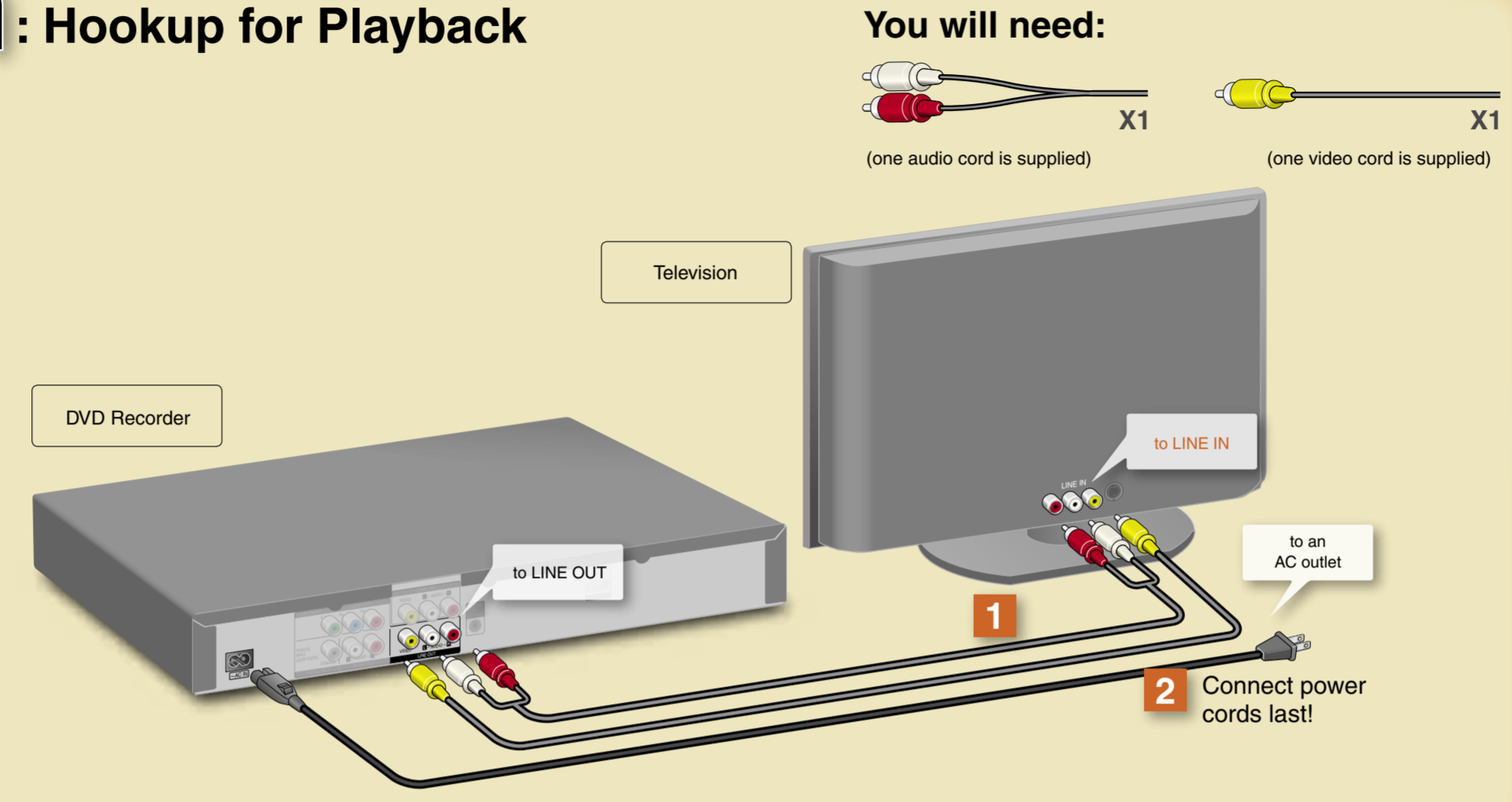
- Follow the three steps below to connect, setup and make recordings on your DVD recorder.
- step 1 Hookup**
- step 2 Setup**
- step 3 Record!**

©2008 Sony Corporation
Printed in Indonesia
4-111-178-11(1)

Select a connection

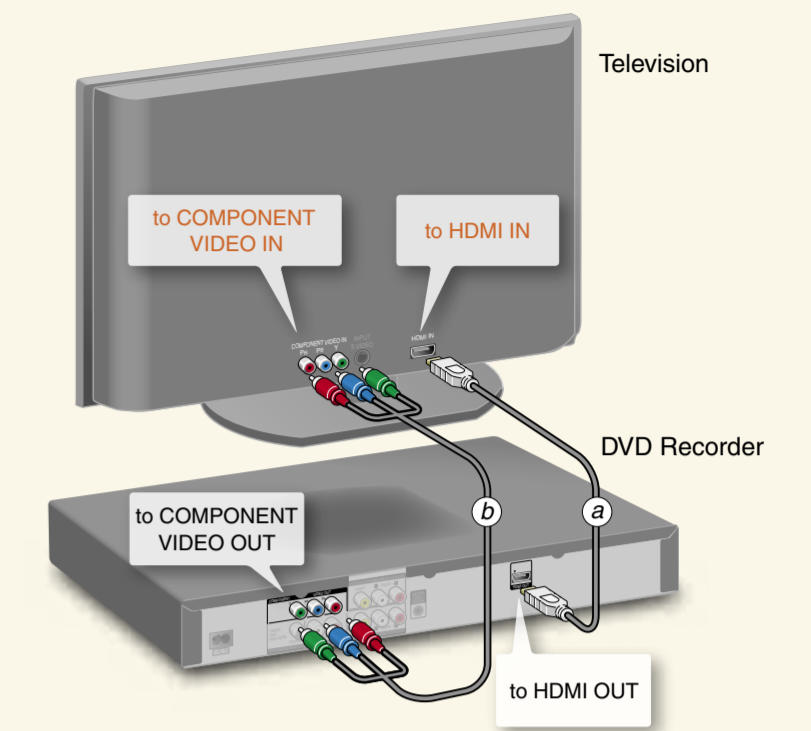
To enjoy DVD playback, select connection A. In addition, if you want to record TV programs from a connected tuner, make additional connections by referring to connection B.

A: Hookup for Playback



Optional

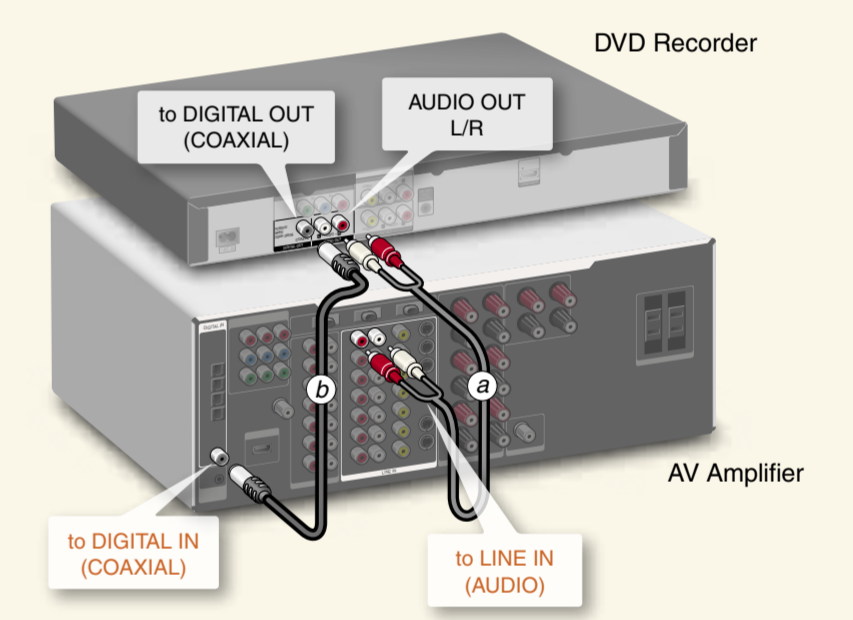
Connecting a component video cord or an HDMI cord



Connect one of the following cords (not supplied) instead of the video cord. (One audio/video cord is supplied.) You will enjoy high quality images.

(a) HDMI cord or (b) Component video cords
For further explanations, refer to the Operating Instructions.

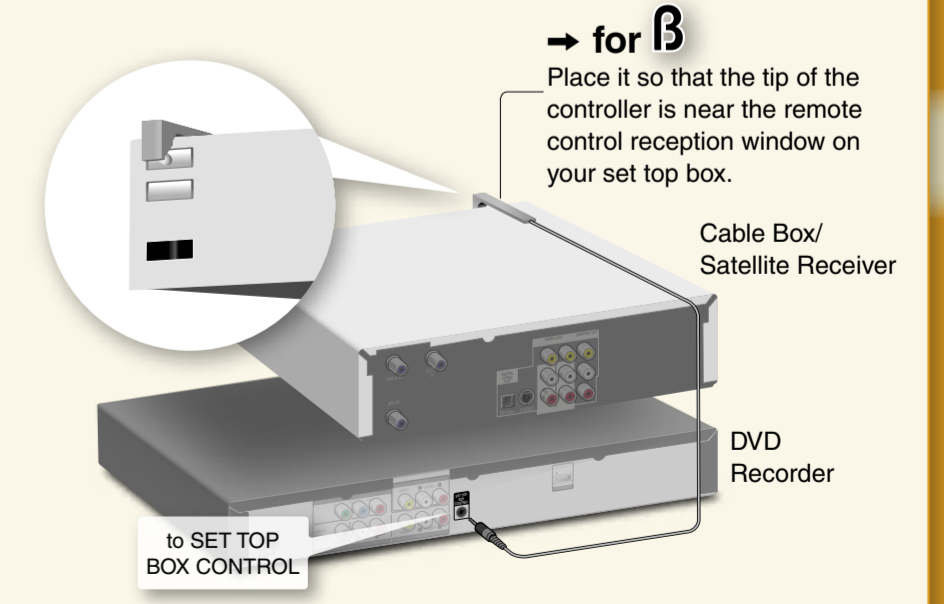
Connecting an AV amplifier (receiver)



Connect one of the following cords (not supplied).

(a) audio cords or (b) coaxial digital cord
Connecting to an AV amplifier (receiver) with digital cords will enable you to listen to Dolby Digital or DTS surround effects. For further explanations, refer to the Operating Instructions.

Connecting the Set Top Box controller



You can have the recorder control channels on the cable box or satellite receiver for timer recording. Connect the Set Top Box controller (supplied), and select "On" in step 5 of "Set top box settings" on the next page.

B: Hookup for Playback and Recording

Before hookup

This DVD recorder does not include a tuner. To record TV programs on the DVD recorder from a connected device, you need to connect the DVD recorder to a tuner that has audio/video output jacks.

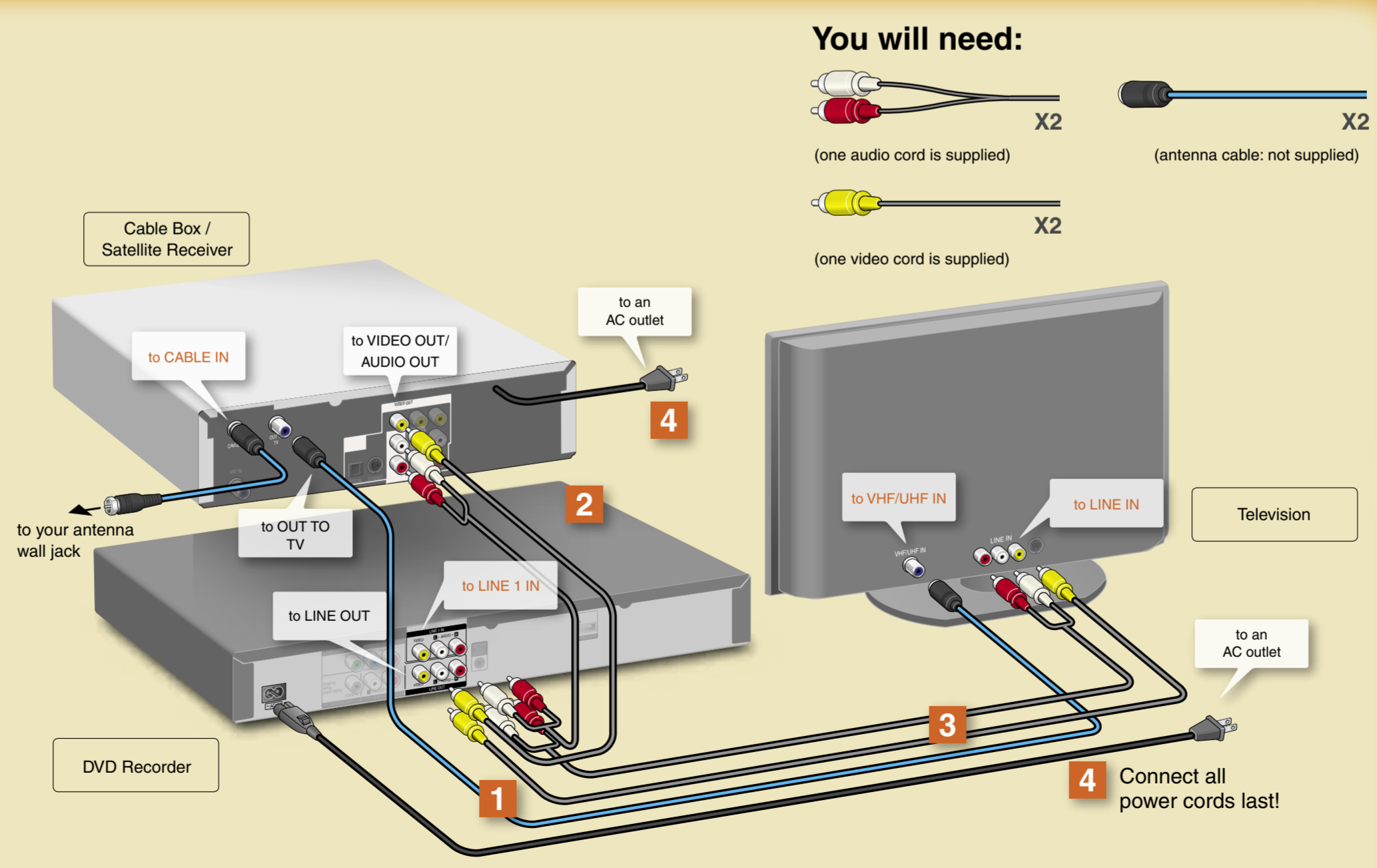
- You have :**
- Cable Box With Video/Audio Output
 - or -
 - Satellite Receiver With Video/Audio Output
- ▶ See right

hint
If you have been using your VCR connected to an antenna, connect this DVD recorder to the VCR using an audio/video cord. This way, you can record TV programs.

- If you have neither of the above tuners :**
- You have :**

- Cable Box/Satellite Receiver Without Video/Audio Output**
→ Please contact your cable service or satellite service company to ask cable box or satellite receiver with video/audio output.
- Cable With No Cable Box**
→ Please contact your cable service to ask cable box with video/audio output.
- Antenna Only (No Cable TV/No Satellite Receiver)**
→ You need to subscribe to a cable TV or satellite TV service and to get a cable box or satellite receiver with video/audio output.

hint
For any inquiry, please visit the Sony web site : <http://esupport.sony.com/>



step2 Setup

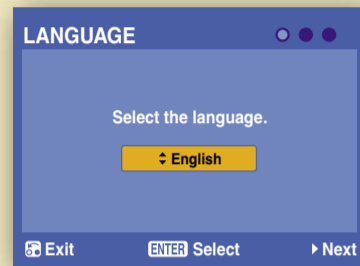
Be sure to make the following settings beforehand as they are necessary for general TV viewing and timer setting.

hint

You can use "Setup" options (audio, video, etc.) to better adjust your viewing environment. Refer to "Settings and Adjustments" in the Operating Instructions.

Setting language and clock

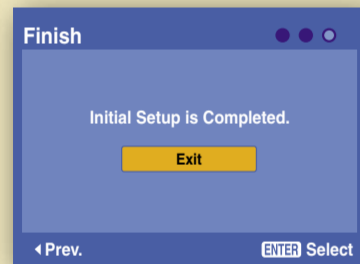
- 1 Turn on the recorder and the connected cable box/satellite receiver.
- 2 Turn on your TV and switch the input selector on your TV so that the signal from the recorder appears on your TV screen.
- 3 Select a language for the on-screen displays, and press ENTER.



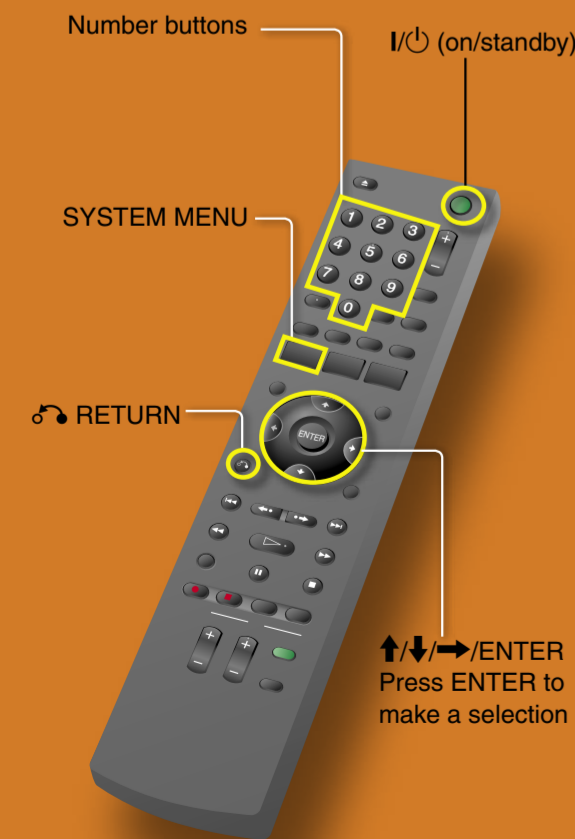
- 4 Set the month, date, year, and time using ←/↑/↓/→ or the number buttons and press ENTER to start the clock.



- 5 Press ENTER to close the display.

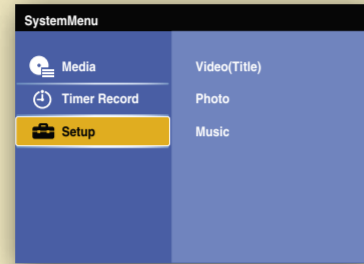


When using the supplied set top box controller, make necessary settings and check that the controller works correctly (▶ See right).



Set top box settings

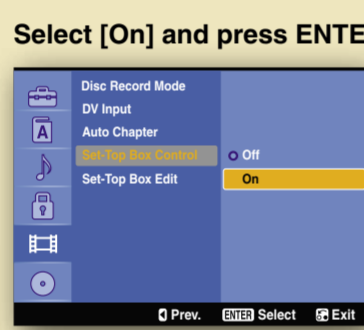
- 1 Press SYSTEM MENU.
- 2 Select [Setup] and press ENTER.



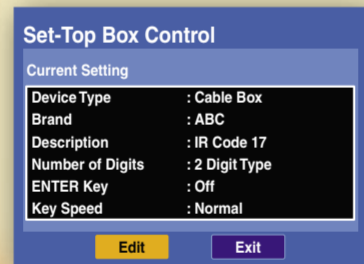
- 3 Select [Video] and press →.



- 4 Select [Set-Top Box Control] and press →.

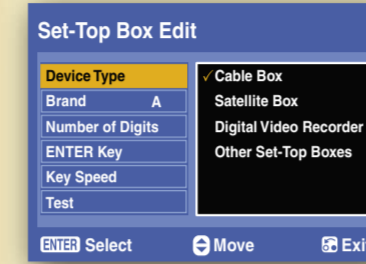


- 6 On the [Current Setting] display, select [Edit] and press ENTER.

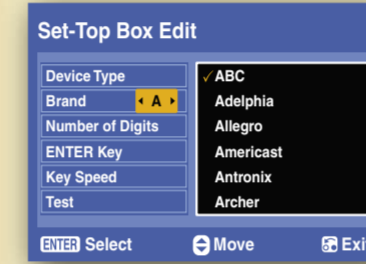


- 7 Select from the following options and press ENTER.

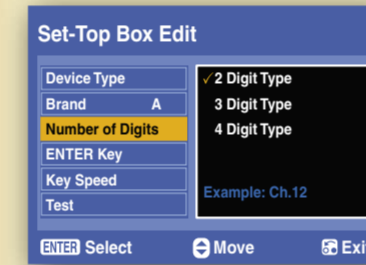
[Device Type]: Selects the type of cable box/satellite receiver.



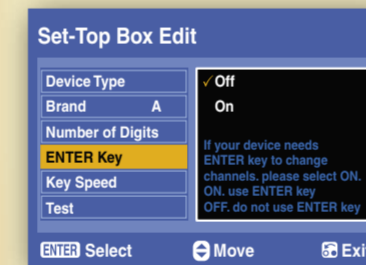
[Brand]: Press ←/→ to select the initial of the brand name, press ENTER, and then press ↑/↓ to select the brand.



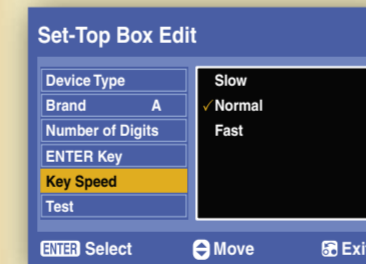
[Number of Digits]: Selects the number of digits for your cable box/satellite receiver's channel.



[ENTER key]: Selects whether you need to press the ENTER button each time after entering the channel number.



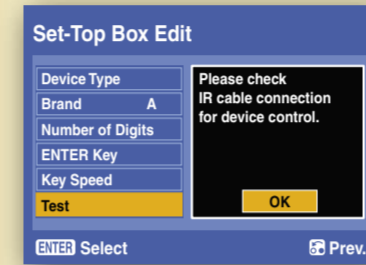
[Key Speed]: Selects the speed to send commands to the cable box/satellite receiver.



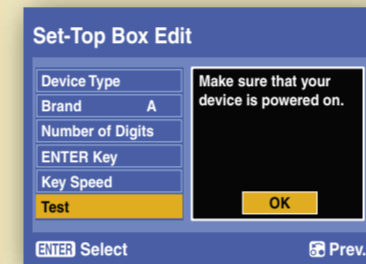
After making changes, check if the cable box/satellite receiver control works correctly (▶ See right).

Test the set top box controller

- 1 Select [Test] and press ENTER.
- 2 Check the overall connection and press ENTER.



- 3 Turn on the cable box/satellite receiver (if turned off), and press ENTER.



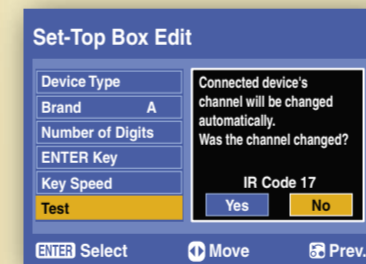
- 4 Select a code for the recorder's remote and press ENTER.



- 5 Press ←/↑/↓/→ to enter a channel (any channel), select [OK], and press ENTER.



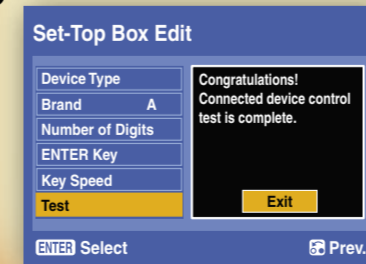
- 6 Check if the same channel is selected on the cable box/satellite receiver.



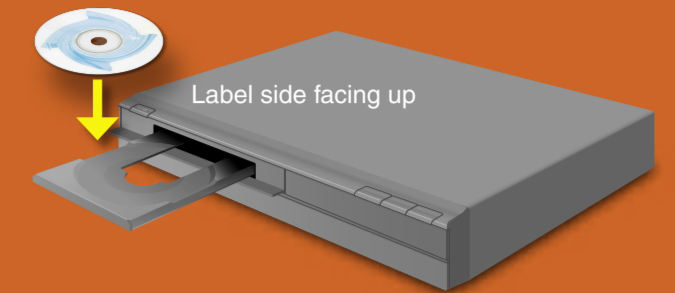
If the same channel is not selected, return to step 4 by pressing ↵ RETURN repeatedly and try one of the other code(s) until you find the one that works.

- 7 Select [Yes] and press ENTER.

- 8 Press ENTER to close the display.



step3 Record!



Insert a DVD Disc

- 1 Press ▲ OPEN/CLOSE and place a recordable DVD on the disc tray.
- 2 Press ▲ OPEN/CLOSE again to close the disc tray. Wait until "REAd" disappears from the front panel display. Refer to "Recordable and Playable Discs" in the Operating Instructions for details about recordable discs.

Record a TV Program

- 1 Press INPUT to select input source until "L1" appears in the front panel display.
- 2 Select a channel on the connected cable box or satellite receiver.
- 3 Press REC MODE repeatedly to select the recording mode. HQ, SP, LP, EP, or ULP HQ offers the best quality picture, but with the shortest recording time. Recording time increases with each successive mode, but the picture quality gradually deteriorates.
- 4 Press ● REC. The recorder starts recording. To stop recording, press ■ REC STOP.

Record a TV Program using Timer

- 1 Press TIMER. The Timer List menu appears.
- 2 Select [NEW] and press ENTER.
- 3 Press ←/↑/↓/→ to set input source, date, start/stop time, and channel.
- 4 Press ENTER.
- 5 Press ↵ RETURN to turn off the Timer List. Leave the cable box/satellite receiver turned on.

Playback the Recorded DVD Disc

- 1 Press TITLE LIST. The Title List menu appears.
- 2 Press ↑/↓ to select the title you want to play and press ENTER. The sub-menu appears.
- 3 Press ↑/↓ to select [Play] and press ENTER. Playback starts from the beginning of the title.

