



Startup guide

Xperia™ Tablet Xxx SGP712

XPERIA

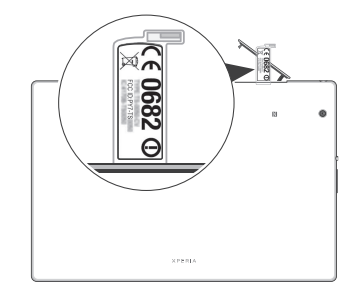
Sony Mobile Communications Inc.
1-8-15 Konan, Minato-ku, Tokyo 108-0075, Japan

Legal information

Sony SGP712

This Startup guide is published by Sony Mobile Communications Inc. or its local affiliated company, without any warranty. Improvements and changes to this Startup guide necessitated by typographical errors, inaccuracies of current information, or improvements to programs and/or equipment, may be made by Sony Mobile Communications Inc. at any time and without notice. Such changes will, however, be incorporated into new editions of this Startup guide. All illustrations are for illustration only and may not accurately depict the actual device. See regulatory information such as the CE mark in the relevant label tray in the device. All product and company names mentioned herein are the trademarks or registered trademarks of their respective owners. Any rights not expressly granted herein are reserved. Visit www.sonymobile.com/us/legal/ for more information. Product compliance: This product has been manufactured by or on behalf of Sony Mobile Communications Inc., 1-8-15 Konan, Minato-ku, Tokyo 108-0075, Japan. Inquiries related to product compliance based on national legislation shall be addressed to Sony Mobile Quality Office, Sony Mobile Communications Inc., 1-8-15 Konan, Minato-ku, Tokyo 108-0075, Japan. For any service or guarantee matters, please refer to the contact details provided in the separate service or guarantee documents. © 2015 Sony Mobile Communications Inc. All rights reserved.

To view the CE mark and the FCC ID

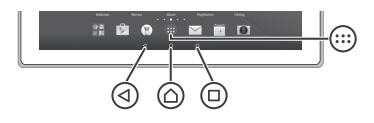


- 1 Detach the memory card slot cover.
- 2 Place your fingernail just under the tip on the label tray, then drag out the tray. The information is displayed on the tray.

To view the regulatory compliance mark

- 1 From your Home screen, tap
- 2 Find and tap Settings > About tablet > Legal information > Certificates.

Using the keys



- Back navigation key
 - Go back to the previous screen within an application or close the application.
- Home navigation key
 - Exit an application and go back to the Home screen.
- Task navigation key
 - Open the recently used applications window and the small apps bar.
- Application screen
 - Open the Application screen.

Basic applications and settings

- Go to Google Play™ to download free and paid applications for your device.
- Optimise the device settings to suit your own requirements.

Status and notifications

To open or close the Notification panel



- 1 To open the Notification panel, drag the status bar downwards.
- 2 To close the Notification panel, drag the panel upwards.

Support on the web



Visit www.sonymobile.com/support to access a range of support options for your device, including downloads, troubleshooting tips and a User guide.

Setting up your device

Setup guide

The first time you start your device, a setup guide opens to help you configure basic settings, sign in to some accounts (for example, your Google™ account), and personalise your device. You can also manually access the setup guide at a later stage.

To access the setup guide manually

- 1 From the Home screen, tap .
- 2 Tap > Setup guide.

Accessing settings

View and change settings for your device from the Settings menu. The Settings menu is accessible from both the Application screen and the Quick settings panel.

To access your device settings

- 1 From your Home screen, tap .
- 2 Find and tap .

Transferring your contacts

Xperia™ Transfer is an application that helps you to collect contacts from your old device and transfer them to your new device. Xperia™ Transfer, which you can access from within the PC Companion program, supports mobile devices that run on several operating systems, including iOS, Android™, Windows® and BlackBerry™. To use Xperia™ Transfer, you need:

- An Internet-connected computer.
- A USB cable for your old device.
- A USB cable for your new Android™ device.
- Your old device.
- Your new Android™ device.

To transfer contacts to your new device

- 1 Search and download PC Companion (on a PC) from www.sonymobile.com if the application is not already installed.
- 2 After successful installation, open the PC Companion application, then click *Xperia™ Transfer* and follow the relevant instructions to transfer your contacts.

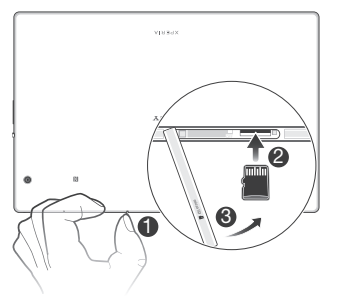
Finding your way



- | | |
|--------------------------------|---------------------------|
| 1. Headset jack | 9. GPS antenna |
| 2. Memory card slot cover | 10. Microphone |
| 3. Light sensor | 11. Wi-Fi sub antenna |
| 4. Front camera lens | 12. Wi-Fi main/BT antenna |
| 5. Charging/Notification light | 13. Main camera |
| 6. Charger/USB port | 14. NFC™ detection area |
| 7. Speaker | 15. Power key |
| 8. Speaker | 16. Volume/Zoom key |

Assembly

To insert a memory card



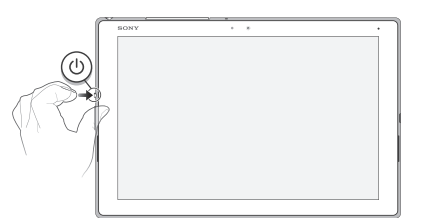
- 1 Detach the memory card slot cover.
- 2 Place the memory card in the memory card slot, then push the memory card all the way into the slot until you hear a clicking sound.
- 3 Re-attach the memory card slot cover.

Basics

Turning on the device

Make sure that the battery is charged for at least 30 minutes before you turn on the device for the first time.

To turn on the device



- 1 Press and hold down the power key until the device vibrates.
- 2 Wait a while for the device to start.

Waking up the screen

To activate the screen

- Briefly press the power key .

Important Information

Before you use your device, please read the *Important Information* provided in your device regarding warranty, safety and handling information.

Protecting your device from water and dust

Your device has IP (Ingress Protection) ratings of IP65 and IP68. These ratings mean that your device is dust tight and is protected against low pressure water stream as well as against the effects of submersion for 30 minutes in fresh (non-saline) water up to 1.5 metres deep. Always firmly attach all covers to ensure the water and dust resistance of the device. If liquid is detected inside the device, for example, underneath one of the covers, your warranty will be void. Before using your device in water and in dusty conditions, refer to the relevant section of the User guide for your device for more detailed information. An online User guide as well as a downloadable version is available at www.sonymobile.com/support.

⚠ After using your device in water, wait for the USB port to dry before you insert a cable into the port.

Overview

