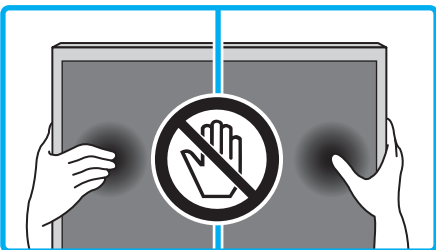


Setup Guide



4-690-456-11(1)



US	Setup Guide
FR	Manuel de configuration
ES	Guía de configuración
PT	Guia de Configuração

Sony Customer Support
U.S.A.:
<http://www.sony.com/tvsupport>
Canada:
<http://www.sony.ca/support>
United States
1.800.222.SONY
Please Do Not Return the Product to the Store

Service à la clientèle Sony
Canada :
<http://www.sony.ca/support>
États-Unis :
<http://www.sony.com/tvsupport>
Canada
1.877.899.SONY
Ne retournez pas le produit au magasin

Lea este manual antes de usar el producto
Centro de Asistencia de Sony
<http://esupport.sony.com/ES/LA/>
Llame al número telefónico que aparece en su póliza de garantía.
Por favor no devuelva el producto a la tienda donde adquirió el producto.

Suporte ao Cliente Sony
<http://esupport.sony.com/BR/>
Não devolva o produto à loja

BRAVIA

XBR-75X947E
XBR-75X945E
XBR-75X940E
XBR-65X930E
XBR-55X930E

*1 Only on limited region/country/TV model.
Uniquement pour certaines régions/pays/modèles de téléviseurs.
Solo en regiones/países limitados/Modelo de TV.
Somente para determinadas regiões/países/modelos de TV.

Wall-Mount Bracket Installation Guide / Guide d'installation du support de fixation murale / Guía de instalación del soporte de montaje mural / Guia de instalação do suporte de parede

1

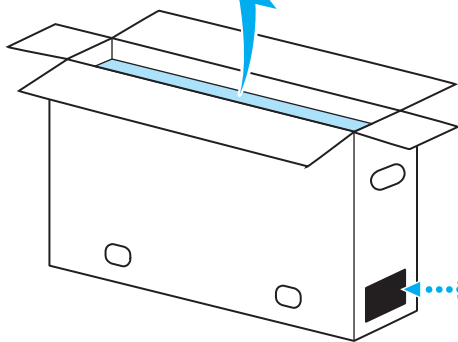
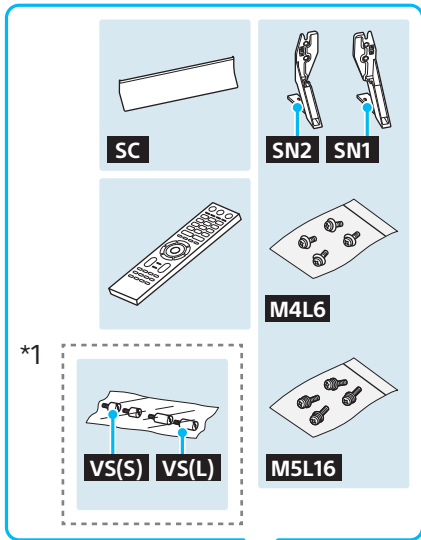
1

2

3

4

5



1.5 N-m/1,5 N-m
(15 kgf·cm)



75

65

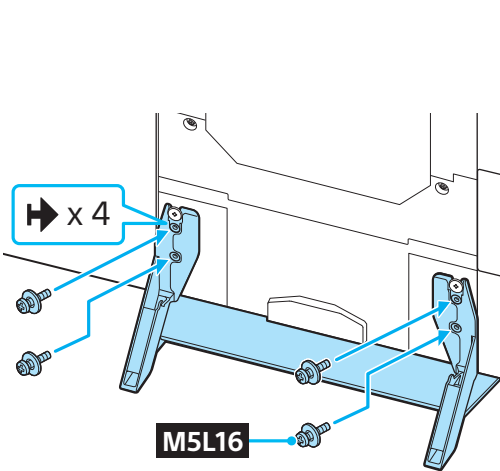
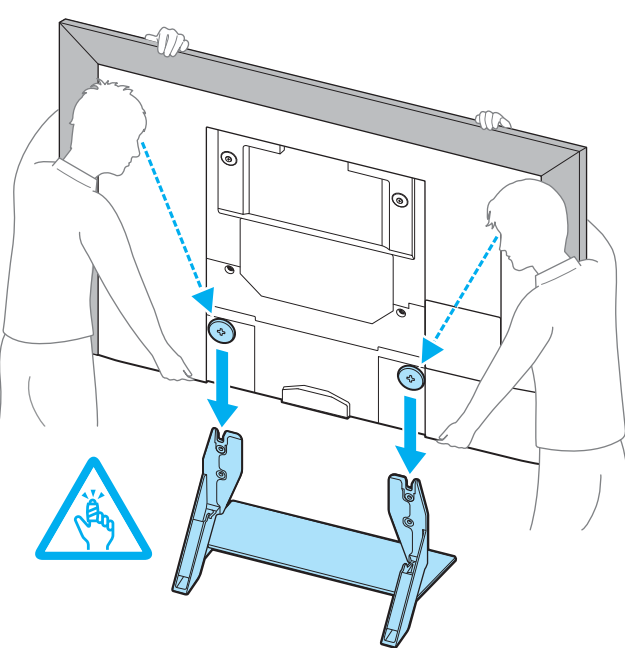
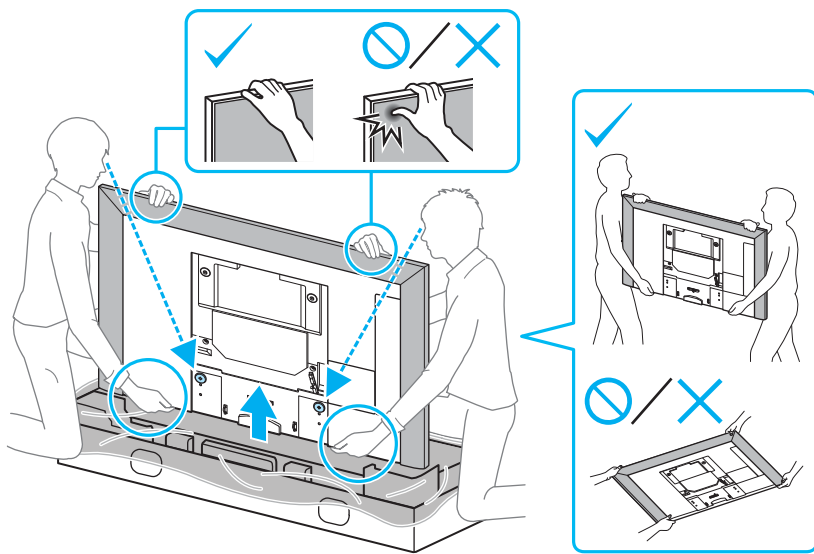
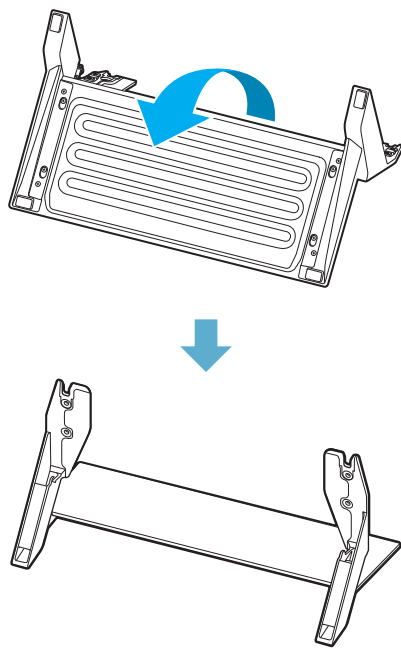
55

6

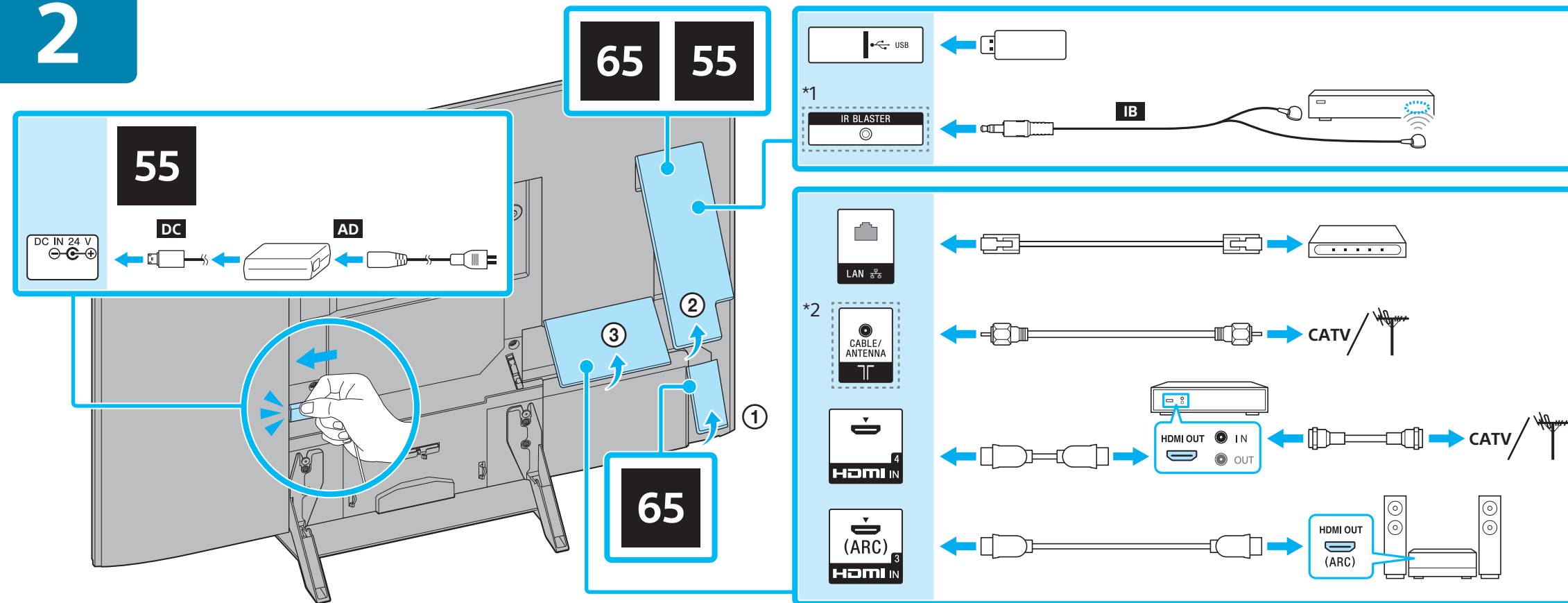
7

8

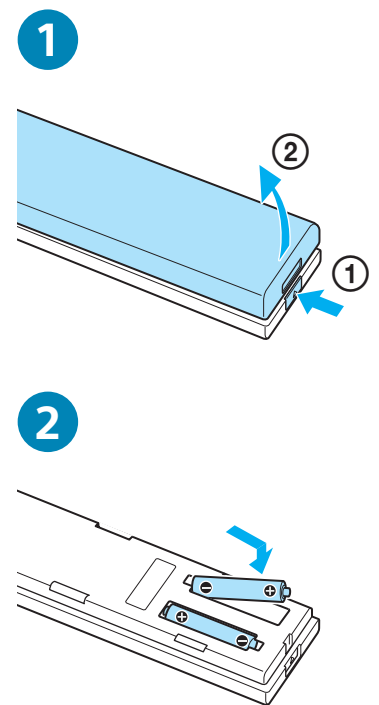
9



2

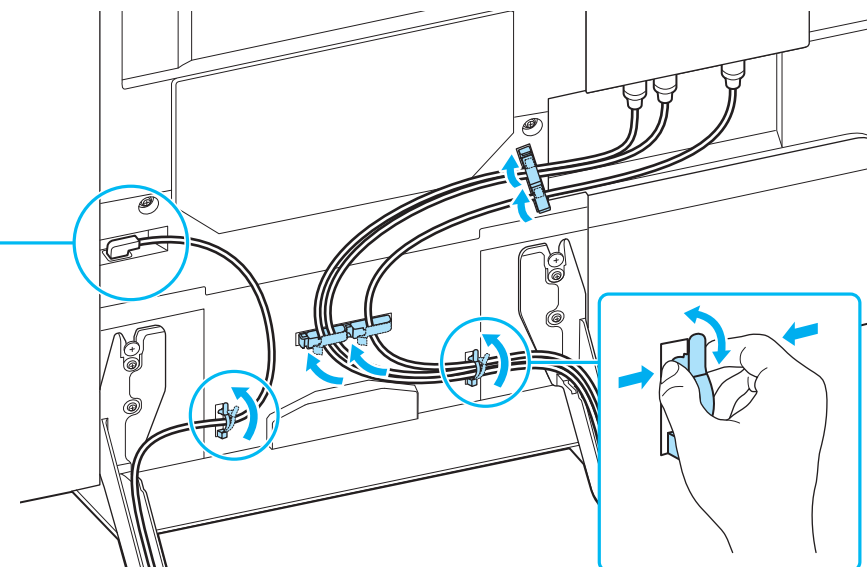
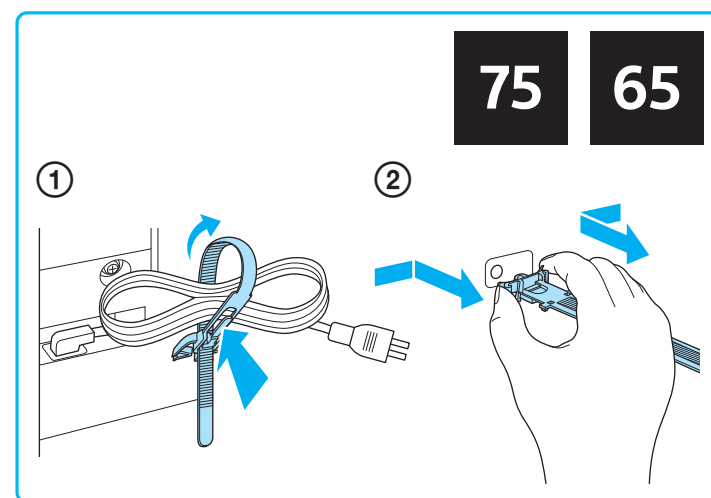


3

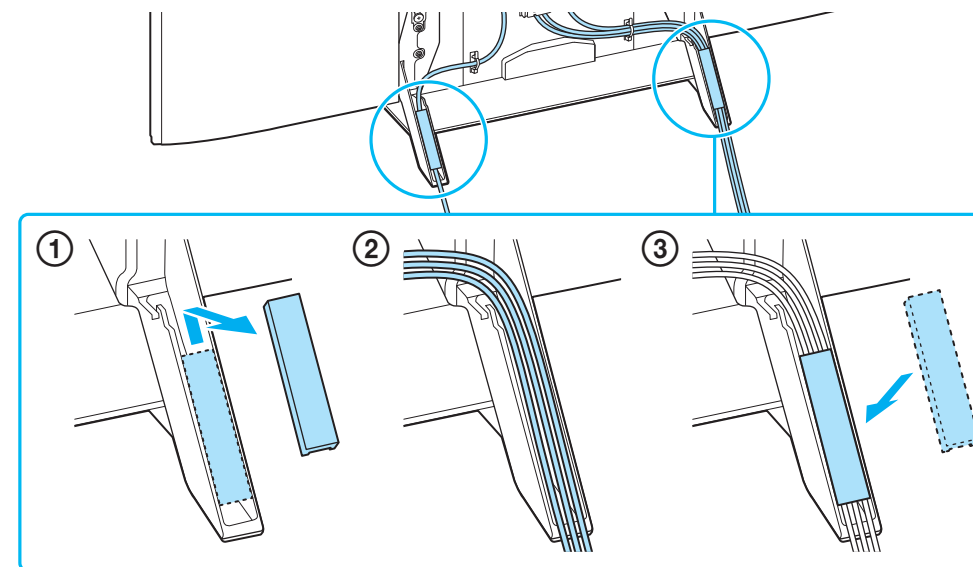


4

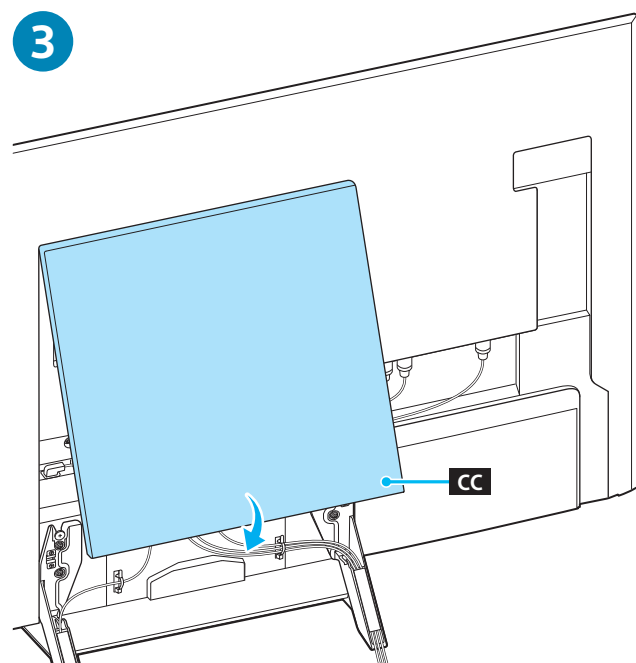
1



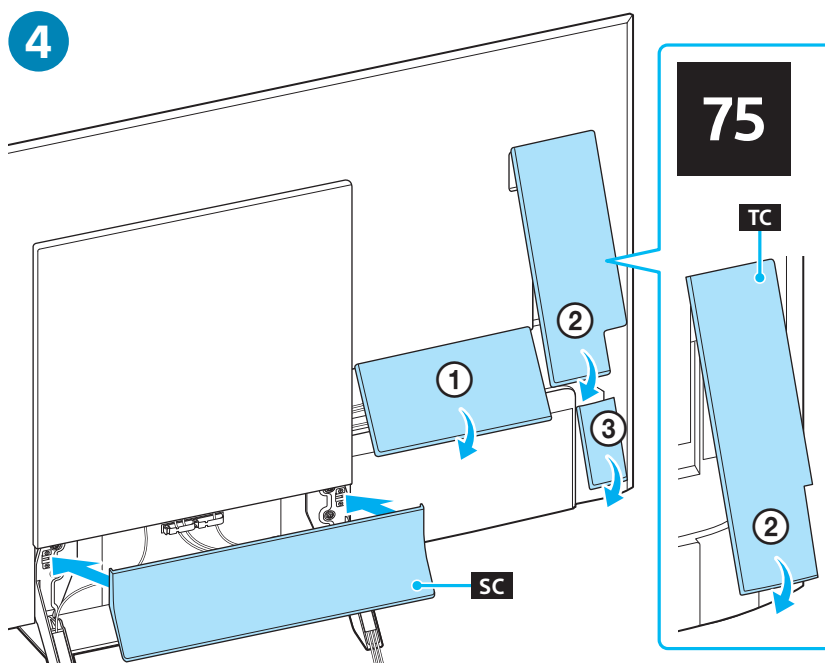
2



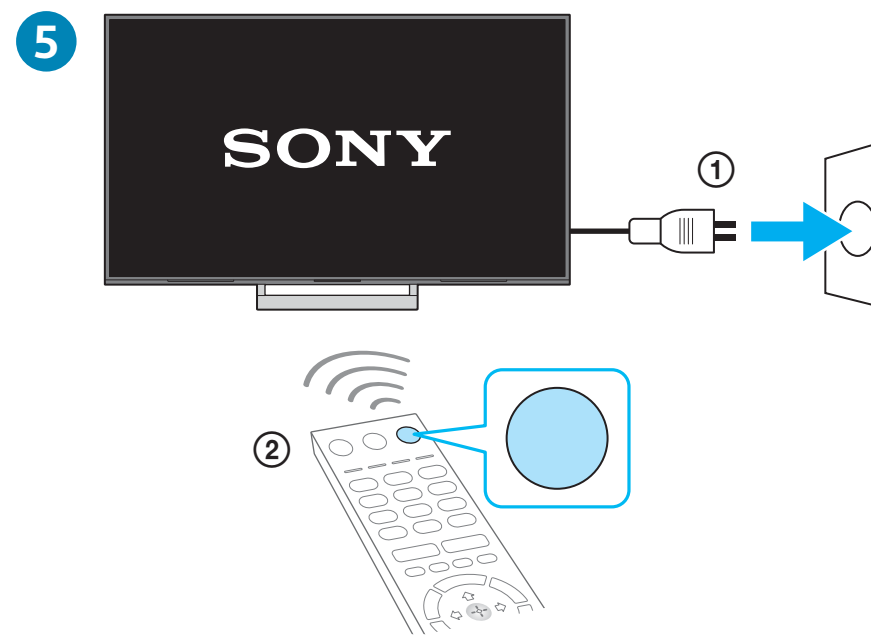
3



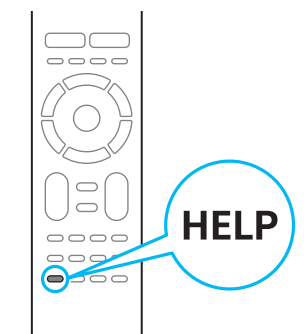
4



5



i



Help / Aide / Ayuda / Ajuda


<http://www.sony.net/tv-how-to-videos>

Tips / Conseils / Consejos / Dicas