



User Manual

Model: WL-660GS
Wireless PCI Adapter

Before You Begin

You must have at least the following:

- A desktop computer with an available PCI 2.2, 32-bit, 5 volt PCI slot
- At least a 500MHz processor and 128MB of memory
- An 802.11a, 802.11b or 802.11g Access Point (for Infrastructure Mode) or another 802.11a, 802.11b, or 802.11g wireless adapter (for Ad-Hoc; Peer-to-Peer networking mode.)

1


Continued...

The Install Screen will appear.

Click **Install Driver**

If the CD Autorun function does not automatically start on your computer, go to **Start > Run** and type "**D:\Driver\setup.exe.**" If it does start, proceed to the next screen.

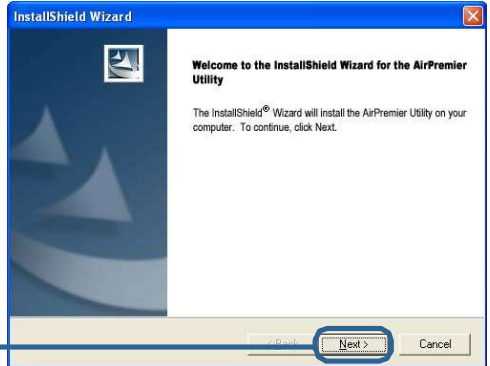
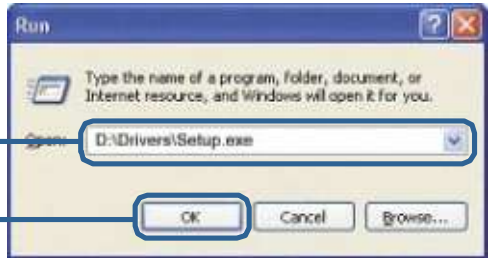
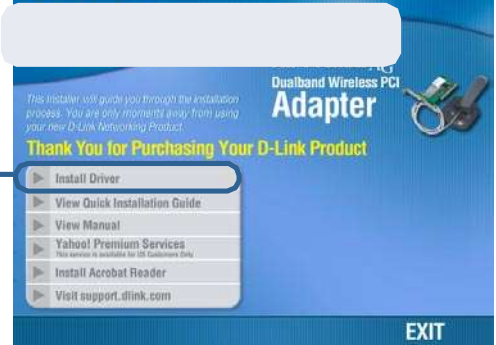
Type "**D:\Driver\setup.exe.**"

 The letter "**D**" represents the letter of the CD-ROM drive. Your CD-ROM drive may be a different drive letter.

Click **OK**

Click **Next**

Click **Next**



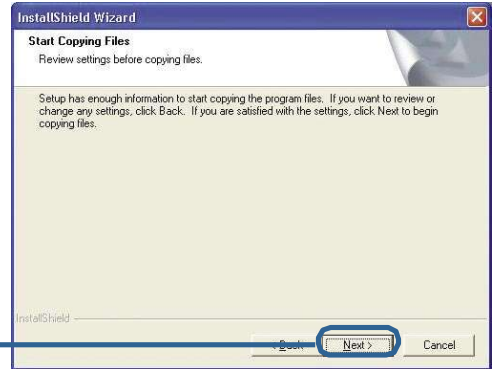
1

Continued...

Click **Next**



Click **Next**



Click **Finish**



Shut down your computer

2

Installing the WL-660GS Wireless PCI Adapter in Your Computer

- A. Make sure to turn off your computer and unplug the power cord before you begin. Remove the back or side cover of the computer.

- B. Carefully guide the WL-660GS antenna through the PCI bracket opening adjacent to the PCI slot you intend to use for the WL-660GS

- C. Install the WL-660GS carefully, and firmly set it into the available PCI slot (which is typically white or cream-colored).

- D. Secure the WL-660GS back panel bracket with its mounting screw.

- E. Replace the computer cover.

Pls. Note that the ant. Should be this one



To avoid damage caused by static electricity, make sure to properly ground yourself by first touching a metal part of your computer to discharge any static electricity before working with the WL-660GS.



2

Installing the WL-660GS Wireless PCI Adapter in Your Computer(cont.)

F. Gently connect the antenna to the antenna stand.

G. Finished!

3

Restart Your Computer

When you restart your computer this **Found New Hardware Wizard (Windows XP)** screen will appear:

Select **Install the software automatically (Recommended)**

Click **Next**



For Windows XP: This **Hardware Installation** alert screen may appear after the desktop computer restarts.

Click **Continue Anyway** to finalize the installation




Click **Finish** to finalize the installation.




3

Continued...

 For Windows 2000, this **Digital Signature Not Found** screen may appear after your computer restarts.

Click **Yes** to finalize the installation.



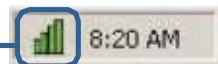
 The software for this device is undergoing Windows Logo testing. Microsoft certification is pending.

4

Your Installation is Complete!

After you have finished the installation in Windows XP, 2000, Me, or 98SE, the WL-660GS **Configuration Utility** will automatically start and the utility icon will appear in the bottom right hand corner of the desktop screen (systray). **If this icon appears GREEN, then you have successfully installed the WL-660GS, are connected to a wireless network and are ready to communicate!**

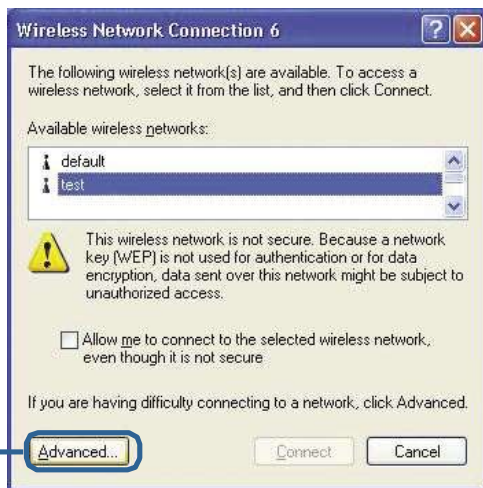
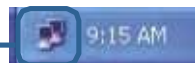
Double-click the **utility icon** to use the configuration utility.



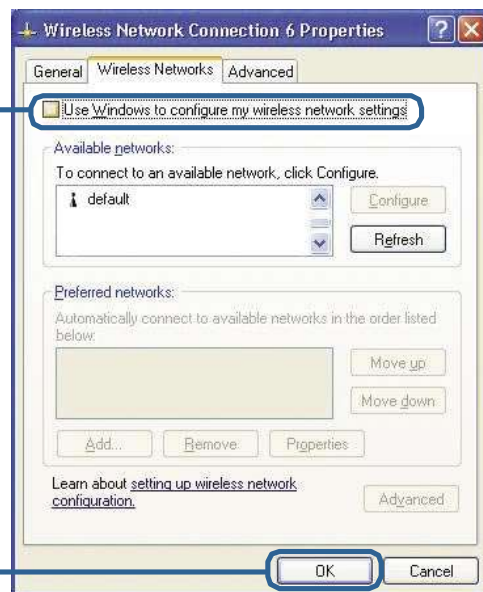
Appendix

For Windows XP, if you wish to use the utility, please do the following steps.

Click the **XP Networking icon** to use the Zero Configuration Wireless Settings.



Click **Advanced**



Uncheck "Use Windows to configure my wireless network settings."

Click **OK**

Appendix (Continued)

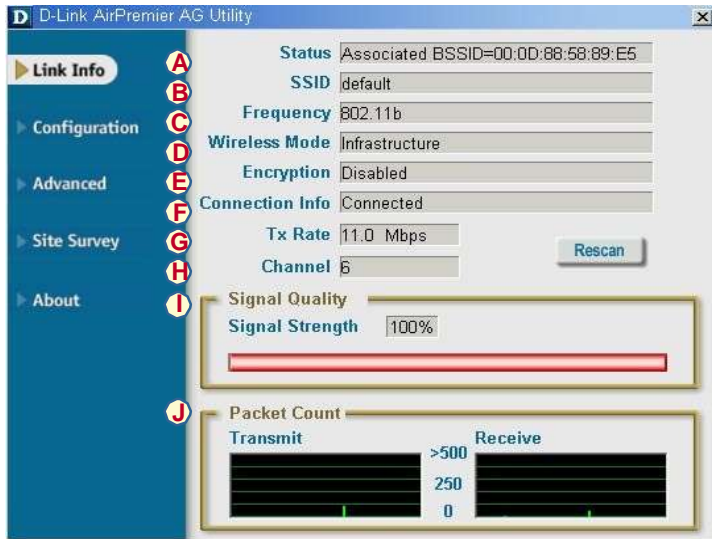
Using the Configuration Utility

A. Status: Displays the MAC address of the access point that is associated with the WL-660GS.

B. SSID: The Service Set Identifier is the name assigned to the wireless network. The factory SSID setting is set to **default**.

C. Frequency: Displays the current frequency used by the current connection to the access point.

D. Wireless Mode: The factory setting is set to **Infrastructure**. Ad-Hoc mode is used for Peer-to-Peer networking.



E. Encryption: Displays the current encryption status of the wireless connection.

F. Connection Info: Displays connected or authenticated information.

G. Tx Rate: The default setting is **Auto**; meaning, Tx Rate settings are automatically determined by the DWL-WL-660GS depending on the distance from the access point.

H. Channel: Displays the channel information. By default, the channel is set to 6 and selection is automatically determined by the wireless access point or router.

I. Link Quality / Signal Strength: Displays the Link Quality for the WL-660GS wireless connection to the access point. The Signal Strength represents the wireless signal between the access point and the WL-660GS. The percentage coincides with the graphical bar.

J. Packet Count: Graphically displays the statistics of data transmitted and received.

k. SSID: The Service Set Identifier is the name assigned to the wireless network. The factory SSID setting is set to **default**. Make changes here to match the SSID on existing wireless router or access point.

L. Wireless Mode: The factory setting is set to **Infrastructure**. Ad-Hoc mode is used for Peer-to-Peer networking.

M. Authentication: You can specify the authentication mode for the wireless network. The default setting is set to Open Authentication.

D-Link AirPremier AG Utility

Link Info

Configuration

Advanced

Site Survey

About

K SSID: Default

L Wireless Mode: Infrastructure

M Authentication: Open

N Data Encryption: Enabled

O Key Length: []

P IEEE802.1X: Disabled

1 []

2 []

3 []

4 []

Authentication Config

IP Settings

N. Data Encryption: The default setting is set to Disable. The adapter supports WEP and AES when encryption is enabled.

O. Key Length: When encryption is enabled, you will have the option to specify the level and key format of the encryption used. Select the appropriate Key Index: 1-4 and enter ACSII or hexadecimal digits in the appropriate field.

P. IEEE 802.1X: When encryption is enabled, you will have the option to specify if you wish to use 802.1x authentication.

II Address Configuration

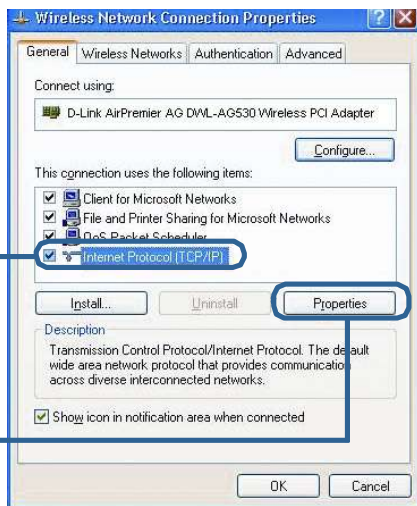
To connect to a network, make sure the proper network settings are configured for WL-660GS.

For Microsoft Windows XP:

Go to **Start > Right-click on My Network Places > select Properties > Right-click and select Properties on the Network Connection** associated with the DWL-AG530.

Click **Internet Protocol (TCP/IP)**

Click **Properties**



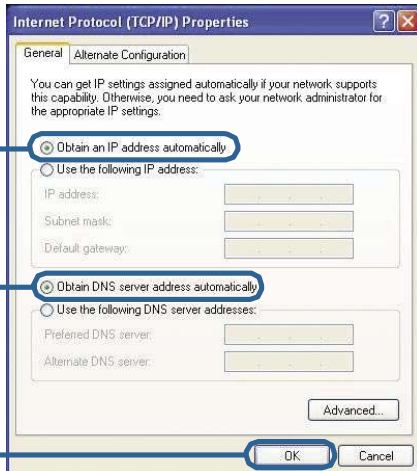
Dynamic IP address setup

Used when a **DHCP server** is available on the local network. (i.e. Router)

Select **Obtain an IP address automatically** (if the wireless router or access point has DHCP server enabled)

Select **Obtain DNS server address automatically**

Click **OK**



Static IP address setup

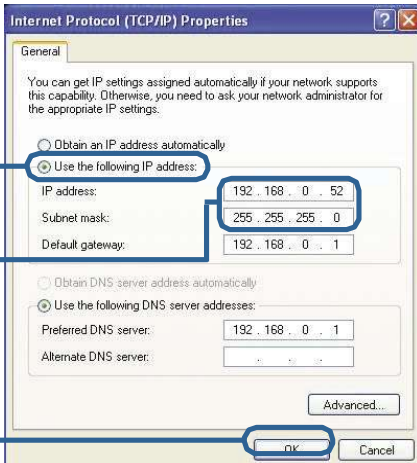
Used when a **DHCP server** is not available on the local network.

Select **Use the following IP address**

IP address: 192.168.0.52
Subnet mask: 255.255.255.0

Input a static IP address in the same range as the wireless router or access point.

Click **OK**

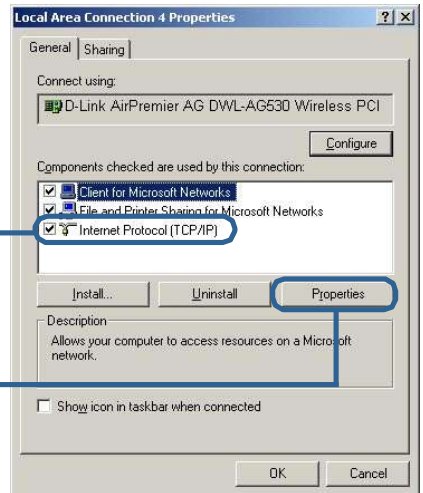


For Windows 2000 users:

Go to **Start > Settings > Network and Dial-up Connections > Right Click and select Properties** on the **Local Area Connection** associated with the WL-660GS.

Click **Internet Protocol (TCP/IP)**

Click **Properties**



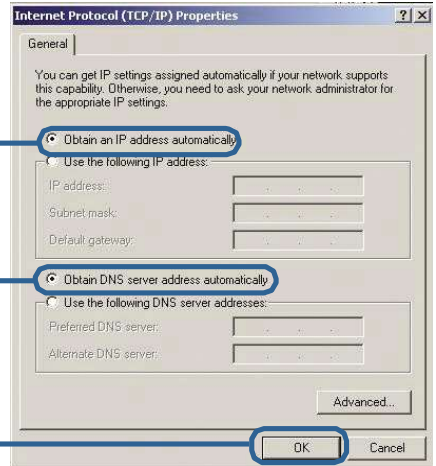
Dynamic IP address setup

Used when a **DHCP server** is available on the local network. (i.e. Router)

Select **Obtain an IP address automatically** (if the wireless router or access point has DHCP server enabled)

Select **Obtain DNS server address automatically**

Click **OK**



Static IP address setup

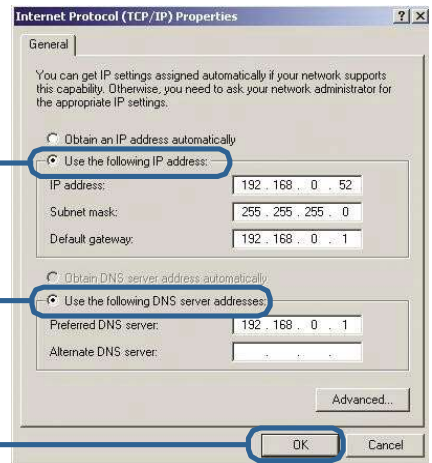
Used when a **DHCP server** is not available on the local network.

Select **Use the following IP address**

IP address: 192.168.0.52
Subnet mask: 255.255.255.0

Input a static IP address in the same range as the wireless router or access point.

Click **OK**



DGT 警語：

經型式認證合格之低功率射頻電機，非經許可，公司、商號或使用者均不得擅自變更頻率、加大功率或變更原設計之特性及功能。

低功率射頻電機之使用不得影響飛航安全及干擾合法通信；經發現有干擾現象時，應立即停用，並改善至無干擾時方得繼續使用。前項合法通信，指依電信法規定作業之無線電通信。低功率射頻電機須忍受合法通信或工業、科學及醫療用電波輻射性電機設備之干擾。

Federal Communication Commission Interference Statement

This equipment has been tested and found to comply with the limits for a Class B digital device, pursuant to Part 15 of the FCC Rules. These limits are designed to provide reasonable protection against harmful interference in a residential installation. This equipment generates, uses and can radiate radio frequency energy and, if not installed and used in accordance with the instructions, may cause harmful interference to radio communications. However, there is no guarantee that interference will not occur in a particular installation. If this equipment does cause harmful interference to radio or television reception, which can be determined by turning the equipment off and on, the user is encouraged to try to correct the interference by one of the following measures:

- Reorient or relocate the receiving antenna.
- Increase the separation between the equipment and receiver.
- Connect the equipment into an outlet on a circuit different from that to which the receiver is connected.
- Consult the dealer or an experienced radio/TV technician for help.

This device complies with Part 15 of the FCC Rules. Operation is subject to the following two conditions: (1) This device may not cause harmful interference, and (2) this device must accept any interference received, including interference that may cause undesired operation.

FCC Caution: Any changes or modifications not expressly approved by the party responsible for compliance could void the user's authority to operate this equipment.

IMPORTANT NOTE:

FCC Radiation Exposure Statement:

This equipment complies with FCC radiation exposure limits set forth for an uncontrolled environment. This equipment should be installed and operated with minimum distance 20cm between the radiator & your body.

This transmitter must not be co-located or operating in conjunction with any other antenna or transmitter.