

The most important thing we build is trust

### INCA Repeater Remote Commands

0	On	4	N/A	8	Channel 3	C	Power Level 3
1	Off (sleep mode)	5	N/A	9	Channel 4	D	Power Level 4
2	N/A	6	Channel 1	A	Power Level 1	E	N/A
3	N/A	7	Channel 2	B	Power Level 2	F	N/A

### INCA Repeater Software Configuration

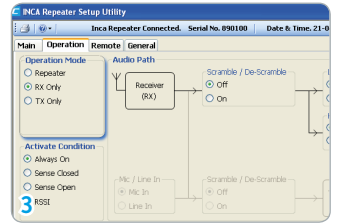
To configure the INCA Repeater software:

1. Connect the INCA Repeater to a computer containing the INCA Repeater Setup Utility software.
2. The power LED will illuminate Orange to indicate the INCA Repeater is receiving power via the USB.

**Note:** Connecting external power to the INCA Repeater is not required when programming the INCA Repeater. The INCA Repeater is powered via USB for software configuration.

3. Select the Operating Mode in the Operation Tab - (Repeater, Receiver (RX) only, or Transmitter (TX) only).

**Note:** The specified operating mode will determine what options and settings are available when configuring the INCA Repeater.



4. Set the Activate Condition in the Operation Tab.

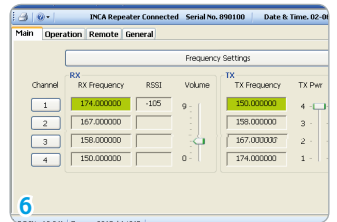
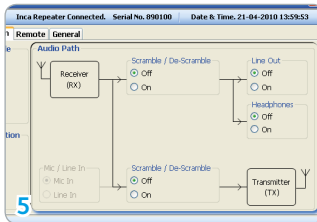
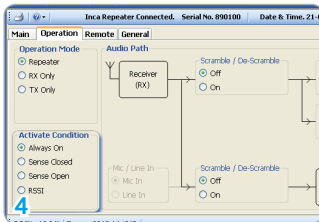
**Note:** The RSSI activate condition is only available when operating the device in Repeater mode.

5. Set the Audio Path options in the Operation Tab.

**Note:** Two audio paths exist with-in the INCA Repeater. One for on-site listening (repeater location) and the other for the rebroadcasted signal. The operating mode determines which configuration options for the audio path are available.

6. Set the required Frequencies, Volume, and Power level in the Main Tab.

**Note:** If the user is employing the device in Repeater mode the recommended technique is to invert the RX frequencies with the TX frequencies ensuring the paired TX and RX frequency contains at least 100 MHz of frequency separation between paired channels.



### INCA Repeater Software Configuration (continued)

7. Set the Remote Control option in the Remote Tab, if required.

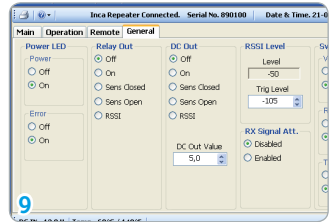
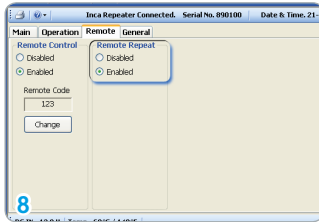
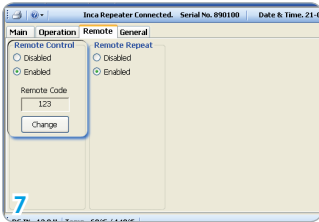
**Note:** It is possible to control different functions of the INCA Repeater with the X-IDER and/or INCA GM Keyfob, if enabled.

8. Set the Remote Repeat option in the Remote Tab, if required.

**Note:** It is possible to control installed transmitter(s) by broadcasting the remote commands from and X-IDER and/or INCA GM Keyfob through the INCA Repeater, if enabled.

9. Set additional options in the General Tab, if required.

**Note:** Refer to the User Manual for additional information on the options available in the General Tab.



### INCA Repeater Hardware Setup

To setup the INCA Repeater hardware:

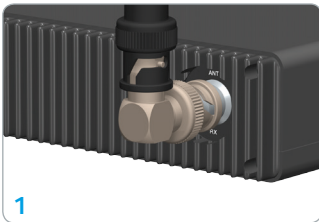
1. Connect an antenna to the ANT RX BNC connector.

**Note:** This antenna is NOT required when operating the INCA Repeater in TX mode.

2. Connect an antenna to the ANT TX BNC connector.

**Note:** This antenna is NOT required when operating the INCA Repeater in RX mode.

3. Connect a remote control antenna to the REMOTE BNC connector, if Remote Control or Remote Repeat is required.



4. Connect a 12 V DC power supply to the 12 V DC IN Lemo jack.

**Note:** Do NOT connect the INCA Repeater directly to AC power. The INCA Repeater supply voltage range is 10.0 V to 15.6 V DC.

Only use the included power supply or an external battery.

5. Connect the required audio in or audio out cables depending on the operating mode configuration.

6. Slide the power switch to the left to turn On the INCA Repeater. In normal configuration, the LED will illuminate green.



This device is FCC approved and hence compliant to FCC regulations.

Any changes or modifications to the device which are not expressly approved by the manufacturer will void the compliance and the users authority to operate the device. To ensure safe levels of RF signal exposure a minimum distance of 50 cm (2 ft) to the antennas must be kept.

FCC ID no.: QKE-90136040

The device is intended for operation with authorized antennas and cables only. Authorized antennas and cables are:

67002217 Whip Antenna  
67002233 Antenna VHF  
65914003 Antenna Cable

67002223 Antenna RC  
67002234 Antenna Car Mount  
65914004 Antenna Cable

Note: This equipment has been tested and found to comply with the limits for a Class A digital device, pursuant to part 15 of the FCC Rules. These limits are designed to provide reasonable protection against harmful interference when the equipment is operated in a commercial environment. This equipment generates, uses, and can radiate radio frequency energy and, if not installed and used in accordance with the instruction manual, may cause harmful interference to radio communications. Operation of this equipment in a residential area is likely to cause harmful interference in which case the user will be required to correct the interference at his own expense.



*FCC approval only applies to the VHF version of the INCA Repeater.*