

SMARTCODE 916

TOUCHSCREEN ELECTRONIC DEADBOLT

Installation Guide

Required Tools

Additional Tools (depending on application)

Use and programming instructions are located on the reverse side of this document.

Parts in the Box

Latches and Strike	Exterior Assembly	Interior Assembly
<p>A2</p> <p>If needed, please contact Kwikset to order a drive-in latch for your lock.</p> <p>Kwikset 1-866-863-6584 www.kwikset.com</p>		

1 Check dimensions

Additional door preparation may be required for doors with 1-1/2" (38 mm) holes. Consult the drilling instructions at www.kwikset.com/doorprep.

2 Extend latch bolt

3 Adjust the backset of latch (if needed)

A Hold the latch in front of the door hole, with the latch face flush against the door edge.

B If the latch holes are centered in the door hole, no adjustment is required. Proceed to step 4. If the latch holes are NOT centered, adjust latch. See "Latch Adjustment."

Latch Adjustment (only if needed)

4 Install latch

For doors with chiseled edge

For doors without chiseled edge

5 Prepare exterior keypad

For doors with 2-1/8" (54 mm) holes

Install "F"

For doors with 1-1/2" (38 mm) holes

Discard "F"

6 Install keypad and mounting plate

A Locate screws (Q) and keep them within reach.

B Cable goes underneath latch.

C Support exterior assembly during mounting plate installation. Route cable through center hole, then push cable into bottom hole.

D Keep parallel to edge of door. Tighten screws evenly.

E Insert key and test latch. If latch does not extend or retract smoothly, adjust screws (Q). Remove key when finished and make sure the latch bolt is fully extended.

7 Disassemble interior assembly and load battery pack

A Make sure turnpiece is in the vertical position.

B Make sure turnpiece shaft is rotated as shown.

C Make sure turnpiece shaft is rotated as shown.

D Make sure turnpiece is in the vertical position.

E Ensure correct polarity. For best results, use new, non-rechargeable Alkaline batteries only. **Do not install battery pack yet! Alarm will sound if battery is installed before cable is connected.**

8 Install interior assembly

A align. Ensure tight cable connection.

B Lay excess cable flat inside the bottom of the interior housing.

C

D N (2x)

9 Install battery pack and perform door handing process

A Make sure the door is open, and insert the battery pack.

B After a few seconds, the latch bolt will retract and extend on its own to learn the orientation of the door. This is called the **door handing process**, and it is crucial to lock operation.

C If the touchscreen indicates a failure, attempt this procedure again. If the door handing process is still unsuccessful after a second attempt, consult the online Troubleshooting Guide, available on the SmartCode 916 product page of www.kwikset.com.

Once the door handing process is complete, the touchscreen will indicate success or failure:

- Success:** flashing checkmark symbol and single column of digits
- Failure:** flashing "X" pattern

10 Install strike

11 Program the lock

Programming instructions are located on the reverse side of this document.

12 Install the battery cover and re-key the lock

A

B ball tip. Keep "R" in a safe place, as you will need it to access the back panel for additional programming.

C If needed, re-key the lock to work with your existing key. See the supplied SmartKey Re-key instructions for more information. Make sure the door is open and switch #2 (Auto-Lock) is in the OFF position during re-keying procedure. If desired, switch #2 can be turned back on after re-keying is complete.

Template

If your door requires drilling, cut out the template and place it on the exterior side of the door. Complete door drilling instructions are available at www.kwikset.com/doorprep.

SMARTCODE 916

TOUCHSCREEN ELECTRONIC DEADBOLT

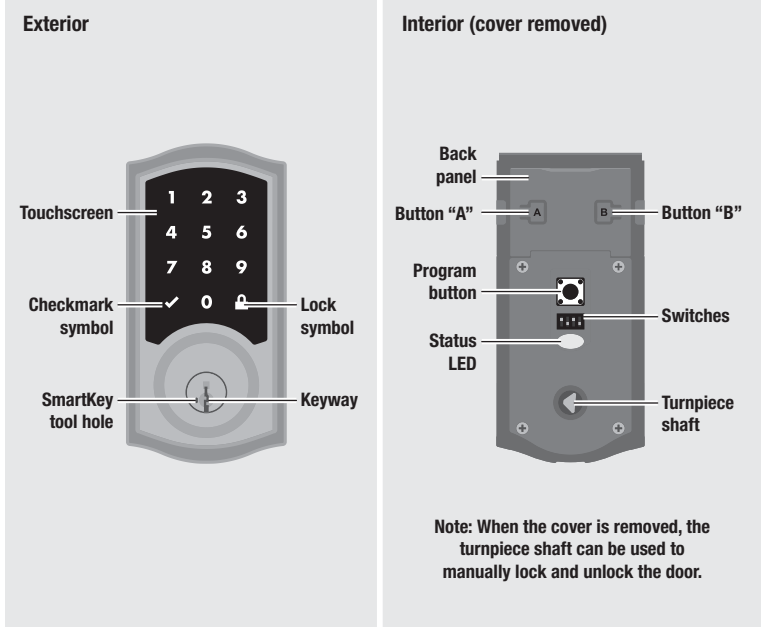
User Guide

Kwikset
1-866-863-6584
www.kwikset.com

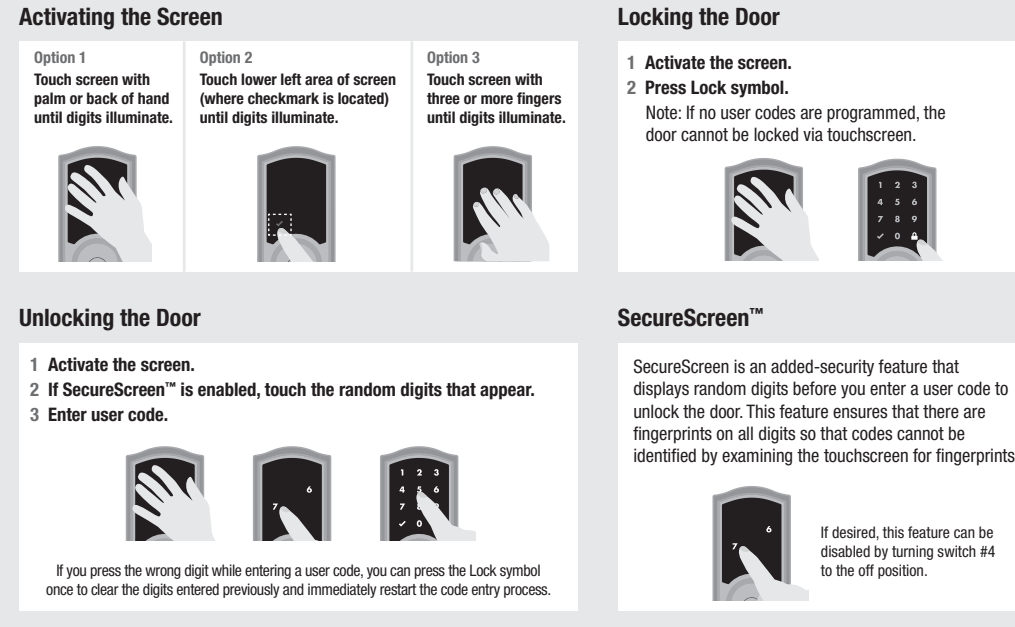
Troubleshooting and FAQs are available on the SmartCode 916 product page online at www.kwikset.com.

Installation instructions are located on the reverse side of this document.

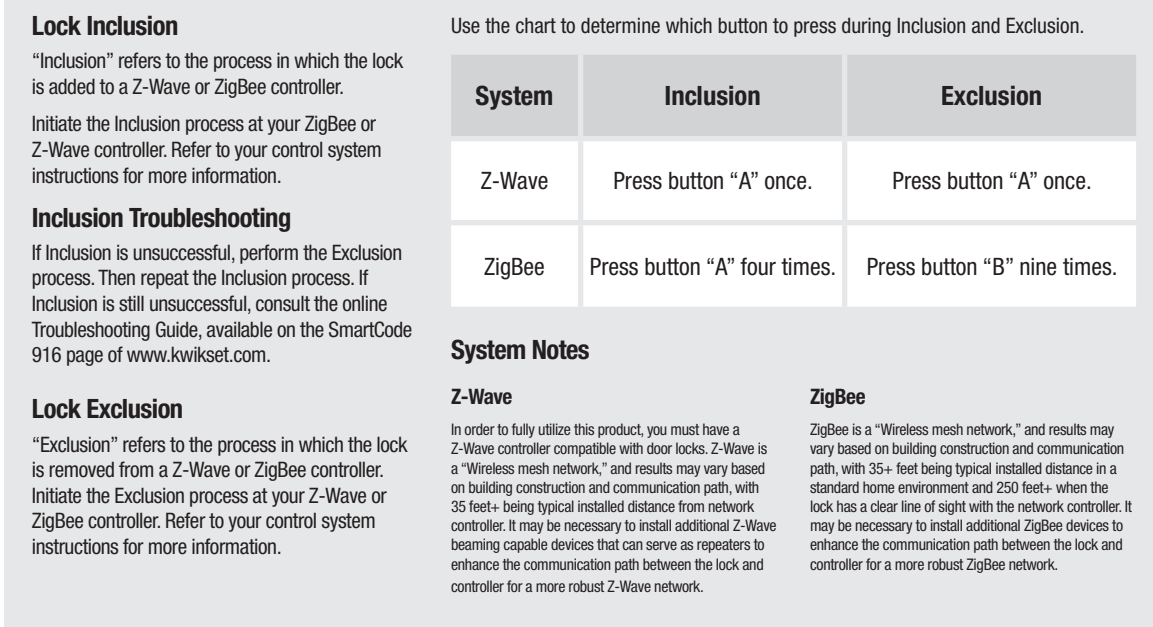
A SmartCode at a Glance



B Normal Operation



C Z-Wave & ZigBee Systems



D Programming Codes

a Programming Information

It is recommended that you add and delete all user codes through your Z-Wave or ZigBee control system. If your system does not allow this, the following sections will provide instructions for how to add and delete codes at the lock.

User Codes Requirements

Each user code must be a unique code between 4 and 8 digits, depending on your control system. A total of 30 user codes may be programmed.

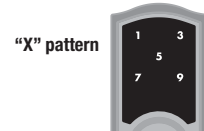
Programming Behavior

Successful Programming
The Checkmark symbol will illuminate and you will hear one beep*.



Unsuccessful Programming

The "X" pattern will flash three times, and you will hear three beeps*.



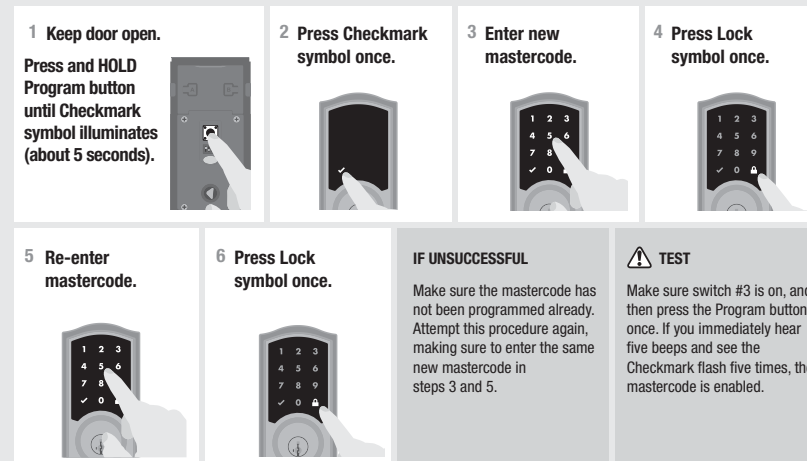
Programming Timeout

If the screen is not pressed for 20 seconds, the system will time out (indicated by three beeps* and the "X" pattern flashing three times), and you will need to restart the procedure.

*Beeping sound will only be heard if switch #3 is on.

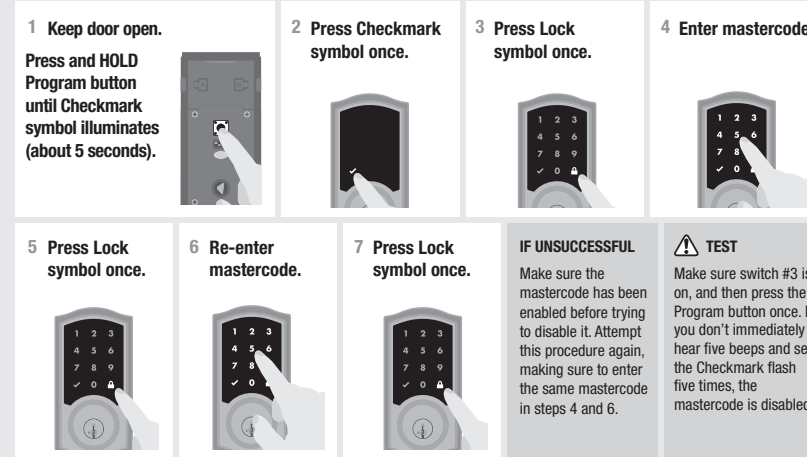
b Enabling and Adding a Mastercode (Optional for Enhanced Security)

User codes can be programmed with or without a mastercode. Using a mastercode is an optional, added-security measure. It is not enabled by default. A mastercode is used to add and delete user codes, but it cannot unlock the door (unless the same code is programmed as a user code, though this is not recommended). The mastercode must be 4-8 digits.



If the screen is not pressed for 20 seconds, the system will time out, and you will need to restart the procedure.

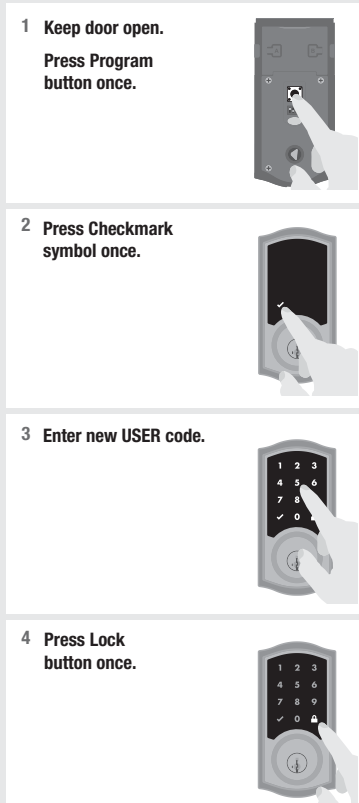
c Disabling and Deleting the Mastercode



If the screen is not pressed for 20 seconds, the system will time out, and you will need to restart the procedure.

d Adding User Codes

Mastercode NOT enabled:



IF UNSUCCESSFUL

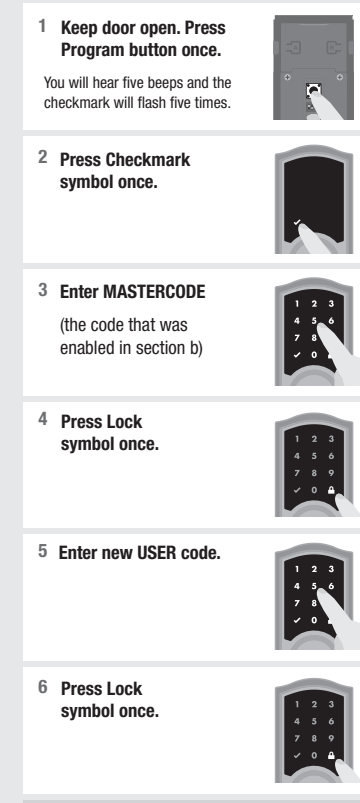
Make sure the user code not a duplicate and that it is between 4 and 8 digits during your next attempt. Make sure the lock has room for an additional code. If all user code positions are filled, delete a code to make room for this one.

TEST CODE

While the door is open and locked, test the user code to make sure it unlocks the door.

If the screen is not pressed for 20 seconds, the system will time out, and you will need to restart the procedure.

Mastercode enabled:



IF UNSUCCESSFUL

Make sure the user code not a duplicate and that it is between 4 and 8 digits during your next attempt. Make sure the lock has room for an additional code. If all user code positions are filled, delete a code to make room for this one.

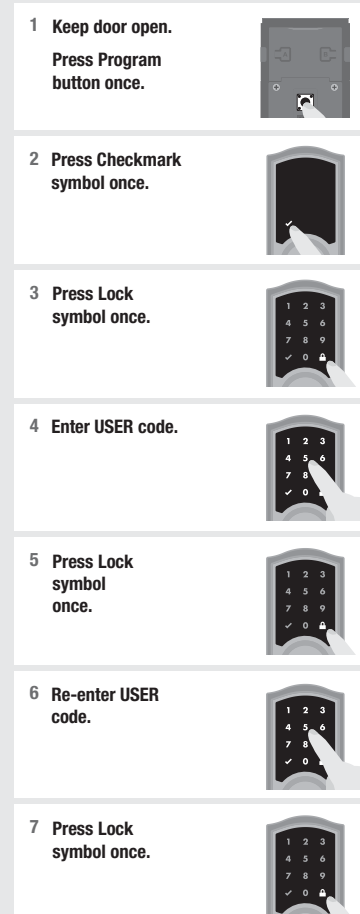
TEST CODE

While the door is open and locked, test the user code to make sure it unlocks the door.

If the screen is not pressed for 20 seconds, the system will time out, and you will need to restart the procedure.

e Deleting a Single User Code

Mastercode NOT enabled:



IF UNSUCCESSFUL

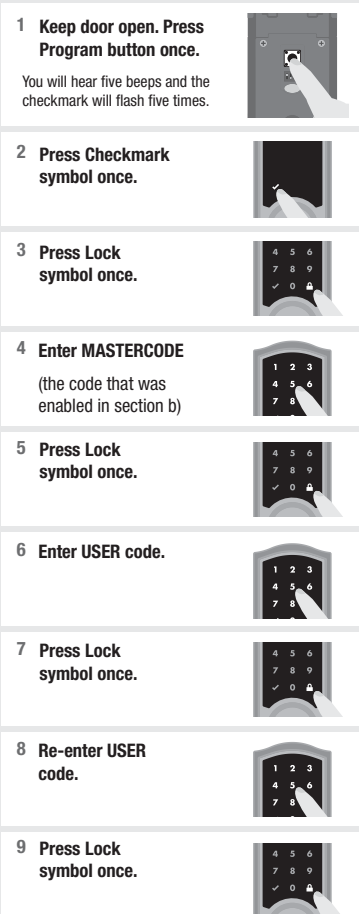
Make sure to enter the same valid code in steps 4 and 6.

TEST CODE

While the door is open and locked, test the user code to make sure it no longer unlocks the door.

If the screen is not pressed for 20 seconds, the system will time out, and you will need to restart the procedure.

Mastercode enabled:



IF UNSUCCESSFUL

Make sure to enter the same valid code in steps 6 and 8. Make sure to enter a valid mastercode in step 4.

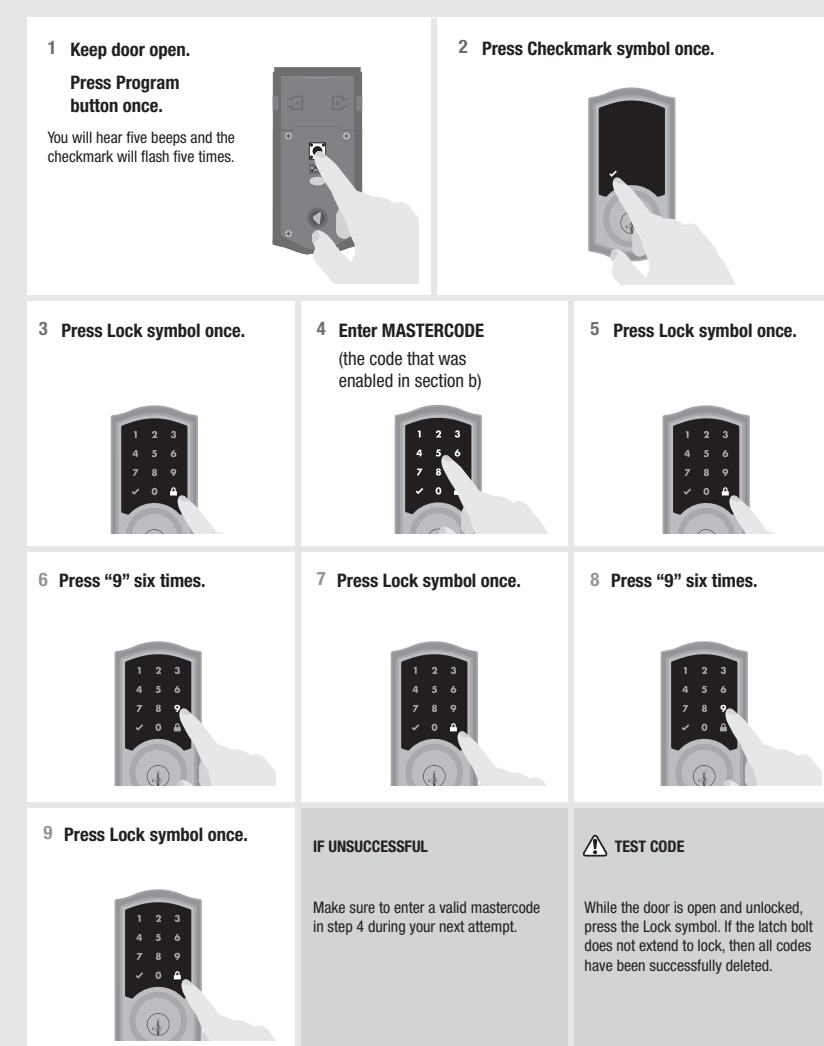
TEST CODE

While the door is open and locked, test the user code to make sure it no longer unlocks the door.

If the screen is not pressed for 20 seconds, the system will time out, and you will need to restart the procedure.

f Deleting All User Codes

This procedure can only be performed if the mastercode is enabled. Note: The Auto-Lock feature (switch #2) will be disabled if all codes are deleted.



If the screen is not pressed for 20 seconds, the system will time out, and you will need to restart the procedure.

E Regulatory Compliance

This product complies with standards established by the following regulatory bodies:

- Federal Communications Commission (FCC)
- Industry Canada

FCC

This device complies with Part 15 of the FCC Rules. Operation is subject to the following two conditions:
(1) This device may not cause harmful interference, and
(2) this device must accept any interference received, including interference that may cause undesired operation.

IMPORTANT! Changes or modifications not expressly approved by the manufacturer could void the user's authority to operate the equipment.

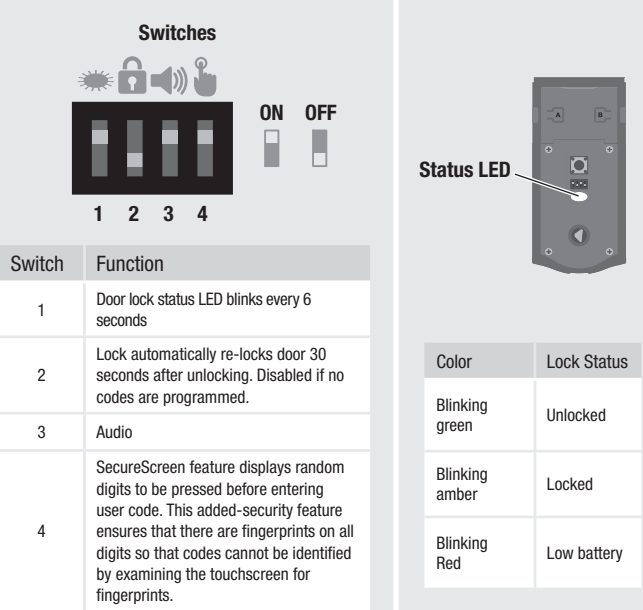
Industry Canada

This device complies with Industry Canada licence-exempt RSS standards. Operation is subject to the following two conditions: (1) this device may not cause interference, and (2) this device must accept any interference, including interference that may cause undesired operation of the device.

does cause harmful interference to radio or television reception, which can be determined by turning the equipment off and on, the user is encouraged to try to correct the interference by one or more of the following measures:

- Reorient or relocate the receiving antenna.
- Increase the separation between the equipment and receiver.
- Connect the equipment into an outlet on a circuit different from that to which the receiver is connected.
- Consult the dealer or an experienced radio/TV technician for help.

F Switches, Status LED Colors, and System Alerts

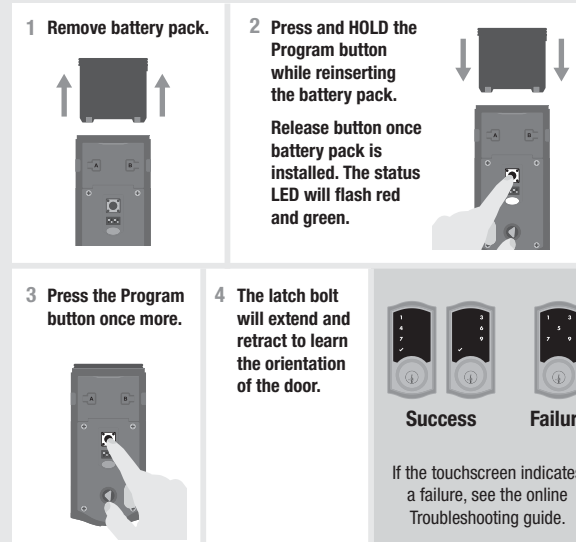


Display	Alert	Reason	Solution
	"X" pattern flashes one time with one beep*.	One incorrect code entered.	Re-enter code.
	"X" pattern flashes three times with three beeps*.	No user code programmed. Programming timeout after 20 seconds. Unsuccessful programming.	Program at least one user code. Attempt programming procedure again.
	"X" pattern flashes 15 times with 15 beeps*.	Three incorrect codes entered within one minute.	Re-enter code after 60 second touchscreen lockout.
	Checkmark and lock symbols flash simultaneously five times with long continuous beep*.	Low battery.	Replace batteries.
	Checkmark and lock symbols alternate flashing five times with long continuous beep*.	Door jammed while attempting to lock.	Manually re-lock door. If needed, reposition strike.
N/A	Lock beeps continuously.	Interior assembly is disconnected from exterior.	Remove battery pack, reconnect the interior to the exterior, then replace battery pack.

*Beeping sound will only be heard if switch #3 is on.

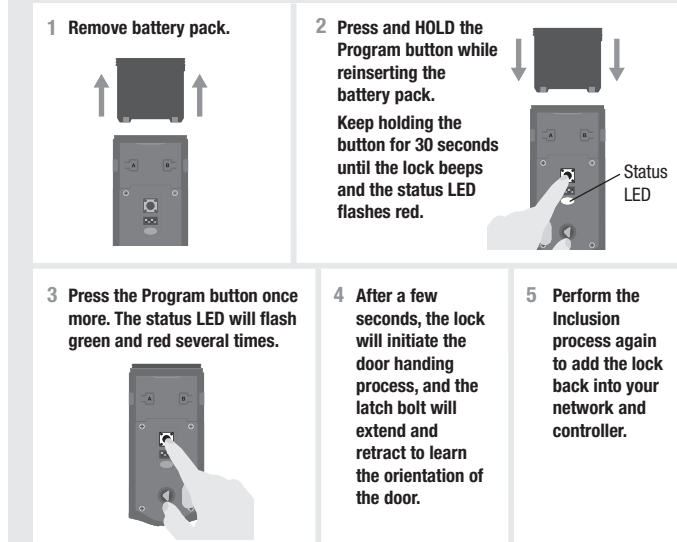
G Manual Door Handling

If needed, the door handing process can be initiated manually. This is useful if the lock is being moved to a different door.



H Factory Reset

A factory reset will delete all codes associated with the lock.



I Important Safeguards

- Read all instructions in their entirety.
 - Familiarize yourself with all warning and caution statements.
 - Remind all family members of safety precautions.
 - Restrict access to your lock's back panel and routinely check your settings to ensure they have not been altered without your knowledge.
 - Protect your user codes and mastercode.
 - Dispose of used batteries according to local laws and regulations.
 - For added security, turn on switch #4.
- CAUTION:** Prevent unauthorized entry. Since anyone with access to the back panel can change the user codes, you must restrict access to the back panel and routinely check the user codes to ensure they have not been altered without your knowledge. The use of a mastercode can help protect your system's settings.
- WARNING:** This Manufacturer advises that no lock can provide complete security by itself. This lock may be defeated by forcible or technical means, or evaded by entry elsewhere on the property. No lock can substitute for caution, awareness of your environment, and common sense. Builder's hardware is available in multiple performance grades to suit the application. In order to enhance security and reduce risk, you should consult a qualified locksmith or other security professional.