

Regulatory Compliance

This product complies with standards established by the following regulatory bodies:

- Federal Communications Commission (FCC)
- Industry Canada

FCC

This device complies with Part 15 of the FCC Rules. Operation is subject to the following two conditions: (1) this device may not cause harmful interference, and (2) this device must accept any interference received, including interference that may cause undesired operation.

This equipment has been tested and found to comply with the limits for a Class B digital device, pursuant to Part 15 of the FCC Rules. These limits are designed to provide reasonable protection against harmful interference in a residential installation. This equipment generates, uses, and can radiate radio frequency energy and, if not installed and used in accordance with the instructions, may cause harmful interference to radio communications. However, there is no guarantee that interference will not occur in a particular installation. If this equipment does cause harmful interference to radio or television reception, which can be determined by turning the equipment off and on, the user is encouraged to try to correct the interference by one or more of the following measures:

- Reorient or relocate the receiving antenna.
- Increase the separation between the equipment and receiver.
- Connect the equipment into an outlet on a circuit different from that to which the receiver is connected.
- Consult the dealer or an experienced radio/TV technician for help.

IMPORTANT! Changes or modifications not expressly approved by the manufacturer could void the user's authority to operate the equipment.

Industry Canada

This device complies with Industry Canada licence-exempt RSS standard(s). Operation is subject to the following two conditions: (1) this device may not cause interference, and (2) this device must accept any interference, including interference that may cause undesired operation of the device.

Cumplimiento Normativo

Este producto cumple con las normas establecidas por los siguientes organismos reguladores:

- Comisión Federal de Comunicaciones (FCC)
- Industry Canada

FCC

Este dispositivo cumple con la 15ª parte del reglamento de la FCC. Su funcionamiento está sujeto a las siguientes dos condiciones: (1) este dispositivo no deberá causar ninguna interferencia dañina, y (2) este dispositivo deberá aceptar cualquier interferencia recibida, incluyendo aquella que podría causar un funcionamiento no deseado.

Se realizaron pruebas a este equipo cuyos resultados revelaron que cumple con los límites establecidos para un dispositivo digital de la Clase B, conforme a la 15ª parte del reglamento de la FCC. Estos límites han sido impuestos para proporcionar protección razonable contra interferencias dañinas en una instalación residencial. Este equipo genera, utiliza y puede irradiar energía de radiofrecuencia y, si no se instala y utiliza según lo que indican las instrucciones, podría causar interferencia dañina en radiocomunicaciones. Sin embargo, no hay garantía de que la interferencia no ocurrirá en determinadas instalaciones. Si este equipo efectivamente causa interferencia en la recepción de radio o televisión, la cual puede determinarse encendiendo y apagando el equipo, sugerimos al usuario que intente corregir dicha interferencia tomando una o más de las siguientes medidas:

- Volver a orientar o ubicar la antena receptora.
- Incrementar la distancia entre el equipo y el receptor.
- Conectar el equipo a una toma de corriente en un circuito distinto del circuito en el cual está conectado el receptor.
- Consultar con el distribuidor o un técnico de radio y TV con experiencia para obtener su ayuda.

¡IMPORTANTE! Todo cambio o modificación no aprobado expresamente por el fabricante podría desautorizar al usuario para operar el equipo.

Industria de Canada

Este dispositivo cumple con las normas de la Industria de Canada licencia-exenta RSS. Su funcionamiento está sujeto a las siguientes dos condiciones: (1) este dispositivo no deberá causar ninguna interferencia dañina, y (2) este dispositivo deberá aceptar cualquier interferencia, incluyendo aquella que podría causar el funcionamiento no deseado del dispositivo.

Conformité réglementaire

Ce produit est conforme aux normes établies par les organismes de réglementation suivants :

- Federal Communications Commission (FCC)
- Industrie Canada

FCC

Cet appareil est conforme aux limites prescrites dans la partie 15 des règlements de la Federal Communication Commission (FCC) des États-Unis. Son utilisation est subordonnée aux conditions suivantes : (1) l'appareil ne doit pas causer d'interférence nuisibles, et (2) il doit accepter toute interférence, y compris celles qui peuvent causer son mauvais fonctionnement.

Lors des tests effectués, cet appareil s'est révélé conforme aux limites prescrites dans la partie 15 des règlements de la Federal Communications Commission (FCC) des États-Unis pour un appareil numérique de Classe B. Ces limites ont été fixées pour protéger raisonnablement les installations résidentielles contre les interférences nuisibles. L'appareil produit, utilise et peut émettre des radiofréquences. S'il n'est pas installé et utilisé de la façon prescrite, il peut brouiller les communications radio. Il n'est pas garanti qu'aucune interférence ne se produira. Si l'appareil brouille la réception d'une radio ou d'un téléviseur (pour savoir s'il est à l'origine du brouillage, il suffit de l'éteindre et de le rallumer), l'utilisateur est invité à tenter de corriger la situation en prenant une ou plusieurs des mesures suivantes :

- réorienter ou déplacer l'antenne réceptrice;
- éloigner davantage l'appareil émetteur du récepteur;
- brancher l'appareil dans une prise reliée à un circuit différent de celui auquel le récepteur est relié;
- consulter le détaillant ou un technicien de radiotélévision expérimenté pour obtenir de l'aide.

IMPORTANT! Les modifications qui n'ont pas été expressément approuvées par le fabricant de l'appareil peuvent annuler l'autorisation d'utiliser l'appareil.

Industrie Canada

Cet appareil est conforme aux normes d'Industrie Canada exemptes de licence RSS. L'opération est soumise aux deux conditions: (1) ce dispositif peut ne pas causer l'interférence et (2) ce dispositif doit accepter n'importe quelle interférence, y compris l'interférence qui peut causer le fonctionnement non souhaité du dispositif.



Parts in the box

| Black components | | Gold components | | Silver components | |
|------------------|-----------------------|-----------------|-----------------------|--------------------------|-----------------------|
| Mounting plate | Mounting plate screws | Mounting plate | Mounting plate screws | Mounting plate | Mounting plate screws |
| | | | | | |
| Adapter | | Adapters | | Adapter | |
| | | | | | |
| Interior cover | Interior assembly | Battery pack | AA batteries | Interior assembly screws | Interior cover screws |
| | | | | | |
| | | | | 49191 | 64109 |

ENGLISH



Installation and User Guide

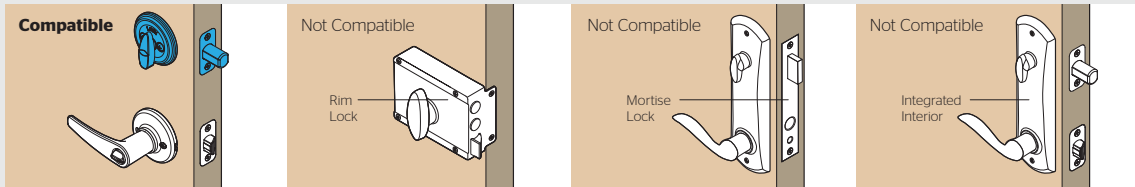
Required tools

Ruler
Existing key
Phillips head screwdriver

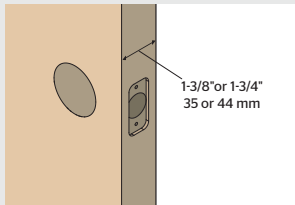
Kwikset
1-800-327-5625
www.kwikset.com

1 Prepare your door

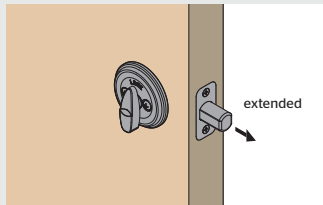
A Make sure your existing deadbolt is compatible. If you have a standard deadbolt mounted separately from the handle below it, it is compatible with Kwikset Convert.



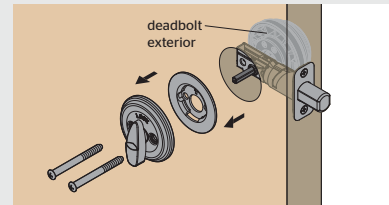
B Measure to confirm that your door is either 1-3/8" or 1-3/4" (35 mm or 44 mm) thick.



C Make sure your door is open and extend your latch bolt.



D Remove all existing deadbolt hardware from the interior side of your door. Keep your deadbolt exterior in place.

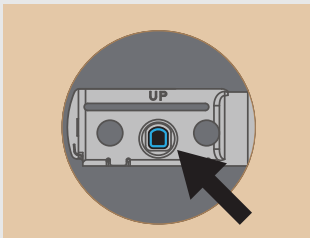


2 Determine the parts needed for your door

Look into the hole in your door. What shape is your torque blade (the part sticking out through the latch)?

For a list of compatible deadbolt models, please see the Kwikset Convert page at www.kwikset.com

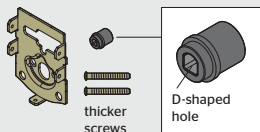
D-shape



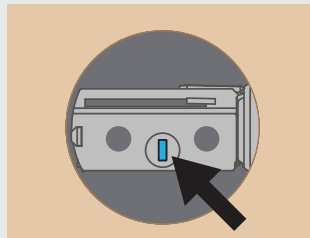
Kwikset and Weiser deadbolts:
Use the black component kit for your door.



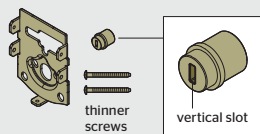
Baldwin deadbolts:
Use the gold component kit for your door. You will need the black adapter with the D-shaped hole and the thicker gold screws.



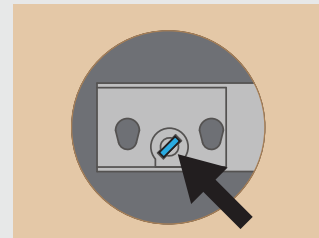
Vertical rectangle



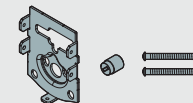
Use the gold component kit for your door. You will need the gold adapter with the vertical slot and the thinner gold screws.



Slanted rectangle

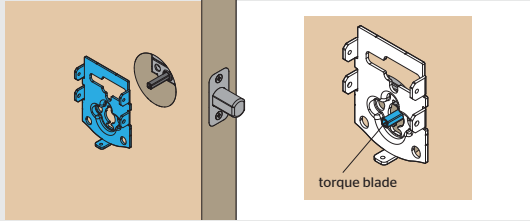


Use the silver component kit for your door.



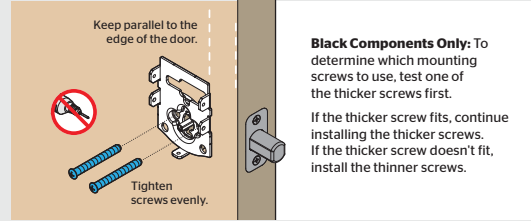
3 Install the mounting plate and test your latch

A Place the mounting plate on the door so that the torque blade inserts through the center hole.

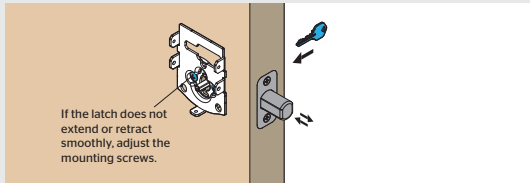


Note: A D-shaped torque blade is shown, but installation is the same for all models.

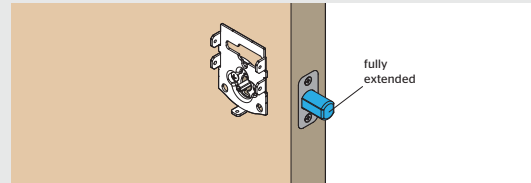
B Secure the mounting plate with the mounting screws.



C Insert your key and test the latch for smooth operation.

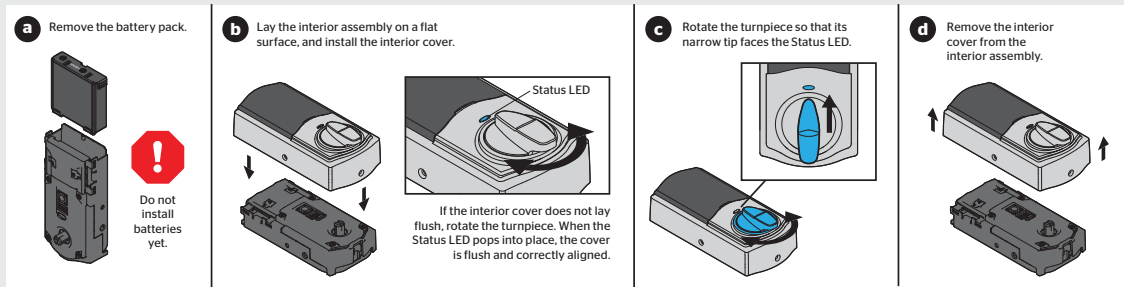


D Remove your key and make sure the bolt is fully extended.



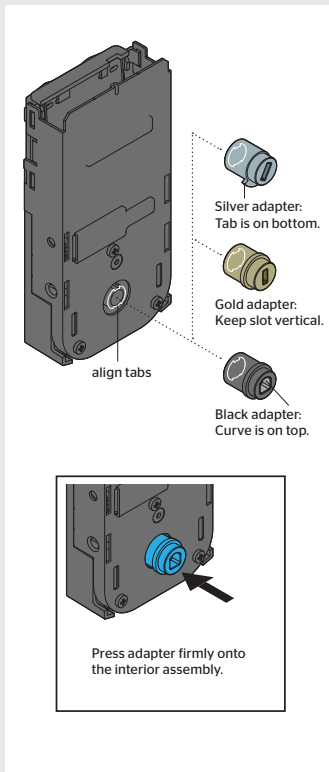
4 Prepare the interior assembly

A Temporarily install the interior cover to correctly orient the turnpiece shaft.

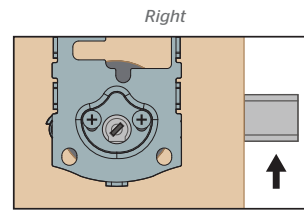
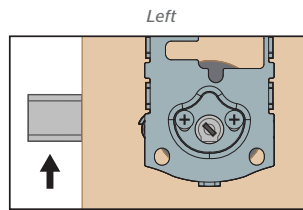


B Install the adapter on the interior assembly.

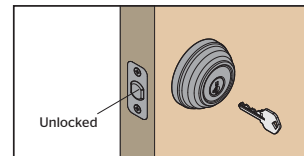
SILVER COMPONENTS ONLY:



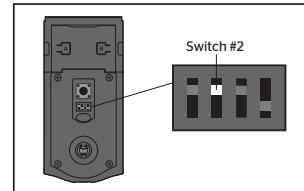
Look at your mounting plate.
Is your latch bolt to the left or right of your mounting plate?



1. Unlock your deadbolt.

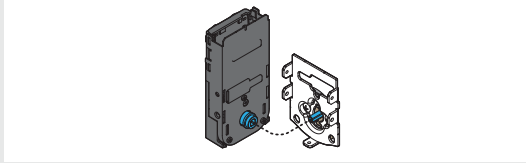


2. On your interior assembly, flip switch #2 to the top position.

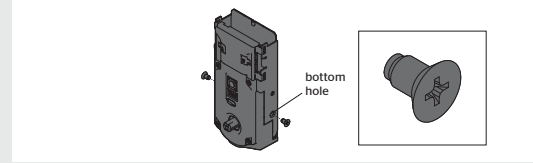


5 Install the interior assembly

A Align the adapter with the torque blade.



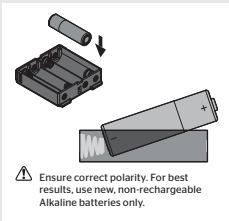
B Secure with two (2) interior assembly screws.



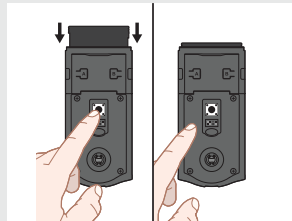
6 Perform the door handing process

This step will teach the lock the orientation of your door and is crucial for lock operation.

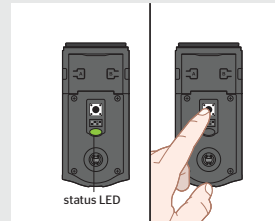
A Install 4 AA batteries in the battery pack.



B Make sure the door is open. Insert the battery pack while PRESSING AND HOLDING the Program button. Release the button when the battery pack is all the way inside the lock interior.



C The Status LED will flash red and green, and the lock will beep. **Press and release the Program button again.** The latch bolt will retract and extend on its own.



D If the latch bolt did not move, remove the battery pack, wait 15 seconds, then attempt the process again.

7 Pair the lock with your smart home system

A Initiate the pairing process at your smart home controller. Refer to your smart home system instructions for more information.

B When prompted by your smart home system to initiate pairing at the lock, press button "A" on the lock interior one time. The red LED will illuminate when pairing mode has been entered.



Please allow time for the controller to pair with the lock.

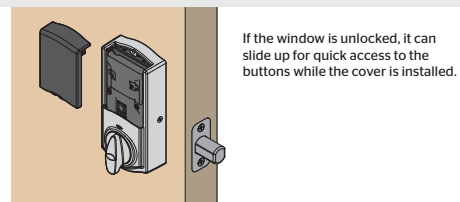
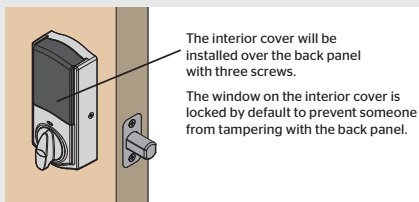
C If the pairing process is successful, re-name the lock in your system (if applicable).

D If pairing is unsuccessful, follow your system's instructions to remove the lock from the controller and any other network, then press button "A" on the lock one time. Perform steps 7A-7C again.

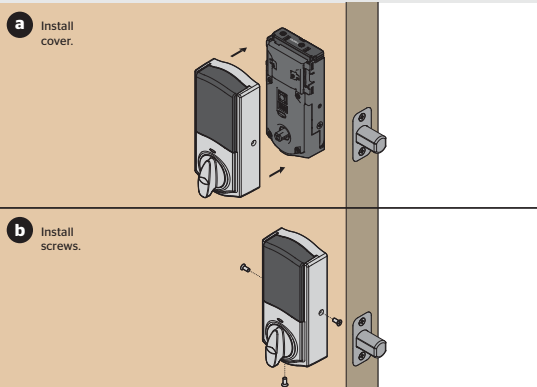
If pairing is still unsuccessful, see "Troubleshooting: Lock won't pair with smart home system" on page 4.

8 Install the interior cover

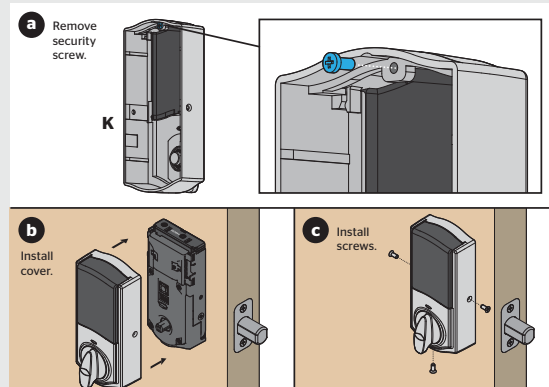
Important Information about the interior cover



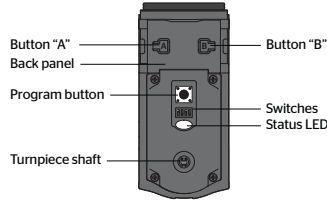
If you want to keep the window locked:



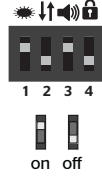
If you want to unlock the window (for quick access to back panel):



Kwikset Convert at a Glance



Switches



1. Status LED

Door lock status LED blinks every 6 seconds. ON position is factory default.

2. Invert

Only used for right-handed doors that have installed silver components.

3. Audio

Beeping sound is heard during programming and normal operation. ON position is factory default.

4. Auto-Lock

Automatically re-locks door 30 seconds after unlocking. OFF position is factory default.

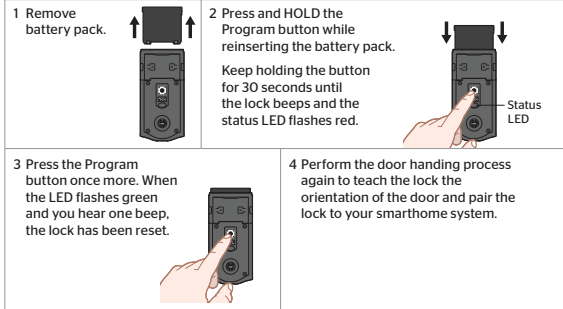
CAUTION: With this feature enabled, it is possible to lock yourself outside if you don't have an enrolled smartphone or standard key with you.

Status LED Notifications



Factory Reset

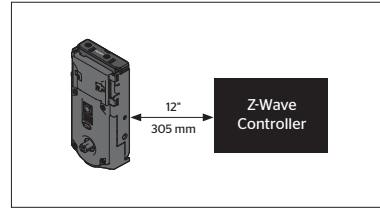
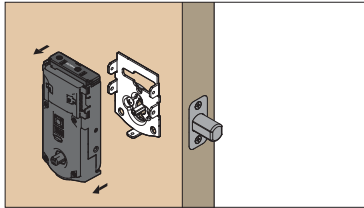
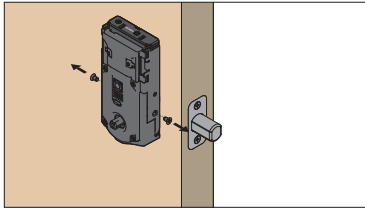
A factory reset will delete all codes associated with the lock.



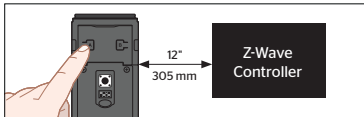
Troubleshooting: Lock won't pair with smart home system

Some Z-wave systems require that the lock be within 12" of the controller during the pairing process. If this is the case, follow the steps below to remove the lock interior from the door to perform the pairing process closer to the controller.

- Remove the small screws that secure the interior assembly to the mounting plate.
- Remove the interior assembly from the door.
- Hold the interior assembly a maximum of 12" (305 mm) from your smart home controller for the rest of this process.



- Initiate the pairing process at your smart home controller. Refer to your smart home system instructions for more information.
- When prompted by your smart home system to initiate pairing at the lock, press button "A" on the lock interior one time. The red LED will illuminate when pairing mode has been entered.
- When pairing is complete, re-name the lock in your system (if applicable). Then, reinstall the lock interior on the interior assembly.



The lock and controller must remain stationary for at least 60 seconds during the pairing process.

Network Information

Removing the lock from the network

Follow your smart home system's instructions to remove the lock from the network. When prompted by the system, press button "A" on the lock interior once.



Z-Wave System Notes

This product is a security enabled Z-wave Plus product and must be used with a Security Enabled Z-Wave controller to be fully utilized. Z-Wave is a "Wireless mesh network," and results may vary based on building construction and communication path, with 35 feet+ being typical installed distance from smart home controller. It may be necessary to install additional Z-Wave beaming capable devices that can serve as repeaters to enhance the communication path between the lock and controller for a more robust Z-Wave network.

To assure interoperability, each Z-Wave product must pass a stringent conformance test to assure that it meets the Z-Wave standard for complete compliance with all other devices and controls. The Z-Wave identity mark assures consumers, integrators, dealers and manufacturers that their products will reliably perform with any other Z-Wave device. And, regardless of the vendor, always powered nodes may act as a repeater for Kwikset/Weiser/Baldwin products.

Z-Wave Configuration and Association Parameters are available on the Kwikset Convert page at www.kwikset.com.

Important Safeguards

- Read all instructions in their entirety.
- Familiarize yourself with all warning and caution statements.
- Remind all family members of safety precautions.
- Always have access to your lock's standard key.
- If using the Auto-Lock feature, make sure to have your smartphone or standard key with you to prevent locking yourself out.
- Replace low batteries immediately.

CAUTION: Prevent unauthorized entry. Restrict access to your lock's back panel and routinely check your settings to ensure they have not been altered without your knowledge.

WARNING: This Manufacturer advises that no lock can provide complete security by itself. This lock may be defeated by forcible or technical means, or evaded by entry elsewhere on the property. No lock can substitute for caution, awareness of your environment, and common sense. Builder's hardware is available in multiple performance grades to suit the application. In order to enhance security and reduce risk, you should consult a qualified locksmith or other security professional.