

kēvo™

USER GUIDE • GUÍA DEL USUARIO • GUIDE D'UTILISATION

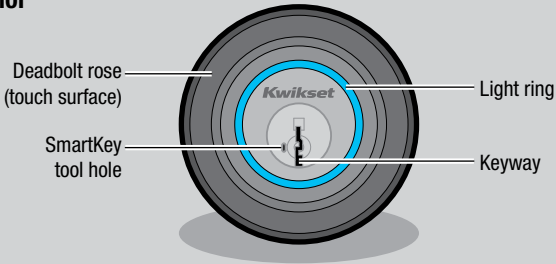


CONTENTS

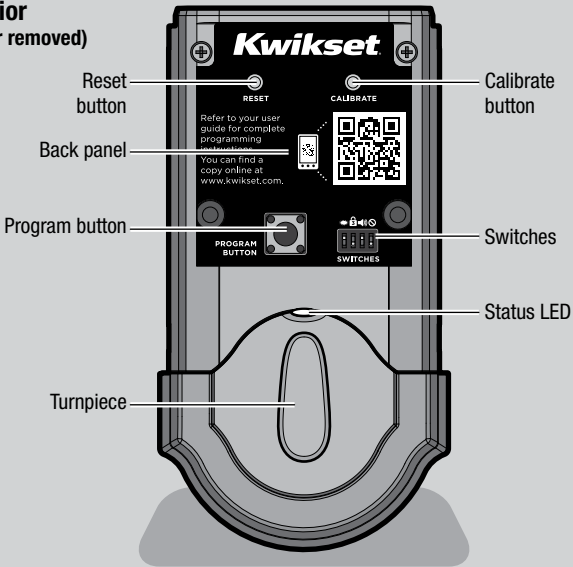
Kevo at a Glance	4
Kevo Overview	5
System Requirements for Smart Devices	6
Getting Started	6
Install the Kevo Lock	6
Download the Kevo Mobile App	6
Programming Instructions	7
Smart Devices	7
eKeys	8
Fobs	9
Resetting Your Kevo System	11
Normal Operation	12
Unlocking the Door	12
Locking the Door	13
Error Notifications	14
Audio/Visual Feedback	16
Battery Replacement	18
Fob	18
Deadbolt	19
Troubleshooting	20
System Updates	20
Regulatory Compliance	21
FCC	21
Industry Canada	21
Tech Support	22

KEVO AT A GLANCE

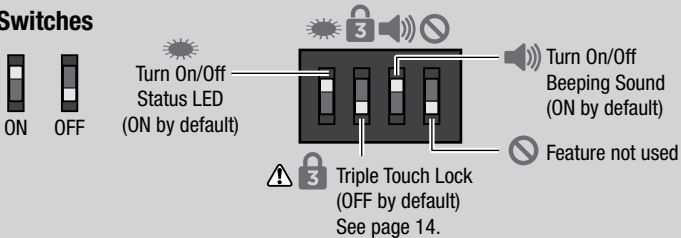
Exterior



Interior (cover removed)



Switches

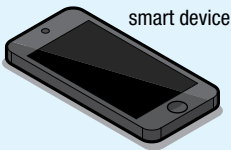


KEVO OVERVIEW

The Kevo lock communicates via Bluetooth wireless technology with your smart device (phone, tablet or other mobile internet-connected device) or Kevo fob, which can stay in your pocket or purse during lock operation. When you touch the Kevo lock from the outside of the door, it recognizes your Kevo enabled smart device or Kevo fob and locks or unlocks the door.

You may choose to use only Kevo fobs, only smart devices, or a mix of both in your Kevo system. In order for your smart device to connect to the lock, you will need to download the Kevo mobile app. The app acts as your virtual key and runs in the background without you even having to remove it from your pocket or purse to unlock the door. You can grant family and friends access to your Kevo lock by giving them Kevo fobs or sending eKeys to their smart devices. Kevo eKeys can be sent or disabled at any time through the Kevo app or web portal.

The Kevo lock can always be locked and unlocked with a standard key as needed. You can use the SmartKey tool to rekey your lock so it works with your existing Kwikset key. See the SmartKey rekey instructions for more information.



SYSTEM REQUIREMENTS FOR SMART DEVICES



A Kevo compatible smart device must have Bluetooth Smart Ready/ Bluetooth 4.0, and the Kevo app specific to the device must be installed. Find out if your device is compatible by consulting our website: www.kwikset.com/kevo/devices

If your device is compatible, the QR code above will transfer you directly to your device's app store so you can download the Kevo app. If your device is not compatible, you can still use the Kevo fob to operate your lock. See page 9.

When sending eKeys, make sure your eKey receivers also have Kevo compatible Bluetooth Smart Ready / Bluetooth 4.0 smart devices. They will be prompted to download the Kevo app once they receive an eKey for the first time.

GETTING STARTED

Install the Kevo Lock



Before programming your Kevo system, make sure to install the lock on your door. See the Kevo Installation Guide for complete instructions or view the installation video at www.kwikset.com/kevo/setup

Download the Kevo Mobile App



If you are using smart devices in your system, download the Kevo app specific to your device to get started. You can find the link to the app at www.kwikset.com/kevo/app

Web Portal

You can also configure your account settings through the Kevo web portal: www.kwiksetkevo.com

Smart Devices

Note: Throughout this manual, smart devices (phones, tablets and mobile internet-connected devices) will be referred to as “smartphones” or “phones.”

All smartphones will be configured through the Kevo app. The first phone you setup with the lock will become the Owner of the lock. You can send eKeys to friends and family with compatible smartphones and use the app to decide who receives Admin rights in your system.

Like an Owner, an Admin user can send, disable and delete eKeys and enroll Kevo fobs. An Admin user can delete other Admins, but they cannot delete the Owner or the lock from the system. All other users can lock and unlock the Kevo lock, but they cannot manage eKeys.

Configuring the Kevo Lock's First Smartphone

Once the Kevo app is installed on your phone, follow the instructions inside the app to create an account and set up your phone to work with the lock. Your phone will become the Owner of the lock.


Calibrating Your Phone

When you set up your lock's first phone, the app will prompt you to calibrate your phone. The calibration process will help the Kevo lock learn where you normally carry your phone while locking and unlocking the door. If you experience any issues while trying to lock or unlock the door in the future, perform the calibration process again from within the app.

When the light ring flashes magenta while you're trying to lock or unlock the door, the Kevo lock senses your phone is out of activation range. If this happens frequently, this is an indication that you should perform the calibration process again.

Note: Activation range refers to the area close to the Kevo lock in which the lock can detect your device and respond to touch. The calibration process can help fine tune this range.

Note: The calibration process must be performed while you are standing next to the Kevo lock.

 **WARNING:** Fine tuning your Kevo lock's activation range is an important security measure, especially if part of your home extends into the activation range. If you keep your phone near the Kevo lock, test to ensure your device is not being detected within activation range, and perform the calibration process to shorten this range.

Disabling Your Lost or Stolen Smartphone

If your phone is lost or stolen, use the Kevo web portal to delete or disable your old phone: www.kwiksetkevo.com

Transferring Your Information to a New Phone

When you get a new phone, download the Kevo app and sign in. All of your settings will be transferred to your new phone and deleted from your former phone.

eKeys

When you set up your phone to work with the lock, an eKey is automatically added to your account so you can send it to a friend or family member with a compatible smartphone. Owners and Admin users can purchase additional eKeys as needed through the app.

Sending an eKey

To send an eKey, navigate to the “Send eKey” section of the app and follow the prompts.

Once someone receives an eKey, they will see the eKey listed as Pending in the Kevo app. The eKey receiver must Accept the eKey inside the app.

Calibrating an eKey Receiver’s Smartphone

If an eKey receiver is a frequent user of your lock, it is recommended that they run the app’s calibration process to help the Kevo lock better communicate with their phone. This will not affect the calibration settings of other users in the system.

When the light ring flashes magenta while an eKey user is trying to lock or unlock the door, the Kevo lock senses their phone is out of activation range. If this happens frequently, this is an indication that they should perform the calibration process again from within the Kevo app.

Disabling an eKey

You can disable an eKey from an individual user within the app. Disabling an eKey will temporarily disallow access to the Kevo lock until you re-enable it.

Deleting an eKey

Deleting a user’s eKey will permanently remove that eKey from your Kevo system.

Note: If you wish to add a user back after you delete their eKey, you will need to purchase a new eKey inside the app.

Fobs

The Kevo fob that came with your Kevo lock is already enrolled in the lock, but it is recommended that you perform the calibration process below.

Note: You can purchase additional Kevo fobs as needed.

Note: In order to have a mix of smartphones and fobs in your Kevo system, a Kevo compatible smartphone must be designated as the Owner of the lock. See page 7.

Kevo Fob Calibration

The calibration process will help the Kevo lock learn where you normally carry your fob while locking and unlocking the door. If you experience any issues while trying to lock or unlock the door in the future, perform this calibration process again.

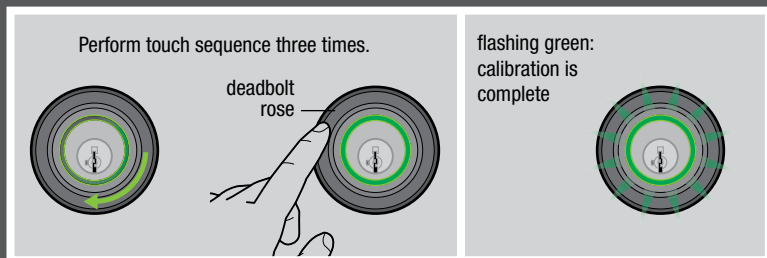
⚠ WARNING: Fine tuning your Kevo lock's activation range is an important security measure, especially if part of your home extends into the activation range. If you keep your fob near the Kevo lock, test to ensure your device is not being detected within activation range, and perform the calibration process to shorten this range.

Tip: It is recommended that this procedure is performed with each fob in your system. This will not affect the calibration settings of other users in the system.

1. To put the lock in calibration mode, take the battery cover off the lock. Press the Calibrate button once, then hold your fob close against the back panel until you hear one beep.
2. Close the door, stand outside in front of the Kevo lock, and place your fob where you would normally keep it (pocket, purse, bag, etc.).

The light ring will spin green. When it turns solid green, touch the deadbolt rose. Repeat this touch sequence two more times.

After the third touch, the light ring will flash green. Your fob is now calibrated.



The following sections show you how to enroll and remove Kevo fobs in a fob-only system or in a fob-and-phone system.

Note: A single fob can be enrolled in multiple Kevo locks.

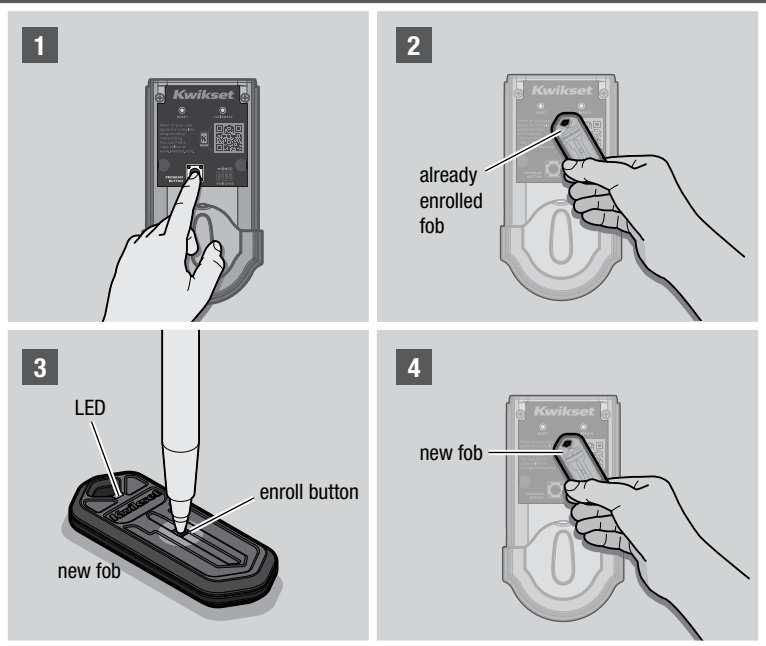
Note: The fob that came with your Kevo lock is already enrolled in the lock.

Fob-Only System

enrolling an additional fob

1. Push the Program button on the back panel.
2. Hold an already enrolled fob close against the back panel until you hear one beep.
3. Use a ballpoint pen to press the enroll button on the new Kevo fob. The fob's LED will begin to blink green.
4. Hold the new fob close against the back panel.

Once the Kevo lock beeps twice and the fob's LED turns solid green, the fob has enrolled successfully. You may now perform the Kevo fob calibration process on page 9.



removing a fob

In order to remove a Kevo fob from a fob-only system, you will need to reset your lock to factory default settings. Press and hold the Reset button on the back panel for 10 seconds until the lock beeps. All fobs associated with the lock will be deleted from memory.

Note: If you lose a fob from a fob-only system, you will need to reset the lock to delete the fob from memory.

enrolling the first fob after a factory reset

1. Push the Program button on the back panel.
2. Press the enroll button on the fob.
3. Hold the fob close against the back panel.

Once the Kevo lock beeps twice and the fob's LED turns solid green, the fob has enrolled successfully. You may now perform the Kevo fob calibration process on page 9.

Fob-and-Phone System

enrolling a fob

In a fob-and-phone system, you can enroll an additional Kevo fob with the help of the Kevo app. Navigate to the "Enroll a Fob" section of the app, and follow the prompts to enroll your new fob. Once fob enrollment is complete, you may perform the Kevo fob calibration process on page 9.

removing a fob

If you need to remove a fob from your system, select the desired fob from within the Kevo app and follow the app's instructions to remove it.

Note: You must be within Bluetooth range of your lock to delete a fob from your Kevo system through the app.

Resetting Your Kevo System

If you wish to restore your Kevo lock to factory default settings and delete all smartphones and Kevo fobs from memory, press and hold the Reset button on the back panel for 10 seconds until the lock beeps.

Note: Resetting your Kevo lock will delete all eKeys associated with the lock; however, you will be able to send eKeys at no charge to anyone who previously had an active eKey at the time of reset.

NORMAL OPERATION

Unlocking the Door

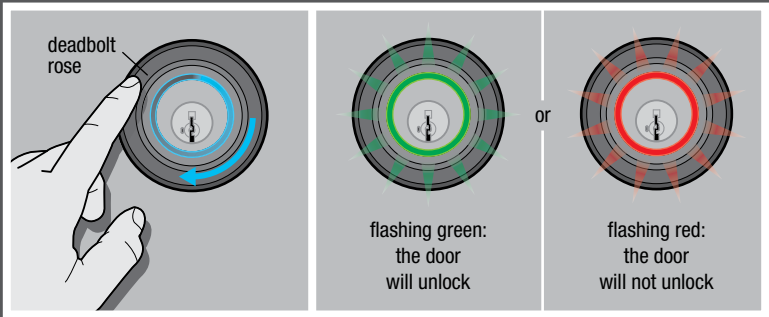
From the Outside

To unlock the Kevo lock (while your smartphone or fob is in your pocket or purse), hold one finger against the deadbolt rose until the light ring spins blue. The light ring will flash green twice and you will hear two beeps. The door will unlock.

Tip: The deadbolt rose is the entire metallic guard extending from the light ring to the door. You can touch the rose in any location.

If someone with a Kevo device that is not authorized in your system touches the rose, the light ring will spin blue, then flash red. The door will not unlock.

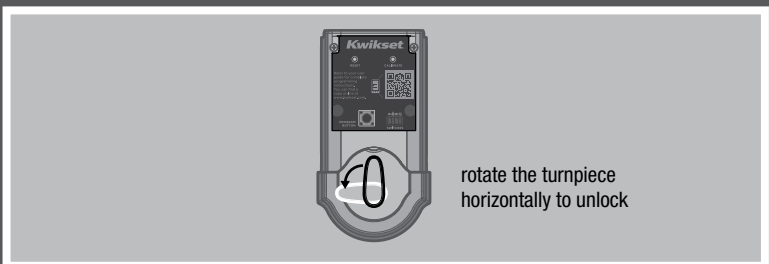
If someone without a Kevo device touches the rose, the light ring will just spin blue. The door will not unlock.



Note: A standard key can always be used to unlock the door as needed.

From the Inside

The Kevo lock can be unlocked from the inside by simply rotating the turnpiece.



⚠ WARNING: If part of your home extends into the Kevo lock's activation range, do not keep your smartphone or fob in this area. If kept in this area, the Kevo lock's antennas may detect your device on the outside of the door, allowing anyone to open your lock by touch. If you plan to keep your device near your lock, test to ensure it is not being detected within activation range. Performing the calibration process on your fob or phone can help fine tune the activation range.

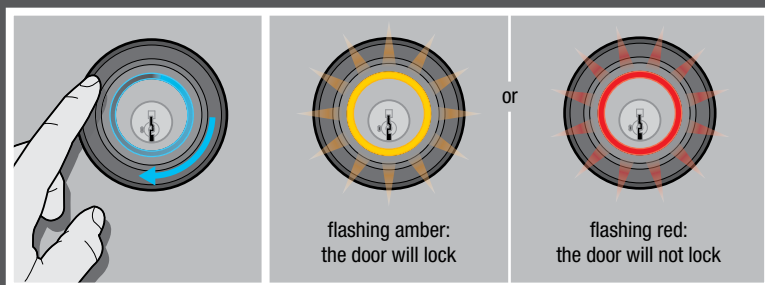
Locking the Door

From the Outside

To lock the door (while your smartphone or fob is in your pocket or purse), hold one finger against the deadbolt rose until the light ring spins blue. The light ring will flash amber and you will hear one beep. The door will lock.

If someone with a Kevo device that is not authorized in your system touches the rose, the light ring will spin blue, then flash red. The door will not lock.

If someone without a Kevo device touches the rose, the light ring will just spin blue. The door will not lock.



Note: a standard key can always be used to lock the door as needed.

From the Inside

The Kevo lock can be locked from the inside by simply rotating the turnpiece.

