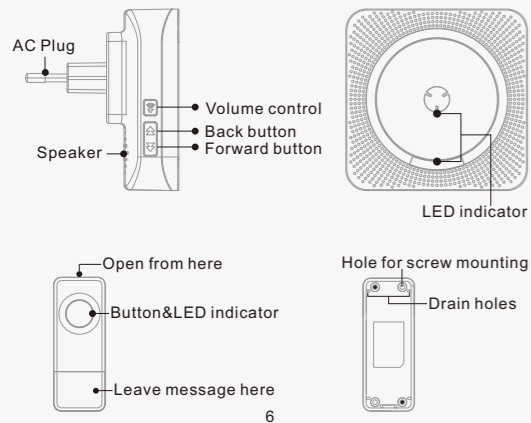


6. Transmitter battery replacement

Remove the back of the case by pushing in the tab on the transmitter button with a small screwdriver, the battery is under the PCB. remove screws from PCB to change battery and then screw up the PCB to front case, finally put back the back case.



6

Installation Methods

Important: before installation, please test the doorbell range first.

For Receiver: Just plug receiver into standard outlet in room, then it will work.

For Transmitter: Please first test if the receiver could response the transmitter.

Transmitter Installation Method 1: Double-sided adhesive tap (Preferred install method)

1. After ensuring the right mounting position, please clean the flat area where you intend to install transmitter.

2. Tear off one side of the double-sided adhesive tap and stick it to the underside of transmitter; tear off the other side and put transmitter onto wall, then press for 10 seconds.

Note: please note that the double-sided adhesive tap will have poor adhesion, if put on dirty or uneven surface. sunlight or rain will affect the adhesion and may cause the transmitter to come off

Transmitter Installation Method 2: Screw/Anchors (Optional install method)

7

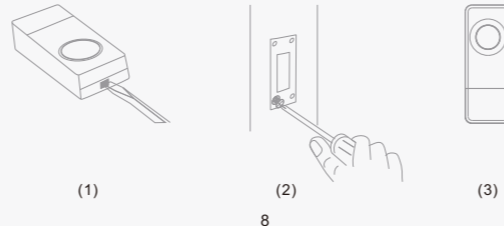
Please prepare an electric drill, Phillips screwdriver and slotted screwdriver before installation.

1. Use the mini screwdriver in the package to open back cover of transmitter. Then find the two reserved wall mounting holes on the back cover (see Transmitter Structure Diagram)

2. Attach the back cover to wall and make two marks on the place of two mounting holes.

3. Drill two holes on the marked places, then insert 2 expansion bolts provided in the package.

4. Finally, screw up back cover and put back the front case.



(1)

(2)

(3)

8

Troubleshooting

1. The receiver doesn't sound

- Check the doorbell button battery, replace it if necessary.
- The plug of receiver is loose.
- Check the doorbell button battery, replace it if necessary.
- The receiver could be out of range of the doorbell button.
- The receiver may not have paired with the doorbell button.
- Check that the volume control is not at the minimum setting.

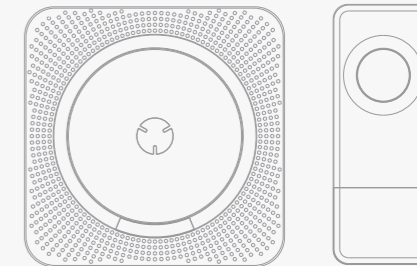
2. Operating range is reduced

- Metal structures, including uPVC door frames can reduce the range of the product. Avoid mounting the push or chime on or near metal structures.
- Other equipment can cause radio interference that affects your
- Walls and ceilings will reduce the range.
- Weak batteries will reduce range. Replace every 12-18 months.

9

WIRELESS DOORBELL

User Manual



Please carefully read this user manual before usage and installation

Brief Instruction

Thank you for purchasing our Wireless Doorbell. It's an ideal unit for easily installing a doorbell without the hassle of wiring. Simply plug the receiver to an AC outlet and mount the transmitter where needed and you are ready to go! The doorbell features 52 ringtones and four levels of volume to suit your needs and can reach a distance of up to 1000FT when there are no obstructions.

Features

- Modern and stylish design
- 52 selectable ringtones
- 4-level adjustable volume
- 1000 feet operation range (in the open air)
- Easy to install and use
- Easy to add additional transmitters or receivers
- IP55 waterproof transmitter
- Low power consumption

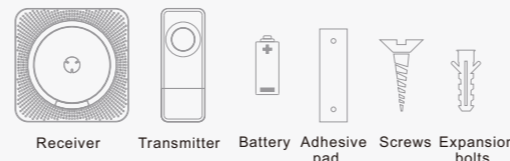
1

Specifications

Working voltage of plug-in receiver:	AC 110V (US)/AC 220V (EU, UK, AU)
Battery in transmitter:	12V 23A alkaline battery
Power consumption of transmitter	< 10mW
Wireless range:	1000 feet (in the open air)
Audible range	300 feet
Selectable ringtones:	52
Volume range:	25~110 dB, 4 levels
Expandable (Yes or No):	Yes
Working frequency:	433.92 MHz±280KHz
Working temperature:	-30°C~70°C

2

Package contents



Important: the battery for transmitter has been installed, please pull out the insulating strip before using, but don't too hard, which may move the battery away from its normal position.

What You Should Know Before Installation

Doorbell's radio signal can be effected by metal, walls, concretes and interference signal from other electronics. Generally the operating range can reach up to 1000 feet in the open air and non-interference environment, and 100~500 feet with metal security doors and walls.

1. Test the operating range before installation to make sure the position where you want to mount the transmitters is within the coverage of receiver.

3

2. Set your favorite ringtone (different or same ringtones for transmitters) before installation, see "Operating Instructions". **Doorbells have been paired and set to default ringtone "Ding-dong" before leaving factory.**

3. Do not mount the doorbell near to large metallic surfaces which may affect the RF signals. If operating range is short, please change the location of installation.

4. Please plug receiver into outlet far away from induction cookers, televisions, horns or other electronic appliance which produce magnetic field or interfering signals.

5. Operating range will become shorter and blue indicator turns less light if battery in transmitter is at low power status. Battery type is 12V 23A.

Operating Instructions

1. Sound volume control: press the volume control button on the receiver. This switch toggles between **High** and **Low** volume.

2. Set Ringtone: There are 52 ringtones to choose from. (1) Press Forward Button or Back Button to choose your favorite ringtone, the receiver playing is the ringtone selected.

4

(2) **Please follow the pairing steps (2)-(3) below to sync the new ringtone.** the new ringtone will be set for the most recently synced transmitter.
(3) **The ringtone can be set different for transmitters.**

3. Pairing a transmitter to receiver:

(1) Please select your favorite ringtone before pairing.
(2) Long press the volume control button for 5 seconds until a Ding-dong is heard and the LED indicator starts flashing to enter into pairing mode.
(3) Press the transmitter button to send a signal to receiver, when the pairing (ringtone sync) is successful, the receiver will play the selected ringtone automatically.

Remarks:

(1) Pairing mode will quit automatically after pairing is completed.
(2) Pairing mode will last for 5 seconds only.

4. Two or more transmitters pairing:

The pairing mode is available for a transmitter only each time. For two or more transmitters, please follow the pairing steps (1)-(3) once again to get transmitters paired one by one.

5. Reset: Press forward button for 5 seconds to reset receivers to default. When receiver sounds 'Ding Dong' with LED flashing that means reset succeeds, setting is back to default: It comes back to the 1st music, no transmitter is paired with receiver.

5

FCC Statement

This equipment has been tested and found to comply with the limits for a Class B digital device, pursuant to Part 15 of the FCC Rules. These limits are designed to provide reasonable protection against harmful interference in a residential installation. This equipment generates uses and can radiate radio frequency energy and, if not installed and used in accordance with the instructions, may cause harmful interference to radio communications. However, there is no guarantee that interference will not occur in a particular installation. If this equipment does cause harmful interference to radio or television reception, which can be determined by turning the equipment off and on, the user is encouraged to try to correct the interference by one or more of the following measures:

- Reorient or relocate the receiving antenna.
- Increase the separation between the equipment and receiver.
- Connect the equipment into an outlet on a circuit different from that to which the receiver is connected.
- Consult the dealer or an experienced radio/TV technician for help.

This device complies with part 15 of the FCC Rules. Operation is subject to the following two conditions:(1) This device may not cause harmful interference, and (2) this device must accept any interference received, including interference that may cause undesired operation.

Changes or modifications not expressly approved by the party responsible for compliance could void the user's authority to operate the equipment.