

Welcome to Spigen World!

Something You Want!

Check out this helpful manual for tips and tricks on getting the most out of this product!



User Manual

About Spigen

The Spigen Brand
As a leading mobile accessories brand, Spigen strives to make the best products that fit your lifestyle.

www.spigen.com

Quick Installation Guide



Android



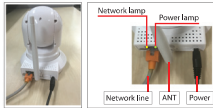
iOS

Here are some tips and tricks on how to use!

Installation

1. Hardware installation

First, connect the ethernet cable to camera, other side to the router, connected antenna, then connect the power adapter. Please make sure that the power indicator is on(green) and the network light is flashing(glow).



CAUTION
Please use the power correctly, so as not to damage the camera.

2. Software installation

Make sure your phone is connected with WIFI or 3G Internet, then go to Google Play/App Store searching "SPIGEN CAM" for downloading. Also you can scan QR Code to download it.



iOS

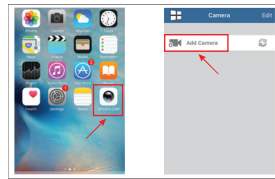


Android

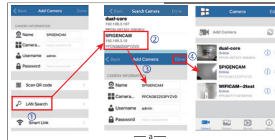
App Using

1. Add camera

After the installation, the desktop will appear the following software icon, run the program, touch Add Camera.



a. LAN search to add the camera

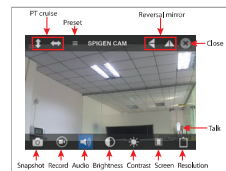


b. Scan the QR code
c. Manually input Name, Camera ID, User and Password.

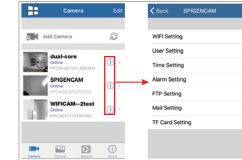


2. Watch the video

Click the camera on the list, enter the browsing interface, watch the video in real time. Action button interface as shown in the figure below

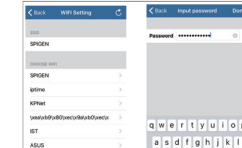


Click on the round label enter the camera setting interface



1. WIFI setting

Click WiFi Setting, search the wireless signal, choose your routing, enter the password, click "Done", camera prompt to restart, then unplug the Ethernet cable.



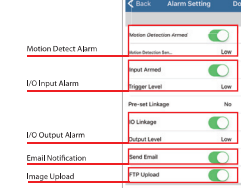
2. Using setting

Modify the equipment user and password, after finished, log back in. Administrator: AllPermissions
Visitor: can only watch



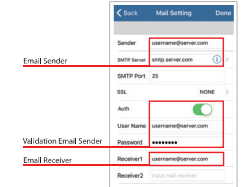
3. Alarm setting

There are two alarm mode: Motion Detection Alarm and I/O Alarm. Alarm upload pictures: This function is captured images uploaded to the FTP server



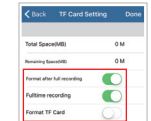
4. Mail setting

Click to enter Email Setting interface. Camera automatically snapping pictures sent to the specified email after alarm.



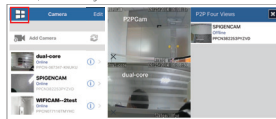
5. TF setting

The TF card must be formatting when you first use it. Check record coverage and timer recording. For safety, make sure to power off the camera whenever you insert or pull out the TF card.



More Window Video

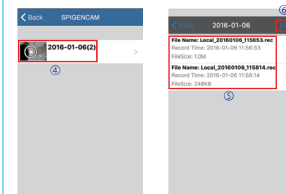
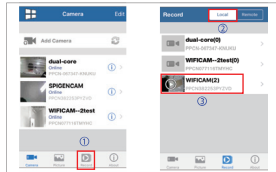
Click on the top left corner graphic to enter more window video preview interface. Click on the right side camera to watch the real-time video.



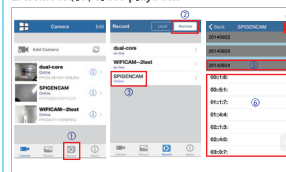
Record Playback

Click "Videos" to watch the record, including local remote video (in TF card).

1. Local(phone) video playback

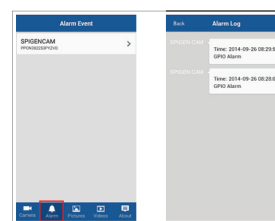


2. Remote (TF) video playback



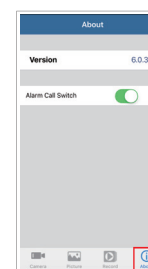
Instruction

Android client contains alarm log function, and the rest of the function remains the same as the iOS.



About

Check the software version.



FCC Warning Statement

Changes or modifications not expressly approved by the party responsible for compliance could void the user's authority to operate the equipment.

This equipment has been tested and found to comply with the limits for a Class B digital device, pursuant to Part 15 of the FCC Rules. These limits are designed to provide reasonable protection against harmful interference in a residential installation. This equipment generates uses and can radiate radio frequency energy and, if not installed and used in accordance with the instructions, may cause harmful interference to radio communications. However, there is no guarantee that interference will not occur in a particular installation. If this equipment does cause harmful interference to radio or television reception, which can be determined by turning the interference off and on, the user is encouraged to try to correct the interference by one or more of the following measures:
 — Reorient or relocate the receiving antenna.
 — Increase the separation between the equipment and receiver.
 — Connect the equipment into an outlet on a circuit different from that to which the receiver is connected.
 — Consult the dealer or an experienced radio/TV technician for help.
 FCC Radiation Exposure Statement
 The antenna used for this transmitter must be installed to provide a separation distance of at least 20 cm from all persons and must not be co-located for operating in conjunction with any other antenna or transmitter.

4MN00172-1

Thank you for your purchase!

If you have any issues or concerns, let us know at spigen.desk.com

Happy with Your Purchase?

GOOD!

★★★★★

Share with others how much you like our product!

Explore More Products

amazon.com

google.com

ebay.com

