

WIRELESS CHARGER

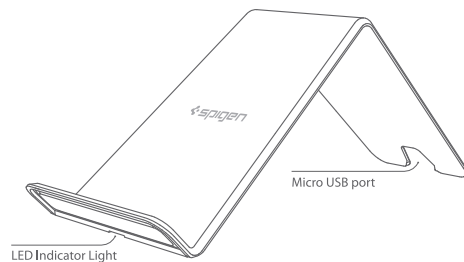
F300W

User Manual
FCC ID: 2AFKN-F300W



Using the F300W Wireless Charger

Thanks for choosing Spigen!
This is a smartphone wireless charger that allows you to easily enjoy your digital products. Please kindly read the user manual before use and refer back to it when needed.

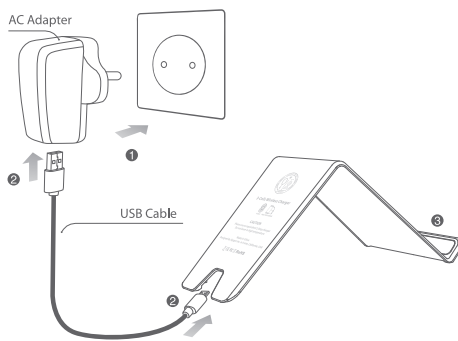


Specification

Input : DC 5V, 2A	Charging distance : 7mm(Max)
Frequency : 110~205KHz	Conversion : ≥70%
Size : 192x84x19(mm)	NW : 280g

Connect to an AC Adapter

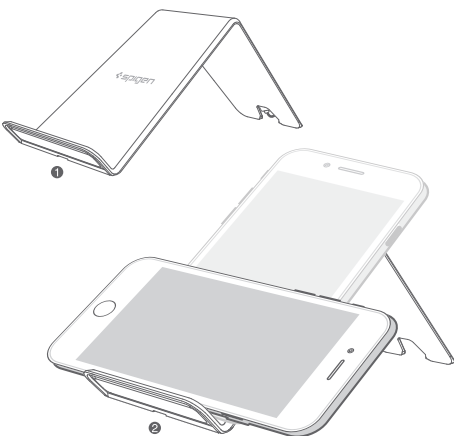
AC Adapter is not included.



- 1 Plug the AC adapter into a power outlet.
- 2 Connect the USB 2.0 interface to the AC adaptor and the Micro USB to the charger.
- 3 Standby LED light will turn on.

▲ Integrated smart chips in charger allow for long standby times.

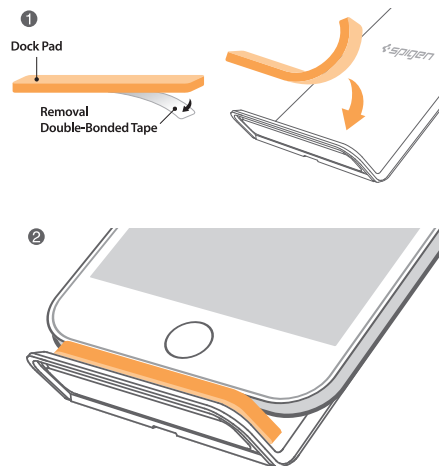
Charging mode



- 1 Once plugged in, the LED indicator light will turn red on standby mode.
- 2 The indicator light will turn blue when the device is properly placed on the charger and is charging.

Safety Precautions

Adjusting the Dock Position



- Attach the included dock pad to adjust the charging position of your phone.

FCC Warning

This device complies with part 15 of the FCC Rules. Operation is subject to the following two conditions: (1) this device may not cause harmful interference, and (2) this device must accept any interference received, including interference that may cause undesired operation.

Any changes or modifications not expressly approved by the party responsible for compliance could void the user's authority to operate the equipment.

NOTE: This equipment has been tested and found to comply with the limits for a Class B digital device, pursuant to Part 15 of the FCC Rules. These limits are designed to provide reasonable protection against harmful interference in a residential installation. This equipment generates, uses and can radiate radio frequency energy and, if not installed and used in accordance with the instructions, may cause harmful interference to radio communications. However, there is no guarantee that interference will not occur in a particular installation.

If this equipment does cause harmful interference to radio or television reception, which can be determined by turning the equipment off and on, the user is encouraged to try to correct the interference by one or more of the following measures:

- Reorient or relocate the receiving antenna.
- Increase the separation between the equipment and receiver.
- Connect the equipment into an outlet on a circuit different from that to which the receiver is connected.
- Consult the dealer or an experienced radio/TV technician for help.

To maintain compliance with FCC's RF Exposure guidelines, This equipment should be installed and operated with minimum distance between 20cm the radiator your body: Use only the supplied antenna.

Safety Precautions

1. Do not apply excessive pressure onto the pad.
2. Do not disassemble or expose to water.
3. Do not use in extreme heat, humidity, or corrosive environments.
4. Avoid contact of wireless charger and magnetic or chip cards (IDs, credit cards, etc.) to prevent magnetic failure.
5. Keep the wireless charger at least 20cm (7.87 inches) away from implantable medical devices (pacemakers, implantable cochlear, etc) to avoid potential interference of these devices.
6. Keep out of reach of children to avoid accidents and ensure safety.
7. Please make sure to charge with a DC 5V 2A AC adapter when using an AC adapter.

All sketches shown are visual guidelines and examples on how to operate the wireless charger. Your setup may vary.

<http://www.spigen.com>

Thank you for your purchase!

If you have any issues or concerns, let us know at spigen.desk.com

Happy with Your Purchase?

GOOD! ★★★★★

Share with others how much you like our product!



Explore More Products

amazon.com

google.com

ebay.com



CUTTING LINE
FOLDING LINE

■ K ■ Pantone 1505M

Double-sided Printing