

# ROLLTS DOMINO E1 User guide

## Checklist before using the device

### Federal Communications Commission statement

**NOTE :** Change or modification not expressly approved by the party responsible for Compliance could void the user's authority to operate the equipment.

**NOTE :** This equipment has been tested and found to comply with the limits for a Class B digital device, pursuant to Part 15 of the FCC Rules. These limits are designed to provide reasonable protection against harmful interference in a residential installation.

This equipment generates, uses and can radiate radio frequency energy and, if not installed and used in accordance with the instructions, may cause harmful interference to radio communications. However, there is no guarantee that interference will not occur in a particular installation.

If this equipment does cause harmful interference to radio or television reception which can be determined by turning the equipment off and on, the user is encouraged to try to correct the interference by one or more of the following measures.

- Reorient or relocate the receiving antenna.
- Increase the separation between the equipment and receiver.
- Connect the equipment into an outlet on a circuit different from that to which the receiver is connected.
- Consult the dealer or an experienced radio, TV technical for help.
- Only shielded interface cable should be used.

Finally, any changes or modifications to the equipment by the user not expressly approved by the grantee or manufacturer could void the user's authority to operate such equipment.

**NOTE :** Exposure to Radio Frequency Radiation. Antenna shall be mounted in such a manner to minimize the potential for human contact during normal operation.

The antenna should not be contacted during operation to avoid the possibility of exceeding the FCC radio frequency exposure limit.

**NOTE :** This device complies with part 15 of the FCC Rules.

**NOTE :** Operation is subject to the following two Conditions :

- (1) This device may not cause harmful interference, and
- (2) This device must accept any interference received, including interference that may cause undesired operation. For compliance could void the user's authority to operate the equipment.

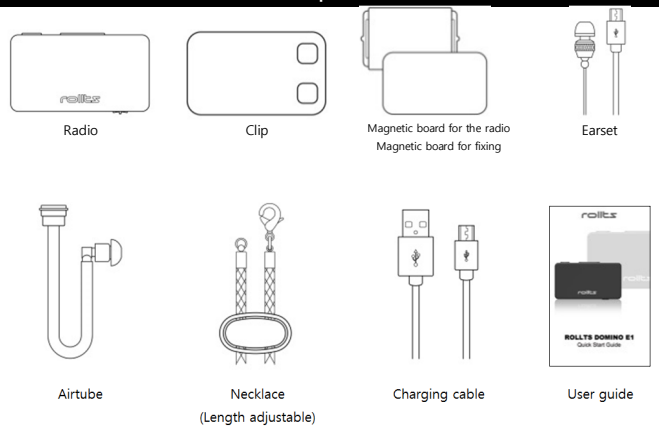
**NOTE :** This appliance and its antenna must not be co-located or operation in conjunction with any other antenna or transmitter.

### Industry Canada statement

This device complies with Industry Canada license-exempt RSS standard(s). Operation is subject to the following two Conditions: (1) this device may not cause interference, and (2) this device must accept any interference, including interference that may cause undesired operation of the device."

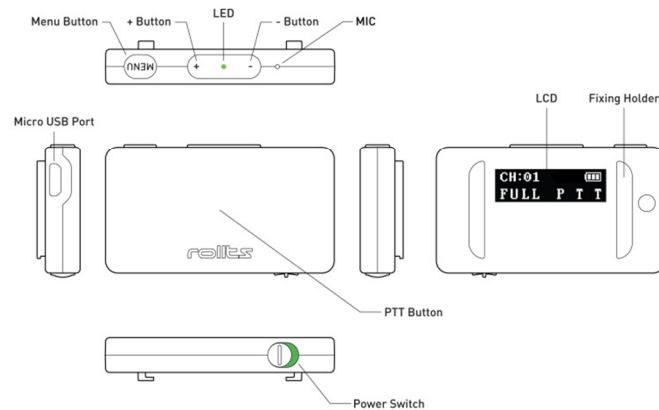
Le présent appareil est conforme aux CNR d'Industrie Canada applicables aux appareils radio exempts de licence. L'exploitation est autorisée aux deux conditions suivantes: (1) l'appareil ne doit pas produire de brouillage, et (2) l'utilisateur de l'appareil doit accepter tout brouillage radioélectrique subi, même si le brouillage est susceptible d'en compromettre le fonctionnement.

## Component



## Component names

### 1. Radio



### 2. LCD

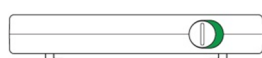


## Use

### 1. Charge

Type	LED	LCD
When charging is in progress,	Red	Each one of three white cells pops up over time.
When charging is complete,	Green	Full with three white cells.

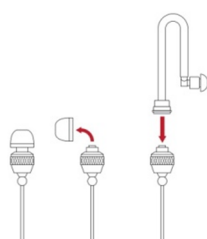
### 2. Turn on



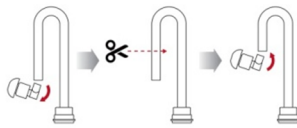
The power switch is on

### 3. Earset connection

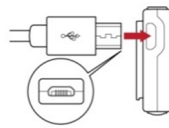
#### • Selecting an ear cap



#### • The adjustment of airtube length



#### • Connecting to the radio



### 4. Volume up/down

The volume goes up by one notch as you push the '+' button.

The volume goes down by one notch as you push the '-' button.

### 5. Button lock

Push the '-' and '+' buttons.

### 6. Communication

① Talk to the device while pushing the PTT button to send your voice to a person on the other radio. Stop pushing the button when you stop talking.

② The earset enables you to hear what the other person says if there is a response.

The ROLLTS DOMINO can make it possible to transmit and receive voice communication or to do those two at the same time.

③ LED indicator

Transmit: Red light flashing. Receive: Green light flashing

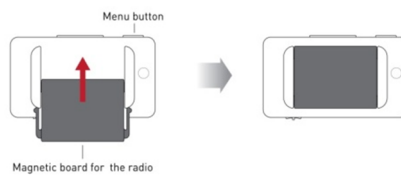
### 7. Calling

① Sending call signal by pushing PTT button repeatedly at a fast speed (3 times within one second) After call sound and vibration ring, call signal is sent.

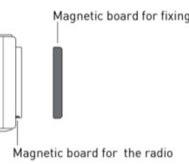
② An alarm and vibration ring occurs on the ROLLTS DOMINO receiving the call signal.

## Select how to wear it

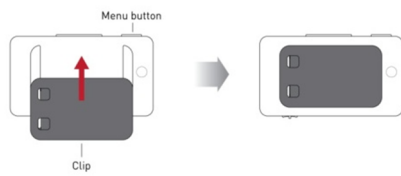
### 1. Magnetic board



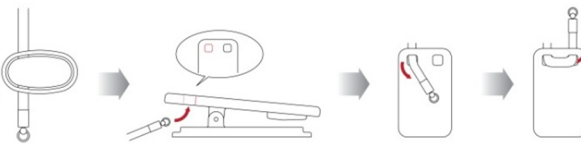
The radio can be fixated to your clothes by locating those two magnetic boards for the radio and fixing your clothes between them.



### 2. Clip



### 3. Necklace



## Checklist for setting up the menu

### 1. Enter the menu

Enter the menu by pushing the MENU menu button for more than 2 seconds.

### 2. Move to a menu item

In the menu, move to an item from another item by pushing the '-' or '+' buttons.

### 3. Select an item

An item in the menu can be selected by pushing the MENU menu button.

### 4. Set up the values

When a selected value flashes, adjust it by pushing the '-' or '+' buttons.

### 5. Move to a value (for numbers only)

Push the MENU menu button to move to the next value.

The previously set value has been set and then the next number starts to flash.

### 6. Complete the setup

Push the MENU menu button to set the flashing value.

### 7. Leave the menu

Push the MENU menu button for more than 2 seconds to leave it. You will automatically leave the menu if you stay there for more than 10 seconds.

## Menu items

**1. TALK MODE:** Every kind of communication is viable between devices whose 'TALK MODE' and 'CHANNEL' match each other. Hi-fi half and hi-fi full are high-quality voice modes that are best used for short-range communications.

**Half-duplex ->** Not available for simultaneous 'transmit' & 'receive' functions. Talking and listening available by taking turns. It works in the same way as other typical radios. Only one radio in the group is allowed to talk.

**Full-duplex ->** Available for simultaneous 'transmit' & 'receive' functions. Able to listen while talking. Two radios in the group are allowed to talk at the same time.

**Tri full-duplex ->** Available for three-way simultaneous 'transmit' & 'receive' functions. Three radios in the group are allowed to talk at the same time.

**Hi-fi half ->** Using the same communication method as the half-duplex mode, this mode allows for high-quality voice communications.

**Hi-fi full ->** Using the same communication method as the full-duplex mode, this mode allows for high-quality voice communications.

**2. CHANNEL:** Every kind of communication is viable between devices with a 'TALK MODE' and 'CHANNEL' that match each other.

**3. GROUP:** If the line is mixed up or the 'CHANNEL' is already taken by other people, set the 'GROUP'. By doing so, communication becomes viable between devices whose 'GROUP' matches each other.

**4. PTT/VOX:** Voice communication can be sent while pushing the PTT button. And, the radio will recognize your voice and then send it automatically. 'VOX' sends all of the voices that it recognizes.

**5. VOX LEVEL:** The 'VOX LEVEL' enables you to control the sensitivity levels of recognized voices when the 'VOX' function is turned on.

**6. EMERGENCY:** 'EMERGENCY CALL' is a function to make a call in an emergency. For example, if you are in an emergency, this function helps you send an emergency call to others on a regular basis, no matter which channel is being used. Those who receive the signal can respond to you through the ROLLTS DOMINO.

send(or to receive) an emergency call, push the MENU menu button and the volume buttons ( '-' or '+' ) simultaneously.

**7. ENCRYPTION:** You can talk with people only if their encryption code is identical to yours.

**8. SIDE TONE:** With the 'SIDE TONE' on, a voice message can be heard through the earset, making it

possible for you to check if it has been sent.

**9. MIC GAIN:** The MIC GAIN allows you to adjust the microphone volume.

**10. ROGER BEEP:** Setting the 'ROGER BEEP' value to 'On' generates a beep at the end of each reception.

**11. RF POWER:** The RF POWER allows you to adjust the strength of the transmission signal.

**12. FEC:** Forward Error Correction (FEC) is a technique used for automatically correcting lost portions of the transmission signal.

**13. DEFAULT SET:** All of the values that have been tuned or changed to meet the needs of the user will be returned to their default settings.

**14. VERSION:** It is used to check the version of your product.

**15. SERIAL NO:** It is used to check the ID number of your product.

## Features

- ① Size (H x W x D): 31 x 56 x 8.5 mm(1.2 x 2.2 x 0.3 inch)
- ② Weight: 18g (0.63oz)
- ③ Multi-party call: Tri full-duplex
- ④ Range (Line of Sight): Up to 2 km (1.24 miles)
- ⑤ Stand-by: One week
- ⑥ Usable time: 2.5 days(24h = 8h talk time + 16h stand-by)  
(1day (24h) = 8h talk time + 16h stand-by)(Talk time: 5-5-90 duty cycle)
- ⑦ Encryption: AES-256
- ⑧ Frequency hopping: 902-928 MHz ISM band, 50 channels, 1,000 groups/channel

### <NOTE>

- ① The maximum range is 2 km with a clear line of sight. The indoor range may be less if there are any obstacles, such as steel or concrete structures.
- ② The 'Stand-by' features our unique low-power technology. It can remain on standby for the maximum hour.
- ③ The 'Talk time' features our unique low-power technology. Based on the estimated standard usage (5:5:90, i.e., a usage ratio of 5% reception, 5% transmission and 90% standby), it can be used for the maximum hour.
- ④ Frequency hopping applied ROLLTS DOMINO ensures clearer and more secure communication by eliminating any frequency interference between systems. (The radio transmits a limited number of data packets over multiple channels and hops through each in a set pattern.)