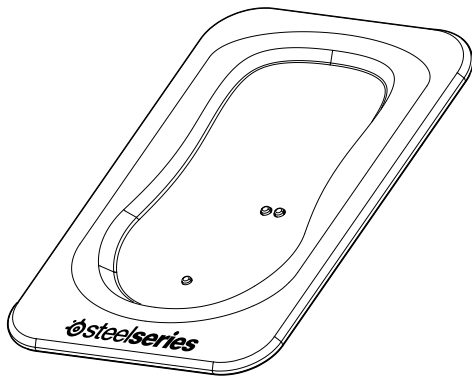


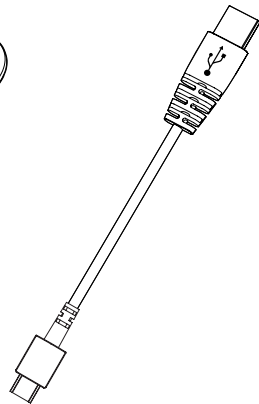
# SENSEI WIRELESS



MOUSE

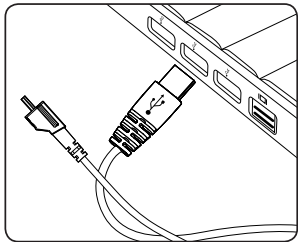


BASE

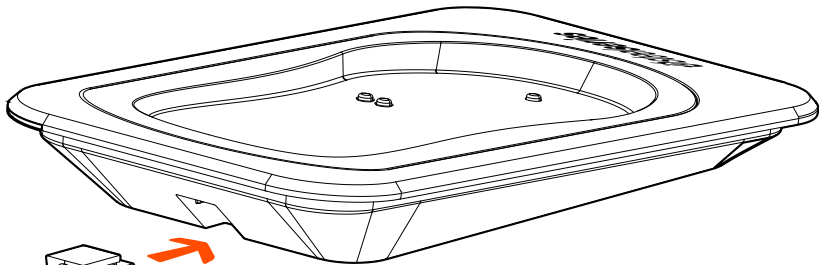


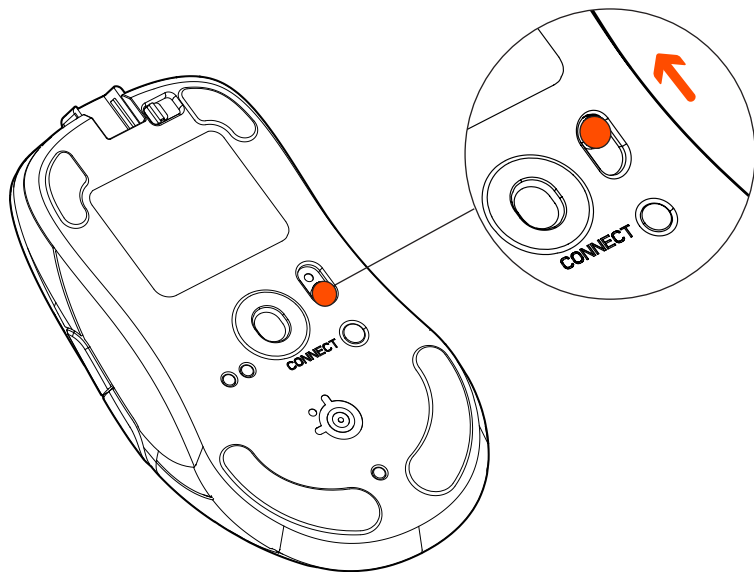
USB CABLE

1

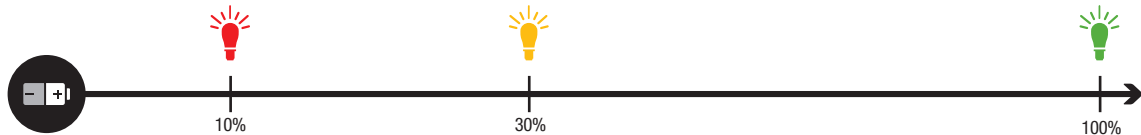


2

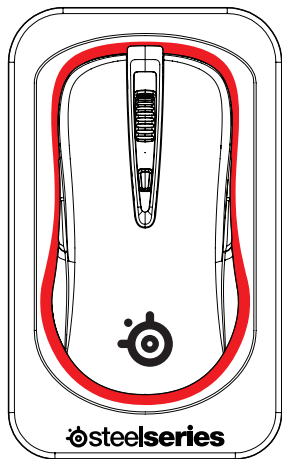




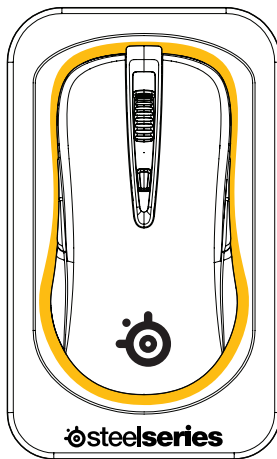
# CHARGING MOUSE ON BASE



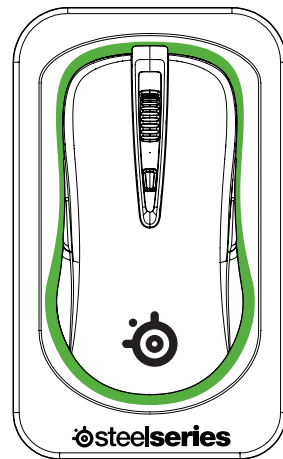
0% - 10%



11% - 30%

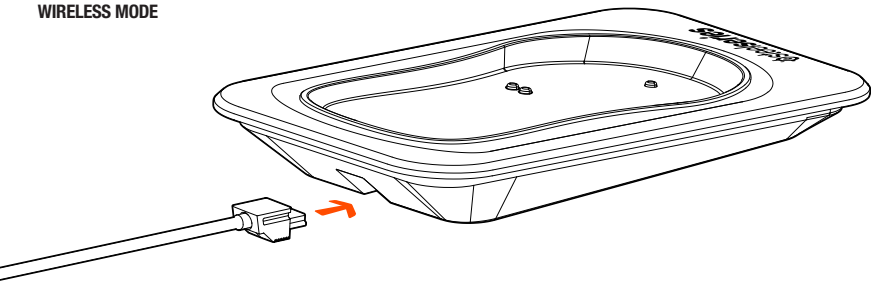


31% - 100%

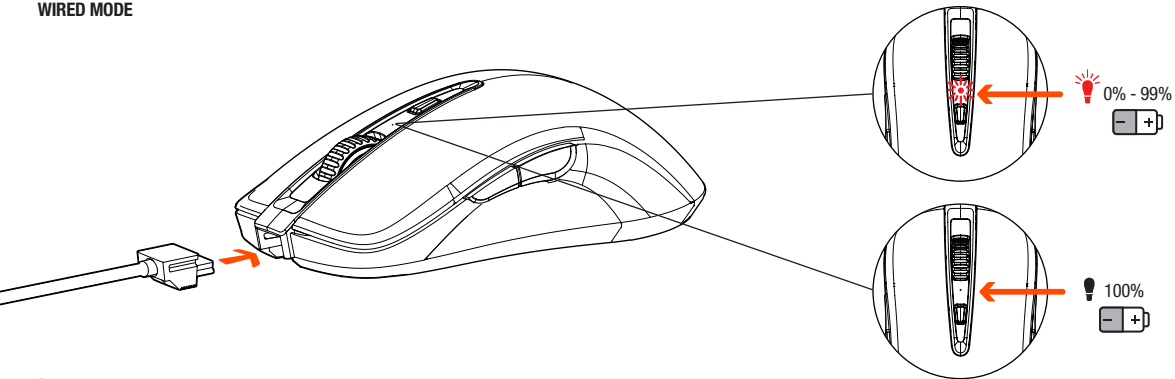


## MODES OF OPERATION

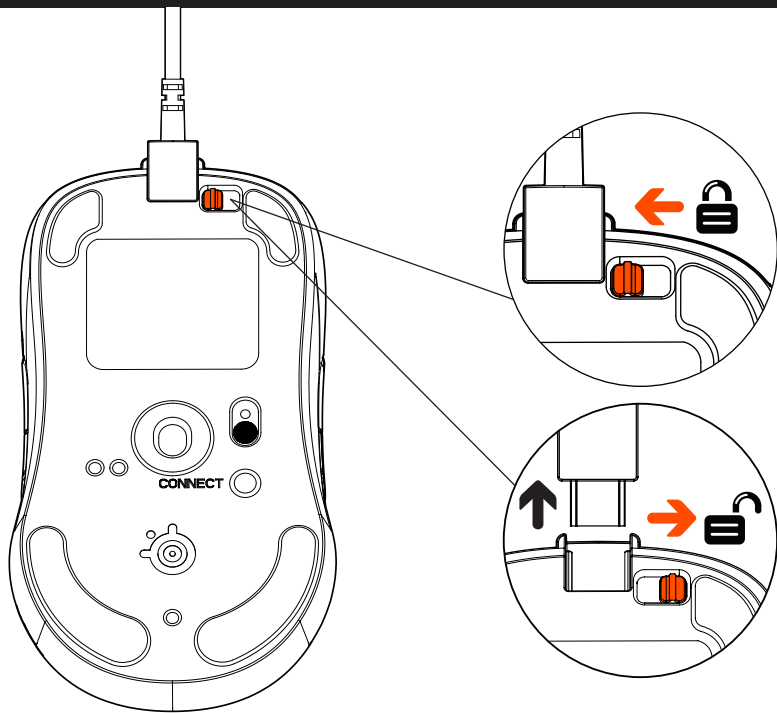
### WIRELESS MODE



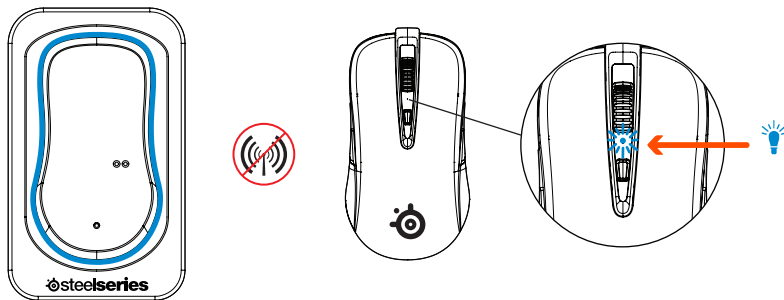
### WIRED MODE



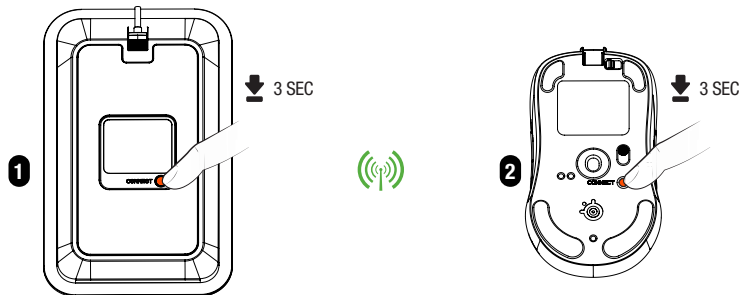
## UNLOCKING CABLE



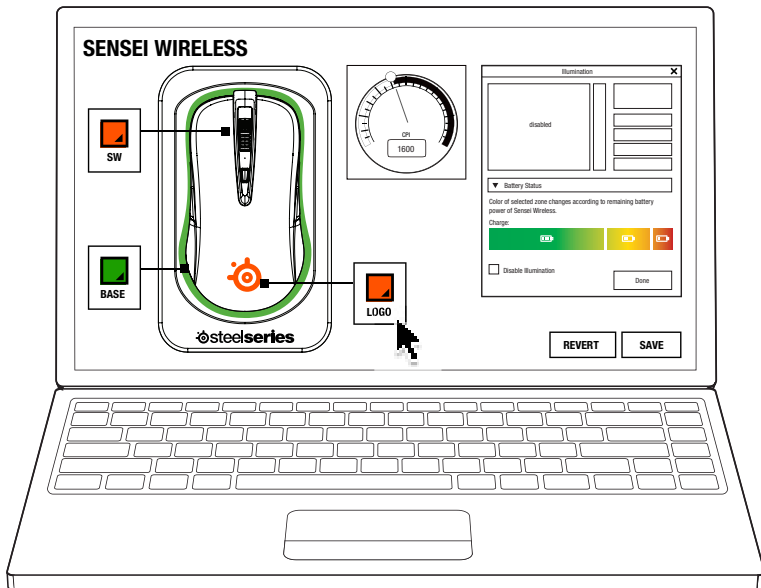
### MOUSE AND BASE NOT CONNECTED OR PAIRED



### PRESS "CONNECT" BUTTONS ON BASE AND MOUSE







[STEELSERIES.COM/ENGINE](https://steelseries.com/engine)



[SUPPORT.STEELSERIES.COM](https://support.steelseries.com)



[FAQ.STEELSERIES.COM](https://www.steelseries.com/faq)



[SHOP.STEELSERIES.COM](https://www.steelseries.com/shop)



Recent research indicates that improper peripheral layout, incorrect body posture and positioning, excessive repetitive motion may be associated with injury to muscles, tendons, or nerves and physical discomfort. Please observe the guidelines below to maximize the enjoyment of your SteelSeries products, avoid injury, and optimize your comfort:

- Place your monitor and keyboard directly in front of you with your mouse adjacent to it. Proper alignment will place your elbows at your side and your back should be straight.
- Adjust your seating position and table so that your keyboard and mouse are below your elbows.
- Keep feet well supported and shoulders relaxed.
- Take breaks during gameplay. Try to relax your wrist and keep it aligned with your forearm. Try not to bend, twist or extend your wrist for long periods of time.



近來研究顯示，不適當的設備擺放，不正確的姿勢，過度的反復運動可能會造成肌肉、肌腱或者神經損傷以及身體不適感。請遵守以下準則來最大化享受SteelSeries的產品，避免受傷和优化你的舒適感：

- 將你的顯示器和鍵盤直接放置在你的面前，並連接鼠標。將手肘放在兩側合適的位置，你的后背應該挺直。
- 調整你的座位位置和桌子，以便於你的手肘低於你的鍵盤和鼠標。
- 保持你的腳被支撐並且放鬆你的肩膀
- 在遊戲中間適當休息。放鬆你的手腕並讓它和前臂保持平直，盡量不要長時間彎曲或者扭曲你的手腕。



近來研究顯示，設備不適當的擺放以及不正確的使用姿勢，加上過多的重覆性動作可能會造成肌肉、肌腱或者神經損傷，以及身體不適感。請遵守以下規範來享受SteelSeries的產品，避免受傷及提升舒適感：

- 將你的螢幕和鍵盤直接放置在你的面前，並連接滑鼠。將手肘放在兩側適當的位置，保持背部挺直。
- 調整你的座位位置和桌子，使你的手肘低於你的鍵盤和滑鼠。
- 保持腳部支撐並且放鬆肩膀。
- 在遊戲中間適當休息，放鬆你的手腕並讓它和前臂保持平直，盡量不要長時間彎曲或者扭曲你的手腕。

## CAUTION

**DO NOT ATTEMPT TO REPLACE BATTERY.**

**RISK OF EXPLOSION IF BATTERY IS REPLACED BY AN INCORRECT TYPE OR HANDLED BY AN INCORRECT WAY. DISPOSE OF USED BATTERIES ACCORDING TO THE INSTRUCTIONS**

### FEDERAL COMMUNICATION COMMISSION INTERFERENCE STATEMENT

This device complies with Part 15 of the FCC Rules. Operation is subject to the following two conditions: (1) This device may not cause harmful interference, and (2) this device must accept any interference received, including interference that may cause undesired operation.

This equipment has been tested and found to comply with the limits for a Class B digital device, pursuant to Part 15 of the FCC Rules. These limits are designed to provide reasonable protection against harmful interference in a residential installation. This equipment generates, uses and can radiate radio frequency energy and, if not installed and used in accordance with the instructions, may cause harmful interference to radio communications. However, there is no guarantee that interference will not occur in a particular installation. If this equipment does cause harmful interference to radio or television reception, which can be determined by turning the equipment off and on, the user is encouraged to try to correct the interference by one of the following measures:

- Reorient or relocate the receiving antenna.
- Increase the separation between the equipment and receiver.
- Connect the equipment into an outlet on a circuit different from that to which the receiver is connected. - Consult the dealer or an experienced radio/TV technician for help.

**FCC Caution:** Any changes or modifications not expressly approved by the party responsible for compliance could void the user's authority to operate this equipment.

This transmitter must not be co-located or operating in conjunction with any other antenna or transmitter.

### INDUSTRY CANADA STATEMENT:

This device complies with RSS-210 of the Industry Canada Rules. Operation is subject to the following two conditions: (1) This device may not cause harmful interference, and (2) this device must accept any interference received, including interference that may cause undesired operation.

Ce dispositif est conforme à la norme CNR-210 d'Industrie Canada applicable aux appareils radio exempts de licence. Son fonctionnement est sujet aux deux conditions suivantes: (1) le dispositif ne doit pas produire de brouillage préjudiciable, et (2) ce dispositif doit accepter tout brouillage reçu, y compris un brouillage susceptible de provoquer un fonctionnement indésirable.

經型式認證合格之低功率射頻電機，非經許可，公司、商號或使用者均不得擅自變更頻率、加大功率或變更原設計之特性及功能。

低功率射頻電機之使用不得影響飛航安全及干擾合法通信；經發現有干擾現象時，應立即停用，並改善至無干擾時方得繼續使用。前項合法通信，指依電信法規定作業之無線電通信。低功率射頻電機須忍受合法通信或工業、科學及醫療用電波輻射性電機設備。

CLASS 1 LASER PRODUCT

Complies with 21 CFR 1040.10 and 1040.11 except for deviations pursuant to Laser Notice No. 50, dated June 24, 2007.



**[WWW.STEELSERIES.COM](http://WWW.STEELSERIES.COM)**