

www.stormblue.co.kr

(주)스톰블루 153-801 서울시 금천구 가산동 60-24 월드메르디앙 벤처센터 1308호 T.080-555-9525 F.02) 2113-8723

STORMBLUE CO., LTD.

Rm 1308, World Meridian Venture Center, 60-24, Gasan-dong, Guemchon-Cu, Seoul, 153-801, Korea

Tel. 82-2-2113-8745 Fax. 82-2-2113-8723



A9+ 사용설명서 User Manual

[VER-2.0]

STORMBLUE

Greetings from Stormblue

Thank you for purchasing Stormblue MP3 player, developed and manufactured by STORMBLUE, located in Seoul, Korea.

Stormblue MP3 players are focusing on those who are very concerned about the identity of the design and sound quality.

Please, visit our website at www.stormblue.co.kr to find more and get customer support.

Caution

※Please note that this device may cause radio interference and should not be used for safety aids.

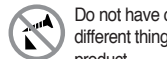
- 02 Safety instructions
- 04 Appearance of player
 - Accessories detail
 - Description of each part of the player
- 06 Preparation to use the player
- 09 Operation of the player
 - Operation In Playback mode
 - Power On / Power Off
 - Playback / Pause
 - Photo & Text file display
 - FF and REW (▶▶ and ◀◀)
 - Volume control and File Navigation
 - A-B Repeat
 - Hold
 - Changing EQ
 - Reset
- 13 Operation in Radio mode
 - Scan mode and save the each station manually
 - Mute
 - FM recording
- 16 Operation in Line-in Recording
 - Operation in Voice Recording
 - Navigation mode
- 17 File copy between SD card and the player / Delete file
- 18 Setup Menu
- 28 Manual for Transcoder program
- 32 Using Bluetooth function
- 35 Firmware upgrade
- 36 Specifications
- 39 Bluetooth Trouble Shooting
- 41 A9+ Trouble shooting
- 42 Warranty

Cautions!

- Do not shake or apply heavy shocks on the product.
It might be the cause of malfunction or damaged.
- Avoid contacting the product with water.
This may cause serious damage to the product. If the player gets wet, wipe with a soft towel or rag as soon as possible.
- When using your headphones/earphones.
Do not wear earphones while driving an automobile, bicycle, or motorcycle.
Not only it is dangerous but also it is illegal in some jurisdictions.
- Listening to the music by earphones at large volume level for extended periods of time may result in damaging your ears.
- You must not newly make any file to CONFIG folder of the player.

To maintain good performance

Avoid high or low temperature and moisture.



Do not have other different things in the product.



Avoid placing the product under high moisture or dust level



Do not drop and impact the product.



Avoid direct sunlight, high temperature from heating device.



Never disassemble, repair or rebuild



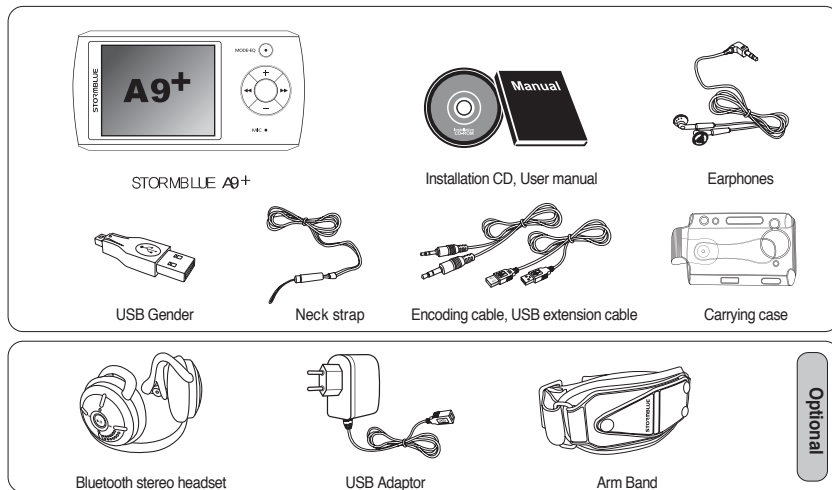
Do not place any magnetic device near the product.



Do not use thinner, alcohol, or benzene when cleaning the product

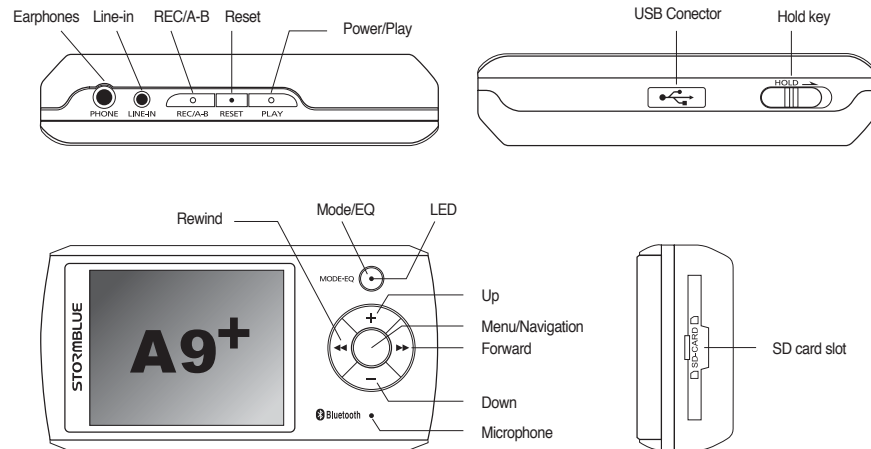
** Earphone should not be inserted into the player when the player is recharged by USB Port from PC.*

Accessories



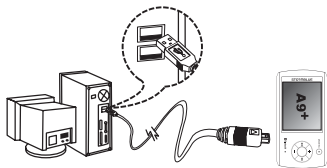
※Accessories could be changed without notice in advance to increase the performance or quality of the product.

Description of each part of the player



Connecting MP3 player to your PC

1. You can connect the player to your PC by included USB cable. Pick up the included USB extension cable and connect it to the USB port of your PC.
2. Plug USB extension cable in the USB port of MP3 player and Plug the other side of the USB Minijack in the Female USB port of the extension cable.



3. Turn on the player by push and hold the power button. Then, a removable disk will appear in your PC when you open windows explorer.
4. Earphone should not be inserted into the Player when the Player is connected to PC

Caution

For users whose OS version is Windows 98 or Windows 98SE

The Driver for Window 98 and 98SE must be installed in your PC before you connect this player to your PC if you use Windows 98 or 98SE OS. Do not install the driver if your OS is Windows ME/2000/XP.

- Insert the provided program CD to the CD Rom drive in your PC.
- Enter Win98 driver folder and Run the Driver for Win98/SE OS.
- You can visit our website www.stormblue.biz to download the driver for Windows 98/SE

File upload/Download

The player should be turned on in advance before you plug it in the USB port

- a. Open Windows Explorer and select the removable disk newly created.
- b. You can just copy/move files from your PC to the removable disk.
- c. You can create many folders in the removable disk to sort out music files.
- d. Just copy or move any files including music files from your PC to a certain folder in your removable disk.
You must not newly make any files to the CONFIG folder of the removable disk.
- e. You can delete/rename any files stored in the removable disk in the same way as you do in the PC.

Disconnecting the player from your PC

- a. Before unplugging the player from the PC, make sure to double click the Green Arrow icon on the task bar on the right bottom of the PC screen.



- b. When the dialogue box is displayed on the monitor, Click the stop button to stop USB Mass Storage Device.
- c. When a new dialogue box appears, click "OK" to clearly remove the removable disk from your PC.
- d. If you use Windows 98 or 98SE, first open windows explorer. Click the removable disk by right button of the mouse and pop-up menu will appear. Then, you can proceed to disconnect the player accordingly.

Caution

Fatal error may occur in the PC or the player if you remove the player without completing above procedures.

Format the player

- Open Windows Explorer and click the removable disk by the right button of the mouse.
- Click the format menu by the left button of the mouse.

Caution

Format function will delete all files in the player. Backup all the important data before formatting the removable disk.

Charging the player

Just connect the player to the USB port when your PC is turned on. Then the charging lamp will be turned on. You don't need to turn on the player before connecting to the USB port if you only want to charge the player. When fully charged, the charging LED will be turned off.

When the player is turned off. : The player is fully charged within 1.5 ~ 2 hours.

When the player is turned on. : The player is fully charged within 4 to 5 hours.

- To enter the Mode menu, click and hold the mode Mode button. To select the Mode and get out of the Mode menu, click Menu button.
- To play music files, select Audio play mode. To play video files, select movie play mode. In the same way, photo view mode is for image file like JPG and TEXT view mode is for playing TEXT file.
- Just click Menu button to enter navigation mode. In navigation mode, you can display any file such as music file, video file, text and image file by click ►► or PLAY button when the cursor is over the file you want to play.
- Copy or move files from your PC to proper folder of the player. Video files to movie folder, TXT files to document folder and image files to photo folder.

Operation in Playback mode

Click and hold Mode button and move to Audio play mode by ►► or ◀◀ button. Then, click Menu button to select the mode.

Button	Click	Present Status	Operation when clicked
PLAY	long	Power OFF	Turn on
		Power on	Turn off
	shortly		Playback of music and movie files.
		Playback	Pause
FF ►►	long	Playback	Foward fast
	shortly	Playback / Pausing	Playback of the Next file
	shortly	Navigation mode	Go to the subfolder
REW ◀◀	long	Playback	Rewind fast
	shortly	Playback / Pausing	Playback of the previous file
	shortly	Navigation mode	Go to the Previous folder

Operation in Playback mode

Button	Click	Present Status	Operation when clicked
+(Up)	long/short	Playback	Volume up
	shortly	Navigation mode	File search
- (Down)	long/short	Playback	Volume down
	shortly	Navigation mode	File search
MODE/EQ	shortly	Playback	Switching EQ (Flat-POP-Rock-Live-Classic-Vocal-Dbass-User EQ)
	long	Power on	Enter Mode menu
REC/A ↔ B	shortly	Playback	Start A-B repeat function marking A point
		Playback	Start A-B repeat function marking B point
		A ↔ B repeat	Finish A-B repeat
	long	Navigation mode	File Copy, Delete, Cancel
Menu/Navi	shortly	Playback	Enter Navigation mode
	long	Playback/Pausing	Enter menu
Hold	push	Hold Off	Deactivate all button
		Hold On	Activate all button

Power On / Power Off

- Push and hold the Power/Play button to turn on the player.
- Do the same to turn off the player

Playback / Pause

- When powered on, just click Power/Play button
- You can replay music file by click ►► button when the cursor is over the very file in Navigation mode
- In this same way, you can also run text files and JPG image files.
- If you power off the player during playback of the music file and turn it on again, just click the Power/Play button. Then, it resumes the music file from the last point of playback.

Photo & Text file display

- Image display function only support JPG file. Just copy jpg files from your PC to the player.
- Text display function only support TXT file. Just copy TXT files from your PC to the player.
- To display TXT files and JPG files, click Play button in navigation mode when the cursor is placed over the file to display.
- To see the TXT file written in local languages, you first have to set up the language option at your language.

FF and REW (▶▶ and ◀◀)

During playback of music and movie files

- Push and hold ▶▶ button, then it will forward the current file fast.
- Click ▶▶ button, then it will replay or move to the next file.
- Push and hold ◀◀ button, then it will rewind the current file fast.
- Click ◀◀ button, then it will replay or move to the previous file.

[When running a JPG image or TXT file]

- Click ▶▶ button, then it will run the next file.
- Click ◀◀ button, then it will run the previous file.

Volume control and File Navigation

- Click + or – button to increase or decrease the volume level.
- Click + or – button to move up and down cruising on the file in the Navigation mode.

A-B Repeat

- When replaying music file, click REC/A ◀B button to mark the start point of the repeat
- Then, click the same button in a few moment to mark the ending point of the repeat. Then, the repeat will start.
- To finish A-B repeat, just click the same button again.

Hold

- Push this button in the direction of the arrow. It disables all the button to avoid unintentional operation

Changing EQ

During playback, just click MODE/EQ button and EQ will be switched sequentially.

Flat → POP → ROCK → Live → Class → Vocal → DBass → USER

Reset

- When your player suddenly get halted for some reason, push the reset button with a sharply-ended instrument like pin or clip and It will reset the player by force. Then, turn on your player.
- Reset is different from Format and all data is safe after reset

Operation in Radio mode

- Click and hold Mode button and move to FM radio mode by ▶▶ or ◀◀ button. Then, click Menu button to select the mode.

Button	Click	Present status	Operation when clicked
PLAY	short	Mute OFF	Mute ON
		Mute ON	Mute OFF
		Recording	Pausing the current recording
		REC Pause	Restart the paused recording

Button	Click	Present status	Operation when clicked
FF ►►	Long	Scan	Move to the next station increasing Frequency
		Save	Increase the register address to save current station
	Short	Auto Scan	Stop searching for other station
		Scan	Increase the frequency by 1step
		Preset	Move to next station saved
REW ◀◀	Long	Save	Increase the register address to save current station
		Scan	Move to the next station decreasing Frequency
	Short	Scan-Save	Decrease the register address to save current station
		Auto Scan	Stop searching for other station
		Scan	Decrease the frequency by 1step
REC/A ↔ B	Long	Preset	Move to next station saved
		Scan-Save	Decrease the register address to save current station
	short	REC/Ready	Start recording
		REC	Finish recording
		Preset	Auto Memory Scan start and up to 20 stations can be registered.
Menu/Navi	Short	Scan	Turn to the Save mode to save the selected station
		Scan saving	Save the selected station
	Short	Preset	Turn to Scan mode

Scan mode and save the each station manually

■ The default of FM radio is set in Scan mode.

- Click and hold ►► or ◀◀ button to move to next station.
- To save the current station, click REC/A-B button and the register address for the station will appear
- The address can be changed up and down by click ►► or ◀◀ button.
- After you adjust the address, click REC/A-B button again to save the station.

■ Preset mode and save all station automatically

- You can switch to Preset mode after you save at least one radio station in Scan mode.
- Click Navi/Menu button to switch to Preset mode.
- Click REC/A-B button to automatically search for all available station and it will be saved automatically up to 20 stations.
- Click ►► or ◀◀ button to move to next station.

Mute

- To mute FM radio, click Play button. To resume FM radio, click the same button again.

FM recording

- Listening FM radio, click hold on REC/A-B button to record the current broadcast.
- To finish the recording, just click the same button.
- To pause and resume the recording, click the PLAY button.
- Recorded file is found in FMREC folder in Navigation mode.

Operation in Line-in Recording

Click and hold Mode button and move to Line in REC mode by ►► or ◀◀ button. Then, click Menu button to select the mode.

■ Dubbing CD track to MP3 player

- Connect your MP3 player and other sound resources like CD player with included encoding cable.
- Press and hold EQ/Mode
- Click play button of the CD player and REC button of MP3 player simultaneously.
- To finish dubbing, click REC button of MP3 player again.
- To pause and resume the recording, click PLAY button sequentially.

■ Use CD sync function

- With CD sync function turned on in setup menu, you can dub all track of CD into each WMA file at once.
- When you dub your Cassette tape to MP3 player, make sure to deactivate CD sync option.

Operation in Voice Recording

Click and hold Mode button and move to Voice REC mode by ►► or ◀◀ button. Then, click Menu button to select the mode.

- Click REC button to start recording. To finish recording click the same button again.
- To pause and resume the recording, click PLAY button sequentially.
- Recorded file is found in Voice folder in Navigation mode.

Navigation mode

To enter navigation mode, just click the menu button

Button	Click	Operation when clicked
Menu	Short	Run the file selected
	Long	Move to setup mode
REW (◀◀)	Short	Move to the upper folder
FF (▶▶)	Short	Move to the sub folder
+ / -	Short	Moving cursor
REC	Short	Cancel and return
	Long	Copy file, delete file

File copy between SD card and the player / Delete file

A9+ support external SD card.

- Put SD card into the SD card slot and 'external' folder will be created
- Click Menu button to enter navigation mode.
- Enter a certain folder and move the cursor on the file you want to copy Click and hold REC button
- When the dialog box appears, you can choose file copy or delete function using REW(◀◀) button or FF(▶▶) button
- To select and run copy or delete function, Click Menu button.
- Files are copied to 'copied folder' Find the 'copied' folder in Navigation mode

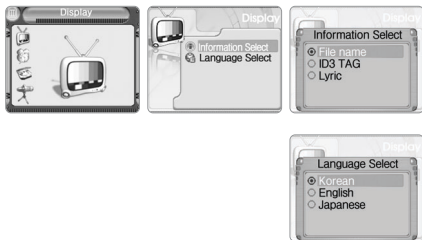
This chapter is to set up all option of the player. Click and hold Menu button to enter Setup menu. Move to each Setup by + or - button and click Menu button to enter the selected setup menu.

- To enter submenu, click Menu button
- To select options in submenu and go back to the previous menu at once, also click Menu button
- To go back to the initial stage of Setup menu, click ◀◀ button.
- To completely get out of the Setup menu, Click and hold the Menu button.

Display Setup

The function of Button in this Setup

- + and - : up and down of the cursor
- Menu button : Enter the submenu / Select (finish) the option in submenu and go back to the previous stage
- ◀◀ button : Go back to the initial stage. After getting back to the initial stage, click and hold Menu button to completely get out of the Setup menu.



Information

- File name : display the file name of the song going on.
- ID3 tag : display the ID3 tag of the song going on
- Lyric : display the lyric of the song going on manually or automatically

Language select

- Select language at your preference

Time Setup

The function of Button in this Setup

- + and - : up and down of the cursor / Adjust the figure (number) / Switch AM and PM
- Menu button : Enter the submenu / Select (finish) the option in submenu and go back to the previous stage
- ▶▶ and ◀◀ : Move to the next column
- ◀◀ button : Go back to the initial stage / After getting back to the initial stage, click and hold Menu button to completely get out of the Setup menu.
- Mode button : Switch On and Off



Current Time

- Adjust the current time

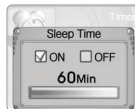
Backlight Time

- Adjust the time during which the backlight is on if there is no click on any button.

Time Setup

**Off Time**

- Adjust the time after which the player is turned off if there is no click on any button.
- This setup doesn't work if there is any file going on or the player is in FM mode.

**Sleep Time**

- Adjust the time after which the player is turned off.

**Alarm Time**

- Adjust the time on which you want to wake up or get noticed

**FM REC Time**

- Adjust the time for automatic recording of the designated station. You have to adjust starting time and finishing time as well as a day of the week and the radio station.

Play Setup

The function of Button in this Setup

- + and - : up and down of the cursor
- Menu button : Enter the submenu / Select (finish) the option in submenu and go back to the previous stage
- ►► and ◄◄ : Increase or decrease the percentage in play speed setup / Move to the next column in search speed setup/
- ◄◄ button : Go back to the initial stage. After getting back to the initial stage, click and hold Menu button to completely get out of the Setup menu.

**Folder mode**

- Folder1 : replay the songs in the current folder
- Folder all : replay songs in all folder in the player

Repeat mode

- Normal : no repeat
- Repeat 1 : repeat the current songs going on
- Repeat all : repeat all songs in the current directory or all directory
- Random : replay all songs in the current directory or all directory at random
- Intro : replay only the introductory part of the songs for overview.

Play Setup



Play speed

- Adjust the playback speed by percentage. The default is at 100%



Search speed

- Adjust the search speed for forwarding fast and rewinding of songs.

Recording Setup

The function of Button in this Setup

- + and - : up and down of the cursor
- Menu button : Enter the submenu / Select (finish) the option in submenu and go back to the previous stage
- ►► and ◀◀ : Increase or decrease the recording level
- ◀◀ button : Go back to the initial stage. After getting back to the initial stage, click and hold Menu button to completely get out of the Setup menu.
- Mode button : Switch On and Off in audio REC setup.



Voice REC Setup

- Adjust quality of the recording by ►► and ◀◀ button

Audio Recording Setup



Audio REC setup

- Adjust quality of the recording by ►► and ◀◀ button. Switch on and off for CD sync function. CD sync is a function to dub all track in CD into respective WMA file.



Line in REC Volume Setup

- Adjust the volume of the recording by ►► and ◀◀ button

Sound Setup

The function of Button in this Setup

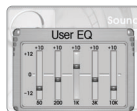
- + and - : Up and down of the cursor / Adjust the EQ level in User EQ / Switch WOW and Trubass in SRS setup /
- Menu button : Enter the submenu / Select (finish) the option in submenu and go back to the previous stage
- ►► and ◀◀ : Move to next EQ column in User EQ / Adjust the level of SRS and Trubass in SRS setup
- ◀◀ button : Go back to the initial stage. After getting back to the initial stage, click and hold Menu button to completely get out of the Setup menu.



EQ mode

- Select EQ at your preference.

Sound Setup



User EQ

- Make your own EQ setup

FM radio Setup

The function of Button in this Setup

- + and - : Up and down of the cursor
- Menu button : Enter the submenu / Select (finish) the option in submenu and go back to the previous stage
- ◀◀ button : Go back to the initial stage. After getting back to the initial stage, click and hold Menu button to completely get out of the Setup menu.



FM area

- Select the correct area for FM broadcast for your nation.

FM radio Setup



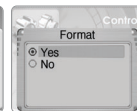
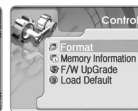
Stereo mode

- Switch mono and stereo.

Control Setup

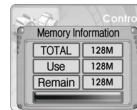
The function of Button in this Setup

- + and - : Up and down of the cursor
- Menu button : Enter the submenu / Select (finish) the option in submenu and go back to the previous stage
- ◀◀ button : Go back to the initial stage. After getting back to the initial stage, click and hold Menu button to completely get out of the Setup menu.



Format

- This menu will format your player and all files will be deleted.



Memory information

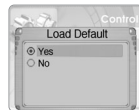
- Show the current status of memory use.

Control Setup



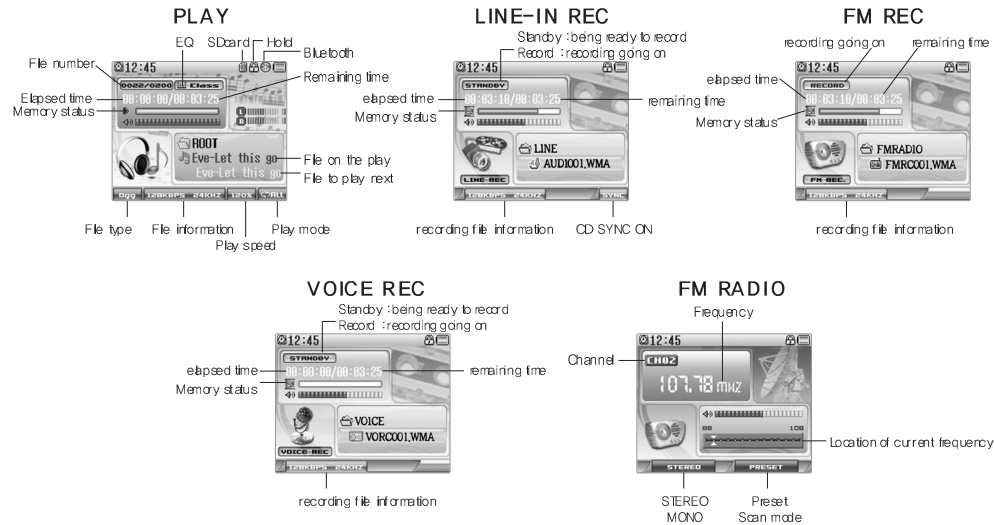
Firmware upgrade

- See the firmware upgrade part



Load default

- This will change all setup to the status of factory setup.
This function doesn't delete any file.

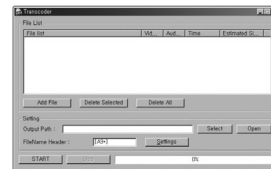


Manual for Transcoder program

- Transcoder program is to compress certain movie files such as AVI, MPG, WMV, ASF as well into a special format for this player so as to replay those video files in this player.
- Install transcoder program
 - Put included program CD in the CD Rom Drive of your PC
 - Enter the 'transcoder Folder'
 - Install the program by double-click on the setup file
- PC System Requirements
 - PENTIUM 3 / WINDOWS 98/ME plus
 - DIRECTX 9.0 / WMV 9.0 plus must be installed in your PC
 - Integrated Codec must be installed in your PC.
- Available Format
 - RAW, AVI, MICROSOFT WMV, DAT, MPG, ASF...
 - Some files in above format may not be compressed by Transcoder program.
- Necessary Codec to be installed (3 codecs mentioned below must be installed)
- Direct X : install 9.0 version or later version.

Visit www.microsoft.com/windows/directx/default.sapx and enter download center menu
Download Direct X and install it.
- WMV9 : Visit above site and enter download center menu. Download and install windows media player version 9.0 or later version. (No need to install if your current version of windows media player is later than 9.0 version)
- Integrated codec : Visit www.free-codecs.com and download a latest version of 'K-lite codec pack' and install it.

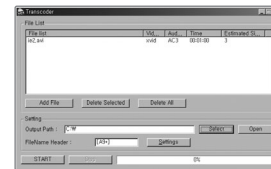
Transcoding video files



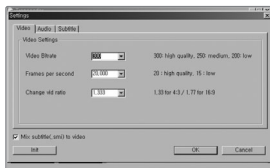
1. Click the icon of "Transcoder" and see the main picture as below.



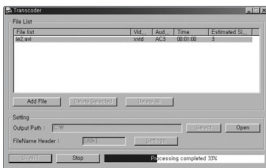
2. Press the "Add File" button and open the file is available to be converted. Or drag and drop the Movie file to the file list.



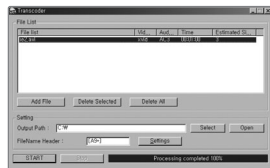
3. To change the Folder be saved the transcoded file, press the "Select" button and point the location.
If you specify the "File name header", be added when the transcoded file will be saved automatically.



4. Press the “Settings” button and adjust the setting in connection with Video /Audio/Caption.
More details, see the instruction beside of setting menu.



5. Press the “Start” button and be started the progress of transcoding. (To be showed the progress of states for transcoding as blue bar)



6. If show the “Processing completed 100%”, were able to play the file be transcoded by A9+ normally.

Be saved the transcoded file as XXX.AVI.

If copy the transcoded file to the Movie folder or Root, be able to play the file same as music one.

Setup Transcoder program

Click ‘Setup’ button



Video

- Adjust the size and image quality of Transcoding video files. The maximum size is 220 ×176.



Audio

- Adjust the sound quality of Transcoding files.



Path

- Designate the folder in which to save the transcoding files.

※ Bluetooth is optional function and this section is only for A9+ Bluetooth model

Using Bluetooth function

The function of Button in this Setup

- + and - : up and down of the cursor
- Menu button : Enter the submenu / Select (finish) the option in submenu and go back to the previous stage
- ◀◀ button : Go back to the initial stage. After getting back to the initial stage, click and hold Menu button to completely get out of the Setup menu.

[The first stage to connect Bluetooth equipment]



- Move to the Bluetooth setup menu



- Click Menu button to enter submen



- Place the cursor at ON and click Menu button again to initialize the Bluetooth.
To connect the Bluetooth headphones or speakers, they must be turned on and ready to be connected.



- Select 'search device' menu to automatically find and register the bluetooth headphones or speaker.



- If there are any bluetooth equipments already registered, use 'connect device menu' to connect them quickly.



- Password must be input to register any bluetooth product. There is the password of the connecting device in its manual. Use + or - button, ►► or ◀◀ button to choose numbers and click Menu button to input the number. After finishing to input password, move the cursor to 'OK' button and click Menu button to complete this process.



- When connected or failed to connected, it display the message.

[Bluetooth instructions]

1. There could be radio(electric wave) interference between bluetooth equipment and other device such as industrial equipments, medical equipments and microwave ovens which use similar range of frequency. It can not be avoided technically.
2. Stand at least 5m away from wireless LAN area to use bluetooth without radio interference
3. The available range of bluetooth is basically 10m and it will be disconnected if it gets away more distantly. The range can be changed depending on the circumstance of the place. Some high obstacles like partitions, corner of the wall affects the radio acceptance causing noise to the wireless sound transmission.
4. Touch on the antenna part of bluetooth can cause some noise and malfunction.
5. When registering bluetooth equipment to the player, do not place them far.

Firmware upgrade

- 1) Please, keep up with new firmware released on our website at www.stormblue.biz
- 2) Download a updated firmware file from the STORMBLUE website and unzip the file if the file format is zip file.
- 3) Turn on the player and connect it to the USB port of your computer and then a removable disk will appear. Copy the firmware file to Config folder of the player
- 4) Safely remove the removable disk and pull the player off the USB port. (When disconnected, the player will be automatically turned off).
- 5) Power on the player and click and hold the 'Menu' button to enter menu mode.
- 6) Enter control menu and enter F/W upgrade menu by clicking Menu button. Click 'yes' by Menu button and then it upgrade F/W by itself.

Caution!

- * Check the current firmware version of your player. Firmware upgrade will be implemented only for higher version of firmware.
- * When you make a firmware upgrade, make sure the battery has been charged enough. (The remaining battery must be over one-third of battery full)

Specifications about MP3 part

ITEM	Contents
Audio Format	MPEG1,2,2.5 Layer3(8~320Kbps, VBR), WMA Version 9 (32 ~ 320Kbps) Ogg Vorbis (Q1 - Q10) ID3 Tag Ver1.0/ 1.1/ 2.0 Support
Audio Encoding	WMA (32Kbps - 128Kbps)
Recording time	Max 35 hours with 512MB
Video Format	Support MPEG4 Simple Profile. Support AVI file format with .mp4 extension. Support 220 × 176, 20 frames. Support Windows Tool program, which is released transcoder.
Image	Text View JPEG (ISO/ IEC 10918-1, Annex F - Sequential DCT-based mode of operation.)
Display	2.0" TFT LCD (220 × 176)
Sound	23mW +23mW sound output / S/ N ratio : 90dB
Battery	1050mA Li-poly battery (charging time : 140 minutes)
File System	FAT12, FAT16, FAT32
Capacity	1GB ~4GB
Extendable slot	For SD card
Playback Time	MP3 Play time : 39 hours, LCD off (11 hours with movie files)

ITEM	Contents
PC Interface	USB 2.0 : Mass Storage Class Speed : Up Load 5 Mbps / Down Load 4Mbps
Support OS	Windows98 / 98SE / ME / 2000 / XP / 2003
Audio	Headphone Out, Line-In, Bluetooth TX (Option)
EQ	POP, Rock, Classic, Vocal, Live, D-bass, Flat, 5 Band User EQ
Copyright Protection	WMA Portable Device DRM (WMA PD DRM), MarkAny DRM (XSync)
FM Radio	FM Tuner (20Preset) / World wide channel support
Audio post processing	Equalizer (Normal, Pop, Rock, Live, Classic, Vocal, Dbass, User)
Firmware Upgrade	Firmware Upgradeable
Music Management	Play List(M3U)
Dimension	84 × 43 × 19mm (70g)
Lyric Support	Automatic & Manual (Media Sync)

Specifications about Bluetooth part

ITEM	Contents
Bluetooth version	Version 2.0 Specification compliant
Radio frequency range	2.402GHZ~2.480GHZ
Radio power	0.01mW (average RF on whole 79 channel)
Radio power class	Class 2
RX sensitivity	-82.0dBm
Radio Range	up to 10m
Security	Level 3 (Link level)
Profile	A2DP (source), AVRCP (target)

When you connects the player and a Bluetooth headphone, please refer to manuals of the player and the headphone. But, if you encounter problems while your using the player, this section will help guide you on how to solve them.

1. Before you use the player Bluetooth, you must set Bluetooth mode to "On" in Bluetooth Menu.
- Also a Bluetooth headphone to use must be turned on.
2. The player can't search a Bluetooth stereo headphone to use
- Ensure that the headphone is stereo type. the player support only stereo type, not mono type.
- Check if the has been set to discoverable mode or pairable mode. the player searches headphones only in these modes.
3. The player fails to register a Bluetooth stereo headphone
- Check if the headphone has been set to pairable mode. the player registers headphones only in this mode.
- Ensure that PIN code is right. PIN code must be the same as the headphone's.
4. The player can't connect to a Bluetooth stereo headphone
- Ensure that the player registered the headphone. Before connection, the player must register the headphone.
- If the player and the headphone are paired already, re-register the headphone. Registered information can be deleted in two devices.
- Check the battery status. If the battery is too low, the player can't connect to the headphone normally.

5. No sound in a Bluetooth stereo headphone

- Ensure that the player and the headphone are connected.
- Ensure that the player plays music.
- Check the volume of the headphone
- Check the battery status. If the battery is too low, the player can't transfer music to the headphone normally.

6. Volume control doesn't work when using Bluetooth headphone

- You must use the volume button on the Bluetooth headset to adjust the volume of the player
- The volume key of the player is available only when using normal earphones

7. You don't know what's wrong

- If you operate the player and a headphone as manuals but you can't listen to no sound at the headphone and you don't know what's wrong, try to do next :
Turn off the headphone and on again. Also, set Bluetooth of the player to Off mode and to On mode again. And repeat as manuals.
- If you repeat but you can't listen to no sound, please contact to us, StormBlue.

1. The Player does not power on

- Lock is in the HOLD position? (Release the hold)
- The batteries are exhausted? (Recharge the batteries)
- Click the Reset Button and initialize the player

2. No sound is heard from player or distortion is heard during playback

- Check whether VOLUME is set to "0".
- Make sure that there are MP3 files in the memory
- Check whether plug is dirty.
- Corrupted MP3 or WMA files may make a static noise and the sound may cut off. Try with other files.

3. Characters on LCD are abnormal

- Check the language is setting at "English" in MENU

4. FM Radio does not work

- Adjust the position of the player and earphones.
(The earphones works as antenna, they must plugged in for best reception)
- Turn off the power of other electric devices near the player.

5. Failed download

- Make sure the USB Cable is connected properly.
- Check the condition of the battery.

6. The player works abnormally or does not play

- Click the Reset button and initialize the player.

- 1) This product has been manufactured under strict quality and control inspections.
- 2) If the product breaks down during normal usage, our dealer/or service center will fix the product for the period free listed in the warranty as below.
- 3) A service fee may apply after the warranty period or in case of the following.
 - If the problem was caused by the customer's misuse.
 - If any internal modification was done by the customer.
- 4) We do not reissue warranty certificate. Please store it in a safe space.

Product			
Model Name			
Customer	Name		
	Address		
	Tel		
Purchaser	Name		
	Address		
	Tel		
Date of Purchase	Month	Day	Year
Period of Warranty			

* For more information about Customer support, please visit our web-site at www.stormblue.co.kr



Bluetooth MP4 Player **A9+**
STORMBLUE

THIS DEVICE COMPLIES WITH PART 15 OF THE FCC RULES. OPERATION IS SUBJECT TO THE FOLLOWING TWO CONDITIONS: (1) THIS DEVICE MAY NOT CAUSE HARMFUL INTERFERENCE, AND (2) THIS DEVICE MUST ACCEPT ANY INTERFERENCE RECEIVED, INCLUDING INTERFERENCE THAT MAY CAUSE UNDESIRE OPERATION.

NOTE: THE MANUFACTURER IS NOT RESPONSIBLE FOR ANY RADIO OR TV INTERFERENCE CAUSED BY UNAUTHORIZED MODIFICATIONS TO THIS EQUIPMENT. SUCH MODIFICATIONS COULD VOID THE USER'S AUTHORITY TO OPERATE THE EQUIPMENT

NOTE: This equipment has been tested and found to comply with the limits for a Class B digital device, pursuant to part 15 of the FCC Rules. These limits are designed to provide reasonable protection against harmful interference in a residential installation. This equipment generates, uses and can radiate radio frequency energy and, if not installed and used in accordance with the instructions, may cause harmful interference to radio communications. However, there is no guarantee that interference will not occur in a particular installation. If this equipment does cause harmful interference to radio or television reception, which can be determined by turning the equipment off and on, the user is encouraged to try to correct the interference by one or more of the following measures:

- Reorient or relocate the receiving antenna.
- Increase the separation between the equipment and receiver.
- Connect the equipment into an outlet on a circuit different from that to which the receiver is connected.
- Consult the dealer or an experienced radio/TV technician for help.