

Table of Contents

- Introduction
- Safety Precautions
- List of Items
- Product Introduction
 - Basic Functions
 - Parts Names
 - Menu Configuration
- How to use manager program
 - Installing software to PC
 - Driver Installation
- File Download/Upload
 - Connecting to a Computer
 - File Download /Upload
 - Formatting
 - Disconnecting from PC
- Recording
 - Voice Recording
 - Line-IN Recording from external audio source
- FM Radio mode
 - Searching FM Frequencies
 - Storing the selected frequency
 - FM Turner and Recording
- Delete
 - Delete File or Folder

<Additional Function>

- Setting Ranged Repeat
- Select EQ
- SETUP Folder Menu
- Search Speed
- FM BAND Setting
- Navigation
- Playback Mode

<Function of MP3 Player>

- Basic Function
- Music Listening
 - Playing Audio Files (MP3/WMA)
 - Listening to FM Radio
 - Voice Recording / Voice File Playing

- Control
 - Control Function
- Manager Program
 - FONT Download
 - Firmware Upgrade
- Product Specification
- Other Instructions
 - Troubleshooting
- Warranty

- Digital Audio Player, Xuke

XUKE is a PLUG & PLAY type portable digital audio player that supports MP3 and WMA multi file formatting, FM Radio, Voice Recording and encoding function. Xuke uses Li-polymer rechargeable battery which allows for more than 14hours non-stop play from 2 hour USB Charge. Xuke also provides GUI (Graphical Users Interface) and Firmware Upgrade that allow the user operate various functions more easily and quickly. Please visit our worldwide web-site at www.stormblue.co.kr and upgrade your firm-ware with the newest firmware function.

- Cautions

<To maintain good performance>

Avoid high or cold temperature and moisture.



Do not drop or cause impact the product.



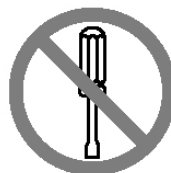
Do not have other different things in the product.



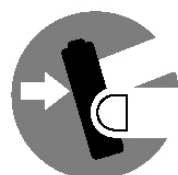
Avoid direct sunlight, high temperature from heating device.



Avoid placing the product under high moisture or dust level



Never disassemble, repair or rebuild



Do not place any magnetic device near the product.



Do not use thinner, alcohol, or benzene when cleaning the product

<Safety >

- Do not shake or apply heavy shocks on the product

It might be the cause of malfunction or damaged

-Avoid contacting the product with water

This may cause serious damage to the product. If the player gets wet, wipe with a soft towel or rag as soon as possible.

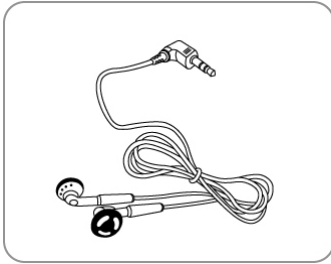
<Using your headphones/earphones>

-Do not wear earphones while driving an automobile, bicycle, or motorcycle. Not only it is dangerous, but it is also illegal in some jurisdictions.

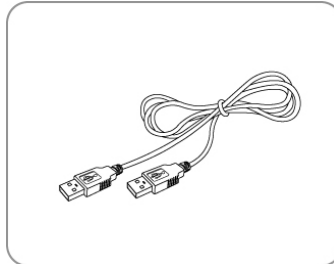
-Listening to the player at full volume level for extended periods result in hearing damage.

- **Included Accessories**

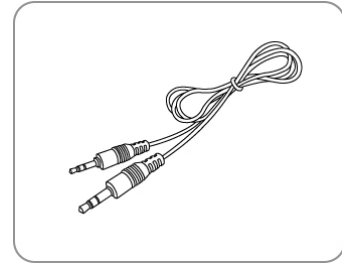
Earphones



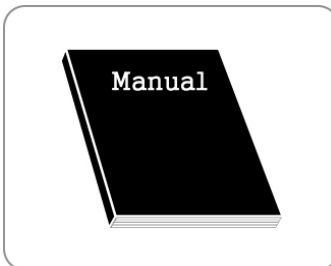
USB Cable



Audio Cable



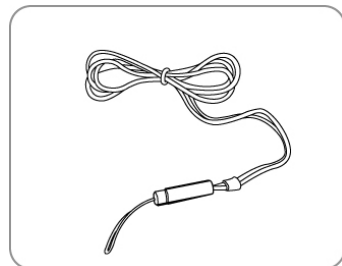
User's Manual



Install CD



Neck Strap



Arm Band
(Optional)

Carrying Case
(Optional)

* Items can be changed without notice to increase the performance or quality of the product.

- **Product Introduction**

-Feature

Multi-Codec Player

Supports both MP3 and WMA file format

Firmware Upgrade

Firmware download are available to easily upgrade the newest functions on this product.

Multi Languages Support with Graphic OLED

Display localized file names in 35 languages with graphic OLED screen.

FM Radio Listen and Record

Worldwide range/Auto-search/user defined pre-set frequencies

7-Mode EQ

Supports a 7-Mode EQ for best listening: FLAT, POP, ROCK, LIVE, CLASSIC, VOCAL, DBASS

Support (Graphic User Interface) MENU

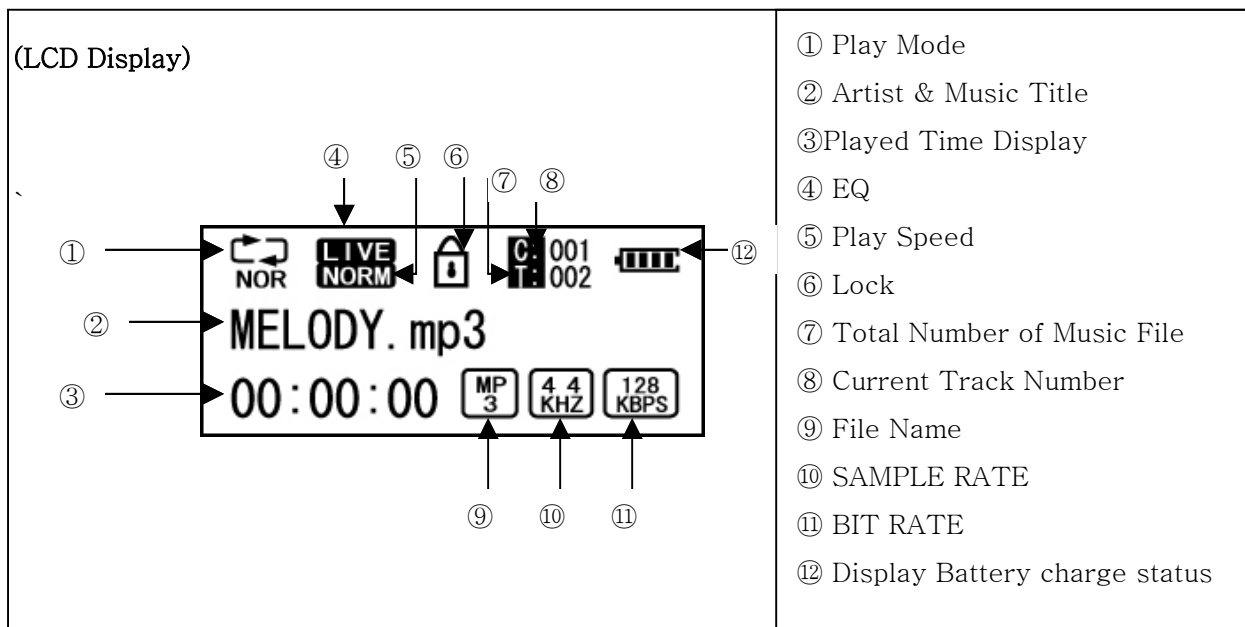
Enjoy GUI and well structured MENU tree.

Support Direct Encoding

Supports direct encoding features that accepts output from external audio sources.

Easy Navigation

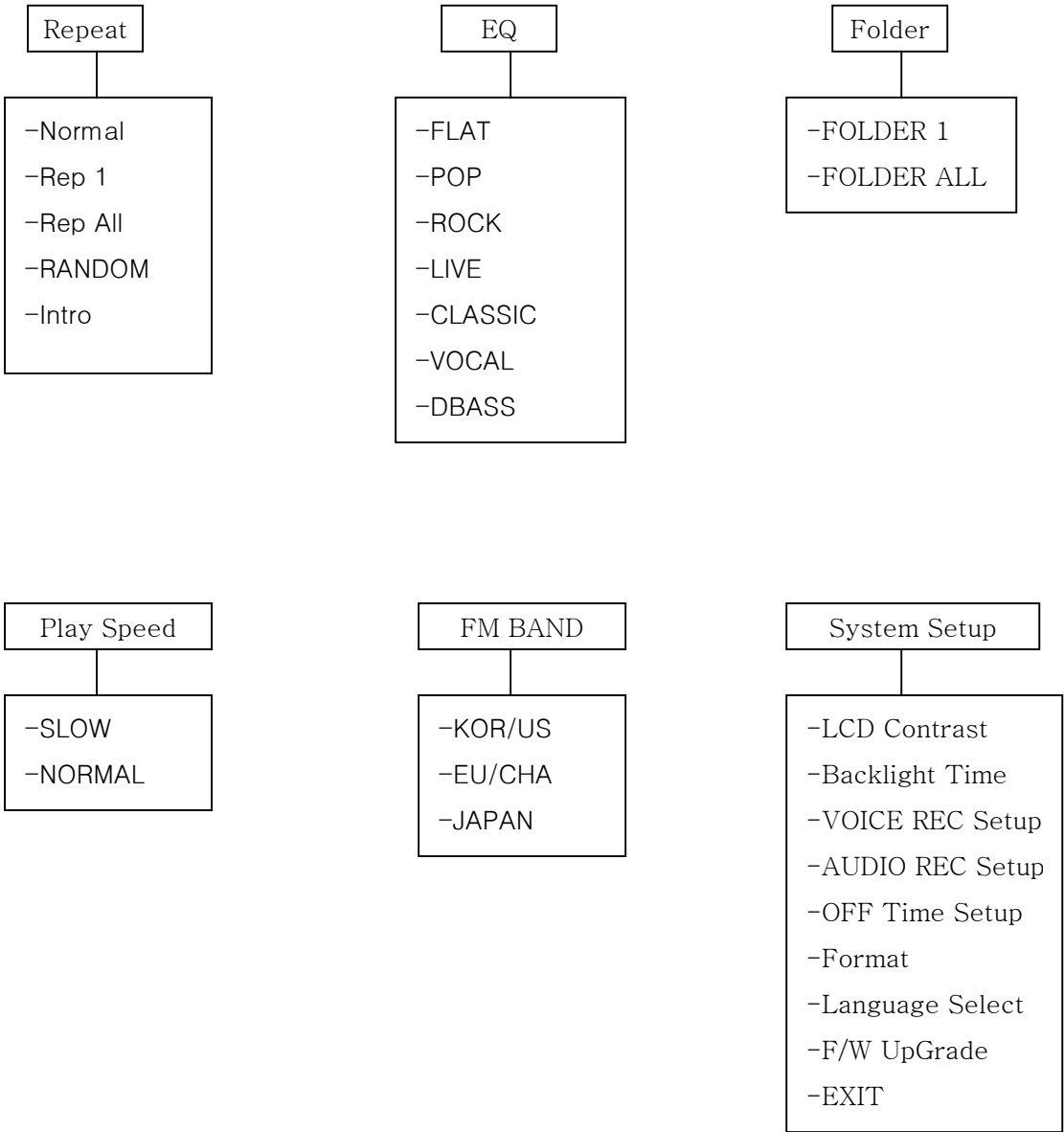
All files can be stored in folders for easier access and organization.



(Button Table)

Function Key	Operation	Activation
▶/■ (Play/Stop)	Click	If the music files selected, play the selected music file If the folder is selected, move to the selected folder Move to the MENU Mode
	Long Click	Power OFF
Volume +/-	Click	Move up/down and select the desired folder or song
FF	Click	Move to the selected folder, if the file is selected
REW	Click	Move to the upper folder
AB/REC	Click	Set up the block repeat mode Stop the block repeat mode
	Long Click	Delete the selected folder or file
Power On (MODE SW)	Click	Select the mode (Play → FM → Line - in)
	Long Click	Move to the MENU mode

-MENU Structure



- **Software Installation**

- 1) For Windows 98/SE

The software should be installed before using the product. For Firmware Upgrade, install Upgrade program after installing Windows 98/SE driver.

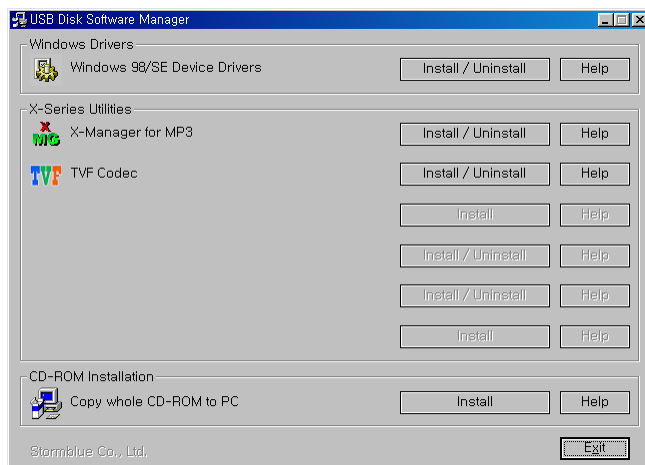
- 2) For Windows 2000/ME/XP

The software only needs to be installed for format the player

-Installing Software to PC

- Insert the provided CD in the CD-ROM of PC and follow the below instructions. Below screen will be appear.

If it does not run automatically, run “Setup.exe” file from the install CD



[Manager program]

* For Windows 98/SE

In Windows 98/SE, USB MP3 Disk cannot be recognized in the PC without USB Drive installation.
(How to Install)

- Click Install/uninstall button from ‘Windows 98/SE USB Drive installation from the manager program. (Cannot be installed in Windows ME/2000/XP)

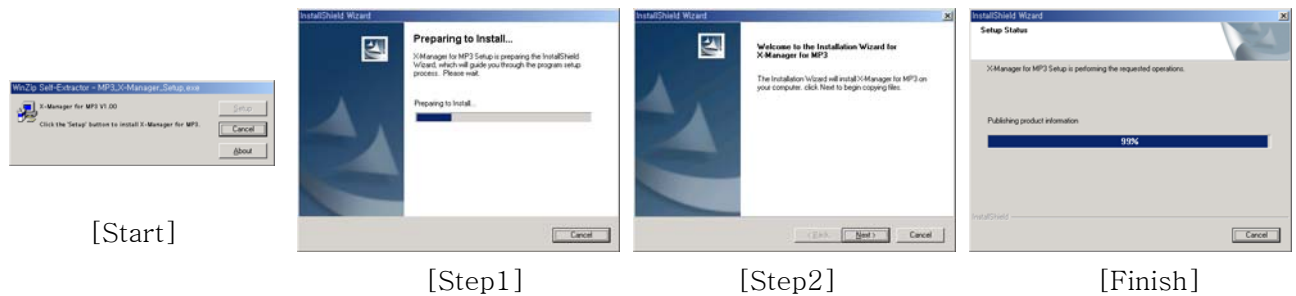
- How to use Manager Program

* X-Manager for MP3

- This is an exclusive program to upgrade the newest firmware and the font for MP3 Player.

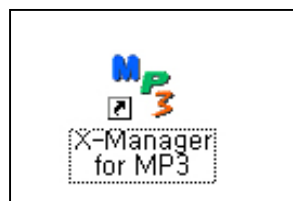
You may install this program with the sequence as follows.

-Click Install/uninstall from 'X-Manager for MP3' from the manager program.

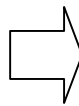


(Upgrade Firmware)

1. When the installation is finished, 'X-Manager for MP3' icon is created in the Window and the following program appears.



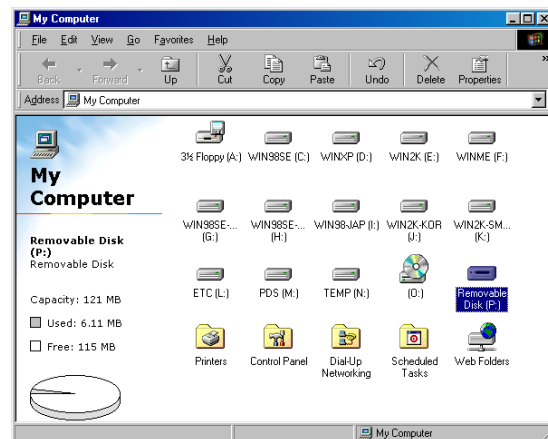
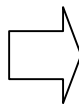
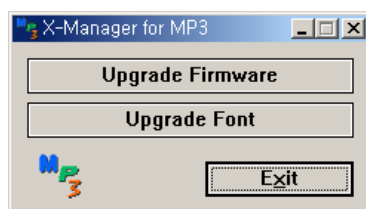
[ICON]



[X-Manager Program]

2. The newest Firmware / Font Data download is available from the web-site (www.stormblue.co.kr).

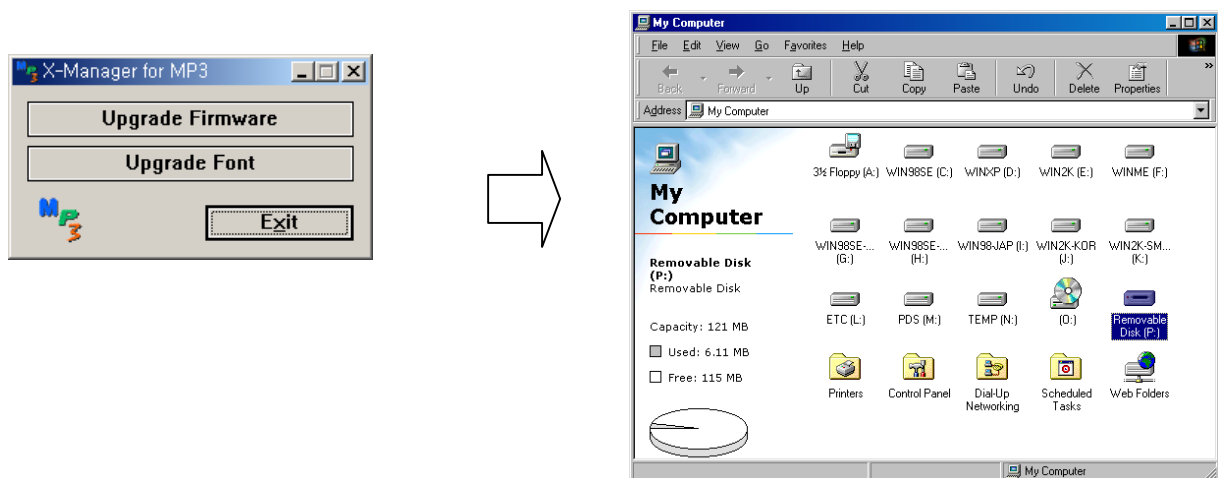
3. ① Firmware download : Click 'Upgrade Firmware' button and download the upgrade file to a folder you want.



*Warning) During the upgrade work, do not disconnect or execute other programs on the same PC.

If so, fatal errors may occur in the PC or product.

②Font Upgrade: For font upgrading, click 'Upgrade Font' button and download the upgrade file to a folder you want.



- **Connect to PC & File Download/Upload**

- Connecting to PC

(Notice)

Turn the player on before connecting to PC.

If so not, the PC cannot recognize the player as the removable disk.

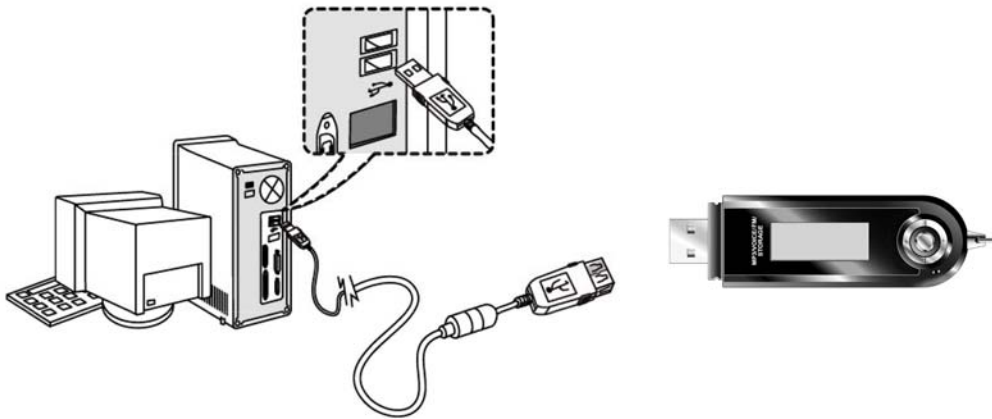
Earphone should be inserted into the Player when the player is connected to PC.

1.Connecting the player to a PC directly

Open the cap of the player and connect the USB Port to the USB Port on PC.

2. Connecting the player to a PC using a USB Cable

Connect one end of the provided USB Cable to one of the USB Port on the PC, and connect the other end of the player.

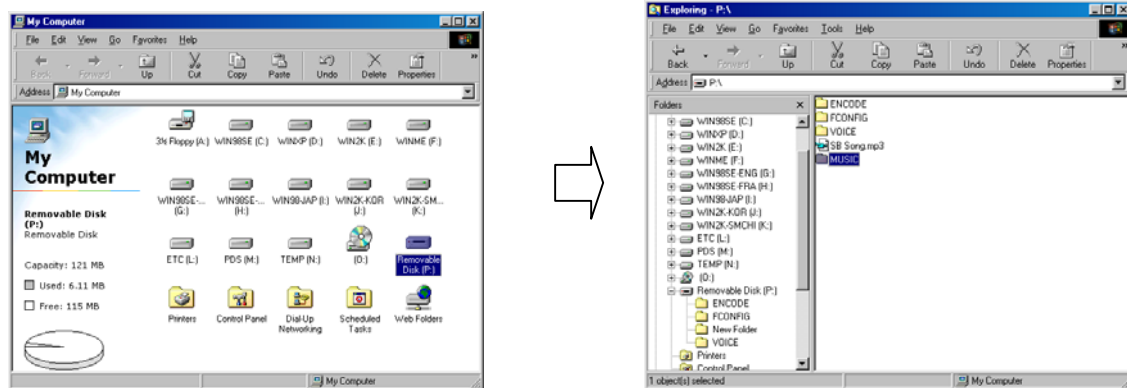


- File Download / Upload

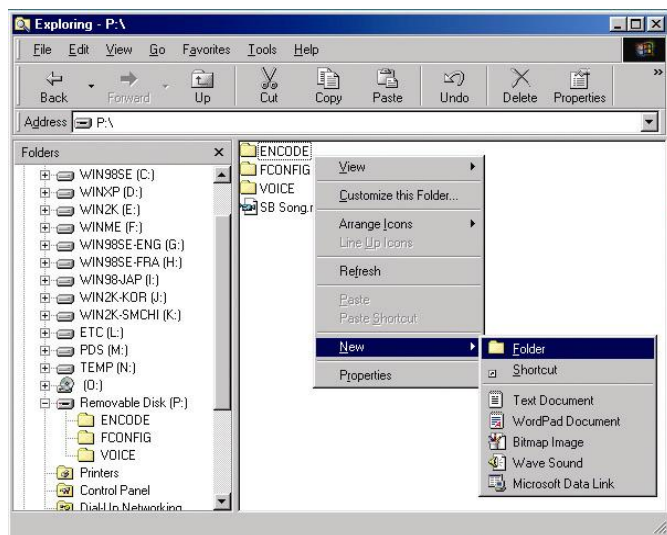
Turn the player on and connect to PC. The Player supports PLUG & PLAY. The product will be automatically recognized as removable disk on.

* Making new folder on the player

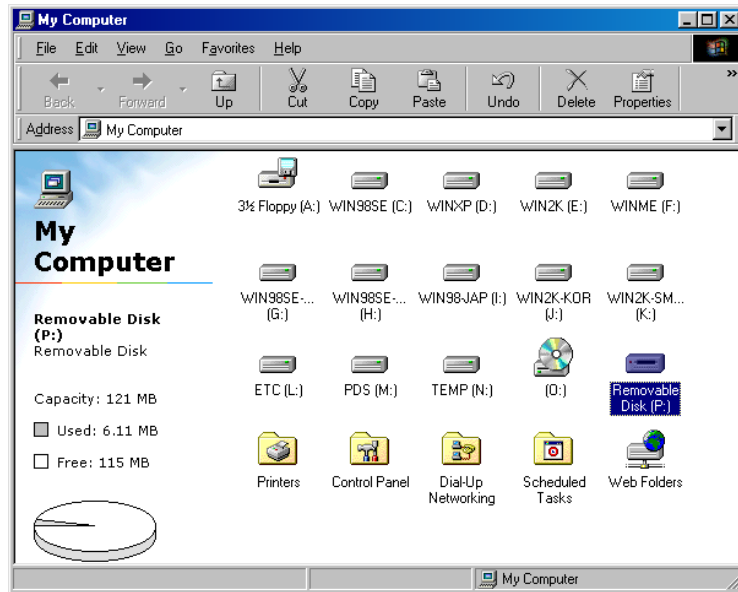
1. Open Windows Explorer and select the removable disk.



2. Select the new folder with Right click on mouse.

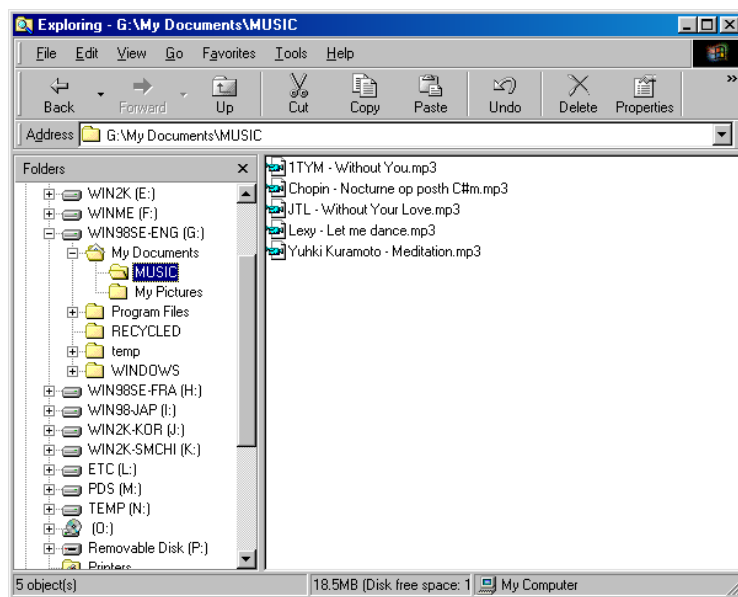


3. New folder is created. Try the desired name in the new folder.

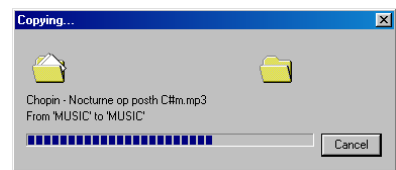
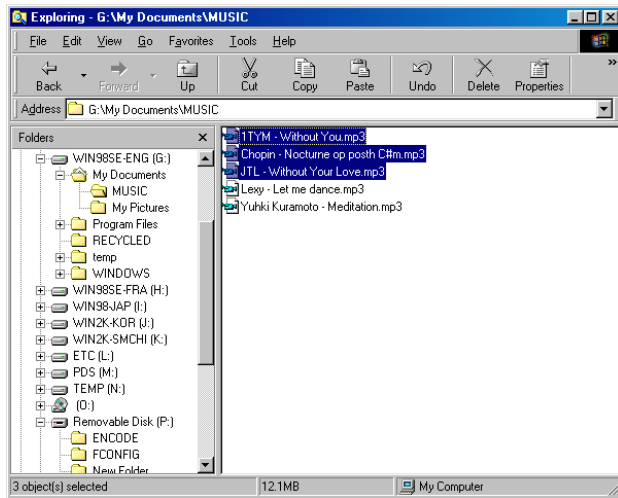


*** Downloading the files or folders from PC to the player**

1. Select the files or folders on the PC to transfer to the player.

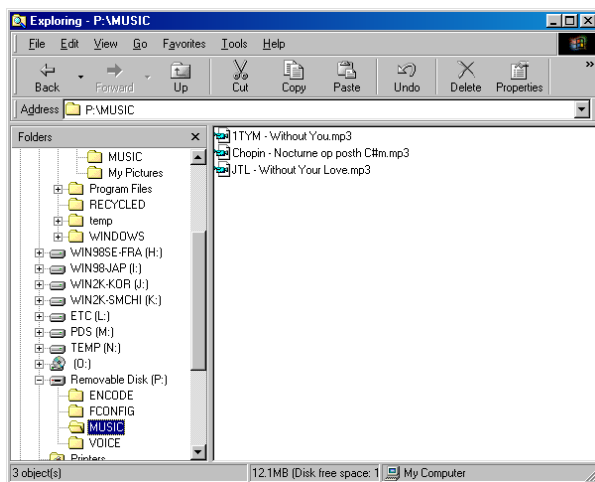


2. Select the desired folders or files on the player.



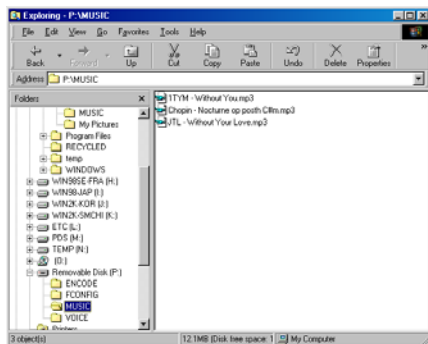
Transferring

3. Download is completed to the player.

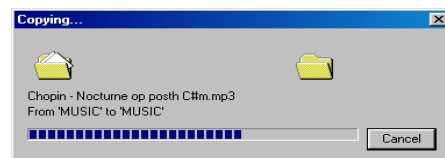
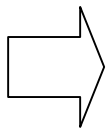
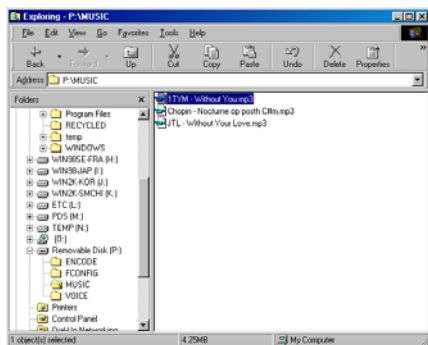


***Deleting the files or folders on the player**

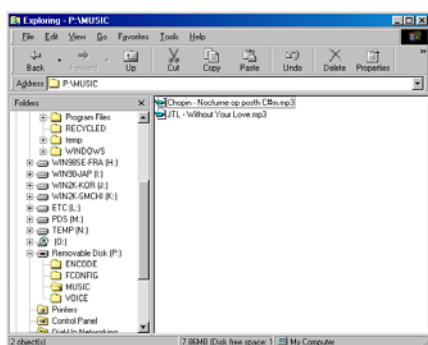
1. Select the files to delete.



2. Select “DELETE” from MENU mode. A warning message “Are you sure?” is displayed on the LCD. Choose “YES” to delete.



3. Deleted is completed.



-Formatting

Move to the Windows Explorer and select the removable disk to click file formatting.

Note: Format will delete all files in the player. Back-up the important data before formatting and

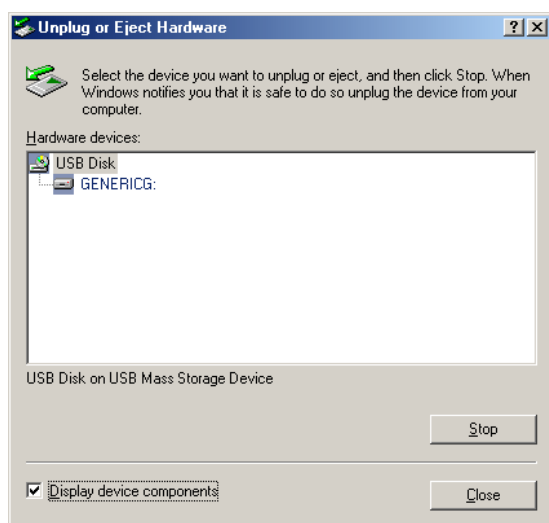
format with only FAT16 region. FAT32 is not supported.

-Disconnecting from the PC

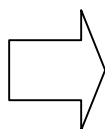
Before disconnecting the player from the PC, double click on the green arrow icon the toolbar located at the bottom right of the screen.



Click on the stop USB Mass Storage Device. ,



When the dialogue box “ Safe Removable of the hardware” displayed on LCD, click “OK” to disconnect the player from PC.



*NOTE: Fatal error may occur in the PC or the player if the player is removed during the above procedures.

<Function>

- Basic Operation

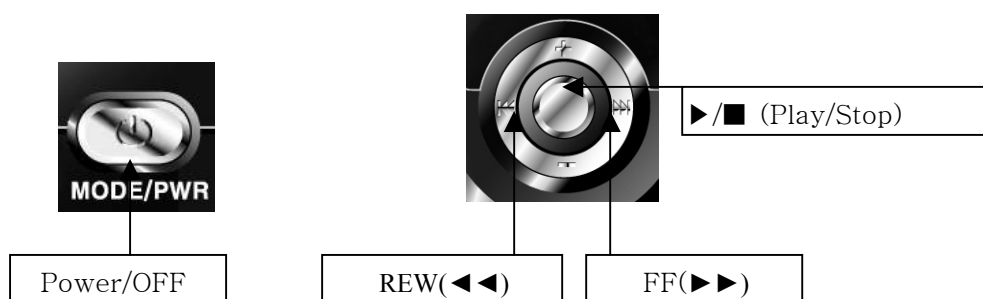
1. Power On/Off

- Press Power ON/OFF (MODE SW) button over 1 second will turn the power on. Press the same button again over 1 second will turn the power off.

* NOTE: The power will turn off automatically if there is no action in Stop mode within the configured Auto Off time

2. Music Playing

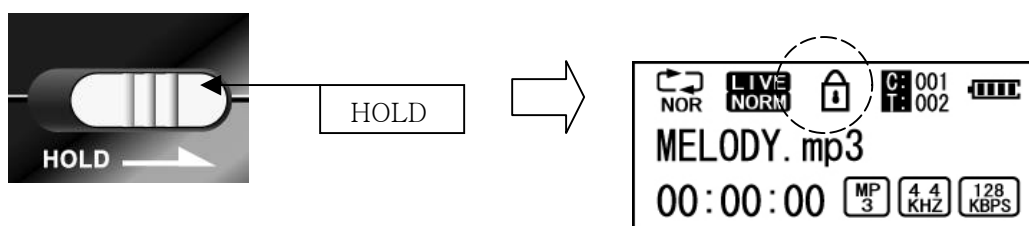
- Press ►/■ (Play/Stop) button and select Play mode at the main Menu to play Audio File. Press the same button for Pause function. Moving forward or backward the file, use the jog key to FF(►►) or REW(◄◄) shortly.



2. Configuring the lock function

The function disables all the product's buttons to avoid unintentional button operation.

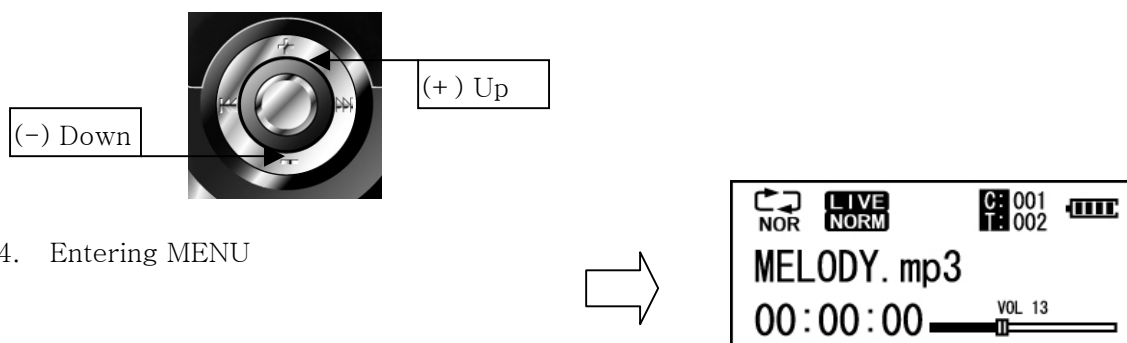
Hold is set with a padlock icon displaying for 3 second on the LCD



3. Volume Control

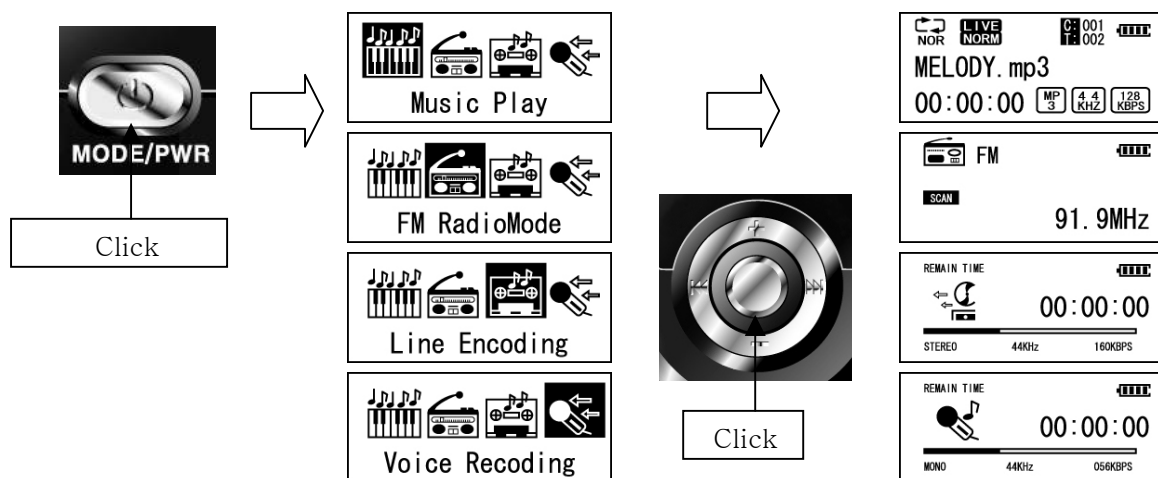
Use the jog key to ◄◄ or ►► to increase or decrease the volume level.

(31 Steps from 0 to 30 are available)

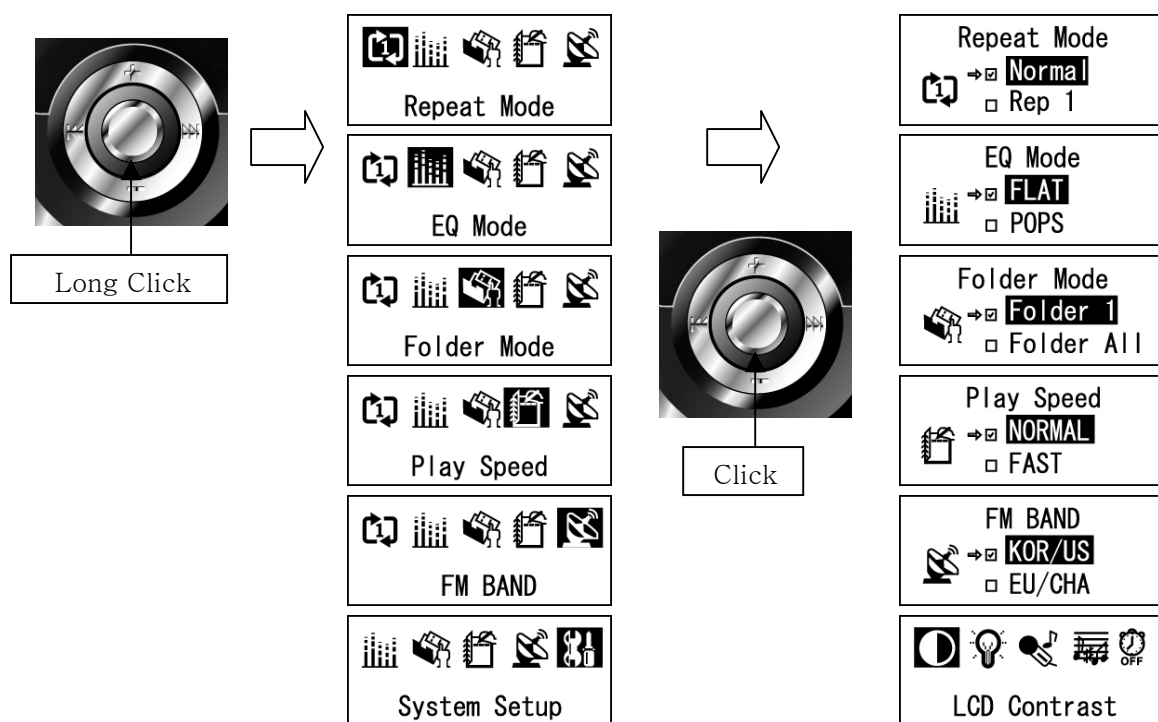


4. Entering MENU

- Press Power ON (MODE SW) button shortly to enter the MODE (Play, FM, Encoding, Voice Recording)



- Press and hold the ►/■ (Play/Stop) button and move to Setup Menu.

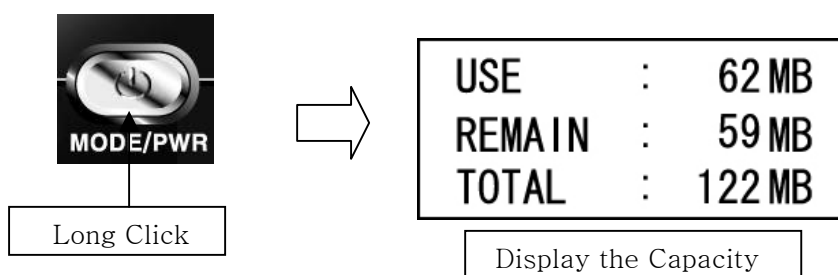


- **Play Mode**

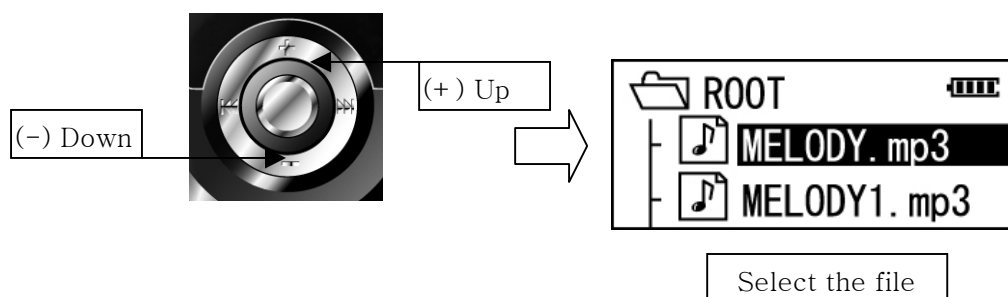
-Listening MP3 File

1. Press and hold the Power ON (MODE SW) button to turn the player on.

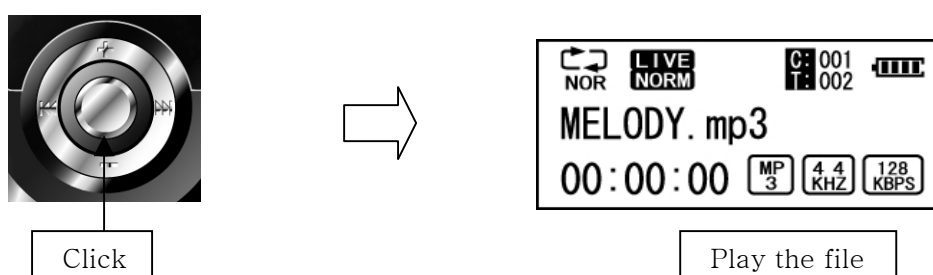
* NOTE: The capacity will be displayed as shown below. The player will be started at the last position.



2. Select the desired file to listen by using the jog key to ◀◀ or ▶▶



3. Press the ▶/■ (Play/Stop) button and the selected file will be played.



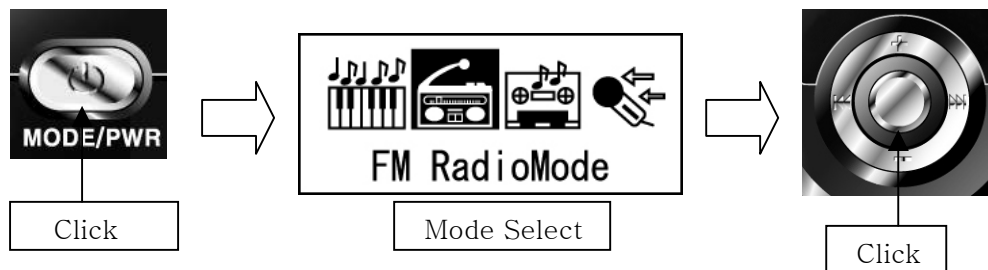
4. Key Function in the play mode

Key	Press length	Activation
▶/■ (Play/Stop)	Briefly	⏸ Pause the playing file and move to Navigation Mode
	Over 1 Sec	⏸ Move to MENU Mode
Volume + / -	Briefly	🔊 Increase or decrease the volume level step by step
	Over 1 Sec	🔊 Increase or decrease the volume level faster
FF	Briefly	⏭ Move to the next file
	Over 1 Sec	⏭ Fast Forward
REW	Briefly	⏮ Move to the previous file
	Over 1 Sec	⏮ Fast Rewind
AB/REC	Briefly	⏮ Set up the block repeat mode
		⏮ Stop the block repeat mode
		⏮ Repeatedly play only the setting block
Power ON (MODE SW)	Briefly	⏮ Select the desired Mode
		(PLAY→ FM →Line-in Encoding→ Voice Recording)
	Over 1 Sec	⏻ Power OFF

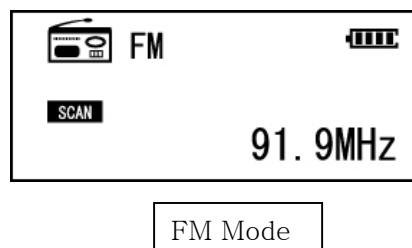
FM Radio Mode

NOTE: Earphone should be inserted into the Player to receive FM frequency since the earphone works as an antenna

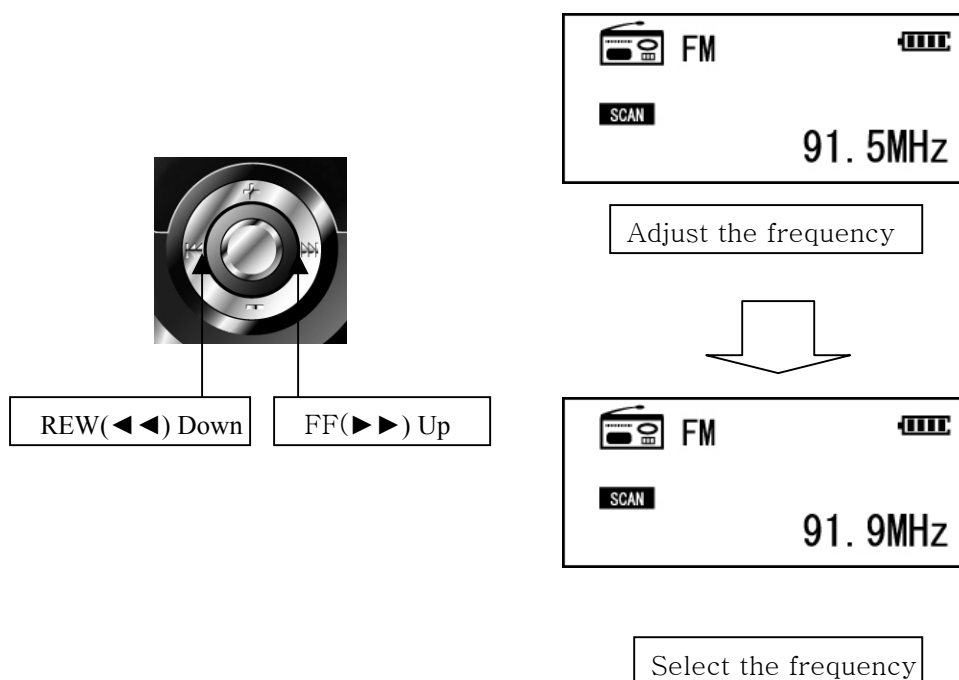
1. Press the Power ON/OFF (MODE SW) button to select FM Mode.



2. FM frequency is displayed as below.



3. Use the jog key to ◀◀ or ▶▶ to search the desired channel.



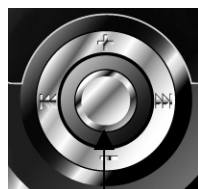
4. Key Function in FM Mode

Key	Press length	Mode	Activation
▶/■ (Play/Stop)	Short		☞ Select the SCAN Mode/ PRESET Mode
		Record	☞ Pause the current FM recording
	Long		☞ Move to MENU Mode
Volume +/-	Short		☞ Increase or Decrease the Volume level
	Long		☞ Increase or Decrease the Volume level faster
FF	Short	SCAN	☞ Increase the frequency one by one
		SAVE	☞ Save the selected channels
		PRESET	☞ Save the selected channels from PRESET 01 to 20
	Long	SCAN	☞ Search the next channel automatically
REW	Short	SCAN	☞ Decrease the frequency one by one
		SAVE	☞ Save the selected channel
		PRESET	☞ Save the selected channels from PRESET 20 to 01
	Long	SCAN	☞ Search the previous channel automatically
AB/REC	Short	SCAN	☞ Save the selected channel
		Save	☞ Save the selected channels with the Memory number
		녹음	☞ Pause the current FM recording
	Long		☞ Record FM Radio
Power ON (MODE SW)	Short		☞ Select the mode (Play→FM→Line-in→Voice)
	Long		☞ Power OFF

-Playing Voice and recorded FM file

(Playing Voice file)

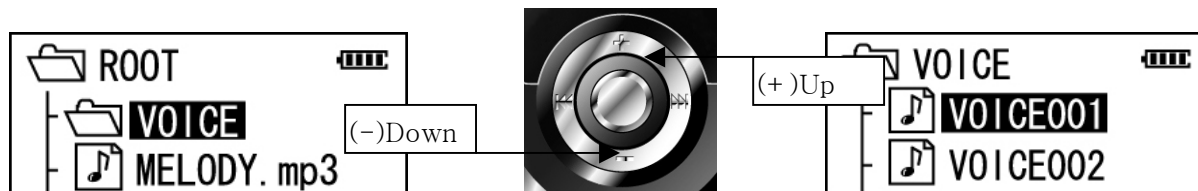
1. Press the ►/■ (Play/Stop) button to stop the current operation.



Click

2. Move to the VOICE folder and select the file to listen by using the Volume(+/-) jog key.

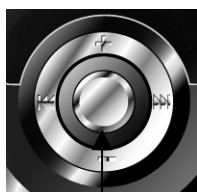
Note: The recorded file is stored as “VOICE001” “VOICE002” in the Voice folder.



3. Press the ►/■ (Play/Stop) button and play the recorded file.

(Listen to the recorded FM Radio file)

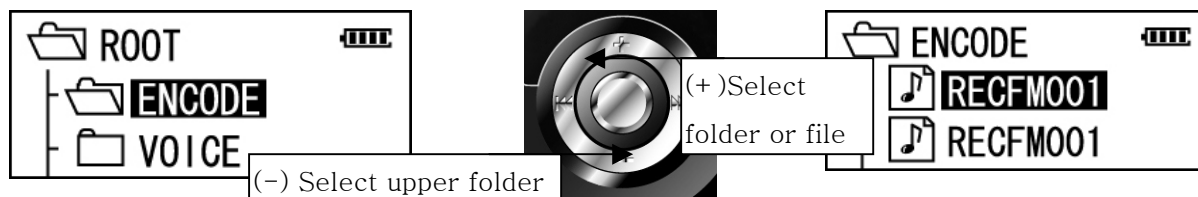
1. Press the ►/■ (Play/Stop) button to stop the current operation.



Click

2. Move to the ENCODE folder and select the file to listen with Volume(+/-) jog.

Note: The recorded file is stored as “RECFM001.MP3” “RECFM002.MP3” in the ENCODE folder.



3. Press the ►/■ (Play/Stop) button and listen the recorded FM Radio file.

- **Recording**

-Voice Recording

1. Press the Power ON (MODE SW) button.



Click

2. Select Voice Recording Mode by using the jog key to ◀◀ or ▶▶

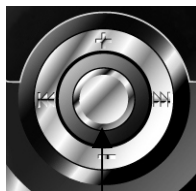


REW(◀◀)

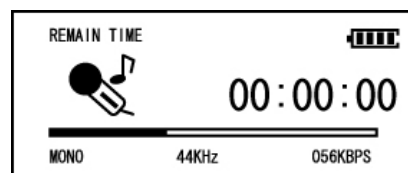
FF(▶▶)



3. Press the ▶/■ (Play/Stop) button and move to Recording Mode.



Click



4. Press the AB/REC button and voice recording starts.

NOTE: Press the AB/REC button to pause the recording process.

Press the AB/REC button again to restart recording.

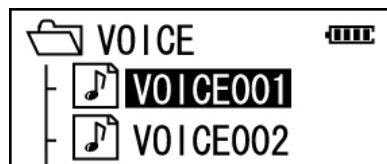


Click



5. Press the ►/■ (Play/Stop) button to stop recording.

(The recorded file is stored as “VOICE001” “VOICE002” in the VOICE folder)



-Line-in Recording

1. Connect LINE OUT jack of the external audio source and the Line-IN jack of the player with a audio cable as below.

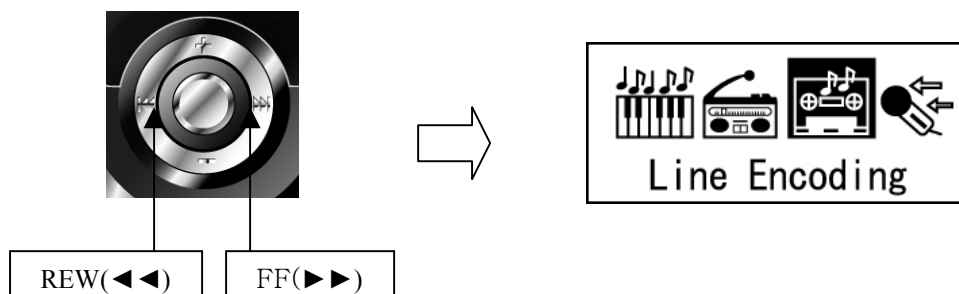


2. Press the Power ON (MODE SW) button.

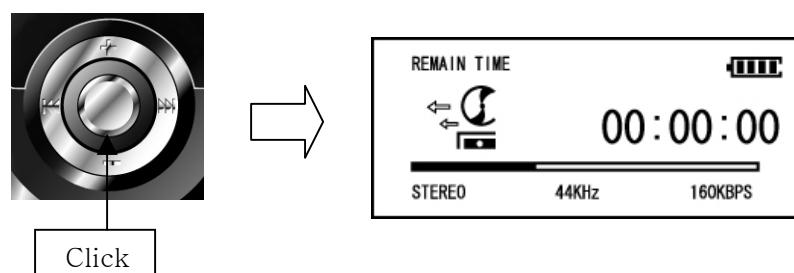


Click

3. Select Line encoding mode by using the jog key to ◀◀ or ▶▶



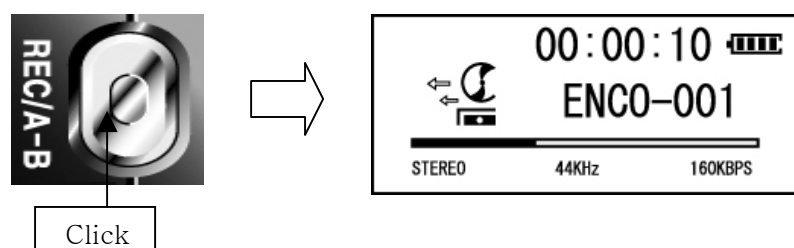
4. Press the ►/■ (Play/Stop) button and enter Line Encoding mode.



5. Press the AB/REC button and voice recording starts.

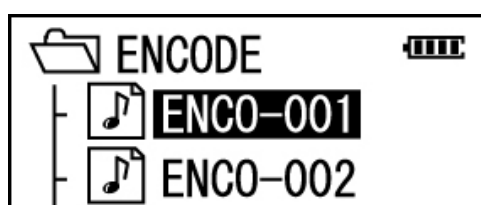
*NOTE: Press the AB/REC button to pause the recording process.

Press the AB/REC button again to restart recording.

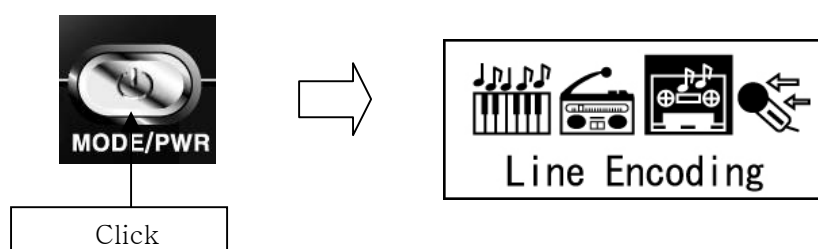


6. Press the ►/■ (Play/Stop) button to stop recording.

(The recorded file is stored as "ENCO-001" "ENCO-002" in the ENCODE folder)



7. To play or move to the previous mode, press the Power ON (Menu SW) button. The below screen will be displayed.



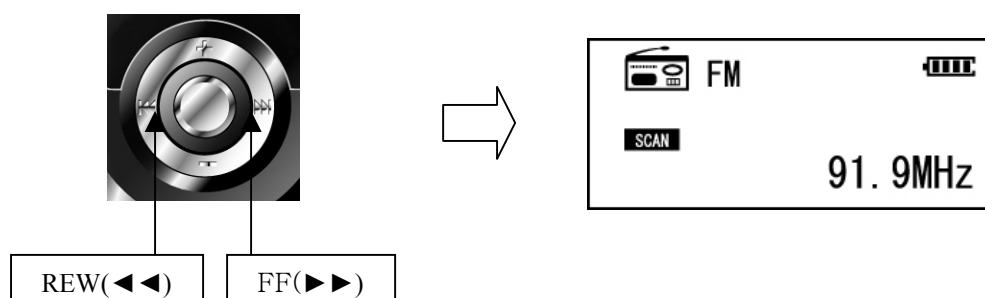
- **FM Radio Mode (Listening & Recording)**

*Press the Menu SW (Jog SW) and select the scan or preset mode.

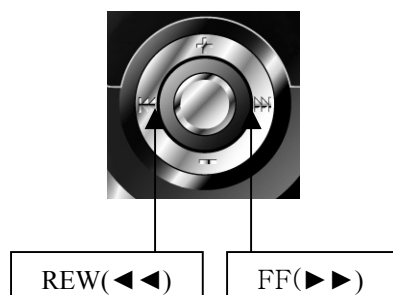
NOTE: Earphone should be inserted into the Player to receive FM frequency since the earphone works as an antenna

-Turn to the desired frequency

Use the jog key to and search the desired frequency.



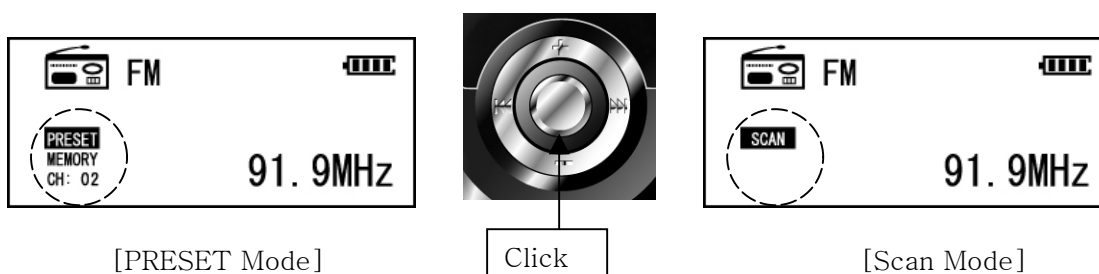
Auto Scan function: Press and hold the jog key to ◀◀ or ▶▶. The nearest channel is automatically sought.



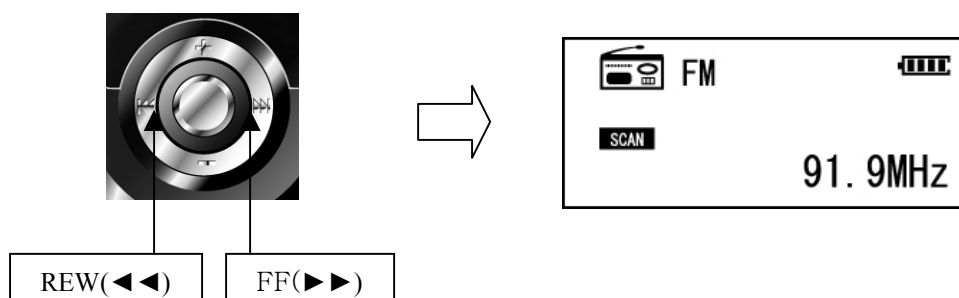
-Save FM Channels

1. Press the Menu button and select the scan mode.

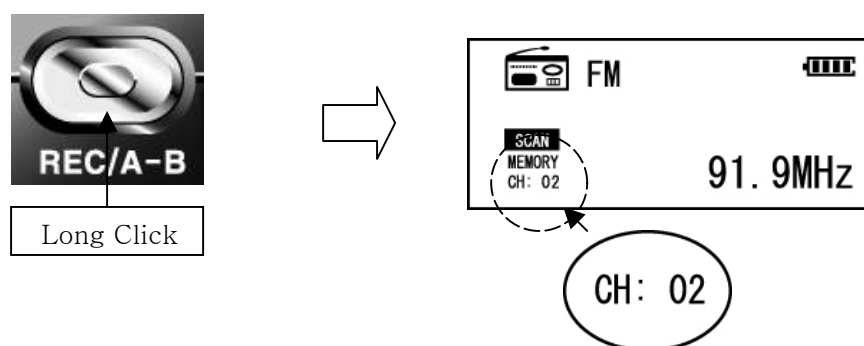
(Saving FM channel is not available in the Preset Mode.)



2. Use the jog key to ◀◀ or ▶▶ to select the channel.



3. Press and hold the A-B button for 1 to 2 seconds. *CH is displayed on the LCD as below.



4. Select the desired CH by using the jog key to ◀◀ or ▶▶.

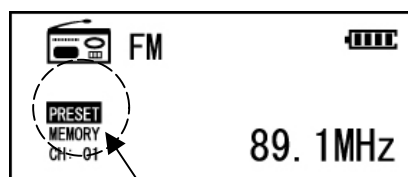
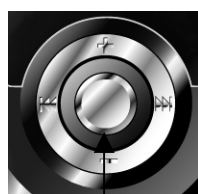
Press and hold the REC/A-B button to store the selected channel.



NOTE) This function may not work within weak transmission areas.

– Change PRESET channels

1. Press the Menu button and select the Preset mode.



2. The saved channels are displayed as shown below by using the jog key to ◀◀ or ▶▶.

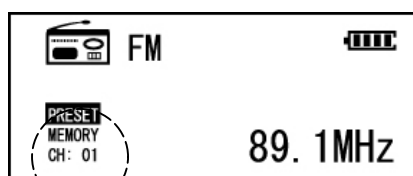
Click

PRESET

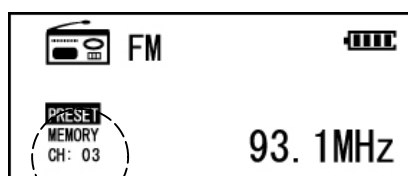


REW(◀◀)

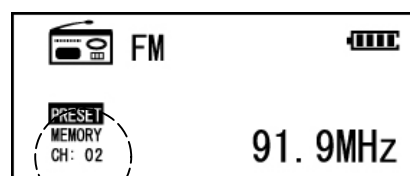
FF(▶▶)



CH: 01



CH: 02



CH: 03

-Record FM Radio

1. Press the Power ON (MODE SW).



Short Click

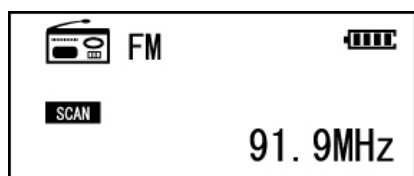
2. Select FM Radio mode by using the jog key to ◀◀ or ▶▶.



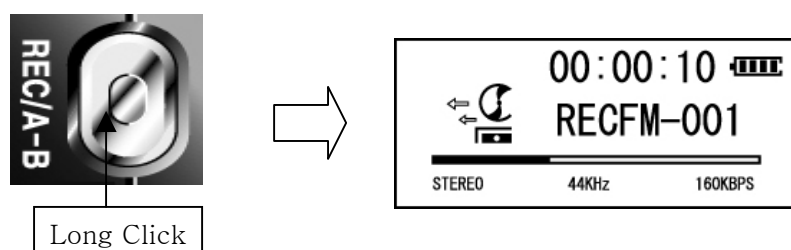
REW(◀◀)

FF(▶▶)

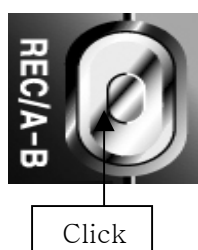
3. Press the ►/■ (Play/Stop) button and select FM RADIO Mode.



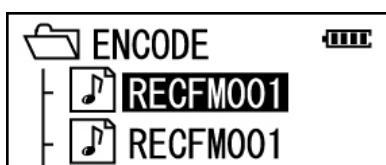
4. Press and hold the AB/REC button and the recording starts.



5. Press the AB/REC button to pause the recording process.
Press the AB/REC button again to restart recording.



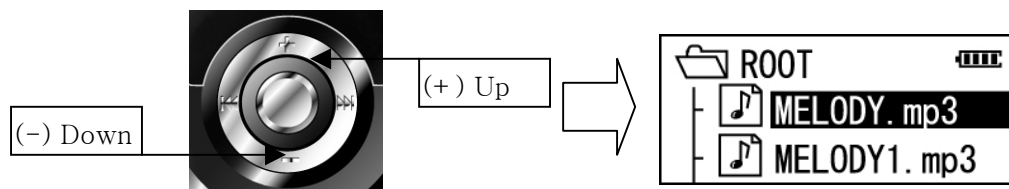
6. Press the ►/■ (Play/Stop) button again to stop recording.
(The recorded file is stored as “RECFM001.MP3” or “RECFM002.MP3” in the ENCODE folder)



- **Delete**

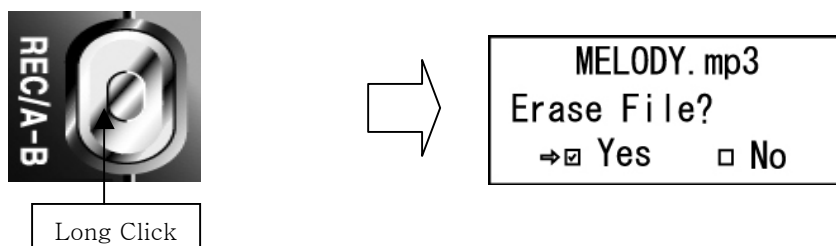
- **Delete Files or Folders of the player**

1. Select the files or folders to delete by using the Volume(+/-) buttons.

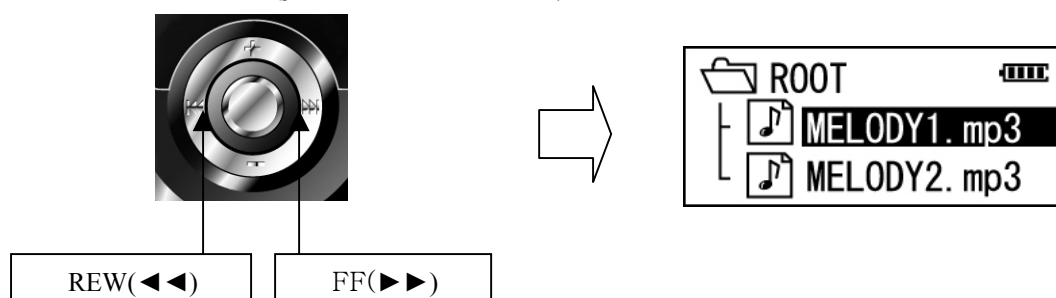


2. Press and hold the AB/REC button to delete.

"Erase?" is displayed on the LCD.



3. Use the jog key to ◀◀ or ▶▶ to select "Yes" and press the Power ON (Menu SW) button to delete the selected file or folder.

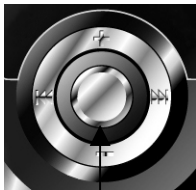


Notice) All music or voice files in the folder will be deleted. But if the text or other files exist there, the folder is not deleted.

<Additional Function>

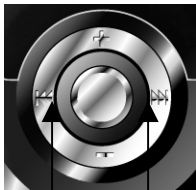
-REPEAT Mode

1. Press and hold the ►/■ (Play/Stop) button.



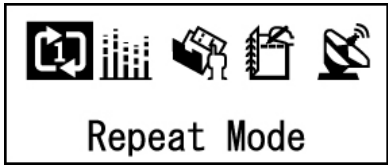
Long Click

2. Use the jog key to ◀◀ or ▶▶ to select the Repeat Mode.

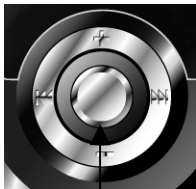


REW(◀◀)

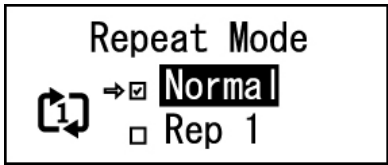
FF(▶▶)



3. Press the ►/■ (Play/Stop) button to select the Repeat Mode.



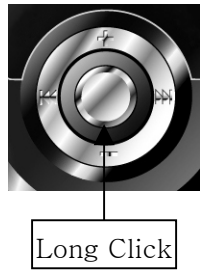
Click



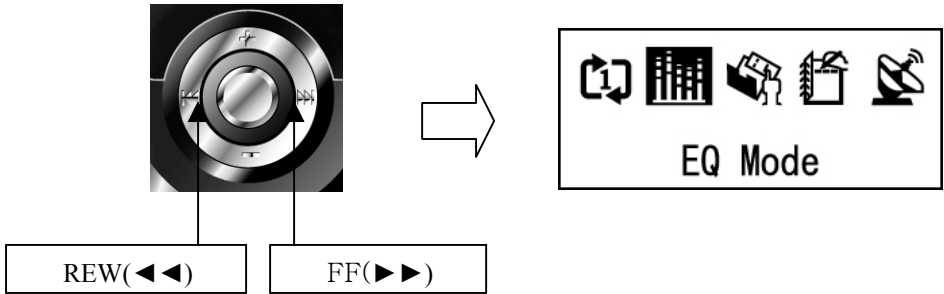
Repeat Mode	Select the desired Repeat Mode.		
	Normal		Plays all files once sequentially.
	Rep 1		Plays the selected file repeatedly.
	Rep All		Plays all stored files repeatedly.
	RANDOM		Randomly play all files in the Player repeatedly.
	Intro		Plays only the intros of all files sequentially.

-Select EQ

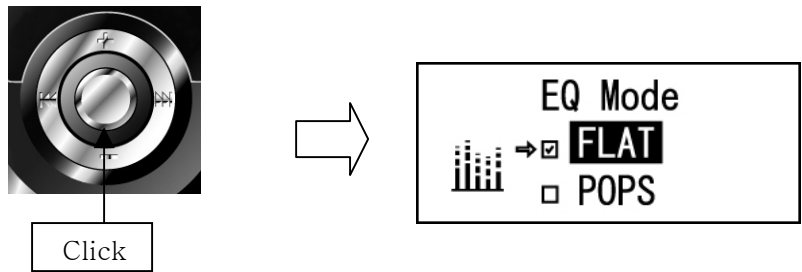
1. Press and hold the ►/■ (Play/Stop) button.



2. Use the jog key to ◀◀ or ▶▶ to enter the EQ Mode.



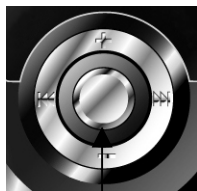
3. Press the ►/■ (Play/Stop) button to select the EQ type.



EQ Mode	Select the desired EQ type	
	FLAT	Play the music file with Flat Mode
	POPS	Play the music file with Pop Mode
	ROCK	Play the music file with Rock Mode
	LIVE	Play the music file with Live Mode
	CLAS	Play the music file with Classic Mode
	VOCA	Play the music file with Vocal Mode
	DBAS	Play the music file with DBass Mode

-Folder Mode

1. Press and hold the ►/■ (Play/Stop) button.



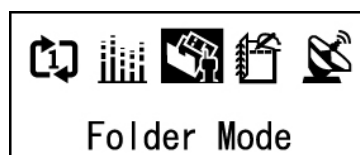
Long Click

2. Use the jog key to ◀◀ or ▶▶ to enter the Folder mode.

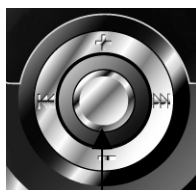


REW(◀◀)

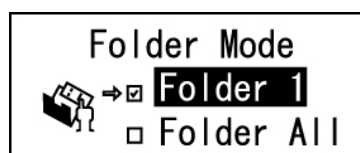
FF(▶▶)



3. Press the ►/■ (Play/Stop) button to select the folder mode type.

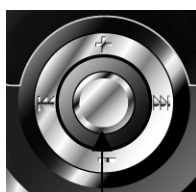


Click



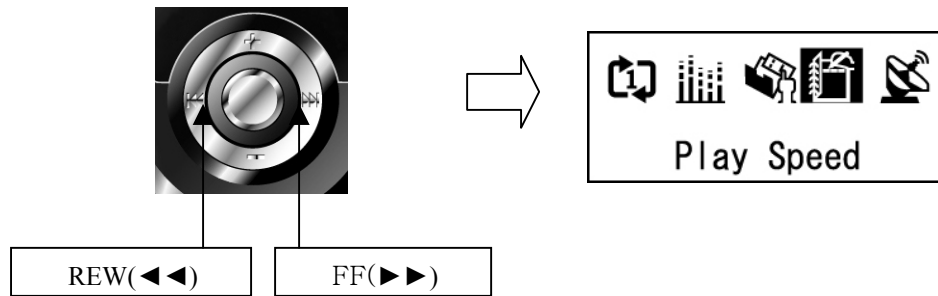
-Play Speed

1. Press and hold the ►/■ (Play/Stop) button.

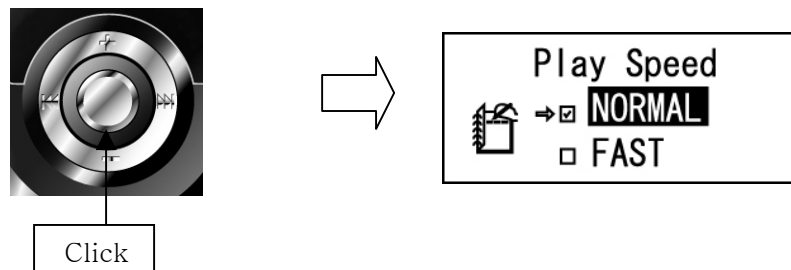


Long Click

2. Use the jog key to ◀◀ or ▶▶ to enter the Play Speed Mode.

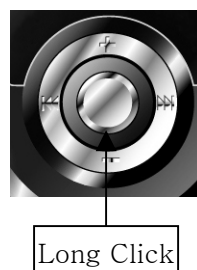


3. Press the ▶/■ (Play/Stop) button and select the Play Speed type.

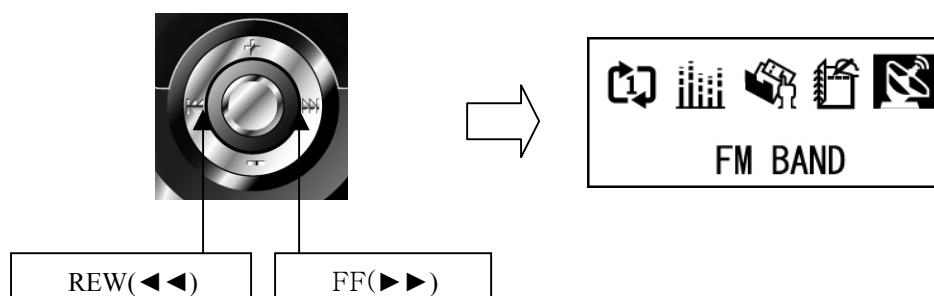


-FM BAND Setting

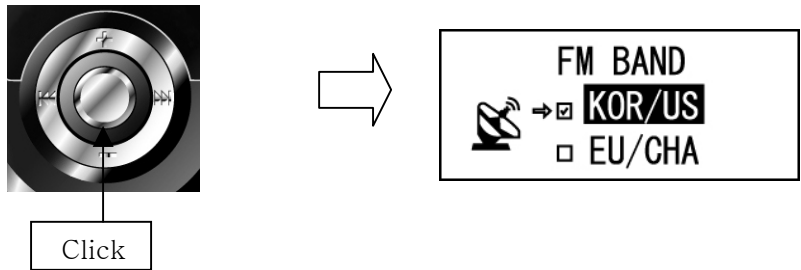
1. Press and hold the ▶/■ (Play/Stop) button.



2. Use the jog key to ◀◀ or ▶▶ to enter the FM BAND Mode.



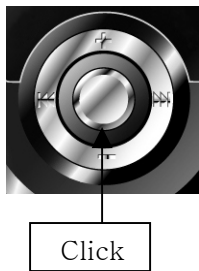
3. Press the ►/■ (Play/Stop) button and select the suitable FM Band type.



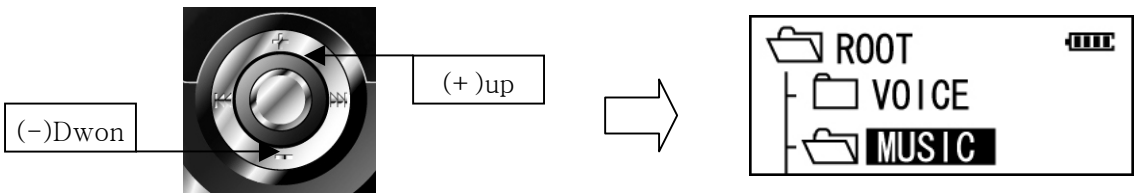
KOR/US	Korea, USA and others (87.5MHz~108MHz)
EU/CHA	Europe
JPN	Japan (76MHz~90MHz)

-Navigation Mode

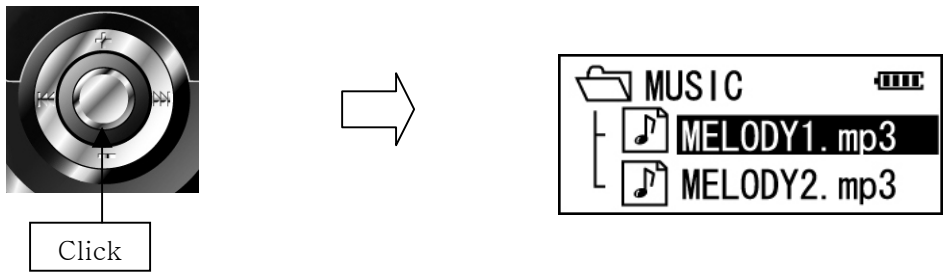
1. Press the ►/■ (Play/Stop) button to stop the current operation.



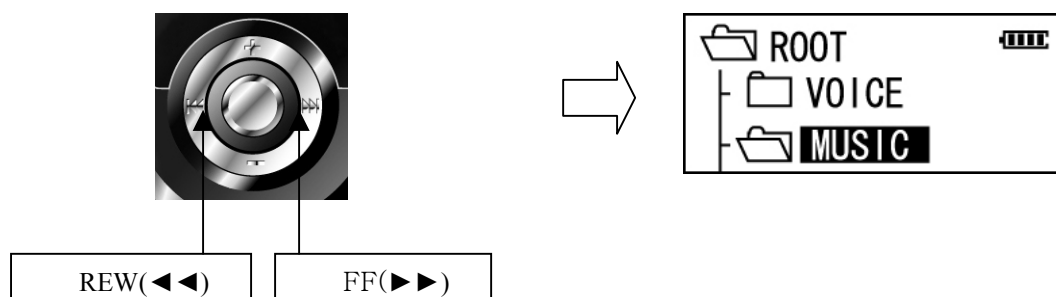
2. Select the desired folder by using the Volume(+/-) buttons.



3. Press the ►/■ (Play/Stop) button and listen the selected song.



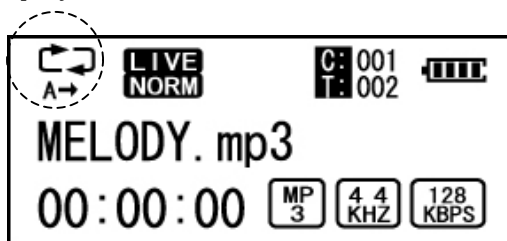
4. Move to the upper or sub folder by using the jog key to ◀◀ or ▶▶



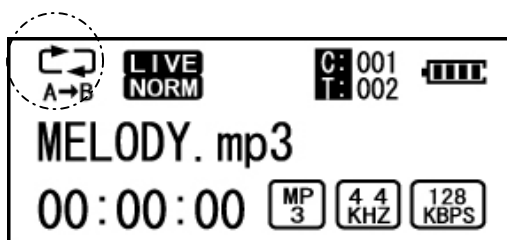
-Repeat A-B Mode

Play a particular section of the current file repeatedly.

1. Press the AB/REC button at the beginning position of the block to be repeated. The “A” icon is displayed as shown below.

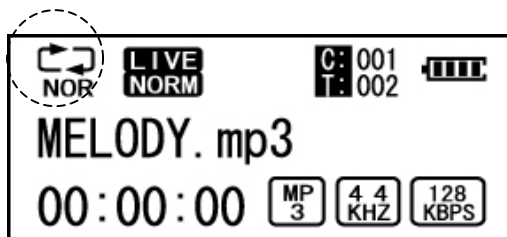


2. Press the AB/REC button again at the ending position of the repeat block, and the icon changes as shown below.



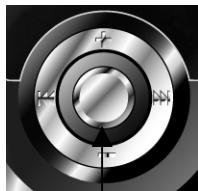
* A-B block is played repeatedly.

3. To disable this function, press the AB/REC button once again.



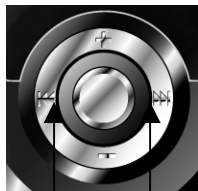
- **System Setup**

1. Press and hold the ►/■ (Play/Stop) button.



Long klik

2. Select the System Setup Mode by using the jog key to ◀◀ or ▶▶



REW(◀◀)


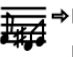


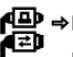
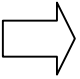




FF(▶▶)

3. Press the ►/■ (Play/Stop) button and choose the Mode to change.



Click

Backlight Time	Set the time for which the backlight is turned on	
<div> <div>Backlight Time</div> <div> → <input checked="" type="checkbox"/> 5 Sec <input type="checkbox"/> 10 Sec ON </div> </div>	Backlight control has five mode	
	5 Sec	Backlight is turned on for 5 Seconds
	10 Sec	Backlight is turned on for 10 Seconds
	20 Sec	Backlight is turned on for 20 Seconds
	Always On	Backlight is always turned on
	Always Off	Backlight is always turned off

<div>VOICE REC Setup</div> <div>  <input checked="" type="checkbox"/> 6K/TVF <input type="checkbox"/> 56K/MP3 </div>	Set the transmission rate of the recorded voice files - 6Ks/TVF, 56K/MP3, 64K/MP3, 80K/MP3, 96K/MP3, 112K/MP3, 128K/MP3										
<div>AUDIO REC Setup</div> <div>  <input checked="" type="checkbox"/> 128KBps <input type="checkbox"/> 160KBps </div>	Set the transmission rate of the recorded file from external audio sources. - 128KBps, 160KBps, 192KBps										
<div>OFF Time Setup</div> <div>  <input checked="" type="checkbox"/> 1 Min OFF <input type="checkbox"/> 2 Min OFF </div>	When the operation is paused or stopped, System turns off power automatically. <table border="1" data-bbox="520 763 1326 1010"> <tr> <td>1 Min OFF</td><td>Turns off power after 1min</td></tr> <tr> <td>2 Min OFF</td><td>Turns off power after 2min</td></tr> <tr> <td>5 Min OFF</td><td>Turns off power after 5min</td></tr> <tr> <td>10 Min OFF</td><td>Turns off power after 10min</td></tr> <tr> <td>Disable</td><td>Does not apply to Auto Power saving</td></tr> </table>	1 Min OFF	Turns off power after 1min	2 Min OFF	Turns off power after 2min	5 Min OFF	Turns off power after 5min	10 Min OFF	Turns off power after 10min	Disable	Does not apply to Auto Power saving
1 Min OFF	Turns off power after 1min										
2 Min OFF	Turns off power after 2min										
5 Min OFF	Turns off power after 5min										
10 Min OFF	Turns off power after 10min										
Disable	Does not apply to Auto Power saving										
<div>Format</div> <div>  <input checked="" type="checkbox"/> NO <input type="checkbox"/> FAST </div>	Format the player. <table border="1" data-bbox="520 1066 1326 1211"> <tr> <td>Fast</td><td>All files in the track will be deleted</td></tr> <tr> <td>Low level</td><td>All memory will be deleted (Including Font Delete)</td></tr> </table> <p>*After Low level format, the Font file should be installed</p>	Fast	All files in the track will be deleted	Low level	All memory will be deleted (Including Font Delete)						
Fast	All files in the track will be deleted										
Low level	All memory will be deleted (Including Font Delete)										
<div>Language Select</div> <div> 한 中 <input checked="" type="checkbox"/> KOREAN A J <input type="checkbox"/> ENGLISH </div>	Select the suitable language for OS										
<div>F/W UpGrade</div> <div>  <input checked="" type="checkbox"/> Yes <input type="checkbox"/> No </div>	Upgrade Firmware or Font file. <div data-bbox="531 1485 1278 1619"> <div> F/W UpGrade MP500 USB Not Connect </div>  <div> F/W UpGrade MP500 USB Connected </div> </div> <div data-bbox="531 1626 1313 1659"> [Before connecting to USB Port] [After connecting to USB] </div> <p>* NOTE: Install the program on the PC before upgrading.</p> <p>Do not remove the Player during upgrading process. If so, fatal errors may occur with the Player.</p>										
<div>   한 中 <input checked="" type="checkbox"/> A J   </div> <div>Exit</div>	Move the upper MENU.										

- **Product Specifications**

Item	Detail	Specification
Mp3/Encoding	Supported Audio Format	MPEG 1/2/2.5 Layer 3, WMA
	Equalizer	POP / ROCK / CLASSIC / VOCAL/LIVE/FLAT/DBASS
FM Tuner	FM Frequency range	76 ~108 MHz
	FM Signal band noise ratio	50dB
	Frequency storage	Preset 20 units
Voice Recorder	Compression Bit Rate	32kbps ~ 224kbps
	Sampling frequency	32KHz / 44.1kHz / 48KHz
	Voice recording	TVF • MP3 Format
Operating system support	Windows	98SE/2000/Me/XP/2003
	Mac	Up V8.6
	Linux	Up Kernel 2.4.18
Power	Rechargeable battery	Li-Polymer 420mA
General	Size	16.8 * 26 * 89 (H x W x L) mm
	Weight	40g
	Type	Plug & Play (USB Flash Disk type)
	Operational Conditions	0℃ ~ 45℃
	Basic Memory	128MB, 256MB, 512MB
	PC interface	USB 1.1
	Playing time	Upper 11 hours
	File transmission speed	MAX 500Kbyte/sec (At device format)
	Earphone Output	44mW(22mW+ 22mW)
	LCD	Full Graphic LCD Blue EL Backlight

- **Troubleshooting**

- Check the following list before requesting A/S.

The Player does not power on	<ul style="list-style-type: none"> - Lock is in the HOLD position? (Release the hold) - The batteries are exhausted? (Recharge the batteries)
No sound is heard from player or distortion is heard during playback	<ul style="list-style-type: none"> - Check whether VOLUME is set to "0" . - Make sure that there are MP3 files in the memory - Check whether plug is dirty. - Corrupted MP3 or WMA files may make a static noise and the sound may cut off. Try with other files.
Characters on LCD are abnormal	Check the language is setting to "English" in MENU
FM Radio does not work	<ul style="list-style-type: none"> - Adjust the position of the player and earphones. (The earphones works as antenna, they must plugged in for best reception) - Turn off the power of other electric devices near the player.
Failed download	<ul style="list-style-type: none"> - Make sure the USB Cable is connected properly. - Check the condition of the battery.
Memory is full and the player works abnormally or does not play	<ul style="list-style-type: none"> - Initialize the player and leave a free space.

● **Product Warranty**

1. This product has been manufactured under strict quality and control inspections.
2. If the product breaks down during normal usage, our dealer/or service center will fix the product for the period free listed in the warranty as below.
3. A service fee may apply after the warranty period or in case of the following.
 - If the problem was caused by the customer's misuse.
 - If any internal modification was done by the customer.
4. We do not reissue warranty certificate. Please store it in a safe space.

Product			Model Name	
Customer	Name		Tel	
	Address			
Purchaser	Name		Tel	
	Address			
Date of Purchase	Mo____/Day____/Yr____		Period of Warranty	

* For more warranty information and RMA service, please visit our web-site at <http://www.stormblue.co.kr>

Note:

This equipment has been tested and found to comply with the limits for a class B digital device, pursuant to Part 15 of the FCC Rules.

These limits are designed to provide reasonable protection against harmful interference in a residential installation. This equipment generates, uses and can radiate radio frequency energy and if not installed and used in accordance with the instructions, may cause harmful interference to radio communications. However, there is no guarantee that interference will not occur in a particular installation. If this equipment does cause harmful interference to radio or television reception, which can be determined by turning the equipment off and on, the user is encouraged to try to correct the interference by one or more of the following measures:

- Reorient or relocate the receiving antenna
- Increase the separation between the equipment and receiver
- Connect the equipment into an outlet on a circuit different from that to which the receiver is connected
- Consult the dealer or an experienced radio/TV technician for help.

This device complies with Part 15 of the FCC Rules. Operation is subject to the following two conditions: (1) this device may not cause harmful interference, and (2) this device must accept any interference received, including interference that may cause undesired operation.

****CAUTION: Changes or modifications not expressly approved by the party responsible for compliance could void the user's authority to operate the equipment.**