

Universal Smart Drive (U S D)

1. Introduction

Incredibly easy to transfer and store data from Pc to Pc, Pc to Mac, Mac to Mac and Mac to PC.

Universal Smart Drive is a small and simple plug-n-play mobile flash memory device on the Windows and Mac OS which utilizes a standard USB port.

- operates as a removable hard drive on your computer.
- does not require software drivers*. (for Windows 98, driver installation required)
- allows for the data to be easily transferred across different OS platforms (ie. PC to Mac and vice versa) just by plugging USD into the USB port on your computer.
- contains various memory capacities ranging from 16MB to 1GB.
- has 2 color illumination (red and green) easily to find device status.

2. Features

- No driver (installation software) required* (for Windows 98, driver installation required)
- Hot Plug and Play via USB port on PC and Mac.
- Cross platforms between PC and Mac and vice versa.
- Supports USB 1.1
- Supports OS : Windows98/SE, Windows ME, Windows 2000, Windows XP, Mac 8.6 or higher
- Capacities: 16MB/32MB/64MB/96MB/128MB/256MB/512MB/1GB
- Compact, Light Weight and Durable.
- 2 color illumination to indicate data transferring status
Green : Device connected, Red : Data transferring
- 10-years of data retention.
- Accessories : Extension cable (1M), neck strap, Windows 98 installation CD, user manual and warranty card.

* Installation program is required for Windows 98/SE. This program is supplied with the USD or can be downloaded from our website (www.universalsmartdrive.net).

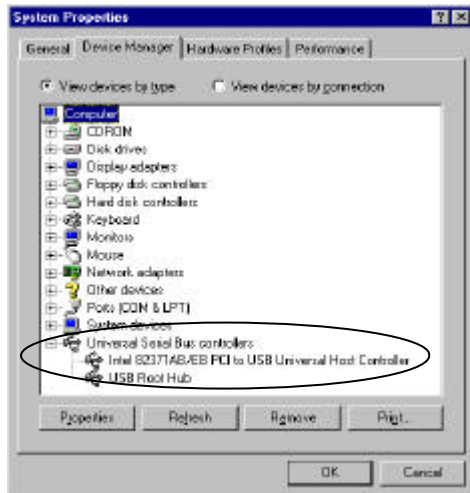
3. System Requirements

IBM PC/AT or compatible Desktop / Notebook / Sub-Notebook / Laptop computers / Mac

(Pentium® @ 100MHz or better) with USB ports.

4. Driver Installation for Windows® 98 Windows® 98 SE

- 4.1 Before installation of the drivers, check first that the USB controller of your computer is working well. Open the “control panel” “System Properties” “Device manager”, then check if it shows “Universal Serial Bus controllers” and see if they are in good working condition. If your computer does not have USB controller, then the USB device will not work.



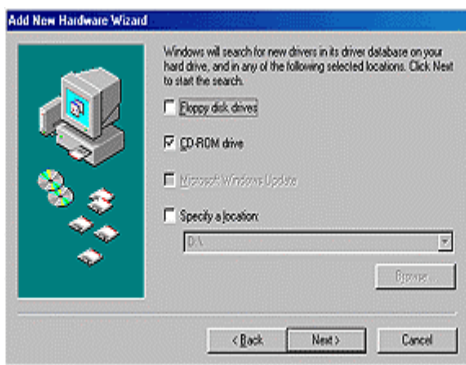
- 4.2 Insert the supplied installation software to “CD-ROM Drive” in PC, and plug the USD into PC’ s USB port. A “SB Mass storage Device” has been found and the following dialog box “Add New Hardware Wizard” will show up onto your screen. Then press “Next”.



- 4.3 Dialog box shows how Windows searches for the USD drivers. Choose “ Search for the best driver..” and press “Next” button.



- 4.4 Dialog box shows where to locate the USD drivers. Select item “CD-ROM drive”. Press “Next” button.



- 4.5 Dialog box shows that Windows has located the USD driver in drive ‘D’ . And press “Next” button.



- 4.6 Dialog box shows that Windows has finished the installation of the USD driver. Press “Finish” button.



When the above steps have been successfully completed, another Controller drivers should be installed as same steps as above from 4.2 to 4.6.

Now all drivers and controllers have been installed into your system. You should see the Removable Disk icon appearing in the window when you activate the “My Computer” icon.
Now you are ready to easily transfer data between your USD and computer.

5. How to use ?

The USD functions as a removable disk drive on your computer.

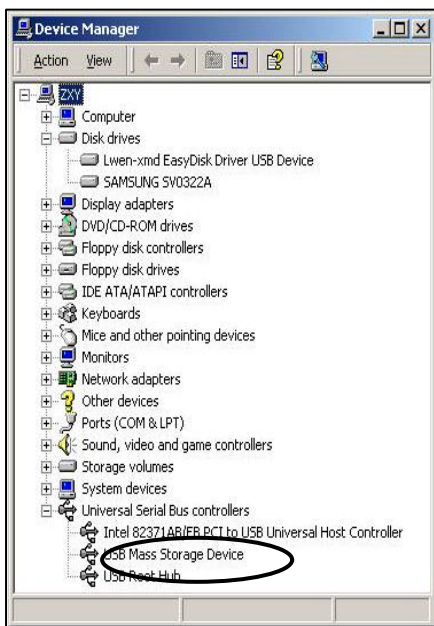
When you insert the USD to the USB port of your PC or Mac, then the “removable disk” icon will appear in the “My Computer Folder”.

You can use the USD the same way as a Floppy disk or a Hard drive on your computer.

When you pull out the USD from the USB port, the above icon will disappear.



You can find if the USD controller is installed properly by clicking onto “Control Panel” - “System Properties” - “device manager”.



6. Caution

- 1) When you remove the USD from the USB port, make sure that the Red illumination on the USD is not flashing. This is to ensure that files/data will not be lost. Even if the dialog box on your computer shows that the data transfer is finished.
- 2) In Windows ME, Windows 2000 and Windows XP, the safe procedure will be to double click on the icon located at the bottom right hand corner of your screen and to follow instructions before removing.

7. Specifications

Supported OS	Windows 98/SE, Windows ME, Windows 2000, Windows XP and Mac 8.6 or higher
Power Supply	USB Bus-powered (4.5V to 5.5V)
Capacities	16MB/32MB/64MB/128MB/256MB/512MB/1 Gig
Data Retention	10 years
Illumination	Green : device connected Red : Data receiving or transmitting
Data Reading/Writing Speed	Max 12Mbps/sec (depending on PC system)
Operating Temperature	0°C ~ +50°C
Storage Temperature	-20°C ~ +80°C
Dimension (LxWxH)	88mm x 25mm x 11mm
Weight	16g
Certification	
Warranty	1 year limited liability warranty

8. Warranty Disclosure

Your Universal Smart Drive comes with a one year hardware warranty.

We warrants the Universal Smart Drive against defects in material and workmanship. This warranty applies only to the original purchase of the Universal Smart Drive and is not transferable. This warranty does not cover any incompatibilities due to user' s computer, hardware, software or any other related system configuration in which the Universal Smart Drive interfaces.

Proof of purchase will be required before any warranty consideration by us.

This warranty does not apply to any failure or deficiency which has been caused by misuse, neglect, alternation, improper installation or handling, unauthorized repair or modification, improper testing, accident or causes external to the Universal Smart Drive, such as, but not limited to, excessive heat or humidity, power failure or improper installation or removal of the device.

FCC NOTICE

NOTE: This equipment has been tested and found to comply with the limits for a Class B digital device, pursuant to Part 15 of the FCC Rules. These limits are designed to provide reasonable protection against harmful interference in a residential installation. This equipment generates, uses and can radiate radio frequency energy and, if not installed and used in accordance with the instructions, may cause harmful interference to radio communications. However, there is no guarantee that interference will not occur in a particular installation. If this equipment does cause harmful interference to radio or television reception, which can be determined by turning the equipment off and on, the user is encouraged to try to correct the interference by one or more of the following measures:

- Reorient or relocate the receiving antenna.
- Increase the separation between the equipment and receiver.
- Connect the equipment into an outlet on a circuit different from that to which the receiver is connected.
- Consult the dealer or an experienced radio/TV technician for help.

NOTE: The manufacturer is not responsible for any radio or TV interference caused by unauthorized modifications to this equipment. Such modifications could void the user's authority to operate the equipment.