

User's Manual

USD 3x00 Series
(MD 3100)

Please read precautions before using

S DIGITAL INNOVATION
STORM BLUE

- Contents -

- 1. Introduction**
- 2. Features**
- 3. Specifications**
- 4. Precautions for Using Device**
- 5. How to use?**
- 6. CD Auto-run program**
- 7. Driver Installation for Windows 98/98SE**
- 8. Installation of X-Series Utilities**
- 9. Warranty Disclosure**
- 10. Safety Notes**
- 11. Tech. Support**

1. Introduction

The **USB DISK** is a compact, lightweight and portable storage device. It is one of the smallest USB flash drives on the market, which literally fits right into the palm of your hand! USB ports allow for fast data transfer and you do not need a separate power device or cable.

Just plug the USB DISK into the USB port of your computer and the drivers install immediately on their own. It is truly a Plug and Play device. No more hassles of downloading software. You can also cross platform your data from PC to Mac and vice versa.

On your desktop or notebook, the USB DISK looks and functions just like another hard drive. Carry it on a strap around your neck, slip it into your pocket, or just hold it in the palm of your hand. Now you can carry and secure your favorite movie, music, graphics library, valuable data or that very important business presentation with you wherever you go!!

2. Features

No drivers required*

Possible to divide the drive to two partitions

Plug-N-Play via USB port on PC and Mac

Convenient, Easy X-Series Application Software

① **X-Format : USB DISK Format program**

② **X-Key : USB DISK Device Lock**

③ **X-Mailer : Portable E-mailer**

④ **X-File security : File Encryption program**

⑤ **X-PC Lock : PC Locking program**

⑥ **X-Autorun : USB DISK File Auto-run program**

Bootable function: Use as booting disk (support USB-HDD, USB-ZIP)

Various memory capacities

Ideal for transferring large data files between computers

Fantastic for backing-up critical files

Able to cross platform from PC to Mac and vice versa

Great for taking data from office to home and back to office

Excellent for storing data, music files, pictures and important business presentations

* Installation program is required for Windows 98/SE. This program is supplied with the USB DISK accessories or can be downloaded from our website <http://www.stormblue.co.kr>

3. Specifications

Supported OS		Windows 98/SE, Windows ME, Windows 2000, Windows XP and Mac 8.6 or higher, Linux 2.4X or higher
System Requirements		IBM PC/AT or compatible Desktop / Notebook / Sub-Notebook / Laptop computers / Mac (Pentium® @ 100MHz or better) with USB ports
Power Supply		USB Bus-powered (4.5V to 5.5V)
Capacities	Memory Drive	16MB/32MB/64MB/128MB/256MB/512MB/1GB/2GB
	Universal Smart Drive	16MB/32MB/64MB/128MB/256MB/512MB/1GB
	Upgradeable Main unit	16MB/32MB/64MB/128MB/256MB/512MB/1GB
	Upgradeable Memory chip	64MB/128MB/256MB/512MB/1GB
Illumination		LED Lighting: Device connected LED Blinking: Data receiving or transmitting
Data Reading/Writing Speed		Max 1Mbyte/sec (depending on PC system)
Operating Temperature		0°C ~ +50°C
Storage Temperature		-30°C ~ +80°C
Dimension (L x W x H)	Memory Drive	63x21x11.6mm(32~512MB), 91x25x15.5mm(1GB, 2GB)
	Universal Smart Drive	86 x 25 x 11mm
	Upgradeable Universal Smart Drive	77.2 x 28 x 17.6mm (main unit) 36.2 x 19.5 x 10.2mm (upgradeable memory chip) 97.5 x 28 x 17.6mm (with upgrade memory chip)
Weight	Memory Drive	15g(16~512MB), 30g(1GB, 2GB)
	Universal Smart Drive	16g
	Upgradeable Universal Smart Drive	18g (main unit) 23g (with upgrade memory chip)
Package Accessory		USB Extension cable, CD-ROM, Neck Strap, User Manual
Provided Software		X-Format / X-Key / X-Mailer / X-Lock / X-File Security / X-Autorun
Certification		FCC, CE, MIC
Warranty		1 year limited liability warranty

4. Precautions for Using Device

- 4.1. For using the bootable function of the USB DISK your computer must support “USB-ZIP” or “USB-HDD” in the bootable section of CMOS (ROM-BIOS). Do not use the USB DISK by setting up the bootable function of a PC which does not support “USB-ZIP” or “USB-HDD” in CMOS because it may possibly cause some troubles in your PC.
- 4.2. The data in the USB DISK might be damaged for several reasons such as: ‘user’s carelessness’, ‘system down’, ‘Abnormal stop of electric current’, etc. So, please backup your data on another storage device as a precaution.
- 4.3. When disconnecting the USB DISK in Windows Me, Windows 2000 and Windows XP you must double click the icon "Unplug or Eject Hardware" which is located at the bottom right corner of your screen and follow the instructions before removing. If you are using a Macintosh OS, we suggest that you use the “Eject” or “Put Away” option before unplugging the USB DISK. In LINUX you should un-mount the USB DISK before unplugging.
- 4.4. When removing the USB DISK from the USB port, please ensure that the Green light on the USB DISK is not flashing and that the light is in fact solid blue. This will ensure that your data on the device is not lost. It is very important that you check the USB DISK light even if the dialog box on your computer shows that the data transfer is finished.
- 4.5. Please disconnect the USB DISK from the USB port before turning your computer on/off. It is also important to ensure your computer has finished booting before connecting the USB DISK.
- 4.6. Please ensure that you follow the instructions manual for proper driver installation if your operating system is Windows 98/SE. It is required that you install the Windows 98/SE drivers, which are included on the provided CD-ROM (see section:7. Driver Installation for Windows 98/SE).

Note: If your operating system is Windows ME, Windows 2000, Windows XP, Macintosh Version 8.6 or higher or Linux Kernel Version 2.4.x or higher, DO NOT install the Windows 98/SE driver.

5. How to use?

The USB DISK functions as a removable disk drive on your computer. When you insert the USB DISK to the USB port of your PC or Mac, then the "removable disk" icon will appear in the "My Computer Folder". You can use the USB DISK the same way as a Floppy disk or a Hard drive on your computer. When you disconnect the USB DISK from the USB port, the above icon will disappear (see section: 4. Precautions for using Device



You can determine if the USB controller is installed properly by selecting "Control Panel" - "System Properties" "Device Manager" as the "USB Mass Storage Device" or "GENERIC USB Mass Storage" should appear under "Universal Serial Bus controllers", "Disk drives" and "SCSI controllers".

5.1. Macintosh Operating System

The USB DISK supports Macintosh versions 8.6 or higher.

When you connect the USB DISK to the USB port of your Mac, the drive's icon will appear on your desktop. When you disconnect the USB DISK from the USB port, the icon will disappear. It is required that you use the "Eject" or "Put Away" option before disconnecting the USB DISK. Another option would be to drag the icon to the "Trash" icon from your desktop.

Mac OS 8.6 Ensure to install "USB Mass Storage 1.3.5.smi" at apple's web site.

http://download.info.apple.com/Apple_Support_Area/Apple_Software_Updates/English-North_American/Macintosh/USB_Updates/USB_Storage1.3.5.smi.bin

5.2. Linux Operating System

The USB DISK supports Linux kernel versions 2.4.x or higher.

The following installation instructions have been documented below regarding Linux commands for the USB DISK. Please note that when disconnecting the USB DISK we suggest that you unmount the USB DISK before removing.

Linux Instructions for the USB DISK:

[Installation]

1. Install Linux kernel version 2.4.x or higher.
2. Login as "root".
3. Open terminal window after booting with X-Window.
4. Connect the USB DISK to the USB port.
5. Enter the following commands in the terminal window (shell input mode).

[Access to USB SCSI devices]

1. # ls /proc/scsi/usb-storage-0
The numbers of USB SCSI device are displayed (0, 1, 2,...).
2. # cat /proc/scsi/usb-storage-0/0
The information of the firmware related to the USB DISK is displayed.

[Set Partitions or format mode]

1. # fdisk /dev/sda
You can use the "fdisk" function in Linux (Look for the fdisk manual for more details).

[DOS format]

1. # mkfs.msdos /dev/sda1
You can format with DOS/FAT(note: You cannot format when the USB DISK is mounted).

[Mount]

1. # mkdir /mnt/usb
Make a directory where the USB DISK will be mounted.
2. # mount /dev/sda1 /mnt/usb
Mount the USB DISK to "/mnt/usb" directory.
(The USB DISK will be linked to "/mnt/usb" if there is no special message.)

[Unmount]

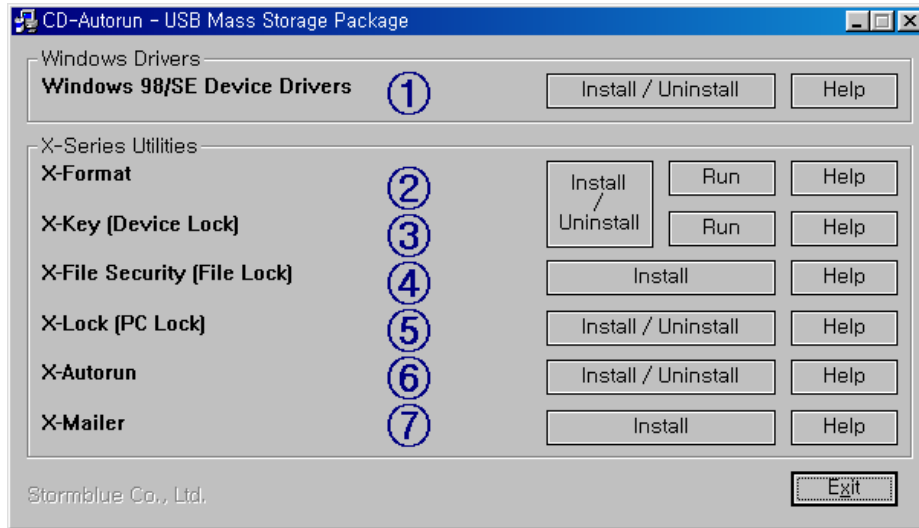
1. # umount /dev/sda1
Release mount.

[Tips]

1. The command to un-mount the USB DISK is "umount".
2. If you're in "/mnt/usb" directory, then the USB DISK cannot be un-mounted.
3. We recommend you mount the USB DISK with "/etc/fstab" and "/dev/sda1 /mnt/usb auto defaults 0 0" in the text editor.
4. In Red Hat Linux you can use "Disk Management (User Mount Tool)" in "GNOME" for Mount management.
5. You should unmount the USB DISK before you disconnect the drive; ensure the LED turns from blinking to lighting, which may take a few seconds.

6. CD Auto-run Program (only for Windows' users)

Auto-run program is executed automatically when you insert the CD-ROM in your PC. You can install required software through this program.

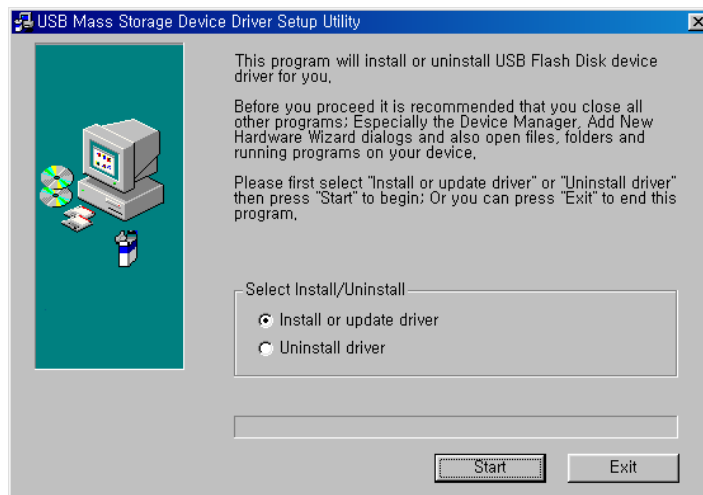


- ① Windows 98/SE Device Drivers : Refer to “**7. Driver Installation for Windows®98/SE**”
- ② X-Format : Refer to “**8. Installation of X-Series Utilities**”
- ③ X-Key [Device Lock] : USB DISK device Lock. Refer to “**8. Installation of X-Series Utilities**”
- ④ X-File Security[File Lock] : File Encryption program. Refer to “**8. Installation of X-Series Utilities**”
- ⑤ X-Lock [PC Lock]: PC Lock program. Refer to “**8. Installation of X-Series Utilities**”
- ⑥ X-Autorun : USB DISK file automatic-running program. Refer to “**8. Installation of X-Series Utilities**”
- ⑦ X-Mailer : No SMPT Mobile e-mailer program. Refer to “**8. Installation of X-Series Utilities**”

7. Driver Installation for Windows®98/SE

7.1. Auto Installation

- 7.1.1. Please plug in the USB DISK into the USB port and insert the CD-ROM in PC.
* When the dialog box “Add new Hardware Wizard” appears, you should close this dialog box.
- 7.1.2. On Auto-run program (setup.exe), click “Install/Uninstall” button of Windows 98/SE Device drivers.
- 7.1.3. Click “Install or update driver” in the dialog box and press ‘Start’.

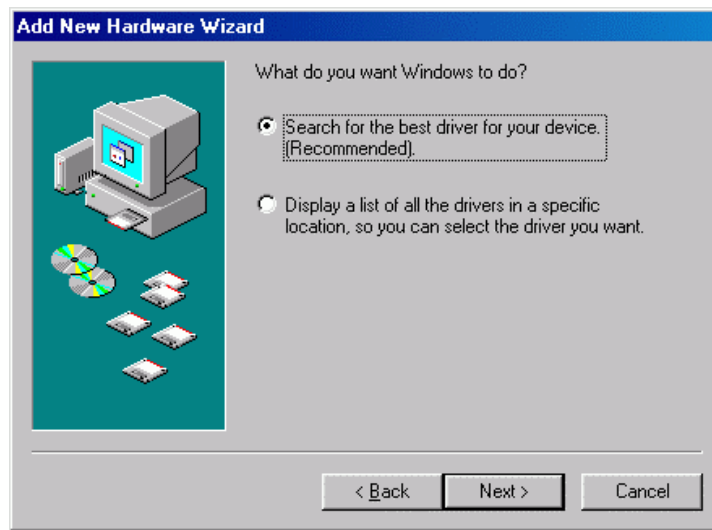


7.2. Basic Installation

- 7.2.1. Plug the USB DISK into the USB port and insert the CD-ROM in the computer. A “USB Mass storage Device” message appears and the following dialog box “Add New Hardware Wizard” will show up on your screen. Then press “Next”.



7.2.2. The dialog box shows how Windows searches for the drivers. Choose “ Search for the best driver.” and press “Next”.



7.2.3. The dialog box shows where to locate the USB DISK device drivers. Select the option “CD-ROM drive”. Press the “Next” button.



7.2.4. The dialog box shows that Windows has located the USB DISK driver in drive 'D'. Press the "Next" button.



7.2.5. The dialog box shows that Windows has finished the installation of the USB DISK driver. Press the "Finish" button.



Now all drivers and controllers have been installed into your system. You should see the 'Removable Disk' icon appearing in the window when you activate the "My Computer" icon. Now you are ready to easily transfer data between your USB DISK and your computer.

8. Installation of X-Series Utilities

8.1. X-Format

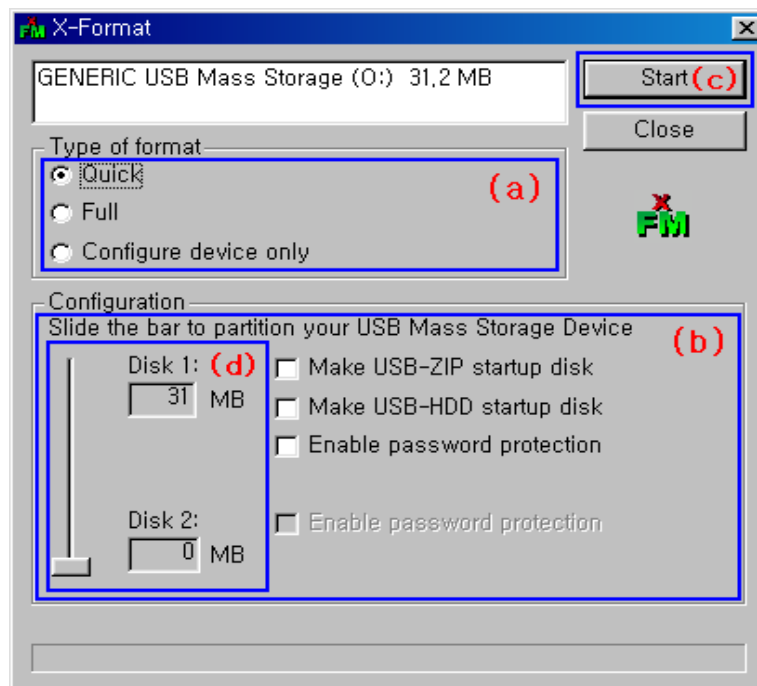
The USB DISK has been formatted at the Factory without the X-Key program and the Bootable disk program installed. Formatting the drive with X-Format is required for using the above programs with your operating system.

Bootable function is available only for Windows 98/98SE/ME.

After format is completed, unplug and reconnect the USB DISK to the USB port.

8.1.1. Open the X-Format program window, you can choose one of three types of formats as the following picture depicts [(a) in Pic].

- Quick Format: As Logical Format, it's similar to Windows Format.
- Full Format: As Physical Format, it makes all sectors of the memory clean, but it takes longer.
- Configure device only: It will perform "Configuration" [(b) in Pic.] such as "Make startup disk" or "Enable password protection" without checking or formatting the disk.



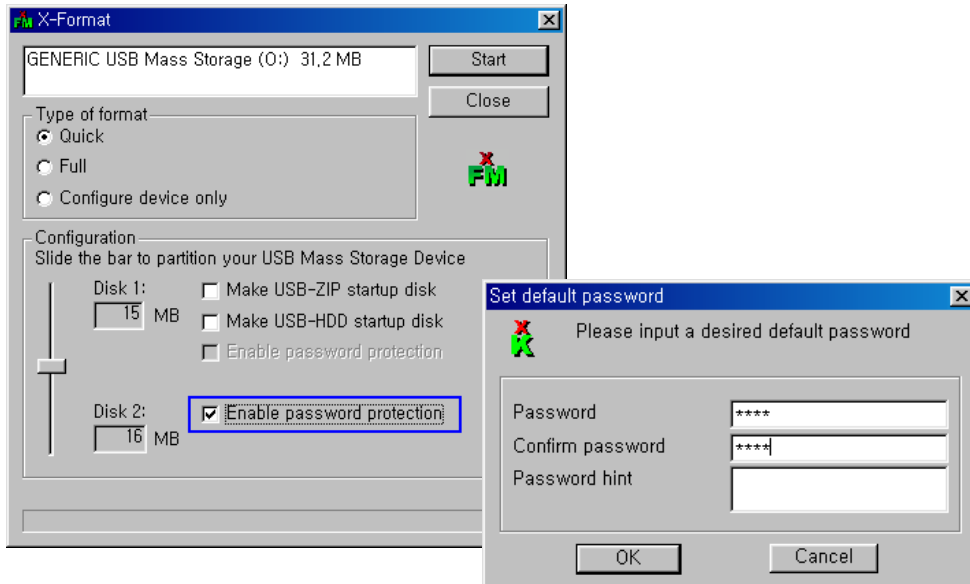
Click "Start" button then execute format. [(c) In Pic.]

8.1.2. Partitioning the Disk

You can partition the USB DISK by moving up and down along the slide bar and control the capacity of each disk. [box (d)]

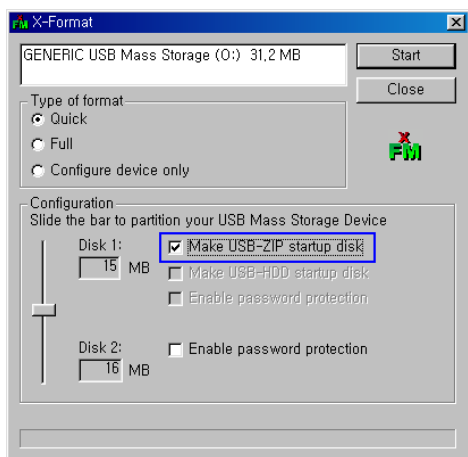
8.1.3. X-Key

You can use this function after check “Enable password protection” option and format. (Refer to Section: 8.2 X-Key.)

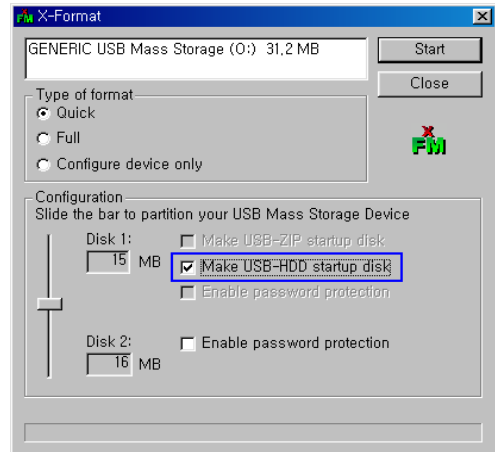


8.1.4. If you check “Make USB-ZIP startup disk” or “Make USB-HDD startup disk” option and format, you can use it as a substitute for Booting Floppy Diskettes (or Booting CD-ROMs etc). But if you want to use this function, “USB-ZIP” or “USB-HDD” must be in the Bootable section of CMOS (ROM-BIOS). For more information, please ask your PC motherboard manufactures.

1) USB-ZIP startup disk



2) USB-HDD startup disk



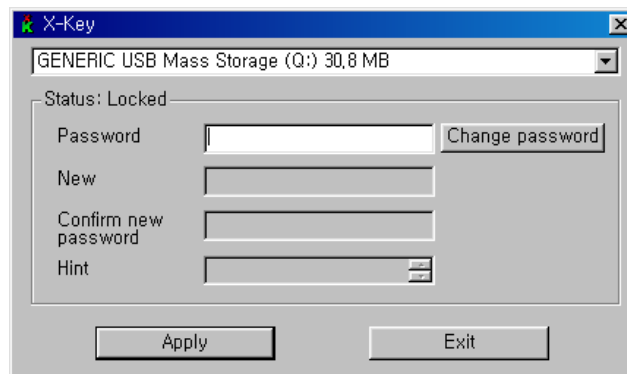
In a case such as below you must do “Full Format”.

- 1) The Fatal Exception error or BSOD (Blue Screen Of Death) appears during writing and reading. (It is caused by bad sectors being created inside the memory chip probably because of misuse.)
- 2) Windows (or DOS) Format is not working.

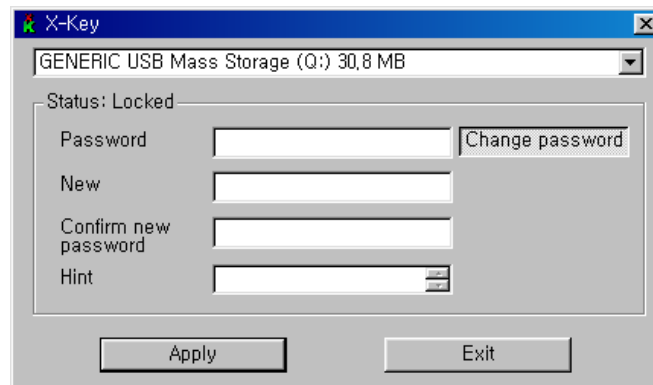
* Formatting will erase all the data in the device.

8.2. X-Key

- 8.2.1. X-Key Program is a device lock security program that protects your important files from the approach of other people.
- 8.2.2. For using X-Key Program you have to format after select “Enable password protection” option in X-Format. (Refer to Section 8.1: X-Format.)
- 8.2.3. When the format is completed the X-Key program (xKey.exe) is saved onto the USB DISK. You can run X-Key program from the USB DISK and can lock or unlock the USB DISK.
- 8.2.4. You can see the dialog box on the screen as the following picture depicts if executing the X-Key program. If you input a password and click “Apply”, then the USB DISK is unlocked.



- 8.2.5. If you want to change the password, click “Change password” button. Enter your old password in the “Password” text box, then enter the new password in the “New” text box. Confirm your new password in the “Confirm new password” text box and type in a password hint in the “Hint” text box. Click “Apply” to confirm the changes. To cancel the password, click “Exit”



** To unlock X-Key, click the “Change password” button. Enter your password in the “Password” text box but leave blank in “New” and “Confirm new password” text box and click “Apply”.

- 8.2.6. If executing the X-Key program, the key-shaped icon is created in the Tray Bar on the right bottom. After placing the cursor of the mouse on the key-shaped icon, click the right button. You can select “Unlock USB Mass Storage Device” or “Change password”.



- 8.2.7. After inputting a password you cannot use the USB DISK without the password. If you forget the password it is impossible to restore the data. The only way is that you have to format the entire drive to return to original conditions. As a result, all data in the USB DISK will be lost. So please be careful to remember the password!!!

8.3. X-File Security

This Security Program is an application, which is compatible with the USB DISK and the Windows operating system. The program allows for the user to add a level of security to their files. If you are going to access the protected files from another computer, then ensure that the X-File Security Program is installed on that computer. Please refer to Program Definitions and Descriptions for assistance.

If your operating system is Windows 98, (not for Windows 98SE/ME/2000/XP), it is required that you install the "MDAC" (Microsoft Data Access Components) program prior to installing the X-File Security Program.

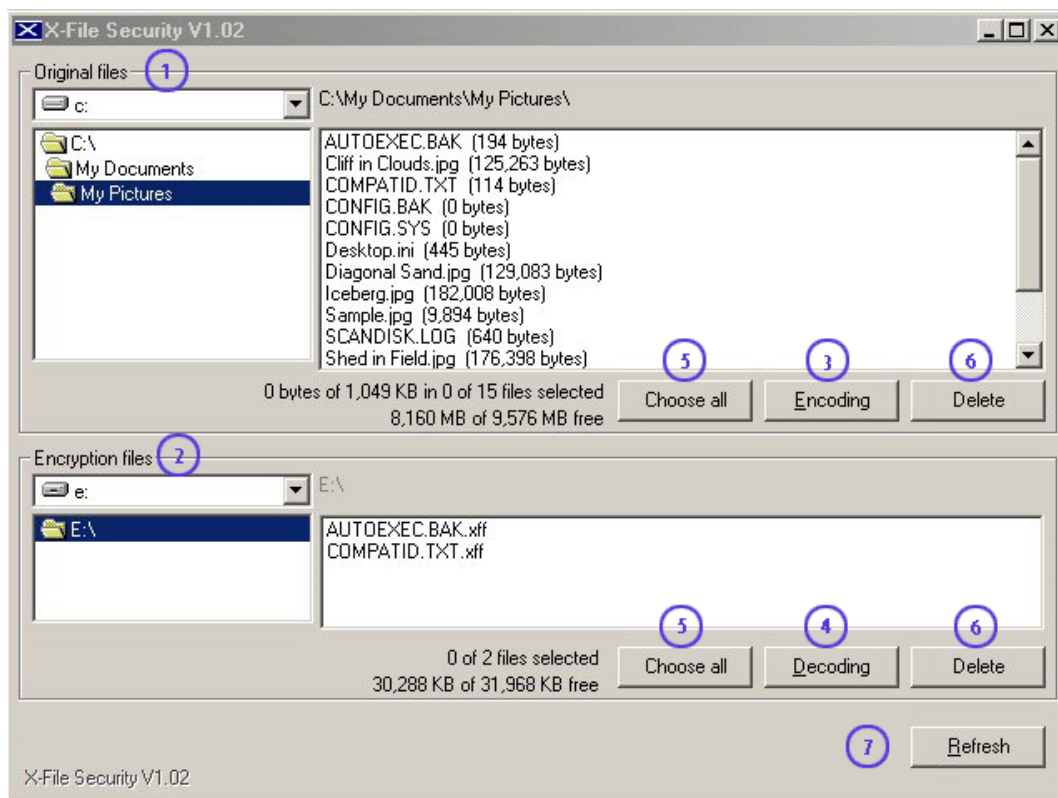
The X-File Security Program and the MDAC Program can be selected from the provided CD-ROM, or you can select the programs from the "Support" - "Downloads" menu on our website: www.stormblue.co.kr

Instructions for the X-File Security Program:

- 1) Install the X-File Security Program on your computer system.
- 2) Connect the USB DISK, ensure that it shows on your desktop as a "Removable Disk" drive.
- 3) Start the X-File Security Program by selecting the shortcut on your desktop.
- 4) Indicate the correct drive and path in the "Original files" menu to show the file(s) which you would like to select for password security.
- 5) Indicate the correct drive and path in the "Encryption files" menu to show where you would like to save the encoded file(s), such as the Universal Smart Drive.
- 6) Choose the file(s) from the "Original files" window which you would like to encode for security and select the "Encoding" option.
- 7) Enter a password for the protected file(s), which can be from 1 to 8 characters (caution: ensure to remember the password(s), as this is the only way to decode files).
- 8) To access encoded files, select the file to open and enter the password which was used to encode the file.

- 9) To decode file(s) or remove passwords associated to file(s), indicate the correct drive and path in the “Encryption file” menu and choose the file(s) from the “Decoding” files window.
- 10) Select the “Decode” option and enter the password which was used to encode the file(s). This will place a copy of each file selected in the location indicated from the “Original files” window with no security.

Program Definitions:



- ① Original files – this menu allows the user to indicate the drive and the file location for files which they would like to add password protection or a location for files they would like to decode.
- ② Encryption files – this menu allows the user to indicate the drive and the file location for where they would like to save the password protected files or a location for files they would like to decode.
- ③ Encoding – this option will prompt the user for a password, when entered will create a password protected file for each file selected and shows as a “XFF” file format.
- ④ Decoding – this option will prompt the user for a password, when entered will place a copy of each file selected in the location indicated without file security.
- ⑤ Choose all – this option allows the user to select all files from the window area when encoding, decoding or deleting files.
- ⑥ Delete – this option allows the user to remove ANY FILE (S) that have been selected, ensure to be careful as this also includes files from your computer.
- ⑦ Refresh – this option will show the most current file information regarding your computer system.

Note: When encoding a file, the program creates a copy of the original file and saves that password-protected file into the location indicated in the “Encryption files” window. When decoding a file, the program creates another copy of the original file and saves the unsecured file into the location indicated in the “Original files” window.

Note: If you are going to access the encoded files from another computer, ensure that the X-File Security Program is installed on that computer. We suggest for the user to save the X-File Security Program on the USB DISK, which can then be easily installed.

Note: Passwords are case sensitive. Ensure to remember password(s) as you are not able to access files that have been encoded without the original password(s).

Note: The “Delete” option in the “Original files” window will remove all of the selected file(s) when this option is entered (caution: ensure to be careful as this option removes any file(s) selected including files from your computer).

Note: If you have mistakenly removed files from your computer using the “Delete” option in the “Original files” window, you can locate the deleted files from the Windows “Recycle Bin”.

Note: The “Delete” option in the “Decoding files” window will remove all of the “Encoded” file(s) which have been selected when this option is entered.

8.4. X-Mailer

8.4.1. Introduction

- X-mailer is a **Mobile e-mailer program** to receive/send/store their e-mails just through their USB DISK at any PC without using Outlook(Express) of the PC.
- At any PC out of your home or office, you can manage your e-mails just by plugging your USB DISK to the PC.
- X-mailer uses its own engine instead of Outlook(Express) from Microsoft. It does not need to access to the Outlook of the PC and accordingly does not leave any data of your e-mails in the PC.

8.4.2. Main Features

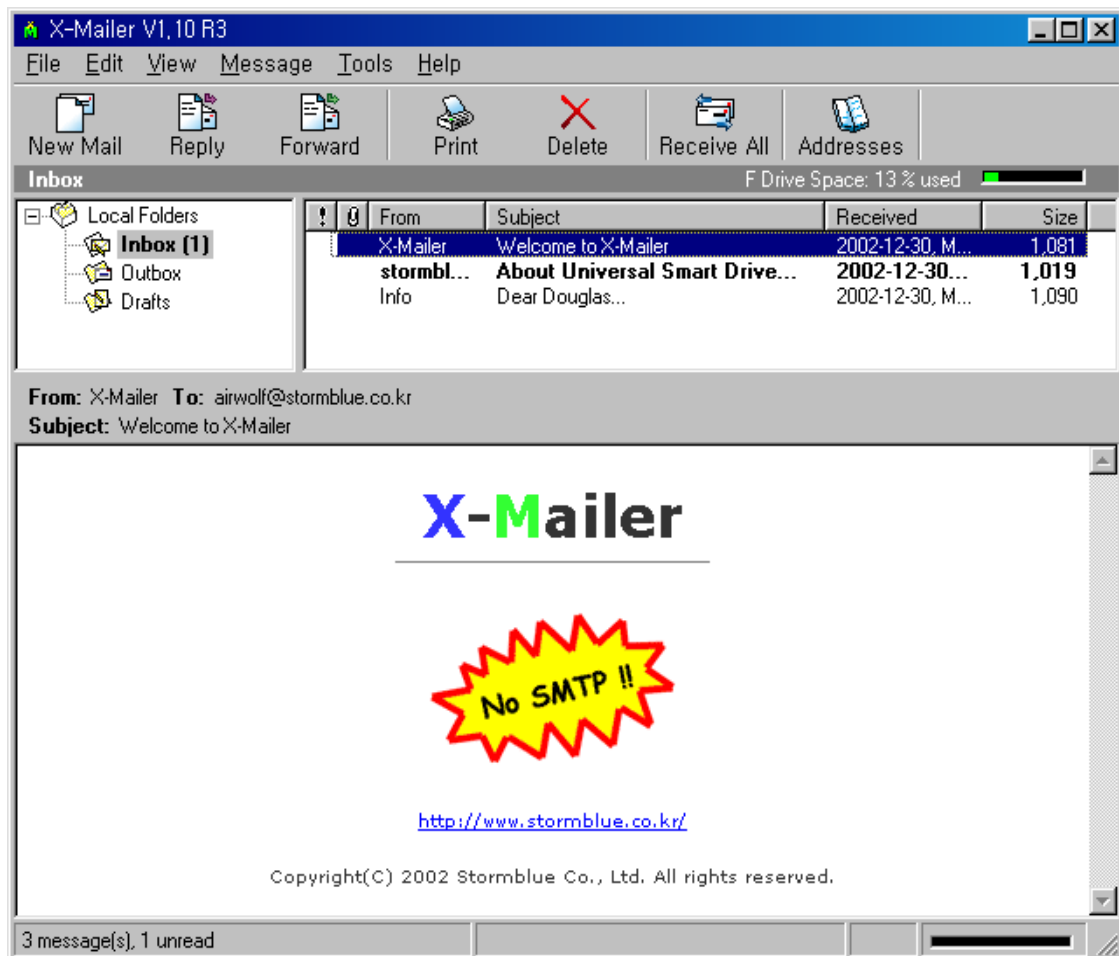
- You can send e-mails without outgoing mail server(SMTP).
- Mobile e-mailer to be installed in your USB DISK.
- To manage your e-mails just by plugging the USB DISK to any PC.
- Just one time set-up for user mail account.
- No need to access to the Outlook of the PC and no trace of your e-mail at the PC.
- Easy to import the mail account and mail address from Outlook.
- To show the free space of the USB DISK.
- Very simple use as similar as Outlook(Express).

8.4.3. Caution

- Please choose Removable Disk to install this program.
- After using X-mailer work, please finish the program rightly and then separate drive safely according to <User’s Guide>.

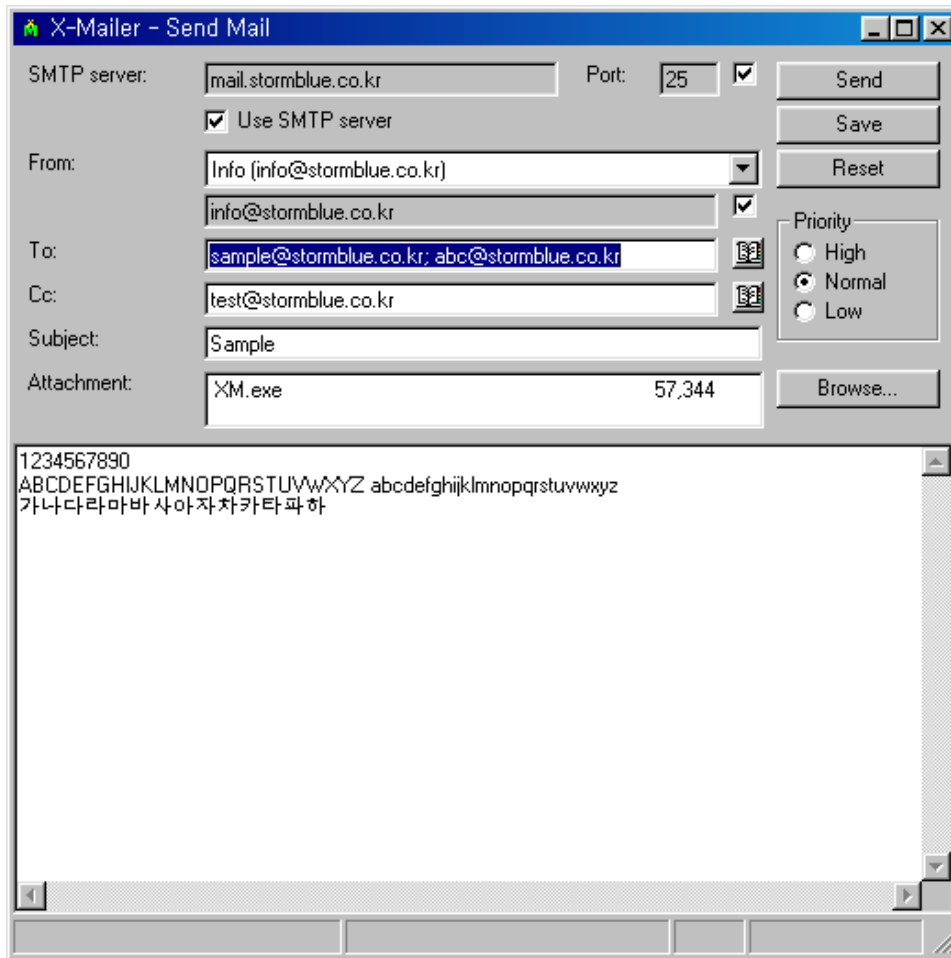
8.4.4. How to use?

8.4.4.1. Main Window



- 1) Pull-down menu : List of all functions of X-Mailer.
 - File, Edit, View, Message, Tools, Help.
- 2) Tool bar : List of function icons frequently used.
- 3) Mail box folders : This folder saves all mails of your accounts.
 - * Unread mails are indicated by number in box.
 - Inbox : This folder saves mails from your mail servers.
 - Outbox : This folder saves sent mails.
 - Drafts : This folder saves mails that you saved temporarily before you send.
- 4) Mail list window : All mails are listed by date here.
 - Unread mails are indicated by thick font and shows the capacity by bytes so that you can erase unnecessary mails.
 - You can choose mails here and move 'Outlook Express' mail list window with 'Drag & drop'.
- 5) Mail contents window : shows mail contents.
- 6) Status Bar : shows mail number and working process.

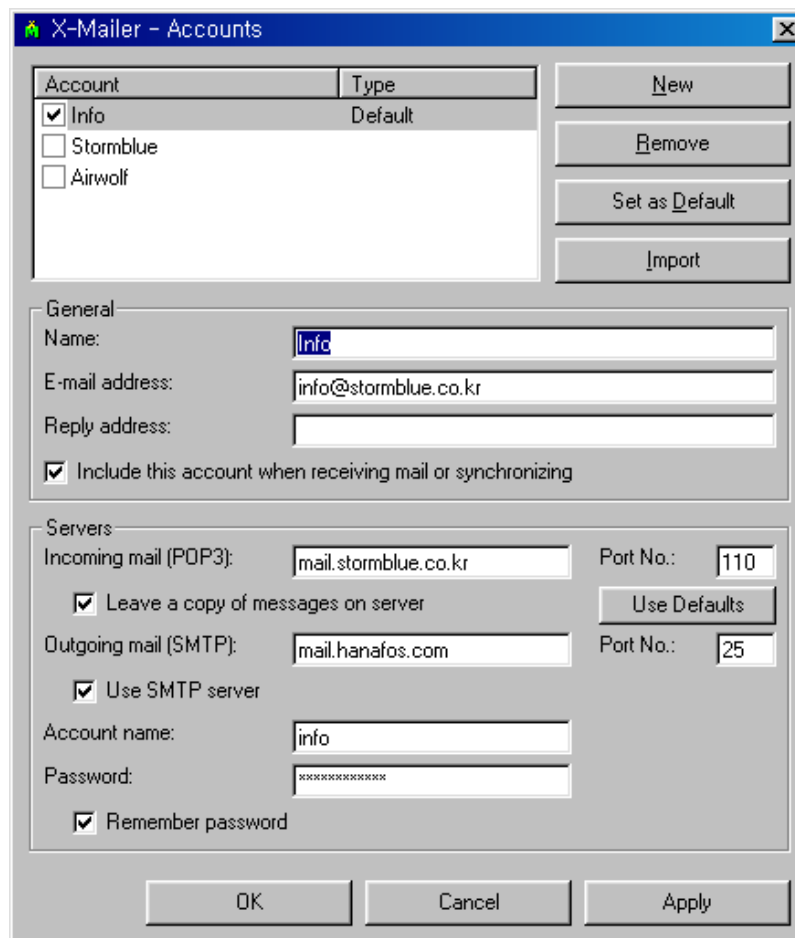
8.4.4.2 Send Mail



- 1) SMTP server : You use this server When you send an e-mail.
X-Mailer supports two ways to use SMTP server and not to use SMTP server.
 - ① **Send Mail without SMTP server** : It's faster and you can send mails more easily wherever you are because X-mailer doesn't need to use SMTP server. But it can take more time to send mails to receivers when the receivers are many.
 - ② **Send Mail with SMTP server** : It's more sta many receivers because the mails will pass through SMTP server. But you should input new SMTP server address whenever internet connection PC changes.ble when you send mails to
- 2) SMTP Port number : Default port number of outgoing mail is '25'. This program uses this basic port number '25' unless particular SMTP server.
- 3) From : Sender's mail address. If registered mail accounts are plural, you can click and choose one from the Pull-down menu.
- 4) To : Receivers mail addresses. If you want to add more than one account, you must divide them with semicolon(;).
ex) sample@stormblue.co.kr; abc@stormblue.co.kr; test@stormblue.co.kr
If you click address icon button and you can import registered mail addresses very easily. If you bring mail accounts from mailing list, they are added and listed automatically with semicolon(;).
- 5) Cc : This account receiver will refer the same mail contents. The way to input mail address is the same as 'To' accounts.
- 6) Attachment : You can attach files to the mail by clicking 'File search' button or choose

- file(s) and put in by 'drag & drop'.
- 7) Subject : The mail's main title.
 - 8) Contents : The mail's contents.
 - 9) Priority : You can set the priority of the mail.
 - 10) 'Send' button : When you click this button, the mail will be sent to the receiver and then the mail sending window will be closed automatically.
 - 11) 'Save' button : When you click this button, the unfinished mail is saved to 'Drafts'. Later you can correct and send the mail after you double click the mail in the 'Drafts'.
 - 12) 'Reset' button : When you click this button, all written contents will be erased and initialized to new mail sending window.

8.4.5 Mail Accounts

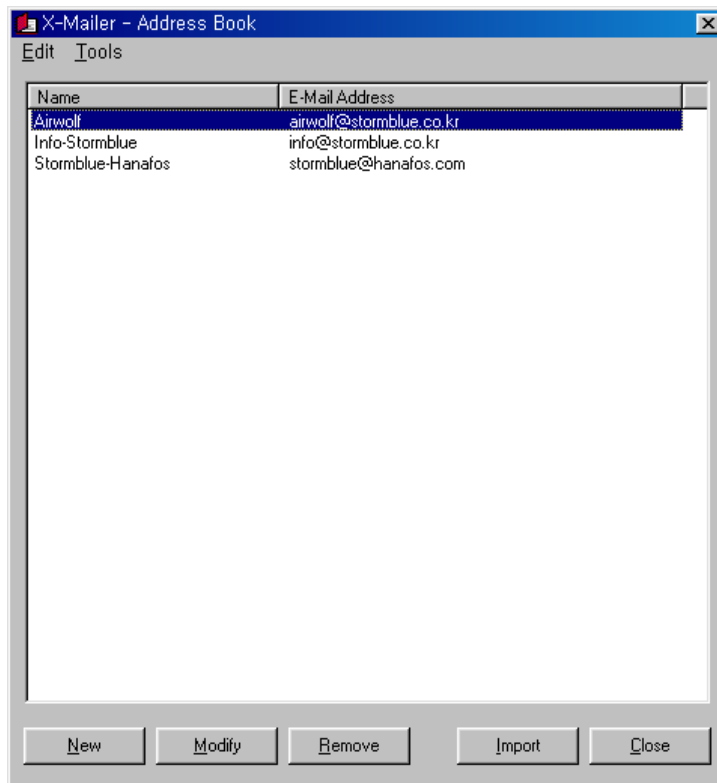


- 1) Account list window : shows all registered accounts and when you erase check mark, the accounts will be omitted for bringing mails.
- 2) 'New' button : Click and input to register new account.
- 3) 'Remove' button : Click and remove the account chosen in the account list window.
- 4) 'Set as Default' button : Click to choose the account in the list and set the Default account for using X-mailer. After you set an account as a Default, this program keeps the setting when you send or receive mails.
- 5) 'Import' button : Click to import registered accounts from 'Outlook Express'. At this time you should input the password of account.
- 6) Name : Input the representative name here. This name doesn't need to be same as the

name of the account. There is no specific rule to input the name.

ex) 'James', 'Sara', 'Hello'...

- 7) E-mail address : The E-mail address of the account.
- 8) Reply address : If you omit this address, then the address will be the same as upper mail address.
- 9) 'Include this account when receiving mail or synchronizing' check option : If you check this option, then it will include this account when it brings the mail.
- 10) Incoming Mail(POP3) : Input incoming mail(POP3) server address. Even if the PC internet connect changes, this mail server address remains the same.
- 11) Incoming Mail Port Number : sets and keeps the default number(110) unless it uses particular POP3 server.
- 12) Leave a copy of messages on server : Check and the mails remain in server even when this program brings the mails from server. If the mails remain in server, then you can import and check them with other mailer programs(Outlook Express). But it could make mail server full with mails and at last, no more mail could be received. If you turn off this option, then the mails in the mail server will be erased at the same time importing mails from the server. And then you cannot import them with other mail programs. So turn off this option only when you are sure you don't need to import them with other mailer programs later.
- 13) Outgoing mail(SMTP) : If you use SMTP server, Input SMTP server address of your internet service provider.
- 14) Outgoing Mail Port Number : Use default number(25) unless the mail server uses particular SMTP server.
- 15) 'Use SMTP Server' check option: Refer to the '4.2.1. SMTP(Outgoing mail) server'.
- 16) Account name : The ID to log on to POP3 mail server.
- 17) Password : The password of 'Account name'.
- 18) 'Remember password' check option : Check and you can log on automatically and if this option is unchecked, there will show a Log on window when this program imports mails from server.



8.4.6 Address Book

- 1) Pull-down menu
 Edit – Choose All : You can choose whole addresses in the list.
 Tools – Send Mail : You can send a mail to chosen addresses in the list.
- 2) Address Book window : It shows representative names and mail accounts.
- 3) New : You can Input new addresses in the mail address list.
- 4) Modify : You can correct chosen addresses in the list window.
- 5) Remove : You can remove chosen addresses in the list window.
- 6) Import : You can import addresses form 'Outlook Express' address book.
- 7) Close : You can close Address Book window. At this time all changes are saved automatically.

8.5 X-Lock

8.5.1 Introduction

- This program is to lock or unlock your PC by plugging or unplugging the USB DISK.
- This program makes your PC accessible only when your USB DISK is plugged into your PC
- You can shut down PC at pre-set time in Manager program.
- This program cannot be used together with X-Key program provided.
- If you use X-Key function of the USB DISK, please cancel it before starting X-Lock.

8.5.2 X-Lock install and changing password

8.5.2.1 Install X-Lock program. (Re-Installing the program will remove the program.)

8.5.2.2 Click the “password change” button in the initial window of X-Lock.

8.5.2.3 Plug in the USB DISK and change password.

* USB DISK must be plugged in when you change the password.

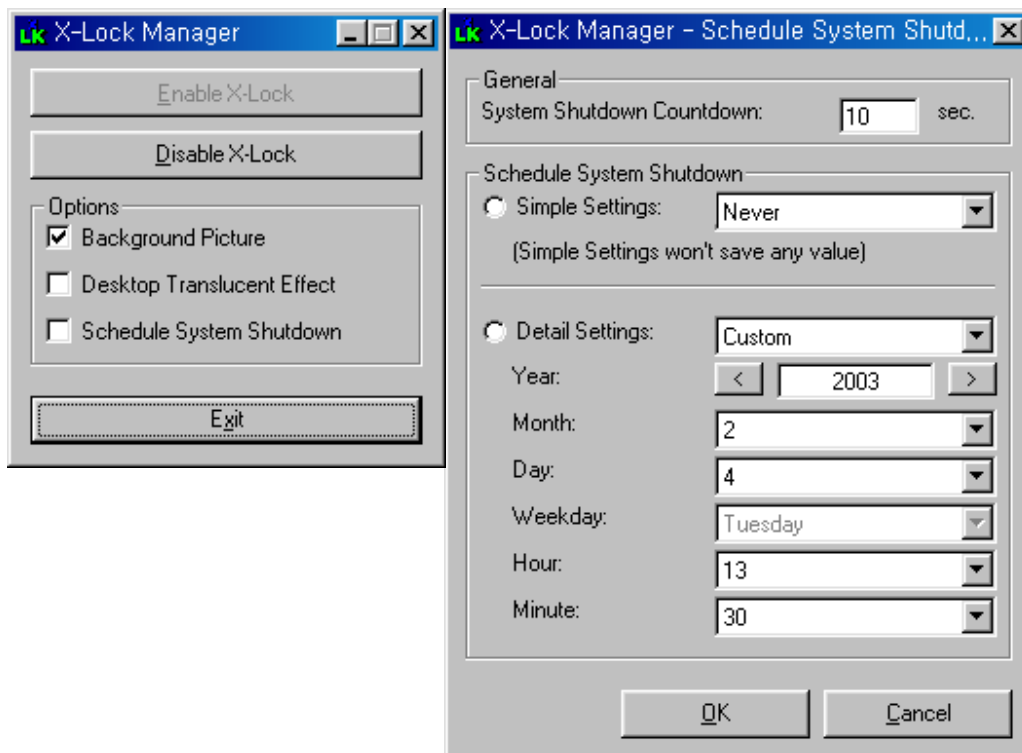
* The default password is '1111'.

8.5.2.4 Write in new password and click “unlock”.

8.5.2.5 Disconnect the USB DISK from USB port safely.

8.5.2.6 Now the install process of X-Lock is completed. The X-Lock icon will be produced automatically on the desktop.

8.5.3 How to use X-Lock Manager ?



8.5.3.1 X-Lock manager can pause or restart X-Lock function.

8.5.3.2 Double click X-Lock Manager icon on desktop and run the Manager program.

8.5.3.3 Click [Enable X-Lock] button and X-Lock program will be loaded in PC and the program will run in background automatically.

8.5.3.4 Click [Disable X-Lock] button and X-Lock in background will unload in Pc and won't run.

- 8.5.3.5 If you check "Background Picture" option, then the Picture shows on the system locked desktop.
- 8.5.3.6 If you check "Desktop Translucent Effect" option, then you can make transparent effect on the system locked desktop.
- 8.5.3.7 If you check "Schedule System Shutdown" option, then you can shut down the PC at the time you want.
- 8.5.3.8 If you click "Settings for System Shutdown" button, then you can make basic settings of system shut down.
- 8.5.3.9 **If you want to login without the USB DISK, then press the [Ctrl+Shift+P] at the same time to login.**

8.5.4 Caution

This program can not be used with the X-Key program. If you want to use X-Lock program, then please remove the X-Key program.

8.6 X-Autorun

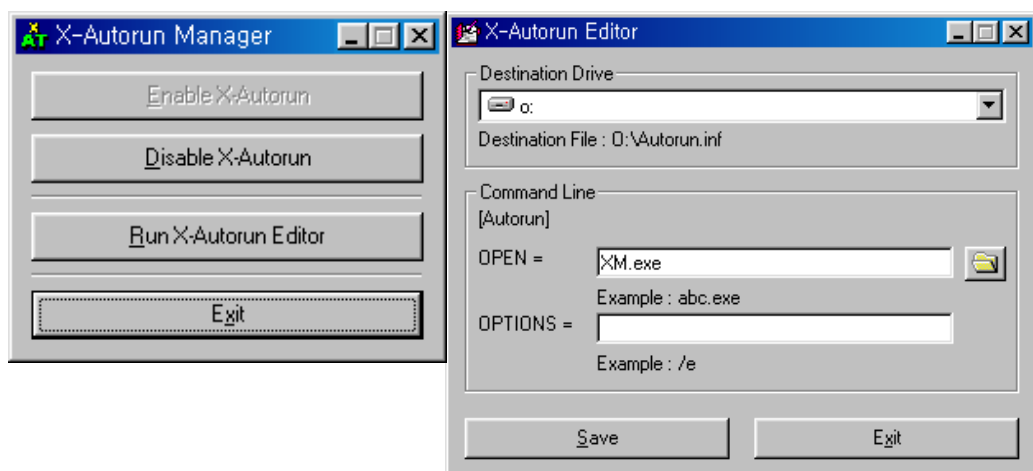
8.6.1 Introduction

This program runs automatically the specified file in the USB DISK by plugging the USB DISK at USB port of PC.

***This program cannot be used together with the X-Key program provided.**

If you use the X-Key function of the USB DISK, then please cancel it before starting X-Autorun.

8.6.2 Installation



- 8.6.2.1 Install X-Autorun program. (Installing the program once more will remove the program.)
- 8.6.2.2 Double click X-Autorun Manager icon on the desktop and click 'X-Autorun Editor' button to start X-Autorun Editor.
- 8.6.2.3 Choose Removable disk on X-Autorun Editor window.
- 8.6.2.4 Click the [File Open]button and choose the file to run automatically.
- 8.6.2.5 If the chosen file needs an option, then input the value in 'OPTIONS=' line.
It's possible to input the value or omit.
- 8.6.2.6 Click [Save] button to save Autorun.inf file.
- 8.6.2.7 Disconnect the USB DISK from USB port safely.
- 8.6.2.8 Connect the USB DISK to USB port again and check whether the chosen file in "Command Line" works or not. (If it doesn't work, then restart from No. 2.2.)

9. Warranty Disclosure

Your USB DISK comes with limited one-year hardware warranty.

We warrant the USB DISK against defects in material and workmanship. This warranty applies only to the original purchaser of the USB DISK and is not transferable.

This warranty does not apply to any failure or deficiency which has been caused by misuse, neglect, alteration, improper installation or handling, unauthorized repair or modification, improper testing, accident or causes external to the USB DISK, such as, but not limited to, excessive heat or humidity, power failure or improper installation or removal of the device.

This warranty does not cover any damage or data loss due to problems with user's computer/ hardware/ software/ any other peripherals, operating conflict with other installed software, other accident or unavoidable damages.

We cannot accept liability for financial damages, lost profit, claim from third parties, etc., arising from the software provided with this unit.

Proof of purchase will be required before any warranty consideration by us.

The warranty as set forth shall not be enlarged, diminished or affected by, and no liability shall arise out of us, rendering of technical advice or service in connection with your order.

The warranty set forth above is not assigned by you.

This Warranty applies only to this product and is governed by international laws.

This publication could include technical inaccuracies or typographical errors. Changes may be periodically made to the information herein.

10. Safety Note

This equipment has been tested and found to comply with the limits for a class B digital device, pursuant to Part 15 of the FCC Rules.

These limits are designed to provide reasonable protection against harmful interference in a residential installation. This equipment generates, uses and can radiate radio frequency energy and if not installed and used in accordance with the instructions, may cause harmful interference to radio communications. However, there is no guarantee that interference will not occur in a particular installation. If this equipment does cause harmful interference to radio or television reception, which can be determined by turning the equipment off and on, the user is encouraged to try to correct the interference by one or more of the following measures:

- Reorient or relocate the receiving antenna
- Increase the separation between the equipment and receiver
- Connect the equipment into an outlet on a circuit different from that to which the receiver is connected
- Consult the dealer or an experienced radio/TV technician for help

****CAUTION: Changes or modifications not expressly approved by the party responsible for compliance could void the user's authority to operate the equipment.**

11. Technical Support

All inquiries have to be made by e-mail only to the following address:

[mailto: info@stormblue.co.kr](mailto:info@stormblue.co.kr)

Or alternatively, more information, updates and technical support can be found on our web site:

www.stormblue.co.kr

N O T E

The manufacturer is not responsible for any radio or TV interference caused by unauthorized modifications to this equipment. Such modifications could void the user's authority to operate the equipment.

This device complies with part 15 of the FCC Rules. Operation is subject to the following two conditions:

- (1) This device may not cause harmful interference, and
- (2) This device must accept any interference received, including interference that may cause undesired operation.

S DIGITAL INNOVATION
STORM BLUE