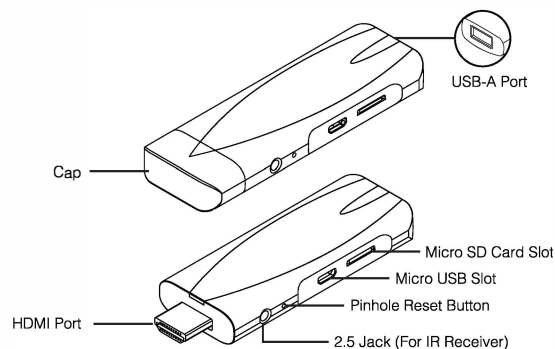


TVSURF



### Quick Installation Guide



#### IMPORTANT SAFETY INFORMATION

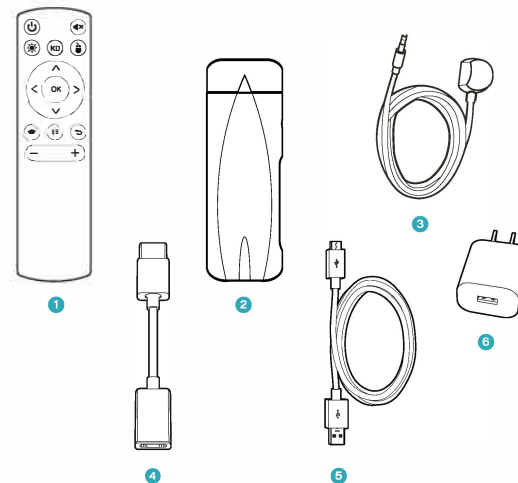
**Caution:** Do not use device if there is obvious damage.  
**Warning:** Choking hazard. This device is not a toy. Keep away from children.

#### Important Instructions Before Use

1. Device should only be used for the intended purpose as outlined in the instructions.
2. Do not expose device to moisture or extreme heat.
3. Do not submerge device underwater. Do not expose to liquid, smoke, or steam.
4. Put cap back on HDMI connector when not in use to avoid damage.

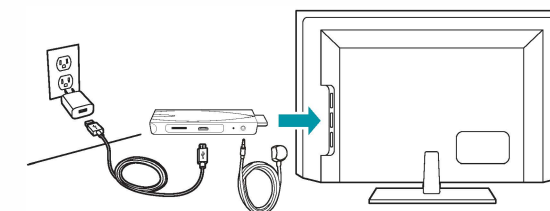
#### Package Contents:

- 1 Remote x 1
- 2 TVSurf 4K Stick x 1
- 3 IR receiver cable x 1
- 4 HDMI extender cable x 1
- 5 Micro USB cable x 1
- 6 Power adapter x 1
- 7 User manual x 1

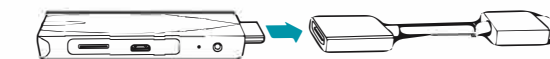


#### Installation Steps:

1. Connect one end of the micro-USB cable into your TVSurf 4K Stick and the other end into the power adapter.
2. Plug the jack of the IR receiver cable into TVSurf and place the IR sensor in the line-of-sight of your remote to point to.
3. Plug your TVSurf 4K Stick into the HDMI port on your TV, then plug the power adapter into a nearby outlet.
4. Turn on your TV, then select the appropriate HDMI input.
5. For 4K streaming, connect the TV Stick to an HDMI HDCP 2.2 port on your 4K TV.

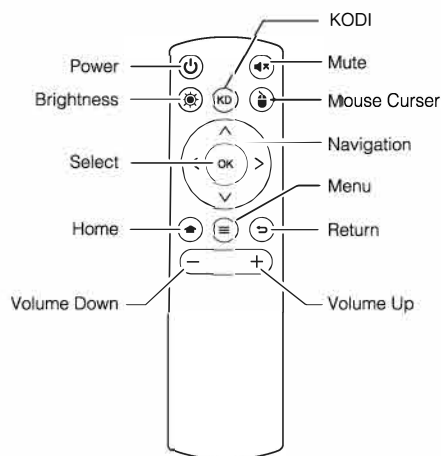
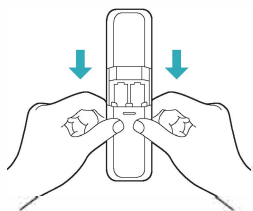


Use the included HDMI extender to improve Wi-Fi and remote performance, or if you have trouble fitting your TVSurf Stick 4K into an HDMI port on your TV.



#### Power up your Remote

1. Open the back of the remote and insert 2 AAA batteries (not included in the package).
2. Follow the on-screen instructions to control the power and volume of your TV.



#### Complete the on-screen setup

Using your Remote, follow the on-screen instructions.  
- Choose your language from the list.  
- Select your Wi-Fi network from the networks displayed on the screen.

**Note:** If your WiFi network is password protected, have your WiFi network password handy to connect your TVSurf 4K Stick to the internet. If your network is hidden, select the "Join Other Network" title from the list. If required, enter your network password using the on-screen keyboard.

#### Tips and Troubleshooting

##### WiFi

- Use the 5GHz band on your wireless router if available for best WiFi performance
- If you see a lock icon, your WiFi network requires a password, so make sure you have it available
- Ensure your Internet is working properly. Restarting your router and modem will solve most WiFi issues
- Do not place your wireless router or TVSurf 4K Stick in a cabinet, as it may impact WiFi signal strength
- Some WiFi issues may be improved by connecting the included HDMI extender

#### TVSurf Android or iOS App

Scan the below QR Code to download the app



For iOS



For Android

#### Technical Specifications

Memory	2GB
Flash	16GB
WiFi	IEEE 802.11
Bluetooth	N/A
HDMI	2.1, Support HDMI CEC, Dynamic HDR and HDCP 2.2, 4Kx2K@75 max resolution output
USB	3.0
Micro USB	2.0
SD Card	Up to 256GB
Power	DC 5V/2A
Size	94 x 34 x 13mm (without cap) 100 x 34 x 13mm (with cap)

**CE** The device complies with the European Directives 2014/30 EU.  
**X** At the end of its service life, this product may not be disposed of in the normal household waste, but rather must be disposed of at a collection point for recycling electrical and electronic devices. The materials are recyclable according to their labelling. You make an important contribution to protecting administration where the appropriate disposal facility is located. Subject to change.

FCC Warning

This device complies with part 15 of the FCC rules. Operation is subject to the following two conditions: (1) this device may not cause harmful interference, and (2) this device must accept any interference received, including interference that may cause undesired operation.

Changes or modifications not expressly approved by the party responsible for compliance could void the user’s authority to operate the equipment.

NOTE: This equipment has been tested and found to comply with the limits for a Class B digital device, pursuant to part 15 of the FCC Rules. These limits are designed to provide reasonable protection against harmful interference in a residential installation. This equipment generates uses and can radiate radio frequency energy and, if not installed and used in accordance with the instructions, may cause harmful interference to radio communications. However, there is no guarantee that interference will not occur in a particular installation. If this equipment does cause harmful interference to radio or television reception, which can be determined by turning the equipment off and on, the user is encouraged to try to correct the interference by one or more of the following measures:

- Reorient or relocate the receiving antenna.
- Increase the separation between the equipment and receiver.
- Connect the equipment into an outlet on a circuit different from that to which the receiver is connected.
- Consult the dealer or an experienced radio/TV technician for help.

Radiation Exposure Statement

To comply with FCC RF exposure compliance requirements, this grant is applicable to only mobile configurations. The antennas used for this transmitter must be installed to provide a separation distance of at least 20cm from all persons and must not be co-located or operating in conjunction with any other antenna or transmitter.