

If you experience a problem that is not noted in this manual, please do not return the product to the store. Our Customer Service Department may have a simple solution to your problem. Please contact us at 1-800-268-6237 or email us at customerservice@summerinfant.com.

FCC Information

This device complies with part 15 of the FCC Rules. Operation is subject to the following two conditions: (1) This device may not cause harmful interference, and (2) this device must accept any interference received, including interference that may cause undesired operation.

CAUTION: Changes or modifications not expressly approved by Summer Infant may void the users authority to operate this equipment.

CAUTION: 1. To comply with FCC RF exposure compliance requirements, a separation distance of at least 20 cm must be maintained between the antenna of this device and all persons. 2. This transmitter must not be co-located or operating in conjunction with any other antenna or transmitter.

Summer Infant, Inc. Monitor Warranty Policy

Summer Infant, Inc. will repair or replace (at our option) your unit free of charge for 12 months from the date of purchase if the unit is defective in workmanship or materials. To claim your repair/replacement, the product must be returned to Summer Infant along with a copy of the original purchase receipt. In the absence of the purchase receipt, the warranty will be 12 months from the date of manufacture. This warranty does not apply to normal wear or damage from misuse, abuse, improper storage and handling, installation, accident, unauthorized repair or alteration. Please contact our Customer Service Department by phone at 1-800-268-6237 or via e-mail at customerservice@summerinfant.com for details.



02230BB

Please read the following instructions and warnings carefully.

Keep this instruction manual for future reference.

Tools required:
screwdriver (not included)

For technical support see back page.

For use with children from birth and up.

! WARNING:

Adult assembly required.
Keep small parts away from children when assembling.



INSTRUCTION MANUAL

PEEK PLUS™ INTERNET BABY MONITOR SYSTEM

! WARNING:

STRANGULATION HAZARD - Keep cord out of baby's reach. NEVER place camera or cords within 3 feet of the crib. Use enclosed Security Clips to help secure cord away from baby's reach. Never use extension cords with AC Adapters. Only use the AC Adapters provided.

System Requirements: At the installation location of your gateway, you need a broadband Internet connection (cable/DSL) with recommended upload speed of 300 bps and/or a wireless router or a cable/DSL modem with an available ethernet/LAN port to properly access and view your cameras, you must have a required browser version Internet Explorer 7.0 or higher, Mozilla Firefox 3.0 or higher, Safari 4.0 or higher, or Google Chrome. Make sure you have the latest version of Adobe Flash Player which you can download at <http://www.adobe.com/support/flashplayer/downloads.html>.



We **LOVE** our customers!
Get to know us at:

www.summerinfant.com

We at Summer Infant stand behind all of our products. If you are not completely satisfied or have any questions, please contact our customer service department at 1-800-268-6237 or customerservice@summerinfant.com (For Europe call +44 (0)208 420 4429 or customerserviceuk@summerinfant.com)

© 2011 Summer Infant, Inc.
Colors and styles may vary.
Please retain information for future reference.
MADE IN CHINA. 5/11

Summer Infant, Inc.
1275 Park East Drive
Woonsocket, RI 02895 USA
1-800-268-6237

Summer Infant Europe, LTD.
Office Suite 6, Second Floor
Bournehall House, Bournehall Road
Bushey, Hertfordshire WD23 3HP UK
+44 (0) 208 420 4429

**Summer Infant
Canadian Office**
1055 Middlegate Road
Mississauga, Ontario,
Canada L4Y3Y4
905-848-2424

⚠️ WARNING:

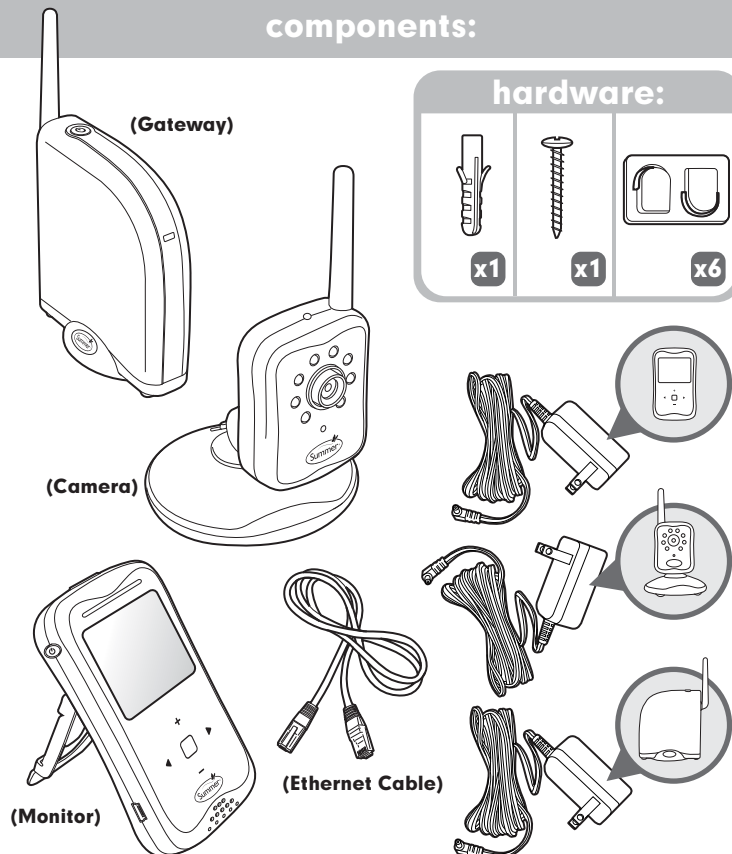
THIS PRODUCT CANNOT REPLACE RESPONSIBLE ADULT SUPERVISION.

- **STRANGULATION HAZARD** - Keep cord out of baby's reach. NEVER place camera or cords within 3 feet of the crib. Use enclosed Security Clips to help secure cord away from baby's reach. Never use extension cords with AC Adapters. Only use the AC Adapters provided.
- When an AC Adapter is plugged into an electrical outlet, do not touch the exposed end.
- Test monitor before first use, periodically, and when changing location of the Camera.
- Do not use monitor near water (such as bathtub, sink, etc.).
- Keep monitor away from heat sources (such as stoves, radiators, etc.).
- Make sure there is proper ventilation around all monitor components. Do not place on sofas, cushions, beds, etc. which may block ventilation.
- Nursery monitors use public airwaves to transmit signals. This monitor may pick up signals from other monitors or similar devices and signals broadcast by this monitor may be picked up by other receivers.
- This product is not a toy. Do not allow children to play with it.
- This product contains small parts. Adult assembly required. Exercise care when unpacking and assembling the product.

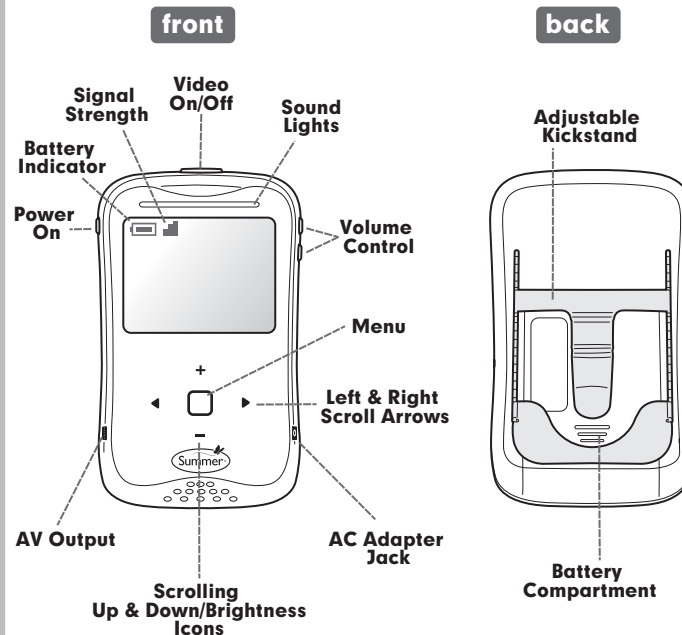
⚠️ BATTERY WARNING:

- Use only the original rechargeable batteries provided. Please contact Summer Infant, Inc. for replacement batteries. Contact information can be found on bottom of these instructions or on the battery itself.
- Do not mix old and new batteries.
- Do not mix alkaline, standard, or rechargeable batteries.
- Batteries are to be inserted with correct polarity.
- Clean battery and product contacts prior to battery installation.
- Do not short-circuit supply terminals.
- Only the recommended batteries or equivalent are to be used, volts and size.
- Remove batteries when product is stored for long periods of time or when batteries are exhausted.
- Dispose of exhausted batteries properly.
- Do not recharge non-rechargeable batteries.
- Rechargeable batteries are only to be charged under adult supervision.
- Keep all batteries away from children.

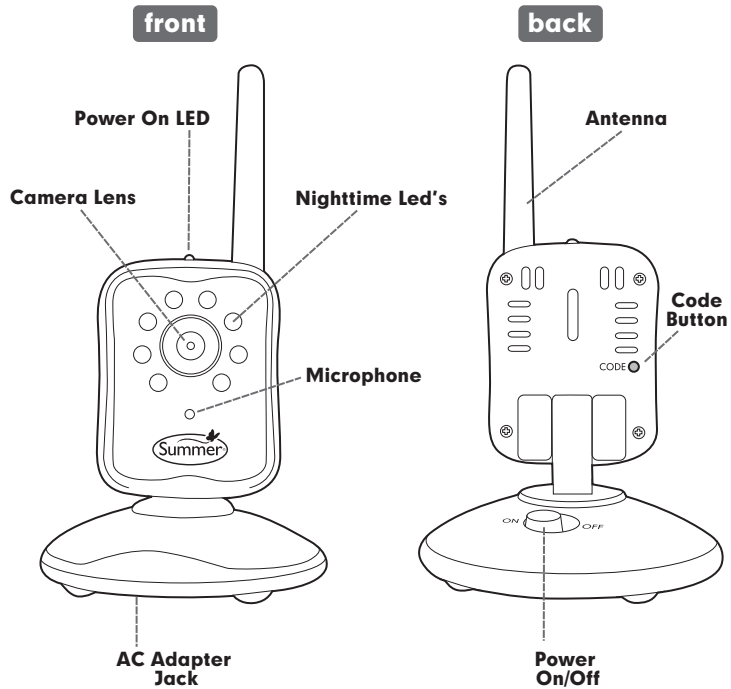
components:



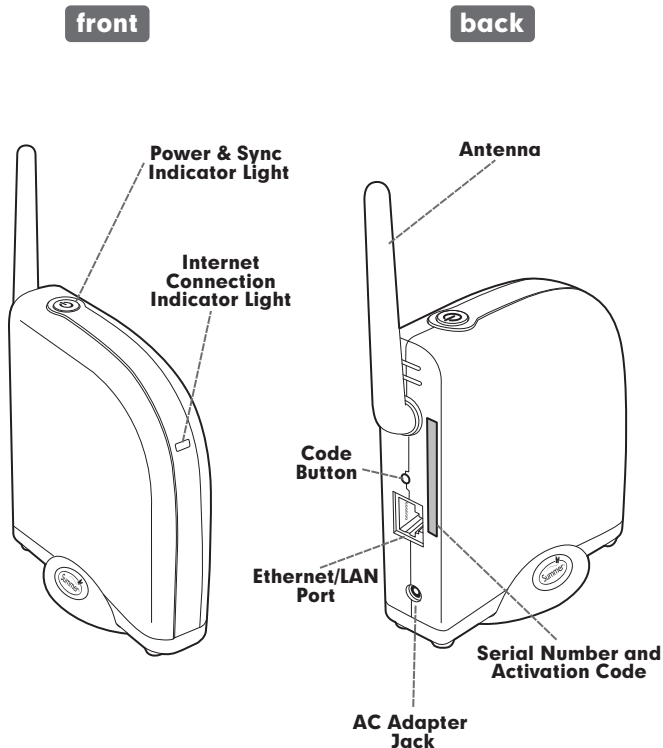
features (monitor):



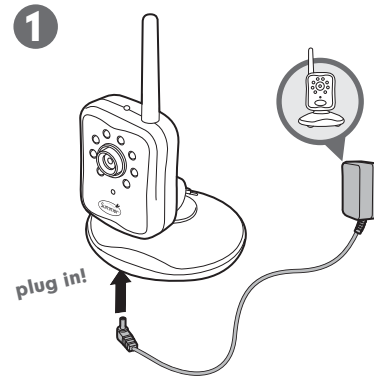
features (camera):



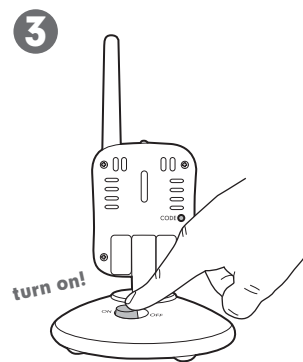
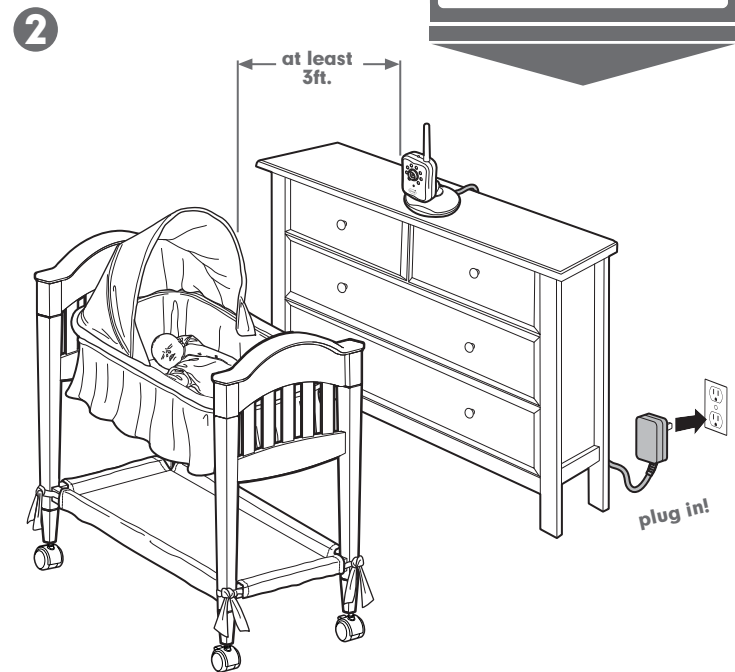
features (gateway):



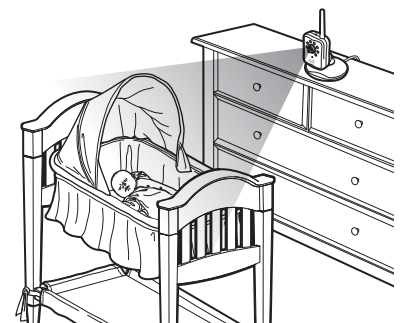
camera set-up (table top):



Determine a location for the CAMERA that will provide the best view of your baby in the crib. Place the CAMERA on a flat surface, such as a dresser, bureau or shelf. NEVER place camera or cords within 3 feet of the crib.

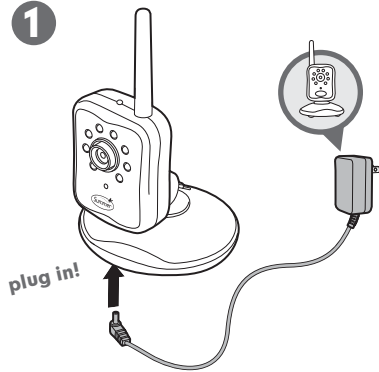


Be sure to test reception and CAMERA positioning.



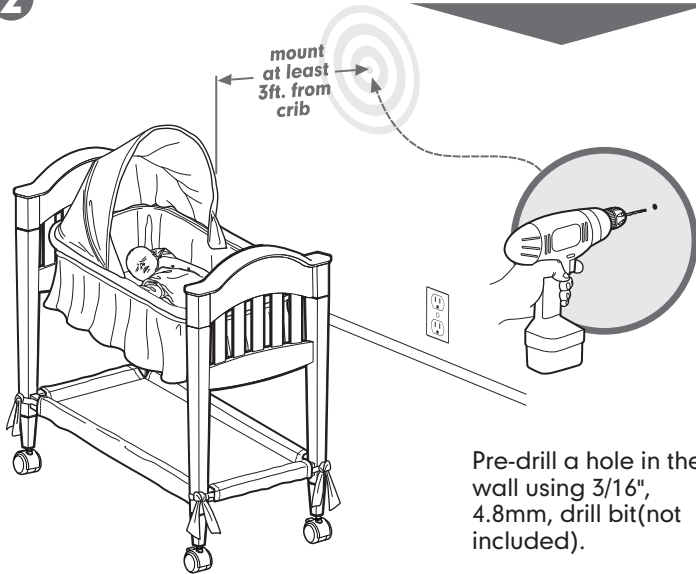
camera set-up (wall mount):

1



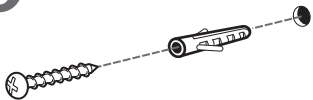
Determine a location to mount the CAMERA to the wall that will provide the best view of your baby in the crib. NEVER place camera or cords within 3 feet of the crib.

2



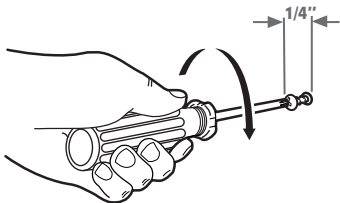
Pre-drill a hole in the wall using 3/16", 4.8mm, drill bit (not included).

3

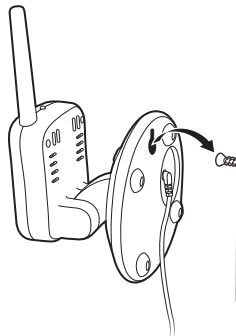


4

Tighten screw until only 1/4" (6.2mm) of the screw is exposed.

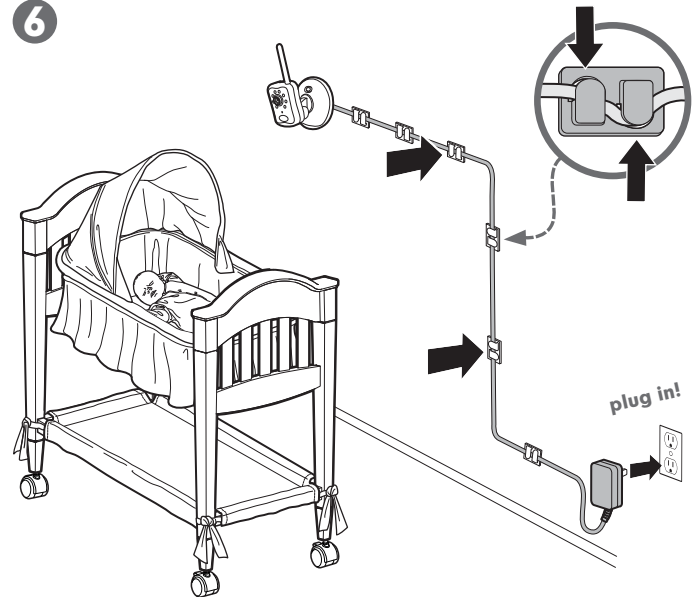


5



camera set-up (wall mount):

6

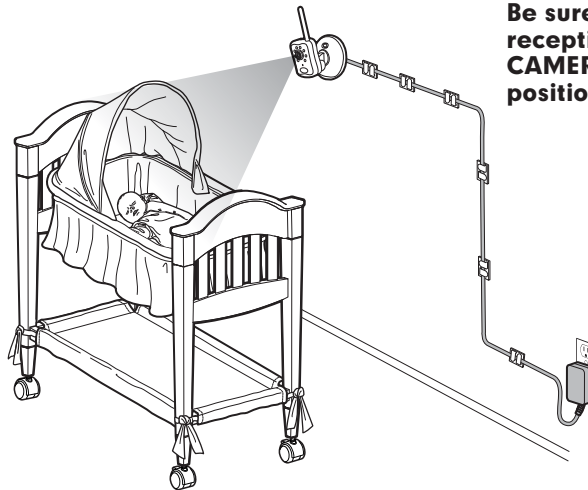


Secure the cord to the wall using the 6 **Security Clips** included to keep cord away from baby's reach.

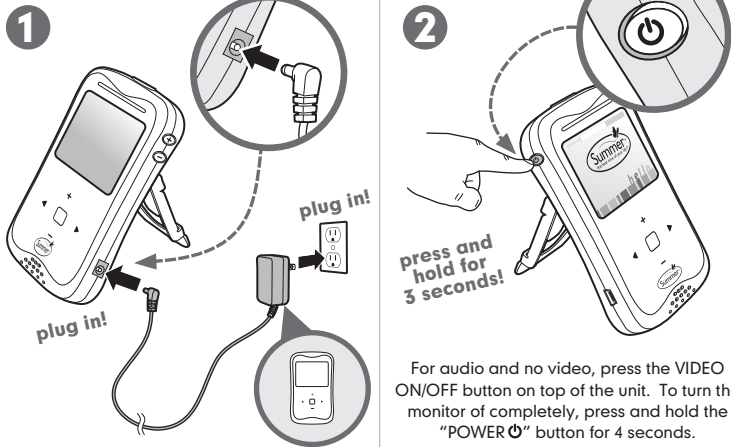
7



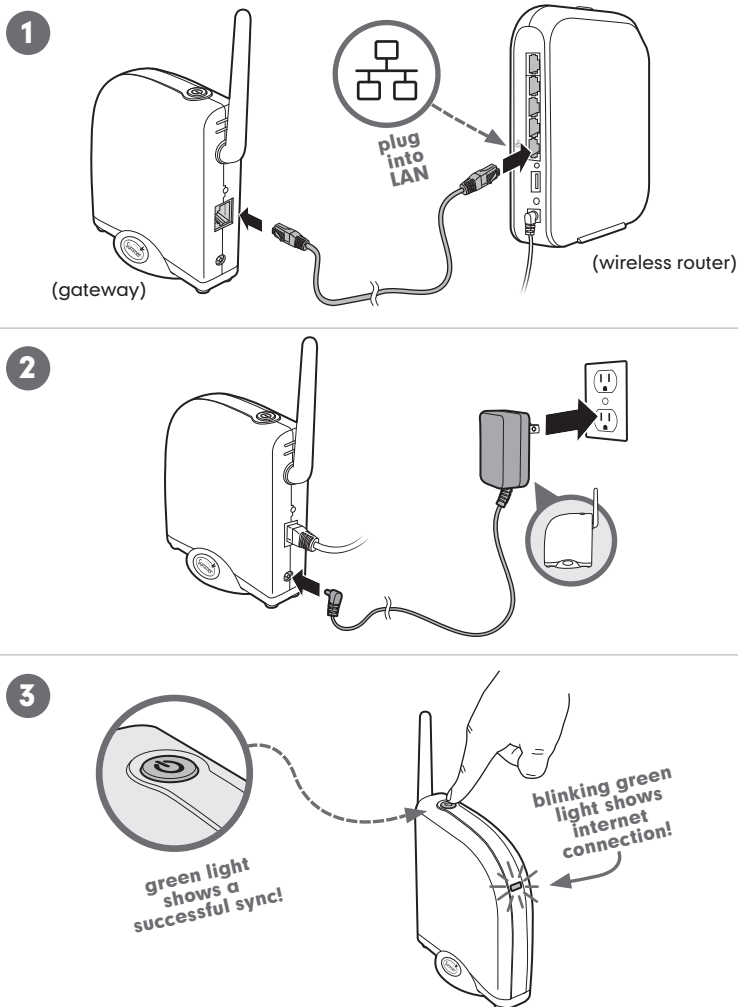
Be sure to test reception and CAMERA positioning.



monitor set-up:

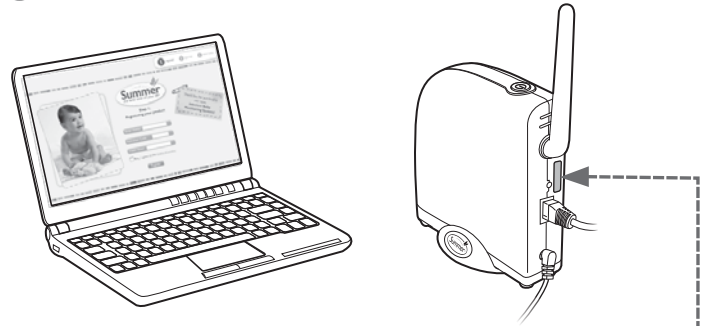


gateway set-up:



getting started online:

1 Visit www.summerinfant.com/internetviewable/activate.



Locate your product's Serial Number and Activation code located on the back of your gateway. You will use this to activate your account.

image of Serial Number Sticker

2



All fields are required to be filled in.

Serial Number [.....]

Activation Code [.....]

Child's Name [.....]

Yes, I agree to the [terms of service](#).

Register

click!

3

1 activation 2 sign-up 3 view baby

Summer
the best time of your life

Step 2:
Signing Up

Thank You for purchasing
our new
Internet Baby
Monitoring System!

Email Address

Choose a password

Confirm password

Choose a security question:

Answer to your security question

Sign-In

Email Address

Choose a password

Confirm password

Choose a security question:
What was your childhood nickname?

Answer to your security question:

Sign-In  **click!**

All fields are required to be filled in.

4

1 activation 2 sign-up 3 view baby

Summer
the best time of your life

Step 3:
Email confirmation

A confirmation email will be sent to your email address here in a few moments. Please follow the link listed in the email to access live video of your child.

Thank you for Activating

COMPLETE ACTIVATION AND BEGIN LIVE VIEWING OF YOUR CHILD! A confirmation email will be sent to you in a few moments. Please follow the link listed in the email to access live video of your child.

signing in after activation:

1 Visit www.summerinfant.com/internetviewable

1 activation 2 sign-up 3 view baby

Summer
the best time of your life

Email Address

Password forgot password?

Sign-In

Welcome!

Email Address

Password forgot password?

Sign-In  **click!**

2 Enter email address and password then click "sign-in"

Share log-in information with friends and family for live viewing enjoyment. Peek Plus allows up to three people to be logged into internet viewing at one time.

understanding user icons:



Refresh



Full Screen



Settings



Logout

1 activation 2 sign-up 3 view baby

Summer
the best time of your life

Baby Name
Time Date

Volume Brightness Contrast



Volume



Brightness



Contrast

automatic logout:

Internet Viewing System will automatically logout after 5 minutes of inactivity. You will receive a visual and audible indicator to alert you one minute prior to logout. Click "yes" to continue normal viewing.



Are You Still Watching?

Yes

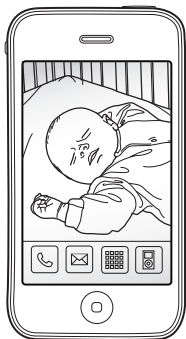
click!

viewing on smart phone:

Might want a little info about smart phone usage.



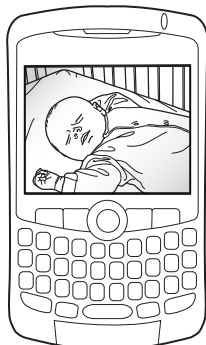
Look for our app  in the Apple (iPhone®), Google (Android®), and Blackberry (Blackberry®) marketplaces.



Apple
(iPhone®)




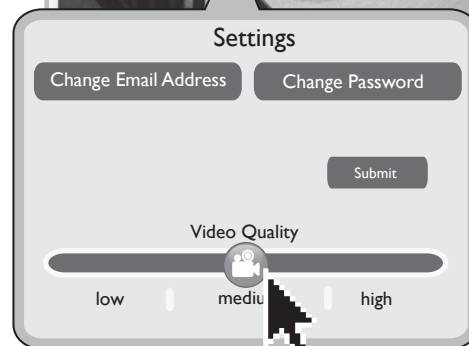
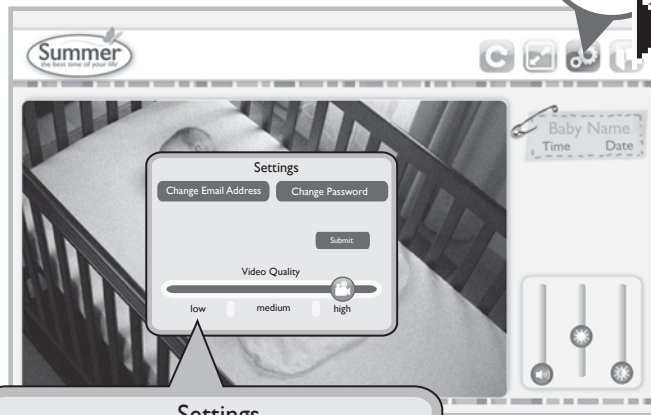
Google
(Android®)



Blackberry
(Blackberry®)

adjusting video quality:

- 1 Click the "Settings Icon"  to change your user settings.



2

Click the "low, medium, or high" button.

Your default video quality will be set to high. If you experience freezing or delays you can adjust your video quality to medium or low.

testing your initial setup:

Be sure to test your Monitor's reception before initial use. We also recommend testing your Monitor's reception periodically.

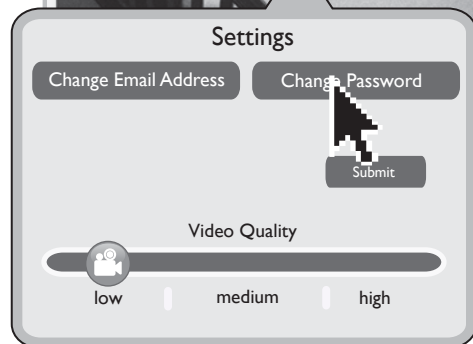
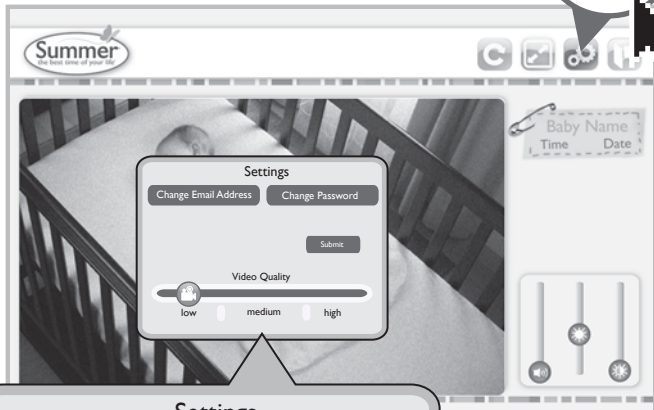
PLEASE KEEP IN MIND THAT THE PEEK PLUS™ INTERNET BABY MONITORING SYSTEM WILL NOT PROVIDE THE SAME LEVEL OF PICTURE QUALITY AS YOUR TELEVISION WITH CABLE, SATELLITE DISH, OR DIGITAL SERVICE.

To test reception you will need two adults. One adult should view the picture on the Monitor while the other is in the nursery to adjust the Camera. Often the quality of the reception can be improved by slightly repositioning the Camera, Monitor, or both. Make sure to move monitor away from other monitors, cordless phones, walkie-talkies, ect. It may help to place a stuffed animal or doll in the crib to simulate the position and size of your baby. Adjust the picture quality on the Monitor as needed by using the Brightness Adjustment "+" and "-" on the front of the Monitor.

To test sound quality, have one adult speak in both a normal tone and a whisper near the crib. Adjust volume on the Monitor's Volume Adjustment as needed.

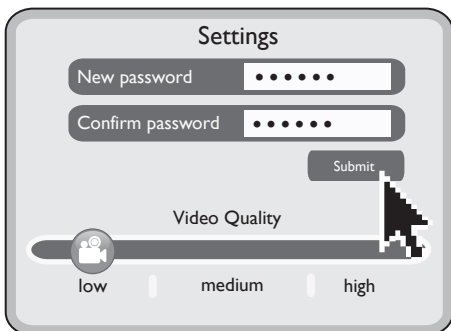
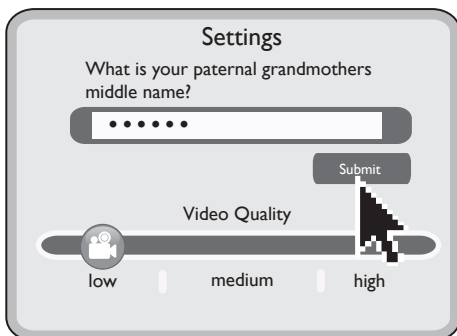
resetting your password:

- 1 Click the "Settings Icon" to change your user settings.



- 2 Click the "Change Password" button.

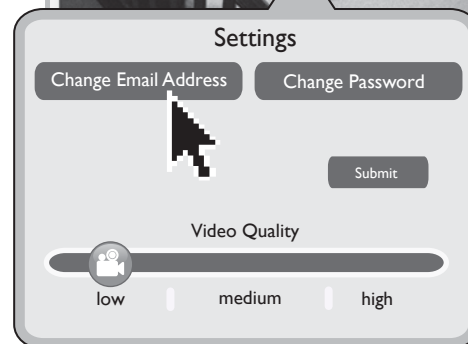
- 3 Enter the answer to your security question then click "Submit".



- 4 Enter new password. Re-enter password in the space below then click "Submit".

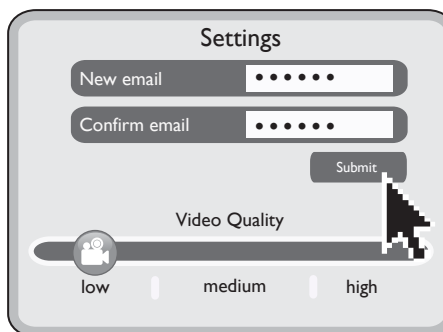
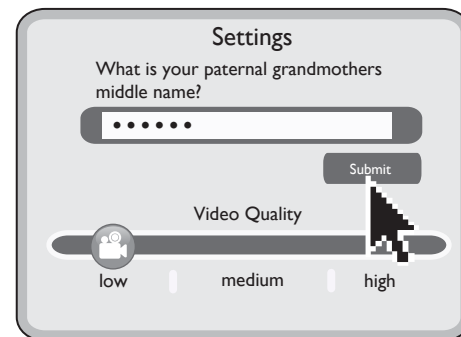
resetting you email:

- 1 Click the "Settings Icon" to change your user settings.



- 2 Click the "Change Email Address" button.

- 3 Enter the answer to your security question then click "Submit".



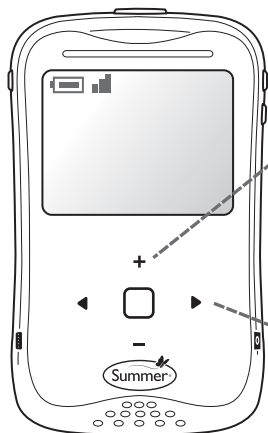
- 4 Enter new email address. Re-enter email in the space below then click "Submit".

special features for camera:

- **Sound Lights:** The five Sound Lights will illuminate on the Monitor depending on the level of your baby's sounds. For example, if your child is just cooing, only one or two lights will illuminate. If your baby is crying, several will illuminate, depending on how loud she is crying. This feature is particularly helpful if you are in a noisy room.
- **Night Vision:** In a darkened room, the Camera will automatically use its infrared LED's to transmit a black and white image of your baby, so you can see your child at night.
- **Multi-Position Camera/Microphone:** The Camera/Microphone should be positioned so it is facing baby as directly as possible. The multi-directional microphone, a feature unique to Summer Infant monitors, will automatically focus on the baby's voice while filtering out ambient noise.

special features for monitor:

- **Touch-Sensitive Control Pad:** The monitor is equipped with a touch-sensitive control panel. Tap "menu" button on the monitor to activate control panel. Control panel illumination will turn off after 2 seconds.
- **Video On/Off Button:** While operating on battery power, the video screen will go to sleep, to conserve battery power. Audio and sound lights will function normally. Press the Video On/Off button to resume viewing.
- **Kickstand:** The monitor has a built in kickstand for table top convenience. Simply flip out the kickstand and place the monitor on a flat, even surface for easy viewing.
- **Belt Clip:** For convenience and portability, you can clip the Monitor to your belt or waistband.



- **Volume:** Press the "+ and -" buttons, located on the monitor's side, to increase and decrease volume levels.
- **Brightness:** Tap "menu" button on the monitor to activate control panel. Use the "+ and -" buttons on the touch-sensitive control pad to adjust the screen's brightness.
- **Scrolling Arrows:** Use the scrolling arrows "◀ and ▶" to navigate through the menu.

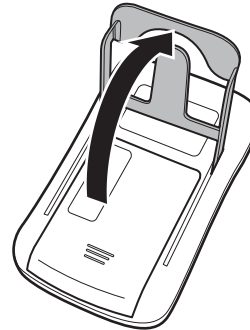
battery use and installation:

To Use the Video Monitor in Portable Mode:

For use in portable mode, the Monitor requires 1 3.7V LITHIUM-ION rechargeable battery (included).

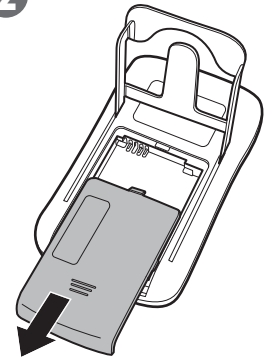
- To charge battery, plug the AC Adapter into the Monitor's AC Adapter Jack. Plug the other end into a standard electrical outlet.
- To achieve optimal battery life, charge battery (12-16 hours) and leave unplugged until power LED turns amber, indicating low battery.
- **Note:** constant recharging of your battery before low battery indicator comes on will decrease the life of your batteries.
- Remove battery during long periods of non-use.
- If battery is no longer receiving optimal charge (i.e. decreased monitor life), remove and replace with a new battery by visiting www.summerinfant.com.

1 Monitor: This step is only needed if replacing battery.



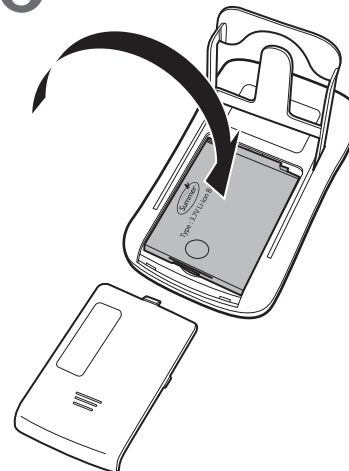
Locate the battery compartment door on back of monitor.

2



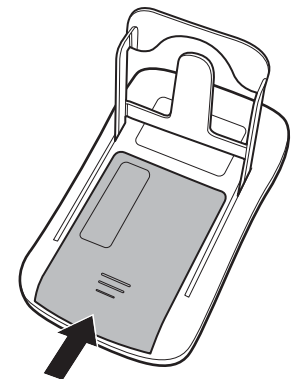
Slide open battery door.

3



Insert battery. Ensure correct connection.

4



Slide battery door back in place.

problem solving/troubleshooting for monitor:

No picture or sound on Monitor

- Make sure the Monitor is turned on
- Make sure the AC Adapters are plugged in
- Make sure the outlets are working
- Make sure Monitor and Camera are SYNCHED up.

Sound but no picture on Monitor

- Press the Video On/Off Button once to turn on video mode
- Try adjusting the Brightness Control on the Monitor
- Test reception by moving the Monitor and/or CAMERA to different locations

Picture but no sound

- Turn up the volume on the Monitor using the Volume Control

Picture not clear

- Position the Monitor closer to the CAMERA if necessary
- Move Monitor away from other monitors, cordless phones, walkie-talkies, etc.
- Try adjusting the Brightness Control on the Monitor
- Test reception by moving the Monitor and/or CAMERA to different locations

Squealing sound

- Move the CAMERA and the Monitor further away from each other

deleting and resyncing camera:

The Monitor and Camera are synched at the factory for privacy reasons. If the Monitor and Camera are not synching with each other for any reason, please sync them as described below.

To Delete Camera:

Step 1: Delete your camera by tapping the control panel to activate. Press menu "□" button to enter the camera menu. Press "+" to highlight "del cam".

Step 2: Press "□" to confirm selection.

Step 3: When camera has been successfully deleted, the Summer logo will appear with a "no signal" message.

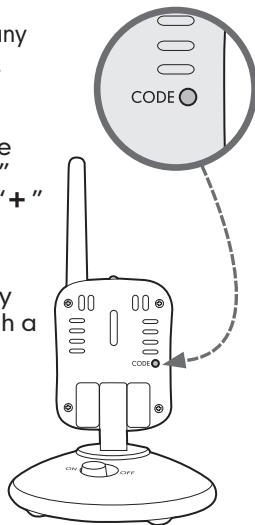
To Resync Camera:

Step 1: Move the Monitor to the same area as the Camera. Make sure that both the Camera and Monitor are powered on.

Step 2: To add a camera, tap the control panel to activate. Press the "menu □" button to enter the camera menu. Press "□" again to select "Add Cam". Power LED will begin to blink rapidly.

Step 3: Press the code button on back of Camera to synch (see illustration).

Step 4: Once synched, a picture from the newly added Camera will appear on Monitor screen. Camera's power LED will stop blinking.



problem solving/troubleshooting for gateway:

Make sure you meet system requirements

- At the installation location of your gateway, you need a broadband Internet connection (cable/DSL) with recommended upload speed of 300 bps and a wireless router and or a cable/DSL modem with an available ethernet/LAN port to properly access and view your cameras, you must have a required browser version Internet Explorer 7.0 or higher, Mozilla Firefox 3.0 or higher, Safari 4.0 or higher, or Google Chrome. Make sure you have the latest version of Adobe Flash Player which you can download at: <http://www.adobe.com/support/flashplayer/downloads.html>

Gateway is not connecting to the internet

- Make sure that your gateway Ethernet cable is plugged into the LAN port of your router and confirm that the green internet light on the front of the gateway is blinking. The power light should be green to show that your gateway is powered on and successfully synched with your camera. If the power light is red, this indicates that your gateway is no longer synched with your camera. Refer to synching monitor and gateway section below.

nonresponsive gateway resyncing:

The Camera and Gateway are synched at the factory for privacy reasons. If the Camera and Gateway are not synching with each other for any reason, please sync them as described below.

To Resync Gateway:

Step 1: Move the Monitor to the same area as the Gateway. Make sure that both the Gateway and Monitor are powered on.

Step 2: Press the code button on back of gateway to synch (Figure A).

Step 3: Once synched successfully, synched power LED on gateway will turn green (Figure B)

