

3 USING THE HANDHELD (continued)

Camera Options Menu

Press the **MENU** button. Touch the **CAMERA** icon in the touchscreen. Scan, view cam, add cam, and delete cam icons will appear on the bottom of the screen.

- Scan
- View Cam
- Add Cam
- Delete Cam

Scanning Cameras

When using multiple cameras, go into scan mode by touching the **SCAN** icon. Scanning cameras will begin. Scan icon will appear in the lower right-hand corner of the screen cycling through each active camera every 8 seconds. To stop scanning, tap the anywhere on the screen.

Select Camera

Touch the **SELECT CAMERA** icon. Touch **NUMBER** icon to select an available camera (blue color indicates powered-on, within-range, or paired cameras).

Selected camera's view will appear on the handheld screen. An icon showing camera number will appear in the lower right-hand corner of the screen for 3 seconds. Camera number on indicator bar will change to selected camera.

Adding a Camera:

Follow instructions and warnings to set up and turn on additional camera. Touch the **ADD CAMERA** icon in the camera options menu. Synced cameras are shown as colored icons. Non-synced cameras are shown in gray. Touch camera to add. Once gray camera number icon has been pressed, add button and signal button light up. When camera is synced, signal bar stays on and check mark icon appears. Touch the check mark icon to exit out of add camera mode.

(Note: This product can accept up to 4 cameras and operates on audio and video auto-scan to view each camera on an 8-second rotation. To order an additional camera (Item #29970), please contact our Consumer Relations Team by phone at: 401-671-6551 or via email at: www.summerinfant.com/contact for details.)

Deleting a Camera:

Touch the **DELETE CAMERA** icon. De-select camera to delete. Touch the **CHECK** icon.

Time and Temperature

Press the **MENU** button. Touch the **TIME/TEMP** icon in the touchscreen. Touch the arrows to set the time. Select either Fahrenheit or Celsius. Select either 12hr or 24hr clock setting. Press **CHECK** icon to accept changes.

FCC INFORMATION

This device complies with part 15 of the FCC Rules. Operation is subject to the following two conditions: (1) This device may not cause harmful interference, and (2) this device must accept any interference received, including interference that may cause undesired operation.

CAUTION: Changes or modifications not expressly approved by Summer Infant may void the users authority to operate this equipment.

NOTE: This equipment has been tested and found to comply with the limits for a Class B digital device, pursuant to part 15 of the FCC Rules. These limits are designed to provide reasonable protection against harmful interference in a residential installation. This equipment generates, uses and can radiate radio frequency energy and, if not installed and used in accordance with the instructions, may cause harmful interference to radio communications. However, there is no guarantee that interference will not occur in a particular installation. If this equipment does cause harmful interference to radio or television reception, which can be determined by turning the equipment off and on, the user is encouraged to try to correct the interference by one or more of the following measures:

- Reorient or relocate the receiver
- Increase the separation between the equipment and the receiver
- Connect the equipment into an outlet on a circuit different from that to which the receiver is connected.
- Consult the dealer or an experienced radio/TV technician for help

CAUTION: 1. To comply with FCC RF exposure compliance requirements, a separation distance of at least 20 cm must be maintained between the antenna of this device and all persons. 2. This transmitter must not be co-located or operating in conjunction with any other antenna or transmitter.

Summer Infant, Inc. Monitor Warranty Policy

Summer Infant, Inc. will repair or replace (at our option) your unit free of charge for 12 months from the date of purchase if the unit is defective in workmanship or materials. To claim your repair/replacement, the product must be returned to Summer Infant along with a copy of the original purchase receipt. In the absence of the purchase receipt, the warranty will be 12 months from the date of manufacture. This warranty does not apply to normal wear or damage from misuse, abuse, improper storage and handling, installation, accident, unauthorized repair or alteration. Please contact our Customer Service Department by phone at 401-671-6551 or via e-mail at summerinfant.com/contact for details. For sale and use in the USA. The warranty is null and void if used outside its intended territory.

PROBLEM SOLVING

No picture or sound

- Make sure the camera and handheld monitor unit are turned on
- Make sure the camera and handheld monitor unit are paired
- Make sure the AC adapters are plugged in
- Make sure the outlets are working

Sound but no picture

- Press the Zoom/Video Button once to turn on video mode
- Check to make sure nothing is blocking the camera
- Test reception by moving the handheld unit and/or camera to different locations
- Make sure the camera and handheld monitor unit are paired.

Picture but no sound

- Power the handheld completely off, then turn handheld back on.
- Turn up the volume using Volume Control.

Picture not clear

- Position the handheld unit closer to the camera.
- Move the handheld unit away from other electronic devices, cordless phones, etc.
- Adjust the brightness using the Brightness Control
- Test reception by moving the handheld unit and/or camera to different locations
- Place camera 6 to 8 ft. from crib for optimized focus. Make sure to follow instructions and warnings for camera placement.

Squealing sound coming from speaker on Handheld Unit

- Move the handheld unit and camera further away from each other
- Turn the volume down using Volume Control
- Power the handheld completely off, remove and re-insert the battery then turn handheld back on.

Video keeps coming on when screen should be off

- Follow instructions to turn off Vox feature

Handheld is beeping

- If no video, turn on camera.
- If battery is low, charge battery.

Temperature listed as LL or HH

- Room temperature is outside of the thermometer limits. The thermometer is effective in between 32°F – 100°F (0°C – 38°C). If you receive a false error message, please contact our consumer relations.

Camera isn't syncing with handheld

- Delete camera and add it back.

SleepZone™ frequent alerts

- Adjust size of boundary box or zoom out so there is room for your child to move a little without setting off alerts
- Check for objects casting shadows into the SleepZone boundary area

SleepZone™ not sounding alerts

- Check to make sure that SleepZone feature is activated and that motion is occurring across the boundary box
- Increase volume of SleepZone alerts

If you experience a problem that is not noted in this manual, please do not return the product to the store. Our Customer Service Department may have a simple solution to your problem. Please contact us at 401-671-6551 or email us at summerinfant.com.

CONTACT

Summer Infant stands behind all of its products. If you are not completely satisfied or have any questions, please contact our Consumer Relations Team at **401-671-6551** or www.summerinfant.com

Summer Infant, Inc.
1275 Park East Drive
Woonsocket, RI 02895
401-671-6551

© 2017 Summer Infant, Inc. Colors and styles may vary. Please retain information for future reference. **MADE IN CHINA.** 9/17

REPLACEMENT PARTS

REPLACEMENT PARTS

If you need to order a replacement part or want to order an Extra Camera, you can contact our Consumer Relations Department at **401-671-6551** or via email at www.summerinfant.com

- Extra Camera: #29970
- Camera AC Adapter: #29580-05
- Handheld AC Adapter: #29580-13
- Handheld rechargeable Ni-MH battery pack: #29580-10

Tools required for wall mount: Screwdriver and drill (not included). For adult use only.

WARNING:

Adult assembly required. Keep small parts away from children when assembling.

WARNING:

THIS PRODUCT CANNOT REPLACE RESPONSIBLE ADULT SUPERVISION.

- **STRANGULATION HAZARD** - Children have STRANGLED in cords. Keep this cord out of reach of children (more than 3 feet (0.9 m) away from the crib). Use enclosed Security Clips to help secure cord away from baby's reach. Never use extension cords with AC Adapters. Only use the AC Adapters provided.
- When an AC Adapter is plugged into an electrical outlet, do not touch the exposed end.
- Test monitor before first use, periodically, and when changing location of the Camera.
- Do not use monitor near water (such as bathtub, sink, etc.).
- Keep monitor away from heat sources (such as stoves, radiators, etc.).
- Make sure there is proper ventilation around all monitor components. Do not place on sofas, cushions, beds, etc. which may block ventilation.
- This product is not a toy. Do not allow children to play with it.
- This product contains small parts. Adult assembly required. Exercise care when unpacking and assembling the product.

BATTERY WARNING:

- Use only the original rechargeable battery provided. Please contact Summer Infant, Inc. for replacement battery. Contact information can be found on the back page of these instructions or on the battery itself.
- Do not short-circuit supply terminals.
- Only the recommended battery or equivalent are to be used, volts and size.
- Remove battery when product is stored for long periods of time or when battery is exhausted.
- Dispose of exhausted battery properly.

ISED/C Warning

This device complies with Innovation, Science, and Economic Development Canada licence-exempt RSS standard(s). Operation is subject to the following two conditions:

- (1) this device may not cause interference, and
- (2) this device must accept any interference, including interference that may cause undesired operation of the device.

Le présent appareil est conforme aux CNR d'Industrie Canada applicables aux appareils radio exempts de licence. L'exploitation est autorisée aux deux conditions suivantes : (1) l'appareil ne doit pas produire de brouillage, et (2) l'utilisateur de l'appareil doit accepter tout brouillage radioélectrique subi, même si le brouillage est susceptible d'en compromettre le fonctionnement

The device is compliance with RF exposure guidelines, users can obtain Canadian information on RF exposure and compliance. The minimum distance from body to use the device is 20cm.

Le présent appareil est conforme

Après examen de ce matériel aux conformité ou aux limites d'intensité de champ RF,

les utilisateurs peuvent sur l'exposition aux radiofréquences et la conformité et compliance d'acquérir les informations correspondantes. La distance minimale du corps à utiliser le dispositif est de 20cm.

IMPORTANT SAFETY INSTRUCTIONS

- 1) Read Instructions - All the safety and operating instructions should be read before the product is operated.
- 2) Retain Instructions - The safety and operating instructions should be retained for future reference.
- 3) Heed Warnings - All warnings on the product and in the operating instructions should be adhered to.
- 4) Follow Instructions - All operating and use instructions should be followed.
- 5) Cleaning - Unplug this product from the wall outlet before cleaning. Do not use liquid cleaners or aerosol cleaners. Use a damp cloth for cleaning.
- 6) Attachments - Do not use attachments not recommended by the product manufacturer as they may cause hazards.
- 7) Water and Moisture - Do not use this product near water - for example, near a bath tub, wash bowl, kitchen sink, or laundry tub; in a wet basement; or near a swimming pool; and the like.
- 8) Accessories - Do not place this product on an unstable cart, stand, tripod, bracket, or table. The product may fall, causing serious injury to a child or adult, and serious damage to the product. Use only with a cart, stand, tripod, bracket, or table recommended by the manufacturer, or sold with the product. Any mounting of the product should follow the manufacturer's instructions, and should use a mounting accessory recommended by the manufacturer.
- 9) Ventilation - Slots and openings in the cabinet are provided for ventilation and to ensure reliable operation of the product and to protect it from overheating, and these openings must not be blocked or covered. The openings should never be blocked by placing the product on a bed, sofa, rug, or other similar surfaces. This product should not be placed in a built-in installation such as a bookcase or rack unless proper ventilation is provided or the manufacturer's instructions have been adhered to.
- 10) Power Sources - This product should be operated only from the type of power source indicated on the marking label. If you are not sure of the type of power supply to your home, consult your product dealer or local power company. For products intended to operate from battery power, or other sources, refer to the operating instructions.
- 11) Power-Cord Protection - Power-supply cords should be routed so that they are not likely to be walked on or pinched by items placed upon or against them, paying particular attention to cords at plugs, convenience receptacles, and the point where they exit from the product.
- 12) Power Lines - An outside antenna system should not be located in the vicinity of overhead power lines or other electric light or power circuits, or where it can fall into such power lines or circuits. When installing an outside antenna system, extreme care should be taken to keep from touching such power lines or circuits as contact with them might be fatal.
- 13) Overloading - Do not overload wall outlets, extension cords, or integral convenience receptacles as this can result in a risk of fire or electric shock.
- 14) Object and Liquid Entry - Never push objects of any kind into this product through openings as they may touch dangerous voltage points or short-out parts that could result in a fire or electric shock. Never spill liquid of any kind on the product.
- 15) Servicing - Do not attempt to service this product yourself as opening or removing covers may expose you to dangerous voltage or other hazards. Refer all servicing to qualified service personnel.
- 16) Damage Requiring Service - Unplug this product from the wall outlet and refer servicing to qualified service personnel under the following conditions:
 - a) When the power-supply cord or plug is damaged,
 - b) If liquid has been spilled, or objects have fallen into the product,
 - c) If the product has been exposed to rain or water,
 - d) If the product does not operate normally by following the operating instructions. Adjusting only those controls that are covered by the operating instructions as an improper adjustment of other controls may result in damage and will often require extensive work by a qualified technician to restore the product to its normal operation,
 - e) If the product has been dropped or damaged in any way, and
 - f) When the product exhibits a distinct change in performance - this indicated a need for service.
- 17) Replacement Parts - When replacement parts are required, be sure the service technician has used replacement parts specified by the manufacturer or have the same characteristics as the original part. Unauthorized substitutions may result in fire, electric shock, or other hazards.
- 18) Safety Check - Upon completion of any service or repairs to this product, ask the service technician to perform safety checks to determine that the product is in proper operating condition.
- 19) Wall or Ceiling Mounting - The product should be mounted to a wall or ceiling only as recommended by the manufacturer.
- 20) Heat - The product should be situated away from heat sources such as radiators, heat registers, stoves, or other products (including amplifiers) that produce heat.



BABY PIXEL™

5.0" touchscreen color video monitor

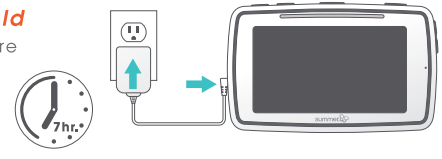
- TOUCH SCREEN
- REMOTE STEERING
- DIGITAL PRIVACY
- TEMP DISPLAY
- TALK-BACK TO BABY

Thank you for purchasing the Baby Pixel™ Digital Color Video Monitor by Summer Infant. Please read the following instructions and warnings carefully. Keep this instruction manual for future reference.

1 SET-UP

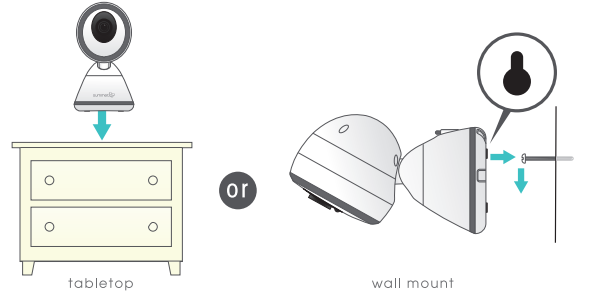
Charge the Handheld

Charge for 7 hours before first use.



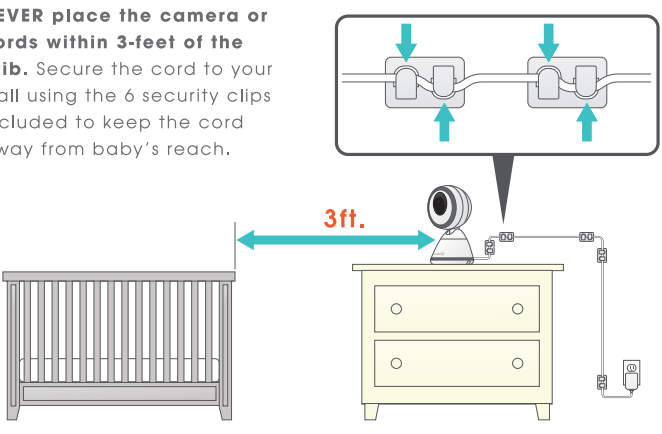
Install the Camera

For best picture focus, place camera 6 to 8 ft. from crib. Plug in camera. Place camera on a flat surface, such as a tabletop, or shelf or mount the camera on a wall using the screw and wall anchor provided.



Secure the Camera Cord

NEVER place the camera or cords within 3-feet of the crib. Secure the cord to your wall using the 6 security clips included to keep the cord away from baby's reach.



Read all warnings prior to using this product.

⚠ WARNING

STRANGULATION HAZARD: Children have strangled in cords. Keep this cord out of the reach of children (more than 3 ft. (0.9m) away).

1 SET-UP (continued)

Power on the Camera and Handheld

Press the power/nightlight button on the camera and hold for 3 seconds. A green light will appear near the lens.



Press and hold the power button on the handheld unit for 3 seconds. The handheld will automatically sync with the camera. (The handheld unit and the camera are paired at the factory for privacy reasons. If the handheld and camera are not paired with each other for any reason, see **Adding a Camera** in the user guide.)

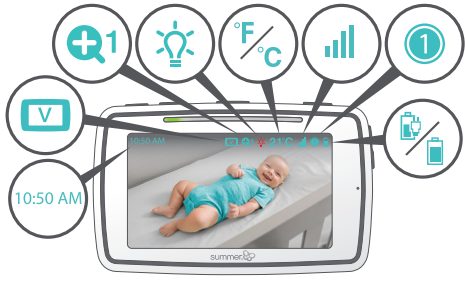


Congratulations! You are now ready to use your Baby Pixel™ Digital Color Video Monitor!

2 SCREEN ICONS & FUNCTION BUTTONS

Screen Icons

- Clock 12/24 HR
- Vox Indicator
- Zoom
- Nightlight
- Temperature
- Reception
- Camera Selection
- Battery Life/ Plugged In



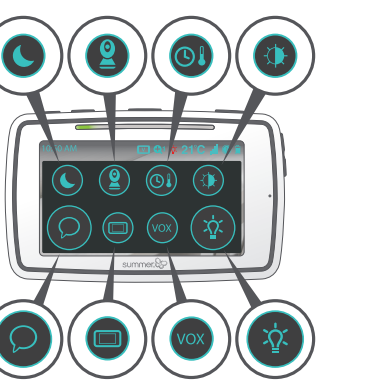
Function Buttons

- Power/Menu
- Moonlite™
- Zoom/Video
- Camera Steering
- Volume



Touch Screen Function Buttons

- Moonlite™ Brightness
- Camera Options
- Time / Temp Settings
- Screen Brightness
- Talk-back
- SleepZone™
- Vox on / off
- Nightlight



3 USING THE HANDHELD

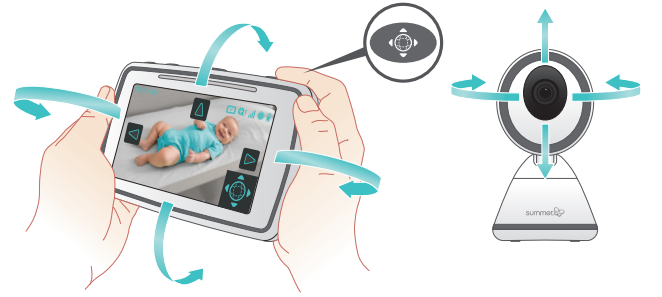
Volume

Use the up/down arrow buttons to increase and decrease the volume.



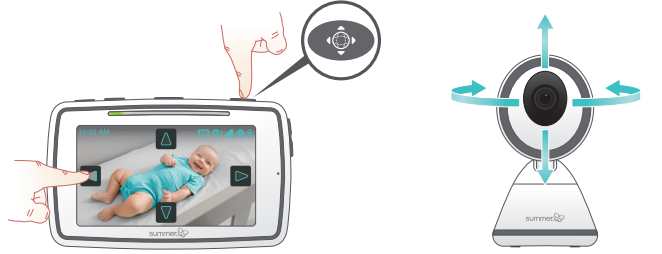
360Tilt™ Camera Steering

Press and hold the camera steering button. This feature allows you to control the camera viewing position remotely by tilting the handheld backward and forward and side to side. The camera will replicate the position of the handheld until you release the button.



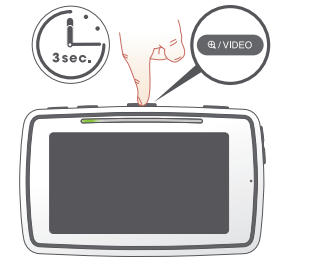
Touchscreen Camera Steering

Tap the camera steering button once. Four camera steering arrows will appear on the screen. Touch or hold the arrows to reposition the camera.



Video On/Off Power Save

To conserve battery power, press and hold the VIDEO button for 3 seconds to turn off the handheld's video. The screen will go dark. This feature allows you to preserve battery life when not plugged into A/C adapter. The audio feature will remain activated allowing you to monitor sounds. You can turn the screen back on by pressing the video button or tapping the screen or moving the handheld. When handheld is not plugged in, screen will automatically turn off after 30 seconds.



Moonlite™ Night Vision Boost

The Moonlite™ Night Vision Boost feature is to help provide better viewing of your baby, temporarily, when the room is dark. Press and hold the MOONLITE button to illuminate a small LED light on the camera. A MOONLITE icon will appear in the lower right-hand corner of the screen while button is pressed. When you release the button, the camera will return to normal black & white night vision. Moonlite will automatically turn off after several seconds. Depending on how far you have placed the camera from the crib, you can optionally adjust the MOONLITE brightness.



Moonlite™ Brightness Adjustment

Press the MENU button. Touch the MOONLITE icon in the touchscreen. Press either the plus or minus icon to adjust the moonlight brightness. Caution: Do not stare directly at Moonlite LED for prolonged periods of time.



Sound Activated Lights

The LED light bar on the top of the handheld will light up as it picks up noises, even in power save mode. When battery is low, the first LED flashes red and handheld beeps.



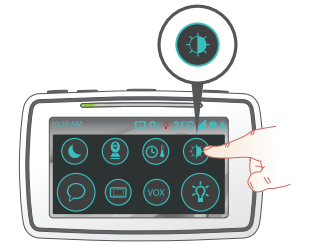
Menu/Power

Press the MENU/POWER button to access the touchscreen menu features screen. Press and hold the MENU/POWER button for 3 seconds to turn off handheld.



Brightness

Press the MENU button. Touch the BRIGHTNESS icon in the touchscreen menu. Press either the plus or minus icon to adjust brightness.



Talkback

Press the MENU button. Touch and hold the TALKBACK icon in the touchscreen. You can speak with your baby.



Release the button when done talking to the baby. The icon will reduce down to the smaller talkback icon. The TALKBACK icon will remain on the screen for 10 seconds. You can begin talking again by pressing and holding the icon within that time. To exit talk-back mode, press the menu button once or wait 10 seconds to automatically exit talk-back mode.

Vox On/Off

The Vox feature, when on, will turn on your screen when it is power save mode and the camera picks up a sound. To turn Vox mode off, press the MENU button. Press the VOX icon. Turn vox alert on or off. Vox icon is displayed on indicator bar when active.

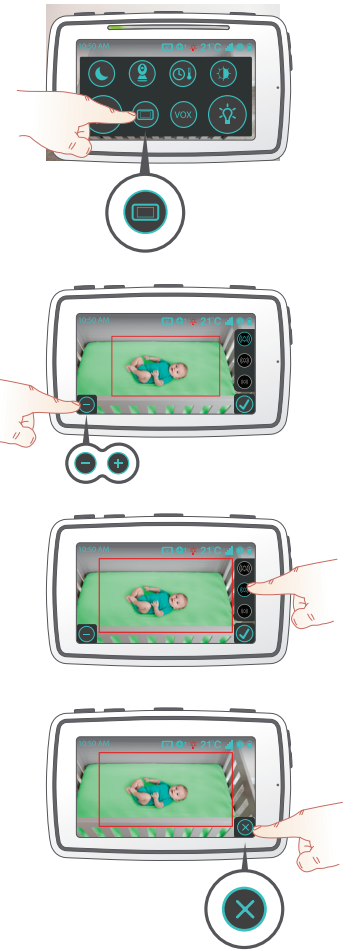


SleepZone™ Virtual Boundary

The SleepZone™ feature creates a virtual boundary area within your screen view and is designed to help alert you with a sound on your handheld if any object crosses through this boundary box. To use SleepZone, first press the MENU button. Press the SLEEPZONE icon. Press the MINUS/PLUS icon on the lower left-hand side of your screen to adjust between the two box size options - small or large. You can use camera steering and the zoom button to position the box around your baby. Choose alert volume level by pressing one of the alert icons on the right side of the screen. Press CHECK to complete SleepZone set up.

X icon and boundary box will stay visible while in the SleepZone mode. To exit out of SleepZone mode, press and hold the X icon for 2 seconds.

Recommended to plug in your handheld when using the SleepZone feature to extend battery life.



Nightlight

Press the MENU button. Touch the NIGHTLIGHT icon in the touchscreen. Touch the BLUE NIGHTLIGHT ICON and the camera will emit a soft blue glow. Touch the RED NIGHTLIGHT ICON and the camera will emit a warm red glow. Nightlights are comforting to little ones, especially toddlers who become scared in a pitch black room. Touch the GRAY NIGHTLIGHT ICON to turn off.

