

SPECIFICATIONS

System	
Processor	ARM 800 MHz
RAM	512MB
Storage	4GB Flash
Operating System	Microsoft® Windows® CE 6.0; Windows® Mobile 6
Display	4.3" TFT-LCD with resistive touch; outdoor-viewable display
Display Resolution	272 x 480 (WQVGA)
Network Interface	Built-in IEEE 802.11a/b/g/n WLAN and Bluetooth 2.1 with EDR
Control Switch and Button	1 power button, 4 front buttons
Indicator	1 power-on LED indicator, 1 WLAN enable/ communication indicator
Speaker/ Microphone	Built-in speakers; 1 mono microphone
Input/Output Ports	1 headset jack, 1 USB 1.1 host, 1 cradle interface (USB2.0 and charging), 1 DC-in jack
Power	
AC/DC Adapter	Input: 100 – 240V AC; Output: 5V DC, 3A
Battery Type	Li-ion battery 3760 mAh, 3.7V
Mechanical	
Enclosure	PC+ABS, TPR
Stylus	Non-electronic tip
Dimensions (H x W x D)	6.3 x 3.4 x 1.2 in/ 160 x 86 x 30 mm
Weight	0.9 lbs/ 415 g
Environmental	
Regulatory	FCC Class B, CE, C-Tick, RoHS compliant
Operating Temperature	Operation: 0°C - 40°C; Storage: -20°C - 60°C
Humidity	0% - 90% non-condensing

* Specifications subject to change without notice


DT Research, Inc.

2000 Concourse Drive, San Jose, CA 95131 <http://www.dtresearch.com>

Copyright © 2012, DT Research, Inc. All Rights Reserved.

DT Research is a registered trademarks of DT Research, Inc.


Handheld POS Terminal

DT430

BASIC OPERATION GUIDE

ENGLISH



INTRODUCTION

Thank you for acquiring the DT430, part of the POS Handheld line. The DT430 offers a 4.3" outdoor-viewable display, in a compact, rugged, and lightweight package. The DT430 enables efficient point-of-service applications, inventory management, and field services. The DT430 Point-of-Service Handheld provides the precise features needed to streamline operations and improve productivity, data accuracy, and service.

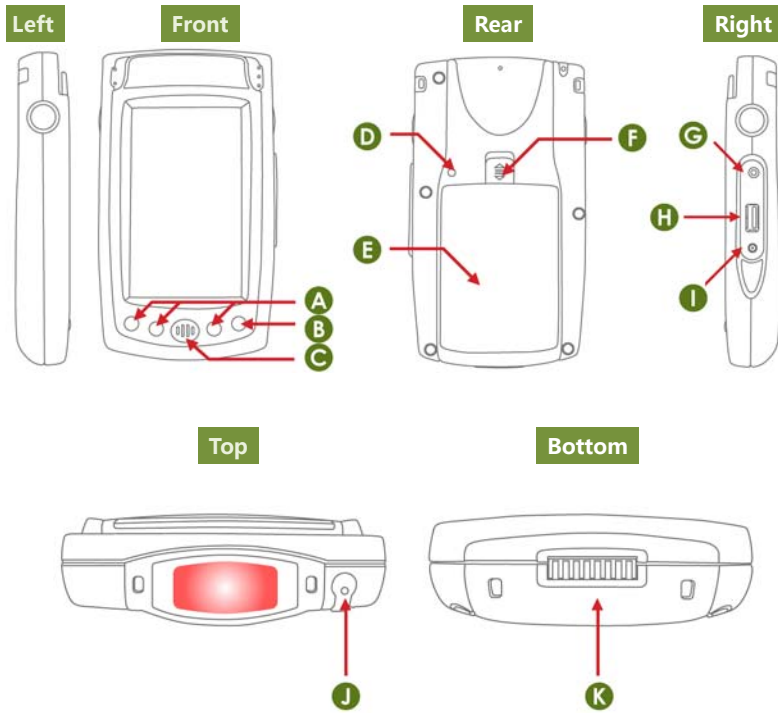
PACKAGE CONTENTS

1. One DT430
2. One battery pack
3. Basic operation guide
4. Stylus lanyard and hand strap

PRECAUTIONS

- Always exercise care when operating and handling the DT430.
- Do not disassemble any portion of the DT430. It will void any product warranty on DT430.
- Do not use any power adapter or charging cradle other than the one provided with the device or acquired from the manufacturer or its partners.
- In the unlikely event that abnormal noise, strange odor, or smoke is present, immediately power down the DT430 and disconnect all power sources. Please report the problem to your device provider immediately.
- Product label is on the battery compartment; it will be seen while loading the battery.

DT430 I/O Ports

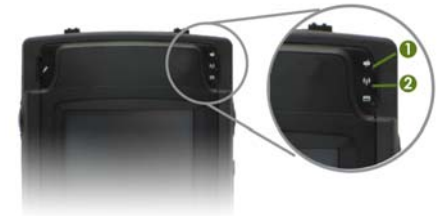


- A** Programmable buttons
- B** Suspend/ Resume
- C** Speaker
- D** Power button
- E** Battery
- F** Battery pack switch
- G** Audio jack
- H** USB 1.1 host
- I** DC-in
- J** Stylus
- K** Cradle connector

: Enable/ disable soft keyboard (Programmable)	: Suspend/ Resume
: Programmable	Hold + press : Touch screen calibration
: System Utility	

DT430 LED Status Indicators

- 1. Power Mode Status Indicator:**
 - Blue: Device is powered on
 - Blinking Blue: Main battery charging
 - Orange: Low battery mode
 - Blinking Orange: Extremely low battery mode
 - Off: Device is powered off or in suspend mode
- 2. Wi-Fi Status Indicator:**
 - Blue: The device has been connected to a wireless AP
 - Blinking blue: The device is connecting to a wireless AP
 - Off: Wi-Fi is disabled



FCC Regulations:

● This device complies with part 15 of the FCC Rules. Operation is subject to the following two conditions: (1) This device may not cause harmful interference, and (2) this device must accept any interference received, including interference that may cause undesired operation.

● This device has been tested and found to comply with the limits for a Class B digital device, pursuant to Part 15 of the FCC Rules. These limits are designed to provide reasonable protection against harmful interference in a residential installation. This equipment generates, uses and can radiate radio frequency energy and, if not installed and used in accordance with the instructions, may cause harmful interference to radio communications. However, there is no guarantee that interference will not occur in a particular installation. If this equipment does cause harmful interference to radio or television reception, which can be determined by turning the equipment off and on, the user is encouraged to try to correct the interference by one or more of the following measures:

- Reorient or relocate the receiving antenna.
- Increase the separation between the equipment and receiver.
- Connect the equipment into an outlet on a circuit different from that to which the receiver is connected.
- Consult the dealer or an experienced radio/TV technician for help.

Changes or modifications not expressly approved by the party responsible for compliance could void the user's authority to operate the equipment.

● Operation on the 5.15-5.25GHz frequency band is restricted to indoor use only. The FCC requires indoor use for the 5.15-5.25GHz band to reduce the potential for harmful interference to co-channel Mobile Satellite Systems. Therefore, it will only transmit on the 5.25-5.35 GHz, 5.47-5.725 GHz and 5.725 –5.850 GHz band when associated with an access point (AP).

● The antenna(s) used for this transmitter must not be co-located or operating in conjunction with any other antenna or transmitter.

▶ RF Exposure Information (SAR)

This device meets the government's requirements for exposure to radio waves.

This device is designed and manufactured not to exceed the emission limits for exposure to radio frequency (RF) energy set by the Federal Communications Commission of the U.S. Government.

The exposure standard for wireless devices employs a unit of measurement known as the Specific Absorption Rate, or SAR. The SAR limit set by the FCC is 1.6W/kg. *Tests for SAR are conducted using standard operating positions accepted by the FCC with the device transmitting at its highest certified power level in all tested frequency bands. Although the SAR is determined at the highest certified power level, the actual SAR level of the device while operating can be well below the maximum value. This is because the device is designed to operate at multiple power levels so as to use only the power required to reach the network. In general, the closer you are to a wireless base station antenna, the lower the power output.

The highest SAR value for the device as reported to the FCC when tested for worn on the body, as described in this user guide, is 1.07 W/kg.

While there may be differences between the SAR levels of various devices and at various positions, they all meet the government requirement.

The FCC has granted an Equipment Authorization for this device with all reported SAR levels evaluated as in compliance with the FCC RF exposure guidelines. SAR information on this device is on file with the FCC and can be found under the Display Grant section of www.fcc.gov/oet/ea/fccid after searching on FCC ID: TWG-SDCMSD40NBT.

This device has been tested and meets the FCC RF exposure guidelines.