

SKR600

Electronic RFID & Keypad Door Lock

Operation Manual

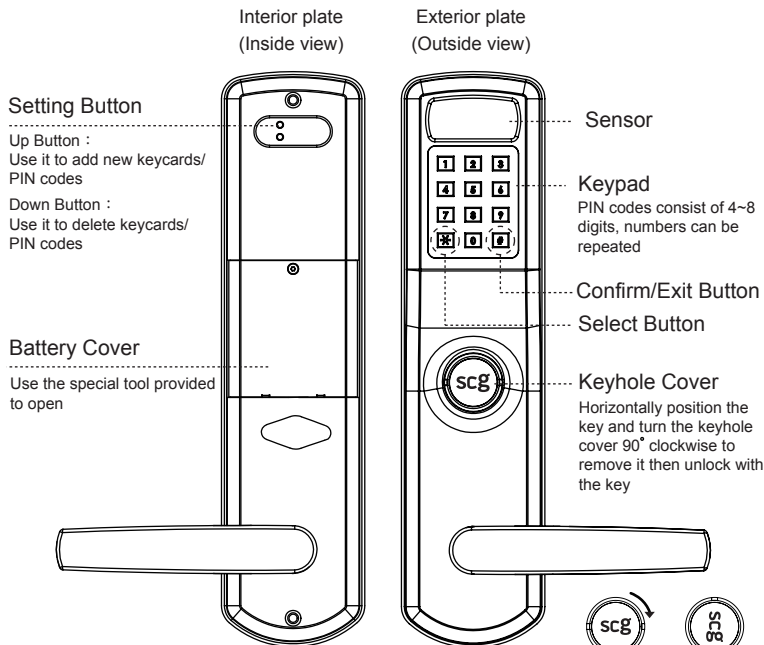


SKR600 Specification

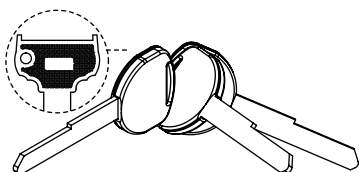
- ▲ Dimension -- Panels : 290(H) x 70(W) x 72 (D)-(mm)
- ▲ Approximate Weight : 4520 g
- ▲ Door Thickness : 45mm ~ 55mm
56mm ~ 80mm
- ▲ Standard US Mortise Lockbody
- ▲ Use 4AA Alkaline batteries (1.5V)
- ▲ Others : RFID Sensor
Digital Pad (Metal & Waterproof)
- ▲ Temperature : -10 °C ~ 70 °C

Product Overview

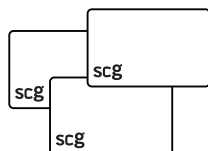
* The picture is for reference only. Please check the actual model for specific functions.



--Accessories--



Emergency Override Key
3 keys provided per lock



RFID Keycards

Unlocking Methods

- Mechanical Key** : Horizontally position the key and turn the keyhole cover 90 degrees clockwise to remove it then unlock with the key.
- Keycard** : Press any button to enter the system, simply place the RFID card to the sensor.
- PIN Code** : Press any button to enter the system, enter assigned PIN code and press # to confirm.
- Passage Mode** : Place the RFID card to the sensor or enter assigned PIN code and press * # * . Press # to lock.

Door Lock Status

Status	Light	Sounds
Operation Successful	Blue	1 beep
Operation Failed	Red	3 beeps
Enter/ Exit Setup Mode	Blue / Red	2 beeps
Low Battery	Red	5 continuous beeps
Door Opened Indication	1 beep after the right Keycard or PIN code that the lock is open.	
Door Closed Indication	After depressing the lever, the door is locked 1.5 seconds after the lever comes back to the horizontal position.	

Types of No.

Type	Quantity	Function	No.	Instruction
Administrator	4 sets	Add/Modify/Delete	*00-03	Unlocking Keycards or PIN codes.
User	94 sets	Unlock the door	*04-97	
Single-Entry User	1 set	Can be used only once	*98	Keycards or PIN codes be used only once.
Volume	1 set	Sound volume	*99	

Notice

- The factory default admin. PIN code is 123456. It is highly recommended to change the admin. code upon installation of the lock.
- Only one PIN code or one Keycard can be set per No. of location.
- Please turn to the last page to restore to the factory default settings.
- There is no need to reset PIN codes or Keycards after battery replacement.
- The setup mode cannot be entered during the passage mode.

PIN Code/ RFID Keycard Setup

⊙ Administrator Setup

- Enter the Setup Mode
- Administrator Recognition
- Press the No. *00~*99
- Enter the Intended PIN Code or Card
- Exit Setup Mode

- First time setup

Press the Up Button on the back of the lock for 2 seconds until hear two beeps.

Input the factory default admin. PIN code (123456) and then press # to confirm.

Press the No.

*00/ *01
*02/ *03

Enter the intended admin. PIN code (consists of 4-8 digits), and then press # to confirm or position the admin. card to the sensor.

#

5

- Admin. already setup

Input admin. PIN code and then press # to confirm or position the admin. card to the sensor.

⊙ User Setup

Press the Up Button on the back of the lock for 2 seconds until hear two beeps.

Input admin. PIN code and then press # to confirm or position the admin. card to the sensor.

Press the No.

*04 ~ *97

Enter the intended PIN code (consists of 4-8 digits), and then press # to confirm or position the card to the sensor.

#

5

⊙ Single-Entry User Setup

Press the Up Button on the back of the lock for 2 seconds until hear two beeps.

Input admin. PIN code and then press # to confirm or position the admin. card to the sensor.

Press the No. *98

Enter the intended PIN code (consists of 4-8 digits), and then press # to confirm or position the card to the sensor.

#

5

Notice

- The admin. and user PIN code cannot be 000000/111111/123456.
- Blue light flashes if the setup location has been occupied.
- 3 beeps (red light) mean operation failure.
- If no actions are taken over 5 seconds during the setup mode, the system will exit automatically with two beeps (blue light).

Other Setup

⊙ User Deletion

- Enter the Setup Mode
- Administrator Recognition
- Enter
- Exit Setup Mode

Press the Down Button on the back of the lock for 2 seconds until hear two beeps.

Input admin. PIN code and then press # to confirm or position the admin. card to the sensor.

Enter the No. you intend to delete (*01 ~ *97), and then press # to confirm or position the card.

#

4

⊙ Factory Default Setting

- Remove one battery.
- Next, while continuously pressing the two buttons on the back, reinstall the battery.
A continuous beeps (red light) and a short beep (blue light) after successful operation.

⊙ Troubleshooting

Problem	Indication
Continuous beeps after successful operation	Low battery alert. Please replace batteries immediately.
No reaction when entering Keycards/ PIN codes	Batteries are dead. Please use the key to unlock.
	Consecutive Keycards/PIN codes entry errors. Please try again after 1 minute.
Light doesn't go off	Replace batteries.

⊙ Volume Setup

- Enter the Setup Mode
- Administrator Recognition
- Press the No.
- Enter
- Exit Setup Mode

Press the Up Button on the back of the lock for 2 seconds until hear two beeps.

Input admin. PIN code and then press # to confirm or position the admin. card to the sensor.

Press the No. *99

Press 00(mute), 01(low), 02(medium) or 03(loud), and then press # to confirm.

#

5

⊙ All User Deletion

Press the Down Button on the back of the lock for 2 seconds until hear two beeps.

Input admin. PIN code and then press # to confirm or position the admin. card to the sensor.

Press the Down Button on the back of the lock for 5 seconds until hear a continuous beep and two short beeps mean successful reset.

#

4

⊙ Important Notes

- If the Keycard is lost, please delete it right away.
* Notice : The administrator (*00) can't be deleted individually.
- Please use alkaline batteries only. Do not mix using old and new batteries.
- The battery leakage will cause damage of the product. Please make regular inspections of battery leakage.
- Use a clean and dry cloth to preserve the cleanliness of the product. Do not use alcohol or other chemical agents.
- If you encounter any problems, please refer to the user manual first. If you still have questions, please feel free to contact us or email us.

Federal Communication Commission Interference Statement

This equipment has been tested and found to comply with the limits for a Class B digital device, pursuant to Part 15 of the FCC Rules. These limits are designed to provide reasonable protection against harmful interference in a residential installation.

This equipment generates, uses and can radiate radio frequency energy and, if not installed and used in accordance with the instructions, may cause harmful interference to radio communications. However, there is no guarantee that interference will not occur in a particular installation. If this equipment does cause harmful interference to radio or television reception, which can be determined by turning the equipment off and on, the user is encouraged to try to correct the interference by one of the following measures:

- . Reorient or relocate the receiving antenna.
- . Increase the separation between the equipment and receiver.
- . Connect the equipment into an outlet on a circuit different from that to which the receiver is connected.
- . Consult the dealer or an experienced radio/TV technician for help.

FCC Caution: To assure continued compliance, any changes or modifications not expressly approved by the party responsible for compliance could void the user's authority to operate this equipment. (Example - use only shielded interface cables when connecting to computer or peripheral devices).

This device complies with Part 15 of the FCC Rules. Operation is subject to the following two conditions:

- (1) This device may not cause harmful interference, and
- (2) This device must accept any interference received, including interference that may cause undesired operation.