

WARMING PRODUCTS

User Manual



Sunbeam[®]

IMPORTANT INSTRUCTIONS- DO NOT DESTROY

Warnings and Safeguards

As with all electrical products, misuse of product or failure to properly follow the instructions may cause overheating, fire, or personal injury. Please read the product label and all of the instructions before using your warming product.

- 1 Do not use this warming product with an infant, a child, an incapacitated person, a paraplegic, a quadriplegic, a diabetic, one insensitive to heat such as a person with poor blood circulation, or anyone who cannot clearly understand the instructions and/or operate the controls.
- 2 Do not use with damaged cords. Damaged cords can lead to fire. Do not trap, fold, cross, or pinch cords between bed slats, mattress, or springs, or against walls, footboards, or bed frame.
- 3 Do not dry clean this warming product. Cleaning liquid may damage the insulation of the heating element. Improper laundering may cause problems with the heating wire which can lead to fire.
- 4 Do not pinch, flex, or expose the heating wire to rubbing. A damaged heating wire may result in possible overheating or fire.
- 5 Turn off the control for the warming product when not using.
- 6 Keep control away from an open window.
- 7 Do not use pins; they may damage the electric wiring.
- 8 Be sure this blanket/mattress pad/throw is used only on an AC supply current circuit of 110-120 volts. Do not use with an extension cord.
- 9 Excessive heating may result from folding blanket, when in actual use.
- 10 Keep all dogs, cats, and other pets away from this warming product. This is an electrical appliance that they can damage or be injured by.
- 11 Do not use blanket/mattress pad on a waterbed, sofa, bunk bed, or mechanically adjustable bed and do not use throw on a waterbed, bunkbed, or mechanically adjustable bed.
- 12 Do not use another electronic heating device in conjunction with your warming product.
- 13 Use the proper size blanket/mattress pad for your bed. For example, use a Twin Size warming blanket on a Twin Size bed.
- 14 If the following Important Instructions are not followed the warming product will not operate properly.
- 15 If you see the warming product operating improperly, unplug it immediately and call Sunbeam Consumer Service at the 800 number listed under "How to Obtain Warranty Service".

Welcome

Thank you for choosing a Sunbeam® warming product. With your purchase you've made a real investment in your comfort and can look forward to staying warm and cozy for many cool days to come.

With over 50 years of experience and over 25 million households using a Sunbeam® warming product, you can rest comfortably knowing that Sunbeam® is the brand to trust...for quality and performance.

So get ready for a more restful sleep.

Table of contents

DD Remote Control	2-3
Warming Blanket	2
Mattress Pad	3
DD Convertible Control	4-5
Warming Blanket	4
Mattress Pad	5
DD Z Control	6-7
Warming Blanket	6
Mattress Pad	7
DD Z Control	8-9
Warming Blanket	8
Mattress Pad	9
DD Gradient Control	10-11
Warming Blanket	10
Mattress Pad	11
DDY	12-13
Warming Blanket	12
Mattress Pad	13
LED Throw	14
Auto-off feature	15
Care and cleaning	16
Frequently asked questions	17-18
Warranty	19
How to obtain warranty service	20



Features:

- REMOTE CONTROL – sends heat level control commands to the base unit and adjusts the blankets warmth accordingly.
- ELECTRONIC DIGITAL CONTROL – for easy setting with backlit LCD
- AUTO-OFF – 10 hour independent auto-off (see page 15)
- 10 TEMPERATURE SETTINGS – select your personal comfort
- PRE-HEAT – for cozy warmth before bedtime
- SOLID STATE – for accurate and consistent heat control
- EASY OPERATION – Electronic digital controller for easy operation
- EASY GRIP – ergonomic control for easy operation

- CORDLESS – no more wires to tangle
- AUDIBLE BEEP – when changing heat settings, on/off setting and automatic programming selections.

Pre-heat

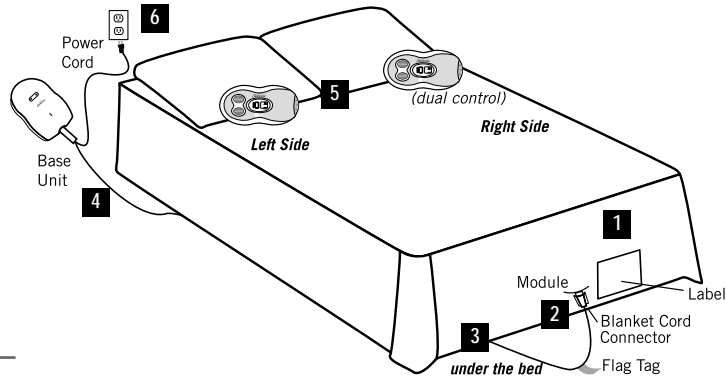
- 1 To use the preheat feature, simply press the round “On/Off” button and then press the “Preheat” button. The preheat function will heat the bed for a period of 30 minutes.
- 2 To reset the preheat feature, simply press the “On/Off” button OFF.
- 3 To turn back ON repeat step1.

DD Remote

CAUTION: Do not plug main power cord into the wall outlet until you have completely set up your warming blanket per the instructions.

IF YOU DO NOT FOLLOW THIS SEQUENCE, THE WARMING BLANKET WILL NOT WORK.

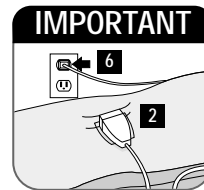
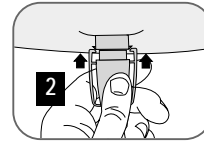
- Disconnect power cord from wall before detaching control from warming blanket
- Always make sure cords are NOT trapped or pinched between bed slats, mattress, springs, against wall, foot board or bed frame.

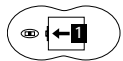


Set Up WARMING BLANKET

- 1 Place the warming blanket on the bed with the label side facing outward.
- 2 Plug cord into the module at the bottom of the warming blanket until the plastic hinges click into place. **CAUTION:** Cord must be COMPLETELY CONNECTED. A risk of fire could result from a loose connection.
- 3 Run the cord under the bed, not between the mattress and box springs. Avoid any tangling or pinching.
- 4 Place the base unit on the floor under the bed.
- 5 Place the remote control where it is convenient for you.
- 6 Plug warming blanket power cord into a 110-120 volt wall outlet.

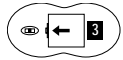
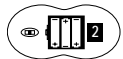
CAUTION: This appliance has a polarized plug (one blade is wider than the other). To reduce the risk of electrical shock, this plug is intended to fit only one way into an outlet. If the plug does not fit in the outlet, reverse the plug. Do not attempt to force the plug.





Installing the Batteries

- 1 Remove the battery compartment door from the back of the remote control
- 2 Insert three AAA batteries, matching the + and - markings in the battery compartment to the markings on the batteries
- 3 Replace the battery compartment door
- 4 If your blanket has two remote controls, repeat steps 1 – 3 to install batteries in the second remote control.



WARNING: Changes or modifications to this unit not expressly approved by the party responsible for compliance could void the user's authority to operate equipment.

Using your Control:

- 1 To turn the control on, simply press the "On/Off" button. The backlit display light will illuminate and begin to warm at the comfort setting last used.

CAUTION: ALWAYS turn the warming blanket "Off" when not in use.
2 To turn the warming blanket OFF simply press the "On/Off" a second time.

Setting the control side (Queen or King blankets only)

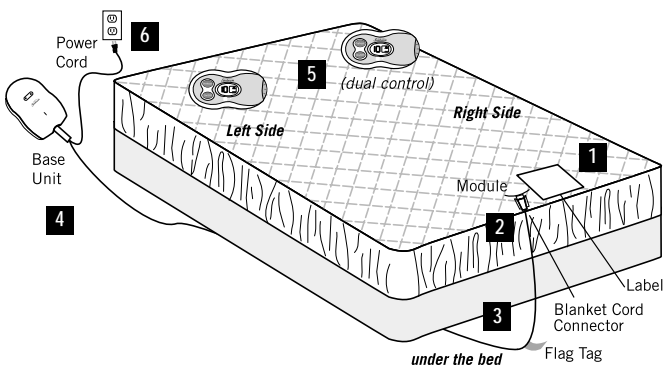
The "left" control can operate the left or both sides, and the "right" control can operate the right or both sides. (If you have a Twin or Full size blanket, the remote control operates the entire blanket.) Each person has complete control over his/her temperature comfort level for the ultimate in individualized comfort.

You can use one remote control to operate both sides of the blanket (both sides of the blanket will have the same heat level). Or, you can use two remote controls to set separate heat levels for each side of the blanket.

CAUTION: Do not plug main power cord into the wall outlet until you have completely set up your warming blanket per the instructions.

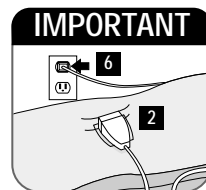
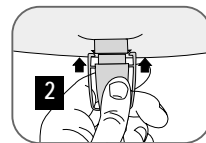
IF YOU DO NOT FOLLOW THIS SEQUENCE, THE WARMING MATTRESS PAD WILL NOT WORK.

- Disconnect power cord from wall before detaching control from warming mattress pad
- Always make sure cords are NOT trapped or pinched between bed slats, mattress, springs, against wall, foot board or bed frame.



Set Up WARMING MATTRESS PAD

- 1 Place the warming mattress pad on the bed with the label side facing outward.
- 2 Plug cord into the module at the bottom of the warming mattress pad until the plastic hinges click into place.
CAUTION: Cord must be COMPLETELY CONNECTED. A risk of fire could result from a loose connection.
- 3 Run the cord under the bed, not between the mattress and box springs. Avoid any tangling or pinching.
- 4 Place the base unit on the floor under the bed.
- 5 Place the remote control where it is convenient for you.
- 6 Plug warming mattress pad power cord into a 110-120 volt wall outlet.



CAUTION: This appliance has a polarized plug (one blade is wider than the other). To reduce the risk of electrical shock, this plug is intended to fit only one way into an outlet. If the plug does not fit in the outlet, reverse the plug. Do not attempt to force the plug.

Using your Control:

1 To turn the control on, simply press the "On/Off" button. The backlit display light will reset itself by flashing "FF" and then will light showing the previous setting the unit was set during the last use and will begin to warm.

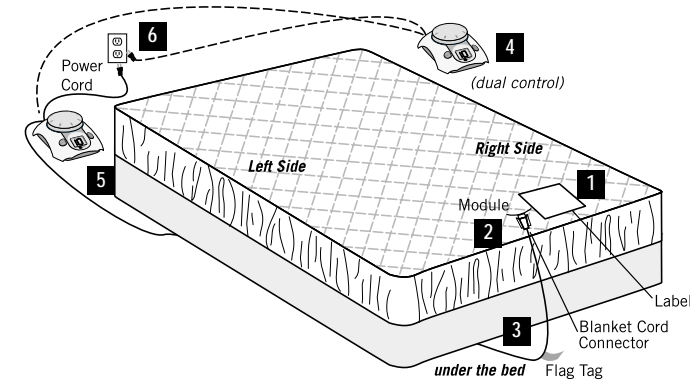
CAUTION: ALWAYS turn the warming blanket/warming mattress pad "OFF" when not in use.

2 To turn the warming blanket/warming mattress pad OFF simply press the "On/Off" button.

CAUTION: Do not plug main power cord into the wall outlet until you have completely set up your warming blanket per the instructions.

IF YOU DO NOT FOLLOW THIS SEQUENCE, THE WARMING MATTRESS PADS WILL NOT WORK.

- Disconnect power cord from wall before detaching control from warming mattress pad
- Always make sure cords are NOT trapped or pinched between bed slats, mattress, springs, against wall, foot board or bed frame.



Set Up WARMING MATTRESS PAD

1 Place the warming mattress pad on the bed with the label side facing outward.

2 Plug cord into the module at the bottom of the warming mattress pad until the plastic hinges click into place.

CAUTION: Cord must be COMPLETELY CONNECTED. A risk of fire could result from a loose connection.

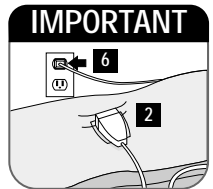
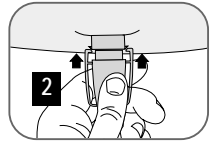
3 Run the cord under the bed, not between the mattress and box springs. Avoid any tangling or pinching.

4 For dual control warming mattress pads, place primary control (label on back of control) on the same side of the bed as the blanket label side.

5 For single control warming mattress pads, the control can be placed on either side of the bed.

6 Plug warming mattress pad power cord into a 110-120 volt wall outlet.

CAUTION: This appliance has a polarized plug (one blade is wider than the other). To reduce the risk of electrical shock, this plug is intended to fit only one way into an outlet. If the plug does not fit in the outlet, reverse the plug. Do not attempt to force the plug.

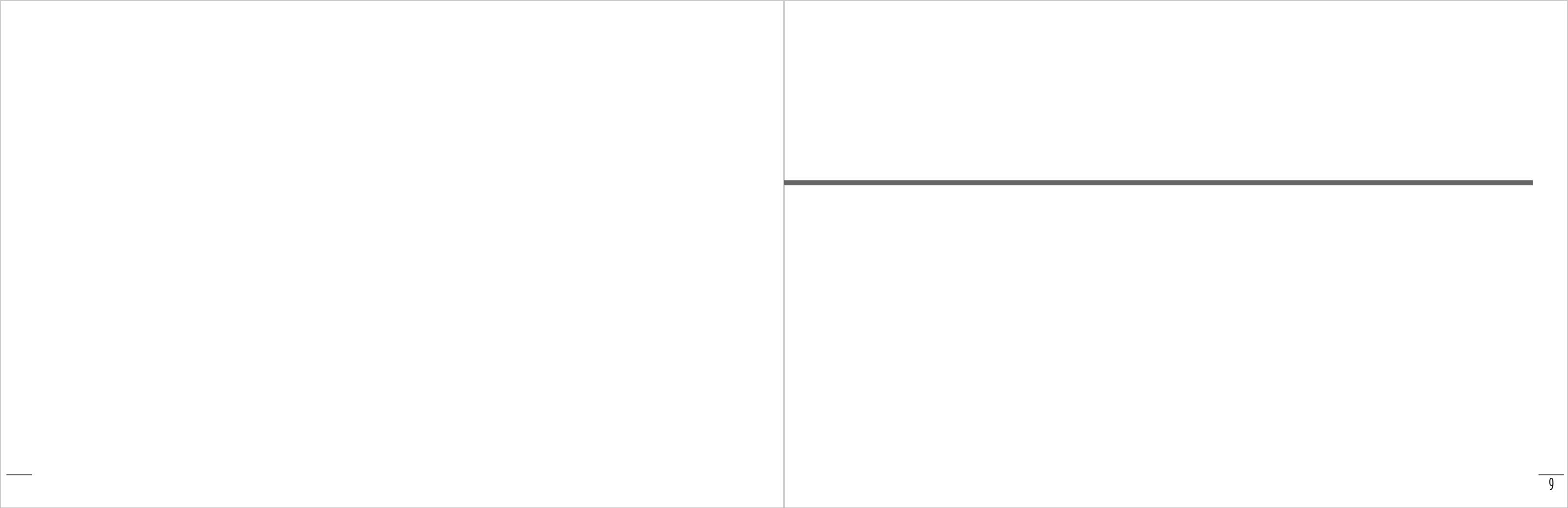




DD 2

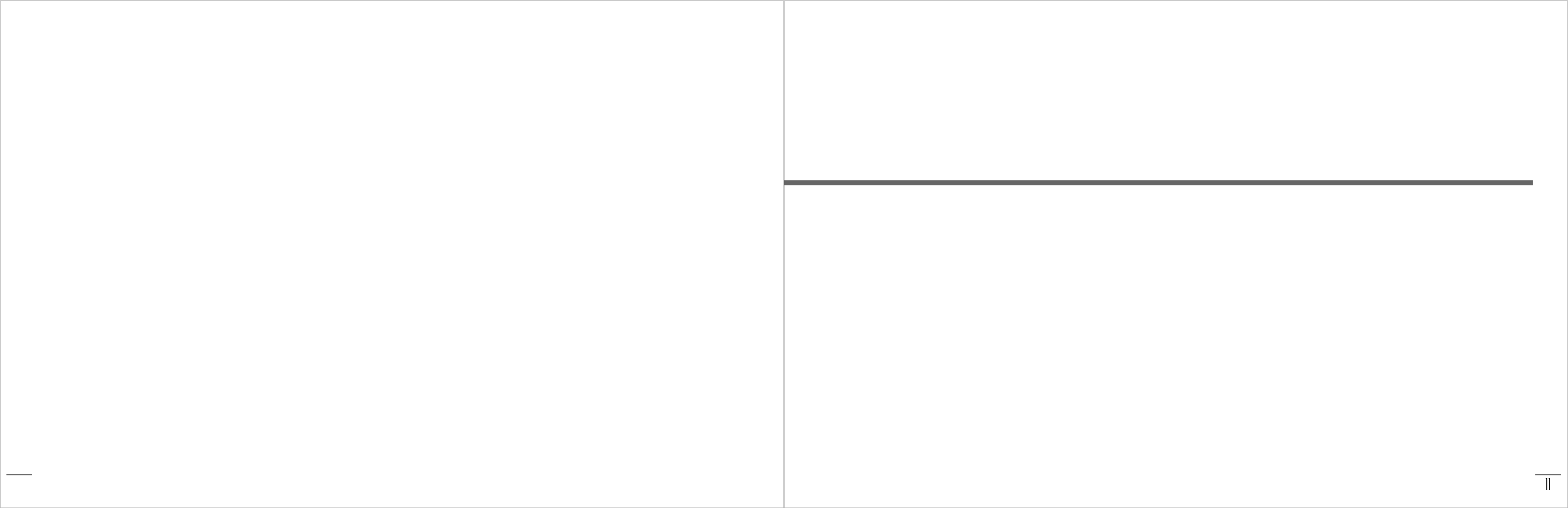


DD Z



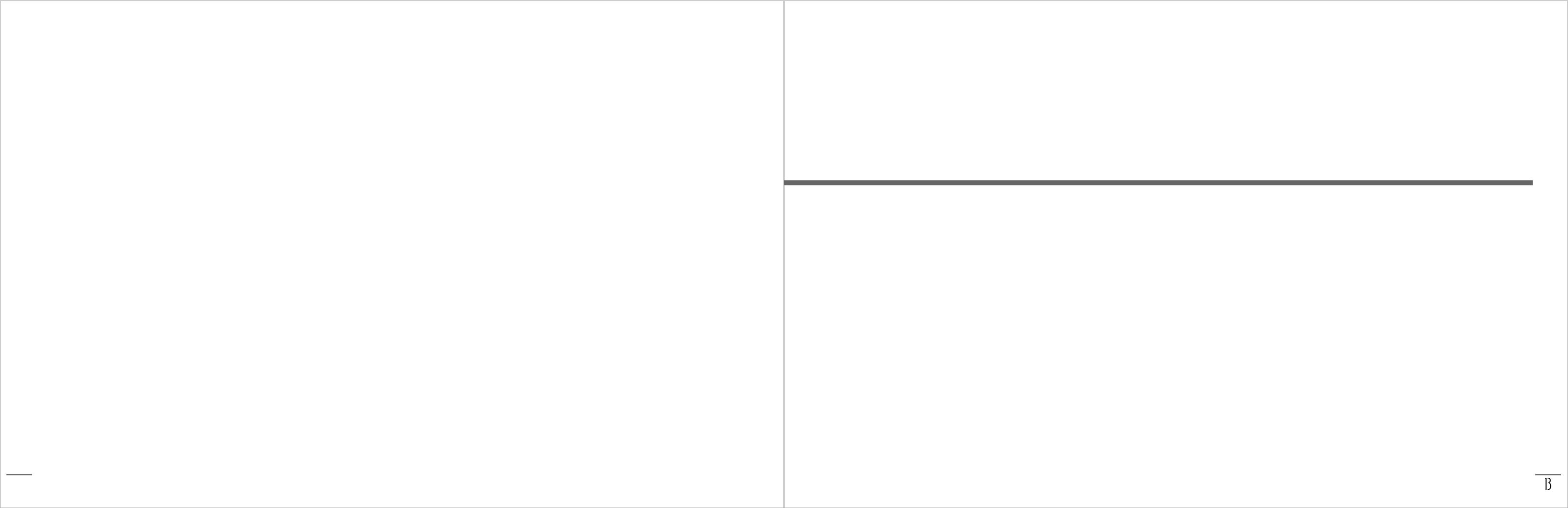


DD Gradient





DD Y





Features:

- 3 TEMPERATURE SETTINGS – select your personal comfort level
- SILENT OPERATION – no clicking
- SOLID STATE – for accurate and consistent heat control
- EASY OPERATION – electronic controller for easy operation
- EASY GRIP – ergonomic control for easy operation
- AUTO-OFF – 3 hour independent auto-off

Using your Warming Throw Control:

- 1 To turn the throw on simply press the round gray button. The indicator light will glow, depending on which setting the warming throw is set, and the warming throw will begin to warm.
CAUTION: ALWAYS turn the warming throw "OFF" and disconnect the power cord from the outlet when not in use.
- 2 To turn the warming throw OFF simply press the round gray button through the different settings until the temperature setting lights are not glowing.

LED Throw

CAUTION: Do not plug main power cord into the wall outlet until you have completely set up your warming blanket per the instructions.

IF YOU DO NOT FOLLOW THIS SEQUENCE, THE WARMING THROW WILL NOT WORK.

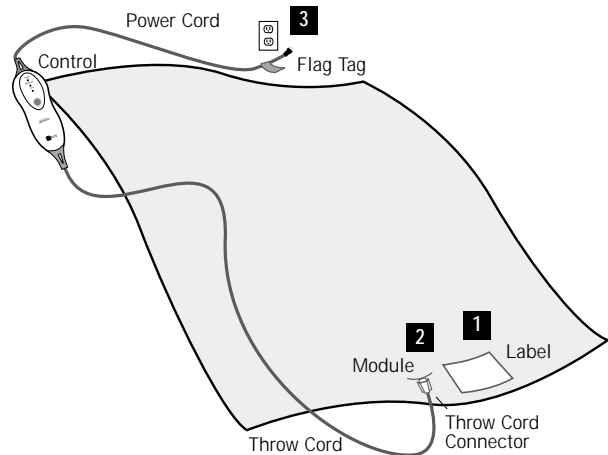
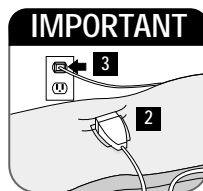
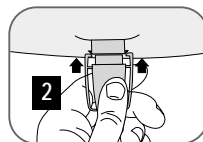
- Disconnect power cord from wall before detaching control from warming blanket
- Always make sure cords are NOT trapped or pinched between furniture, walls or chairs.

Set Up WARMING THROW

When setting up your warming throw, be sure to follow the steps below in order.

- 1 Locate the warming throw's information label, located near the module.
- 2 Firmly plug the warming throw cord into the module until the plastic hinges on each side click into place.
CAUTION: Cord must be COMPLETELY CONNECTED. A risk of fire could result from a loose connection.
- 3 Plug warming throw power cord into a 110-120 volt wall outlet.

CAUTION: This appliance has a polarized plug (one blade is wider than the other). To reduce the risk of electrical shock, this plug is intended to fit only one way into an outlet. If the plug does not fit in the outlet, reverse the plug. Do not attempt to force the plug.



Auto-off feature



Auto-Off Ten Hours

*(Three Hours for
Warming Throw)*

Auto-off Feature:

The "Auto-Off" feature is designed for safety and conservation of energy by automatically turning your warming product off after 10 hours of continuous use.

The Auto-off function engages 10 hours from the time the control is turned "On".

For Dual Control:

Whichever control is turned On first that controls 10 hour Auto-off feature will be initiated. The controls Auto-off features work independently from each other.

To restart after a power failure:

Press the "On/Off" or "On" button, the blanket/mattress pad will begin to warm.

Note: After a power outage, the "Auto-Off" feature automatically resets the timer.

Auto-off Feature for Throw:

The "Auto-Off" feature is designed for safety and conservation of energy by automatically turning your warming product off after 3 hours of continuous use.

The Auto-off function engages 3 hours from the time the control is turned "On".

Care and cleaning

OF YOUR WARMING PRODUCT

Taking care of your warming product is easy and safe as long as you follow a few simple steps.

Caution: Always disconnect the power cord and the blanket/mattress pad/throw connection cord at the connection end before washing. Carefully follow all washing instructions or your warming product may shrink and possibly cause a fire hazard.

DO NOT

- **DO NOT** dry clean your blanket/mattress pad/throw. Dry cleaning solvents may damage the warming element.
- **DO NOT** use bleach or cleaning fluids.
- **DO NOT** use a wringer.
- **DO NOT** iron the blanket/mattress pad/throw.
- **DO NOT** use mothballs or sprays of any kind.
- **DO NOT** turn the blanket/mattress pad/throw on until it is completely dry.

Machine Washing

- 1 Presoak the blanket/mattress pad/throw for 15 minutes in mild soap and lukewarm water.
- 2 Wash in mild soap and lukewarm water on the delicate or gentle cycle in the washer for two minutes. Remember, do not use bleach.
- 3 Rinse in fresh, lukewarm water.
- 4 Spin dry in the washing machine. Then gently stretch to its original size.

Machine Drying

Caution: Do not use commercial dryers or the dryers at your local laundromat. They get too hot and would damage the wiring of the warming product.

- 1 Preheat the dryer on the low temperature setting for 2 minutes.
- 2 Place blanket/mattress pad/throw into the dryer and tumble dry for 10 minutes at a low temperature.
- 3 Remove the blanket/mattress pad/throw while it is still damp and gently stretch it to its original size.
- 4 Continue to air dry over a clothesline or a shower rod. DO NOT use clothespins.
- 5 Warming product must be completely dry before using.

Hand Washing

- 1 Presoak the blanket/mattress pad/throw for 15 minutes in mild soap and lukewarm water.
- 2 Gently squeeze the soap suds through a few times.
- 3 Rinse in fresh, lukewarm water.

Hand Drying

- 1 Gently stretch the blanket/mattress pad/throw back to its original size.
- 2 Air dry over a clothesline or hang over a shower rod. DO NOT use clothespins.
- 3 Warming product must be completely dry before using.

Frequently asked questions

OF YOUR WARMING PRODUCT

Q Who should NOT use the warming blanket, warming mattress pad, or warming throw?

A The following people should NOT use the warming blanket, warming mattress pad, or warming throw:

- **An infant**
- **A child**
- **An incapacitated person**
- **A paraplegic**
- **A quadriplegic**
- **A diabetic**
- **Anyone insensitive to heat**
- **Anyone who cannot clearly understand the instructions and/or operate the controls**

Q What do the Underwriters Laboratories (UL) or (ETL) labels mean? What do either of these labels mean about safety of Sunbeam warming products?

A Underwriters Laboratories (UL) develops product safety standards for a large range of products and performs independent tests based on these standards. Products tested by UL and which have passed all the safety standards are permitted to bear the UL label. Intertek Testing Services (ETL) is a certified, independent testing organization that tests products in accordance with UL safety standards and issues the ETL label for those products that meet the relevant UL standards. All Sunbeam products are tested to UL standards and bear either the UL or ETL label to indicate that the product meets or exceeds UL/ETL safety standards for warming products.

Q I have heard that some warming products have Electromagnetic Fields (EMFs). What is this?

A EMF stands for Electromagnetic Field. This is an electrical field that surrounds any wire that has current flowing along its length. Although several studies have been conducted to evaluate the impact, EMFs have not been proven to be harmful. In any event, Sunbeam has reduced the strength of EMFs in its blankets/mattress pads/throws to very low levels.

Q What do I do if my pet chews the cord, I lose my controller, or the controller does not operate properly?

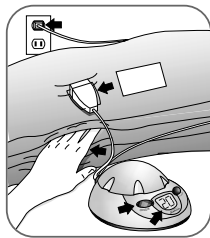
A Please stop using the warming product immediately. Call our Consumer Service number listed under How to Obtain Warranty Service and ask for instructions on how and where to send the warming product.

Q My control feels warm to the touch: Is this a problem?

A No. The control will feel warm to the touch when functioning properly.

Q My warming product doesn't operate.

A Follow instructions on the flag tag. Unplug the system from wall outlet. Check that the control is well connected to the module. Plug the power cord into the wall outlet to reset the control. Press "On/Off" or "On" and set at the highest setting and wait 20 minutes. Try this twice. If the system still does not operate, disconnect the power cord and contact consumer service at the 800 number listed under How to Obtain Warranty Service.



Q My warming blanket/warming mattress pad/warming throw doesn't heat properly.

A Check to make sure the cord is plugged into the module and the power cord is firmly connected to the wall outlet.

Check that the control is "On". If the system still fails to heat, try the following test to see if it is operating.

- 1 Fold the warming blanket, warming mattress pad, or warming throw 3 times over.
- 2 Connect the control to the module and plug the power cord into an outlet.
- 3 Turn the control to the highest setting and wait five to seven minutes.
- 4 Put your hand between the folds and you should feel the blanket/ mattress pad/throw warming. **Note:** Remember, the warming product is not a heating pad. It will not feel hot to the touch when laid out flat in a normal manner.

Caution: Do not continue the test for more than seven minutes. DO NOT attempt to make any internal adjustments to this appliance. If you have tried all of the solutions above and the warming product still doesn't work, stop using it immediately, disconnect the power cord and contact our consumer service at the 800 number listed under How to Obtain Warranty Service.

Q What does "FF" mean on my Electronic Digital Control?

A The digital controls are designed to notify you in the event that a problem has been discovered by flashing "FF" on the display. Follow instructions on the flag tag to reset control. First, check the blanket/mattress pad for visual damage. If no visual damage is found, unplug the system from wall outlet. Check that the control is well connected to the module. Plug the power cord into the wall outlet. Set the control to "On." If the



**Models DD3, DD2,
DDZ, DDW**

system still does not operate after 2 or 3 times trying to reset, disconnect the power cord and contact consumer service at 800-892-7684.

Q What does a flashing light mean on my throw LED control or DD Gradient control?

A The throw control and DD Gradient control is designed to notify you in the event that a problem has been discovered by flashing the light on the display. Follow instructions on the flag tag to reset control. First, check the blanket/mattress pad/throw for visual damage. If no visual damage is found, unplug the system from wall outlet. Check that the control is well connected to the module. Plug the power cord into the wall outlet. Set the control to "On." If the system still does not operate after 2 or 3 times trying to reset, disconnect the power cord and contact consumer service at 800-892-7684.

Q I have experienced some shedding of the fabric fibers of my warming blanket/warming throw, what do I do?

A Shedding is normal. If it becomes bothersome, follow the use and care instructions to wash and dry your warming blanket/warming throw.

Limited Warranty

Sunbeam Products Inc. ("Sunbeam") warrants that for a period stated below from the date of purchase, this product will be free from defects in material and workmanship.

- Warming Blankets branded Sunbeam® Imperial Court™, Elite™, Dynasty Nights™, SlumberRest Arctic Dawn™, Nordic Dreams™, Winter Oasis™, Basic™ and Northern Illusions™, and Sunbeam® The Blanket with a Brain® will carry a **FIVE** year limited warranty.
- Warming Blankets branded Sunbeam® Select™ will carry a **TWO** year limited warranty.
- Warming Blankets branded Arlington™ will carry a **ONE** year limited warranty.
- Warming Mattress Pads branded Sunbeam® Palace Comfort™, Winter Sunrise™ and Midnight Retreat™, SlumberRest® Midnight Sun™ and Glacial Retreat™, and Sunbeam® The Mattress Pad with a Brain® will carry a **FIVE** year limited warranty.
- Warming Mattress Pads branded Arlington™ will carry a **ONE** year limited warranty.
- Warming Throws branded Sunbeam® Select™, Cuddle-Up™, SlumberRest® Cuddler™, and Sunbeam® The Throw with a Brain® and Sunbeam® American Heritage Collection™ will carry a **TWO** year limited warranty.
- Warming Throws branded Arlington™, will carry a **ONE** year warranty.

Sunbeam, at its option, will repair or replace this product or any component of the product found to be defective during the warranty period. Replacement will be made with a new or remanufactured product or component. If the product is no longer available, replacement may be made with a similar product of equal or greater value. This is your exclusive warranty. This warranty is valid for the original retail purchaser from the date of initial retail purchase and is not transferable. Keep the original sales receipt. Proof of purchase is required to obtain warranty performance.

Sunbeam dealers, service centers, or retail stores selling Sunbeam products do not have the right to alter, modify, or any way change the terms and conditions of this warranty. This warranty does not cover normal wear of parts or damage resulting from any of the following: negligent use or misuse of the product, use on improper voltage or current, use contrary to the operating instructions, disassembly, repair or alteration by anyone other than Sunbeam or an authorized service center. Further, the warranty does not cover Acts of God, or Nature, such as fire, flood, hurricanes and tornadoes. Sunbeam shall not be liable for any incidental or consequential damages caused by the breach of any express or implied warranty. Except to the extent prohibited by applicable law, any implied warranty of merchantability or fitness for a particular purpose is limited in duration to the duration of the above warranty. Some states, provinces or jurisdictions do not allow the exclusion or limitation of incidental or consequential damages or limitations on how long an implied warranty lasts, so the above limitations or exclusion may not apply to you. This warranty gives you specific legal rights, and you may also have other rights that vary from state to state or province to province.

How to obtain warranty service:

We're Here to Help. For any questions you may have about your warming product, please contact Sunbeam Consumer Service: 1-800-892-7684, or write with product questions to:

SUNBEAM CONSUMER SERVICE

P.O. Box 948389

Maitland, FL 32794-8389

or visit our web site at: www.sunbeambedding.com.

To return your product for repair or replacement:

Please attach a tag to the product (do not use pins) that includes your name, address, daytime telephone number, and description of the problem. Please include a copy of the original sales receipt.

Carefully package the product. Please use UPS or Parcel Post, with shipping and insurance prepaid to: SUNBEAM PRODUCTS, INC.

Blanket Service Station

P.O. Box 469

224 Russell Drive

Waynesboro, MS 39367

DO NOT RETURN THIS PRODUCT TO THE PLACE OF PURCHASE.

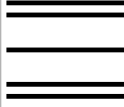
©2003 Sunbeam® is a registered trademark of Sunbeam Products, Inc.

Distributed by Sunbeam Products, Inc., 2381 Executive Center Drive, Boca Raton, FL 33431

Please do not send products or other correspondence to this address.

021 T

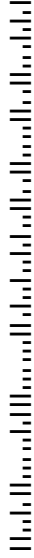
PLACE
FIRST-CLASS
STAMP
HERE



Sunbeam[®]

PRODUCT REGISTRATION DEPARTMENT
PO BOX 44236
DENVER CO 80201-4236

RPOB 9/02



Sunbeam[®]

PRODUCT REGISTRATION CARD

Complete the attached registration card and return today to receive these 3 important benefits:

- ▲ **CONFIRM YOUR WARRANTY:**
Your prompt product registration confirms your right to the protection available under the terms and conditions of your Sunbeam warranty.
- ▲ **PROTECT YOUR PRODUCT:**
We will keep the model number and date of purchase of your new Sunbeam product on file to help you refer to this information when necessary.
- ▲ **HELP US DEVELOP NEW PRODUCTS:**
We value your input! Your responses will help us bring you new products specifically designed to meet your needs.

REGISTER ONLINE AT: WWW.SUNBEAMBEDDING.COM

PLEASE FOLD AND SEAL WITH TAPE BEFORE MAILING. DO NOT STAPLE.

We appreciate your responses to this questionnaire and the information you provide will be used by us and our marketing partners to offer you product information and other communication that may interest you. This information in no way will have an effect on your warranty terms.

Please fill-out and return this card within 10 days!



021 T

1 First name: _____ Initial: _____ Last name: _____ Apt number: _____
Address: (number and street) _____ State: _____ Zip code: _____
City: _____

2 E-mail address: (EXAMPLE: yourname@yourhost.com) _____

1. Yes! I want to receive offers or communications from Sunbeam via e-mail.
2. Yes! I want to receive offers or communications that may interest me from other companies via e-mail. I understand this e-mail address may be shared with and/or combined with information from other sources.

3 Date of purchase: _____
Month _____ Day _____ Year _____

4 Product purchased: _____
1. Warning blanket 3. Warming throw
2. Warming mattress pad

5 Style number: _____

6 Purchase price: \$ _____ .00

7 Store where purchased: _____

8 Please describe this purchase: _____

9 How did you first learn about this product?
1. Inside the store 4. News story-public relations
2. Advertisement 3. Trusted brand

10 What do you consider the most important factors influencing your decision to purchase this warming product?
1. Color/style 7. Materiality
2. Replacement of existing 8. Auto-off feature
3. Value for price 9. Large number of heat settings
4. Friend/relative's recommendation 10. Energy savings
5. Advertising 11. Cold weather
6. Brand name I trust 12. Gift for someone else
13. Other _____

11 How often do you turn on/plan on turning on your warming product (using its heating capacity)? (Check all that apply)
A. Everyday _____ a week _____ a month _____
B. Once _____
C. Once _____

12 What is the approximate temperature your home thermostat is set to through out the night during winter?
1. Under 55 4. 66-70
2. 56-60 5. 71-75
3. 61-65 6. Over 75

13 How often do you purchase this type of product?
1. Received as a gift 4. Every 4-5 years
2. First time purchase 5. Every 6-9 years
3. Every 1-3 years 6. Every 10 + years

14 Which of the following products do you have or plan to own?
1. Warning blanket 3. Electric throw
2. Warming mattress pad

23 I use these credit cards:
1. American Express 4. Visa
2. MasterCard 5. Other _____
3. Do not have credit cards 6. Do not have credit cards

24 Someone in my home participates in the following activities:
(Check all that apply)
1. Crafts 10. Outdoor activities
2. Cultural arts/events 11. Own a pet
3. Do-it-yourself 12. Personal computing
4. Enter sweepstakes/contests 13. Read books
5. Financial/investments 14. Self improvement
6. Fitness/aerobic/exercising 15. Sports
7. Gardening 16. Travel
8. Gourmet cooking 17. TV shopping
9. Home decorating 18. Watch sports on TV

15 Your gender: 1. Male 2. Female
16 Your marital status: 1. Married 2. Single
17 Date of your birth: _____
Month _____ Day _____ Year _____

18 Including yourself, what is the total number of people living in your household?
(Examples: 01, 02, 03, 04,...) _____

19 Date of birth (month/year) of the other adults and children in your household:
Male Female
1. 2. _____
Month Year Month Year
1. 2. _____
Month Year Month Year

20 For your primary residence, do you:
1. Own 2. Rent

21 Education: (Please check which category applies to you):
1. Some high school 3. College degree
2. Completed high school 4. Graduate degree

22 In the last six (6) months has anyone in your household purchased any of the following items through the mail and/or over the internet?
A. Mail _____ B. Internet _____
1. Books/magazines _____
2. Children's products _____
3. Clothes _____
4. Insurance/financial products _____
5. Music/video/DVD _____
6. Travel _____
7. Other _____

This device complies with Part 15 of the FCC Rules. Operation is subject to the following two conditions: (1) this device may not cause harmful interference, and (2) this device must accept any interference received, including interference that may cause undesired operation.

Warning: Changes or modifications to this unit not expressly approved by the party responsible for compliance could void the user's authority to operate the equipment.

NOTE: This equipment has been tested and found to comply with the limits for a Class B digital device, pursuant to Part 15 of the FCC Rules. These limits are designed to provide reasonable protection against harmful interference in a residential installation. This equipment generates, uses and can radiate radio frequency energy and, if not installed and used in accordance with the instructions, may cause harmful interference to radio communications.

However, there is no guarantee that interference will not occur in a particular installation. If this equipment does cause harmful interference to radio or television reception, which can be determined by turning the equipment off and on, the user is encouraged to try to correct the interference by one or more of the following measures:

- Reorient or relocate the receiving antenna.**
- Increase the separation between the equipment and receiver.**
- Connect the equipment into an outlet on a circuit different from that to which the receiver is connected.**
- Consult the dealer or an experienced radio/TV technician for help.**