



Table of Contents

Introduction & Basic Care.....	2
The MP3 Player.....	3
The Cube Speaker System.....	6
Operating the Player/Cube.....	10
Operating the MP3 Player.....	14
Troubleshooting.....	18
Technical Specifications.....	21
FCC Information.....	23
Warranty Information.....	25

Questions? Visit www.youtopiallc.com or call (877) 244-2864.

Introduction & Basic Care

Before using the player, please read this manual carefully to obtain the best possible performance from your player. Keep this manual for future reference.

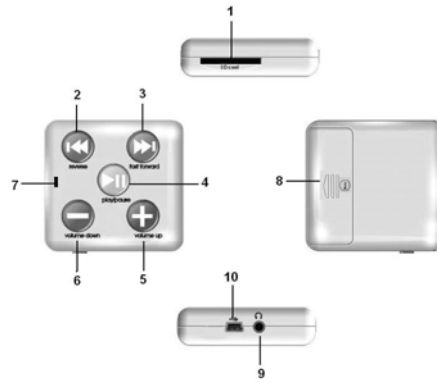
IN THE BOX

- Portable cube speaker system
- Removable MP3 player
- Preloaded digital music card
- Stereo ear buds
- USB cable
- AC adapter
- Quick start guide
- Universal MP3 player adapter

BASIC CARE AND OPERATION

- Do not immerse or operate in or near water. These units are neither waterproof nor water-resistant.
- Do not disconnect unit from computer while uploading or downloading files, or formatting the memory. Allow the operation to be completed before disconnecting or you may lose or corrupt your data/files.
- Store and operate units in temperatures between -14 degrees F and 113 degrees F.
- Avoid dropping or involving units in high impact.
- Clean your units with a soft cloth moistened only with mild soap and water. Stronger cleaning agents can damage the surface of the units.

The MP3 Player



1 – SD Card Slot	6 – Volume Down
2 – Back / Previous Song	7 – LED indicator
3 – Forward / Next Song	8 – Battery Compartment
4 – Play / Pause / Stop / Power On and Off	9 – Earphone Jack
5 – Volume Up	10 – Mini-USB port

FEATURES AND CONTROLS

1. SD CARD SLOT – Compartment for your SD card
2. BACK / PREVIOUS SONG – Plays previous song; or, scrolls back through current song
3. FORWARD / NEXT SONG – Plays next song; or, scrolls forward through current song
4. “PLAY / PAUSE / STOP / POWER ON and OFF” – Plays, pauses, stops and powers on and off the unit. This function button will be referred to as “PLAY” in this guide.
5. VOLUME UP – Increases volume
6. VOLUME DOWN – Decreases volume
7. LED INDICATOR – Light indicates operation mode
8. BATTERY COMPARTMENT – Use 1 x AAA alkaline battery
9. EARPHONE JACK – Connects to speaker system, or insert to earphone plug
10. MINI-USB PORT – Connects to speaker system, or use the USB cable to connect player or computer

BATTERY INSTALLATION / REPLACEMENT

The player requires one “AAA” battery to operate if you are using the player as a personal portable device with earphones. The player does not require a battery if it is connected to the speaker system, which will supply power to the player through USB connection.

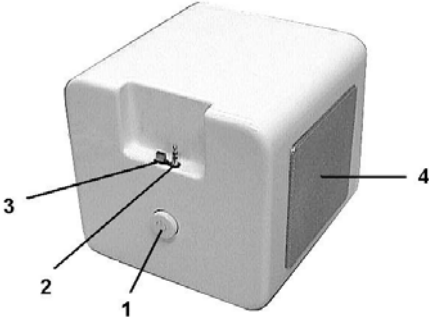
To install or replace the battery:

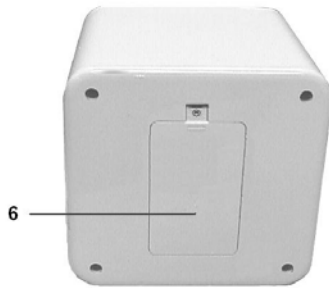
1. Remove the safety screw from the battery lid
2. Slide the battery cover following the direction of the arrow
3. Remove the old battery if replacing it
4. Install new "AAA" (1.5V) battery according to the correct polarity indicated, (+) and (-)
5. Put the battery cover back on until the latch snaps in place
6. Place the screw back on the battery lid.

Precautions:

- Use only the size and type of battery specified
- Battery polarity must be inserted correctly for safe and proper use. Reversed polarity may cause damage to the device
- If the device will not be used for a long period, remove the battery to prevent damage or injury from possible battery leakage
- If battery leakage occurs and comes in contact with skin, immediately flush affected area with running water (not hot) and contact nearest Poison Control Center

The Cube Speaker System





1 – Power On and Off Button	4 – Speaker
2 – Audio Jack	5 – DC Jack (Located At Back of Unit)
3 – USB Plug	6 – Battery Door (Located At Bottom of Unit)

POWER OPTIONS

Battery Installation / Replacement

The speaker system requires six (6) "AA" batteries to operate. Alkaline batteries are recommended for the longest playtime.

To install or replace batteries:

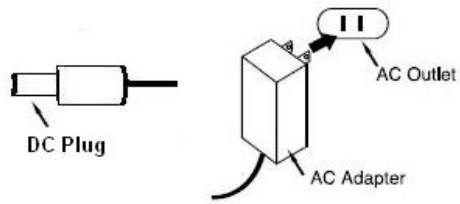
1. Remove the safety screw from the battery lid
2. Lift the battery cover to remove
3. Remove the old batteries, if replacing
4. Install new "AA" (1.5V) batteries according to the correct polarity indicated, (+) and (-)
5. Put the battery cover back on and tighten the screw back on the battery lid. Do not overturn to prevent screw threads from stripping

Precautions:

- Use only the size and type of battery specified
- Battery polarity must be inserted correctly for safe and proper use. Reversed polarity may cause damage to the unit
- If the unit will not be used for a long period, remove the batteries to prevent damage or injury from possible battery leakage
- If battery leakage occurs and comes in contact with skin, immediately flush affected area with running water (not hot) and contact nearest Poison Control Center

AC Adaptor

The speaker system may be powered using an AC adaptor. To use, insert the plug of the AC Adaptor into the speaker's DC Jack (located at the back of unit). Then plug the AC Adaptor into an AC Outlet (120V AC, 60Hz).



NOTE:

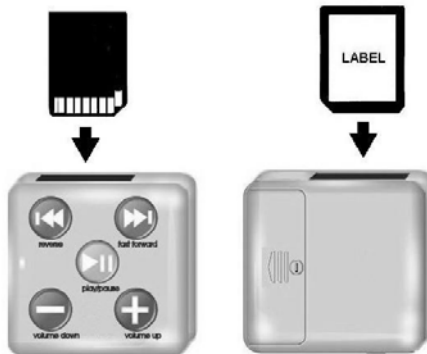
- Remove the DC plug and disconnect the AC Adaptor when not in use
- Use only adaptors with correct Input and Output specifications designated for the unit
- Use only adaptors that meet certified safety requirements and standards – e.g., UL approved

Operating the MP3/Cube Speaker System

To operate your player with the speaker system, please follow these instructions.

1) INSERT/REMOVE SD CARD

Make sure the player is turned OFF before inserting your SD card. Insert the SD card into the slot with the label side of the card facing the player's backside and the connector pins (on the back of the card) downward. See illustration. Gently press down on the SD card until it is securely in the slot.



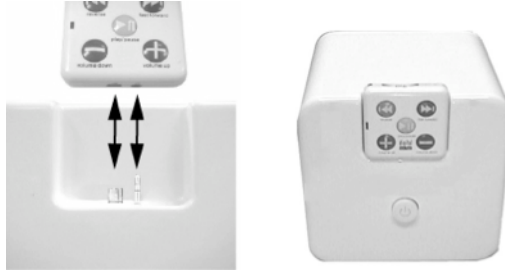
To remove the SD card, press down on top of the card and the player will eject the card from the player.

2) INSTALL PLAYER INTO THE CUBE SPEAKER SYSTEM

Insert your player into the speaker unit's carriage by sliding the player downward with the buttons facing forward and USB port and earphone jack facing down. Align the player's USB port and earphone jack to the speaker unit's USB plug and earphone plug, respectively, and gently connect together. The player should be firmly positioned in the unit's carriage.

NOTE:

- Be certain the player is properly installed into the speaker system before turning ON either the speaker unit or player
- Do NOT force the player down into the unit or damage may occur as a result



3) TURN THE PLAYER AND SPEAKERS ON

Press the POWER ON/OFF button on The Cube speaker unit to turn the unit on. This will automatically turn the player on as well. The LEDs on The Cube speaker unit and player will activate to indicate that power is on.

NOTE: The MP3 player does not require a battery when it is connected to The Cube speaker unit. The speaker system will supply power to the player through the USB connection.

4) MUSIC PLAYBACK

Press the PLAY button on the MP3 player to start listening to your song files. The LED will start to blink while in the play mode. If the MP3 player does not immediately activate after pressing the PLAY button, please wait several seconds and then press PLAY again. The MP3 player may need a moment to read the SD card.

It is suggested that you lower the volume to a safe level before pressing PLAY to prevent any excessive noise that could damage or harm your hearing.

Volume Setting

Press the VOLUME UP or VOLUME DOWN button to adjust the volume to your preference.

Fast Forward or Back

Press the FORWARD or BACK button to listen to the next or previous song, respectively. During playback of a song, you may also scroll fast forward or back through the song by pressing and holding down the FORWARD or BACK button. The song will continue at the point of the song where you release the button.

Pause

During playback, press the PLAY button to pause or stop play. To resume playback, press the PLAY button again.

NOTE: If left inactive while in pause/stop, the MP3 player will automatically turn OFF after approximately 40 seconds

5) TURN THE MP3 PLAYER AND THE CUBE SPEAKER OFF

To turn OFF the system, press the POWER ON/OFF button on The Cube speaker unit. This will automatically turn the MP3 player off as well.

NOTE: It is recommended that you disconnect the AC/DC adaptor from The Cube speaker unit when not in use.

Operating the MP3 Player

To operate your MP3 player as a personal portable device, please follow these instructions.

1) TURNING THE PLAYER ON / OFF

Press down and hold the PLAY button for approximately 3 seconds to turn ON the MP3 player. Once the LED light activates release the PLAY button.

To turn OFF the MP3 player, press down and hold the PLAY button for approximately 5 seconds until the LED light flashes, then release the PLAY button. No light indicates the power is OFF.

2) MUSIC PLAYBACK

With the MP3 player ON, earphones inserted into the earphone jack, and SD card inserted in the player, press the PLAY button to start listening to your song files. If the player does not immediately activate after pressing the PLAY button, please wait several seconds and then press PLAY again. The MP3 player may need a moment to read the SD card. Adjust the volume according to your preference. It is suggested that you lower the volume to a safe level before pressing PLAY to prevent any excessive noise that could damage or harm your hearing.

WARNING: USE THIS PRODUCT AT YOUR OWN RISK. Using the headphones continuously at high volume may result in permanent hearing loss. It is highly recommended to use your unit at moderate volume levels and under the supervision of an adult. Use this product with extreme caution to avoid accident or injury while engaging in any activity that requires your full attention. Do not use player with earphones while driving, cycling or operating any motorized vehicle. Abide by your local laws.

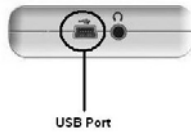
DOWNLOADING AND DELETING SONG FILES

You may download and delete your own song files through the player using a writable non-protected SD card. The MP3 player will work with most leading brand name SD cards.

Operating System Requirements: Computers with Windows XP, VISTA or MAC OS X 10.0 or higher

Attach the supplied mini-USB cable into the MP3 player and connect into computer USB port.

card
the



Make sure there is an SD inserted into MP3 player.

1. For Windows OS, once the player is properly connected to your computer it will detect the player as a removable disk. You should open the folder when the prompt asks you what to do. If there is no automatic prompt, search for the drive under "My Computer" then click on the drive to open the folder.
2. For Mac OS, an icon will appear on your desktop or the folder will automatically open. Click to open the folder if it does not automatically open.
3. To transfer song files from your computer to the SD card, click to select the song files on the computer that you want and drag into the folder
4. Wait for song files to finish copying
5. To remove song files from the card, select and click on the files you want removed then drag into your music file, "Recycle Bin" or "Trash", or right-click your mouse and select the "Delete" command.
6. After transferring or removing song files, properly eject or safely remove the MP3 player you're your computer, then unplug the cable from your computer USB port and from the MP3 player

When using Windows Media Player:

1. Open Windows Media Player 11.
2. Click on the "sync list" pull-down menu to locate the music files you want to download to the player. Then make sure to check the box next to the files you want to download.

3. Select the portable player device that you want to copy to from the right side drop down menu.
4. Click the "start sync" to start transferring music files from your computer to the player.
5. After all of the files have been transferred, safely remove the player and unplug the cable from the USB port and player.

MP3 CONNECTION ADAPTOR

Your speaker system includes an adaptor that allows you to connect other MP3 players to play song files through your speaker unit. Simply install the adaptor base into the speaker unit's carriage as you would with your regular

player as described in "Operating Your System", Step 2.



Once the adaptor is installed, connect the earphone plug into the MP3 player's earphone jack and follow the instructions as described in "Operating Your System", Step 3.

NOTE: The speaker unit will not supply power to other MP3 players. These MP3 players will require their own power source.

Troubleshooting	
------------------------	--

Problem	Solution
---------	----------

<p>No power</p>	<ul style="list-style-type: none"> • Check if the battery(s) is installed correctly • Check that the power is ON • Install a new battery(s) • Check if the CD plug and/or AC adaptor are plugged in correctly • Be certain that the AC adaptor has the correct specifications and is working properly
<p>No sound can be heard</p>	<ul style="list-style-type: none"> • Adjust the volume level • If using earphones, check that they are properly connected • Try a different set of earphones • Check that the SD card is suitable for this player • Check if your music files are not corrupted • Check if your music file format is supported by the player (This player is not able to playback DRM-protected files) • Check if the player is

	<p>properly connected to the speaker unit</p> <ul style="list-style-type: none"> • Check if the LED lights are activated (power ON) • Reset the speaker system and/or player by removing the battery(s) for a few seconds, then reinstall
<p>Files not able to transfer</p>	<ul style="list-style-type: none"> • Check if the cable plugs are properly connected • Check if your computer's operating system supports the player • Check if the SD card has enough memory • Reset the player by removing the battery for a few seconds, then reinstall • Disconnect AC adaptor, then reinstall • Check if the files are suitable for the SD card • Check if the files are DRM-protected, as they are not transferable

Player or speaker unit freezes and does not activate	<ul style="list-style-type: none"> • Disconnect player from USB cable • Reset the player by removing the battery(s) for a few seconds then reinstall • Install a new battery(s) • Disconnect AC adaptor, then reinstall
---	---

MP3 Player Technical Specifications
--

Operating Systems	Windows XP or Vista, Mac OS X 10.0 or higher
Music format support	MPEG 1, 2, 3, WMA
Bit rate	Mp3: 8-320kbps Wma: 32-192kbps

Frequency range	20Hz ~ 20KHz
Type of port	2.0, Compatible with USB1.1
Memory media	SD Card
Memory size	32MB to 4GB
Battery	"AAA" (1.5 volt) alkaline battery
File system	FAT32

Cube Speaker System Technical Specifications

Peak Music Power Output	24W
Amplifier output Power	4W*2(THD=1% ,fin=1KHz)

Frequency Response	80Hz-20KHz
Speaker Size	2.75"
Speaker Power	5W
Speaker Impedance	8ohm
Battery	"AAA" (1.5 volt) alkaline battery x 6
AC Adaptor	Input: AC100V, 50Hz Output: DC6V, 800mA

FCC Information

**U.S. - FEDERAL COMMUNICATIONS COMMISSION
(FCC)**

This device complies with Part 15 of the FCC Rules.

Operation is subject to the following conditions:

(1) This device may not cause harmful interference, and

(2) This device must accept any interference received, including interference that may cause undesired operation.

(3) Shielded cables must be used with this unit to ensure compliance with the Class B FCC limits

WARNING: Changes or modifications to this unit not expressly approved by the party responsible for compliance could void the user's authority to operate the equipment.

NOTE: This equipment has been tested and found to comply with the limits for a Class B digital device, pursuant to Part 15 of the FCC Rules. These limits are designed to provide reasonable protection against harmful interference in a residential installation. This equipment generates uses and can radiate radio frequency energy and, if not installed and used in accordance with the instructions, may cause harmful interference to radio communications. However, there is no guarantee that interference will not occur in a particular installation. If this equipment does cause harmful interference to radio or television reception, which can be determined by turning the equipment off and on, the user is encouraged to try to correct the interference by one or more of the following measures:

- Reorient or relocate the receiving antenna.
- Increase the separation between the equipment and receiver.
- Connect the equipment into an outlet on a circuit different from that to which the receiver is needed.
- Consult the dealer or an experienced radio/TV

technician for help.



This Class B digital apparatus complies with Canadian ICES-003.
Cet appareil numérique de la classe B est conforme à la norme NMB-003 du Canada.

Limited 90-Day Warranty Information

WARRANTY COVERAGE:

Youtopia LLC warrants this product to be free from defects in workmanship and materials, under normal use and conditions, for a period of ninety (90) days from the date of original purchase. Youtopia LLC's warranty obligation is limited to the terms set forth below.

Who is covered:

Youtopia LLC warrants the product to the original purchaser or the person receiving the product as a gift against defects in materials and workmanship as based on the date of original purchase ("Warranty Period") from an authorized dealer or authorized retailer. The original sales receipt showing the product name and the purchase date from an authorized retailer is considered such proof.

What is covered:

The Youtopia LLC warranty covers new products if a mechanical defect arises and a valid claim is received by Youtopia LLC within the Ninety (90) Day Warranty Period. At its option, Youtopia LLC will either (1) repair the product at no charge, using new or refurbished replacement parts, or (2) exchange the product with a product that is new or which has been manufactured from new, or serviceable used parts and is at least functionally equivalent or most comparable to the original product in Youtopia LLC's current inventory, or (3) refund the original purchase price of the product.

Youtopia LLC warrants replacement products or parts provided under this warranty against defects in materials and workmanship from the date of the replacement or repair for ninety (90) days or for the remaining portion of the original product's warranty, whichever provides longer coverage for the buyer. When a product or part is exchanged, any replacement item becomes the purchasers' property and the replaced item becomes

Youtopia LLC's property. If a refund is granted, the returned product becomes Youtopia LLC's property.

Before returning this product for service, please first replace the batteries (if applicable) with fresh ones, as exhausted or defective batteries are the most common cause of problems encountered.

If service is still required:

- 2) Pack the unit in a well padded, heavy corrugate box.
- 3) Enclose a photocopy of the sales receipt or proof of purchase.
- 4) Enclose a brief explanation of the problem as well as your return address and contact information
- 5) Send the unit prepaid and insured to the Youtopia LLC Service Center listed below:
Youtopia LLC
Attn: Service Department
397 Ridge Road, Suite 5
Dayton, NJ 08810

REPLACEMENT PRODUCT OR REFUND CAN ONLY BE SENT IF ALL WARRANTY REQUIREMENTS ARE MET. FAILURE TO FOLLOW ALL REQUIREMENTS CAN RESULT IN A DELAY.

What is not covered:

The Limited Warranty applies only to the products manufactured by or for Youtopia LLC that can be identified

by the trademark, trade name, or logo affixed to it. This Limited Warranty does not apply to any non-Youtopia LLC hardware product or any software, even if packaged or sold with the product. Non-Youtopia LLC manufacturers, suppliers, or publishers may provide a separate warranty for their own products packaged with the bundled product.

Youtopia LLC is not liable for any damages to or loss of any programs, data, or other information stored on any media contained with the product, or any non-Youtopia LLC product or part not covered by this warranty. Recovery or reinstallation of programs, data, or other information is not covered under this Limited Warranty.

Disclaimer of Warranty:

This warranty is valid only if the product is used for the purpose for which it was designed. It does not cover (1) products which have been damaged by negligence or willful actions, misuse or accident, or which have been modified or repaired by unauthorized persons; or (2) cracked or broken cabinets, or units damaged by excessive heat.

This warranty is only valid in the United States of America.



© 2008 Youtopia LLC, All rights reserved

Printed in China