

Table of Contents

Chapter 1	Introducing NETBOOK	1
1.1	Notes for this manual	1
1.2	Symbols for this manual	1
1.3	Safety precautions.....	1
1.4	Introduction.....	3
	Top side	3
	Right side.....	5
	Left side	6
	Rear side	6
1.5	Product features	7
1.6	Preparing your NETBOOK	7
Chapter 2	Getting started	8
2.1	Using AC power	8
2.2	Using battery power.....	9
2.3	Touchpad usage	10
2.4	Emergency shutdown.....	11
Chapter 3	Using the NETBOOK	12
3.1	Basic operation	12
	Power on	12
	Desktop.....	12
	Shut down	12
	My Computer.....	12
	My documents	13
	Storage Card	13
3.2	Network	14
	Network connection / disconnection	14
	IE browser	15
	Windows messenger.....	15

3.3 Entertainment.....	16
Video play	16
Photo browsing.....	16
Media Player.....	17
3.4 Office software application	17
Microsoft WordPad	17
Microsoft Word (Text Maker).....	17
Microsoft Excel (Plan Maker).....	18
PowerPoint (Presentation).....	18
FoxitReader	18
3.5 Others.....	19
Calculate	19
WinRAR	19
Chapter 4 System settings.....	20
4.1 Certificates (Optional).....	20
4.2 Date/time.....	20
4.3 Display (Optional)	21
4.4 Internet options	21
4.5 Keyboard.....	22
4.6 Mouse (optional).....	22
4.7 Network and dial-up connections.....	23
4.8 Owner.....	23
4.9 Regional settings.....	24
4.10 Remove programs	25
4.11 PC connection (Optional)	25
4.12 System.....	26
4.13 Volume & Sounds.....	27
4.14 Power	27
4.15 Password	28
4.16 Storage Manager	28

Chapter 1 Introducing NETBOOK

1.1 Notes for this manual

Information provided in this manual may vary from model to model, so your model may not have some of the features described in this book. Pictures of features may also be different from actual one. This book reserves the right to change any information without any notice.

1.2 Symbols for this manual

A few notes and warnings are used throughout this guide, allowing you to complete certain tasks safely and effectively. These notes have different degrees of importance as follows.



WARNING: Important information that must be followed for safe operation.



IMPORTANT: Vital information that must be followed to prevent damage to data, components, or persons.



TIP: Tips for completing tasks.



NOTE: Information for special situations.

1.3 Safety precautions

The following safety precautions will increase the life of the NETBOOK.

Follow all precautions and instructions. Except as described in this manual, refer all servicing to qualified personnel. Do not use damaged power cords, accessories, or other peripherals. Do not use strong solvents such as thinners, benzene, or other chemicals on or near the surface.

- Disconnect the AC power and remove the battery packs before cleaning. Wipe the NETBOOK using a clean cellulose sponge or chamois cloth dampened with a solution of nonabrasive detergent and a few drops of warm water and remove any extra moisture with a dry cloth.
- DO NOT place on uneven or unstable work surfaces. Seek servicing if the casing has been damaged.
- DO NOT leave the NETBOOK on your lap or any part of the body to prevent discomfort or injury from heat exposure.
- DO NOT press or touch the display panel. Do not place together with small items that may scratch or enter the NETBOOK.
- DO NOT place or drop objects on top and do not shove any foreign objects into the NETBOOK.
- DO NOT expose to strong magnetic or electrical fields.
- DO NOT expose to dirty or dusty environments. Do not operate during a gas leak.
- DO NOT expose to or use near liquids, rain, or moisture.
- DO NOT use the modem during electrical storms.
- DO NOT carry or cover a NETBOOK that is powered on with any materials that will reduce air circulation such as a carrying bag.
- SAFE TEMP: This NETBOOK should only be used in environments with ambient temperatures between 5°C and 40°C.
- INPUT RATING: Refer to the rating label on the rear side of the NETBOOK and be sure that your power adapter complies with the rating.

Transportation precautions

To prepare the NETBOOK for transport, you should turn it OFF and disconnect all external peripherals to prevent damage to the connectors. Therefore, you should not transport the NETBOOK while the power is still ON. Close the display panel and check that it is latched securely in the closed position to protect the keyboard and display panel.

The NETBOOK's surface is easily dulled if not properly cared for. Be careful not to rub or scrape surfaces when transporting your NETBOOK. You can purchase an optional carrying case for protection from dirt, water, shock, and scratches.

Charging Your Batteries

If you intend to use battery power, be sure to fully charge your battery pack and any optional battery packs before going on long trips. Remember that the power adapter charges the battery pack as long as it is plugged into the computer and an AC power source. Be aware that it takes much longer to charge the battery pack when the NETBOOK is in use.

Airplane Precautions

Contact your airline if you want to use the NETBOOK on the airplane. Most airlines have restrictions for using electronic devices. Most airline allow electronic use only between but not during take offs and landings.



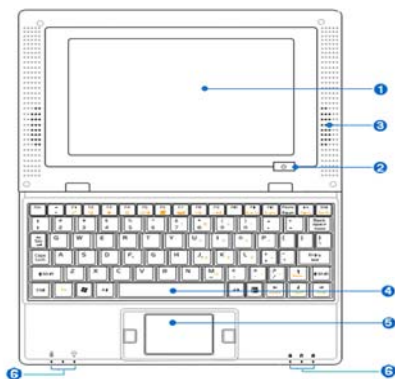
There are three main types of airport security devices: X-ray machines (used on items placed on conveyor belts), magnetic detectors (used on people walking through security checks), and magnetic wands (hand-held devices used on people or individual items). You can send your NETBOOK and diskettes through airport X-ray machines. However, it is recommended that you do not send your NETBOOK or diskettes through airport magnetic detectors or expose them to magnetic wands.

1.4 Introduction

E700 (with Windows CE system) is a low cost broadband access terminal for today's world of communications convergence and digital multimedia entertainment. It provides multimedia entertainment, High-speed broadband internet access, and work on the go! It is equipped with various functions, such as electronic-book, MP3 play, Game player, enlarged PDA, and common business software such as web browsing, word processing, spreadsheets and more. Perfect for the light business traveler, student, and every kid wanting to enjoy the experience of exploring the world of broadband multi-media! The best way to learn to use your new product is to play and experiment, and refer to the online help and web links provided!

Top side

Refer to the diagram below to identify the components on this side of the NETBOOK.



1. Display panel

The display panel functions the same as a desktop monitor. The NETBOOK uses an active matrix TFT LCD, which provides excellent viewing like that of desktop monitors. Unlike desktop monitors, the LCD panel does not produce any radiation or flickering, so it is easier on the eyes. Use a soft cloth without chemical liquids (use plain water if necessary) to clean the display panel.

2. Power switch

The power switch allows powering ON and OFF the NETBOOK and recovering from STR. Press the switch once to turn ON and hold it turn OFF the NETBOOK. The power switch only works when the display panel is opened.

3. Audio speaker system

The built-in stereo speaker system allows you to hear audio without additional attachments. The multimedia sound system features an integrated digital audio controller that produces rich, vibrant sound (results improved with external stereo headphones or speakers). Audio features are software controlled.

4. Keyboard

The keyboard provides keys with comfortable travel (depth at which the keys can be depressed) and palm rest for both hands.

5. Touchpad and buttons

The touchpad and its buttons comprise a pointing device that provides the same functions as a desktop mouse. Scrolling is available to allow easy web and document navigation.

6. Status indicators (front)



Battery charge indicator

The battery charge indicator (LED) shows the status of the battery's power as follows:

ON: The NETBOOK battery is charging when AC power is connected.

OFF: The NETBOOK battery has been completely charged or drained without charging.



Power indicator

The power indicator lights when the NETBOOK is turned ON and blinks slowly when the NETBOOK is in the Save-to-RAM (Suspend) mode. This indicator is OFF when the NETBOOK is turned OFF.



Num Lock indicator

When the light turns green, it means the Num lock on the keyboard (Num Lock) key has been activated. When the button activated, you can use embedded numeric keypad.

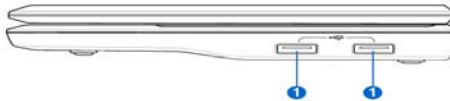


Caps lock indicator

When the light turns green, it means the caps lock on the keyboard (Caps Lock) key has been activated. When the activation buttons all playing out of the alphabet keys are all capital letters.

Right side

Refer to the diagram below to identify the components on this side of the NETBOOK.

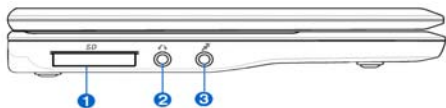


1. USB host port (2.0/1.1)

The USB (Universal serial bus) port is compatible with USB 2.0 or USB 1.1 devices such as keyboards, storage devices, connected in a series up to USB1.1 and USB2.0. USB allows many devices to run simultaneously on a single computer, with some peripherals acting as additional plug-in sites or hubs. Also, the USB supports hot-swapping function.

Left side

Refer to the diagram below to identify the components on this side of the NETBOOK.



1. Memory card slot

The built-in memory card reader can read MMC/SD cards from devices such as digital cameras, MP3 players, mobile phones, and PDAs.

2. Headphone output jack

The stereo headphone jack (3.5mm) connects the NETBOOK's audio out signal to amplified speakers or headphones. Using this jack automatically disables the built-in speakers.

3. Microphone jack

The microphone jack is designed to connect the microphone used for voice narrations, or simple audio recordings.

Rear side

Refer to the diagram below to identify the components on this side of the NETBOOK.



1. Power (DC) input

The supplied power adapter converts AC power to DC power for use via this jack. Power supplied through this jack supplies power to the NETBOOK and charges the internal battery pack. To prevent damage to the NETBOOK and battery pack, always use the supplied power adapter.



Caution: May become warm to hot when in use. Be sure not to cover the adapter and keep it away from your body.

2. LAN port

The eight-pin RJ-45 LAN port supports a standard Ethernet cable for connection to a local network. The built-in connector allows convenient use without additional adapters.

3. USB host port (2.0/1.1)

The USB (Universal serial bus) port is compatible with USB 2.0 or USB 1.1 devices such as keyboards, storage devices, connected in a series up to USB1.1 and USB2.0. USB allows many devices to run simultaneously on a single computer, with some peripherals acting as additional plug-in sites or hubs. Also, the USB supports hot-swapping function.

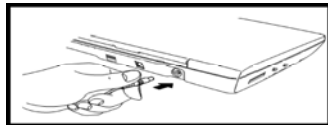
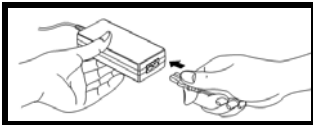
1.5 Product features

- Processor: ARM926
- Display terminal: 7-Inch 800*480 high resolution TFT-LCD digital screen, True color image display
- Input: Standard 80key keyboard and Mouse
- Sound card: AC97voice card
- Communication: Broadband internet access, 10/100MB Ethernet port, Build in Wireless LAN adapter
- System: Embedded Windows CE 6.0 operating system –high security & virus free

1.6 Preparing your NETBOOK

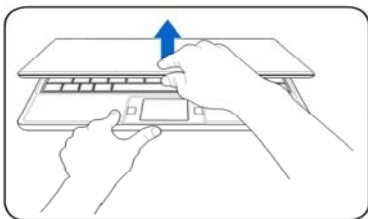
These are only quick instructions for using your NETBOOK. Read the following chapters for detailed information.

1. Connect the AC power adapter

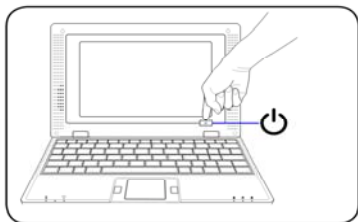


The wall outlet differs in type by country. Your NETBOOK ships with an adapter compliant with your national standard. The illustration above is for reference only and may not exactly show your specific configuration.

2. Open the display panel



3. Turn ON the NETBOOK



When you open the display panel, do not force it down to the table or else the hinges may break!

Chapter 2 Getting started

2.1 Using AC power

The NETBOOK power comprises two parts, the power adapter and the battery power system. The power adapter converts AC power from a wall outlet to the DC power required by the NETBOOK. Your NETBOOK comes with a universal AC-DC adapter for connection to any 100V-120V as well as 220V-240V outlets without setting switches or using power converters. Different countries may require an adapter to connect the provided US-standard AC power cord to a different standard. Most hotels

provide universal outlets to support different power cords as well as voltages. It is always best to ask an experienced traveler about AC outlet voltages before traveling.



The power adapter may become warm to hot when in use. Be sure not to cover the adapter and keep it away from your body.



Damage may occur if you use a different adapter to power the NETBOOK or use the NETBOOK's adapter to power other electrical devices. If there is smoke, burning scent, or extreme heat coming from the AC-DC adapter, seek servicing. Seek servicing if you suspect a faulty AC-DC adapter. You may damage both your battery pack(s) and the NETBOOK with a faulty AC-DC adapter.

2.2 Using battery power

The NETBOOK is designed to work with a battery pack. The battery pack consists of a set of battery cells housed together. A fully charged pack will provide several hours of battery life. Additional battery packs are optional and can be purchased separately through an NETBOOK retailer. Remember to fully charge the battery before first use and whenever it is depleted to prolong battery life.




Only use battery packs and power adapters supplied with this NETBOOK or specifically approved by the manufacturer or retailer for use with this model or else damage may occur to the NETBOOK.

Battery care

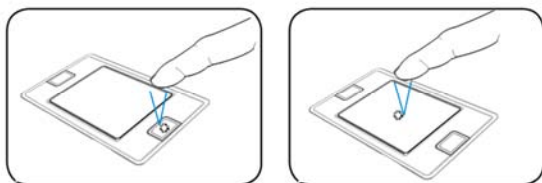
The NETBOOK's battery pack, like all rechargeable batteries, has a limit on the number times it can be recharged. The battery pack's useful life will depend on your environment temperature, humidity, and how your NETBOOK is used. It is ideal that the battery be used in a temperature range between 5°C and 40°C. You must also take into account that the NETBOOK internal temperature is higher than the outside temperature. Any temperatures above or below this range will shorten the life of the battery. But in any case, the battery pack's usage time will eventually decrease and a

new battery pack must be purchased from an authorized dealer for this NETBOOK. Because batteries also have a shelf life, it is not recommended to buy extras for storing.

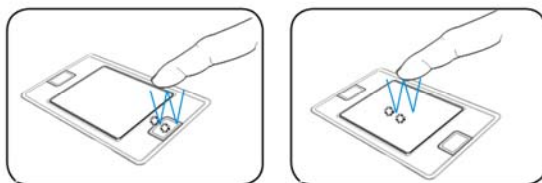
 For safety reasons, DO NOT throw the battery in fire, DO NOT short circuit the contacts, and DO NOT disassemble the battery. If there is any abnormal operation or damage to the battery pack caused by impact, turn off the NETBOOK and contact an authorized service center.

2.3 Touchpad usage

Clicking/Tapping-With the cursor over an item, press the left button or use your fingertip to touch the touchpad lightly, keeping your finger on the touchpad until the item is selected. The selected item will change color. The following 2 illustrations produce the same results.

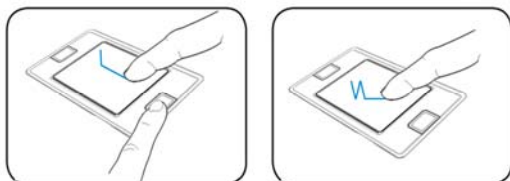


Double-clicking/ Double-tapping-This is a common skill for launching a program directly from the corresponding icon you select. Move the cursor over the icon you wish to execute, press the left button or tap the pan twice in rapid succession, and the system launches the corresponding program. If the interval between the clicks or taps is too long, the operation will not be executed. The following 2 illustrations produce the same results.




Dragging-Dragging means to pick up an item and place it anywhere on the screen you wish. You can move the cursor over the item you select, and while keeping the left

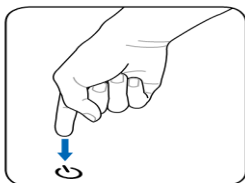
button depressed, moving the cursor to the desired location, then release the button. Or, you can simply double-tap on the item and hold while dragging the item with your fingertip. The following illustrations produce the same results.



2.4 Emergency shutdown

In case your operating system cannot properly turn off, there is an additional way to shutdown your NETBOOK:

Shutdown: Hold the power button  until the system shut down.



Your NETBOOK isn't with a reset button, so you can not reset your NETBOOK by it. If you want to turn on your NETBOOK after emergency shutdown, you should wait for 3~5 seconds, and then press the power button once again.



DO NOT use emergency shutdown while data is being written or read; doing so can result in loss or destruction of your data.

Chapter 3 Using the NETBOOK

3.1 Basic operation

Power on

Power on and the computer enters the loading wince picture below after a few seconds.

Desktop




This interface is the desktop interface accessible to program.

The same style as other Windows systems, “My Computer” can be accessible from here.



Note: Clicking an icon twice is double click and clicking once is click. Clicking an icon is right clicking the icon; all the right clicks of the icon below are such an operation.

Shut down

Click on  Start and select “Turn off” from list.

My Computer


Double click “My Computer” and the following interface will appear.

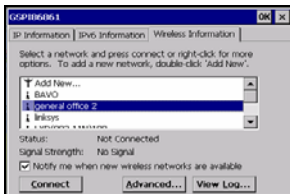
These folders can be deleted, renamed and also can be copied to other folders.

3.2 Network

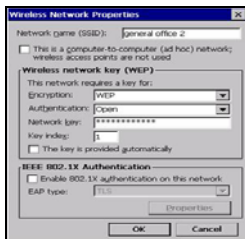
Network connection / disconnection

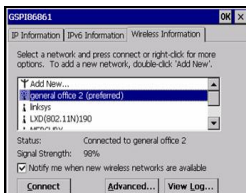
1. Wireless connection

- (1) Click “WIFI Power” icon on the desktop, click the bottom “Power on”-“OK”.
- (2) Click the wireless icon  in taskbar at bottom right corner, as shown in the figure. The computer will automatically search for WIFI network, and arrange it in line with strength of signal. Select your favorite network as the figure below shows and click “Connect”.



- (3) As it is shown in the figure, configure it in the dialog that pops up according to actual conditions (if the WIFI network requires password, please inquire network administrator, because password must be input to connect). The display after connected to WIFI network is as shown in the figure below.



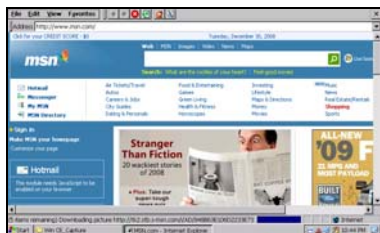


2. Wireless disconnection

If you want to disconnect the network, at the “Wireless Information” item, you can right click the network which has been connected, choose “Delete”, and then the network will be disconnected.

IE browser

Click “internet explorer” icon on the desktop, input website by means of keyboard, as shown in the figure below:



Windows messenger

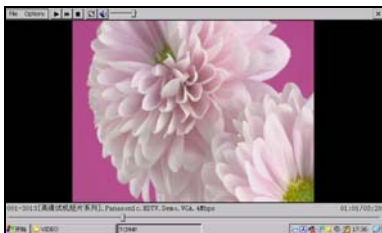
Click “Windows messenger” icon on the desktop, input account number and password by means of keyboard, as shown in the figure below:



3.3 Entertainment

Video play

Open video folder, as shown in the figures below. Double click a video play file to start playing. The player is TCPMP. Click the icon in menu bar or press the left key for full screen playing. Press the left key once again, and then the video will stop playing and quit full screen.






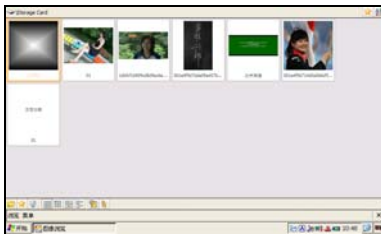
Press  to play/pause , Press “File” of  &  to jump to next video play file. It works like standard TCPMP.

Photo browsing

Click “Image Viewer” icon, choose the image format, and then open the photo folder, as shown in the figures below. Double click the photo to start browsing.



Media Player

On the desktop, double click the “Media Player” icon and click menu bar “file”-“open”, chose your file, The Media player will play it .



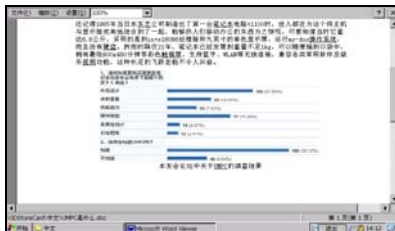
3.4 Office software application

The office system of Mini laptop consists of Microsoft WordPad, Text Maker, Plan Maker, Presentation, and FoxitReader, as shown in the figures below.

Microsoft WordPad



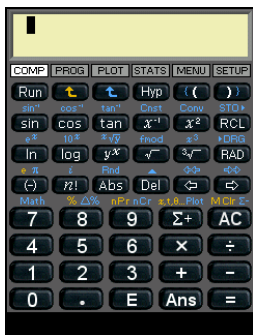
Microsoft Word (Text Maker)




3.5 Others

Calculate

It performs all standard mathematics operations. This works like PC windows standard calculator.



WinRAR

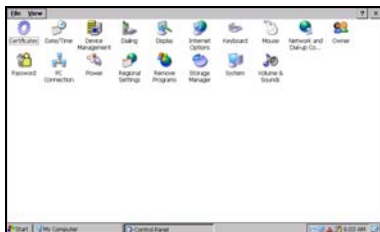
Similar you can find  icon on the desktop ,about operation the “winrar”, please find the correlative data.

The WinRAR support “Winrar” and “WinZip” format.



Chapter 4 System settings

Double click “Control panel” folder in “My Computer” and the following interface will appear.



4.1 Certificates (Optional)

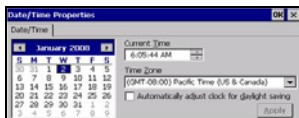
Double click “Certificates” icon in “Control panel” and the following interface will appear.



User can view & alter digital certificate of legal programs.

4.2 Date/time

Double click “Date/time” icon in “Control panel” and the following interface will appear.



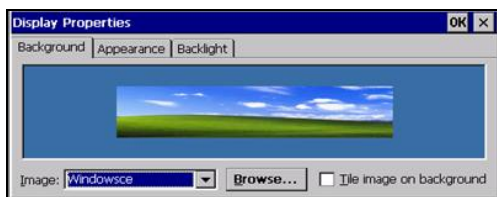
To display and set time, date and time zone of the current system. User can set the time, date and time zone according to actual conditions. The application of this function is similar to the “Time and date” setting in “Control panel” of PC.



NOTE: the “Time and Date” setting can also be opened by clicking directly the time in taskbar on the desktop.

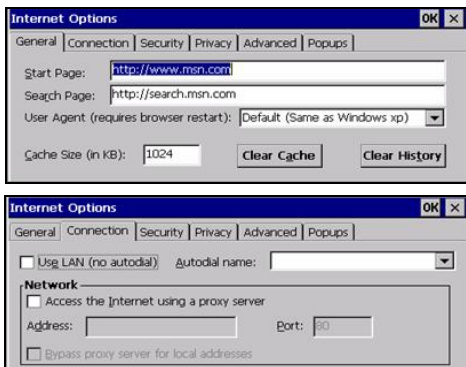
4.3 Display (Optional)

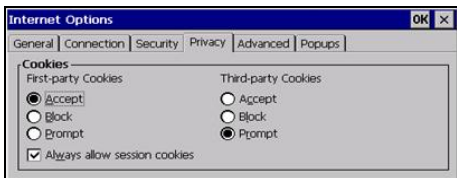
Double click “Display” icon in “Control panel” and the following interface will appear. User can set different display setting like Background, Appearance & Backlight.




4.4 Internet options

Double click “Internet options” icon in “Control panel” and the following interface will appear:





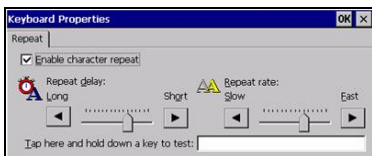
 **TIPS:** Users are recommended to use the default and not to alter the network setting rashly. The ex-works set defaults have been adjusted to the optimum status. Advanced level users can set upon their conditions.

4.5 Keyboard

Double click “Keyboard” icon on “Control panel” and the following interface will appear.

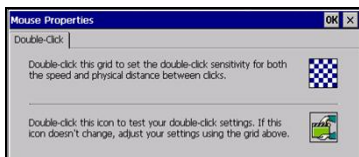
This is much the same as the function of “keyboard” in “Control panel” of PC. The function is mainly used to adjust the repeat input of soft keyboard and the setting of repeat delay time. A test dialog is available as shown below to test your setting.

The “Enable character repeat” in the interface is the choice box of “Enable character repeat”; “Repeat delay” is for setting repeat rate. The white zone at the bottom is a zone to test the two settings by clicking the zone and pressing some key.



4.6 Mouse (optional)

Double click “Mouse” icon in “Control panel” and the following interface will appear.

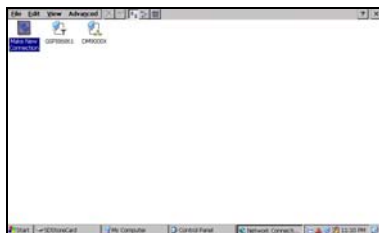


Double clicks the grid icon above to set the mouse double-click speed.

Double-click the icon below to test the mouse double-click setting.

4.7 Network and dial-up connections

Double click “Network and Dial-up connections” icon in “Control panel” and the following interface will appear.

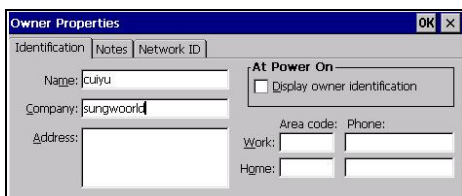


Double click and set your settings for internet, these settings are provided by your internet service provider. Set your TCP IP setting as shown in below figure.

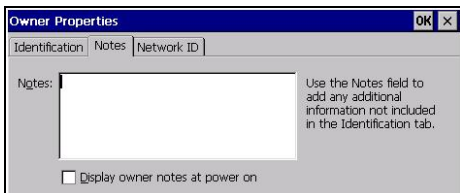


4.8 Owner

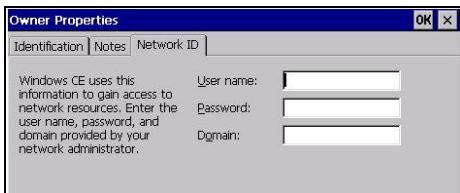
Double click “Owner” icon in “Control panel” and the following interface will appear.



Set and display the owner properties information of the current system.



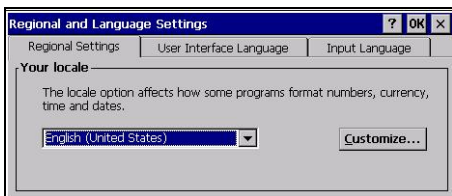
Use the “Notes” field to add any additional information not included in the options.



IMPORTANT: Windows CE uses this information to gain access to network resources, enter the user name, password and domain provided by your network administrator.

4.9 Regional settings

Double click “regional settings” icon in “Control panel” and the following interface will appear.



Display the current regional settings and the region where the setting is.

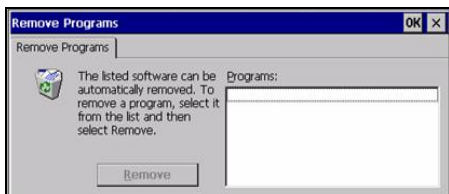




“User interface language” and “input language” are default settings of the system.

4.10 Remove programs

Double click “Remove programs” icon in “Control panel” and the following interface will appear.



Display the installed application programs in the current system and to uninstall the installed application programs. In order to prevent user from deleting the system’s own application software by mistake, none of the software of the system’s own appears in the list.

4.11 PC connection (Optional)

Double click “PC connection” icon in control panel following and the following interface will appear.



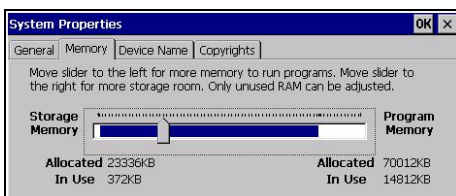
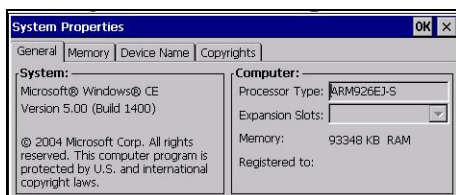
User can Enable/disable direct connection to the desktop computer. For connection with desktop computer use USB.



TIP: The baud rate of the device & desktop computer must be the same.

4.12 System

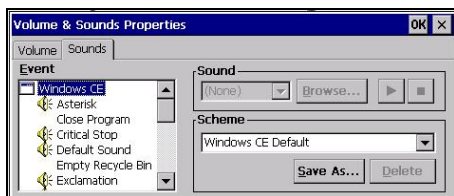
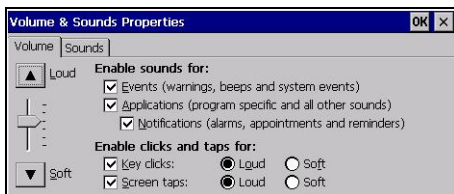
Double click “System” icon in “Control panel” and the following interface will appear.



Display the system properties of the system, e.g. process type, memory size, etc. Memory size can be altered here. User can perform the operations following the prompts on the tab.

4.13 Volume & Sounds

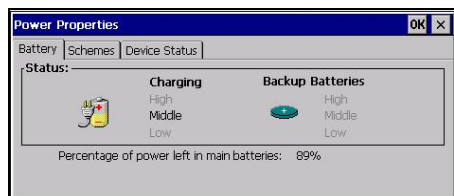
Double click “Volume & sounds” icon in “Control panel” and the following interface will appear.



Display and set the volume and sound scheme of the current user.

4.14 Power

Double click “Power” icon in “Control panel” and the following interface will appear.



“Percentage of power left in main batteries” is the display of percentage of power left in main batteries.



NOTE: The planning of integral power of this Mini laptop is much the same as the “Power” management in control panel of PC. Advanced level users can set upon their specific conditions and general users can adopt the defaults.

4.15 Password

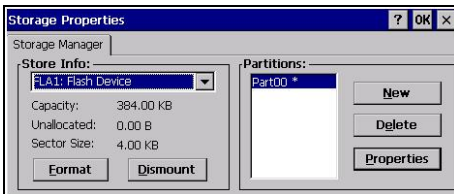
Double click "Password" icon in "Control panel" and the following interface will appear.



This is use to protect personal privacy and data security. Power on password protection or screen saver password protection can be set. "Password" is for inputting password. "Confirm password" is for confirming password (the passwords input into these two boxes must be the same) "At power on" is password protection when it is power on "Screen saver" is password protection for screen saver.

4.16 Storage Manager

Double click "Storage Manager" icon in "Control panel" and the following interface will appear.



The main function is Format and delete storage device. in the “store info” list, you can select a storage device and click the lower left “Format” button, at this time you have

the choice of equipment will be formatted, If the system prompted “unable to format store” ,please click “Dismount” And then click “Format”.



If it is not necessary, do not choose to format storage devices
Disk format will be loss your data and disk drive



If at any time in the future you should need to dispose of this product please Note that:
Waste electrical products should not be disposed of with household waste. Please recycle where facilities exist. Check with your Local Authority or retailer for recycling advice. (Waste Electrical and Electronic Equipment Directive)

Changes or modifications not expressly approved by the party responsible for compliance could void the user's authority to operate the equipment.

This equipment has been tested and found to comply with the limits for a Class B digital device, pursuant to Part 15 of the FCC Rules. These limits are designed to provide reasonable protection against harmful interference in a residential installation. This equipment generates uses and can radiate radio frequency energy and, if not installed and used in accordance with the instructions, may cause harmful interference to radio communications. However, there is no guarantee that interference will not occur in a particular installation. If this equipment does cause harmful interference to radio or television reception, which can be determined by turning the equipment off and on, the user is encouraged to try to correct the interference by one or more of the following measures:

- Reorient or relocate the receiving antenna.
- Increase the separation between the equipment and receiver.
- Connect the equipment into an outlet on a circuit different from that to which the receiver is connected.
- Consult the dealer or an experienced radio/TV technician for help