



"SOLAR-POWERED" MULTIPOINT SPEAKERPHONE WITH AUTO-POWER-ON FEATURE

BC976S User Manual

1. About Bluetooth Speakerphone

This versatile Bluetooth speakerphone is specially designed for the user to enjoy the convenience and freedom of wireless communication. This truly handsfree speakerphone has many applications in the home, office, or car with any wireless Bluetooth compatible technologies. It has an advanced built-in microphone with Digital Sound Processor (DSP) solution for echo cancellation and noise suppression that gives you impeccable full duplex sound quality.

2. About Bluetooth Technology

Bluetooth wireless technology is set to revolutionize personal connectivity by providing freedom from wired connections - enabling links and connectivity between notebook/laptop, mobile phones, portable handheld devices and other Bluetooth enabled devices within 10 meters. Utilizing global sound and digital data 2.4GHz ISM transmission, it facilitates global communication in a way you have never dreamed of!

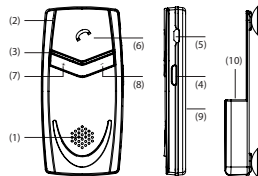
3. Getting to Know Your Bluetooth Speakerphone

To use your Bluetooth speakerphone, please follow these simple steps:

- Charge your speakerphone. Prior to using the speakerphone, it is recommended to charge the battery fully for the first time. Normal full charge time is 2 hrs. (approx.)
- Place your speakerphone and a Bluetooth-enabled device within 1 meter for pairing.
- Ensure your speakerphone and Bluetooth-enabled device is placed within 10 meters during operation to ensure connectivity. (Obstructions could cause shorter sensing distances.)

4. Appearance and Function

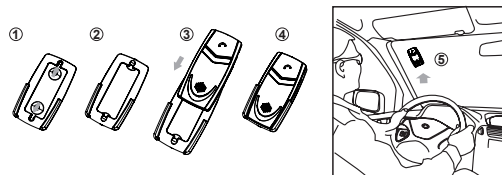
- Speaker
- Microphone
- LED
- Mode Button
- Charging Socket (Micro 5-pin USB)
- MFB Button (Multi-Function Button)
- Volume Increase (V+)
- Volume Decrease (V-)
- Solar Panel
- Windshield Mount



1

5. Recommend Installation Position

It is recommended that the speakerphone is positioned on to the top of the left side of the windshield as shown in the pictures below:



WARNING: Do not place or store the speakerphone over the area of the automobiles safety airbag deployment, or it may cause serious injury when a safety airbag deploys.

6. Charging Your Bluetooth Speakerphone

The Bluetooth speakerphone comes with a built-in rechargeable battery. Prior to using the speakerphone, it is recommended to charge the battery fully for the first time.

Using the car charger

- Insert the car charger completely into the charging slot until the LED flash red.
- Normal full charge time is 2 hours. (approx.), and the LED will flash off when charge is completed.

Using solar power

- Direct the solar panel on the back side of the speakerphone toward sun. (Please refer to the recommended installation position, as mentioned above.)
- If the speakerphone receives sufficient sunlight for 2 hours, you can talk for duration of up to 1 hour. Using solar power charge, the operation time (the talk time and the standby time) will be extended continuously without any additional charge required by the car charger.

WARNING: Do not attempt to charge the speakerphone with any charger other than the one provided. Using another charger may damage or destroy the speakerphone.

7. Turning ON/OFF the Speakerphone

Power ON: When the speakerphone is in OFF mode, press and hold the "MFB" for 3

seconds until you hear a short beep. The flashing blue LED light indicator comes on, and then the speakerphone will automatically connect to the mobile phone which has been paired already.

Power OFF: Speakerphone is under standby mode, press and hold the "MFB" button for 3 seconds until you hear a short beep.

Auto-Power ON: When the speakerphone was not powered off by pressing the "MFB" button, it would be power on and attempt to connect with the last connected mobile phones automatically when there are any small movements (such as move the speakerphone, close the car door, start the engine and etc.) to wake up the speakerphone.

Note: When bring the speakerphone in travel or during transit, please press and hold the "MFB" to power off the speakerphone to avoid the speakerphone to be repeat power on/off during the trip.

8. Pairing

Prior to using the speakerphone for the first time, you must pair it with a Bluetooth-enabled device. The steps below describe pairing instructions for a typical Bluetooth-enabled mobile phone.

- Place the speakerphone and mobile phone no more than 1 meter apart.
- Ensure the speakerphone is in the OFF mode.
- Press and hold the "MFB" button for 5 seconds until the LED light flashes red and blue alternatively, indicating it is now ready for pairing.
- Activate the Bluetooth function on your mobile phone and search for accessible Bluetooth devices, referring to your mobile phone user guide for details if required.
- Select "BT Speaker" from the list.
- Enter the pre-programmed code "0000" and press "OK" to pair the speakerphone and the mobile phone. When pairing is completed, the blue and red LED light will stop flashing, the speakerphone is in the standby mode with the blue LED light flashing every 3 seconds.
- Press "Return" to go back to your mobile phone's main menu. Place the mobile phone and the speakerphone within 10 meters sensing distance. You should now be able to make and receive calls using your speakerphone.

Note: If the pairing cannot be completed within 2 minutes after the pairing mode is activated, the speakerphone will power OFF automatically. Please repeat the steps above to pair the speakerphone and mobile phone again.

3

9. Connection/Link between Speakerphone and Mobile Phone

After pairing is completed, the speakerphone is always in standby mode. Before you place or answer a call, if the headset icon is not shown on the mobile phone screen, please follow the steps below to activate the Bluetooth connection/link through your mobile phone or speakerphone until the headset icon is on the screen.

- On phone: Select the "BT Speaker" from the paired list on your phone screen.
- On speakerphone: Short press "MFB" and select "Accept" on the phone screen to accept connection.

10. Disconnection between Speakerphone and Mobile Phone

When you need to connect your speakerphone with another Bluetooth-enabled mobile phone, follow the steps below to disconnect the speakerphone with the pre-paired mobile phone.

- Power OFF the speakerphone.
- Select "Disconnecting" on the Bluetooth device list of your mobile phone to remove the connection.

Note: For power saving purpose, the speakerphone will automatically power OFF within 2 minutes after losing the connection/link. The blue LED light will flash twice every 3 seconds when the speakerphone is not connected with your mobile phone.

11. Using the Speakerphone

- Answering a Call
When receiving a phone call, press the "MFB" button once to answer the call.
- Ending a Call
Press the "MFB" button once to end a call.
- Reject a Call
When you hear the ringing tone, press and hold the "MFB" button for 3 seconds to reject the call.
- Voice Dial
If your mobile phone has voice dialing enabled, in standby mode, press the "MFB" button once and say the voice tag after you hear a beep.
Note: Please make sure to record voice tag into the mobile phone before using voice dial function. Functionality varies depending on the mobile phone model. Please refer to your mobile phone user guide for details.
- Last Number Re-Dialing
In standby mode, press the "MFB" button twice for last number dialed.

4

- Adjusting the Volume
During a call, press the "V+" or "V-" buttons repeatedly until you reach the desired volume level.
- Transferring Calls
a: Speakerphone to Mobile Phone: During a call, press both "V+" and "V-" buttons simultaneously, and the call is routed to your mobile phone.
b: Mobile Phone to Speakerphone: Press both "V+" and "V-" buttons simultaneously to route the call back to the speakerphone.
- Mute & Un-Mute
a: Mute: During a call, short press the "MODE" button to mute the microphone. The red LED will flash on during mute mode.
b: Un-Mute: short press the "MODE" button during mute mode to un-mute the microphone.

12. MultiPoint Feature

- Activate MultiPoint Connection
The default setting of the speakerphone's multipoint function is OFF. You can activate the multipoint function for connecting with 2 mobile phones at the same time.
a. MultiPoint ON: Under standby mode, press and hold "V+" button for 3 seconds until you hear a beep.
b. MultiPoint OFF: Under standby mode, press and hold "V-" button for 3 seconds until you hear a beep. The speakerphone will turn off the multipoint function and power off automatically. When power on the speakerphone again, it will only connect to the last connected Bluetooth device.
- MultiPoint Pairing
a. First mobile phone: Pair the speakerphone with one of the Bluetooth-enabled mobile phones.
b. Second mobile phone: Power OFF the speakerphone. Press and hold the "MFB" button for 5 seconds to enter pairing mode again to pair and connect with the second mobile phone.
c. Connect with the first paired mobile phone to the speakerphone.
- MultiPoint Connection/Link with 2 Mobile Phones
After the multipoint function is activated, please follow the steps below to

5

- connect with 2 Bluetooth enabled mobile phones at the same time.
When power on the speakerphone, it will automatically search and connect the last 2 mobile phones that have been connected before.
- Answer the Second Call during a Call (3 way call or two link function)
When receiving a second call, press "MFB" button twice to hold the first call on line and answer the second call.
 - Reject the Second Call during a Call (3 way call or two link function)
When receiving a second call, press and hold the "MFB" button for 3 seconds to reject the second mobile phone call.
 - Switch between 2 Phone Calls (3 way call or two link function)
a. When having 2 calls on the line, press "MFB" button twice to switch between these 2 phone calls.
b. When having 2 calls on the line, short press the "MFB" button once to end the current call and stay with the other call.
- NOTES: When the multipoint feature using, the device can not support three-way calling feature.

13. Low Voltage Protection of Battery

When the voltage of the battery has decreased to 3.3V, the red LED light will flash every 3 seconds, and the speakerphone will power OFF automatically when the voltage is under 3.0V.

14. Restore to Default Setting

- Please follow the steps below to reset the speakerphone to its original settings and remove all the previous pairing and connections.
- Ensure the speakerphone is in standby mode.
 - Press and hold both "V+" and "V-" buttons simultaneously for 10 seconds until the blue and red LED lights flash 5 times, then the speakerphone will resume standby mode. The speakerphone is now back to its original settings, and after powering ON, the speakerphone will enter pairing mode automatically.
Note: If the speakerphone is connected with a mobile phone before restoring the default settings, it will enter pairing mode automatically after restored to default. If the speakerphone is not connected with the mobile phone before restoring the default settings, it will be in standby mode after restoring the default settings.

15. LED Light Indicators

Speakerphone Status	LED Indicator
Power OFF Mode	OFF
Power ON	Blue LED flash 3 seconds
Power OFF	OFF
Standby Mode	Blue LED flash once every 3 seconds
Standby (Disconnect Bluetooth Device)	Blue LED flash twice every 3 seconds
Standby-Low Voltage	Red LED flash once every 3 seconds
Talk in progress	Blue LED flash once every 6 seconds
Pairing in progress	The red and blue LED flash on alternatively
Charging in progress	Red LED steady on
Charging completed	OFF

16. Product Specification

Bluetooth Compliance: Bluetooth V2.1+EDR
Operating Frequency Band: 2.4GHz ~ 2.48GHz unlicensed ISM band
Output Power: Class 2, up to 10 meters
Support Profiles: HSP and HFP Profiles
Support Multiple Paired Devices: Memorize paired data of 8 Bluetooth phones
Auto-Power-On Feature
Stand-by Time: Up to 1000 hours / 41 days
Talk Time: Up to 5 hours
Battery Charging Time: About 2 hours, Using solar power about 9 hours
Charger Voltage: DC5.0V, 400mA
Battery: 3.7V 340mA (Rechargeable Li-ion Polymer)
Size: 100.5 x 49.2 x 13.4 mm
Weight: 49g (excluded windshield mount holder)

7

FCC INFORMATION

This device complies with Part 15 of the FCC Rules. Operation is subject to the following two conditions:

1. This device may not cause harmful interference, and 2. This device must accept any interference received, including interference that may cause undesired operation.

This equipment has been tested and found to comply with the limits for a Class B Digital Device, pursuant to Part 15 of the FCC Rules. These limits are designed to this equipment generates, uses, and can radiate radio frequency energy and, if not installed and used in accordance with the instructions, may cause harmful interference to radio communications. However, there is no guarantee that interference will not occur in a particular installation. If this equipment does cause harmful interference to radio or television reception, which can be determined by turning the radio or television off and on, the user is encouraged to try to correct interference by one or more of the following measures:

- Reorient or relocate the receiving antenna.
- Increase the separation between the equipment and receiver.
- Connect the equipment into an outlet on another circuit.
- Consult the dealer or an experienced radio/TV technician for help.

Caution: Any changes or modifications not expressly approved by the party responsible for compliance could void the user's authority to operate this equipment.