



WARNING: Do not place or store the speakerphone over the area of the automobiles safety airbag deployment, or it may cause serious injury when a safety airbag deploys.

#### 4. Charging Your Bluetooth Speakerphone

The Bluetooth speakerphone comes with a built-in rechargeable battery. Prior to using the speakerphone, it is recommended to charge the battery fully for the first time.

Using the car charger

- Insert the car charger completely into the charging slot until the red LED goes on.
- Normal full charge time is 2 hours. (approx.), and the red LED goes off when charge is completed.

Using solar power

- Direct the solar panel on the back side of the speakerphone toward sun. (Please refer to the recommended installation position, as mentioned above.)
- If the speakerphone receives sufficient sunlight for 2 hours, you can talk for duration of up to 1 hour. Using solar power charge, the operation time (the talk time and the standby time) will be extended continuously without any additional charge required by the car charger.

WARNING: Do not attempt to charge the speakerphone with any charger other than the one provided. Using another charger may damage or destroy the speakerphone.

#### 5. Turning On/Off the Speakerphone

- (1) To turn ON the Speakerphone  
Press and hold the "MFB" button for four seconds and the blue LED flashing 3 seconds light indicator comes on ("Power On" is announced).
- (2) To Turn OFF the Speakerphone  
Press and hold the "MFB" button until the red LED flashing 3 seconds light indication goes off ("Power Off" is announced).

#### 6. Pairing

Prior to using the speakerphone for the first time, you must pair it with a Bluetooth-enabled mobile phone. The steps below describe pairing instructions for a typical Bluetooth-enabled mobile phone.

2

instructions for a typical Bluetooth enabled mobile phone.

- (1) Place the speakerphone and mobile phone no more than 1 meter (3 feet) apart.
- (2) Ensure the speakerphone is turned off.
- (3) Press and hold the "MFB" button for 6 seconds until the LED flash red and blue alternatively, it is now ready for pairing. ("Pairing phone please put your phone in pairing mode and enter PIN code "0000" is announced).
- (4) Activate the Bluetooth function on your mobile phone and search for accessible Bluetooth device by referring to your mobile phone user guide for details.
- (5) Select "BT Speaker" from the list of searched devices.
- (6) Enter the pre-programmed code "0000" and press "OK" to pair the speakerphone and the phone.
- (7) When pairing is completed, the speakerphone is under the standby mode with the blue LED flashes in every 3 seconds. Please place the mobile phone and the speakerphone within 10 meters (32 feet) sensing distance. ("Pairing Successful" is announced).

NOTE:

1. If the pairing cannot be completed within 2 minutes after the pairing mode is activated, the speakerphone will power off automatically. Please repeat steps above to pair the speakerphone and mobile phone again.
2. When first time using the speakerphone and after restore to default settings, the speakerphone will automatically enter pairing mode after power on.

#### 7. Connection Link/Between Speakerphone And Mobile Phone

After pairing is completed, speakerphone is always under standby mode. Before you place or answer a call, if the headset icon is not shown on phone screen, please follow the steps below to activate the Bluetooth connection/link through your mobile phone or speakerphone until the headset icon is on the screen.

- On phone: Select the "BT Speaker" from the paired list on your mobile phone's Bluetooth menu.
- On speakerphone: Short press the "MFB" and select "Accept" on phone screen to accept connection.

NOTE:

1. Your speakerphone will be automatically switched off when it is disconnected from a paired device for more than 10 minutes. This special feature is incorporated to maximize your speakerphone's standby/talk time. To reinstate the connection, simply

repeat the process for turning speakerphone on.

2. If your speakerphone is set as an authorized Bluetooth device on your mobile phone, an automatic reconnection can be established by pressing the speakerphone's "MFB" button once.

#### 8. Using the Speakerphone (Most Ofunctions will be audibly announced)

- (1) Answering a Call  
When your mobile phone rings, press the "MFB" button on the Speakerphone to connect the call.
- (2) Making Calls from your mobile phone Dial directly from your mobile phone. The call is automatically connected to your Speakerphone.
- (3) Reject a Call  
Hold onto the "MFB" button for 3 seconds to reject an incoming call.
- (4) Ending Calls  
When you have finished your call, press the "MFB" button on the receiver to disconnect the call.
- (5) Making calls using voice dialing (Dependent on mobile phone support) Press the "MFB" button once and call out the name of the person for the call to be placed.
- (6) Redial Last Outgoing Call  
Press the "MFB" button twice and the call is connected.
- (7) Transferring Calls
  - a. Speakerphone to Mobile Phone: During a call, short press both "V+" and "V-" buttons, and the call is routed to your mobile phone.
  - b. Mobile Phone to Speakerphone: Short press the "MFB" button or both "V+" and "V-" buttons once to route the call to speakerphone.
- (8) Adjusting The Volume  
To increase the volume - Press the "V+" symbol volume button to increase volume by one level, repeat this procedure until you have reached the desired level. To decrease

4

the volume - Press "V-" symbol button to decrease the volume by one level, repeat this procedure until you have reached the desired level.

- (9) Answer/Reject the Second Call during a Call
  - a. Answer: When receiving a second call, short press the "MFB" button once to hold the first call on line and answer the second call.
  - b. Reject: When receiving a second call, press and hold the "MFB" button for 3 seconds to reject the second call.
- (10) Switch between 2 Phone Calls
  - a. When having 2 calls on the line, press and hold the "MFB" button for 3 seconds to switch between these 2 phone calls.
  - b. When having 2 calls on the line, short press the "MFB" button once to end the first call and stay with the second call.
- (11) Text-To-Speech Language Options  
The speakerphone is available in 5 language options. During the standby mode, press the "V+" button for 3 seconds until the blue LED flashes 3 times and the speakerphone announce "Select Language". Repeat this process to select the desired language in the following order of English, French, Italian, German and Spanish.
- (12) Transferring Mobile Phone's Phonebook to CarKit (\*Handset Dependent)
  1. In the connected status, press the "V-" button for 3 seconds until the blue LED flashes 3 times, and the Blue LED light indicator comes on. This process automatically extracts the mobile phone's phonebook memory.
  2. When the process is completed, the Carkit announces "Contacts Saved". The process may take a few minutes depending on the amount of contacts that is being stored in the mobile phone's memory.

NOTE:

1. If the phonebook transfer is failed, the speakerphone will announce "Loading phonebook failed". The phonebook function varies from different mobile phone models, and not every mobile phone supports this feature. Please check with your supplier whether your mobile phone model support this feature.
2. The phonebook data saved in the speakerphone will be erased automatically when it is paired with another mobile phone.
3. Before transferring Phone's Phonebook, When incoming call, you will hear "Call from (Number)", and if Contacts Saved OK, when incoming call, you will hear "Call from (Name)".

5

- (13) Removing Phonebook Entries

During standby mode, hold on to both "V+" and "V-" buttons for 3 seconds ("Phonebook Deleted" is announced) and the entire phonebook memory in the Speakerphone will be deleted.

- (14) Turning On/Off the Text-To-Speech Function

To toggle the TTS function On or Off, simply hold the "V+" for 6 seconds in standby mode ("Voice Prompt On" or "Voice Prompt Off" is announced to denote its current status).

#### 9. Low Voltage Protection of Battery

When the voltage of battery decreased to 3.3V, the red LED will flash in every 3 seconds, and the Speakerphone will be power off automatically when the voltage under 3.0V.

#### 10. Restore to Default Settings

To restore your speakerphone to its original settings, press and hold both "V+" and "V-" buttons for 10 seconds until the blue LED light indication flashes rapidly. Press and hold both "V+" and "V-" buttons for a further 3 seconds and the speakerphone will power off automatically. This process is completed when speakerphone announces "Set Factory Default Completed". When power on the speakerphone, it would be in the pairing mode automatically.

#### 12. Care and Maintenance

- (1) Do not expose the speakerphone to liquid, moisture or humidity, as it is not waterproof.
- (2) Do not use abrasive cleaning solvents to clean the speakerphone.
- (3) Do not expose the speakerphone to extreme temperatures.
- (4) Do not expose the speakerphone to contact with sharp objects as this will cause scratching and damage.
- (5) Do not attempt to disassemble the speakerphone, as it does not contain serviceable components.
- (6) If you do not use the speakerphone for long periods of time, be sure to store it in a dry place, free from extreme temperatures, humidity and dust.

#### 13. Safety Information

- (1) Check local laws regarding use of a mobile phone and speakerphone while driving. If you use the speakerphone while diving, ensure your attention and focus remains on

6

your responsibility of driving safety.

- (2) Never allow children to play with the speakerphone. Small parts may be a choking hazard.
- (3) Observe all signs that require an electrical device or RF radio product to be switched off in the designated areas. These could include hospitals, blasting areas, and potentially explosive atmospheres.
- (4) Turn off your speakerphone prior to boarding an aircraft. Do not use your speakerphone in an aircraft.
- (5) Never place or store the speakerphone over the area of the automobile's safety airbag deployment, or it may cause serious injury when a safety airbag deploys.

#### 14. Product Specifications

Bluetooth Compliance: Bluetooth 2.1+EDR specifications  
 Operating Frequency Band: 2.4GHz ~ 2.48GHz unlicensed ISM band  
 Output Power: Class 2 Power Output, up to 10 meters  
 Support Profiles: Headset and Handsfree 1.5 Profiles  
 TTS Support Language: English, French, Italian, German, Spanish  
 Integrated phonebook: Stores up to 1000 contacts  
 Voice to announce CallerID  
 Support Multiple paired Device: Up to 8 Bluetooth Phone can be paired  
 Stand-by Time: Up to 250 hour  
 Talk time: Up to 6 - 8 hours  
 Battery Charging Time: About 2.5 hours , using solar power about 9 hours  
 Charger Voltage: DC5.0V 400mA  
 Battery Type: 3.7V 340mA (Rechargeable Li-ion Polymer Battery)

NOTES: This speakerphone is in compliance with the specified Bluetooth version. It does not guarantee compatibility of all functions on every Bluetooth enabled device. Please check with your mobile phone's user manual for compatibility and functionality.

7

#### FCC Information:

This device complies with Part 15 of the FCC Rules. Operation is subject to the following two conditions:

1. This device may not cause harmful interference, and 2. This device must accept any interference received, including interference that may cause undesired operation.

This equipment has been tested and found to comply with the limits for a Class B Digital Device, pursuant to Part 15 of the FCC Rules. These limits are designed to this equipment generates, uses, and can radiate radio frequency energy and, if not installed and used in accordance with the instructions, may cause harmful interference to radio communications. However, there is no guarantee that interference will not occur in a particular installation.

If this equipment does cause harmful interference to radio or television reception, which can be determined by turning the radio or television off and on, the user is encouraged to try to correct interference by one or more of the following measures:

- Reorient or relocate the receiving antenna.
- Increase the separation between the equipment and receiver.
- Connect the equipment into an outlet on another circuit.
- Consult the dealer or an experienced radio/TV technician for help.

Caution: Any changes or modifications not expressly approved by the party responsible for compliance could void the user's authority to operate this equipment.

8

# "SOLAR-POWERED" Text To Speech SPEAKERPHONE

## User Manual

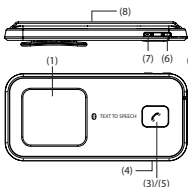
### 1. About Bluetooth Speakerphone

The Bluetooth TTS Speakerphone is compatible with most Bluetooth mobile phones. The Text-To-Speech system announces instructions for the users in 5 different languages and also indicates the status of the Bluetooth device. It also announces the name of the incoming caller (or phone number if the contact is not loaded into the Speakerphone's phonebook). Fully portable, it is an ideal wireless communication solution for in-car or office use within a maximum range of 10 meters. Built-in with Echo Cancellation and Noise Suppression, the Bluetooth Speakerphone provides you with impeccable sound quality in full duplex mode.

Make sure that your Speakerphone is fully charged before using it. Use only the charger provided - do not use chargers from any other devices as this might damage the device. A full charge is approximately 2.5 hours.

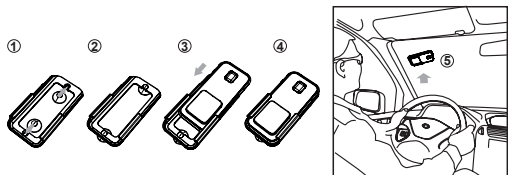
### 2. Appearance and Function

- (1) Speaker
- (2) Microphone
- (3) LED
- (4) Charging Socket (5-pin USB)
- (5) MFB Button (Multi-Function Button)
- (6) Volume Increase (V+)
- (7) Volume Decrease (V-)
- (8) Solar Panel



### 3. Recommend Installation Position

It is recommended that the speakerphone is positioned on to the top of the left side of the windshield as shown in the pictures below:



1

3