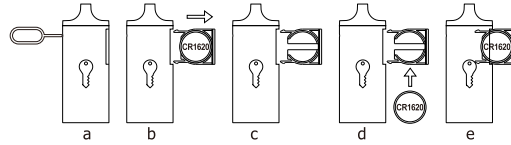




BKF-01 Bluetooth Key Fob

User Manual

4. Replace the battery



5. Package content



6. Reset to Re-Pair

Hold MFB for 4 seconds to reset to default setting. Reset Key Fob is open to any iDevice that installed Key Fob APP.

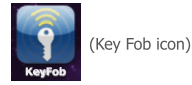
7. Pair with iDevice

- 1). Connect to Wi-Fi or 3G LTE network SearchKeyFob on Apple App Store.
- 2). Scan the QR code.

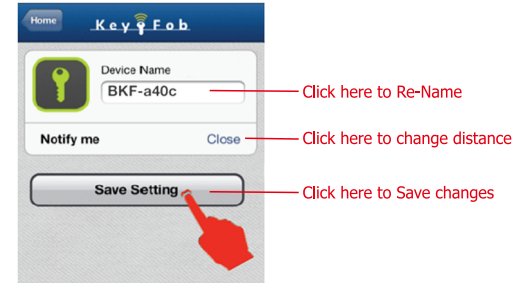


8. Key Fob APP QR Code

- 1). Download the APP, it will appear on the screen.



- 5). Name the Key Fob, and Set distance as far (as 10 meters) /Close (as 5 meters).

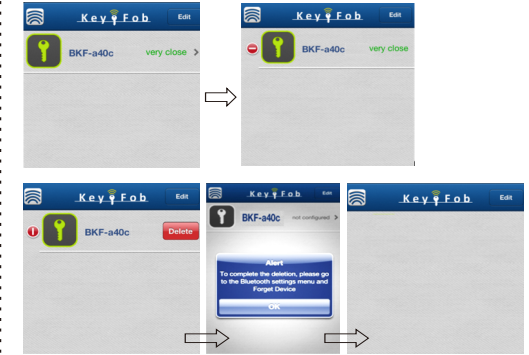


- 6). Then Save Setting and wait about 5 seconds for Pair notification to show up.



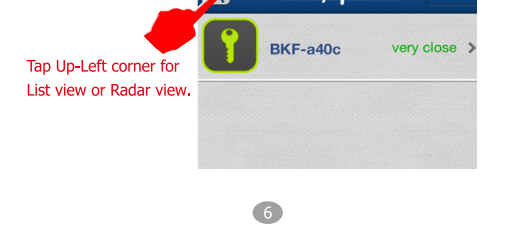
10. Delete Key Fob

Tap "Edit" or Slice finger from left to right, to remove.



11. Monitoring

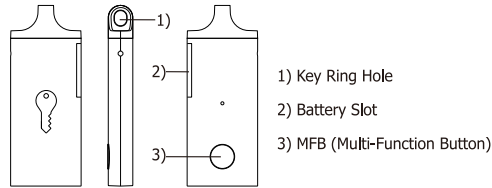
- 1). Enter Monitoring Page



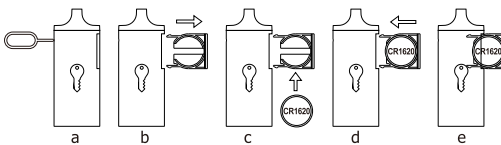
1. About Bluetooth Key Fob

Let's include Key Fob among our life, to enrich our daily smart living experience. Attach Key Fob to anything like Key Chain, Luggage, Wallet, Bike, or Pets. Helping us monitoring our valuable properties. Key Fob is compatible with any Bluetooth 4.0 enabled iOS devices; pair Key Fob with your iDevices, set distance alarm in the APP, which will remind us how far Key Fob is away from us. Simply press button on the APP or Key Fob to find each other, two-way finder makes finding stuff easier. Key Fob manages things in order.

2. Appearance and Function



3. Installing the Battery



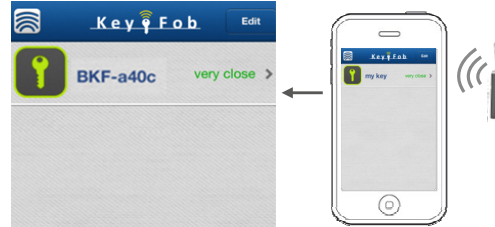
- 2). Click on Key Fob APP.



- 3). Tap MFB button, New Key Fob will show up in Search list.



- 7). For Example(KeyFob is named as "my key"), Put it next to mobiles, Key Fob appears.



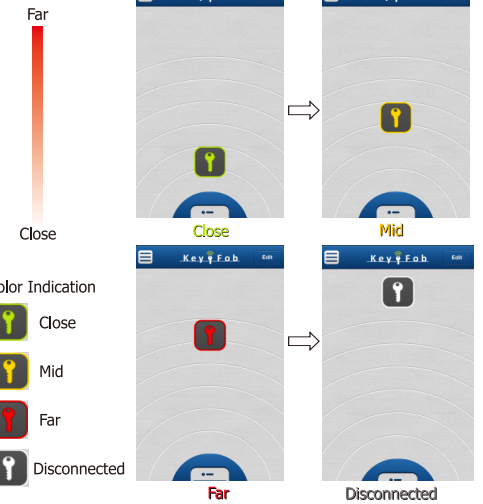
9. Advance Setting

Edit (Re-Name, Set Distance)

- 1.Select the Key Fob, which you want to edit. 2.Tap Edit



- 2). Radar view



※Note: To connect back to 1st paired iDevice while Key Fob is already paired with 2nd iDevice. Must delete Key Fob pair history on APP, and delete pair history iOS Bluetooth Setting on 1st paired iDevice and then Restart 1st iDevice that was paired. Then reset Key Fob by pressing MFB button for 6 seconds, to enter pair mode. Now, launch APP on 1st iDevice to search Key Fob.

Reason: iOS system automatically memorize Key Fob's Bluetooth pair info.