

**Power button**  
Short Press:  
Wake up the screen, lock the screen.  
Long Press:  
Long press for 2–3 seconds in power off mode switches on the device.  
Long press for 2–3 seconds in normal operation mode selects power off or reboot.  
Long press for 11 seconds when system is frozen automatically reboots.

**Volume buttons**  
Volume adjusts. These buttons can be set as quick scan button by app setting.

**Printer**  
For printing sales slips in power on mode.

**Return button**  
Tap to return to the previous screen.

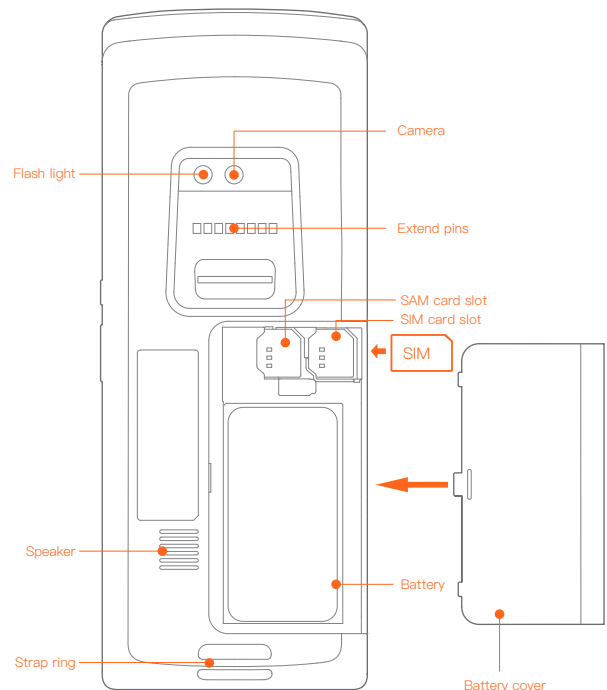
**Home button**  
Tap to quickly go back home screen.

**Menu button**  
Tap to quickly view the background apps.  
Select the app and slide laterally to close.

**Magnetic card reader**  
Read the magnetic stripe information of bank cards.

**IC card reader**  
Read the chip-based band cards.

**NFC reader**  
Read the contactless card information.



**Indicator light**  
Remind the payment steps for band card.

**USB interface**  
Use for charging or developer debugging.

**Camera**  
5M Auto Focus, 1D&2D scanner.

**Flash light**  
For lighting in camera mode.

**SAM card slot**  
For inserting encrypted SAM cards.

**SIM card slot**  
**Note:** To prevent system errors, please make sure the device is off when you insert or remove the SIM card.  

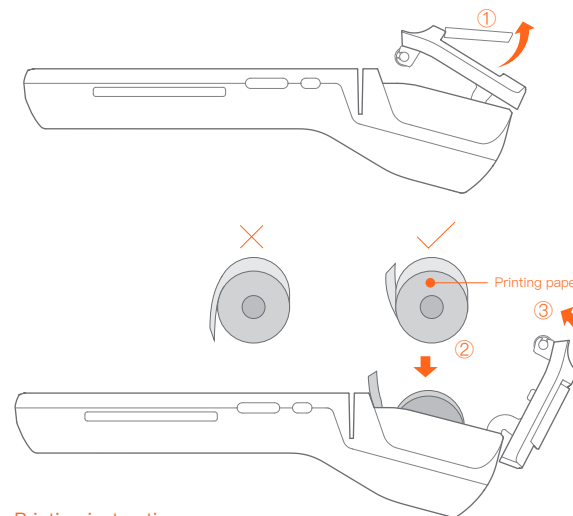
- Move the battery cover horizontally to open.
- Insert/remove SIM card in the direction as shown.
- Fasten the battery cover horizontally.

(Support GSM/CDMA/WCDMA/TDS CDMA/EVDO/LTE SIM card.)

**Battery**  
Avoid contacting with water, metal material and other electrically equipment while in use.

**Strap ring**  
For fixing handheld strap to prevent slippage.

**Extend pins**  
To connect to dock.(Need to buy dock separately)



**Printing instructions**  
This device support 58mm thermal paper with the specification of 57±0.5mm×Ø40mm  

- Please open pater container with open handle, as shown in Fig.1. Please don't open directly to damage print gear.
- Put the paper correctly into the pater container as shown and pull some paper outside the cutter, as shown in Fig.2.
- Close the cover of pater container to finish print paper feeding, as shown in Fig.3.

**Note:** If the printed paper is blank, please check whether the paper roll has been installed wrong.

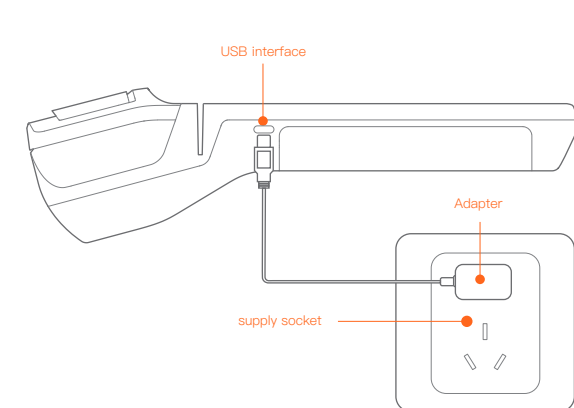
### Ultra-simple setting

Only a few steps to start the smart business device  

- 2G/3G/4G settings, in the power-off status, insert related 2G(GSM/CDMA)/3G(WCDMA/TDS CDMA/EVDO)/4G(LTE) SIM card and then power it on. (For card support details, please read the technical specification table)
- Long-press the power button for 2 to 3 seconds, and then the screen is lightened. Enter the first power-on interface and just operate according to instructions. The device provides two Internet accessing modes for selection.
- WiFi setting  
  - Click the [setting] button, then enable WLAN, enter the WLAN search interface, and wait for its search for accessible WLAN hotspots and the result;
  - Click on the WLAN you want to connect to. If you select an encrypted network, you need to enter the access code to connect.

**How to download/un-install applications**  
In the networked mode, open the application market, browse and download applications to complete the installation of related applications.

Software uninstall method: select "Settings-> Applications-> Manage Applications-> Uninstall" to uninstall the application; or long press the icon to drag it to the trash to uninstall.



**Instructions for charging and battery**  
This device supports charging by USB cable or dock.  

- Connect the 5V adapter to the power supply socket.
- Connect the USB cable to USB interface of the device.
- The screen will display charging icon during charging.
- Please check the USB connect if there is no charging icon.

**Instructions/Notes for battery**  

- This device adopts 3.6V/5200mAh Lithium battery, please don't remove the battery.
- In order to protect the battery life, please charge your device whenever possible and don't let battery to fully drain before charging.

### Trouble shooting

**Printer not working**  

- Make sure the cover of paper container is closed correctly.
- Make sure the right printing pater is used and fed.
- Check whether 58mm x 40mm thermal paper roll is fed into the paper container.
- If the printed paper is blank, please check whether the paper roll has been installed in the correct direction.

**The device can't be power on(eg, exhausted battery).**  

- Connect the device properly with a USB cable to charge for three minutes.
- Check whether the charging icon is displayed or not.

**What we can do if the system freezes**  
Press the power button for 11 seconds to reboot.

**Please read "Help App" in the device for more information on user's guidance**

## Name and Content of Toxic or Harmful Substances in this Product

| Toxic or Harmful Substances or Elements | Part Name                   |
|---|-----------------------------|
|   | Components of circuit board |
| Lead (Pb)                               | ×                           |
| Mercury (Hg)                            | ○                           |
| Cadmium (Cd)                            | ○                           |
| Hexavalent chromium (Cr(VI))            | ○                           |
| Polybrominated biphenyls (PBB)          | ○                           |
| Polybrominated diphenyl ethers (PBDE)   | ○                           |

○:Means that the content of the toxic or harmful substance in all homogeneous materials of this part is below the limit stipulated in SJ/T11363–2006.  
 ×:Means that the content of the toxic or harmful substance in at least one of the homogeneous materials of this part is beyond the limit stipulated in SJ/T11363–2006; but as for the component marked with "x" on the table, the content is beyond the limit since there is no alternative mature technology in the industry yet.

The products reaching or exceeding the environmental service life shall be recycled per "Regulations on the Control and Management of Electronic Information Products" and shall not be littered.

## Precautions

### Safety Warning

- Insert the AC plug into the AC socket–outlet corresponding to the identification input on the accessory power adapter;
- It must not be used where there is any potential explosive gas;
- This is a Class A product. In a living environment, this product may cause radio interference.

In this case, the user may need to take practical measures against the interference.

- About battery replacement:

- ① There is a risk of explosion if you replace the battery with a wrong type!
- ② The replaced battery shall be handed over to repair personnel disposal. Do not throw it into the fire!

### Important Safety Instructions

- Try not to install or use the device during lightning, or else there would be lightning stroke danger;
- When you find unusual smell, overheat or smoke, please cut off the power immediately;
- Be cautious of the sharp paper knife, and please do not touch! !

### Suggestions

- Do not use it in extremely cold or hot conditions (e.g., near fire or a lighted cigarette);
- Do not drop, throw or bend it;
- Try to use it in a clean and dustless environment and avoid tiny articles falling into the terminal;
- Do not use it near medical equipment without permission.

### Declaration

The company shall not be responsible for the following actions

- Any damage caused by not using and maintaining it under the conditions described in the guide;
- Any damage or problem caused by optional parts or consumptive materials (not the original products provided by the company or approved products), the company will assume no responsibility for this. It is not allowed to modify or change the product without the consent of the company.
- The operating system of this product supports official system update. If users install ROM system from the third party or modify the system files by means of cracking, it may lead to system instability, as well as security risk and security threat.

### Disclaimer

Owing to the update of the product, some details of this document may not be in conformity with those of the product. Please refer to the material object. The company reserves the right to interpret this document. The company reserves the right to modify this instruction book without prior notice.

## Product technical specifications

| Item                    | Technical Specifications  |
|-------------------------|---|
| Operating system        | Android 6.0   |
| CPU                     | MTK 6737  |
| CPU basic frequency     | Quad–core 1.3GHz  |
| RAM                     | 1GB LPDDR3  |
| FLASH                   | 8GB Nand Flash  |
| Display                 | 5.5 inch IPS, resolution 1280*720   |
| Touch screen            | Capacitive multi–touch screen, supportive of the glove mode                     |
| Camera                  | 500W AF   |
| Wireless data           | 2G: B2/B3/B5/B8<br>3G: wcdma(B1/B2/B4/B5);EVDO(BC0/BC1)<br>4G: B2/B4/B7/B17/B28 |
| Wi–Fi                   | Build–in WIFI 802.11 a/b/g/n (2.4G/5G)  |
| Bluetooth               | Support of bluetooth 3.0/4.0BLE and iBeacon                                     |
| Keys                    | Power key, volume key,  |
| Interfaces              | USB Type C, SIM, PSAM, USB OTG  |
| Printer type            | Thermal Printer   |
| Printer paper spec      | Width 58mm, maximum diameter 40mm   |
| Magnetic card reader    | Track 1/2/3, Bi–directional, ISO7810/7811/7813                                  |
| IC card reader          | ISO7816\EMV2000\PBOC3.0   |
| SAM Slot                | ISO7816   |
| Contactless card reader | ISO 1443A/B   |
| Battery                 | 3.6V/5200mAh  |
| Outline dimensions      | L211 mm × W83 mm × H54 mm   |
| Adapter                 | OUTPUT: DC5V/2A<br>INPUT: AC100–240V/0.3A 50/60Hz                               |

## Package content

- One host
- One user guide (including package content, product warranty card and product qualification certificate)
- One power adapter
- One USB cable
- \_\_\_\_\_

This device complies with Part 15 of the FCC Rules. Operation is subject to the following two conditions:

(1) This device may not cause harmful interference.

(2) This device must accept any interference received, including

interference that may cause undesired operation.

FCC ID: 2AH25W6900

NOTE: Changes or modifications not expressly approved by the party responsible for compliance could void the user’s authority to operate the equipment.

NOTE: This equipment has been tested and found to comply with the limits for a Class B digital device, pursuant to Part 15 of the FCC Rules. These limits are designed to provide reasonable protection against harmful interference in a residential installation. This equipment generates uses and can radiate radio frequency energy and, if not installed and used in accordance with the instructions, may cause harmful interference to radio communications. However, there is no guarantee that interference will not occur in a particular installation.

If this equipment does cause harmful interference to radio or television reception, which can be determined by turning the equipment off and on, the user is encouraged to try to correct the interference by one or more of the following measures:

---Reorient or relocate the receiving antenna.

---Increase the separation between the equipment and receiver.

---Connect the equipment into an outlet on a circuit different from that to which the receiver is connected.

---Consult the dealer or an experienced radio/TV technician for help.

Body–worn Operation

This device was tested for typical body–worn operations. To comply With RF exposure requirements, a minimum separation distance of 1.0cm must be maintained between the user’s body and the handset, including the antenna.

Third–party belt–clips, holsters, and similar including the antenna. Third–party belt–clips, holsters, and similar accessories used by this device should not contain any metallic components. Body–worn accessories that do not meet these requirements may not comply with RF exposure requirements and should be

avoided.

### Specific Absorption Rate (SAR) information:

This wireless phone meets the government’s requirements for exposure to radio waves. The guidelines are based on standards that were developed by independent scientific organizations through periodic and thorough evaluation of scientific studies. The standards include a substantial safety margin designed to assure the safety of all persons regardless of age or health.

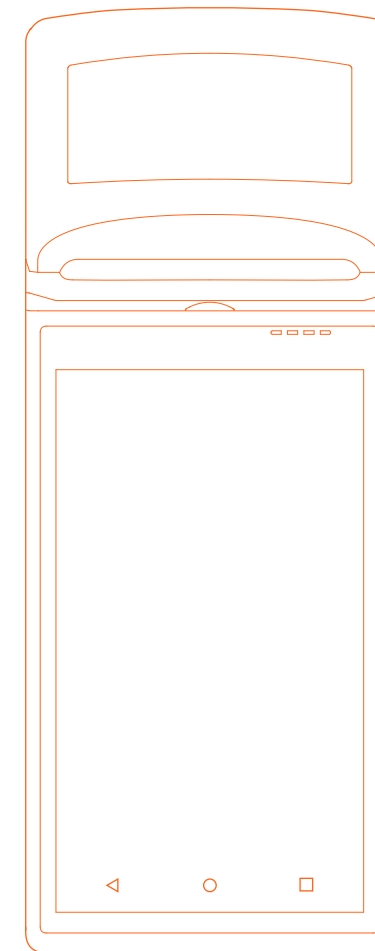
FCC RF Exposure Information and Statement. The SAR limit of USA (FCC) is 1.6W/kg averaged over one gram of tissue.

Device types: W6900 has also been tested against this SAR limit. The highest SAR value reported under this standard during product certification when properly worn on the body is 1.856W/kg (10gSAR, test distance: 0mm, limit 4W/kg) and 1.477W/kg (1gSAR, test distance : 5mm, limit 1.6W/kg). This device was tested for body–worn operations with the back of the handset kept 0mm and 5mm from the body. To maintain compliance with FCC RF exposure requirements, use accessories that maintain a 0mm and 5mm separation distance between the user’s body and the back of the handset. The use of belt clips, holsters and similar accessories should not contain metallic components in its assembly. The use of accessories that do not satisfy these requirements may not comply with FCC RF exposure requirements, and should be avoided.

## Technical features and characteristic

the product includes the following features and characteristics:

|              | Operation Frequency                | Transmitted |
|--------------|------------------------------------|-------------|
| GSM850       | 824MHz–849MHz                      | 33dBm       |
| GSM1900      | 1850MHz–1910MHz                    | 29dBm       |
| WCDMA bandII | 1850MHz–1910MHz                    | 21.5dBm     |
| WCDMA bandIV | 1710MHz–1755MHz                    | 22.5dBm     |
| WCDMA bandV  | 824MHz–849MHz                      | 22.5dBm     |
| LTE Band 2   | 1850MHz–1910MHz                    | 23.5dBm     |
| LTE Band 4   | 1710MHz–1755MHz                    | 23.5dBm     |
| LTE Band 7   | 2500MHz–2570MHz                    | 21.5dBm     |
| LTE Band 17  | 704MHz–716MHz                      | 23.5dBm     |
| CDMA BC0     | 824MHz–849MHz                      | 22dBm       |
| CDMA BC1     | 1850MHz–1910MHz                    | 21.5dBm     |
| BT           | 2402MHz–2480MHz                    | 6dBm        |
| BLE          | 2402MHz–2480MHz                    | –1dBm       |
| wifi         | 2412MHz–2462MHz                    | 18dBm       |
|              | 5150MHz–5250MHz                    | 18.5dBm     |
|              | 5250MHz–5350MHz<br>5725MHz–5850MHz |             |



## Smart POS System User’s Guide

### Manufacture

Room 505 No.388 Song Hu Road Shanghai, China