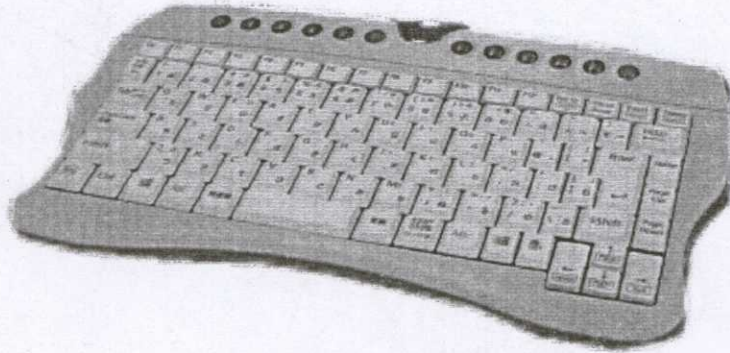


Keyboard with Trackball serious KBI-216



Features:

- Multi-channel design for HOME and OA use
- WWW, e-mail, Programmable application keys, Multimedia. With hot key One touch to play VCD, internet, shutdownetc.
- Built-in/ External receiver solution for option
- Full-size layout

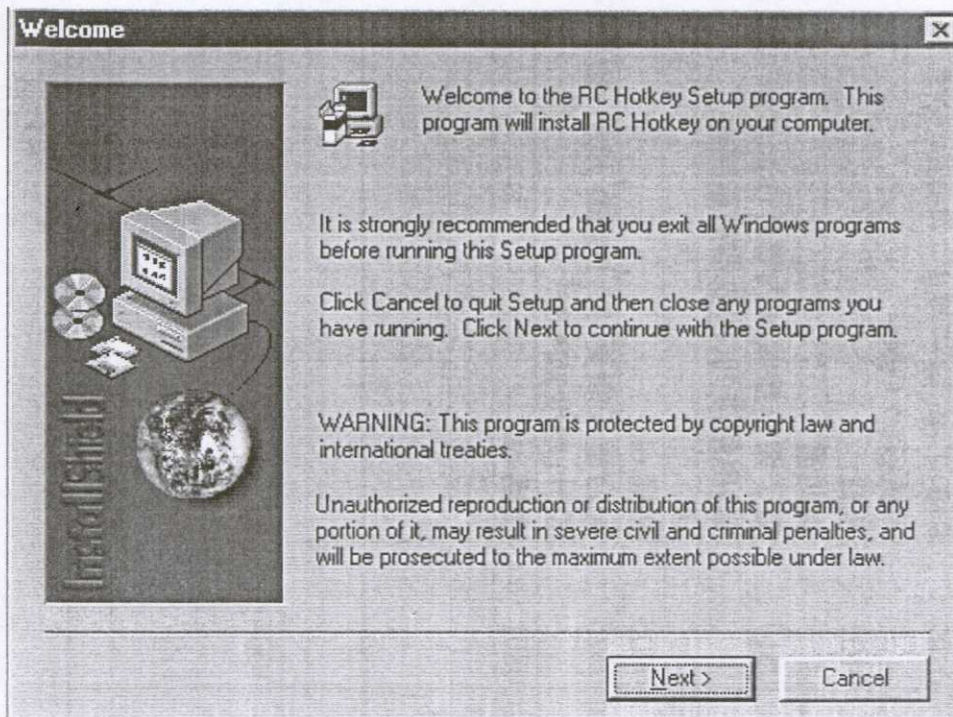
Frequency	27MHz(FSK)
Operation	2m
Channels	1 Channels and 1 ID.
Battery Life	More than 4 Months (based on normal operation 8 hours a day)
Hotkeys/Driver	Customized by IBM, Without Driver for Windows 98,2000, ME, XP
Channel Change	Software

User Manual

1. Set up battery
 1. Open the battery lid.
 2. Put the battery into the cavity (suggest to use alkaline battery). Put the battery direction correctly according to the illustration showed in the cavity.
3. Close the lid.
2. Plug in receiver
 1. If the port is PS/2, turn off the P.C power, plug receiver into P.C PS/2 port. Then open the P.C.
 2. If the port is USB (Window 98 /or new version, Mactintosh OS 8.6/ or new version), plug the receiver into the P.C's USB port. When installing, system will ask you to put CDROM. Pls put CDROM into P.C and set up according the illustration.
3. Set up the communication between keyboard and receiver.

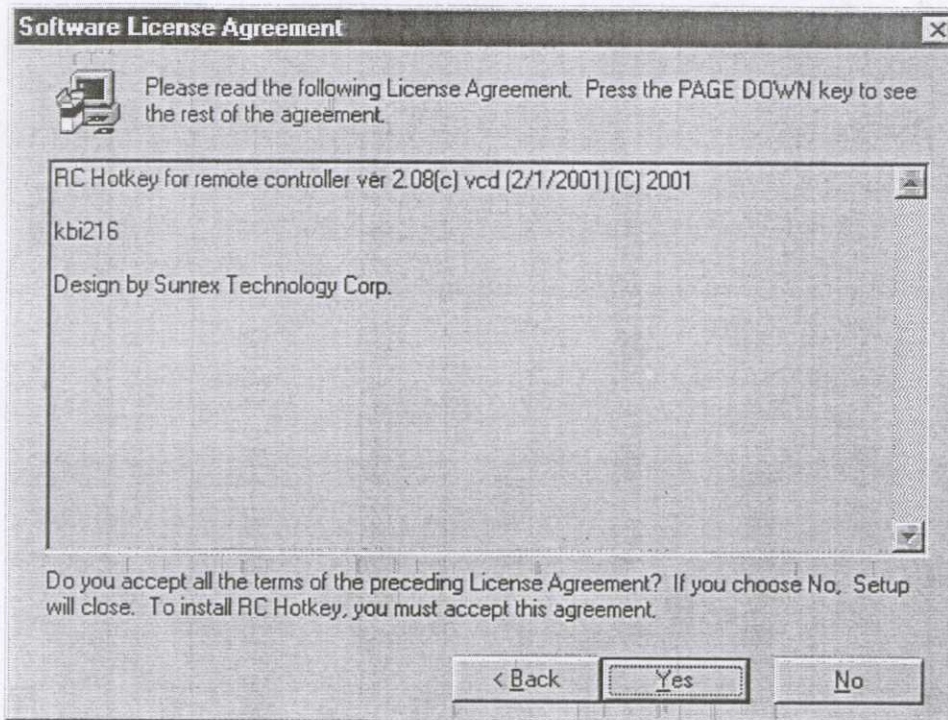
Press the link button on the receiver and then press "Fn+1" or "Fn+2" on the Keyboard.
4. When renewing battery, repeat the above steps.
5. Driver install
 - 1-1. Put the attached floppy into PC and install the driver. Click " Setup.exe", then the illustration 1 show up:

Illustration 1



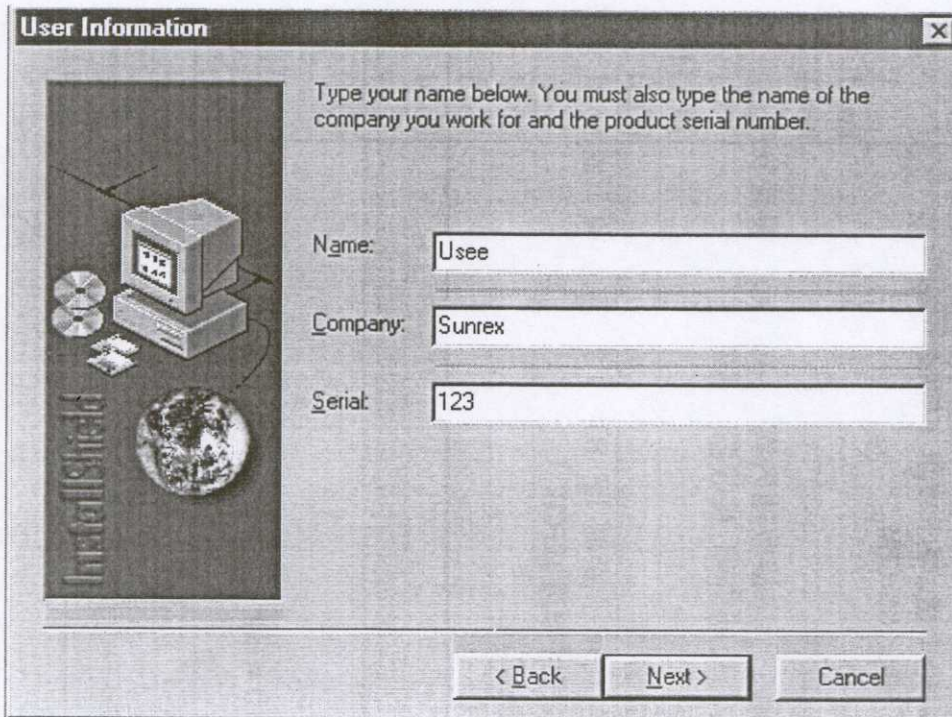
1-2 Click "Next", illustration 2 show up:

Illustration 2



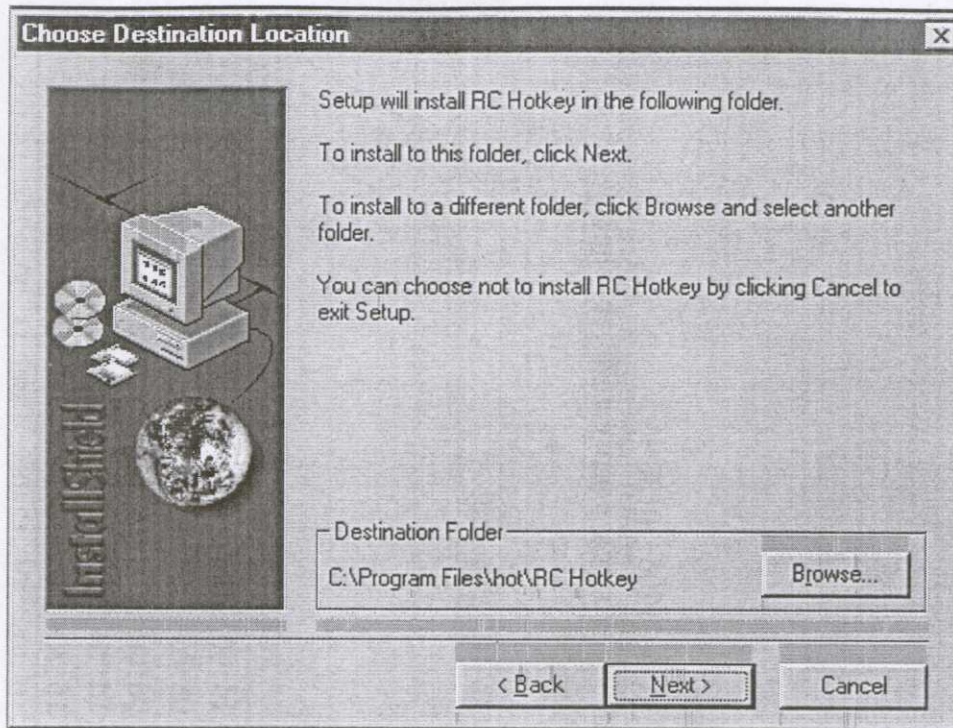
1-3 Click "Yes", Illustration 3 show up:

Illustration 3



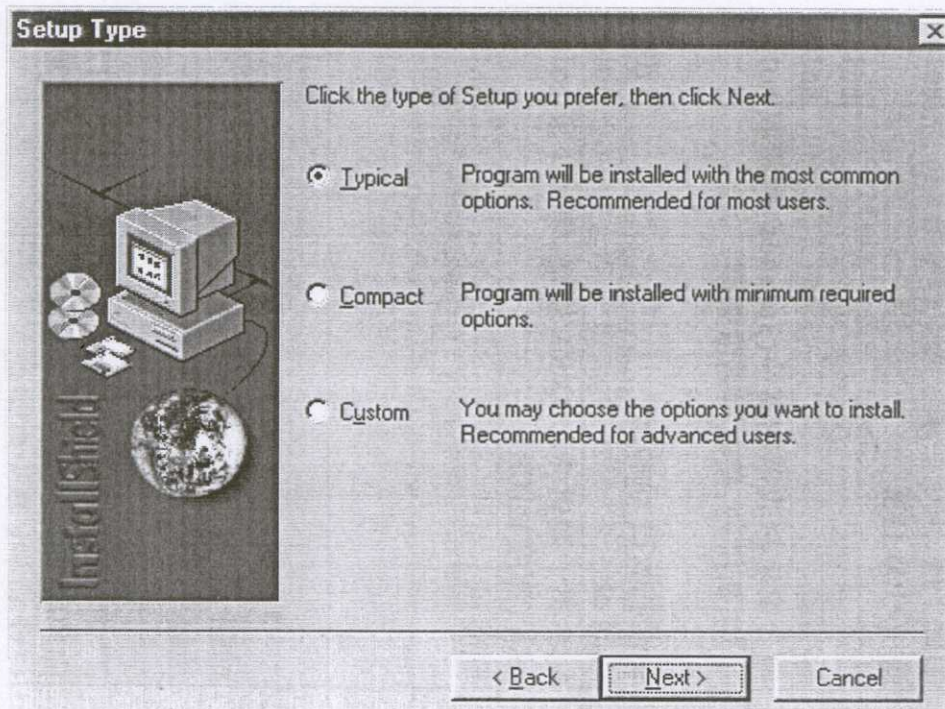
1-4 Key in user name and company, click "Next", Illustration 4 show up:

Illustration 4



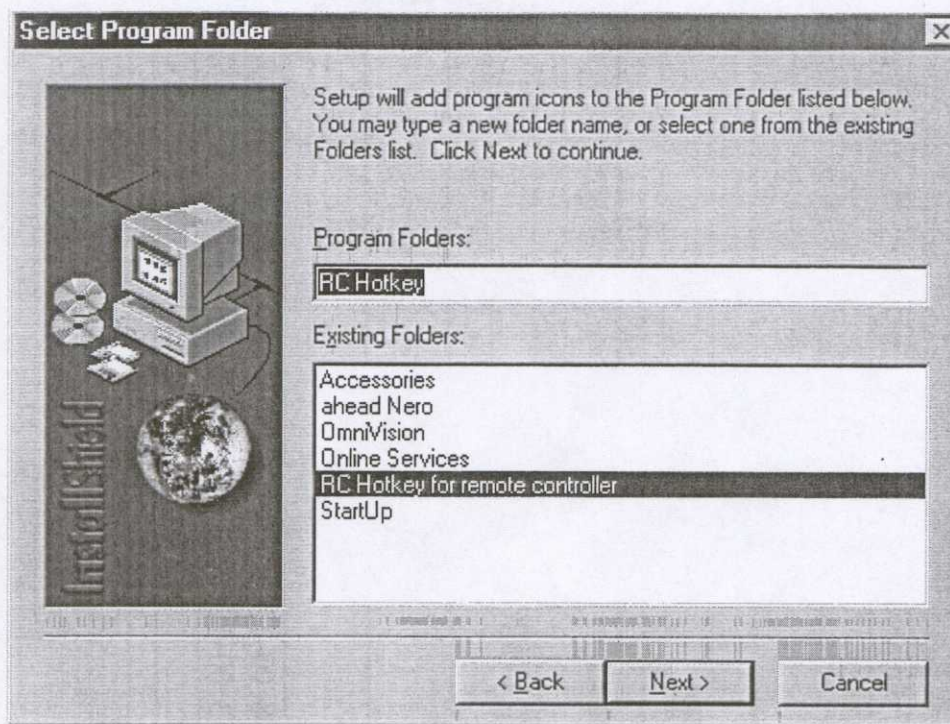
1-5 Click "Next", Illustration 5 show up:

Illustration 5



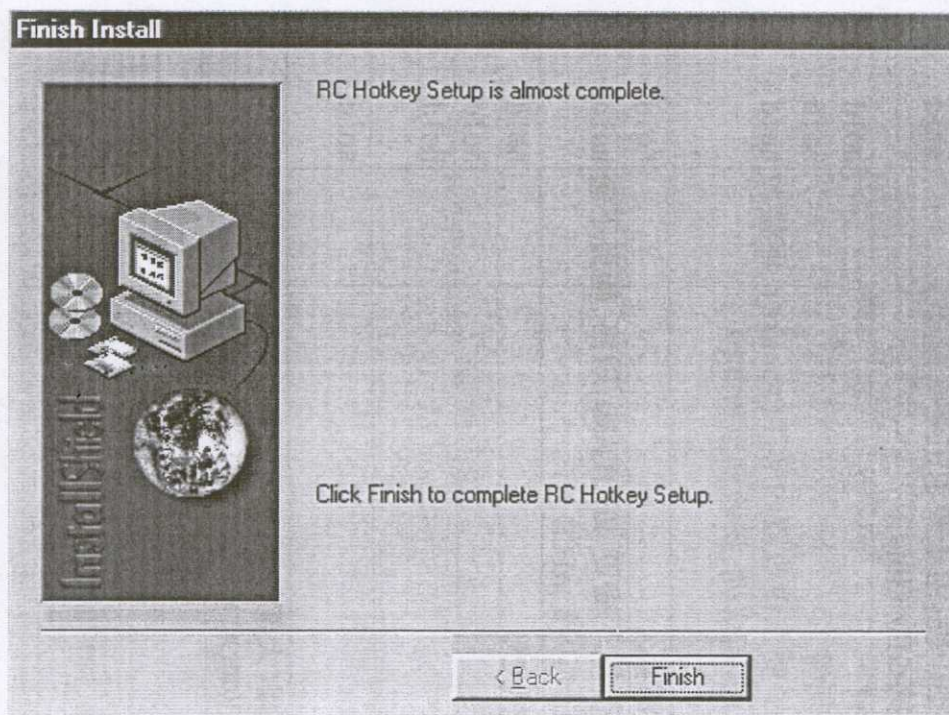
1-6 Click "Next", Illustration 6 show up:

Illustration 6



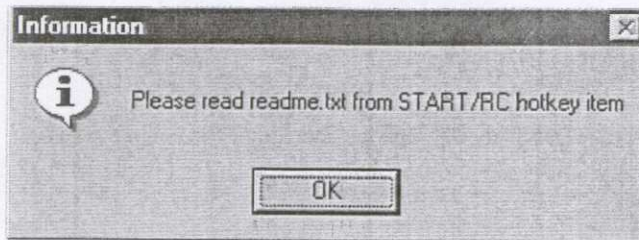
1-7. Click "Finish", Illustration 7 show up:

Illustration 7



1-8 Click "Finish", Illustration 8 show up:

Illustration 8



1-9 Click” OK”, then restart P.C, illustration 9 show up and finish installation:

Illustration 9



6. Problem Shooting

After installation, keyboard no work

1. Make sure receiver cable plug into correct port. Receiver port should plug into PS/2 or USB keyboard port and mouse port. For the best efficiency, keep the receiver 8 inch or 20 cm distance with other electrical device. Ex. Computer, or Monitor.. If operating on the metal surface, adjust the receiver toward the better communication direction.
2. Set up communication between receiver and keyboard. Press the button on the receiver and “Fn+1” or “Fn+2” on the keyboard.
3. Make sure the battery install correctly.
 1. Remove receiver from the P.C and replug.

Maintain the Keyboard

Trackball cleaning

If the product have trackball device, when the cursor skip or move abnormally, Clean the ball that is inside trackball.

1. Remove the retainer ring to remove the ball. On the bottom of the trackball, press in the direction of the Open arrow imprinted on the retainer ring cover.
2. Wipe the ball with a clean, lint-free cloth, then blow carefully into the ball-cage to dislodge dust and lint. Look for a build-up of dirt on the rubber roller(s) inside the ball-cage.
3. If dirty, clean the roller(s) using a cotton swab moistened lightly with isopropyl (rubbing) alcohol. After cleaning, make sure the roller(s) are still centered in their channels. Make sure that fluff from the swab is not left on the roller(s).
4. Replace the ball and retainer ring.

Troubleshooting

Wireless Keyboard no function

- Make sure receiver cable plug into correct port. Receiver port should plug into PS/2 or USB keyboard port and mouse port. For the best efficiency, keep the receiver 8 inch or 20 cm distance with other electrical device. Ex. Computer, Monitor..
- Make sure you set up the battery correctly. And make sure battery is full charged.
- Set up the communication between receiver, mouse. Trackball or keyboard. Press the button on the receiver, then press "Fn+1" or "Fn+2" on the keyboard to adjust the frequency. If you have SUNREX or JME wireless keyboard and setting instruction. Make sure you have press the "setting button" and "link button" on keyboard at the same time.
- If you are working on the metal surface, try to use mouse pad.
- Try to remove and link receiver and computer once again.

Troubleshooting for PC connection

- Make sure the receiver cable is plugged into the right port USB or PS/2. Don't remove or plug the cable when PC running.
- Make sure your USB or PS/2 port has the proper configuration. Refer to your computer documentation for the correct port configuration.
- Try to remove and re-plug receiver cable into PC.

Cursor don't move smoothly

- Clean the ball and the ball cage if your mouse have this device.
- For the wireless device, try to change the receiver position. It may be caused by the long distance between receiver and trackball or mouse. Also may caused by PC monitor(or big metal barrier) that will interference the receiver. It also may be caused by low power battery. Check the battery according to steps mentioned before. You also can re-set the link between mouse/trackball and receiver. When you do that, press the button on the receiver and then press "Fn+1" or "Fn+2" in the keyboard.

WARNING!

Some experts believe that use of any keyboard may cause serious injury
To hands, wrists, arms, neck or back. If you feel pain, numbness, weakness
In these areas see a qualified health professional.

FEDERAL COMMUNICATIONS COMMISSION INTERFERENCE STATEMENT

This equipment has been tested and found to comply with the limits for a Class B digital device, pursuant to Part 15 of the FCC Rules. These limits are designed to provide reasonable protection against harmful interference in a residential installation. This equipment generates, uses and can radiate radio frequency energy and, if not installed and used in accordance with the instructions, may cause harmful interference to radio communications. However, there is no guarantee that interference will not occur in a particular installation. If this equipment does cause harmful interference to radio or television reception, which can be determined by turning the equipment off and on, the user is encouraged to try to correct the interference by one or more of the following measures:

- Reorient or relocate the receiving antenna.
- Increase the separation between the equipment and receiver.
- Connect the equipment into an outlet on a circuit different from that to which the receiver is connected.
- Consult the dealer or an experienced radio/TV technician for help.

CAUTION:

Any changes or modifications not expressly approved by the grantee of this device could void the user's authority to operate the equipment.