

# Android Retail Tablets

10.1"LCD Screen

Tablet  
YC-112P



## User Manual

## Contents

Notes of Importance .....	2
Features.....	3
Package Contents. ....	4
POE Connect.....	5
Android OS Home Screen. ....	6
Install APP.....	7
Uninstall APP. ....	8
Factory Reset.....	9
Specifications.....	10

## Notes of Importance

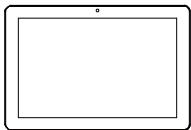
- 1)The equipment is for indoor use only.
- 2)To reduce the risk of fires or electric shock, do not expose the equipment to rain or moisture.
- 3)Do not block the ventilation holes on the back of equipment at any time.
- 4)Do not subject the equipment to severe shocking
- 5)Prevent any foreign matter falling into the external slot.
- 6)Do not open the case of the equipment. There is a risk of electric shock,and there are no user serviceable parts inside. Opening the case will void your warranty.

## Features

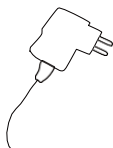
- ◆ 10.1" Screen,800\*1280
- ◆ Quad-core ARM cortex- A17 up to 1.8GHz
- ◆ Android 6.0 O/S
- ◆ Capacitive touch screen
- ◆ Wifi 802.11b/g/n
- ◆ Camera
- ◆ Bluetooth
- ◆ POE
- ◆ Dual-frequency RFID
- ◆ 1x USB 2.0 host
- ◆ 2\*2W Speaker
- ◆ OTG x1 USB
- ◆ Microphones
- ◆ 2 headphones

## Package Contents

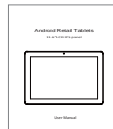
Please make sure all of the following are present when you unpack your Android Tablets.



Android Retail Tablets



Power adapter



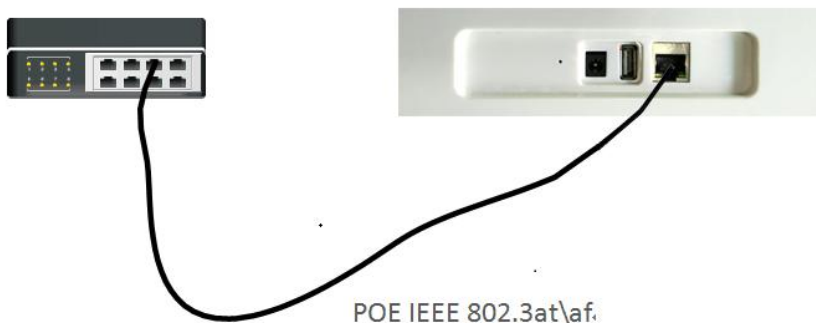
User manual

## POE connect

POE Router



Android Retail Tablets




Please make sure the POE Router support IEEE 802.at\af standar

## Android OS Home Screen

Insert the power lead into the DC socket, and then insert the other end into the power socket.


- 2) The equipment will automatically power on.
- 3) Screen will show the starting logo.
- 4) Wait for about 25 seconds and enter into main interface.

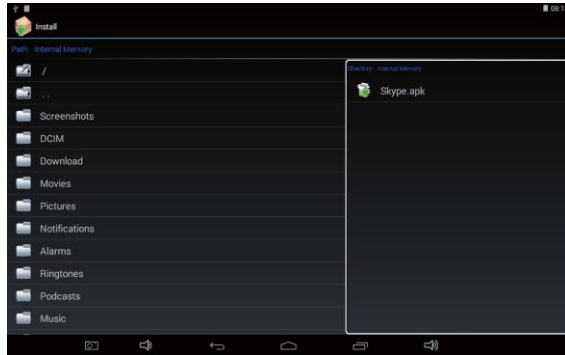


- 5) In the main interface, click  icon to go to APPS menu screen.
- 6) Click the apps icon to enter into apps click the "RETURN" icon, return to previous, page click the "HOME" icon return to the main interface.

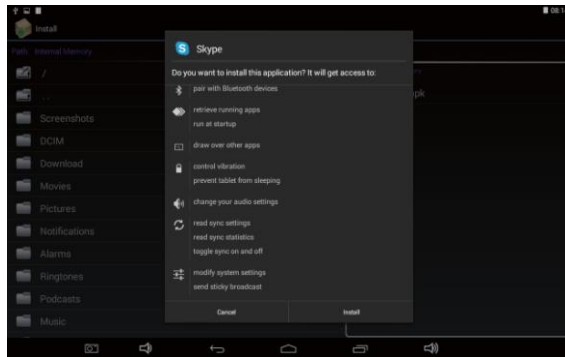


## Install APP

- 1) Copy the file of APK format to your device or SD card.
- 2) Click the  that in APPS, then you will enter into the 'APK Installer', select 'install', as the following picture:



- 3) Click the APK which you want to install, as the following pictures:



- 4) After installing the APK, you can click the APK icon in the apps to enjoy the application.

## Uninstall APP

- 1) Click the 'settings' in the APPS, enter into 'settings' 'APPS' 'DOWNLOADED', select which application would you want to uninstall, as the following picture:



- 2) Select and click the Uninstall button to uninstall this application, as the following picture:

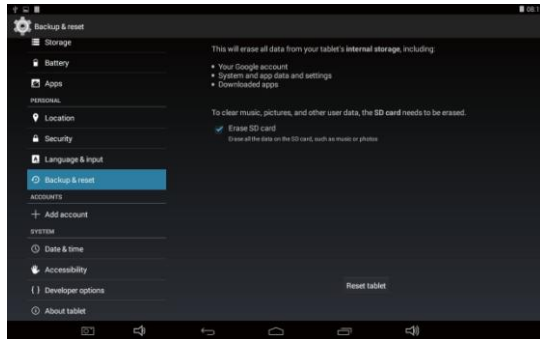




## Factory Reset

If your device has been contracted the virus, or worked unexpectedly by installing third-party applications, then you can erase all data from your device via reset tablet.

Operation: click 'Settings' 'Backup & reset' 'factory data reset', then click the 'reset tablet' and 'erase everything', as the following picture:



## Specifications

N0.	Item	SPEC
1	CPU	Quad-core ARM cortex-A53 up to 1.5GHz
2	O/S	Android 5.1.1
3	DRAM	2GB
4	Memory	eMMC, 8GB
5	LCD	10.1
6	LCD Resolution	10.1", 800*1280
7	Touch screen	Capacitive touch screen
8	WiFi	802.11b/g/n
9	Ethernet	100M/1000M Ethernet
10	Bluetooth	Bluetooth 4.0
11	Camera	2.0M/P
12	Video format	MPEG1;MPEG2;MPEG4;4K UHD, H. 265, H. 264, RV, VC-1, VP8
13	Audio format	MP2, MP3, AAC etc.
14	DC input	DC 12V/2A input
15	interfaces	USB hostx1; OTG;RJ45; earphone X2;DC;
16	VESA	75x75mm
17	POE	POE IEEE802.3at\af
18	Power consumption	20W(max)
19	The dimensions	10.1", 260x175x17mm/17kg
20	Working temperature	0℃~35℃
21	No Working temperature	-20℃~45℃
22	Relative humidity	5%~95%, no-condensing state
23	Working Height	3000M(max)

## Common Problems And Countermeasures

### 1.Can't open the machine

Solution: may batteries, connect the charger after 10 minutes to boot.

### 2.In the touch screen have no reaction when charging or automatically jump to the other interface

Solution: The connection is not the factory configuration chargers may cause bad touch, please use the factory configuration when charging.

### 3.After open the WIFI, not be able to connect to the router

Solution: May the WIFI password input error, please enter the password correctly.

### 4.Computer USB connection reaction

Solution:check whether the connecting line between the machine with a computer is connected, then click the machine upper left screen

### 5.In the abnormal operation after the crash, lag

Solution: Long press power key to 10 seconds to turn it off, and then restart is back to normal.

This device complies with part 15 of the FCC Rules. Operation is subject to the condition that this device does not cause harmful interference (1) this device may not cause harmful interference, and (2) this device must accept any interference received, including interference that may cause undesired operation. Any changes or modifications not expressly approved by the party responsible for compliance

could void the user's authority to operate the equipment.

NOTE: This equipment has been tested and found to comply with the limits for a Class B digital device, pursuant to Part 15 of the FCC Rules. These limits are designed to provide reasonable protection against harmful interference in a residential installation. This equipment generates, uses and can radiate radio frequency energy and, if not installed and used in accordance with the instructions, may cause harmful interference to radio communications. However, there is no guarantee that interference will not occur in a particular installation. If this equipment does cause harmful interference to radio or television reception,

which can be determined by turning the equipment off and on, the user is encouraged to try to correct the interference by one or more of the following measures:

- Reorient or relocate the receiving antenna.
- Increase the separation between the equipment and receiver.
- Connect the equipment into an outlet on a circuit different from that to which the receiver is connected.
- Consult the dealer or an experienced radio/TV technician for help.

To maintain compliance with FCC's RF Exposure guidelines, This equipment should be installed and operated with minimum distance between 20cm the radiator your body: Use only the supplied antenna.