

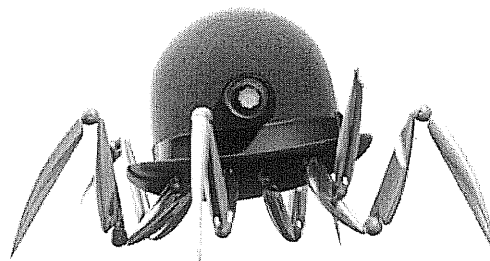
**SUPERTOYS**

## RADIO CONTROL

FOR AGES 5 AND UP

Requires 4-"AA" and  
1-"9 volt" batteries  
(not included)

# Doris



### CONTROLLER BATTERY INSTALLATION

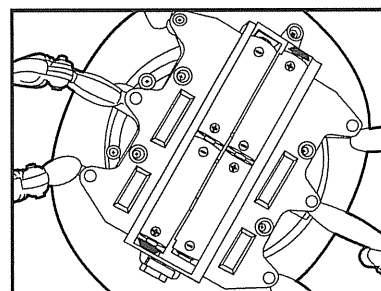
Use a Phillips head screw driver to remove the battery compartment cover located on the back of the controller. Insert 1 "9V." alkaline battery in the correct position as marked in compartment. Replace cover and screw.

### DORIS BATTERY INSTALLATION

Use a Phillips head screw driver to remove the battery compartment located on the back of the Doris. Insert batteries in the correct position as marked in compartment. Replace compartment cover. Move power switch to the "on" position to operate Doris. Move switch to the "off" position when not in use.

### TO DRIVE YOUR DORIS

- To drive forward, press button "A" + " B" .
- To drive in reverse, press button "C" + " D" .
- To turn right, press button "A" + " D" .
- To turn left, press button "B" + " C" .
- To turn the Doris head, press button "E" .

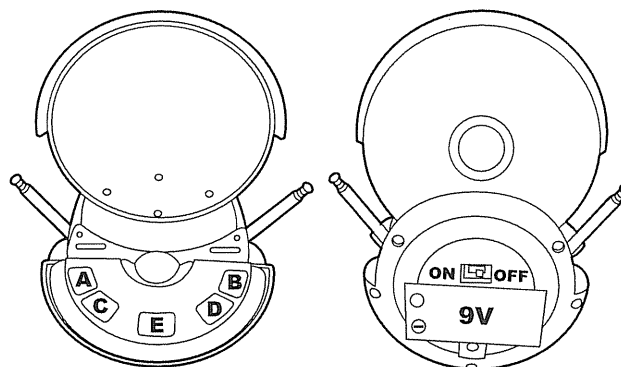


### Helpful hints for maintenance and performance:

1. Check batteries frequently.
2. Check battery terminals for contact.
3. Always turn switch both units off when not in use.
4. Run on smooth level surfaces.

### Maintenance Tips

- To enjoy your Drive My Doris for a long time:
- Keep the Doris dry. If it gets wet, wipe it dry immediately.
  - Use and store the Doris only in normal temperature environments.
  - Handle the product gently and carefully. Don't drop it.
  - Wipe the Doris with a damp cloth occasionally to keep it looking new.



**FCC Warning:** Changes or modifications to this unit not expressly approved by the party responsible for compliance could void the user's authority to operate the equipment.

**NOTE:** This equipment has been tested and found to comply with the limits for a Class B digital device, pursuant to Part 15 of the FCC Rules. These limits are designed to provide reasonable protection against harmful interference in a residential installation. This equipment generates, uses and can radiate radio frequency energy and, if not installed and used in accordance with the instructions, may cause harmful interference to radio communications.

However, there is no guarantee that interference will not occur in a particular installation. If this equipment does cause harmful interference to radio or television reception, which can be determined by turning the equipment off and on, the user is encouraged to try to correct the interference by one or more of the following measures:

- ☐ Reorient or relocate the receiving antenna.
- ☐ Increase the separation between the equipment and receiver.
- ☐ Connect the equipment into an outlet on a circuit different from that to which the receiver is connected.
- ☐ Consult the dealer or an experienced radio/TV technician for help.

This device complies with Part 15 of the FCC Rules. Operation is subject to the following two conditions:

- (1) This device may not cause harmful interference, and
- (2) This device must accept any interference received, including interference that may cause undesired operation.

### Responsible Party

ITEM/Art # 6809  
All Rights World-wide Reserved  
SUPERTOYS U.S.A. INC.  
2145 JACQUELINE AVE, BELLMORE, N.Y. 11710  
MADE IN CHINA