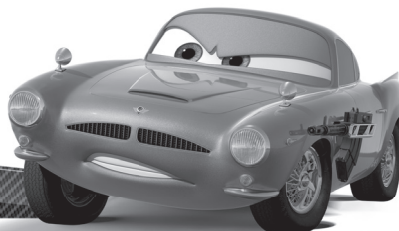




## Land to Sea Radio Controlled FINN MCMISSILE



4+



### WARNING:

CHOKING HAZARD - Small parts.  
Not for children under 3 years.



One "9 volt" and 6 "AA" batteries required (included).

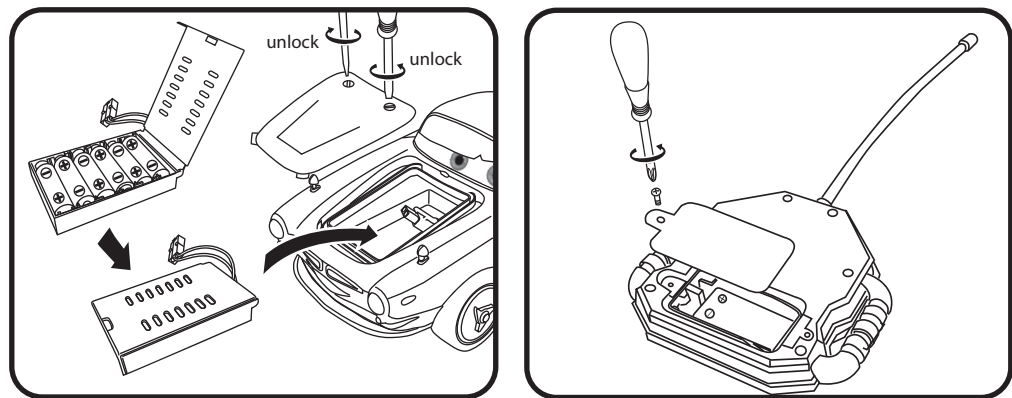
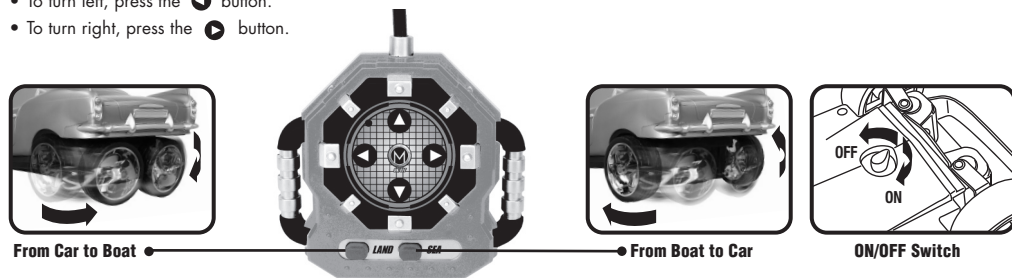
### DRIVING YOUR VEHICLE

1. Turn ON/OFF switch to ON, on Finn McMissile.
2. Slide ON/OFF on the transmitter to ON. The indicator on the transmitter lights.
3. Use the transmitter's arrow buttons to move and steer the Finn McMissile.
4. When the Finn McMissile goes outside the transmitter's control range, it stops. Hold the transmitter as high as possible with the antenna vertical to try to re-establish contact. If you cannot, you must move closer to the Finn McMissile to control it again, but be careful not to wade into deep water or strong currents.
5. When the batteries begin to lose power, the Finn McMissile slows down. So you don't lose your Finn McMissile, guide the Finn McMissile to shore as soon as you notice it slowing down.
6. When you finish driving the Finn McMissile, slide ON/OFF on the Finn McMissile and the transmitter to OFF.

### FINN MCMISSILE FUNCTION CONTROLS

Install AA's or fully charged rechargeable batteries into the Finn McMissile battery compartment and transmitter (9V) in the correct position as indicated. Move power switches located on the bottom of the Finn McMissile and the transmitter to the "ON" position. Place Finn McMissile on the water surface or on the ground.

- To drive forward, press the button.
- To drive in reverse, press the button.
- To turn left, press the button.
- To turn right, press the button.



### IMPORTANT OPERATING TIPS!

PLEASE MAKE SURE REAR WHEEL HUBS ARE REMOVED BEFORE DRIVING THE CAR INTO WATER.

Keep radio control range in mind while driving on a lake, pond or open water. Stand 15 to 20 feet away from water's edge to make certain you will be able to drive your Finn McMissile back to shore. Simply walk a few steps towards the Finn McMissile while maintaining a safe distance from shore. You will now be able to drive your Finn McMissile back for retrieval.

As an alternative power supply, you may use a 9.6V rechargeable battery pack instead of the AA batteries.

Always follow instructions from the battery pack and charger manufacturer when using Battery pack and charger.

### CAUTION:

Not recommended for children under three years of age.

May contain small parts which present a choking hazard for young children.

Remove all packaging before giving this toy to your child.

Non-rechargeable batteries are not to be recharged.

Rechargeable batteries are to be removed from the toy before being charged.

Rechargeable batteries are only to be charged under adult supervision.

Different types of new and used batteries are not to be mixed.

Only batteries of the same or equivalent type as recommended are to be used.

Batteries are to be inserted with the correct polarity.

Exhausted batteries are to be removed from the toy.

The supply terminals are not to be short-circuited.

Remove batteries when not in use or discharged.

Do not mix old and new batteries.

Do not mix alkaline, standard (carbon-zinc), or rechargeable (nickel-cadmium) batteries.

Alkaline batteries are recommended for best performance.

Please retain this information for future reference.

Batteries included are for demonstration purposes only.

This device complies with Part 15 of the FCC Rules.

Operation is subject to the following two conditions:

- (1) This device may not cause harmful interference, and
- (2) This device must accept any interference received, including interference that may cause undesired operation.

**Warning:** Changes or modifications to this unit not expressly approved by the party responsible for compliance could void the user's authority to operate the equipment.

**NOTE:** This equipment has been tested and found to comply with the limits for a Class B digital device, pursuant to Part 15 of the FCC Rules. These limits are designed to provide reasonable protection against harmful interference in a residential installation. This equipment generates, uses and can radiate radio frequency energy and, if not installed and used in accordance with the instructions, may cause harmful interference to radio communications.

However, there is no guarantee that interference will not occur in a particular installation. If this equipment does cause harmful interference to radio or television reception, which can be determined by turning the equipment off and on, the user is encouraged to try to correct the interference by one or more of the following measures:

- ☐ Reorient or relocate the receiving antenna.
- ☐ Increase the separation between the equipment and receiver.
- ☐ Connect the equipment into an outlet on a circuit different from that to which the receiver is connected.
- ☐ Consult the dealer or an experienced radio/TV technician for help.

Item/Art# 7280

All Rights World-Wide Reserved  
SUPERTOYS U.S.A., INC.

2145 JACQUELINE AVE, BELLMORE, N.Y. 11710

Tel: (516) 785 0846 Fax: (516) 781 6860

MADE IN CHINA

<http://www.supertoysusa.com>

E-mail: [help@supertoys.com.hk](mailto:help@supertoys.com.hk)

