

swann[®] evo

2K Indoor Wi-Fi Camera

Quick Start Guide

English

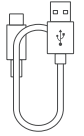
For other languages
scan



1 What's Included



Camera



USB-C Cable



USB Power Adapter



Reset Tool



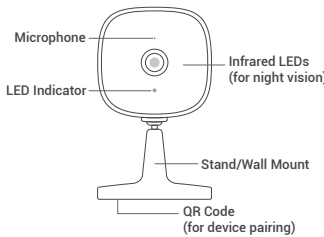
Drill Template



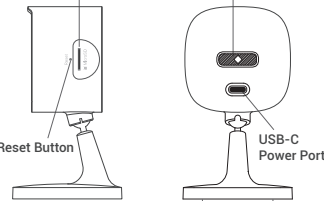
Screw Pack

* Images are for illustrative purposes only and may differ slightly from the actual product

2 Camera Overview

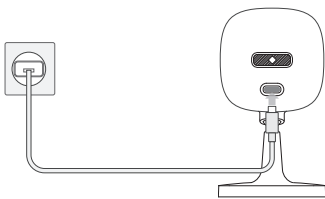


microSD Card Slot
(microSD card not included)



3 Power the Camera

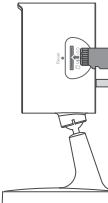
Connect the USB-C cable to the USB power adapter and the USB-C power port on the back of the camera, then plug the USB power adapter into a wall outlet.



4 Install a microSD card

A microSD card (not included) is necessary for the camera to record and store event clips locally.

Insert a microSD card (up to 128GB supported) into the microSD card slot, with the gold contacts facing the front of the camera.

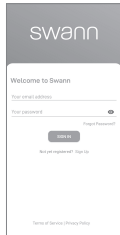


5 Get the App

a. Download the latest version of the Swann Security app from the Google Play™ Store or Apple App Store® on your Android or iOS mobile device. Simply search for 'Swann Security'. Or, you can scan the QR code below to get the app.

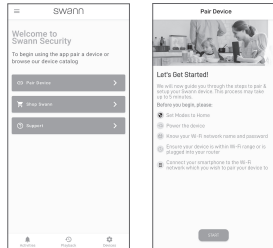


b. Open the Swann Security app and sign in, or tap "Not yet registered? Sign Up" to create your Swann Security account. Activate your Swann Security account by confirming the verification email sent to your registered email address.



5 Set Up the Camera

In the Swann Security app, tap the **Pair Device** button on the screen (or tap the menu icon in the top left and select **Pair Device**). The app will now guide you through the pairing process to set up the camera with your Wi-Fi network.



Please note that the camera is only compatible with the 2.4GHz network. If your router is using the 5GHz band, ensure that it is operating in mixed mode.

Initiating the camera's pairing mode

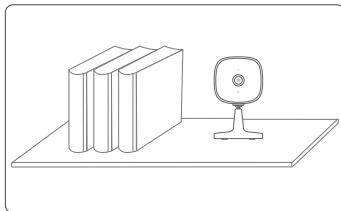
Use the Reset tool to press the **Reset** button on the side of the camera for 5 seconds until the camera LED blinks blue.

6 Camera Placement

The camera can be placed on a table or shelf, or easily mounted on the wall. With its flexible stand, you can freely swivel the camera and monitor your home from any angle you need.

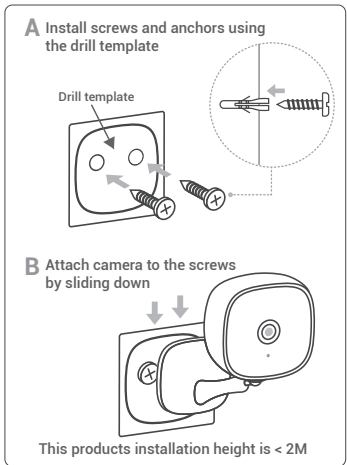
For optimal performance, ensure the camera location has strong Wi-Fi reception. You can check the Wi-Fi signal strength in the app. As a general rule, the nearer your camera is to your Wi-Fi router, the better the wireless connection quality.

Freestanding



Wall Mounting

The bottom of the camera stand has two keyhole slots that provide a convenient method for you to securely hang the camera on the wall.



Help & More

LED Status Guide

Slow Blinking Blue	Pairing mode
Solid Red	Live streaming / Motion recording
Fast Blinking Blue	Connecting to Wi-Fi
IR LEDs Blinking	Firmware update in progress

Motion Detection

Whenever motion is detected, the camera records the event to the local storage. Event clips can range from 10 seconds to 1 minute in length, depending on how long the motion activity lasts. You can adjust the motion detection sensitivity settings in the app. If you're receiving too many false alerts, try reducing the sensitivity. In addition, you can also customize the camera detection zone to reduce unnecessary detections.

Swann Security App Manual

To learn more about using the Swann Security app, you can download the manual from the **App Menu** > **User Manual**. The app manual provides detailed information on how to view live video, use 2-way talk, playback and download event clips, adjust camera settings such as motion detection, and more.



PSTI STATEMENT OF COMPLIANCE

Swann Communications declares that this product complies with the applicable security requirements in Schedule 2 of the Product Security and Telecommunications Infrastructure (Security Requirements for Relevant Connectable Products) Regulations 2023. The full text of the PSTI Statement of Compliance can be obtained at uk.swann.com/psti



SUPPORT.SWANN.COM

- FAQs & Help Articles
- Manuals, Guides & Videos
- Technical Support

QSGSE2KICVER1E

© 2024 Swann Communications

FCC Caution

This device complies with part 15 of the FCC Rules. Operation is subject to the following two conditions: (1) This device may not cause harmful interference, and (2) this device must accept any interference received, including interference that may cause undesired operation.

Any Changes or modifications not expressly approved by the party responsible for compliance could void the user's authority to operate the equipment.

Note: This equipment has been tested and found to comply with the limits for a Class B digital device, pursuant to part 15 of the FCC Rules. These limits are designed to provide reasonable protection against harmful interference in a residential installation. This equipment generates uses and can radiate radio frequency energy and, if not installed and used in accordance with the instructions, may cause harmful interference to radio communications. However, there is no guarantee that interference will not occur in a particular installation. If this equipment does cause harmful interference to radio or television reception, which can be determined by turning the equipment off and on, the user is encouraged to try to correct the interference by one or more of the following measures:

- Reorient or relocate the receiving antenna.
- Increase the separation between the equipment and receiver.
- Connect the equipment into an outlet on a circuit different from that to which the receiver is connected.
- Consult the dealer or an experienced radio/TV technician for help.

This equipment complies with FCC radiation exposure limits set forth for an uncontrolled environment. This equipment should be installed and operated with minimum distance 20cm between the radiator & your body.

IC Warning

This device complies with Industry Canada licence-exempt RSS standard(s).

Operation is subject to the following two conditions:

- (1) This device may not cause interference, and
- (2) This device must accept any interference, including interference that may cause undesired operation of the device.

Le présent appareil est conforme aux CNR d'Industrie Canada applicables aux appareils radio exempts de licence. L'exploitation est autorisée aux deux conditions suivantes:

- (1) l'appareil ne doit pas produire de brouillage, et
- (2) l'utilisateur de l'appareil doit accepter tout brouillage radioélectrique subi, même si le brouillage est susceptible d'en compromettre le fonctionnement

This equipment complies with IC radiation exposure limits set forth for an uncontrolled environment. This equipment should be installed and operated with minimum distance 20cm between the radiator & your body.