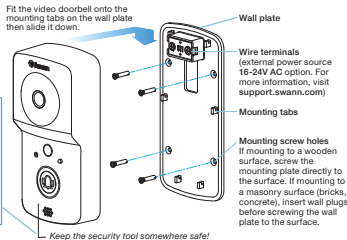


## Installation

The Smart Video Doorbell can be mounted on the wall using the provided wall plate as shown below. Before mounting, make sure to test if the desired installation location has good Wi-Fi reception. Using the app, stream live from the Smart Video Doorbell there. If it streams smoothly, you've found a good place for your device.

**Ideal installation height**  
Around chest-height,  
1.6m / 5.2ft from the  
ground.

Once attached to the wall plate, insert the provided security tool into the small hole at the bottom of the video doorbell and rotate clockwise to tighten the internal security screw (do not overtighten). To detach for charging, loosen the security screw by rotating anti-clockwise, then lift up the video doorbell.



## Help and Resources

### Answering a call

When a visitor presses the doorbell button, you'll get a notification on your smartphone along with an audible chime sound. Open the notification to launch the SwannBuzz app automatically and see who is at your doorstep. Tap the MIC icon to talk to your visitor. Tap the END button to end the call.

### Light Ring Status Guide

<b>Solid Blue</b>	USB Charging
<b>Solid Red</b>	Live streaming / Motion detection recording
<b>Three Blue Blinks</b>	Doorbell button press
<b>Slow Blinking Blue</b>	Wi-Fi Pairing mode

### Want more information?

Visit Swann Support Center at [support.swann.com](https://support.swann.com). You can register your product for dedicated customer support, download guides, find answers to commonly asked questions, and more.



Operating temperature: 14°F (-10°C) to 113°F (45°C)

#### FCC Statement

This equipment has been tested and found to comply with the limits for Class B digital device, pursuant to part 15 of the FCC Rules. These limits are designed to provide reasonable protection against harmful interference in a residential installation. This equipment generates, uses and can radiate radio frequency energy and, if not installed and used in accordance with the instructions, may cause harmful interference to radio communications. However, there is no guarantee that interference will not occur in a particular installation. If this equipment does cause harmful interference to radio or television reception, which can be determined by turning the equipment off and on, the user is encouraged to try to correct the interference by one or more of the following measures:

- Reorient or relocate the receiving antenna.
- Increase the separation between the equipment and the receiver.
- Connect the equipment into an outlet on a circuit different from that to which the receiver is connected.
- Consult the dealer or an experienced radio/TV technician for help.

This device complies with Part 15 of the FCC Rules. Operation is subject to the following two conditions:

- (1) This device may not cause harmful interference, and
- (2) This device must accept any interference received, including interference that may cause undesired operation.

**FCC RF Radiation Exposure Statement Caution:** To maintain compliance with the FCC's RF exposure guidelines, place the product at least 20cm from nearby persons.

**WARNING:** Modifications not approved by the party responsible for compliance could void user's authority to operate the equipment.

Wi-Fi frequency range: 2412-2462MHz, Maximum Wi-Fi RF power: 19.5dBm

#### EU Declaration of Conformity

Harmony Swann Communications, declares that this device is in compliance with the essential requirements and other relevant provisions of Directive 2014/53/EU. A copy of the Declaration of Conformity can be found at: [www.swann.com/declaration](https://www.swann.com/declaration)

#### IC Statement

This device complies with Industry Canada license-exempt RSS standards. Operation is subject to the following two conditions: (1) this device may not cause interference, and (2) this device must accept any interference, including interference that may cause undesired operation of the device.

The device is compliant with RF field strength limits, users can obtain Canadian information on RF exposure and compliance.

This Class B digital apparatus complies with Canadian ICES-003.

The equipment complies with IC radiation exposure limits and must be used for an uncontrolled environment. This equipment should be installed and operated with minimum distance 20cm between the radiator & your body.

**RECYCLING:** This product bears the selective sorting symbol for waste electrical and electronic equipment (WEEE) should not be disposed with other household wastes throughout the EU. This means that this product must be handled pursuant to European Directive 2012/19/EU in order to be recycled or destroyed to remove its impact on the environment.

**CAUTION: RISK OF EXPLOSION IF BATTERY IS REPLACED BY AN INCORRECT TYPE. DISPOSE OF USED BATTERIES ACCORDING TO THE INSTRUCTIONS.**

The symbol indicates DC voltage

The symbol indicates battery charge system. Note: This device requires a 96-Ft connection for operation

© Swann Communications 2018

05GWDP720VER1E

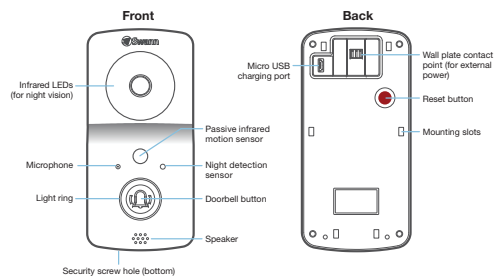


ENGLISH

## Smart Video Doorbell

### QUICK START GUIDE

## Get to Know the Smart Video Doorbell



## Charge the Smart Video Doorbell

Before using the Smart Video Doorbell for the first time, charge it for at least two hours with the included USB cable.

- 1 Plug the smaller end of the USB cable into the micro USB port on the back of the Smart Video Doorbell, and the larger end into a USB wall charger such as your smartphone charger (DC5V 2.1A power output recommended for faster charging).
- 2 The light ring on the front of the Smart Video Doorbell will turn solid blue while charging.
- 3 When the Smart Video Doorbell is fully charged, the light ring will turn off. A full charge can take up to four hours if charging from a low battery state.

## Get the App

- 1 Download and install the latest version of the SwannBuzz app from the Apple App Store® or Google Play™ Store on your iOS or Android smartphone. Simply search for "SwannBuzz".
- 2 After installation is complete, the SwannBuzz app icon will appear on your smartphone's Home or Apps screen. Tap the icon to launch the app.



**First time using the SwannBuzz app?**  
Tap **"Don't have an account? Sign Up"** and create your SwannBuzz account. This will allow you to view and manage your Smart Video Doorbell from any compatible smartphone.

**Already have a SwannBuzz account?**  
Enter your login credentials, then tap **"Sign In"**. After signing in, tap **"Set Up New Device"** and follow the prompts to set up a Wi-Fi connection on your Smart Video Doorbell. Before you begin setup, be close to your router or access point and have your Wi-Fi network information (including password) handy.

**Please note that the Smart Video Doorbell can only be connected to a 2.4GHz Wi-Fi network.**

Sign in with your SwannBuzz account

Email Address

Password

Forgot Password?

☐ Remember Me

Sign In

Don't have an account? [Sign Up](#)