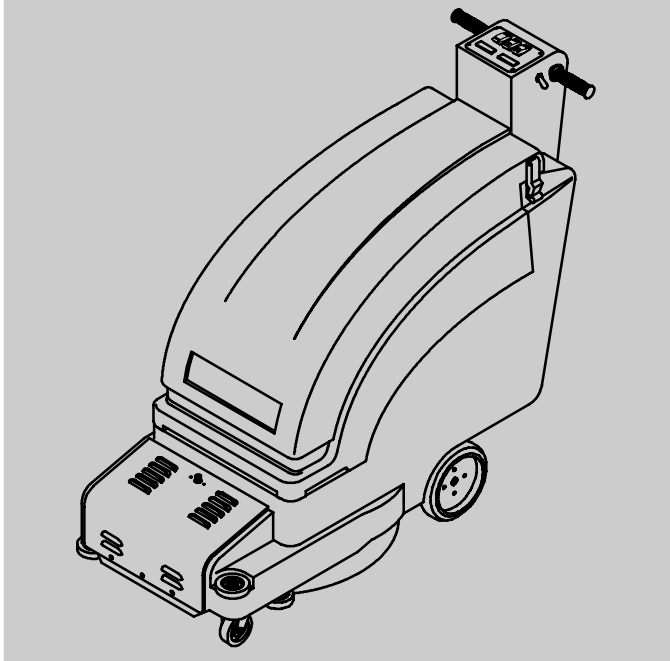




2510/2550

36 Volt Dust Control Burnisher

Parts Manual



Model Part No.:
9003531 - 2510
9003532 - 2510 Complete
9003535 - 2550
9003536 - 2550 Complete
609180 - 2550 Japan Model

North America / International

www.tennantco.com

9005432
Rev. 00 (08-2008)




STANDARD PARTS

When ordering replacement parts, use the illustrated parts lists section in this manual. Before ordering parts or supplies, be sure to have your machine model number and serial number available. Parts and supplies may be ordered by phone or mail from any authorized parts and service center, distributor or from any of the manufacturer's subsidiaries.


This machine will provide excellent service. However, the best results will be obtained at minimum costs if:

- The machine is operated with reasonable care.
- The machine is maintained regularly - per the machine maintenance instructions provided.
- The machine is maintained with manufacturer supplied or equivalent parts.



PROTECT THE ENVIRONMENT

Please dispose of packaging materials, old machine components such as batteries, hazardous fluids, including antifreeze and oil, in an environmentally safe way according to local waste disposal regulations.



Always remember to recycle.

MACHINE DATA

Please fill out at time of installation for future reference.

Model No. - _____

Serial No. - _____

Machine Options - _____

Sales Rep. - _____

Sales Rep. phone no. - _____

Customer Number - _____

Installation Date - _____

TENNANT Company
PO Box 1452
Minneapolis, MN 55440
Phone: (800) 553-8033 or (763) 513-2850
www.tennantco.com

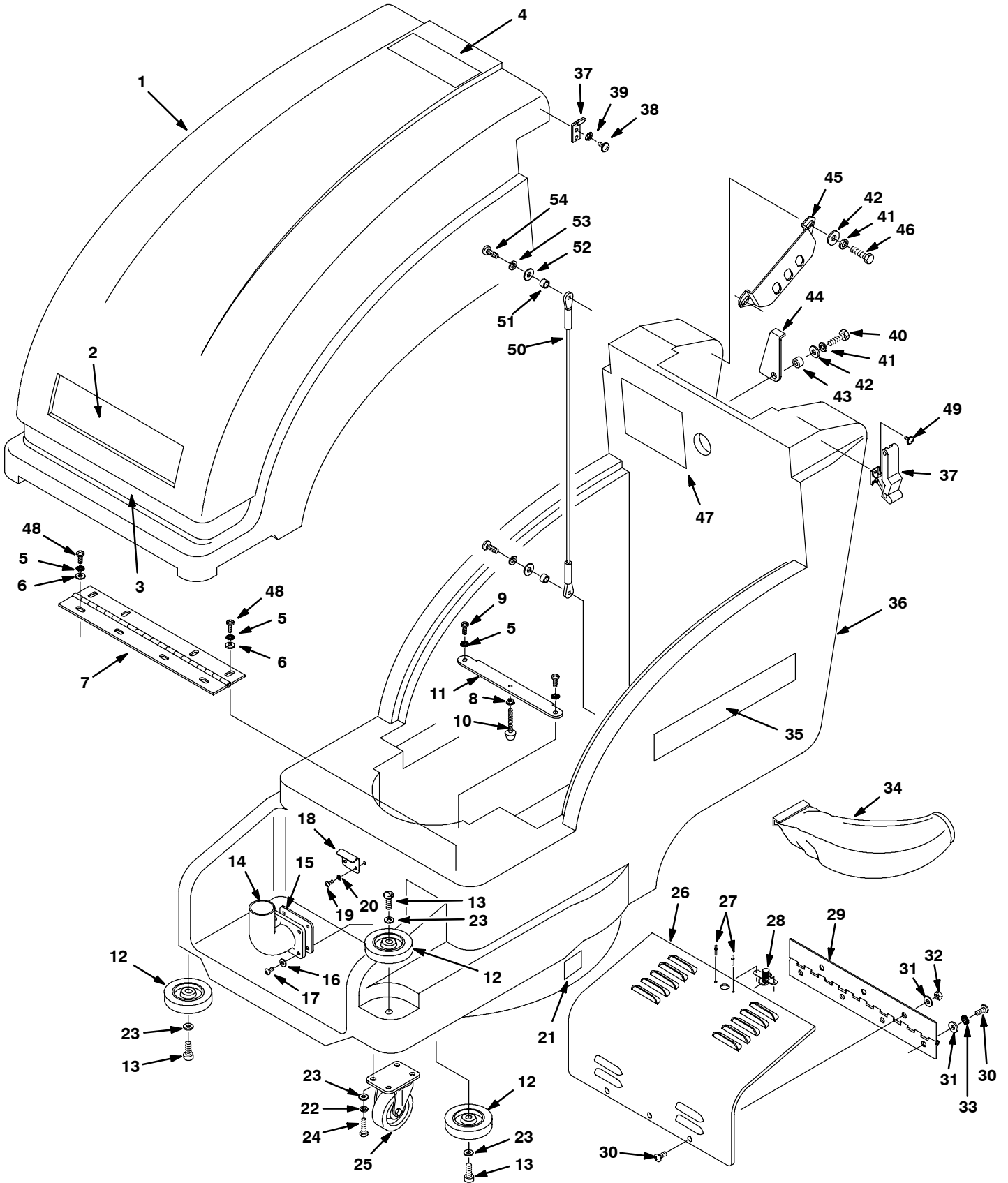
Specifications and parts are subject to change without notice.

Copyright © 2008 TENNANT COMPANY, Printed in U.S.A.
All rights reserved.

TABLE OF CONTENTS

STANDARD PARTS	4
MAIN HOUSING GROUP	4
PAD DRIVER GROUP	6
DRIVE GROUP (2550 MODEL)	8
WHEEL GROUP (2510 MODEL)	10
CONTROL CONSOLE GROUP (2550 MODEL)	12
CONTROL CONSOLE GROUP (2510 MODEL)	14
ELECTRICAL GROUP	16
BATTERY GROUP	18
OFF-BOARD BATTERY CHARGER GROUP	19
ON-BOARD BATTERY CHARGER GROUP	20
WIRING DIAGRAMS	22
OPTIONS	30
HOUR METER, EMERGENCY STOP AND KEYSWITCH KITS	30
LOW VOLT INTERRUPT KIT	31
PARKING BRAKE KIT	32
FLASHING LIGHT KIT	32
AIR INLET GROUP	33

MAIN HOUSING GROUP



MAIN HOUSING GROUP

REF	PART #	DESCRIPTION	QTY.
∇ 1	614230	ASM, COVER, BATT W/LABEL, TEAL	1
1	603965	COVER, BATTERY COMPARTMENT, GRAY	1
▲ 2	120192	DECAL, TENNANT LOGO	1
▲ 3	604297	DECAL, RECESS BLACK	1
▲ 4	1026386	LABEL, WARNING [EXPL,FIRE,SHK EN/FR/ES]	1
4	613862	LABEL, WARNING (JAPAN MODEL)	1
5	140016	WASHER, 1/4" LOCK	10
6	140000	WASHER, 1/4" FLAT	8
7	603268	HINGE, HOOD	1
8	140524	NUT, 1/4-20 KEP	1
9	363503	SCREW, PAN, M6X1.0X12, SS	2
10	606684	STOP, MOTOR	1
11	604276	BRACKET, MOTOR STOP	1
12	1014918	●WHEEL, 3.0D 0.88W 0.31B W/BUSHING	4
13	603154	SCREW, M8X1.25X40 PANPHL	4
14	613136	ELBOW, DEFLECTOR RM-NAT	1
15	100121	GASKET, ELBOW 1/4"	1
16	140011	WASHER, 3/16" FLAT	4
17	069760103	SCREW, #10X1 RNDPHL	4
18	604295	PLATE, LATCH	1
19	363503	SCREW, PAN, M6X1.0X12, SS	2
20	140016	WASHER, 1/4" LOCK	2
21	578769	DECAL, MOVING PARTS	2
22	140015	WASHER, 5/16" LOCK	4
23	140027	WASHER, 5/16" FLAT	8
24	15675	SCREW, HEX, M8X1.25X16, SS	4
25	103001	CASTER, SWIVEL 3"	1
26	608575	COVER, DUST BAG, TEAL	1
	608512	COVER, DUST BAG, BLACK	1
27	140706	RIVET, POP 1/8	2

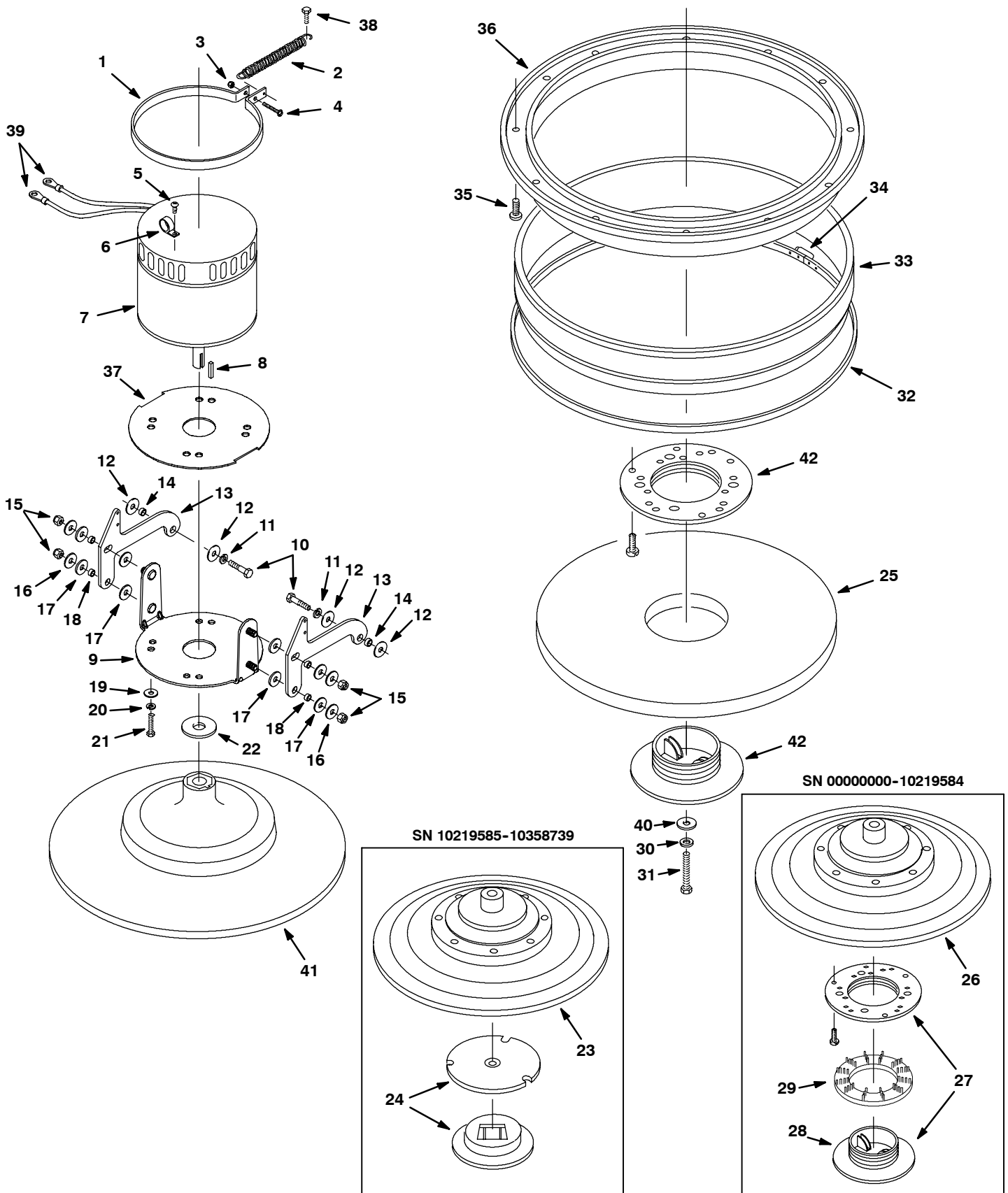
REF	PART #	DESCRIPTION	QTY.
28	140962	LATCH, SPRING KNURLED	1
29	603269	HINGE, DUST COVER	1
30	363503	SCREW, PAN, M6X1.0X12, SS	7
31	140000	WASHER, 1/4" FLAT	7
32	08712	NUT, HEX, LOCK, M6X1.0, SS, NL	3
33	140016	WASHER, 1/4" LOCK	4
34	900210	●BAG, CLOTH FILTER	1
	611781	●BAG, PAPER FILTER PK=10	1
35	608149	DECAL, 2550	2
	608150	DECAL, 2510	2
36	607600	CHASSIS, TEAL	1
	603964	CHASSIS, GRAY	1
37	49800	●LATCH, HOOD RBR W/KEEPER	2
38	200070340	SCREW, M4X.7X8 PANPHL	4
39	02938	WASHER, LOCK, INT, 08, SS	4
40	15675	SCREW, HEX, M8X1.25X16, SS	1
41	140015	WASHER, 5/16" LOCK	5
42	140027	WASHER, 5/16" FLAT	5
43	611418	BUSHING, 5/16ID X 7/16OD X .14	1
44	604637	SUPPORT	1
45	230661	PLATE, LOCK CONTROL HOUSING	2
46	15675	SCREW, HEX, M8X1.25X16, SS	4
47	604304	DECAL, BATT HOOK-UP & CAUTIONS	1
48	363503	SCREW, PAN, M6X1.0X12, SS	8
49	607006	SCREW, TRS, M4X.7X12	4
50	1001518	CABLE, GLV, .13D, 20.5L, .38 EYE / .38 EYE	1
51	1001553	BUSHING, SLEEVE, 0.25B, 0.36D, 0.16L, STL	2
52	140000	WASHER, FLAT, 0.28B, 0.62D, .04, SS	2
53	140016	WASHER, LOCK, SPLIT, 0.25, SS	2
54	600385	SCREW, PAN, M6X1.0X20, PHL, SS	2

∇ ASSEMBLY

▲ INCLUDED IN ASSEMBLY

● RECOMMENDED STOCK ITEMS

PAD DRIVER GROUP



PAD DRIVER GROUP

REF	PART #	DESCRIPTION	QTY.
1	604278	BRACKET, MOTOR SPRING	1
2	604333	SPRING, EXT .50X4X.063	1
3	08712	NUT, HEX, LOCK, M6X1.0, SS, NL	1
4	630431	SCREW, M6X1.0X40 HXHDCP	1
5	140890	SCREW, #10-24X1/2" TRSPLH	1
6	140323	CLAMP, NYLON 1/2" ID	1
∇ 7	603398	●MOTOR, 36VDC 2000 RPM 3HP	1
	621478	●BRUSH, CARBON	4
▲ 8	140628	KEY, MOTOR 3/16X1	1
9	1021186	BRACKET, MOUNT, MOTOR	1
10	09745	SCREW, HEX, M12X1.75X25, SS	2
11	140024	WASHER, 1/2" LOCK	2
12	140045	WASHER, 1/2" FLAT	4
13	603273	LIFT ARM MOTOR	2
14	140139	SLEEVE, P/M, 0.625D 0.500B 0.25L	2
15	36643	NUT, HEX, LOCK, .38-16, NL, THIN	4
16	140028	WASHER, 3/8" FLAT	4
17	20536-2	WASHER, FLAT, 0.47B 1.19D .03, NYL	8
18	600191	SLEEVE, P/M, 0.500D0.375B0.23L	4
19	140028	WASHER, 3/8" FLAT	4
20	140017	WASHER, 3/8" LOCK	4
21	02994	SCREW, HEX, .38-16X0.75, SS	4

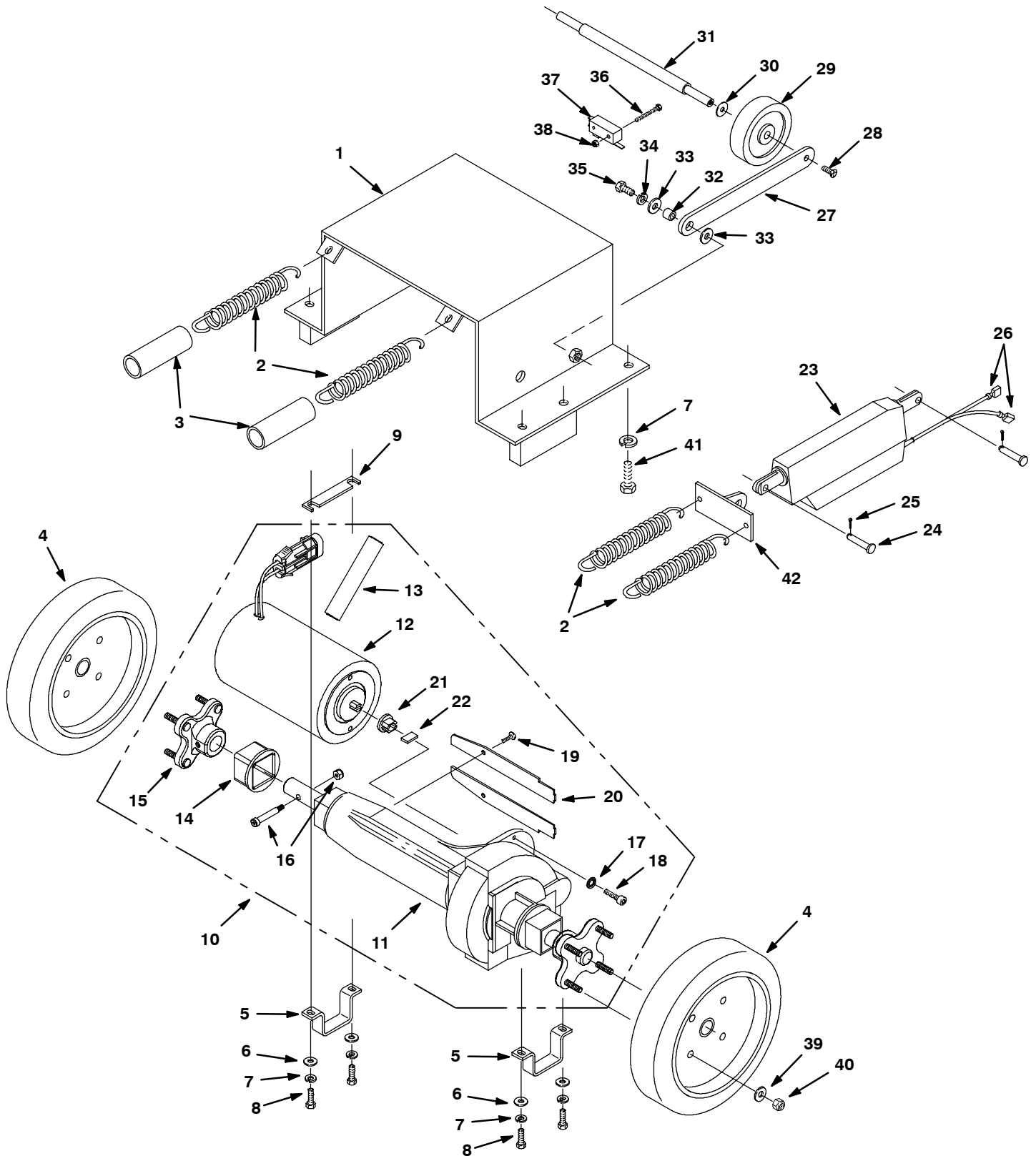
REF	PART #	DESCRIPTION	QTY.
22	069760023	WASHER, FLAT .77X1.26X.03	1
∇ 23	1019931	●PAD DRIVER 20" ASSY W/HUB (SN 10219585-10358739)	1
▲ 24	370095	●DEVICE, CENTERING	1
25	611788	●PAD, BRH 20" HB, CARTON = 5 PADS	1
∇ 26	605348	●PAD DRIVER 20" ASSY W/HUB (SN 00000000-10219584)	1
▲∇ 27	32506	●ASM., CENTERLOCK	1
▲ 28	100101	RING, PAD RETAINER	1
29	32505	●WASHER, PAD DRIVER LOCK	1
30	41186	WASHER, .31 BELLEVILLE	1
31	140203	SCREW, .31-24X1.25 HXHDCP	1
32	605103	●STRAP, 3/8X74 IN	1
33	603744	●SKIRT, DUST CONTROL	1
34	230913	SCREW CLAMP, SKIRT BANDING	1
35	140340	SCREW, #10-24X5/8 PANPHL	6
36	230888	RING, DUST SHIELD	1
37	600195	SEAL, MOTOR BASE	1
38	600385	SCREW, M6X1.0X20 PANPHL	1
39	130162	TERMINAL, RING 1/4 8GA RED	2
40	25732	WASHER, FLAT 1.25X.359X.093	1
∇ 41	1041196	●DRIVER ASSY, PAD, 20.0D, W/HUB (SN 10358740-)	1
▲ 42	630473	●DEVICE, CENTERING	1

∇ ASSEMBLY

▲ INCLUDED IN ASSEMBLY

● RECOMMENDED STOCK ITEMS

DRIVE GROUP (2550 MODEL)



DRIVE GROUP (2550 MODEL)

REF	PART #	DESCRIPTION	QTY.
1	603277	FRAME WELDMENT	1
2	140431	SPRING, EXT 1X.095X5	4
3	611023	SLEEVE, SPRING	2
4	613026	●WHEEL, 8.0D 2.00W	2
5	602881	BRACKET, TRANSAXLE MTG	2
6	140028	WASHER, 3/8" FLAT	4
7	140333	WASHER, M10 LOCK	6
8	06963	SCREW, M10X1.5X60 HEXHD	4
9	604293	SPACER, 3/4X4X1/16	1
∇ 10	1007083	TRANSAXLE, MOTOR, 36V (SN 10206962-)	1
	612845	TRANSAXLE, MOTOR, 36V (SN 00000000-10206962)	1
▲ 11	612873	BODY, TRANSAXLE ONLY	1
▲ 12	612878	MOTOR, TRANSAXLE	1
▲ 13	614166	●KIT, BRUSH, CARBON QTY (4) (SN 10206962-)	1
	612883	●KIT, BRUSH, CARBON QTY (2) (SN 00000000-10206962)	1
▲ 14	612880	SLEEVE, TRANSAXLE	2
▲ 15	612879	HUB, WHEEL TRANSAXLE	2
▲ 16	1043275	BOLT, NUT, TRANSAXLE	2
▲ 17	32982	WASHER, 1/4" LOCK	2
▲ 18	33951	SCREW, SOC, M6X1.0X20, 12.9 (SN 10206962-)	2
	01681	SCREW, SOC, 1/4-20X3/4 (SN 00000000-10206962)	2

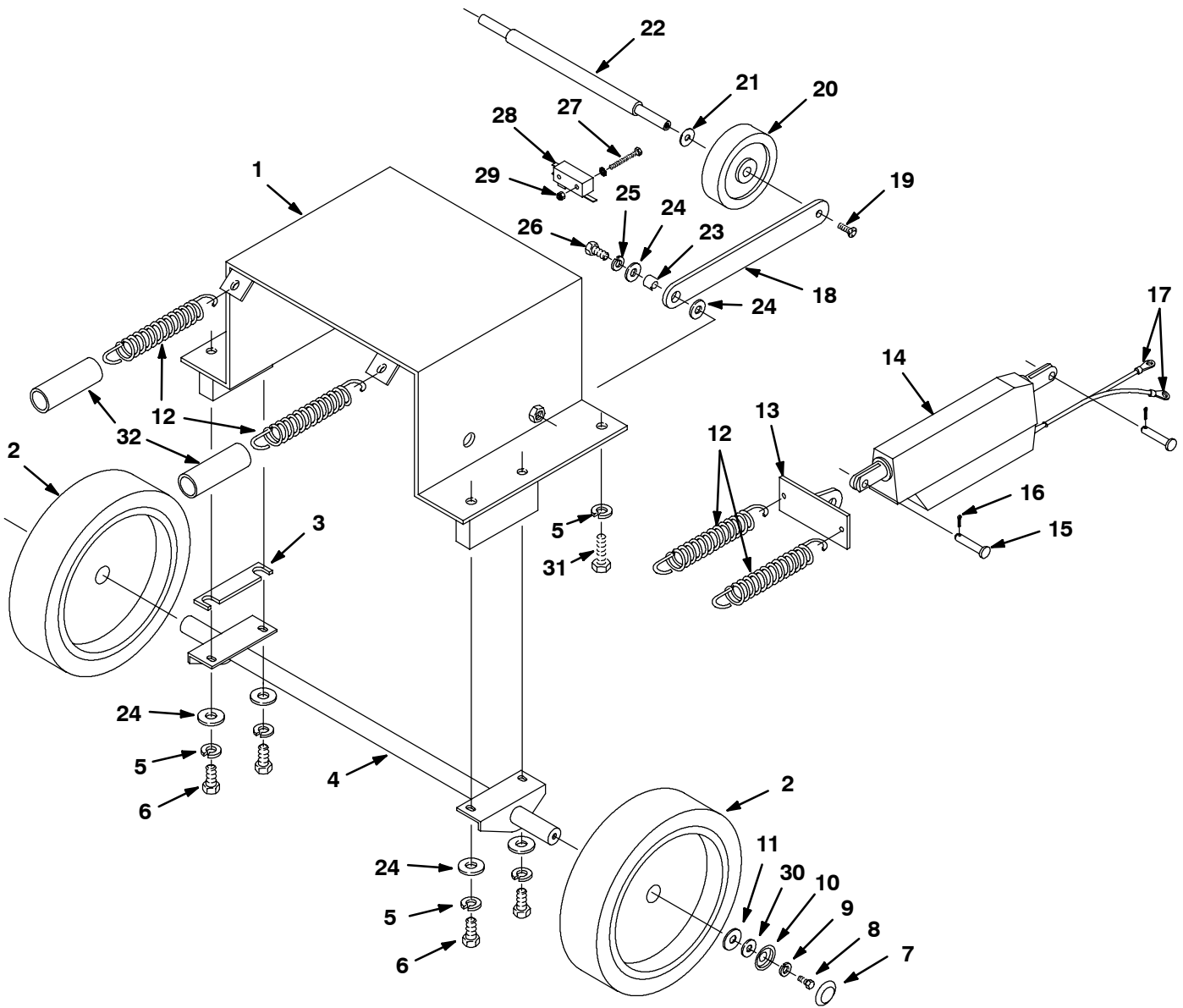
REF	PART #	DESCRIPTION	QTY.
▲ 19	577031000	SCREW, 8X1/2 PANPHL	2
▲ 20	N/A	COVER, TRANSAXLE	2
▲ 21	612874	COUPLING, TRANSAXLE REPLMT	1
▲ 22	612875	KEY, SPECIAL, TRANSAXLE REPLMT	1
23	600952	●ACTUATOR	1
24	604076	PIN, CLEVIS 10X28MM	2
25	578421	PIN, COTTER	2
26	130133	TERMINAL, MALE RED	2
27	603267	PLATE, PIVOT ARM	2
28	069762098	SCREW, M6X1.0X16 FLTPHL	2
29	103066	●WHEEL, 4"DIAX1.5X.50 GRAY	2
30	140045	WASHER, 1/2" FLAT	2
31	603274	AXLE, REAR WHEELS	1
32	140144	SLEEVE, P/M, 0.496D 0.318B 0.33L	2
33	140028	WASHER, 3/8" FLAT	4
34	140017	WASHER, 3/8" LOCK	2
35	69225	SCREW, 3/8-16X1 HXHDCP	2
36	140829	SCREW, #6-32X1 PANPHL	2
37	1013132	●SWITCH, LEVER, SNAP ACTION	1
38	140539	NUT, #6-32 KEP	2
39	140000	WASHER, 1/4" FLAT	8
40	41169	NUT, 1/4-20 NYLOCK	8
41	09291	SCREW, HEX, M10X1.5X20, SS	2
42	609450	BRACKET, SPRING	1

∇ ASSEMBLY

▲ INCLUDED IN ASSEMBLY

● RECOMMENDED STOCK ITEMS

WHEEL GROUP (2510 MODEL)



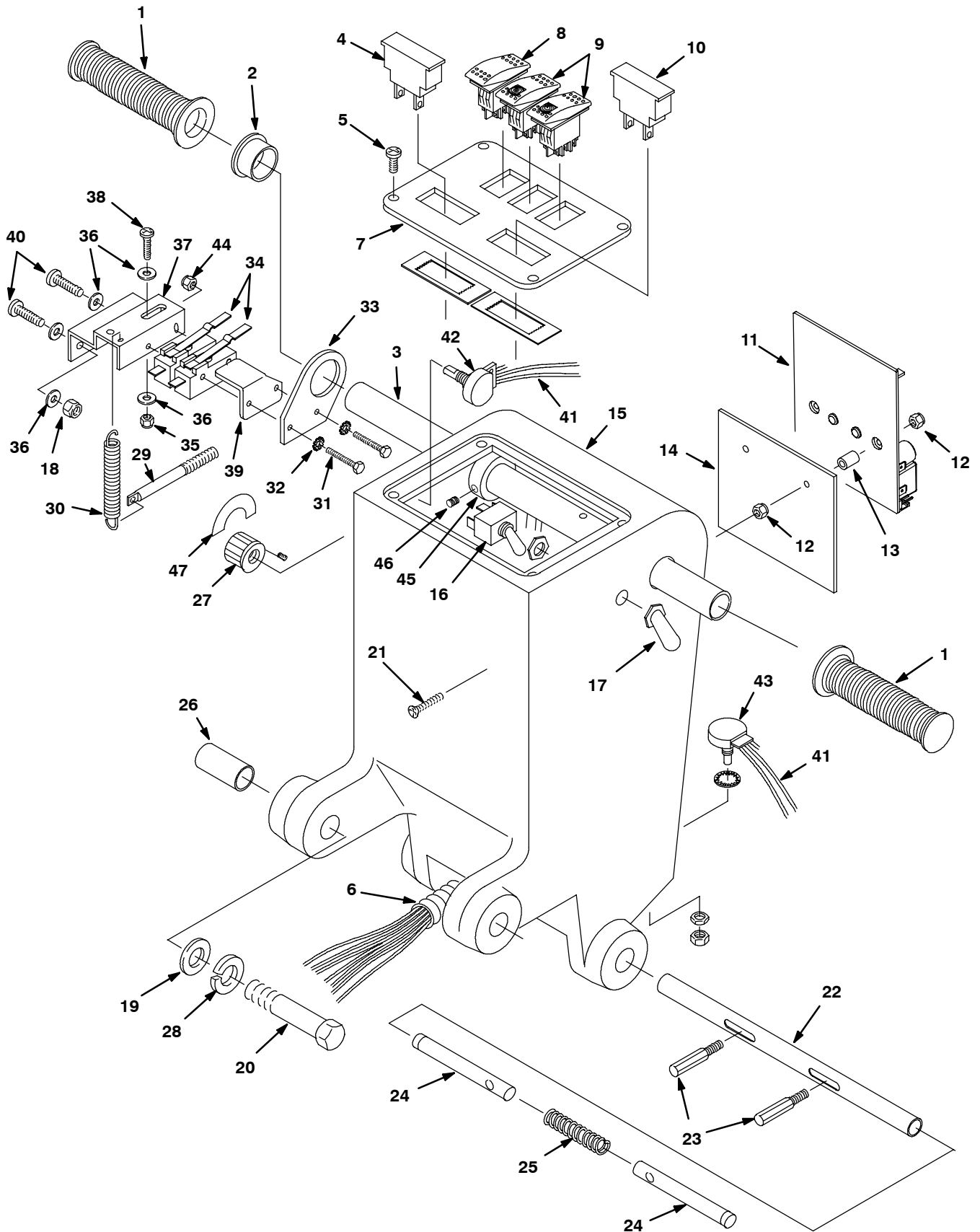
WHEEL GROUP (2510 MODEL)

REF	PART #	DESCRIPTION	QTY.
1	603277	FRAME WELDMENT	1
2	1012021	●WHEEL, 8.0D 1.50W POLY	2
3	604293	SPACER, 3/4X4X1/16	1
4	603275	AXLE WELDMENT	1
5	140333	WASHER, M10 LOCK	6
6	06963	SCREW, HEX, M10X1.5X60, 8.8	4
7	150210	PLUG, CAP BLACK	2
8	15675	SCREW, HEX, M8X1.25X16, SS	2
9	140015	WASHER, 5/16" LOCK	2
10	140048	WASHER, 5/16 (FOR #150210)	2
11	140047	WASHER, 1.24X.754X.062	2
12	140431	SPRING, EXT 1.0X5	4
13	609450	BRACKET, SPRING	1
14	600952	●ACTUATOR	1
15	604076	PIN, CLEVIS 10X28MM	2
16	578421	PIN, COTTER	2

REF	PART #	DESCRIPTION	QTY.
17	130133	TERMINAL, MALE .25	2
18	603267	PLATE, PIVOT ARM	2
19	069762098	SCREW, M6X1.0X16 FLTPHL	2
20	103066	WHEEL, 4"DIA X 1.5HUB X .50 GRAY	2
21	140045	WASHER, 1/2" FLAT	2
22	603274	AXLE, REAR WHEELS	1
23	140144	BUSHING, .375X.500	2
24	140028	WASHER, 3/8" FLAT	8
25	140017	WASHER, 3/8" LOCK	2
26	69225	SCREW, 3/8-16X1 HXHDCP	2
27	140829	SCREW, #6-32X1 PANPHL	2
28	1013132	●SWITCH, LEVER, SNAP ACTION	1
29	140539	NUT, #6-32 KEP	2
30	140055	WASHER, FLAT .343X1.25X.057	2
31	09291	SCREW, HEX, M10X1.5X20, SS	2
32	611023	SLEEVE, SPRING	2

● RECOMMENDED STOCK ITEMS

CONTROL CONSOLE GROUP (2550 MODEL)



CONTROL CONSOLE GROUP (2550 MODEL)

REF	PART #	DESCRIPTION	QTY.
1	200823	GRIP, HANDLE TUBE	2
2	605351	BUSHING	1
3	604402	HANDLE, TUBE	1
4	603848	●GAUGE, PAD PRESSURE	1
5	604930	SCREW, TRS, M5X0.80X10, PHL, PL	4
6	613086	HARNESS, WIRE MAIN	1
	605840	WRAP, LOOM .75DIA, 1FT	1
7	603757	PANEL, SWITCH	1
8	603399	●SWITCH, DPDT MOM ON/OFF	1
9	601107	●SWITCH, LIGHTED ROCKER	2
10	603847	●METER, BATTERY VOLTAGE 36V	1
11	1000821	●CONTROLLER, PROPEL, 36VDC	1
12	02850	NUT, HEX, LOCK, M4X0.7, NL	4
13	630261	SPACER	2
14	630128	HEAT SINK	1
15	607556	HOUSING, CONTROL, TEAL	1
	604299	HOUSING, CONTROL, GRAY	1
16	601108	●SWITCH, TOGGLE	1
17	130753	BOOT, SWITCH	1
18	08712	NUT, HEX, LOCK, M6X1.0, SS, NL	2
19	140045	WASHER, 1/2" FLAT	2
20	140351	SCREW, M12X1.75X70 HXHD	2
21	630304	SCREW, M4X0.7X35, FLTPHL	2
22	230715	TUBE, HANDLE ADJUSTMENT	1
23	230649	PIN, HANDLE ADJUSTMENT	2

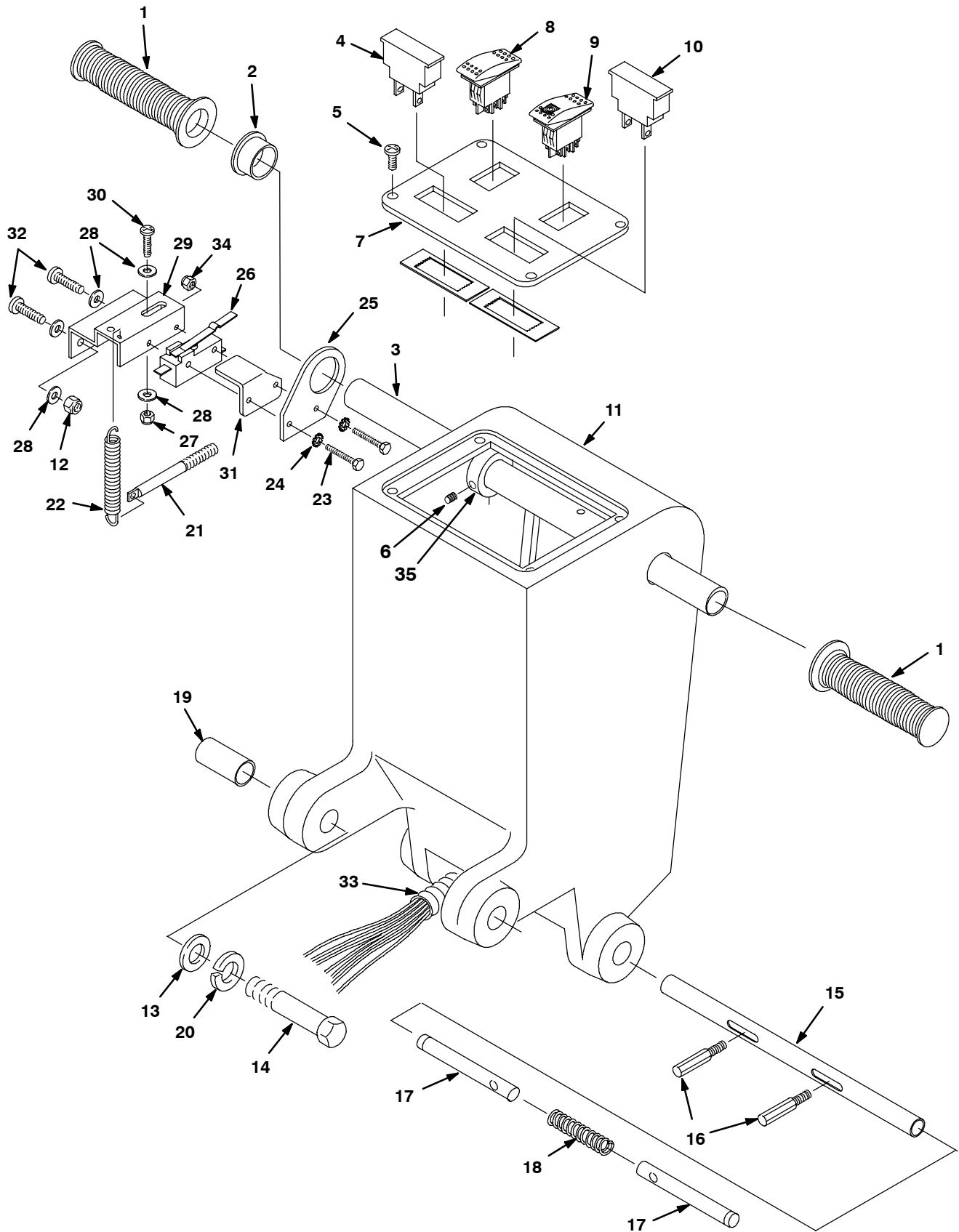
REF	PART #	DESCRIPTION	QTY.
24	230710	PIN, HANDLE LOCK	2
25	140415	SPRING, LOCK PIN	1
26	140155	BUSHING	2
27	606550	KNOB, SPEED CONTROL	1
28	140024	WASHER, 1/2" LOCK	2
29	602886	PIN, SPRING RETURN	1
30	605812	SPRING, EXTENSION	1
31	1048847	SCREW, HEX, #6-32X1.75 FL, SS	2
32	140019	WASHER, #6 LOCK	2
33	27098	BRACKET, SWITCH	1
34	614003	●SWITCH, ROLL	2
35	140552	NUT, #10-24 NYLOCK	1
36	140000	WASHER, 1/4" FLAT	5
37	25671	MOUNT, SWITCH	1
38	140890	SCREW, #10-24X1/2" TRSPHL	1
39	603830	PLATE, GUARD SWITCH	1
40	608322	SCREW, M6X1.0X16 TRSPHL	2
▽ 41	602873	●HARNESS CONSOLE W/POT.	1
▲ 42	130776	●POTENTIOMETER, 50K	1
▲ 43	130775	●POTENTIOMETER, 50K LOCKABLE	1
44	140540	NUT, #6-32 HEX	2
45	605094	COLLAR, HANDLE	2
46	140859	SET SCREW	2
47	606549	LABEL, SPEED CONTROL	1

▽ ASSEMBLY

▲ INCLUDED IN ASSEMBLY

● RECOMMENDED STOCK ITEMS

CONTROL CONSOLE GROUP (2510 MODEL)



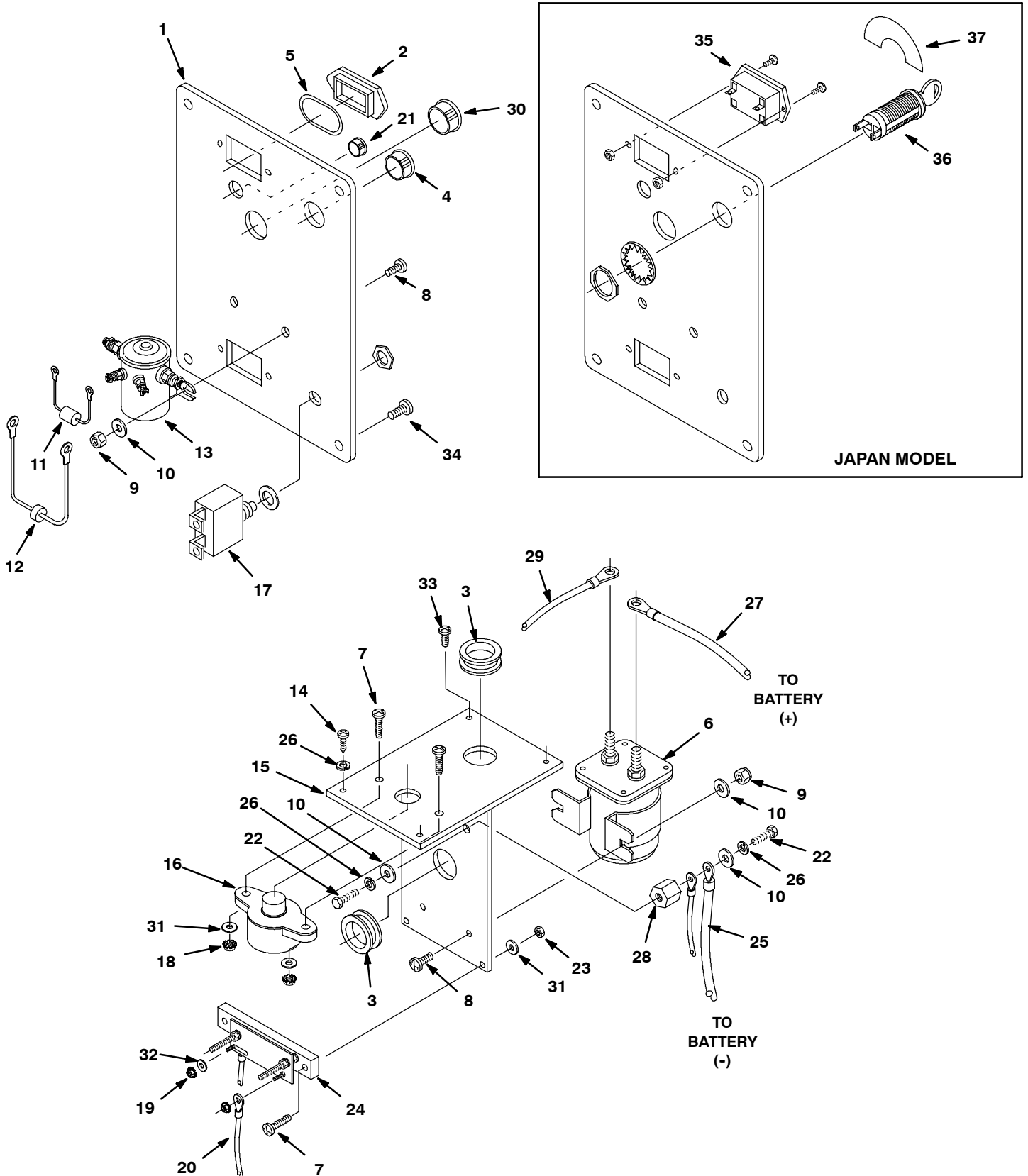
CONTROL CONSOLE GROUP (2510 MODEL)

REF	PART #	DESCRIPTION	QTY.
1	200823	GRIP, HANDLE TUBE	2
2	605351	BUSHING	1
3	604402	HANDLE, TUBE	1
4	603848	●GAUGE, PAD PRESSURE	1
5	604930	SCREW, TRS, M5X0.80X10, PHL, PL	4
6	140859	SET SCREW	2
7	604269	PANEL, SWITCH	1
8	603399	●SWITCH, DPDT MOM ON/OFF	1
9	601107	●SWITCH, LIGHTED ROCKER	1
10	603847	●METER, BATTERY VOLTAGE 36V	1
11	607604	HOUSING, CONTROL, TEAL	1
12	08712	NUT, HEX, LOCK, M6X1.0, SS, NL	2
13	140045	WASHER, 1/2" FLAT	2
14	140351	SCREW, M12X1.75X70 HXHD	2
15	230715	TUBE, HANDLE ADJUSTMENT	1
16	230649	PIN, HANDLE ADJUSTMENT	2
17	230710	PIN, HANDLE LOCK	2
18	140415	SPRING, LOCK PIN	1

REF	PART #	DESCRIPTION	QTY.
19	140155	BUSHING	2
20	140024	WASHER, 1/2" LOCK	2
21	602886	PIN, SPRING RETURN	1
22	605812	SPRING, EXTENSION	1
23	1048848	SCREW, HEX, #6-32X1 FL, SS	2
24	140019	WASHER, #6 LOCK	2
25	27098	BRACKET, SWITCH	1
26	614003	●SWITCH, ROLL	1
27	140552	NUT, #10-24 NYLOCK	1
28	140000	WASHER, 1/4" FLAT	5
29	25671	MOUNT, SWITCH	1
30	140890	SCREW, #10-24X1/2" TRSPHL	1
31	603830	PLATE, GUARD SWITCH	1
32	608322	SCREW, M6X1.0X16 TRSPHL	2
33	606539	HARNESS, WIRE MAIN	1
	605840	WRAP, LOOM .75DIA, 1FT	1
34	140540	NUT, #6-32 HEX	2
35	605094	COLLAR, HANDLE	2

● RECOMMENDED STOCK ITEMS

ELECTRICAL GROUP



ELECTRICAL GROUP

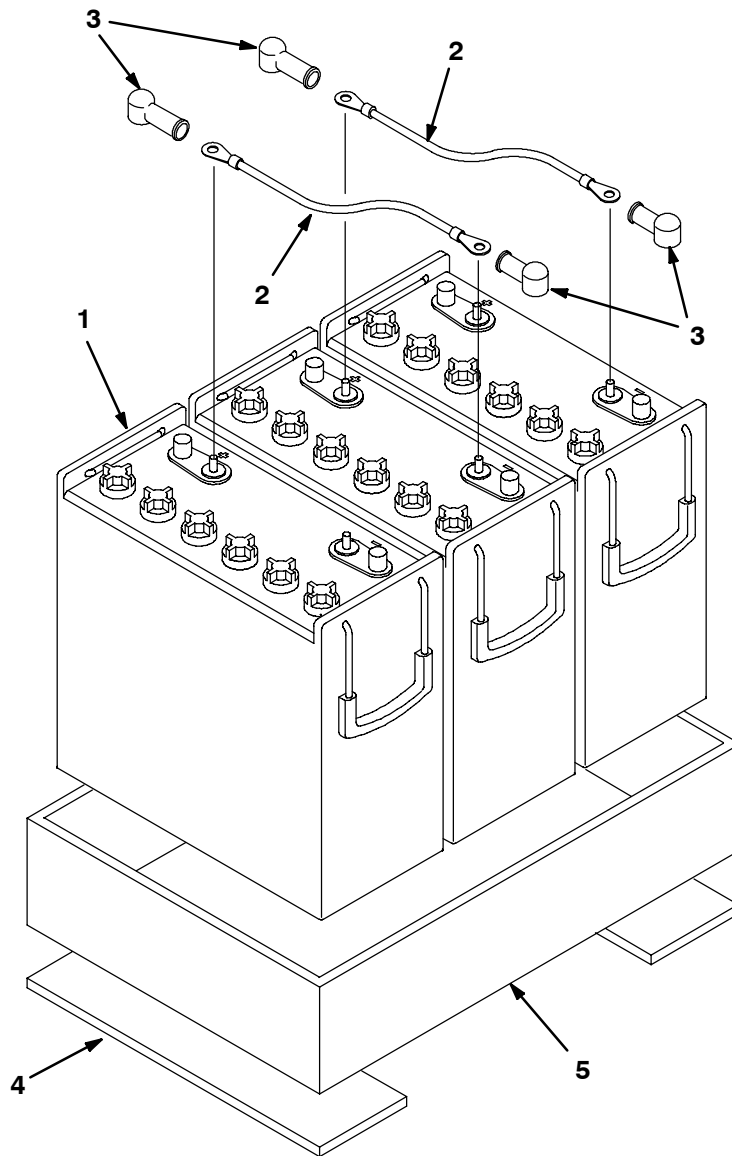
REF	PART #	DESCRIPTION	QTY.
1	604939	PANEL, CONTROL HOUSING	1
2	609969	PLUG, HOUR METER	2
3	069762009	GROMMET, DIA 25.4X03	2
4	130175	PLUG, DOME .750 DIA	1
5	605823	O-RING	2
6	612766	●CONTACTOR, 36VDC	1
7	578302000	SCREW, M5X0.8X20 PANPHL	4
8	608322	SCREW, M6X1.0X16 TRSPHL	4
9	08712	NUT, HEX, LOCK, M6X1.0, SS, NL	4
10	140000	WASHER, 1/4" FLAT	6
11	606404	●ASM., DIODE 400V (2550 MODEL)	1
12	604486	●DIODE, 400V (2550 MODEL)	1
13	130733	●SOLENOID, 36V (2550 MODEL)	1
14	363503	SCREW, PAN, M6X1.0X12, SS	3
15	604271	BRACKET, ELECTRICAL CHASSIS	1
16	130781	●BREAKER, CIRCUIT 80 AMP	1
17	603487	●BREAKER, CIRCUIT BRUSH 15A	1
18	09739	NUT, M5X0.8 NYLOCK	2
19	140524	NUT, 1/4-20 KEP	2
20	604292	ASM, WIRE #4 BLK X 6"	1
21	604940	PLUG, DOME .312 DIA	1

REF	PART #	DESCRIPTION	QTY.
22	01696	SCREW, 1/4-20X1/2 HXHDCP	2
23	09739	NUT, M5X0.8 NYLOCK	2
24	605292	SHUNT	1
25	604290	ASM, WIRE #4 BLK X 27"	1
26	140016	WASHER, 1/4" LOCK	5
27	604289	ASM, WIRE #4 RED X 46"	1
28	76062	INSULATOR, PANEL & SWITCH-BOARD	1
29	604291	ASM, WIRE #4 BLK X 6"	1
30	130161	PLUG, DOME .875 DIA	1
31	140011	WASHER, 3/16" FLAT	4
32	140026	WASHER, #6 FLAT	1
33	140340	SCREW, #10-24X5/8 PANPHL	1
34	604930	SCREW, TRS, M5X0.80X10, PHL, PL	4
35	1010555	●HOUR METER (JAPAN MODEL)	1
36	607475	●KEYSWITCH (JAPAN MODEL)	1
	607821	●KEY, REPLACEMENT (JAPAN MODEL)	1
37	604793	DECAL, KEYSWITCH (JAPAN MODEL)	1

● RECOMMENDED STOCK ITEMS

STANDARD PARTS

BATTERY GROUP

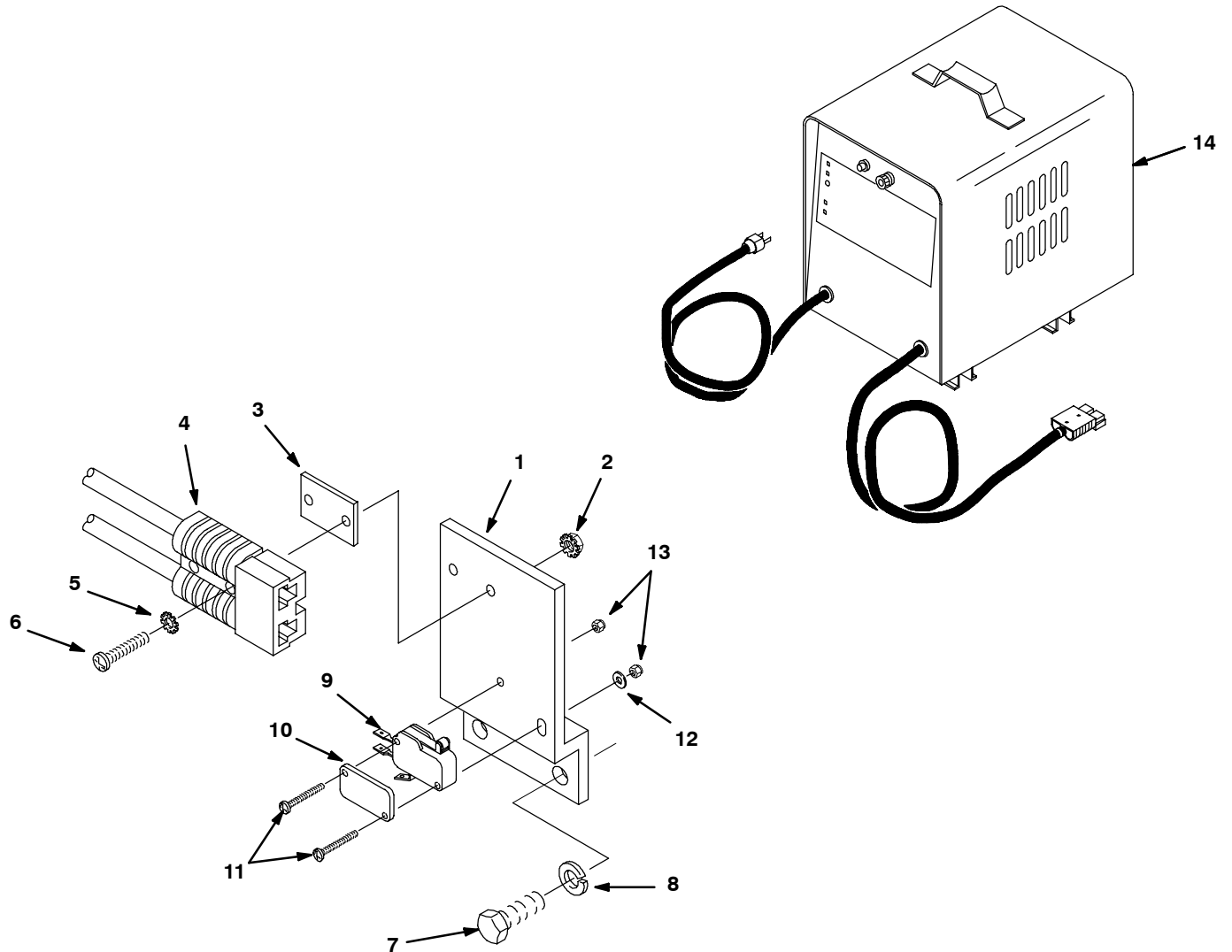


REF	PART #	DESCRIPTION	QTY.
1	600394	●BATTERY, 12V 215A (OPTIONAL)	3
2	611116000	●CABLE, BATTERY #6 BLACKX15"	2
3	611221	●BOOT, BATTERY, BLACK	6

REF	PART #	DESCRIPTION	QTY.
4	611022	GASKET, BATTERY TRAY	2
5	604298	TRAY, BATTERY	1

● RECOMMENDED STOCK ITEMS

OFF-BOARD BATTERY CHARGER GROUP

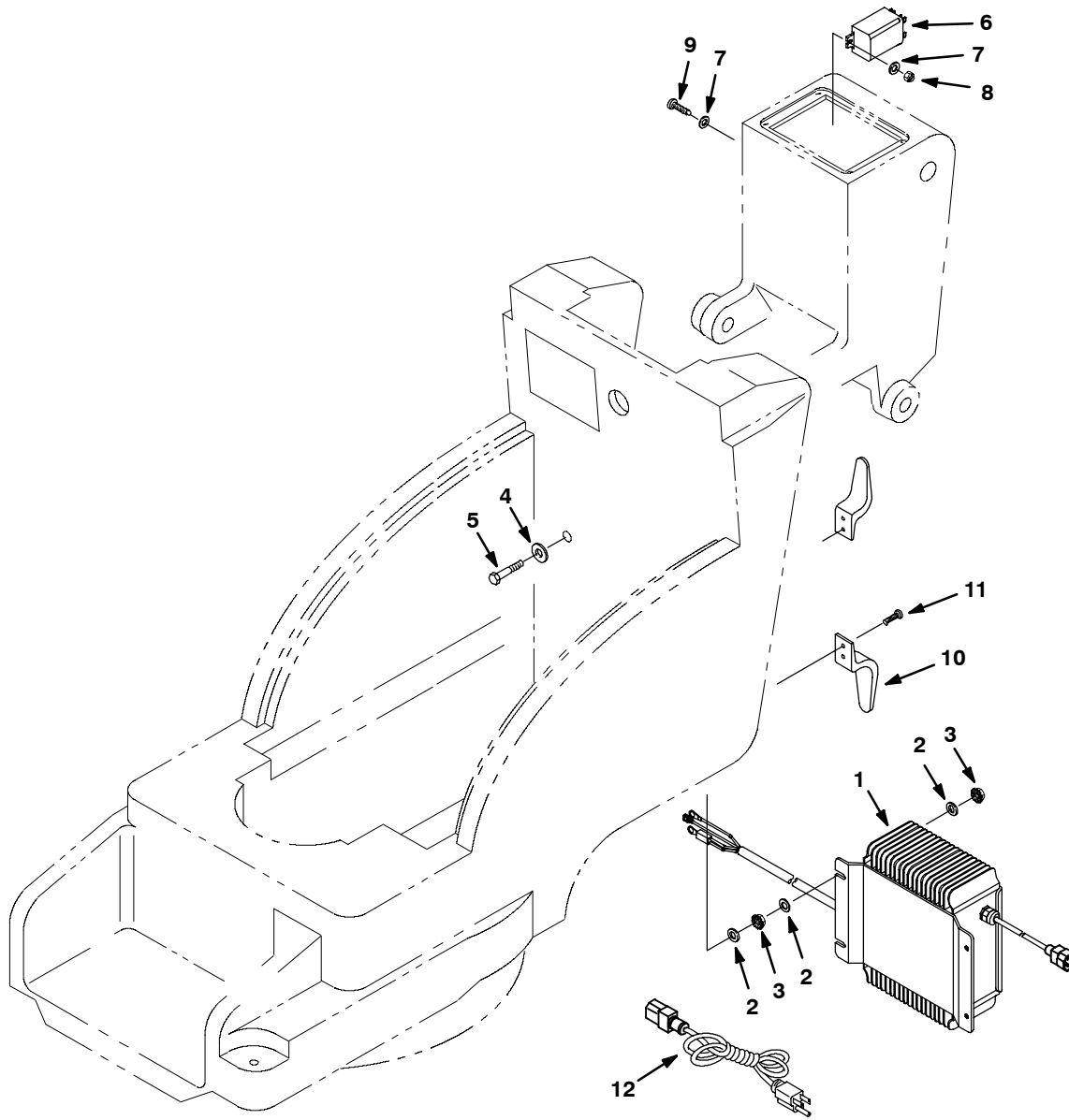


REF	PART #	DESCRIPTION	QTY.
1	604270	BRACKET, CHARGER PLUG	1
2	140539	NUT, #6-32 KEP	2
3	603331	SPACER, CHARGER PLUG	1
4	604288	ASM., CABLE CHARGE PLUG	1
5	140019	WASHER, #6 LOCK	2
6	140829	SCREW, #6-32X1 PANPHL	2
7	363503	SCREW, PAN, M6X1.0X12, SS	2
8	140016	WASHER, 1/4" LOCK	2

● RECOMMENDED STOCK ITEMS

REF	PART #	DESCRIPTION	QTY.
9	600437	●SWITCH, ROLLER 15A (2550 MODEL)	1
10	601359	PLATE, SWITCH BACKING (2550 MODEL)	1
11	578403000	SCREW, M3X20 PANPHL (2550 MODEL)	2
12	601127000	WASHER, M3.7 FLAT (2550 MODEL)	1
13	579211	NUT, M3X.5 HXLCK (2550 MODEL)	2
14	469760868	●CHARGER, 36DC 25 AMP (OPTIONAL)	1

ON-BOARD BATTERY CHARGER GROUP



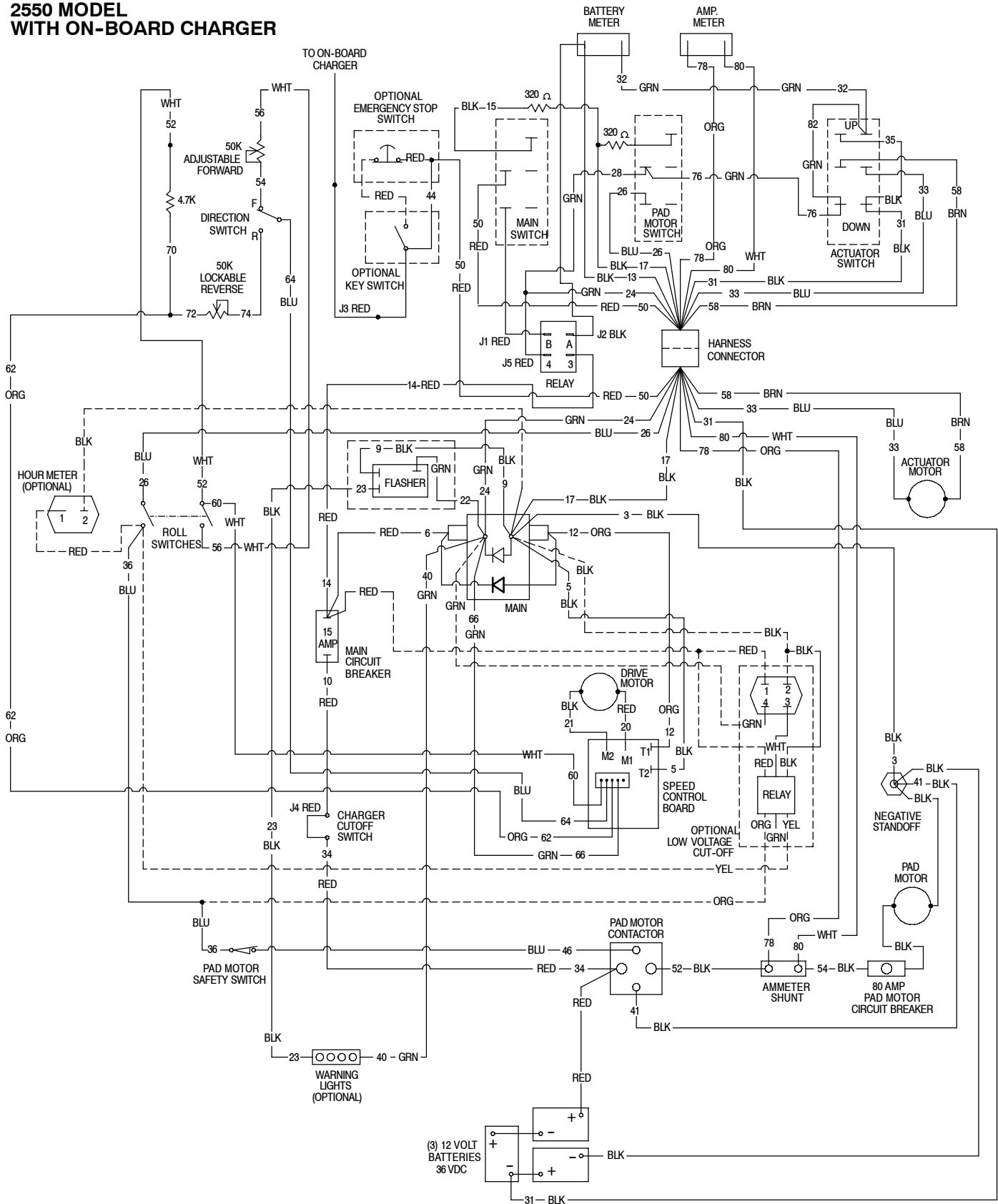
REF	PART #	DESCRIPTION	QTY.
1	1037826	CHARGER, 36VDC, 21A, VAR, VAC	1
2	140000	WASHER, FLAT, 0.28B, 0.62D, .04, SS	12
3	1007108	NUT, HEX, LOCK, M6X1.00, KEP, EXT	8
4	41178	WASHER, FLAT, 0.25, FENDER	4
5	06948	SCREW, HEX, M6X1.0X45, 8.8	4
6	86366	RELAY, 36VDC, 030A, SPDT	1

REF	PART #	DESCRIPTION	QTY.
7	140026	WASHER, FLAT, 06, SAE, PL	4
8	579211	NUT, HEX, LOCK, M3X0.50, SS	2
9	200070266	SCREW, PAN, M3X0.50X16, 4.8	2
10	230920.BK	HOOK, CORD, BLK	2
11	1009324	SCREW, PAN, #10-16X0.50, PHL, BLK	4
12	1017079	●CORD, EXTN, 16GA/3, 10FT	1

● RECOMMENDED STOCK ITEM

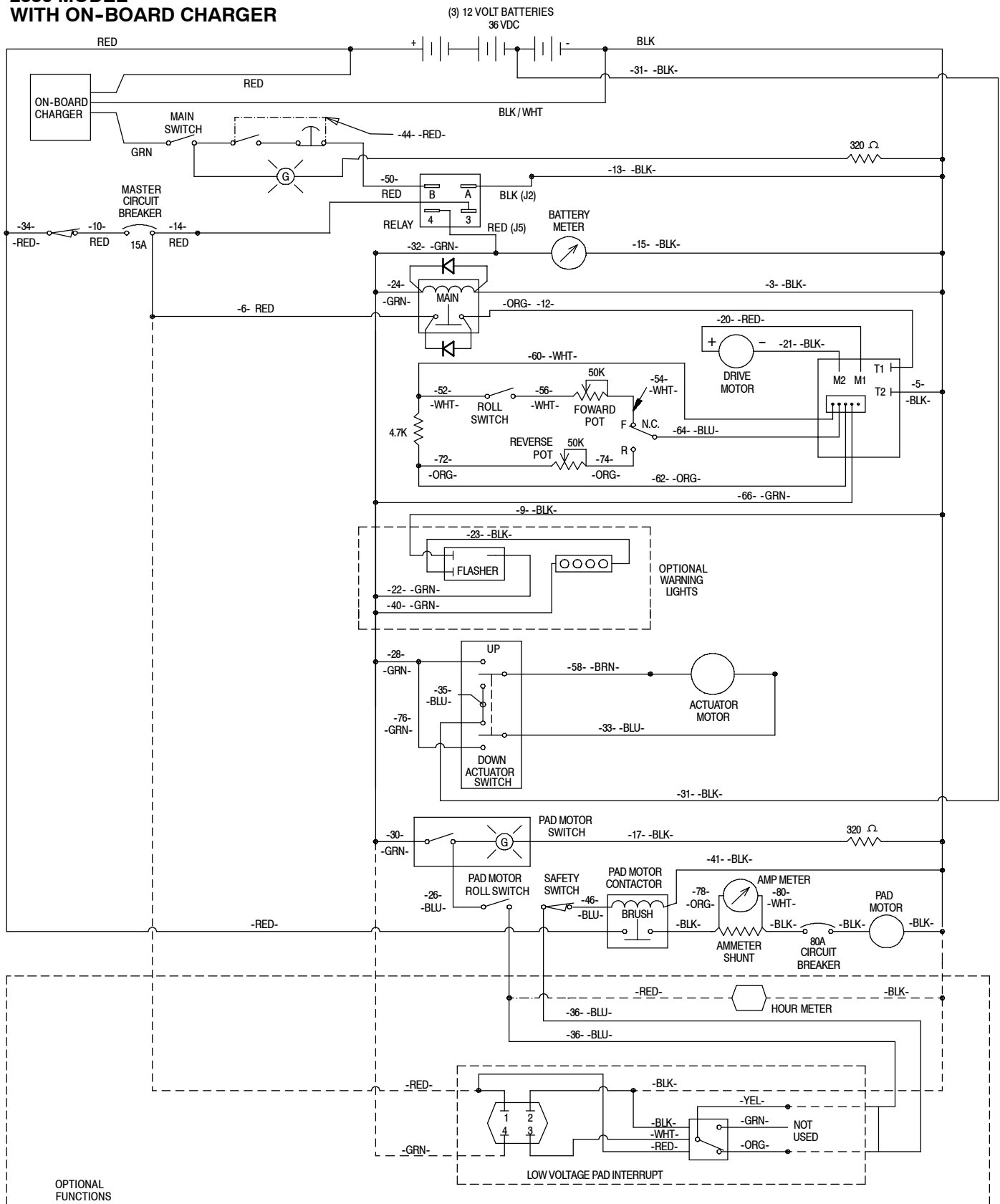
STANDARD PARTS

WIRING DIAGRAM 2550 MODEL WITH ON-BOARD CHARGER



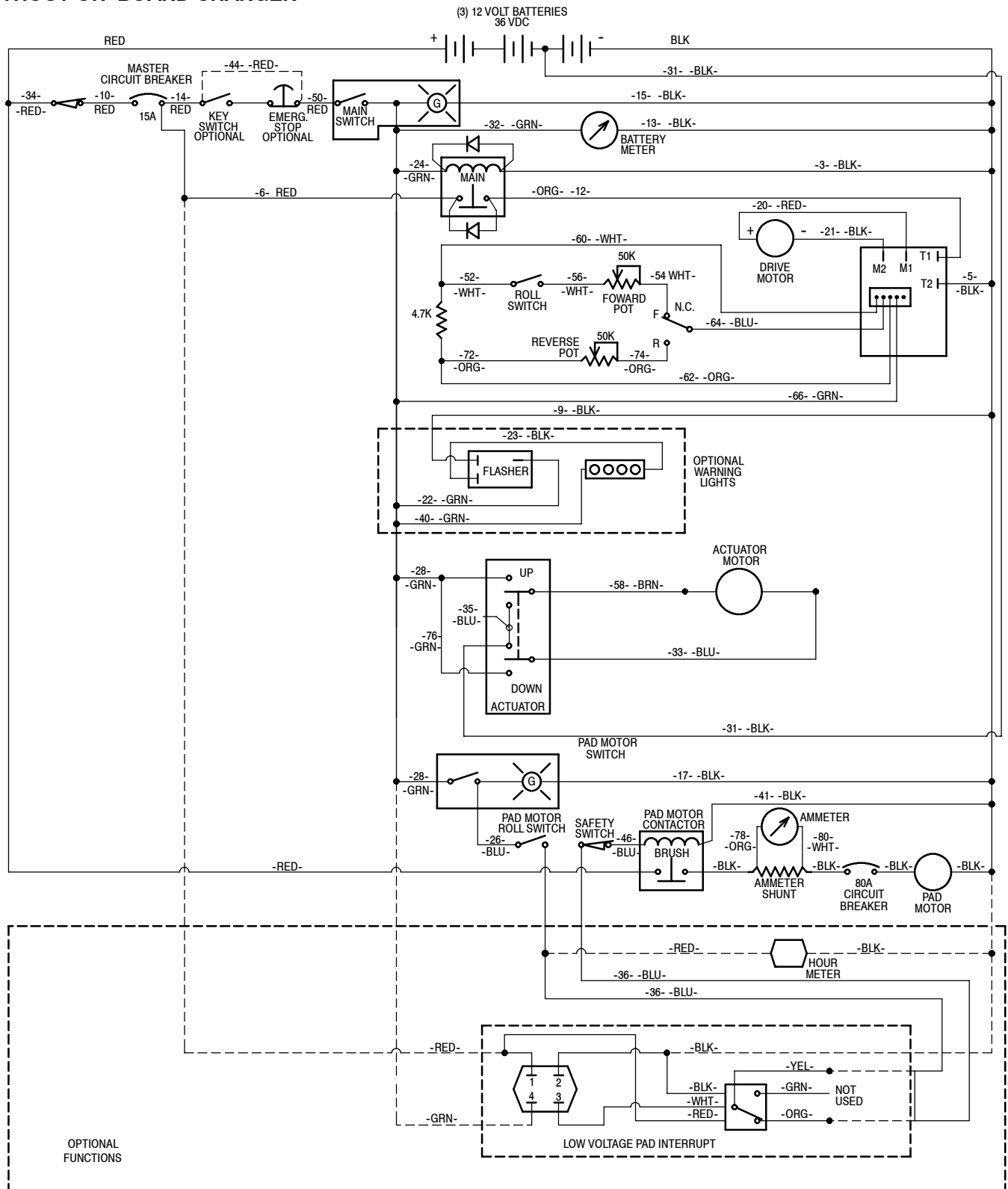
DWG #1042608

**LADDER DIAGRAM
2550 MODEL
WITH ON-BOARD CHARGER**



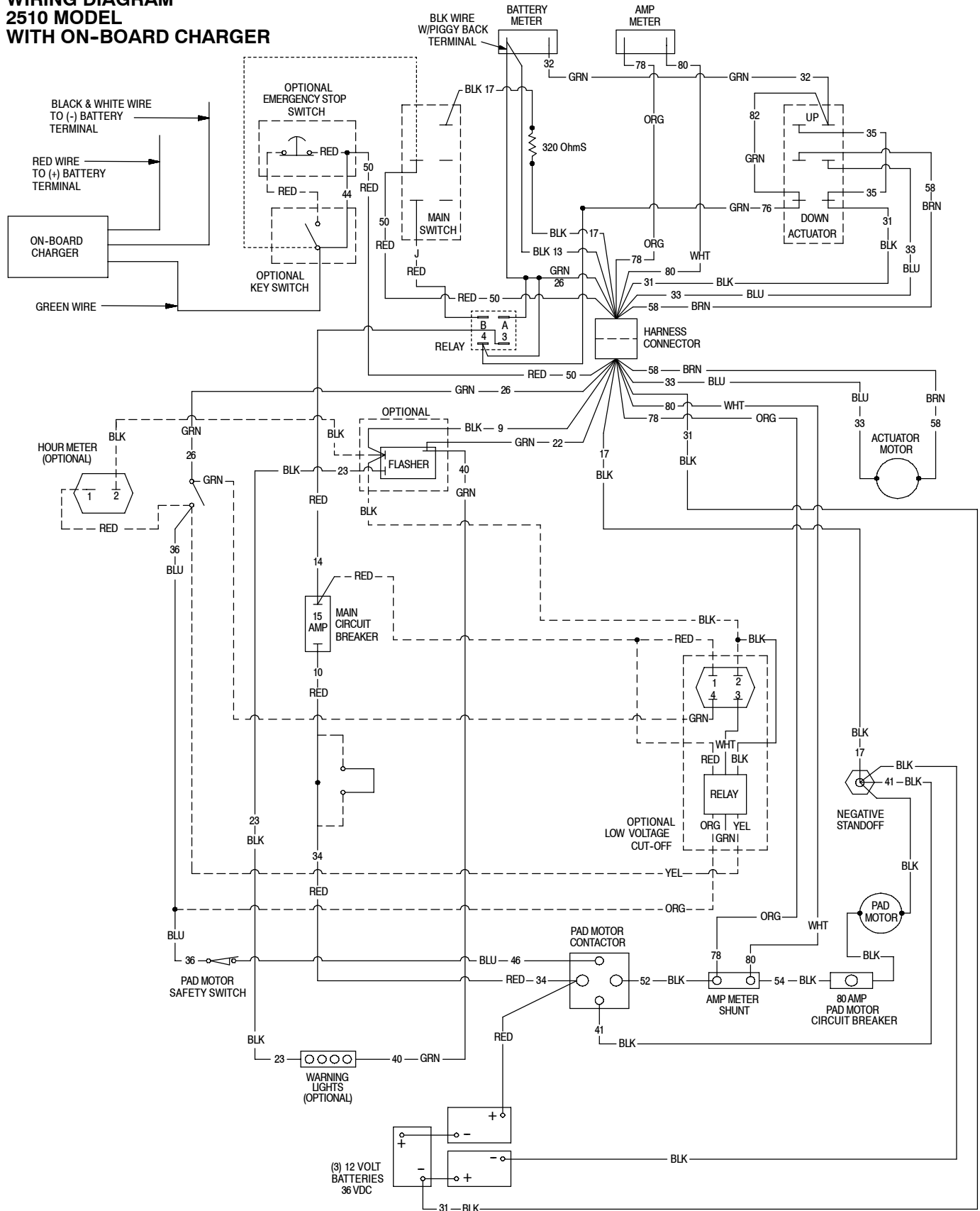
DWG # 1042588

LADDER DIAGRAM 2550 MODEL WITHOUT ON-BOARD CHARGER



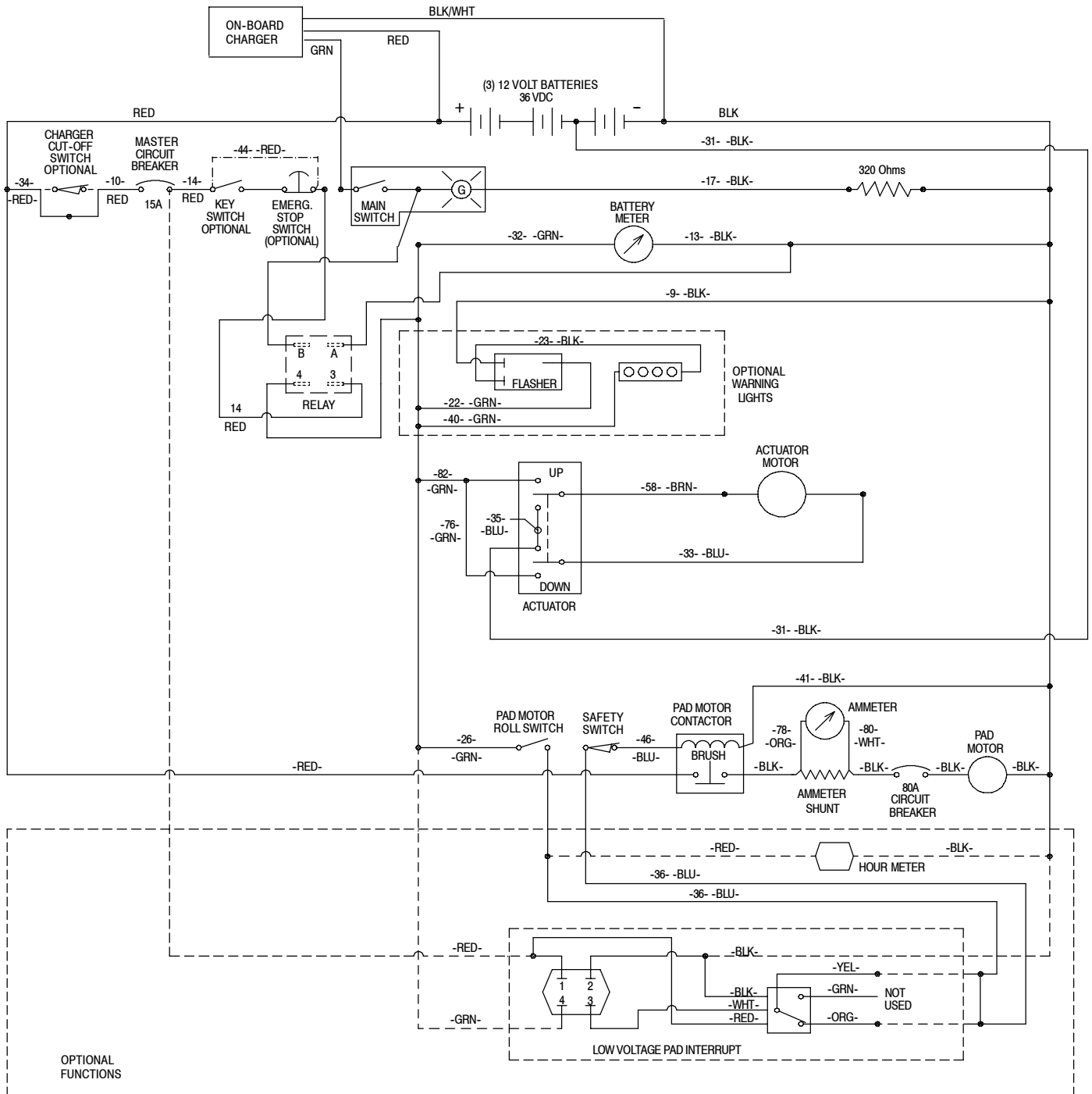
STANDARD PARTS

WIRING DIAGRAM 2510 MODEL WITH ON-BOARD CHARGER



DWG #1042613

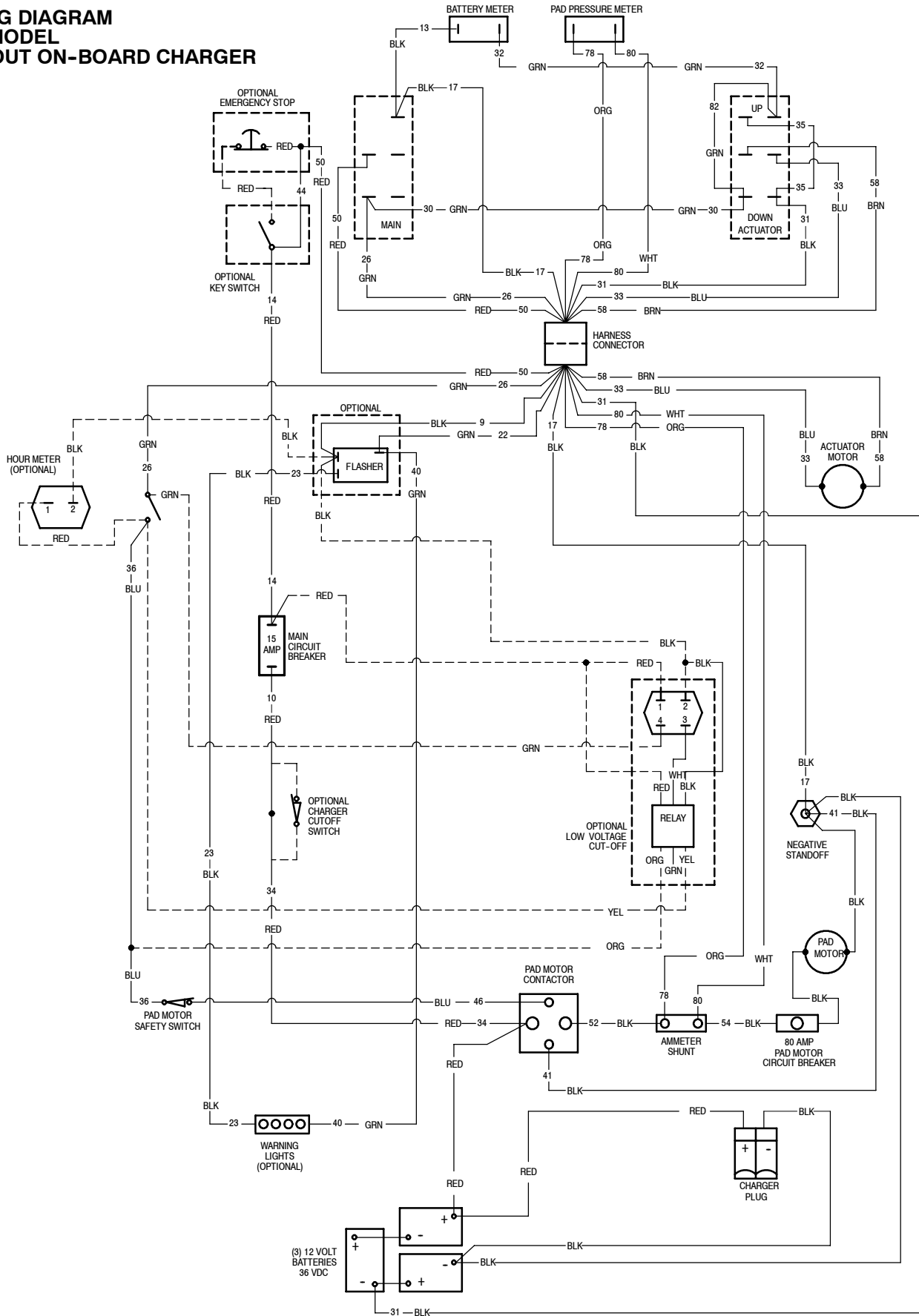
LADDER DIAGRAM
2510 MODEL
WITH ON-BOARD CHARGER



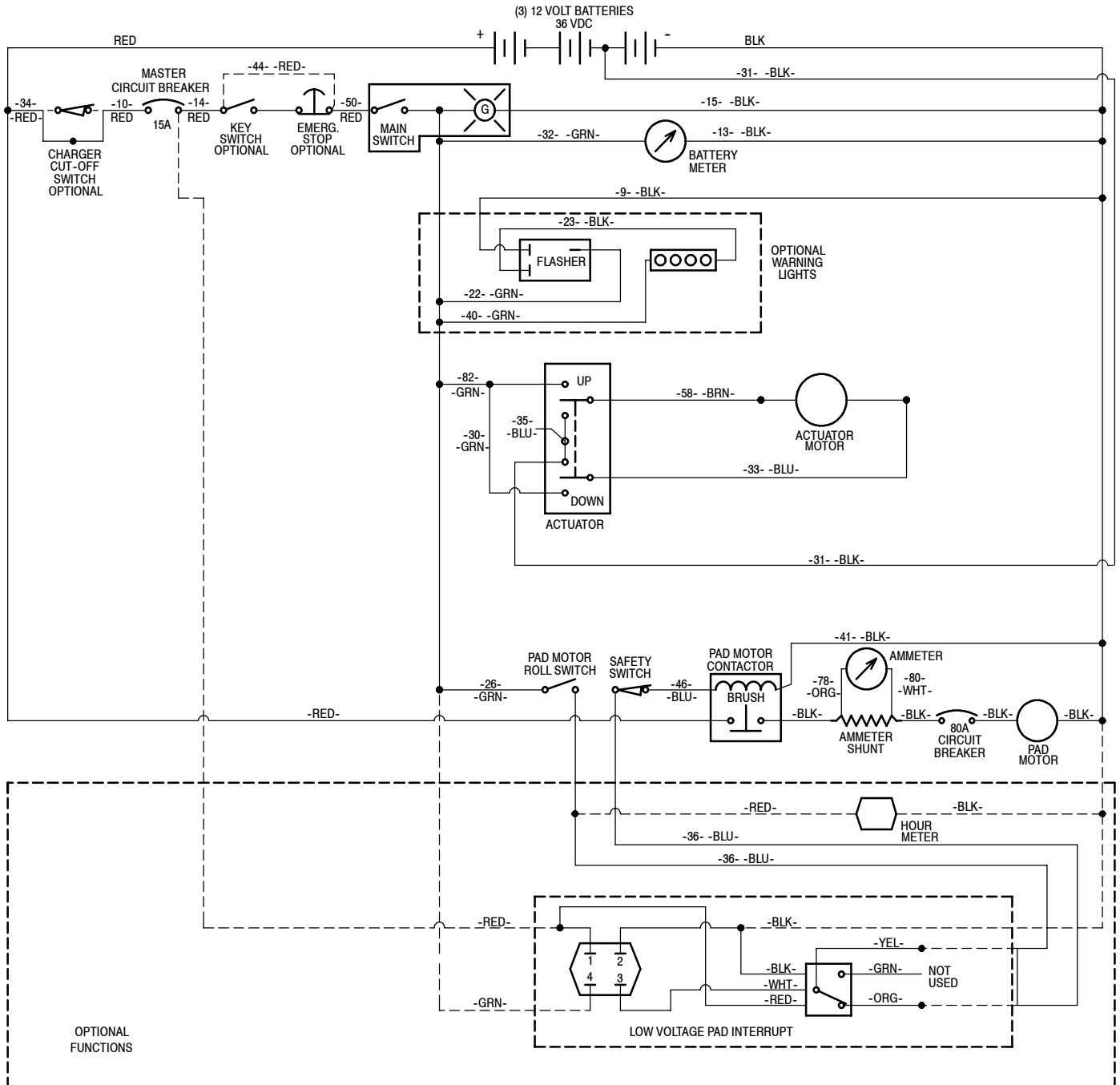
DWG #1042617

STANDARD PARTS

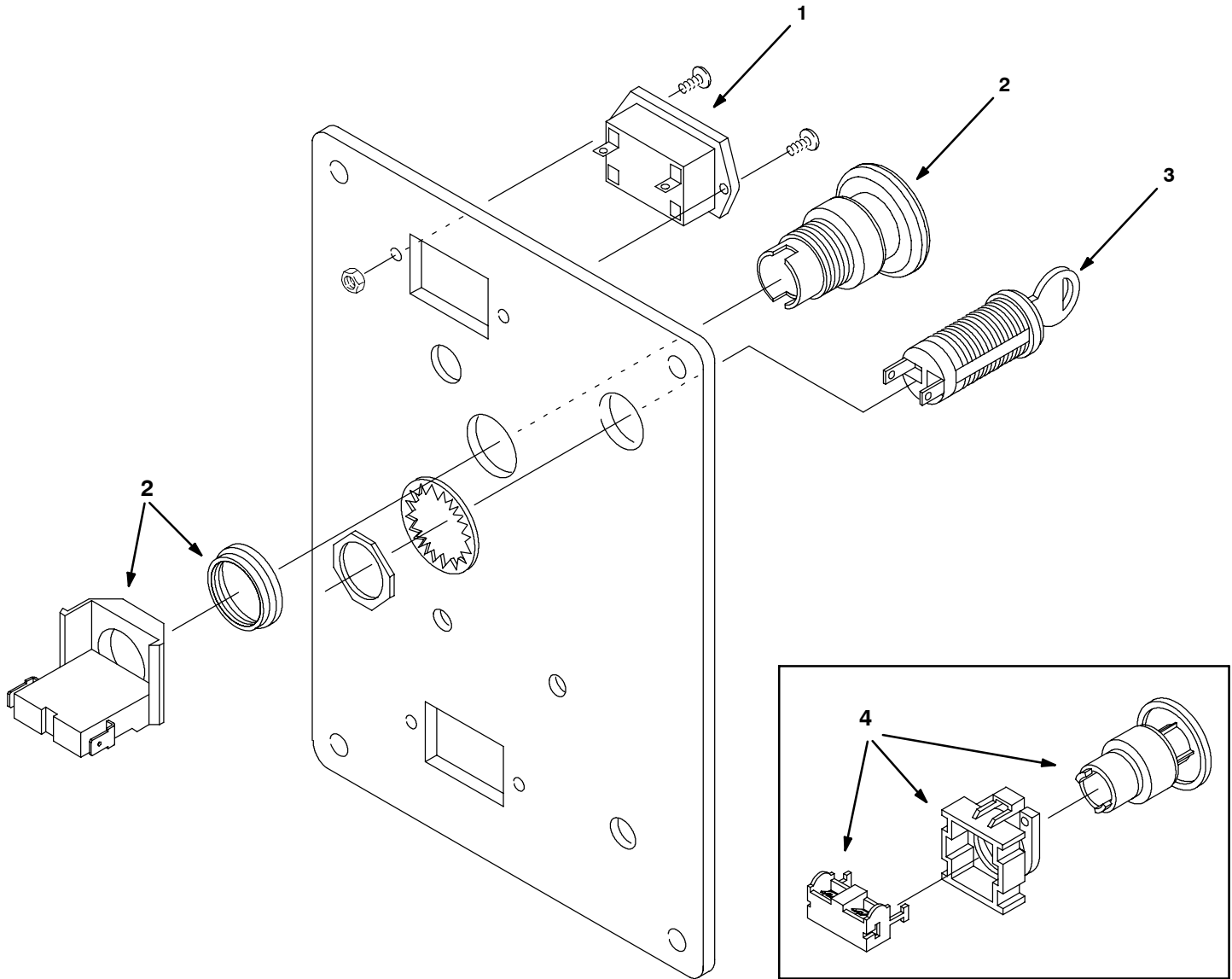
WIRING DIAGRAM 2510 MODEL WITHOUT ON-BOARD CHARGER



LADDER DIAGRAM 2510 MODEL WITHOUT ON-BOARD CHARGER



HOUR METER, EMERGENCY STOP AND KEYSWITCH KITS



REF	PART #	DESCRIPTION	QTY.
∇ 1	604501	●KIT, HOUR METER	1
▲	1010555	●HOUR METER	1
▲	603081	ASM., WIRE #18X12" RED	1
▲	604960	ASM., WIRE #18X9" BLACK W/ P-BACK. TER.	1
▲	603080	ASM., WIRE #18X8" BLACK W/ TERM. RING	1
▲	604643	ASM., WIRE #18X9" BLACK	1

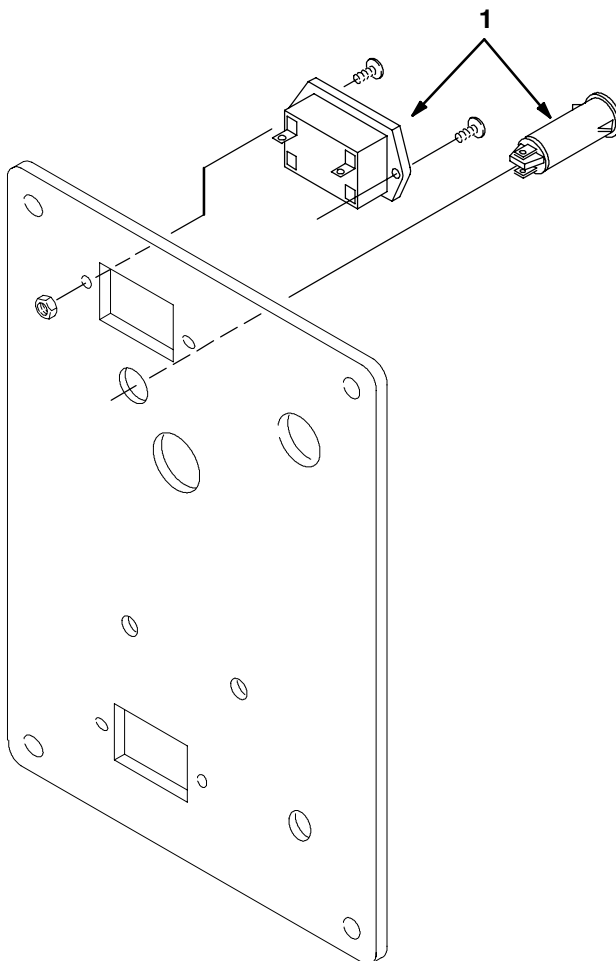
REF	PART #	DESCRIPTION	QTY.
∇ 2	602995	●KIT, EMERGENCY STOP	1
▲	1011735	●SWITCH, SAFETY, SHUTOFF	1
▲	602996	ASM, WIRE #16X5" RED 1/4FX1/4F	1
▲	602997	ASM, WIRE #16X5" RED 1/4MX1/4F	1
∇ 3	602993	●KIT, KEYSWITCH	1
▲	607475	●KEYSWITCH	1
▲	607821	●KEY, REPLACEMENT	1
4	N/A	REPLACED BY 602995	-

∇ ASSEMBLY

▲ INCLUDED IN ASSEMBLY

● RECOMMENDED STOCK ITEMS

LOW VOLT INTERRUPT KIT



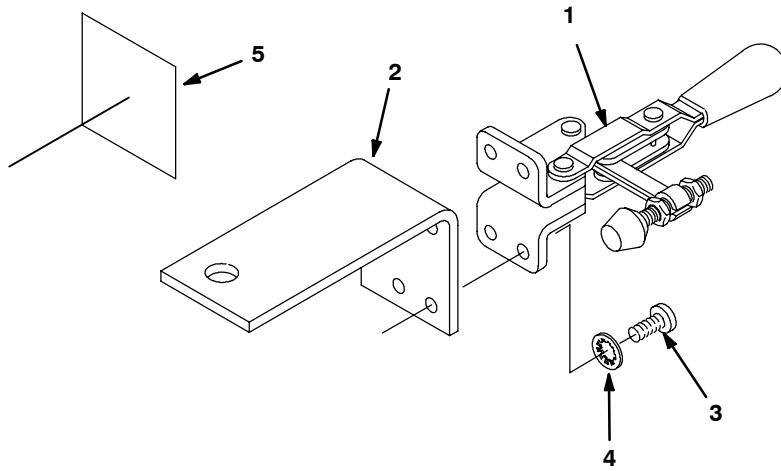
REF	PART #	DESCRIPTION	QTY.
▽ 1	604642	KIT, LOW VOLT INTERRUPT	1
▲	600832	GAUGE, BATTERY 36V	1
▲	604641	ASM, RELAY	1
▲	604643	ASM, WIRE #18X9 BLK 187F-1/4M	1
▲	604645	ASM, WIRE #18X11 GRN 187F-1/4M	1
▲	603078	ASM, WIRE #18X9"GRN .187FX#10R	1
▲	603080	ASM, WIRE #18X8" BK .187FX#10R	1
▲	603081	ASM, WIRE #18X12"RED .187FX#10R	1
▲	604960	ASM, WIRE #18X9"BLK .187F-1/4PB	1

REF	PART #	DESCRIPTION	QTY.
▲	600831	LAMP, RED, BK BODY 36V W/PUSHNUT	1
▲	130193	TERMINAL, RING #10 22-18	1
▲	281004001	TERMINAL, FM .25	1
▲	130040	WIRE TIE, NYLON 6 X .115	1
▲	610713	DECAL, LOW VOLTAGE	1
▲	130183	CONNECTOR, T-TAP FEMALE	1
▲	130133	TERMINAL, ML .25	1

▽ ASSEMBLY

▲ INCLUDED IN ASSEMBLY

PARKING BRAKE KIT



REF	PART #	DESCRIPTION	QTY.	
▽	604502	●KIT, PARKING BRAKE	1	
▲	1	600634	CLAMP, PARKING BRAKE	1
▲	2	603122	BRACKET, PARKING BRAKE	1

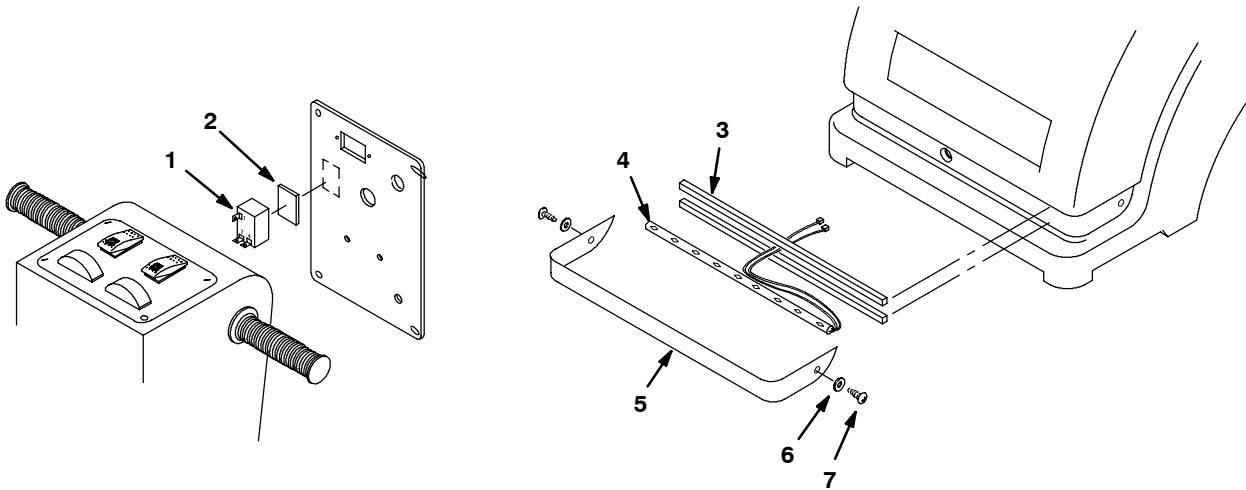
REF	PART #	DESCRIPTION	QTY.	
▲	3	140887	SCREW, #10-24X3/8 PANPHL	4
▲	4	07514	WASHER, LOCK, INT, #10, SS	4
▲	5	600624	DECAL, PARKING BRAKE	1

▽ ASSEMBLY

▲ INCLUDED IN ASSEMBLY

● RECOMMENDED STOCK ITEMS

FLASHING LIGHT KIT



REF	PART #	DESCRIPTION	QTY.	
▽	604500	●KIT, FLASHING LIGHTS	1	
▲	1	603839	●FLASHER, 36VDC	1
▲	2	606243	TAPE, ACRYLIC FOAM	1
▲	3	606242	GASKET	1

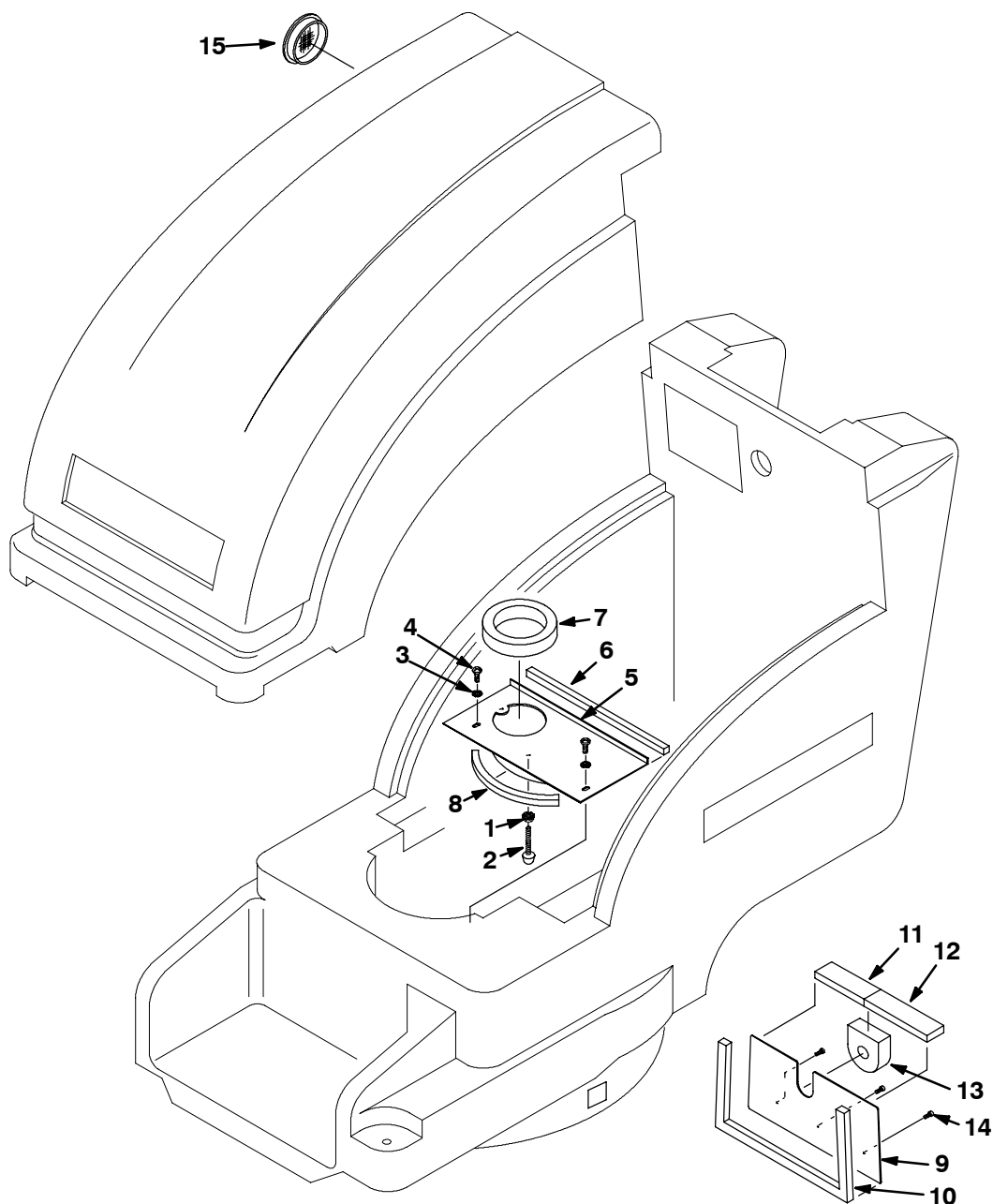
REF	PART #	DESCRIPTION	QTY.	
▲	4	603440	●LIGHT, SAFETY 36VDC	1
▲	5	612765	SHIELD, LIGHT	1
▲	6	578186000	WASHER, M4 FLAT	2
▲	7	200070340	SCREW, M4X.7X8 PANPHL	2

▽ ASSEMBLY

▲ INCLUDED IN ASSEMBLY

● RECOMMENDED STOCK ITEMS

AIR INLET GROUP



REF	PART #	DESCRIPTION	QTY.
1	140524	NUT, 1/4 X 20 KEP	1
2	606684	STOP, MOTOR	1
3	140016	WASHER, 1/4 LOCK	2
4	578187000	SCREW, M6X1.0X12	2
5	611472	PLATE, SEAL	1
6	611492	GASKET, STRIP, 1/2X1/2X12	1
7	611486	●GASKET, RING, SEAL PLATE	1
8	611361	GASKET, STRIP, 1/2X1/2X7	1

REF	PART #	DESCRIPTION	QTY.
9	611355	PLATE, AIR SEPARATOR	1
10	611357	GASKET, AIR SEPARATOR PLATE	1
11	611358	GASKET, SHORT SEPARATOR	1
12	611359	GASKET, LONG SEPARATOR	1
13	611360	GASKET, ACTUATOR	1
14	140825	SCREW, #6X1/2 PANPHL BZ	3
15	611473	●LOUVER, 3" DIA.	1

● RECOMMENDED STOCK ITEMS