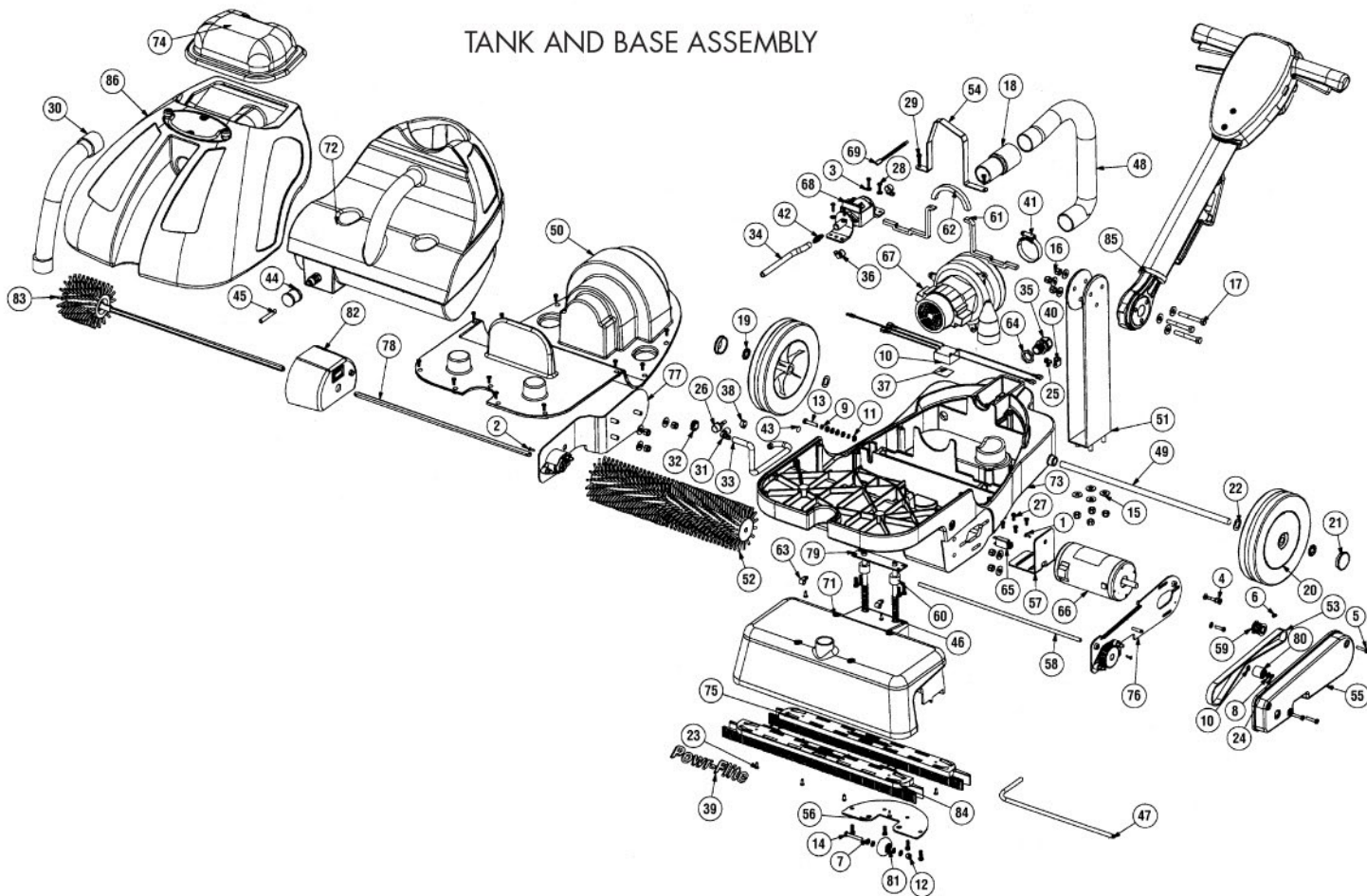


TANK AND BASE ASSEMBLY



| ref # | item # | description |
|-------|--------------|-------------------------------|
| 2 | CAS81 | M4 x 10 pozi hd screw |
| 4 | CAS124 | M5 x 20mm pozi pan head screw |
| 5 | CAS103 | M6 washer 14mm OD 1.6mm thick |
| 6 | CAS102 | M5 x 25mm pozi pan head screw |
| 7 | 00-0600-0723 | M6 nylon insert nut |
| 12 | 00-0600-0723 | M6 nylon insert nut |
| 14 | 00-0640-0121 | M6 x 40 hex head bolt |
| 15 | 00-0800-0721 | nut M8 nyloc |
| 16 | 00-0800-0551 | washer M8 form "C" |
| 18 | CAS120 | hose cuff 39mm |
| 19 | X8108 | washer plastic |
| 20 | SC339 | wheel assembly |
| 22 | CAS49 | crinkle washer |
| 26 | SC303 | female coupling connector |
| 30 | SC312 | vac pick up hose |
| 31 | SC310 | 1/4" metal elbow |
| 44 | SC333 | filter element |
| 44A | SC303 | bulkhead fitting |
| 45 | 03-6344-1000 | nylon tubing |
| 47 | CAS54 | spray bar |
| 49 | CAS56 | axle |
| 51 | CAS57 | handle support |
| 52 | CAS58G | heavy duty brush |
| 53 | CAS59 | drive belt |
| 65 | CAS61 | 1.5 amp current overload 240v |
| 66 | CAS62 | commutator motor |
| 67 | CAS63 | motor tangential discharge |
| 68 | CAS64 | pump with mounts |
| 69 | CAS65 | thermal overload |
| 70 | CAS66 | motor supressor |
| 74 | CAS67 | clear dome assembly |

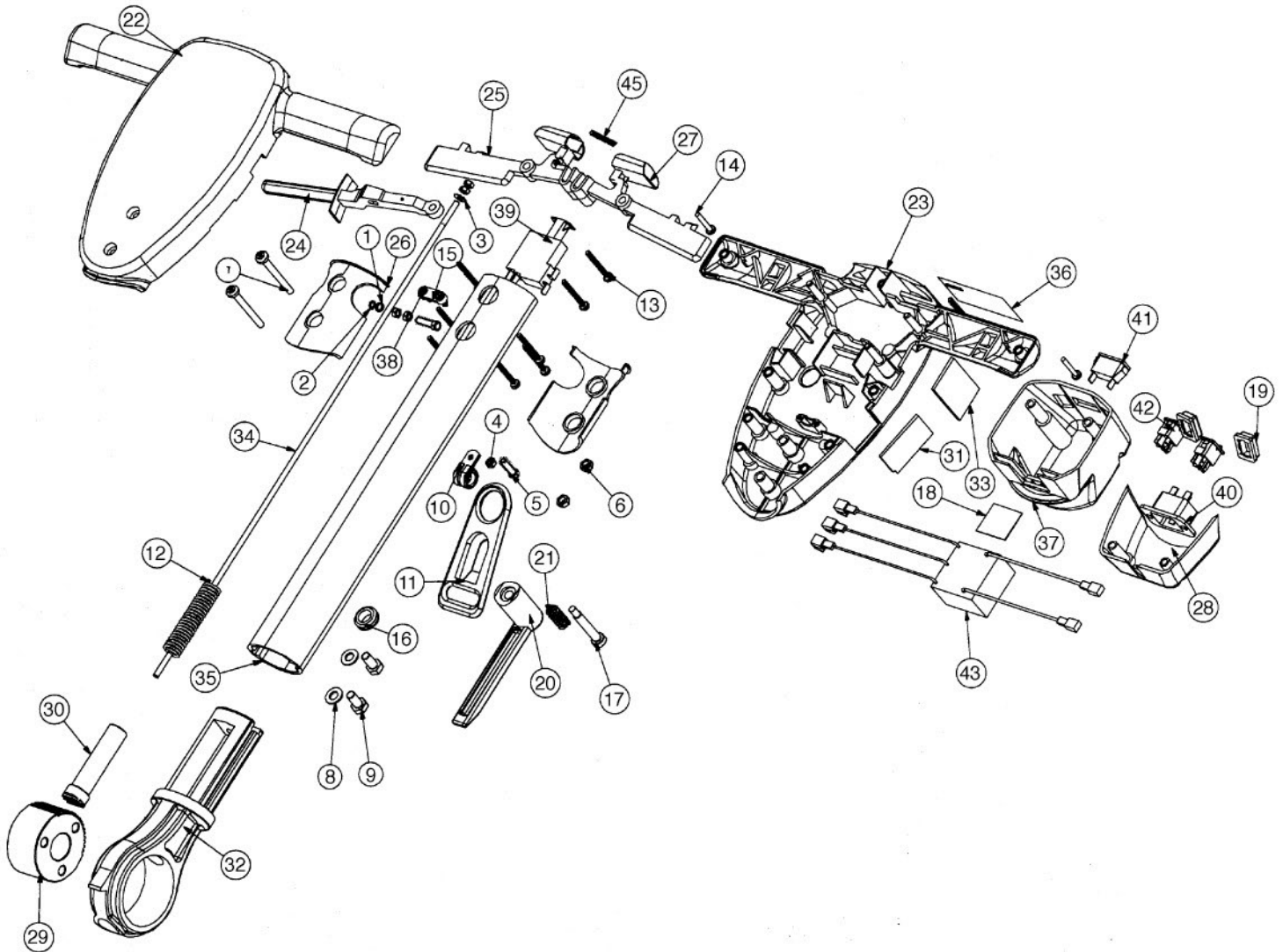
| ref # | item # | description |
|-------|--------|-----------------------------------|
| 75 | CAS68 | squeegee assembly |
| 76 | CAS69 | motor plate assembly |
| 77 | CAS70 | bearing plate assembly |
| 78 | CAS71 | brush axle assembly |
| 79 | CAS72 | vacuum shoe mount runner assembly |
| 81 | CAS74 | wheel assembly |
| 83 | CAS75 | side brush assembly |
| 84 | CAS76 | front squeegee carrier assembly |
| 86 | CAS107 | solution tank |

NOT ILLUSTRATED

| | |
|--------------|---------------------------------|
| CAS82 | caster wheel |
| CAS83 | wheel bearing |
| CAS84 | squeegee blade |
| CAS85 | squeegee roller assembly |
| CAS87 | idler pulley |
| CAS90 | bearing plate countersunk screw |
| CAS88 | bearing 6003-2RS |
| CAS93 | motor plate brush sprocket |
| CAS90 | motor plate countersunk screw |
| CAS94 | clear dome lid |
| CAS95 | clear dome lid seal |
| 04-3409-0000 | chassis bridge rectifier 25 amp |
| CAS98 | chassis outlet cover |
| CAS99 | chassis outlet filter |
| CAS24 | chassis self tapper |
| CAS101 | strengthening bar |
| CAS102 | M5 x 25mm pozi pan head screw |

*call for pricing and availability of all referenced parts

HANDLE ASSEMBLY



| ref # | item # | description |
|-------|--------------|------------------------------|
| 8 | 00-0800-0503 | M8 washer |
| 9 | 00-0816-0111 | M8 x 16LG hex head set screw |
| 10 | 02-3151-0000 | clip |
| 11 | 02-3152-0000 | cable strain relief bracket |
| 12 | CAS22 | gear dog spring |
| 13 | CAS23 | self tapper |
| 14 | CAS24 | self tapper |
| 15 | CAS25 | handle gasket, rubber |
| 16 | 02-3520-0000 | grommet, diaphragm |
| 17 | 02-3523-0000 | bolt |
| 19 | 02-4492-0000 | splash proof cover |
| 20 | CAS27 | cable winder |
| 21 | CAS28 | cable winder spring |
| 22 | CAS29 | control box front |
| 23 | CAS30 | control box rear |
| 24 | 03-6089-0067 | gear operating lever |

| ref # | item # | description |
|------------------------|--------------|---------------------------|
| 25 | 03-6090-0067 | trigger |
| 27 | CAS33 | interlock button |
| 28 | CAS34 | cord retainer |
| 29 | CAS35 | handle gear |
| 30 | CAS36 | gear dog |
| 32 | CAS110 | aluminum knuckle pressure |
| 34 | CAS38 | gear rod |
| 35 | 03-7927-0000 | oval handle tube |
| 37 | CAS39 | cord inlet box |
| 38 | 04-0237-0000 | cable clamp bar |
| 39 | CAS40 | schulte switch |
| 42 | CAS43 | rocker switch |
| NOT ILLUSTRATED | | |
| | 04-3246-0000 | supply cord |

*call for pricing and availability of all referenced parts