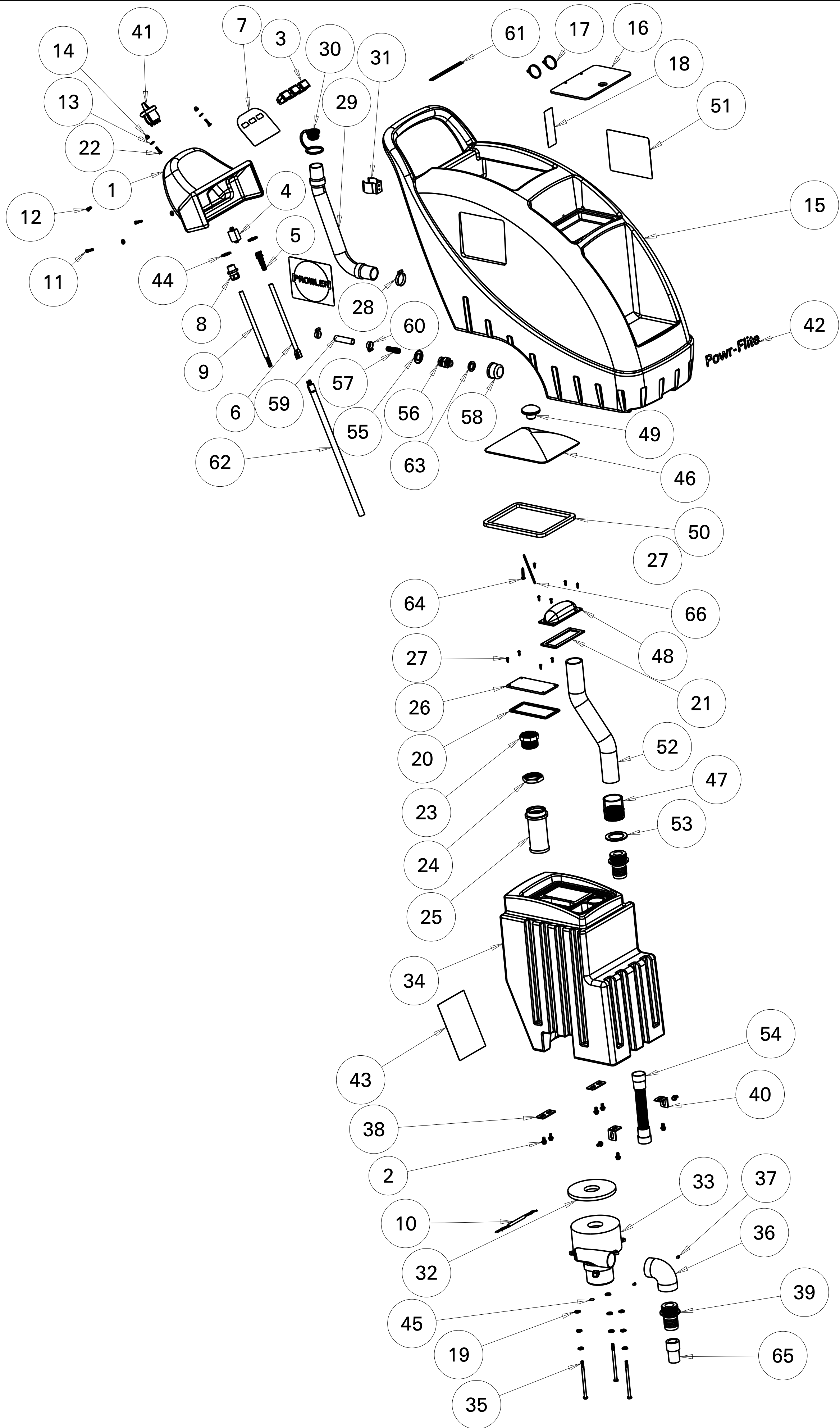


QTY	DESCRIPTION	PART NO.	QTY
1	HOUSING CONTROL	X9043REPRO	1
2	1/4-20 X 1/2" SERRATED HEX	X8209S	8
3	ROCKER SWITCH	X9007	3
4	CIRCUIT BREAKER 2.5 AMP	X1192	1
5	PLASTIC STRAIN RELIEF **	X8008P	1
6	12/3 SJTW YELLOW CORD **	72315A	1
7	LABEL 3 HOLE SWITCH PANEL	X1012	1
8	STRAIN RELIEF **	PD8	1
9	CABLE 14/6 **	X9067	1
10	WIRING HARNESS INCLUDES PART WITH **	X9841	1
11	SCREW 10-32 X 7/8" SOC	X9135	2
12	SCREW 10-32 X 1/2 PHIL 18-8 SS	71651A	1
13	WASHER #10 FLAT S/S	7CM003	4
14	NUT CAP 10-32	7DN004	2
15	HOUSING SOLUTION	X9042REPRO	1
16	LID SOLUTION TANK	X9081	1
17	CABLE TIE 11" BLACK	X8150	2
18	LABEL, TANK CAPACITY	X9125-1	1
19	WASHER ID.299 OD.622 THK.055	X8858	9
20	GASKET COVER SCE	X9084	1
21	GASKET SMALL DOME	X9071	1
22	SCREW 10-32 X 3/4" PHIL SS	7BR005	2
23	BUSHING 1-1/2" X 1-1/4" PVC	X9075	1
24	NUT LOCK 1-1/2"	PX46	1
25	FLOAT CAGE WITH HEAVY BALL	X9053	1
26	FLOAT COVER	X9080	1
27	SCREW #6 X 1/2 PHIL SS	X8261SS	9
28	CLAMP 1-1/2 WORM GEAR SS HEX	7DL005	1
29	DRAIN HOSE	PAS37	1
30	PLUG DRAIN HOSE	PAS36	1
31	CLIP SPRING	72173A	1
32	MOTOR GASKET	X9120-1	1
33	VACUUM 3-STAGE 115V	72365B	1
34	HOUSING RECOVERY	X9041REPRO	1
35	1/4-20 X 4-1/2" BOLT	X8288	3
36	FITTING PLASTIC ELBOW 90	PX11A	1
37	SCREW 1/4-20 X 3/16 SOC	X8222	2
38	BRACKET TANK MOUNT	X9085	2
39	VAC INLET STRAIGHT	PX25	2
40	BRACK TANK MOUNT 90 DEGREES	X9086	2
41	ROCKER SWITCH WITH PADDLE	X9200	1
42	POWR-FLITE LABEL	X8400A	1
43	OPERATING INSTRUCTION LABEL	X9057	1
44	NUT, LOCK, 1/2" STEEL CONDUIT	X8008N	2
45	LABEL, GROUND SYMBOL	X9214	1
46	DOME LID AND GASKET	X9034-C	1
47	COUPLER PLASTIC 1-1/2" SLIP	PX63	1
48	SMALL DOME	X9033	1
49	KNOB LARGE DOME LID	X9110	1
50	LARGE DOME SPACER GASKET	X9120-2	1
51	LABEL, PROWLER	X9206	2
52	VACUUM STACK ASSEMBLY	X9129	1
53	VALVE GASKET	PX14A	1
54	VAC HOSE 1.5" x 21"	X9092	1
55	WASHER 3/4" NEOPRENE-BOND	72274A	1
56	FITTING, BRASS, BULKHEAD 3/4"	PX48	1
57	BARB 1/2 HOSE 1/4 MALE	7AT004	1
58	PUMP PROTECTION FILTER SLS 1/2"	X9294	1
59	HOSE 1/2" WIRE REINFORCED 21" LONG	70079C	1
60	CLAMP 1/2 WORM GEAR STAINLESS HEX	7DL008	2
61	BRUSH WARNING LABEL	X9134	1
62	14/3 SJTW 50' YELLOW EXTENSION CORD	32217	1
63	GASKET FIBER 1.125 OD X .75 ID	PX48G	1
64	SCREW 10-24 X 1/2" PHIL	7BS001	1
65	EXPANDER CUFF 1-1/4" TO 1-1/2" GRAY	K1123	1
66	CHAIN FOR LID	X9068	1



REV	DATE	ECN	DESCRIPTION	BY	MATL	SEE PARTS	FINISH	SEE PARTS
01	11/8/13		REDRAWN IN CREO	VK	DWN VK	DATE 11/8/13	SCALE 1:8	SHEET 1 of 10
02	5/6/14	0839	REPLACED SCREW WITH SAINLESS STEEL SCREW	VK		X.X ± 0.02 IN X.XX ± 0.01 IN X.XXX ± 0.005 IN ANGLES ±0° 30"	TACONY CORPORATION CLAIMS PROPRIETARY RIGHTS IN THE MATERIAL DISCLOSED HEREIN. THIS DRAWING IS ISSUED FOR ENGINEERING INFORMATION ONLY. IT MAY NOT BE REPRODUCED, NOR MAY THE INFORMATION HEREIN BE USED FOR MANUFACTURING PURPOSES WITHOUT WRITTEN PERMISSION FROM TACONY CORP.	
03	8/6/14	0885	REM OVED PART X9034, X9124 ADDED X9034-C	VK		BREAK SHARP EDGES TO 0.010		
04	2/17/15	0924	NEW CIRCUIT BREAKER AND RECTIFIER	VK				

POWR-FLITE
COMMERCIAL FLOOR CARE EQUIPMENT

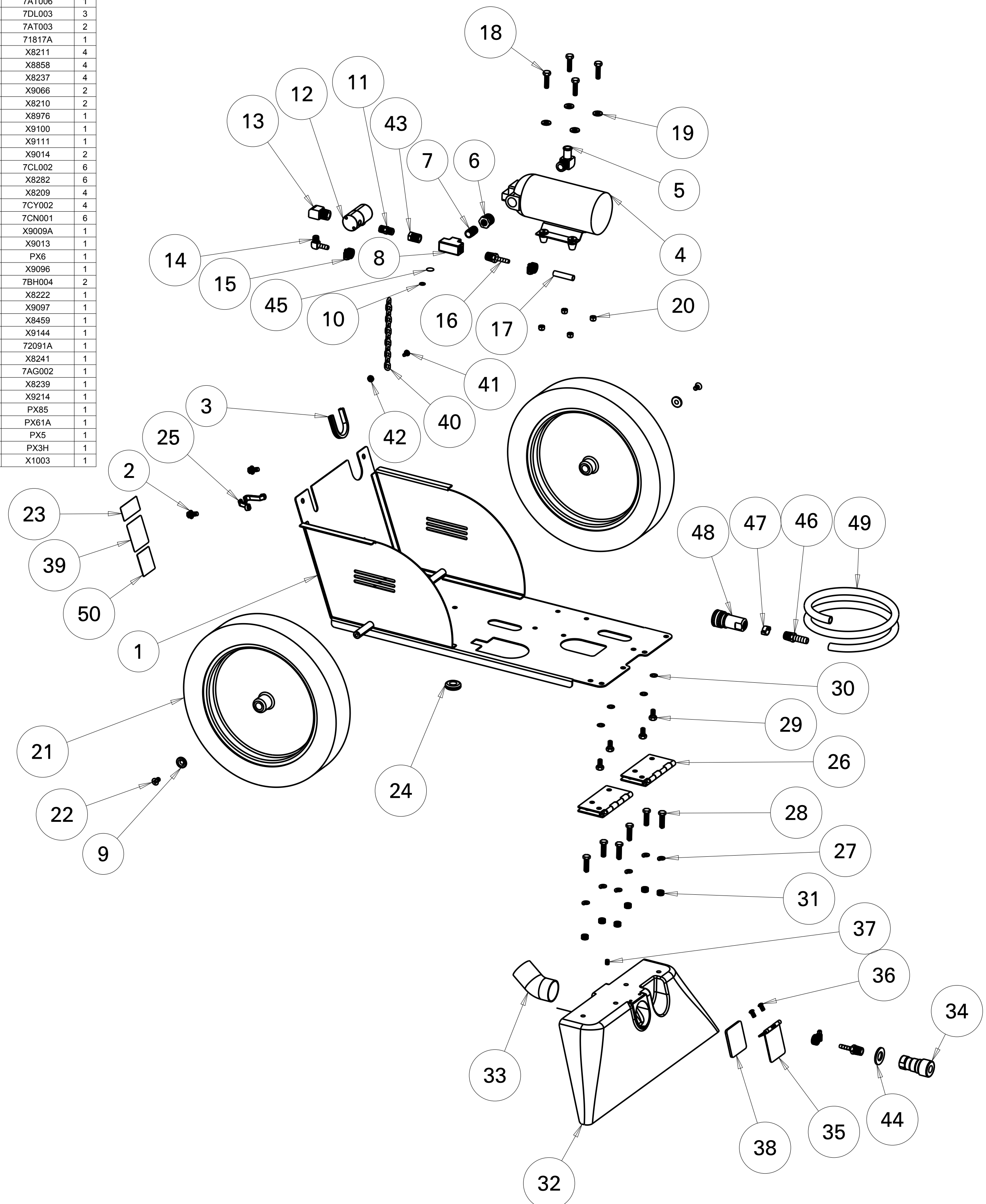
3101 Wichita Court
Fort Worth, TX 76140-1755

DESCRIPTION SELF CONTAINED 9 GALLON TANKS

REV MODEL: 02 REV DRAWING: 04

PN: PFX900S

DESCRIPTION	PART NO.	QTY	
1	MAIN CHASSIS WELDMENT	X9012	1
2	1/4-20 X 1/2" SERRATED HEX	X8209S	2
3	GROMMET U-CHANNEL	X9109	1
4	PUMP 100 PSI	SF814	1
5	ELBOW 1/2 H - 3/8 MPT	71507A	1
6	REDUCER 3/8" TO 1/4"	PC20	1
7	1/4" CLOSE NIPPLE BRASS	PX32	1
8	TEE UNION 1/4 NPT	7AV001	1
9	WASHER, COUNTERSUNK, AXLE	X8020	2
10	WASHER #10 INT TOOTH, LOCK SS	7CY001	1
11	NIPPLE HEX 1/8" X 1/8"	7CX001	1
12	SOLENOID	SW132	1
13	ELBOW STREET 1/8"	SW139	1
14	BARB ELBOW	7AT006	1
15	CLAMP 1/4 WORM GEAR SS	7DL003	3
16	BARB HOSE 1/4 H - 1/4 M	7AT003	2
17	HOSE 1/4 BRAIDED 12" LONG	71817A	1
18	BOLT 1/4-20 X 1"	X8211	4
19	WASHER ID.299 OD.622 THK.055	X8858	4
20	NUT 1/4-20 LOCK NYLON INSERT	X8237	4
21	WHEEL 12 X 1-3/4	X9066	2
22	SCREW 1/4-20 X 1/2" PHIL	X8210	2
23	LABEL, WARNING	X8976	1
24	1/2" GROMMET	X9100	1
25	CORD CLAMP	X9111	1
26	TANK HINGE	X9014	2
27	WASHER 1/4" SPLIT LOCK	7CL002	6
28	BOLT 1/4-20 X 1" HEX	X8282	6
29	1/4-20 X 1/2 HEX CAP SCREW	X8209	4
30	WASHER 1/4 TOOTH LOCK	7CY002	4
31	NUT 1/4-20 HEX	7CN001	6
32	VACUUM SHOE	X9009A	1
33	VAC SHOE TUBE	X9013	1
34	COUPLER FEMALE 1/4"	PX6	1
35	FLIP DPPR/HINGE AND SPRING	X9096	1
36	10-32 x 3/8 PHIL PAN SS	7BH004	2
37	SCREW 1/4-20 X 3/16 SOC	X8222	1
38	GASKET FLIP DOOR	X9097	1
39	LABEL, SERIAL NUMBER, PLAIN	X8459	1
40	CHAIN	X9144	1
41	10-24 3/8" PAN HEAD SCREW	72091A	1
42	10-24 HEX NUT STAINLESS STEEL	X8241	1
43	BUSHING 1/4 - 1/8 NPT	7AG002	1
44	WASHER 1.5" OD .4" ID	X8239	1
45	LABEL, GROUND SYMBOL	X9214	1
46	1/4" X 3/8" NPT MALE/MALE BARB	PX85	1
47	EAR CLAMP 18.5mm	PX61A	1
48	FITTING QUICK CONNECT 1/4	PX5	1
49	HOSE 3/8" ID	PX3H	1
50	MADE IN THE USA LABEL	X1003	1



REV	DATE	ECN	DESCRIPTION	BY	MATL	SEE PARTS	FINISH	SEE PARTS
01	11/8/13		REDRAWN IN CREO	VK	DWN	VK	DATE 11/8/13	SCALE 1:5 SHEET 2 of 10
02	5/6/14	0839	REPLACED SCREW WITH SATINLESS STEEL SCREW	VK			X.X ± 0.02 IN X.XX ± 0.01 IN X.XXX ± 0.005 IN ANGLES ± 0° 30"	TACONY CORPORATION CLAIMS PROPRIETARY RIGHTS IN THE MATERIAL DISCLOSED HEREIN. THIS DRAWING IS ISSUED FOR ENGINEERING INFORMATION ONLY. IT MAY NOT BE REPRODUCED, NOR MAY THE INFORMATION HEREIN BE USED FOR MANUFACTURING PURPOSES WITHOUT WRITTEN PERMISSION FROM TACONY CORP.
03	8/6/14	0885	REMOVED PART X9034, X9124 ADDED X9034-C	VK				
04	2/17/15	0924	NEW CIRCUIT BREAKER AND RECTIFIER	VK			BREAK SHARP EDGES TO 0.010	

POWER-FLITE
COMMERCIAL FLOOR CARE EQUIPMENT

3101 Wichita Court
Fort Worth, TX 76140-1755

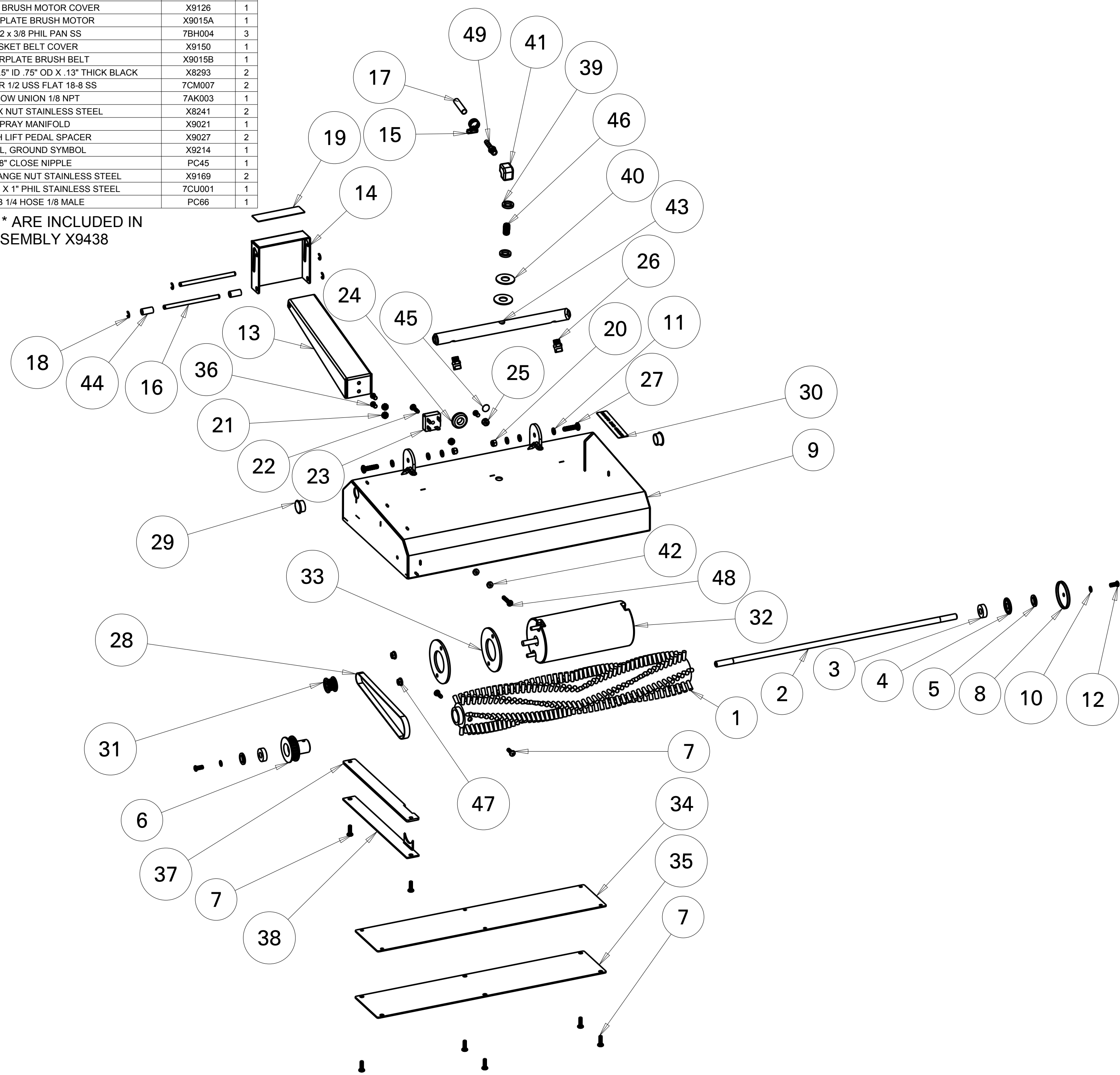
DESCRIPTION SELF CONTAINED 9 GALLON BASE

REV MODEL: 01 REV DRAWING: 04

PN: PFX900S

REV	DATE	ECN	DESCRIPTION	BY	MATL	SEE PARTS	FINISH	SEE PARTS
1			BRUSHROLL 3" DIA		X9070			
2			BRUSH AXLE *		X9017			
3			BEARING OD .8750 ID .3750 32000 RPM MAX		X9001			
4			BRUSH BEARING SHIELD *		X9019			
5			BRUSH BEARING SPACER *		X9018			
6			DRIVE PULLEY		X9117			
7			SCREW 10-32 X 5/8 * SS		X9118			
8			BRUSH TREAD GUARD *		X9020			
9			BRUSH HOUSING		X9015			
10			WASHER #10 INT TOOTH, LOCK SS		7CY001			
11			WASHER 1/4" ID FLAT .059" THICK NYLON		72241A			
12			SCREW 10-32 X 1/2 PHIL 18-8 SS		71651A			
13			BRUSH LIFT BRACKET		X9107			
14			BRUSH LIFT PEDAL		X9026			
15			CLAMP 1/4 WORM GEAR SS		7DL003			
16			BRUSH FOOT PEDAL PIN		X9030			
17			HOSE 1/4 BRAIDED 12" LONG		71817A			
18			E RING 1/4" SS		X9114			
19			SAFETY WALK TAPE 1" WIDE BLACK		X9122			
20			NUT 1/4-20 LOCK NYLON INSERT		X8237			
21			NUT 10-32 KEPS SS		7BF008			
22			SCREW 10-32 X 3/4" PHIL SS		7BR005			
23			RECTIFIER 1000V 35 AMP		X1193			
24			1/2" GROMMET		X9100			
25			NUT 10-32 LOCK SS		X8830			
26			MINATURE NOZZLE AND BODY 1/8 NPT #2 95 DEGREES		X9139			
27			SCREW 1/4-20 X 1" PHIL SS		7CU003			
28			DRIVE BELT		X9004			
29			3/4" LOCKING HOLE PLUG		X9174			
30			SUPERIOR EDGE CLEANUNG LABEL		X9128			
31			DRIVE PULLEY 12 TOOTH		X9116			
32			MOTOR 120 VDC .25 HP		X9002			
33			SPACER MOTOR		X9099			
34			GASKET BRUSH MOTOR COVER		X9126			
35			COVERPLATE BRUSH MOTOR		X9015A			
36			10-32 x 3/8 PHIL PAN SS		7BH004			
37			GASKET BELT COVER		X9150			
38			COVERPLATE BRUSH BELT		X9015B			
39			NYLON WASHER .5" ID .75" OD X .13" THICK BLACK		X8293			
40			WASHER 1/2 USS FLAT 18-8 SS		7CM007			
41			ELBOW UNION 1/8 NPT		7AK003			
42			10-24 HEX NUT STAINLESS STEEL		X8241			
43			SPRAY MANIFOLD		X9021			
44			BRUSH LIFT PEDAL SPACER		X9027			
45			LABEL, GROUND SYMBOL		X9214			
46			1/8" CLOSE NIPPLE		PC45			
47			10-32 HEX FLANGE NUT STAINLESS STEEL		X9169			
48			SCREW 10-24 X 1" PHIL STAINLESS STEEL		7CU001			
49			BARB 1/4 HOSE 1/8 MALE		PC66			

ALL PART WITH * ARE INCLUDED IN BRUSHROLL ASSEMBLY X9438



REV	DATE	ECN	DESCRIPTION	BY	MATL	SEE PARTS	FINISH	SEE PARTS
01	11/8/13		REDRAWN IN CREO	VK	DWN VK	DATE 11/8/13	SCALE 1:5	SHEET 3 of 10
02	5/6/14	0839	REPLACED SCREW WITH STAINLESS STEEL SCREW	VK				
03	8/6/14	0885	REMOVED PART X9034, X9124 ADDED X9034-C	VK				
04	2/17/15	0924	NEW CIRCUIT BREAKER AND RECTIFIER	VK				

POWR-FLITE
3101 Wichita Court
Fort Worth, TX 76140-1755

COMMERCIAL FLOOR CARE EQUIPMENT

DESCRIPTION SELF CONTAINED 9 GALLON BRUSH

REV MODEL: **03** REV DRAWING: **04**

PN: **PFX900S**

TACONY CORPORATION CLAIMS PROPRIETARY RIGHTS IN THE MATERIAL DISCLOSED HEREIN. THIS DRAWING IS ISSUED FOR ENGINEERING INFORMATION ONLY. IT MAY NOT BE REPRODUCED, NOR MAY THE INFORMATION HEREIN BE USED FOR MANUFACTURING PURPOSES WITHOUT WRITTEN PERMISSION FROM TACONY CORP.