


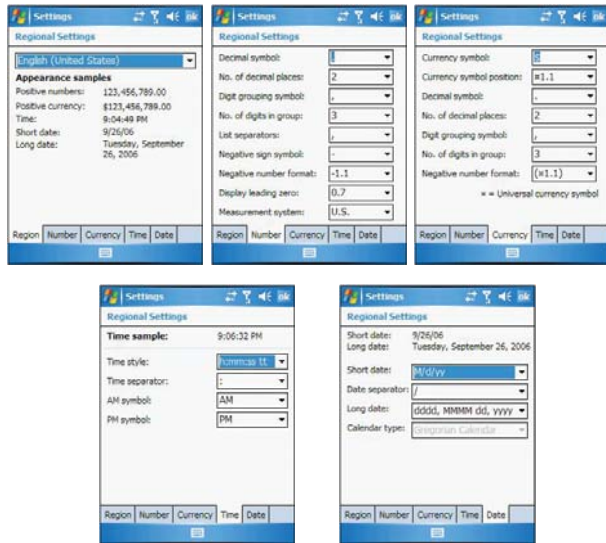
 **Power**

View power level for both the main and backup battery. To minimize power consumption, you can define settings for the auto-off function and the processor's operation speed.



 **Regional Settings**

Set default number and time display formats and other related options.

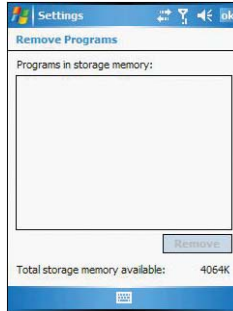


6 Customizing Your MC35

Adjusting settings

Remove Programs

Remove programs from storage memory.



Screen

Set the viewing orientation and text size setting. You can also recalibrate screen and enable the ClearType feature.



SIM Manager

Manage all contacts stored on your SIM card.



Idx	Name	Phone
3	JONATHAN ...	0922427838
49	JONATHAN ...	09177928515
57	JOSEPH NG ...	0936074003
51	KEVIN WAN...	0953642563
52	LHEN CHO ...	0936682907
53	MARIAN CH...	0955953965
83	MARIAN HO...	0266388918
76	MARY ONG ...	0066391789..
54	MARYANNE ...	0931206037
55	MECO KH ...	073326257
56	MICHELLE C...	0066391750...
2	MYLA CHUN...	0911959946
87	MYLA DE L...	0958803591
94	Myla house	0226900208
89	NET ANG ...	0936583833
59	OHIO £	0227402537



System Information

Displays your device's hardware and software information.

System Information	
Item	Information
Model	MC35
Processor Type	Intel(R)PXA270
Processor Speed	416MHz
RAM Size	64MB
ROM Size	128MB
ROM Version	X04(09060600EN)
Language	English
Wireless Attendance	Wireless and Blue...
UUID	436C656D656E7...
MAC Address	0800FFFFFFFF
Application	WiFi disable NONE

Navigation: Back, Home, Forward

Menu: General, Radio

System Information	
Item	Information
Radio Stack Driver...	SIEMENS MC75 R...
IMEI	355634002246053

Navigation: Back, Home, Forward

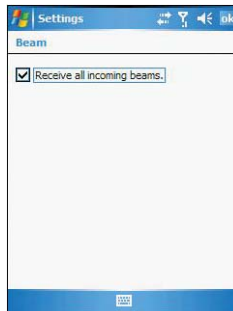
Menu: General, Radio

Connections tab



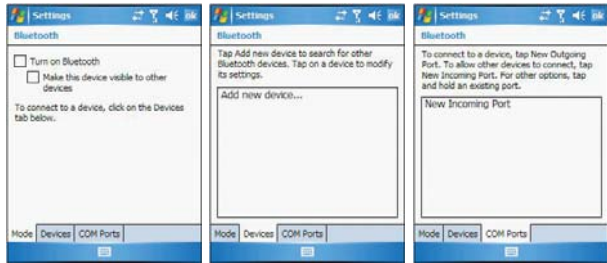
Beam


Define settings for the beam function.



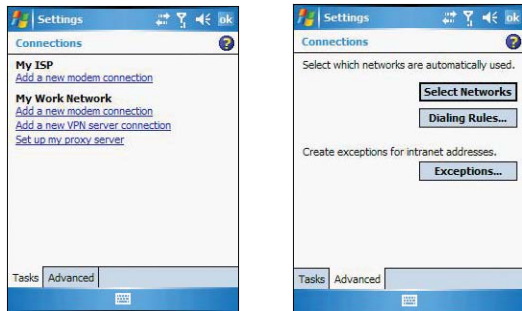
 **Bluetooth**

Use this option to configure the device's Bluetooth settings.



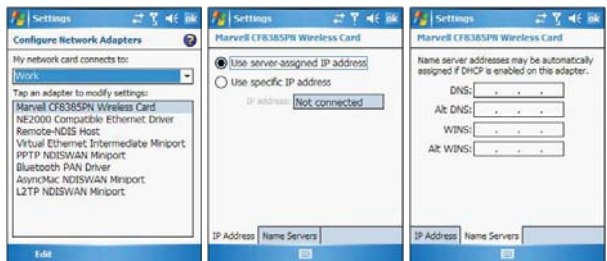
 **Connections**

Adjust settings for connecting your ISP or to a local network.



 **Network Cards**

Customize settings for your device's network adapter.

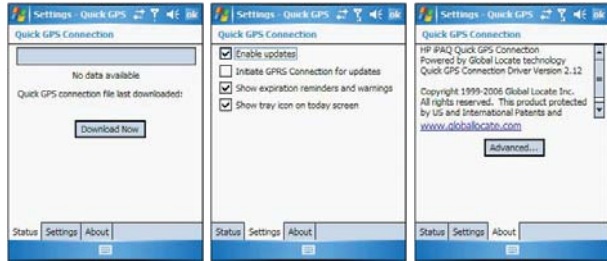


6 Customizing Your MC35

Adjusting settings

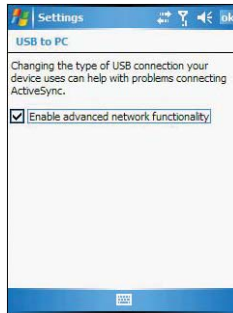
Quick GPS Connection

Enable and customize settings for the GPS connection utility.



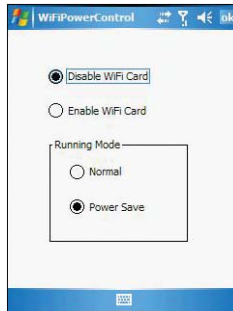
USB to PC


Enable or disable the enhanced network connectivity.




Wireless Control

Available for MC3574 models, allow you to customize wireless network connection settings and enable the WiFi (Wireless Fidelity) networking.



To configure the wireless network connection settings, tap **Network Cards** .

 **Wireless Manager**

Enable or disable wireless features and customize device Bluetooth and phone settings.





Adding programs

Adding programs to your device

Programs bundled with your device at the factory are stored in ROM (read-only memory). You cannot remove these programs, and you'll never accidentally lose ROM contents. ROM programs can be updated using special installation programs with a *.xip extension. All other programs and data files installed to your device after factory installation are stored in RAM (random access memory). You can install any program created for your device, as long as it has enough memory. The most popular place to find software for your device is on the Pocket PC Web site <http://www.microsoft.com/windowsmobile/pocketpc/default.mspx>. You can add programs to your device either by using ActiveSync or by downloading the program from the Internet.

To add programs using ActiveSync:

Before installing a program on your device, you must first install the appropriate software for your device on your computer.

- 1 Determine your device and processor type so that you know which version of the software to install.
 - (a) Tap , then **Settings**.
 - (b) On the System tab, tap **About** .
 - (c) On the Version tab, make a note of the processor information.
- 2 Download the program to your computer (or insert the CD or disk that contains the program into your computer).


You may see a single *.xip, *.exe, or *.zip file, a Setup.exe file, or several versions of files for different device types and processors. Be sure to select the program designed for a Pocket PC and your device's processor type.

NOTE: Read any installation instructions, Read Me files, or documentation that come with the program. Many programs provide special installation instructions.



- 3 Connect your device to your computer.

6 Customizing Your MC35

Adding programs

- 4 Double-click the *.exe file.
 - If the file is an installer, the installation wizard will begin. Follow the directions on the screen. Once the software has been installed on your computer, the installer will automatically transfer the software to your device.
 - If the file is not an installer, you will see an error message stating that the program is valid but it is designed for a different type of computer. You will need to move this file to your device. If you cannot find any installation instructions for the program in the Read Me file or documentation, use the ActiveSync Explore button to copy the program file to the Program Files folder on your device. For more information on copying files using ActiveSync, see page 28.
- 5 Once installation is complete, tap  **Programs**, then the program icon to launch it.

To add a program directly from the Internet:

- 1 Determine your device and processor type so that you know which version of the software to install.
 - (a) Tap , then **Settings**.
 - (b) On the System tab, tap **About** .
 - (c) On the Version tab, make a note of the processor information.
- 2 Download the program to your device straight from the Internet using Internet Explorer Mobile.

You may see a single *.xip, *.exe or *.zip file, a Setup.exe file, or several versions of files for different device types and processors. Be sure to select the program designed for a Pocket PC and your device's processor type.



NOTE: Read any installation instructions, Read Me files, or documentation that comes with the program. Many programs provide special installation instructions.

- 3 Tap the file, such as a *.xip or *.exe file. The installation wizard will begin.
- 4 Follow the onscreen instructions.

Adding a program to the Start menu


You can choose what program icons should appear on the menu based on which ones you use most often.


To add a program to the Start menu program using Settings:

- 1 Tap , then **Settings**.
- 2 On the Personal tab, tap **Menus** .
- 3 Select the check box for the programs you wish to add.


If you do not see the program you want, you can either use File Explorer on your device to move the program to the Start Menu folder, or use ActiveSync on your computer to create a shortcut to the program and place the shortcut in the Start Menu folder.

To add a program to the Start menu program using File Explorer on your device:



- 1 Tap , **Programs**, then **File Explorer** .
- 2 Tap the My Device icon (tap the folder list, labeled My Documents by default, and then My Device to see a list of all folders on your device).
- 3 Open the path: **Windows | Start | Programs**.
- 4 Tap and hold the program you want to add to the menu, then tap **Cut** on the pop-up menu.
- 5 Open the path: **Windows | Start Menu**.
- 6 Tap and hold a blank area of the window, then tap **Paste** on the pop-up menu.

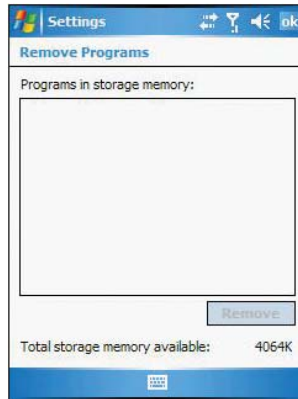
- 7 The program will now appear on the  menu.

To add a Start menu program using ActiveSync on your computer:

- 1 In the ActiveSync on your computer, click **Explore** to explore your device's files and locate the program.
- 2 Right-click the program, and then click **Create Shortcut**.
- 3 Move the shortcut to the Start Menu folder in the Windows folder.
The shortcut now appears on the  menu.
For more information on using ActiveSync, see ActiveSyncHelp on your computer.

Removing programs

- 1 Tap  then **Settings**.
- 2 On the System tab, tap **Remove Programs** .



- 3 Tap the program you wish to remove.
- 4 Tap the **Remove** button.

If the program does not appear in the list of installed programs, use File Explorer on your device to locate the program:

- 1 Tap and hold the program.
- 2 Tap **Delete** on the pop-up menu.

7 Getting Connected

You can use your MC35 to exchange information with other mobile devices and connect to your computer, a network, or the Internet. You have the following connection options:



- Use the infrared (IR) port on your device to send and receive files from another IR-enabled device.
- Use Bluetooth to beam information such as files, appointments, tasks, calendar events and contacts, between devices that have Bluetooth capabilities. You can also use Bluetooth to print to a Bluetooth printer and create a connection between your device and a Bluetooth phone to use the phone as a modem.
Once connected to the another Bluetooth enabled device or computer, you can locate and use any of the services available on the device.
- Use WiFi networking to connect to a computer, access the Internet, send and receive email and files.
Your wireless service provider will provide the needed information for a successful connection.
- Connect to your mobile Internet service provider (ISP). Once connected, you can send and receive email messages by using Messaging and view Web WAP pages by using Internet Explorer Mobile.
The communication software for creating an ISP connection is already installed on your device. Your service provider will provide software needed to install other services, such as paging and fax services.
- Connect to the virtual private network (VPN) at the company or organisation where you work. Once connected, the added security of a VPN means that you can access the full resources of your company's network. For example, you can use File Explorer to access the files of computers on that network.

- 1 Infrared connection
- 2 Bluetooth connection
- 3 WiFi connection
- 4 Internet connection
- 5 Network connection
- 6 Email server connection

Infrared connection

Using infrared, you can send and receive information, such as contacts and appointments from another IR-enabled device.

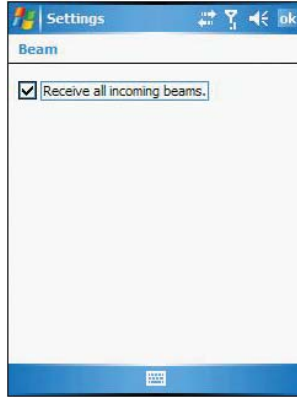
Activating the IR connection

- 1 Tap , then **Settings**.
- 2 On the Connections tab, tap **Beam** .

7 Getting Connected


Infrared connection

- 3 Tap the Receive all incoming beams check box.



- 4 Tap **OK**.

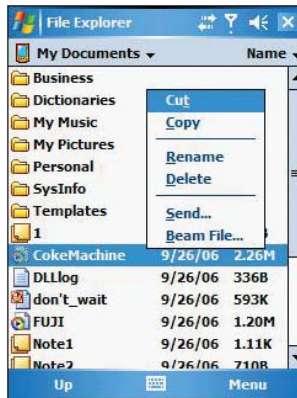
Sending information

- 1 Switch to the program where you created the item you want to send and locate the item in the list.
- 2 Align the IR port  of your device with that of the IR-enabled device so that they are unobstructed and within a close range.
- 3 Tap and hold the item, then tap **Beam File** on the pop-up menu.

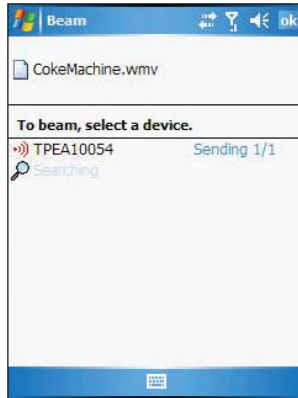
-or-

Send items (but not folders) using File Explorer.

- Tap and hold the item you want to send, then tap **Beam File** on the pop-up menu.



- 4 Select the device, then tap the **Tap to send** link.



Receiving information

- 1 Align the IR port \llcorner of your device with that of the IR-enabled device so that they are unobstructed and within close range.
- 2 Have the owner of the other device send the information to you. Your device will automatically receive it.



- 3 On the Receiving Data callout, tap **Yes**.

7 Getting Connected

Bluetooth connection

Bluetooth connection

Your device allows you to connect to a Bluetooth-enabled device, such as a handheld, headset, computer, or GPS accessory. Once connected you can do the following:

- Beam files and information in Calendar, Contacts, Notes, Tasks, Excel Mobile, Word Mobile, PowerPoint Mobile, and Pictures & Videos programs , to other Bluetooth-enabled device.
- Transfer an outgoing call to a Bluetooth-enabled headset.
- Wirelessly print files from a Bluetooth-enabled printer.
An additional software needs to be installed on your device to enable you to print files to a Bluetooth-enabled printer. Contact your local dealer for more information.
- Wirelessly listen to audio files or locate and use services on a Bluetooth-enabled device.

IMPORTANT: Ensure that the two devices have Bluetooth turned on, discoverable, and within close range.

To activate Bluetooth connection

You can activate Bluetooth connection by using the followings ways:

Using Wireless Manager:

- 1 On the Today screen, tap the Wireless Manager icon.

Tap to launch the
Wireless Manager.





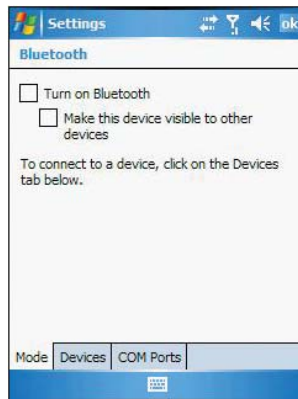
- 2 On the Wireless Manager screen, tap Bluetooth to turn on the Bluetooth function.




You can tap Menu on the command bar to configure the Bluetooth settings.

Using the  menu:

- 1 Tap , then **Settings**.
- 2 On the Connections tab, tap **Bluetooth** .
- 3 On the Mode tab, select all the check boxes.




- 4 Tap **OK**.
An active Bluetooth connection is indicated by  at the top of the screen.

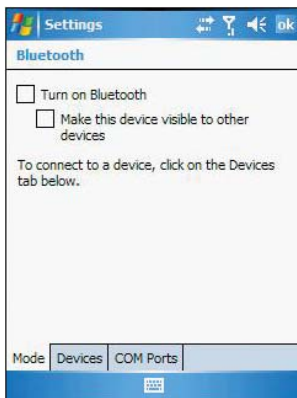
NOTE: Deactivate the Bluetooth feature when you do not plan to use it for an extended time.

7 Getting Connected

Bluetooth connection

Creating a partnership

- 1 On the Connections tab, tap **Bluetooth** .



- 2 On the Devices tab, tap **Add new device**.



Your device will search for other devices with Bluetooth capabilities and displays them in the device list.



- 3 Tap the name of the device in the list, then tap **Next**.
- 4 In the "Select services to use from this device" list, select a service.
- 5 If you want to use a passkey, enter the alphanumeric passkey , then tap **Next**.
The passkey is recommended for enhanced security. Your passkey must be between 1 to 16 alphanumeric characters.
-or-
You can leave the passkey blank, then tap **Next**.
- 6 Enter the same passkey on the other device.
- 7 In the **Display Name**, enter a new name for the device.
- 8 Tap **Finish**.
- 9 Tap **OK**.

Sending information

- 1 Switch to the program where you created the item you want to send and locate the item in the list.
- 2 Do any one of the following:
 - Tap and hold the item, and then tap **Beam File** on the pop-up menu.
 - Using Pictures & Videos, tap and hold a thumbnail to display a pop-up menu of available actions, then tap **Send Image via Bluetooth**.

7 Getting Connected

Bluetooth connection

- Using File Explorer, tap and hold an item (but not folders), select **Beam File** on the pop-up menu.




- 3 Select the Bluetooth device, then tap the **Tap to send** link.

Receiving information



- 1 Turn on the Bluetooth function.
- 2 Have the owner of the other device send the information to you. Your device will automatically receive it.



- 3 On the Bluetooth callout, tap **Yes**.
A Bluetooth connection with your device is indicated by  at the top of the screen.

Making a call from a headset

For detailed instructions, refer to page 59.

For detailed information on how to use Bluetooth, tap , then **Help** .

WiFi connection

With the device's integrated WiFi (available for MC3574 models), you can scan for existing wireless network access points or hot spots. Wireless network access points or hot spots can be found in homes and office or public areas such as inside airports, restaurants, coffee shops, hotels, or other public areas. Using WiFi networking, you can connect to a computer, access the Internet, send and receive email and files.


A wireless network can be added either when the network is detected or by manually entering settings information.

NOTE: WiFi access in some areas may require a separate purchase of a service contract with a wireless service provider. You can check with a WiFi service provider for detailed information.

Enabling WiFi connection

Do either of the following:

Using the Wireless Control icon on the Today screen.



- 1 On the Today screen, tap and hold **Wireless Control** , located on the lower right corner of the screen.
- 2 Select **WiFi Card**, then tap **Enable**.

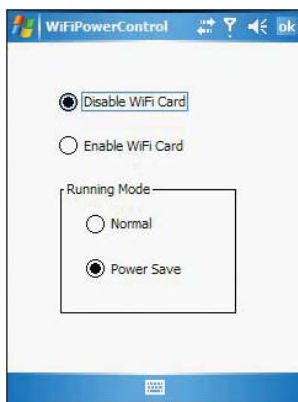


7 Getting Connected

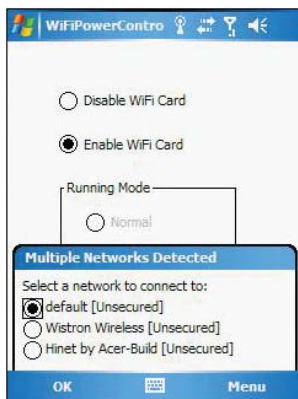
WiFi connection

Using the Settings menu



- 1 Tap  **Settings**, then **Connections** tab.
- 2 Tap **WiFi Card Setting** .
- 3 Select **Enable WiFi Card**, then tap **OK**.



If you are in a hot spot, the detected Wireless service will be displayed on the device.



- 4 Select the network you want to connect to.

For more information on how to configure the wireless network settings, tap , then **Help** .


Setting up a wireless network connection

A wireless network can be added either when the network is detected or by manually entering settings information. Before doing these steps, determine if authentication information is needed.

Before performing this procedure, make sure you have the following:

- Make sure that the Internet Protocol (TCP/IP) is installed on your computer.
- Make sure the network system and remote access server in your workplace supports TCP/IP protocol
- Make sure you have remote access account. Ask your network administrator for assistance on setting up a wireless connection.
- First establish ActiveSync partnership with the MC35 using USB or Bluetooth connection.

1 Enable wireless connection. Refer to "Enabling WiFi connection" on page 109 for more information.

1 Tap  **Settings**, then **Connections** tab.

2 Tap **Network Cards** .

3 Tap the **Wireless** tab.

4 If there are networks already detected, tap and hold network name, then select **Connect**.





If none, tap **Add New** and follow all onscreen instructions.

5 In the Network to access drop-down list, select from the following network connection options:

- All available
- Only access points
- Only computer-to-computer

6 When finished, tap **OK**.

For more information on how to configure the wireless network settings, tap , then **Help** .

7 Getting Connected

Internet connection

Internet connection

Your MC35 EDA allows you to connect to the Internet via GPRS (General Packet Radio Service). Once connected you can:



- Use Inbox to send and receive email messages
- Use Internet Explorer Mobile to access Web or WAP pages
- Use Windows Media Player 10 Mobile for Pocket PC to listen to streaming media

For more information on configuring your device's GPRS setting, contact your mobile ISP.

Network connection

If you have access to a network at work, you can send email messages, view Intranet pages, synchronize your device, and possibly access the Internet. You can connect to a network by creating a modem connection via a RAS account or use a network card to connect directly to an Ethernet network and access Internet, Intranet or download emails. Before you can create these connections, your network administrator will need to set up a RAS account for you. Your network administrator may also give you VPN settings.

Creating a modem connection to a network

- 1 Ask your network administrator for the following information:
 - Dial-up access telephone number
 - User name and password
 - Domain name
 - TCP/IP settings
- 2 Tap , then **Settings**.
- 3 On the **Connections** tab, tap **Connections** .
- 4 In the Connections window, tap the **Add a new modem connection** link, either in the My ISP or My Work Network list.
- 5 In the Make New Connection window, enter a name for the connection.
- 6 In the Select a modem list, select your modem type.

If your modem type does not appear, try re-inserting the modem card. If you are using an external modem that is connected to your device with a cable, select **Hayes Compatible on COM1**.
- 7 Tap **Next** to continue configuring your modem connection depending on the modem type you selected.

You need not change any settings in Advanced. Most ISPs now use a dynamically assigned address. If the ISP you are connecting to does not use a dynamically-assigned address, tap **Advanced**, then the **TCP/IP** tab, and enter the address. When finished, tap **OK**.
- 8 Tap **Finish** to create the new modem connection.

Email server connection



You can set up a connection to an email server so that you can send and receive email messages by using a modem or network connection and Inbox on your device. You can use multiple email accounts to receive your messages. For each email account you intend to use, first set up and name the email service. If you use the same service to connect to different mailboxes, set up and name each mailbox connection.



There are two types of email account that can be managed using your device.

- Microsoft Outlook
Using Microsoft Outlook, your Inbox is updated each time you sync with your computer or corporate email server.

- POP3/IMAP4
This includes email service from providers. These email accounts can be managed remotely using a wireless connection.

To set up an email account:

For an explanation on any of the setup screens, tap , then **Help** .

- 1 Tap , then **Messaging** .
- 2 Tap **Menu, Tools**, then **New Account**.
- 3 Select the email type from the Your e-mail provider drop-down list and tap **Next**.
- 4 Fill out the email address field, then tap **Next**.
This will initiate auto-configuration which attempts to connect your device to your email server and automatically download the necessary email connection settings. If auto-configuration is successful you can begin sending/receiving emails straight away. If unsuccessful you will need to manually enter the settings.
- 5 Fill out the following fields: Your Name, User name, Password.
- 6 Select the Save Password check box unless you want to be prompted when you get your mail.
- 7 Tap **Next**.
- 8 From the Account type drop-down menu, select the service type that your email provider supports (POP3 or IMAP4).
- 9 Fill out the Name field for your email account, then tap Next.
- 10 Enter your email provider's server name information for incoming and outgoing mail.
- 11 Tap **Finish**.

8 Microsoft Pocket Outlook

This chapter describes the Microsoft Pocket Outlook programs.

- Pocket Outlook Overview
- Calendar
- Contacts
- Tasks
- Notes

Pocket Outlook Overview



Microsoft Pocket Outlook includes Calendar, Contacts, Inbox, Notes and Tasks. You can use these programs individually or in tandem with each other. For example, email addresses stored in Contacts can be used to address email messages in Messaging.

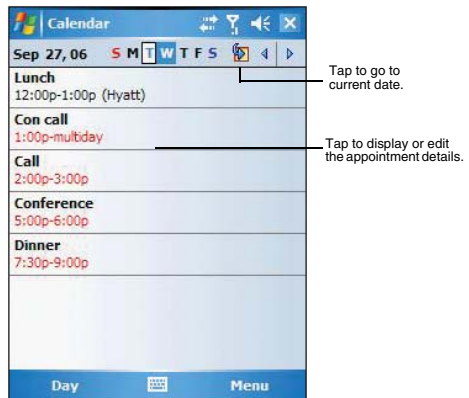
Using ActiveSync, you can synchronize information from Microsoft Outlook or Microsoft Exchange on your PC with your device. You can also synchronize this information directly with a Microsoft Exchange server. Each time you synchronize, ActiveSync compares the changes you made on your device and PC or server and updates both locations with the latest information. For information on using ActiveSync, see ActiveSync Help on your computer.

Calendar

Calendar enables you to conveniently manage your schedules and appointments or any other activities associated with a time and date. You can schedule appointments, including meetings and other events. Checking your appointments is easy using one of several views—Agenda, Day, Week, Month, and Year. Switch display views by tapping any of the view icons on the command bar.

To open Calendar:

- Tap , then **Calendar** .
- Calendar opens to today's schedule.



8 Microsoft Pocket Outlook Calendar

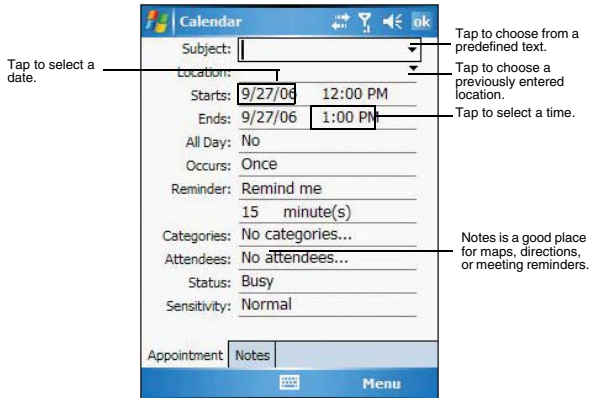
NOTE: You can customize the Calendar display, such as changing the first day of the week, by tapping **Menu**, then **Options**.

Scheduling an appointment

You can use Calendar to create an appointment schedule.

To create an appointment

- 1 If you are in Day or Week view, tap the desired date and time for the appointment.
- 2 Tap **Menu**, then **New Appointment**.



- 3 Using the soft keyboard, enter a description and a location.

To select a field, tap it.

- 4 If needed, tap the date and time to change them.

- 5 Enter other desired information.

Hide the input panel to see all available fields.

- 6 To add notes, tap the **Notes** tab.

You can enter text, draw, or create a recording.

- 7 After completing the details, tap **OK**.

If you select "Remind me" in an appointment, your device reminds you according to the options set in  **Settings, Personal** tab, **Sounds &**

Notifications



Viewing an appointment

You can view an appointment schedule in all views except for Year and Agenda view.

- To see the details of an appointment, tap the appointment.
- To see a pop-up menu of available actions for an appointment, tap and hold the appointment.
- In Agenda view, upcoming appointments are displayed in bold text.
- In Month view, the time of appointments are indicated by symbols. An upward triangle means a morning appointment; a downward triangle means an afternoon appointment. A solid square indicates an appointment that overlaps the noon day border.


Finding an appointment

There are two ways to find an appointment:

- Tap  **Programs**, then **Search** , enter the appointment name, select Calendar for the type, then tap **Search**.
- In Calendar, tap **Menu**, **Filter**, **All Appointments**, then select the check box opposite the type of appointment you want displayed.

Beaming an appointment

You can send an appointment to another IR or Bluetooth-enabled device by beaming it.

- 1 In Agenda, Day or Month view, tap and hold the appointment.
- 2 Tap **Menu**, then **Beam Appointment** on the pop-up menu.
- 3 Do either one of the following:
 - Select a Bluetooth-enabled device, then tap the **Tap to send** link.
 - Align the IR port  of your device with that of the other IR-enabled device so that they are unobstructed and within close range, then select the IR-enabled device and tap the **Tap to send** link.

Using the Calendar summary screen

When you tap an appointment in Agenda or Day view, a summary screen is displayed. To change the appointment, tap **Edit**.



Creating a meeting request

You can use Calendar to set up meetings with users of Outlook or Pocket Outlook. The meeting request is created automatically and is sent when you synchronize Inbox or when you connect to your email server. Indicate how you want meeting requests sent by tapping **Menu**, then **Options**.

To schedule a meeting:

- 1 Create an appointment.
- 2 In the appointment details, hide the input panel, then tap **Attendees**.
- 3 Select the check box before the email address of the contacts you want to send a meeting request to.
- 4 Tap **OK** twice—once to return to the appointment details page and another to save the appointment.

The meeting request is created automatically and placed in the Outbox folder.
- 5 Tap **OK**.



Contacts

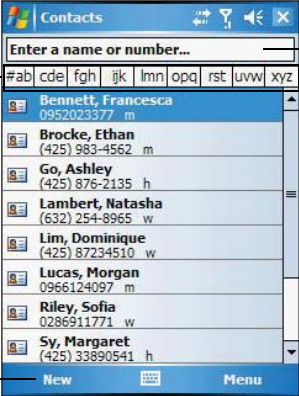
Keeping track of friends and colleagues

Contacts maintains a list of your friends' and colleagues' contact information. Using your device's infrared (IR) port, you can quickly share this list with other Windows-based, IR-enabled device users.

To open Contacts:

Do either of the following:

- On the Today screen, press the right soft button or tap Contacts.
- Tap , then **Contacts** .
Contacts opens to the contact list. To change the way information is displayed in the list, tap **Menu**, then **Options**.



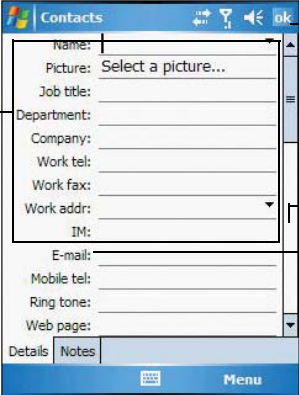
Enter the name of the contact you're searching for.

Tap one of the letter blocks to display only contact names starting with such letters.

Tap to create a new contact.

Creating a contact

- 1 Tap **New**.



Tap to return to the Contacts list (the new contact is saved automatically).

Tap a field to enter contact information.



Scroll to see more fields.

Notes is a good place for additional contact information.

- Using the soft keyboard, enter a name and other contact information.
Scroll down to see all available fields.
- To assign the contact to a category, scroll down, tap **Categories**, then select a category from the list.
- In the contact list, you can display contacts by category by tapping the pick list on the top-left corner of the screen.
- To add notes, tap the **Notes** tab.
- After completing the details, tap **OK**.

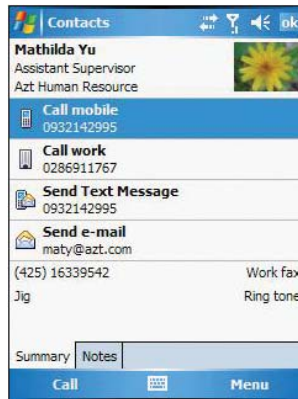
Finding a contact

There are several ways to find a contact. You can do any of the following. In the contact list:

- Using the QWERTY keypad, press the starting letter of the contact name.
- Tap one of the letter blocks displayed across the top of the screen.
- Use the Smart Lookup function by entering the first few letters of the contact you're looking for in the search box under the navigation bar. To show all contacts again, clear text from the box or tap the button to the right of the box.
- Tap the category pick list on the top-left corner of the screen and select the type of contact that you want displayed.
- To show all contacts, tap **Menu, Filter**, then **All Contacts**.
- To view a contact that is not assigned to a category, tap **Menu, Filter**, then **No Categories**.
- To view the names of companies your contacts work for, in the command bar, tap **View By**, then **Company**.
The number of contacts that work for that company displays to the right of the company name.
- Tap  **Programs**, then **Search** , enter the contact name, select **Contacts** for the type, then tap the **Go** button.

Using the Contacts summary screen

When you tap a contact in the contact list (or select it using the joystick), a summary screen displays. This is referred to as a contact card. To change the contact information, tap **Menu**, then **Edit**.



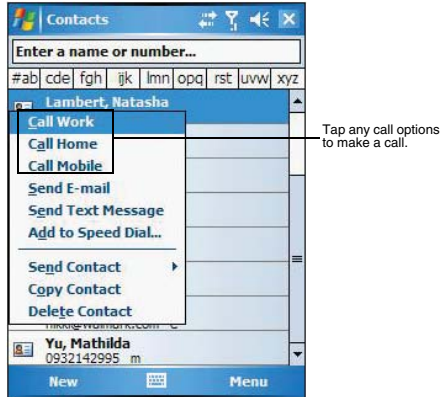
Calling a contact

You can make a call to a contact using either the contact list or the contact card.

To make a call from the contact list:

There are several ways to make a call from the contact list.

- Using commands in the pop-up menu
 - (a) Tap and hold a contact to display a pop-up menu of actions.



- (b) Tap any of the Call options to make a call.
- Using the Contact list abbreviation
 - (a) Tap the letter in the right column next to the contact you want to call. The contact's summary screen appears.
 - (b) Tap which number to call or send email/text messages.

The letter that appears opposite a contact entry corresponds to a particular contact information. These are as follows:

 - e — Email address
 - e2 — Second email address
 - e3 — Third email address
 - h — Home phone number
 - h2 — Second home phone number
 - m — Mobile phone number
 - pgr — Pager phone number
 - sms — SMS address
 - w — Work phone number
 - w2 — Second work phone number
 - web — Web page
 - Using the hardware buttons
 - (a) Move the joystick up or down to scroll through the contact list and select the contact you want to call.
 - (b) Press the Send button twice—once to launch Phone and another to make the call. The call will be made to that contact's priority number.

To make a call from a contact card:

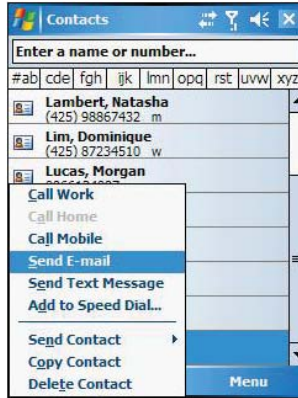
- Tap any of the listed phone numbers.
- Move the joystick up or down to scroll through the listed numbers and select one, then press the joystick or Send button to make the call.

Sending a Message to a contact

You can send an email or text message to a contact either from the contact list or from a contact card window.

To send a message from the contact list:

- 1 Tap and hold a contact to display a pop-up menu of actions.
- or -
Move the joystick up or down to scroll through the list and select a contact, then press the joystick to display a pop-up menu of actions.



- 2 Tap **Send E-mail** or **Send Text Message**.
- or -
Move the joystick up or down to select either Send option, then press the joystick to enable it.
Inbox opens to a new message window with the To field automatically filled out with the selected contact's email/text address.

- 3 Proceed to composing the message.

To send a message from a contact card:

- 1 Tap any of the listed email/text addresses.
- or -
Move the joystick up or down to scroll through the listed email/text addresses and select one, then press the joystick.
Inbox opens to a new message window with the To field automatically filled out with the selected contact's email/text address.

- 2 Proceed to composing the message.

Beaming a Contact Card

You can send a contact card to another IR or Bluetooth-enabled device either from the contact list or from a contact card window.

To beam a contact card from the contact list:

- 1 Tap and hold a contact to display a pop-up menu of actions.
- or -
Move the joystick up or down to scroll through the list and select a contact, then press the joystick to display a pop-up menu of actions.
- 2 Tap **Beam Contact**.
- 3 Do either one of the following:

8 Microsoft Pocket Outlook

Tasks

- Select a Bluetooth-enabled device, then tap the **Tap to send** link.
- Align the IR port —∟ of your device with that of the other IR-enabled device so that they are unobstructed and within close range, then select the IR-enabled device and tap the **Tap to send** link.

To beam an open contact card:



- 1 Tap **Menu**, then **Beam Contact**.
- 2 Do either one of the following:
 - Select a Bluetooth-enabled device, then tap the **Tap to send** link.
 - Align the IR port —∟ of your device with that of the other IR-enabled device so that they are unobstructed and within close range, then select the IR-enabled device and tap the **Tap to send** link.

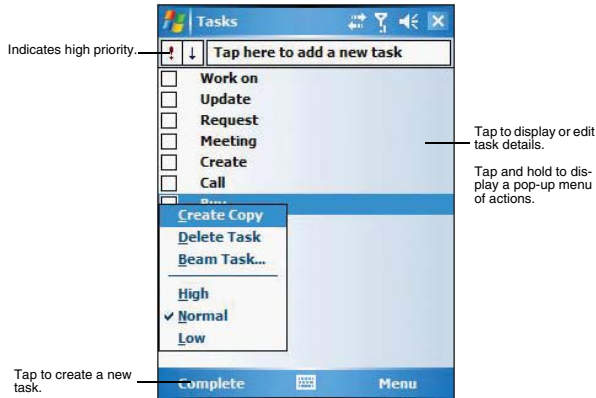
Tasks

Keeping a to do list

Use Tasks to keep track of what you have to do and prioritize them based on their importance and urgency.

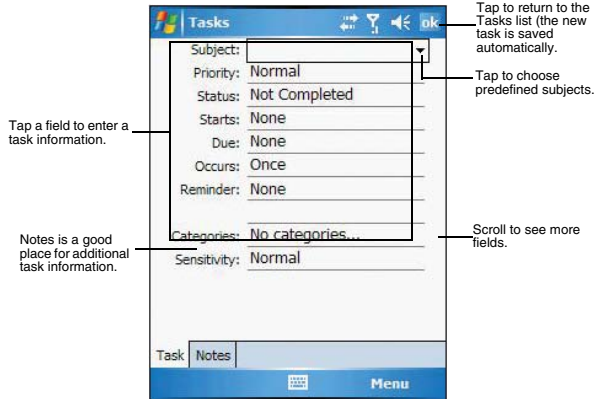
To open Tasks:

- Tap  **Programs**, then **Tasks** .
Tasks opens to the tasks list. To change the way information displays in the list, tap **Menu**, then **Options**.



Creating a task

1 Tap **New**.



2 Using the input panel, enter a description.

3 You can enter a start date and due date or enter other information by first tapping the field.

If the soft keyboard is open, hide it to see all available fields.

4 To assign the task to a category, tap **Categories** and select a category from the list. In the task list, you can display tasks by category by tapping the pick list on the top-left corner of the screen.

5 To add notes, tap the **Notes** tab.

You can enter text, draw, or create a recording.

6 After completing the details, tap **OK**.

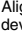
Beaming a Task

You can send a task to another IR or Bluetooth-enabled device by beaming it.

1 Tap and hold the task item.

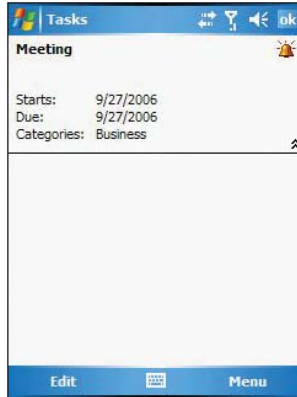
2 Tap **Beam Task** on the pop-up menu.

3 Do either one of the following:

- Select a Bluetooth-enabled device, then tap the **Tap to send** link.
- Align the IR port  of your device with that of the other IR-enabled device so that they are unobstructed and within close range, then select the IR-enabled device and tap the **Tap to send** link.

Using the Tasks summary screen



When you tap a task in the task list, a summary screen displays. To change the task, tap **Edit**.

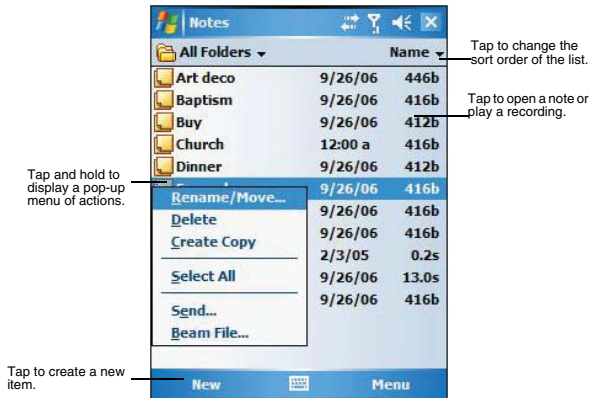

 **Notes**

Capturing thoughts and ideas

Quickly capture thoughts, reminders, ideas, drawings, and phone numbers with Notes. You can create a written note or a recording. You can also include a recording in a note. If a note is open when you create the recording, it is included in the note as an icon. If the note list displays, it is created as a stand-alone recording.

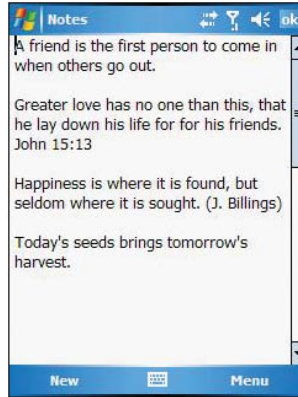
To open Notes:

- Tap , then **Notes** . Notes opens to the note list.



Creating a note

- 1 Tap **New**.
- 2 Create the note by writing, drawing, typing, or recording.
For more information about using the input panel, writing and drawing on the screen, and creating a recording, go to page 45.



Sending a Note

You can send a note to another person either by email or by beaming it to that person's IR or Bluetooth-enabled device.

NOTE: You must first set up an email account on your device before you can send a note by email. Go to page 113 for instructions on setting up an email account.

To send a note by beaming:

- 1 In the task list, tap and hold the note.
- 2 Tap **Beam File** on the pop-up menu.
- 3 Do either one of the following:
 - Select a Bluetooth-enabled device, then tap the **Tap to send** link.
 - Align the IR port $\text{—} \angle$ of your device with that of the other IR-enabled device so that they are unobstructed and within close range, then select the IR-enabled device and tap the **Tap to send** link.

To send a note by email:

- 1 In the task list, tap and hold the note.
- 2 Tap **Send via E-mail** on the pop-up menu.
A new message window in Inbox displays with the selected note shown as an attachment (*.pwi).
- 3 Proceed to completing the email message.

9 Companion Programs

This chapter describes the companion programs available on your device— Word Mobile, Excel Mobile, PowerPoint Mobile and Windows Media Player 10.1 Mobile for Pocket PC.



- Word Mobile
- Excel Mobile
- PowerPoint Mobile
- Windows Media Player 10.1 Mobile for Pocket PC

Word Mobile

With Word Mobile you can:

- Create new documents on your device or you can copy documents from your PC to your device.
- Synchronize documents between your PC and your device so that you have the most up-to-date content in both locations.

To open Word:

- Tap  **Programs**, then **Word Mobile** .
- Word opens to the Pocket Word file list.

Creating a new Document

- In the document list window, tap **New**.
A blank document appears. Or, if you've selected a template for new documents in the Options dialog box, that template appears with appropriate text and formatting already provided.

You can save a document you create or edit in a variety of formats, including:

- Word (.doc)
- Document Template (.dot)
- Rich Text Format (.rtf)
- Plain Text (.txt)

Word Mobile provides basic formatting options, such as font style, paragraph alignment, and bullet options, in its toolbar. You can show and hide this toolbar by tapping **View**, then **Toolbar** on the command bar.

Using the Word Mobile file list

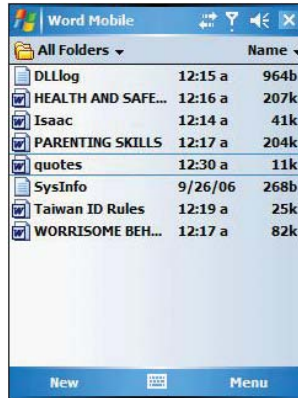
Word Mobile contains a list of the files stored on your device. The file list is the default window when you open Word Mobile. Every time you tap **OK** in an open document, the file list displays.

- Tap a file in the list to open it. You can open only one document at a time; when you open a second document, you'll be asked to save the first.

9 Companion Programs

Word Mobile

- To delete, make copies of, and send files, tap and hold a file in the list, then select the appropriate action on the pop-up menu.



Entering information

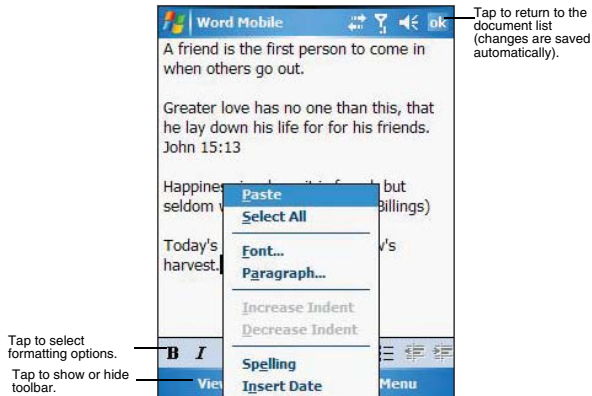
You can enter information in Word Mobile in one of four modes—typing, writing, drawing, and recording—which are displayed on the View menu.

If you're opening a Word document created on a computer, select **Wrap to Window** on the View menu so that you can see the entire document.

You can change the zoom magnification by tapping **View, Zoom**, then select the percentage you want. Select a higher percentage to enter text and a lower one to see more of your document.

Typing Mode

- Using the input panel, enter typed text into the document.
- To format existing text and to edit text, first select the text. You can select text as you do in a Word document, using your stylus instead of the mouse to drag through the text you want to select.
- To find text in a document, tap **Menu, Edit**, then **Find/Replace**.



Recording Mode


In recording mode, you can embed a recording into your document. Recordings are saved as .wav files. For more information on recording, see page 45.

Sending a document

You can send a Word document to another person either by email or by beaming it to that person's IR or Bluetooth-enabled device.

NOTE: You must first set up an email account on your device before you can send a note by email. Go to page 113 for instructions on setting up an email account.

To send a document by beaming:

- 1 In the Word document list, tap and hold the document.
- 2 Tap **Beam File** on the pop-up menu.
- 3 Do either one of the following:
 - Select a Bluetooth-enabled device, then tap the **Tap to send** link.
 - Align the IR port  of your device with that of the other IR-enabled device so that they are unobstructed and within close range, then select the IR-enabled device and tap the **Tap to send** link.

To send a document by email:

- 1 In the Word document list, tap and hold the document.
- 2 Tap **Send via E-mail** on the pop-up menu.

A new message window in Inbox displays with the selected note shown as an attachment (*.pwi).
- 3 Proceed to completing the email message.

Printing a document



Your device supports printing of documents on a Bluetooth-enabled printer. An additional software needs to be installed on your device to enable you to print files to a Bluetooth-enabled printer. Contact your local dealer for more information..

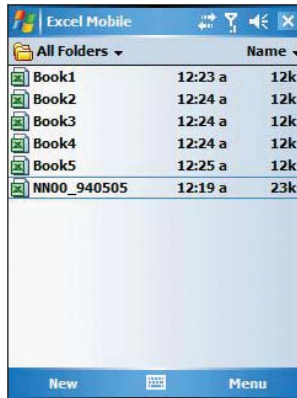
Excel Mobile

With Excel Mobile you can:

- Create new spreadsheets on your device or you can copy spreadsheets from your PC to your device.
- Synchronize spreadsheets between your PC and your device so that you have the most up-to-date content in both locations.

To open Excel:

- Tap  **Programs**, then **Excel Mobile** .
- Excel opens to the Pocket Excel file list.



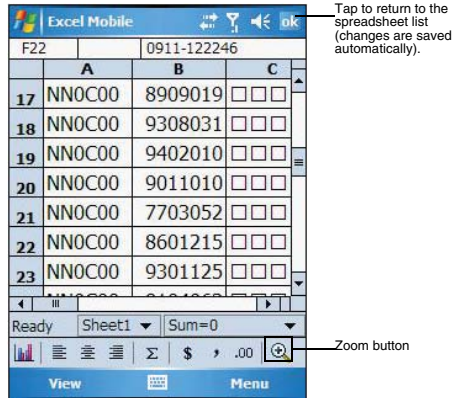
Creating a new spreadsheet

- In the Excel Mobile file list, tap **New**.
A blank spreadsheet appears. Or, if you've selected a template for new spreadsheets in the Options dialog box, that template appears with appropriate text and formatting already provided.

You can save a workbook you create or edit it in a variety of formats, including:

- Excel Workbook (.xls)
- Excel Template (.xlt)

Pocket Excel provides fundamental spreadsheet tools, such as formulas, functions, sorting, and filtering, in its toolbar. You can show and hide this toolbar by tapping the **View**, then **Toolbar**.



Using the Excel Mobile file list

Excel Mobile contains a list of the files stored on your device. The file list is the default window when you open Excel Mobile. Every time you tap **OK** in an open workbook, the file list displays.

- Tap a file in the list to open it. You can open only one workbook at a time; when you open a second workbook, you'll be asked to save the first.
- To delete, make copies of, and send files, tap and hold a file in the list, then select the appropriate action from the pop-up menu.

Tips for working in Excel Mobile

Note the following when working in large worksheets in Excel Mobile:

- View in full-screen mode to see as much of your worksheet as possible.
 - Tap **View**, then **Full Screen**.
 - To exit full screen mode, tap **Restore**.
- Show and hide window elements.
 - Tap **View**, then tap the elements you want to show or hide.
- You might want to freeze the top and left-most panes in a worksheet to keep row and column labels visible as you scroll through a sheet.
 - Select the cell where you want to freeze panes.
 - Tap **View**, then **Freeze Panes**.
- Split panes to view different areas of a large worksheet.
 - Tap **View**, then **Split**.
 - Drag the split bar to where you want it.

To remove the split, tap **View**, then **Remove Split**.
- Show and hide rows and columns.
 - To hide a row or column:
 - Select a cell in the row or column you want to hide.
 - Tap **Menu**, **Format**, **Row** or **Column**, then **Hide**.
 - To show a hidden row or column:
 - Tap **Menu**, then **Undo Row Height**.
 - Type a reference that is in the hidden row or column.
 - Tap **Menu**, **Format**, **Row** or **Column**, and then **Unhide**.

9 Companion Programs

PowerPoint Mobile

Beaming a worksheet

You can send a worksheet to another person either by email or by beaming it to that person's IR or Bluetooth-enabled device.

NOTE: You must first set up an email account on your device before you can send a note by email. Go to page 113 for instructions on setting up an email account.

To send a worksheet by beaming:

- 1 In the Excel book list, tap and hold the file.
- 2 Tap **Beam File** on the pop-up menu.
- 3 Do either one of the following:
 - Select a Bluetooth-enabled device, then tap the **Tap to send** link.
 - Align the IR port $\text{---} \angle$ of your device with that of the other IR-enabled device so that they are unobstructed and within close range, then select the IR-enabled device and tap the **Tap to send** link.

To send a worksheet by email:



- 1 In the Excel book list, tap and hold the file.
- 2 Tap **Send via E-mail** on the pop-up menu.

A new message window in Inbox displays with the selected note shown as an attachment (*.pwi).
- 3 Proceed to completing the email message.

PowerPoint Mobile

Use PowerPoint Mobile to view slide show presentations. You can download slide show presentations from a storage card, company network, internet, email attachment or obtained by synchronizing with your personal computer.

To open PowerPoint Mobile:

- Tap  **Programs**, then **PowerPoint Mobile** .

Getting slide shows onto your device

You can download PowerPoint files from a memory card or the Web to your computer, then synchronize them with your device. To do so, you need to activate your device (you only need to activate it once), then set up synchronization for files in ActiveSync.



To get slide show presentation onto your device:

- 1 Open ActiveSync on your computer.
- 2 Use Windows Explorer on your computer to locate the PowerPoint Mobile folder and the Pocket_PC My Documents folder.
- 3 Use ActiveSync to download the files from your computer to your device as described in the Read Me file in the PowerPoint Mobile folder.

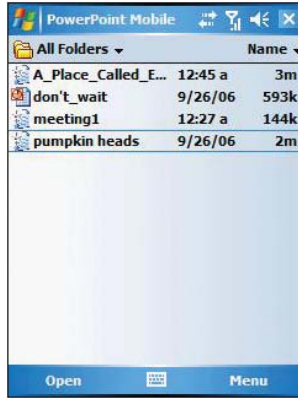
Using PowerPoint Mobile

PowerPoint Mobile contains a list of files stored on your device. The file list is the default window when you open PowerPoint Mobile.

To open a PowerPoint presentation:

- 1 Tap  **Programs**, then **PowerPoint Mobile** .

- 2 Tap the slide show you want to view.




- 3 Tap the current slide to advance to the next slide.

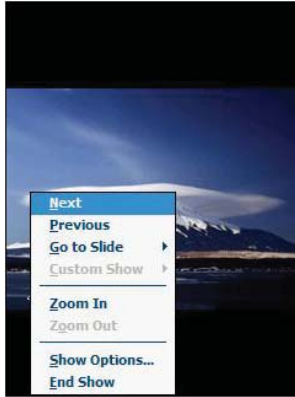


9 Companion Programs


PowerPoint Mobile

To stop a slide show presentation:

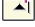
In a PowerPoint Mobile presentation, tap and hold , then tap **End Show**.



To change the slide show presentation:

- 1 In a PowerPoint Mobile presentation, tap and hold , then tap **Show Options**.
- 2 Tap the **Orientation** tab, then select the orientation.

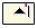
To navigate between slides

- 1 In a PowerPoint Mobile presentation, tap and hold the , then tap **Go to Slide**.
- 2 Tap the slide you want to view.

Setting the slide show playback options

You can change the PowerPoint presentation settings to turn off animation, prevent slide show transitions from playing, or set time interval between each slide.

To set the slide show playback options:

- 1 In a PowerPoint Mobile presentation, tap and hold the , then tap **Show Options**.
- 2 Tap the **Playback** tab, select the Override playback options for all files check box.
- 3 Do any of the following:
 - Select "Show without animation" check box to turn off builds and other animations.
 - Select "Show without slide transition" check box to prevent slide transitions from playing.
 - Select "Use slide timings, if present" check box to use the timings recorded with each slide in a presentation.
 - Select "Loop continuously" check box to automatically advance to the first slide after the last slide in a presentation.
- 4 Tap **OK**.

Sending a PowerPoint file

You can send a PowerPoint file to another person either by email or by beaming it to that person's IR or Bluetooth-enabled device.

NOTE: You must first set up an email account on your device before you can send a note by email. Go to page 113 for instructions on setting up an email account.

To send a PowerPoint file by beaming:

- 1 In the PowerPoint document list, tap and hold the document.
- 2 Tap **Beam File** on the pop-up menu.
- 3 Do either one of the following:
 - Select a Bluetooth-enabled device, then tap the **Tap to send** link.
 - Align the IR port $\text{---} \angle$ of your device with that of the other IR-enabled device so that they are unobstructed and within close range, then select the IR-enabled device and tap the **Tap to send** link.

To send a PowerPoint file by email:

- 1 In the PowerPoint document list, tap and hold the document.
- 2 Tap **Send via E-mail** on the pop-up menu.

A new message window in Inbox displays with the selected note shown as an attachment (*.pwi).
- 3 Proceed to completing the email message.

Windows Media Player

Enjoy your favorite music and movies on the road, online or offline, with the new Windows Media Player 10 Mobile for Pocket PC. The Player provides you with the highest quality audio and video experience for your mobile entertainment and it works seamlessly with Windows Media Player 10 on your Windows XP-based computer.

Program enhancements

A lot of new features are added to the new Windows Media Player 10 Mobile for Pocket PC.

Improved playback support

- Supports Windows Media Audio and Video 9 Series codecs, which gives 20 percent improvements in audio compression and as much as 50 percent for video compared with previous versions.
- Better MP3 playback support lets you enjoy MP3 music files more.
- Smoother video playback improves playback of broadband content from the Web as well as local video content that is processor-intensive.
- Multiple bit-rate (MBR) support enhanced your music experience with automatic sensing and selection of the bit rate that is best suited for your device and connection.
- Variable Bit Rate (VBR) support lets you play content that has been optimized for quality to give you optimum playback experience.

Enhanced broadband playback support

- Significant improvements in performance now allows you to play back nearly any content from the web. Supports up to 300 Kbps content played back directly from the Web over either a wired or Wi-Fi connection.
- Improved networking support for new IPv6 protocols lets you enjoy easier Internet connection for enhanced Web streaming, providing you with a seamless browsing and media playback experience.

Friendlier playback controls

- The button mapping function allows you to assign hardware buttons on your device to perform standard playback functions such as Play, Pause, Stop or Fast Forward. You can also assign a button to toggle off the screen to help minimize power consumption while continuing to listen to music.
- The Player volume control is now separate from the system sounds control allowing you to adjust the level of your media playback while retaining the volume level set for system sounds.

Better media management

- Supports auto-discovery of supported media content means that the Player now automatically scans your device's main memory and storage cards for all supported digital media types including WMA, MP3, WAV, WMV and ASF.
- Direct support in Windows Media Player 10 on your computer lets you chose your playlists and easily transfer them to your device.
- Supports recording of your favorite TV shows to your computer. With the Auto Sync feature in Windows Media Player 10 on your computer, you can plug your device into your computer, and your favorite TV programs can be automatically converted and synchronized to your device.

Customized entertainment experience

- Match the Player's look with your style and mood by downloading a variety of custom skins ranging from cute rubber duckies to retro Elvis themes.
- Use your favorite WMA music to create and apply your own custom WMA ring tones.

Copying files to your device

Use the Windows Media Player on your computer to copy your digital media files to your Pocket PC. Doing this, instead of simply copying files using the Explore button in ActiveSync, ensures that licences are copied with protected files.

- 1 In Windows Media Player on your computer, click **Copy to CD or Device**.
-or-
On the File menu, point to **Copy**, and then click **Copy to Portable Device** (you must first connect your device to your computer).
- 2 In the Items to Copy pane, in the drop-down list, click the playlist, category, or other item that you want to copy.
- 3 Clear the check boxes next to any files you do not want to copy.
- 4 In the Items on Device pane, in the drop-down list, click the name of your device.
- 5 Click the **Copy** button.
The device Player verifies that there is sufficient storage space on your device to copy the selected files. If there is sufficient space, the files are converted (if necessary) and copied.
- 6 Repeat steps 2-5 for any other items that you want to copy to your device.

NOTE: To facilitate faster copying of audio files to your device, it is recommended that you configure Windows Media Player 10 on your computer to automatically determine the quality level settings applicable to your MC35 EDA.

To open Windows Media Player 10 Mobile for Pocket PC:

- Tap , then **Windows Media** .
The Player displays the last open window from your previous session.

The library

The library contains links to your playlists and audio or video files. You can sort content by criteria such as artist name, album title or genre. By default, Windows Media Player 10 Mobile automatically searches your device for compatible digital media files and adds them to the My Device library. Similarly, when you insert a storage card into your device, Windows Media Player 10 Mobile automatically detects the files and adds them to the Storage Card library.

If the Player does not detect new files that you copy to your device, you can manually update the library by tapping **Menu**, then **Update Library**.

The playlist

A playlist is a customized list of digital media files that you want to watch or listen to. Using a playlist lets you group various digital media files together and specify the order you want the files to play in. You can also use playlists to copy files to your computer.

You can create a playlist based on:

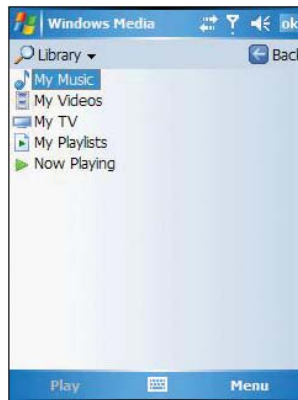
- Source - For example, tracks from various CDs of your favorite artist or streaming media from an online music site.
- Personal preferences - For example, a playlist of tracks belonging to your favored music genre or video clips from your funny movie collection.
- Mood or activities - For example, a playlist of tracks you want to listen while travelling or during your R&R periods.

The Player has two default playlists:

- Local Content - Consists of all compatible audio and video files stored on your device and/or storage card.
- Web Favorites - Consists of your favorite streaming media files. This playlist is empty until you add items to it.

Adding items to the Now Playing playlist

- 1 In the Player window, tap **Menu**, then **Library**.



- 2 Select a library in the Library pick list (for example a storage card).

TIP: If the Player does not detect new files that you copy to your device, you can manually update the library by tapping **Menu**, then **Update Library**. After the files have been added, then tap **Done**.

- 3 Select a category, then tap and hold the item that you want to add in the Now Playing folder.

9 Companion Programs

Windows Media Player






- 4 Tap **Menu**, then **Queue Up**.



- 5 Tap **Menu**, then **Now Playing**.
- 6 On the Now Playing window, tap the **Add** button to switch to the Library window and find items to add to the Now Playing playlist.

NOTE: To quickly add a group of files to the Now Playing playlist, tap and hold an item in the library (such as an album name, artist name or genre), then tap **Queue Up**.

Editing the Now Playing playlist

- 1 In the Player window, tap **Now Playing** on the command bar.
- or -
Tap **Menu**, then **Library**, then tap **Now Playing**, then the playlist you want to edit.
- 2 Do any of the following:
 - Tap  to move the selected item up in the playlist. You can also tap and drag an item to move it up in the playlist.
 - Tap  to move the selected item down in the playlist. You can also tap and drag an item to move it down in the playlist.
 - Tap  to display the Library window and add items to the Now Playing playlist.
 - Tap  to delete the selected item from the playlist.
 - Tap  to view track properties of the selected item.

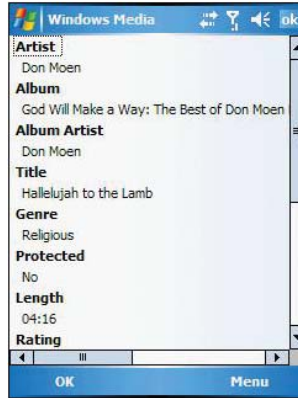
Viewing track properties

You can check the file properties of a track for your reference. You can do this either in a playlist window or in the Player window.

To view track properties from a playlist window:

- 1 In the Player window, tap **Now Playing**.
- or -
Tap **Menu**, **Library**, then **Now Playing**.

- 2 Tap a file or **Play** a file, then tap **Menu**, then **Properties**.



- 3 Tap the scroll bar to view more fields.

To view track properties from the Player window:

- Tap **Menu**, then **Properties**.
Tap the scroll bar to view more fields.

Deleting an item in the Now Playing playlist

- 1 In the Player window, tap **Now Playing**.
- 2 Tap a library.
- 3 Tap and hold the playlist name, then tap **Remove from Playlist** from the pop-up menu.
- or -
Tap the playlist name, tap **Menu**, then **Remove from Playlist**.

File Playback

The Player supports playback of the following file formats:

- Windows Media - Including .asf, .asx, .wax, .wm, .wma, .wmv, .wmx, and .wvx files.
- MPEG - .mp3 files

You can play files stored in your device, a storage card, or a network.

Playing a file stored in your device or in a storage card

If you want to use files stored in a storage card, install the card to your device. Go to page 36 for instructions.

- 1 In the Player window, tap **Now Playing**.
- 2 Tap the library, then the playlist/location where the file you want to play is assigned/located.
- 3 Tap **Play**.
Screen shifts to the Player window. Unless you selected the last listed track in a playlist or location, the rest of the tracks will automatically be played.

Playing a streaming media file

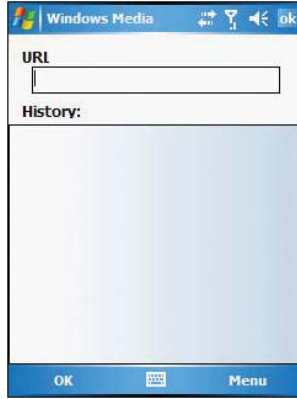
You can play files located on a network. Your device must first be connected to the network before you can do this.

- 1 Tap **Menu**, then **Library** in the Player window.

9 Companion Programs

Windows Media Player

- 2 Tap **Menu**, then **Open URL**.



- 3 Enter a URL.
- 4 Tap **OK**.
Screen shifts to the Player window.

Playback controls

The user interface of the Player window lets you easily manage all aspects of the track playback. The screenshot below shows the functions of the Player control buttons, as well as all available menus.



To play a playlist in random order:

- Tap **Menu**, then **Shuffle**.

To repeat playback of a playlist:

- Tap **Menu**, then **Repeat**.

Customizing the Player

You can change the appearance and functionality of the Player to suit your personal style and preferences.

Using skins to change the Player look

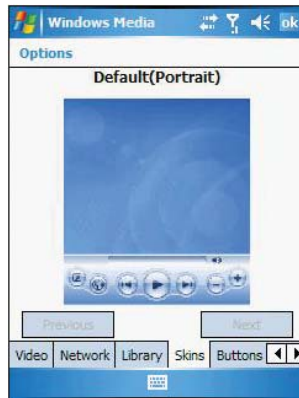
Change the appearance of the Player by using skins. To download skins and learn related information, go to <http://www.microsoft.com/windows/windowsmedia/>.

To download skins from your computer to your device, follow the procedures described in the "Using ActiveSync to exchange files" section on page 36.

NOTE: To make sure that downloaded skins appear in the Skin Chooser panel, do not store the skin files in the Windows folder of your device.

To apply a skin:

- 1 In the Player window, tap **Menu**, then **Options**.
- 2 Tap the **Skins** tab, then tap the Previous or Next button to locate a skin.



- 3 Tap **OK**.
The Player switches to skin mode.

Changing your audio and video settings

You can change the audio and video settings of the Player to suit your listening preferences.

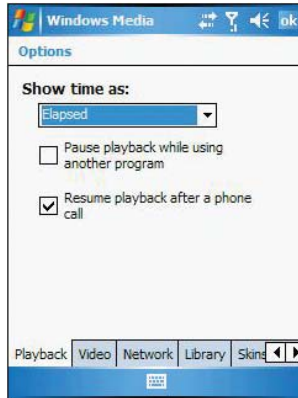
To set audio and video preferences:

- 1 In the Player window, tap **Menu**, then **Options**.
- 2 Tap the **Playback** tab, then do any of the following:
 - In the "Show time as" pick list, select whether to show how much time has elapsed or remaining on the Player window.
 - Tap the "Pause playback while using another program" check box, to pause or continue playback when another program window is displayed.

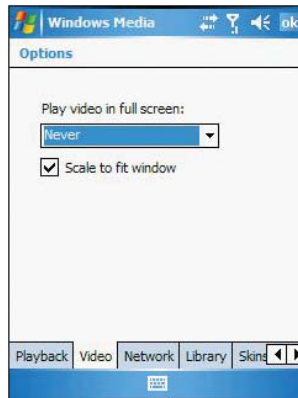
9 Companion Programs

Windows Media Player

- Tap the “Resume playback after a phone call” check box, to continue playback after a phone call.



- 3 Tap the **Video** tab, then do any of the following:
 - In the “Play video in full screen” pick list, select a screen size for video playback.
 - Tap the “Scale to fit in window” check box to scale down oversized video files (typically over 240 x 176 pixels).



- 4 Tap **OK**.

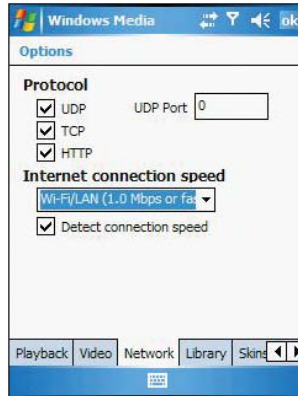
Changing your network settings

You can define Player settings for connecting to a network to optimized playback of streaming media.

To set network settings:

- 1 Tap **Menu**, then **Options**.
- 2 Tap the **Network** tab, then select the check box opposite each network protocol you want to enable.

You must select at least one protocol.



- 3 Select the speed of your network connection.
- 4 Tap **OK**.

NOTE: Some networks use a firewall that prevents users from receiving streams. Contact your network administrator for more information.

Changing the startup screen

You can define the startup screen when you start the Windows Media Player Mobile.

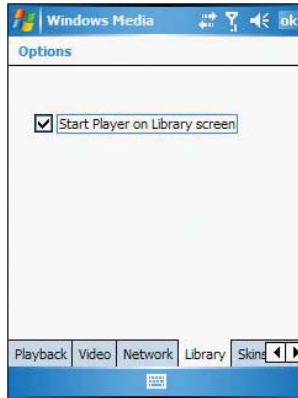
To change the startup screen:

- 1 Tap **Menu**, then **Options**.
- 2 Tap the **Library** tab.
- 3 Do either one of the following:
 - Select the "Start Player on Library screen" check box, to show the Library window when you start the Windows Media Player Mobile.

9 Companion Programs

Windows Media Player

- Clear the “Start Player on Library screen” check box, to show the Player window when you start the Windows Media Player Mobile.



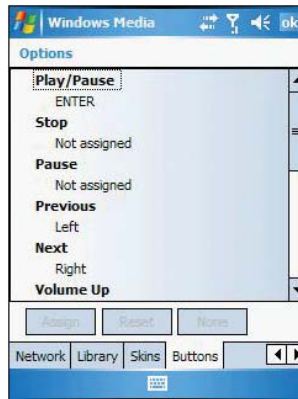
4 Tap **OK**.

Setting hardware playback controls

The button mapping function allows you to assign hardware buttons on your device to perform standard playback functions. You can also assign a button to toggle off the screen to help minimize power consumption while continuing to listen to music.

To map a button:

- 1 Tap **Menu**, then **Options**.
- 2 Tap the **Buttons** tab.



- 3 In the list of controls, tap a control name.
- 4 Tap the **Assign** button, then press the hardware button on your device.
- 5 Tap **OK**.



Licenses and Protected files

Some digital media content from the Internet, CD tracks, and videos have associated licenses that protect them from being unlawfully distributed or shared.

Licenses are managed and created using digital rights management (DRM), which is the technology for securing content and managing the rights for its access.

Some licenses may prevent you from playing files that are copied to your device. Files that have licenses associated with them are called protected files.

Use the Windows Media Player on your computer to copy your digital media files to your device. Doing this, button in ActiveSync, ensures that licences are copied with protected files.

For more information on using Windows Media Player for Pocket PC, tap , then tap **Help** .

10 Wireless Data Programs

Your MC35 has built-in support for a range of wireless data communication programs:

- Use Internet Explorer Mobile to browse the Web and view WAP-enabled sites.
- Use Messaging to send and receive email/text messages.
- Use MSN Messenger to send and receive instant messages.
- Use MSN Hotmail to send and receive email.
- Use Terminal Services Client to wirelessly log onto a Windows NT server type PC that is running Terminal Services software
- Use ActiveSync to remotely synchronize with your computer.

This chapter describes how to use Internet Explorer Mobile, Messaging, MSN Messenger, and Terminal Services Client.

- Internet Explorer
- Messaging
- MSN Messenger
- Terminal Services Client

Internet Explorer Mobile

Use Internet Explorer Mobile to view Internet or Intranet sites from your device. You can download files and programs when browsing these sites. During synchronization with your computer, you can choose to download your favorite links and mobile favorites that are stored in the Mobile Favorites subfolder of Internet Explorer on your computer.

Internet Explorer Mobile includes support for:

- XHTML Basic
- Cascading Style Sheets
- WML 2.0
- JavaScript 5.5
- IPv6

Enter the web address you want to visit.




Go button

Tap to select a previously selected site.

10 Wireless Data Programs


Internet Explorer Mobile

To open Internet Explorer Mobile:

- Tap  then **Internet Explorer**.

Browsing the Internet

To connect and start browsing, do either one of the following:

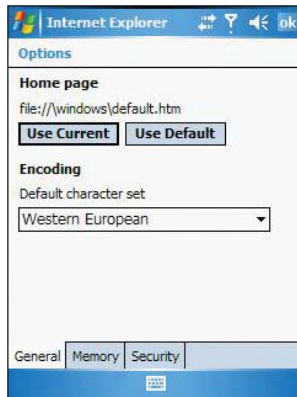
- Tap **Menu**, **Favorites**, then tap the favorite you want to view.
- In the address bar that appears at the top of the screen, enter the Web address you want to visit, then tap .
- Tap the Address Bar pick list to choose from previously entered addresses.

Viewing the History list

- Tap **Menu**, then **History**.

To change the number of days of links stored in the History list and clear the History list:

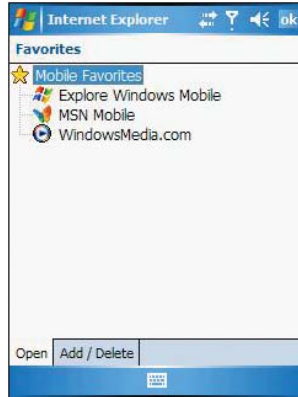
- 1 In the Internet Explorer Mobile main window, tap **Menu**, **Tools**, then **Options**.
- 2 Tap **Memory** tab.



- 3 Tap the pick list under "Save links to pages visited in the past" to set the number of days of links.
- 4 Tap **Clear History** to delete the stored links.
- 5 Tap **OK**.

Mobile favorites

- 1 To display the Mobile Favorites navigation window, tap **Menu**, then **Favorites**.

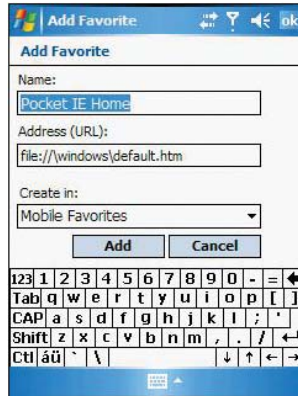


- 2 Tap the page you want to view.

The page that was downloaded the last time you synchronized with your computer displays. If the page is not on your device, the favorite is dimmed. Synchronize with your computer again to download the page to your device, or connect to the Internet to view the page.

To add a favorite link:

- 1 While on the page you want to add, tap and hold on the page.
- 2 Tap **Add to Favorites** from the pop-up menu.



- 3 Make the changes you want on the Name and Address fields
- 4 In the Create in pick list, select the folder where you want the link to be stored.
- 5 Tap **Add**, then tap **OK**.

Mobile Favorites folder

Only items stored in the Mobile Favorites subfolder of the Favorites folder of Internet Explorer on your computer are synchronized with your device. This folder was created when you selected the Favorites information type for ActiveSync synchronization with your computer.

Favorite Links

During synchronization, the list of favorite links in the Mobile Favorites folder on your computer is synchronized with Internet Explorer Mobile on your device. Both locations are updated with changes made to either list each time you synchronize. Unless you mark the favorite link as a mobile favorite, only the link will be downloaded to your device, and you will need to connect to your ISP or network to view the content.

Mobile Favorites

If you are using Microsoft Internet Explorer 5.0 or later on your computer, you can download mobile favorites to your device. Synchronizing mobile favorites downloads Web content to your device and enables you to view pages while you are disconnected from your ISP and computer. To quickly create mobile favorites, use the Internet Explorer plug-in installed with ActiveSync.

To create a mobile favorite:

- 1 In Internet Explorer on your computer, click **Tools**, then **Create Mobile Favorite**.
- 2 To change the link name, enter a new name in the Name box.
- 3 Optionally, in Update, select a desired update schedule.

If you did not specify an update schedule, you need to manually download content to keep the information updated on both your computer and device. Before synchronizing with your device, in Internet Explorer on your computer, click **Tools**, then **Synchronize**. You will see the last time content was downloaded to the computer, and you can manually download content if needed.

- 4 Click **OK**.
Internet Explorer downloads the latest version of the page to your computer.

TIP: You can add a button to the Internet Explorer toolbar for creating mobile favorites. In Internet Explorer on your computer, click **View, Toolbars**, then **Customize**.

To download a mobile favorite:

- 1 Right-click the mobile favorite, then click **Properties**.
- 2 In the Download tab, specify the number of links deep you want to download.
To conserve device memory, go only one level deep.
- 3 Synchronize your device and computer.
Mobile favorites that are stored in the Mobile Favorites folder in Internet Explorer are downloaded to your device.

To save device memory in downloading mobile favorites:

Mobile favorites take up storage memory on your device. To minimize the amount of memory used, observe the following:

- In the settings for the Favorites information type in ActiveSync options, turn off pictures and sounds, or top some mobile favorites from being downloaded to your device.
- Limit the number of downloaded linked pages. In Internet Explorer on the computer, right-click the mobile favorite you want to change, then click **Properties**. In the Download tab, specify 0 or 1 for the number of linked pages you want to download.