
MC35 EDA User Guide

FCC Hearing Aid Compatibility

Your device is compliant with the FCC Hearing Aid Compatibility (HAC) requirements. When some wireless devices are used near hearing devices (such as hearing aids and cochlear implants), a buzzing, humming, or whining noise may be detected. Some hearing devices may be more immune than others to this interference, and wireless devices also vary in the amount of interferences they generate.




The FCC rules governing hearing aid compatibility requires wireless devices to fulfill the telephone near field category M3 or higher category. The M-rating generally indicates a wireless device has a lower radio frequency (RF) emissions level or interference with hearing devices. Some hearing aids may be more immune than others are to interference. Consult your hearing health-care professional to determine the rating of your hearing aid and whether the hearing aid will work with this device,

Using the hearing aid compatible feature

MC35 has predefined profiles that are set. Some, for example, home, office, portable hands free, HAC and other options may be adjusted to suit a certain environment or an accessory.

The HAC mode optimizes audio performance for some hearing aids. To activate the HAC mode:

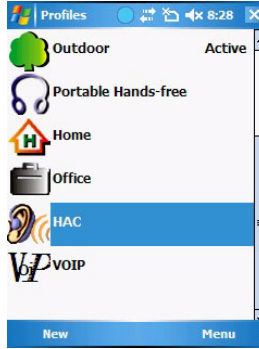
NOTE: Make sure your device is turned on. Refer to the MC35 EDA User Guide for more information.

- 1 Tap  > **Settings** .
- 2 On the System tab, tap **Phone Profiles** .



Addendum

- 3 Tap **HAC**.



- 4 Tap **Menu > Active**.

