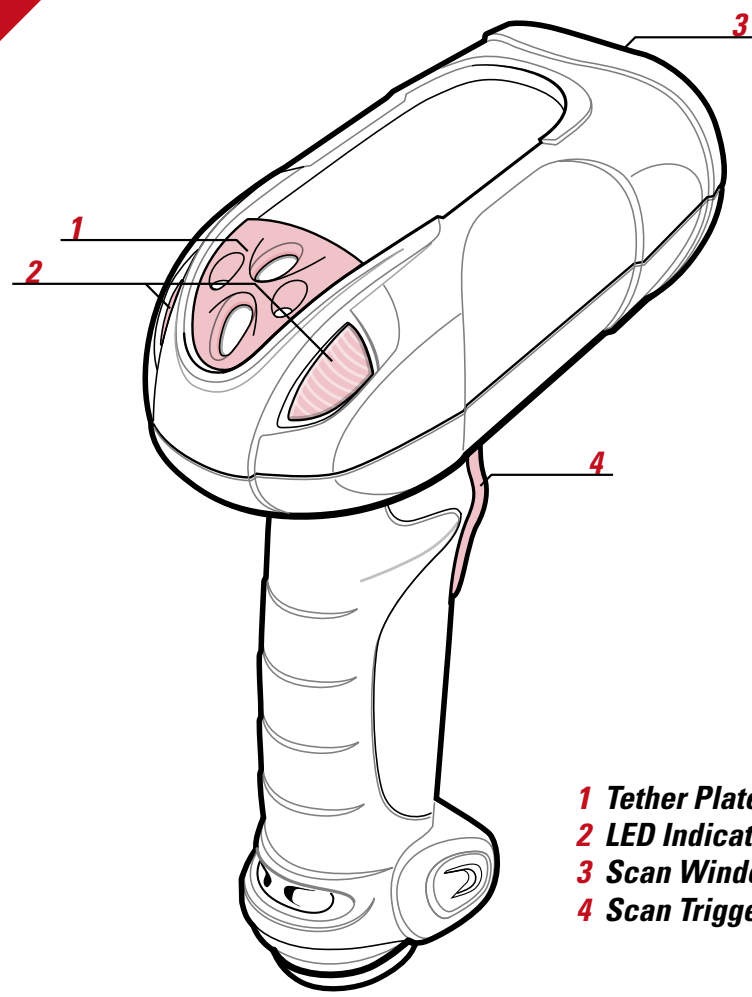
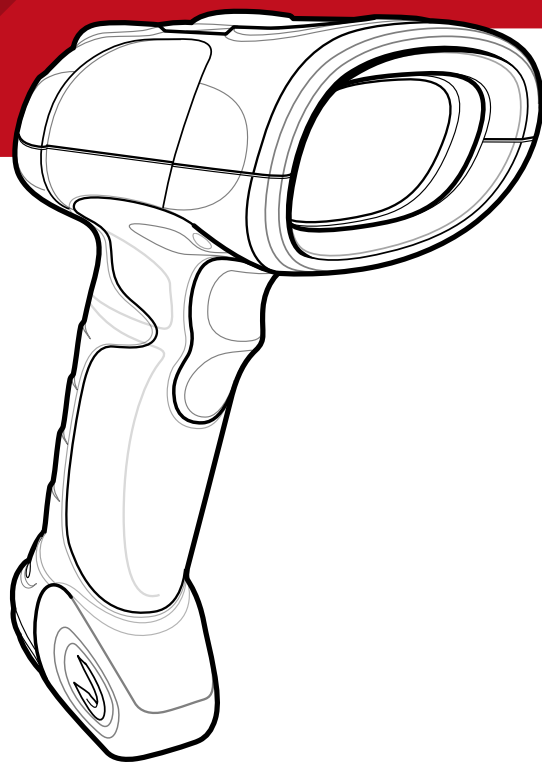


# LS/DS 3408 Quick Start Guide

<http://www.symbol.com/barcode>

See Product Reference Guide for more information

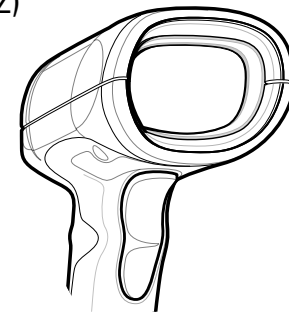
POST IN WORK AREA



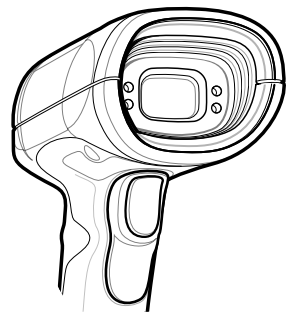
- 1 Tether Plate
- 2 LED Indicators
- 3 Scan Window
- 4 Scan Trigger

## Variants

Laser Scanner (ER, FZ)

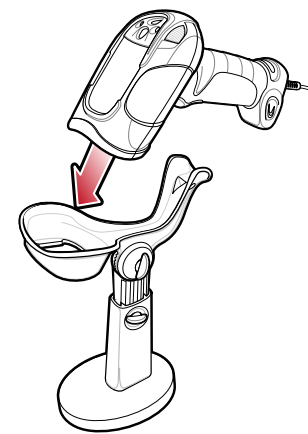


Digital Scanner (DS)

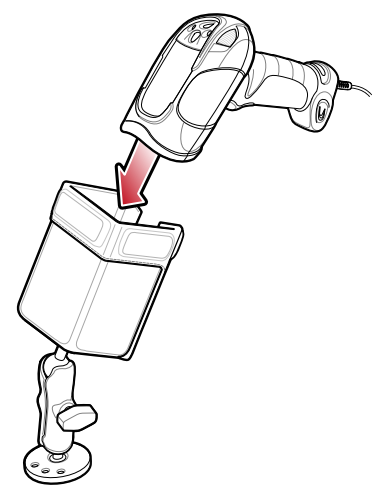


## Accessories

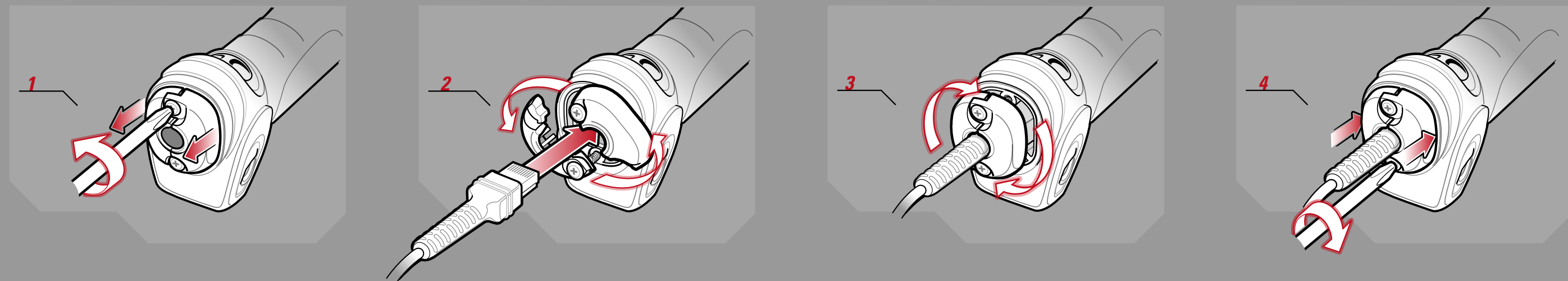
IntelliStand



Forklift Holder



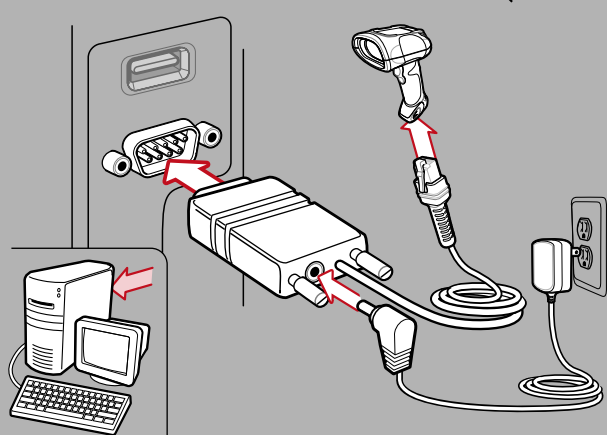
## Cord Attachment



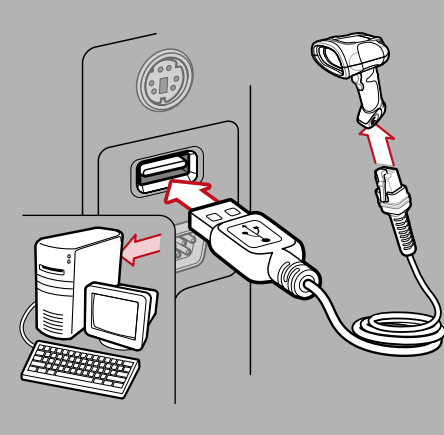
## Host Interfaces

NOTE: Cables may vary depending on configuration

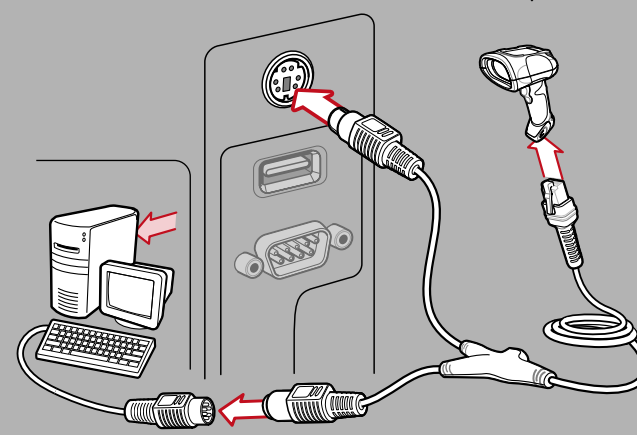
RS-232



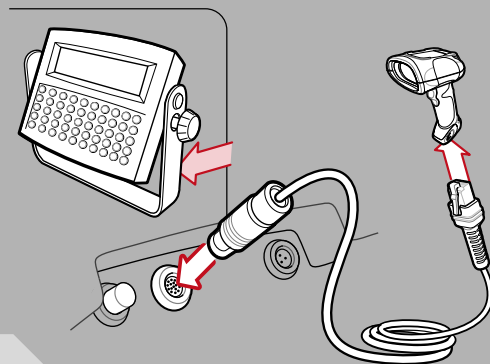
USB



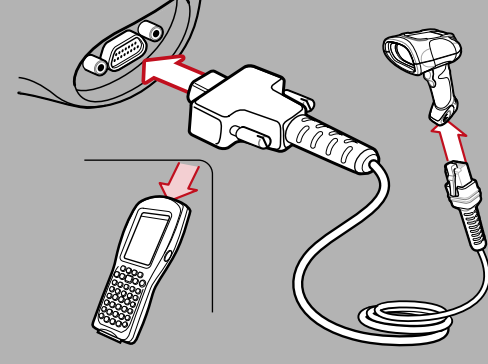
Keyboard Wedge



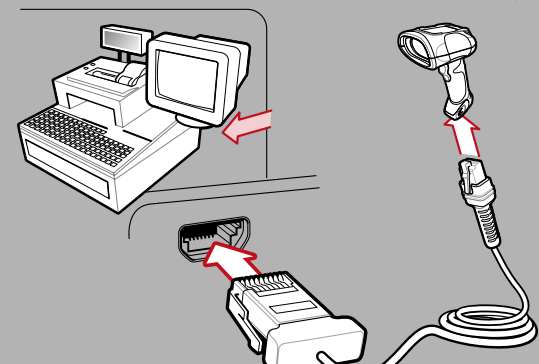
Scanner Emulation



Wand Emulation



IBM 46XX



## Troubleshooting

### Scanner not working

No power to scanner

Check system power; ensure power supply, if required, is connected

Incorrect interface cable used

Ensure that correct interface cable is used

Interface/power cables are loose

Check for loose cable connections

### Scanner not decoding bar code

Scanner not programmed for bar code type

Ensure scanner is programmed to read type of bar code being scanned

Bar code unreadable

Ensure bar code is not defaced; try scanning test bar code of same bar code type

Distance between scanner and bar code incorrect

Move scanner closer to or further from bar code

### Scanner decoding bar code, but data not transmitting to host

Scanner not programmed for correct host interface

Check scanner host parameters or edit options

Interface cable is loose

Check for loose cable connections

### Scanned data incorrectly displayed on host

Scanner not programmed for correct host interface

Check scanner host parameters or edit options

## LS/DS 3408 Programming Bar Codes

### Set Defaults



SET DEFAULTS

### IBM 46XX Host Types



PORT 5B

### Wand Emulation Host Types



SYMBOL WAND

### USB Host Types



HID KEYBOARD EMULATION



PORT 9B



ENABLE CONVERT TO CODE 39



IBM HAND-HELD USB

### Keyboard Wedge Host Types



IBM PC/AT and IBM PC COMPATIBLE



DISABLE CONVERT TO CODE 39

### RS-232 Host Types



STANDARD RS-232



NIXDORF RS-232 MODE B

### Carriage Return/Line Feed



SCAN OPTIONS



ICL RS-232



FUJITSU RS-232



<DATA>-<SUFFIX>



NIXDORF RS-232 MODE A



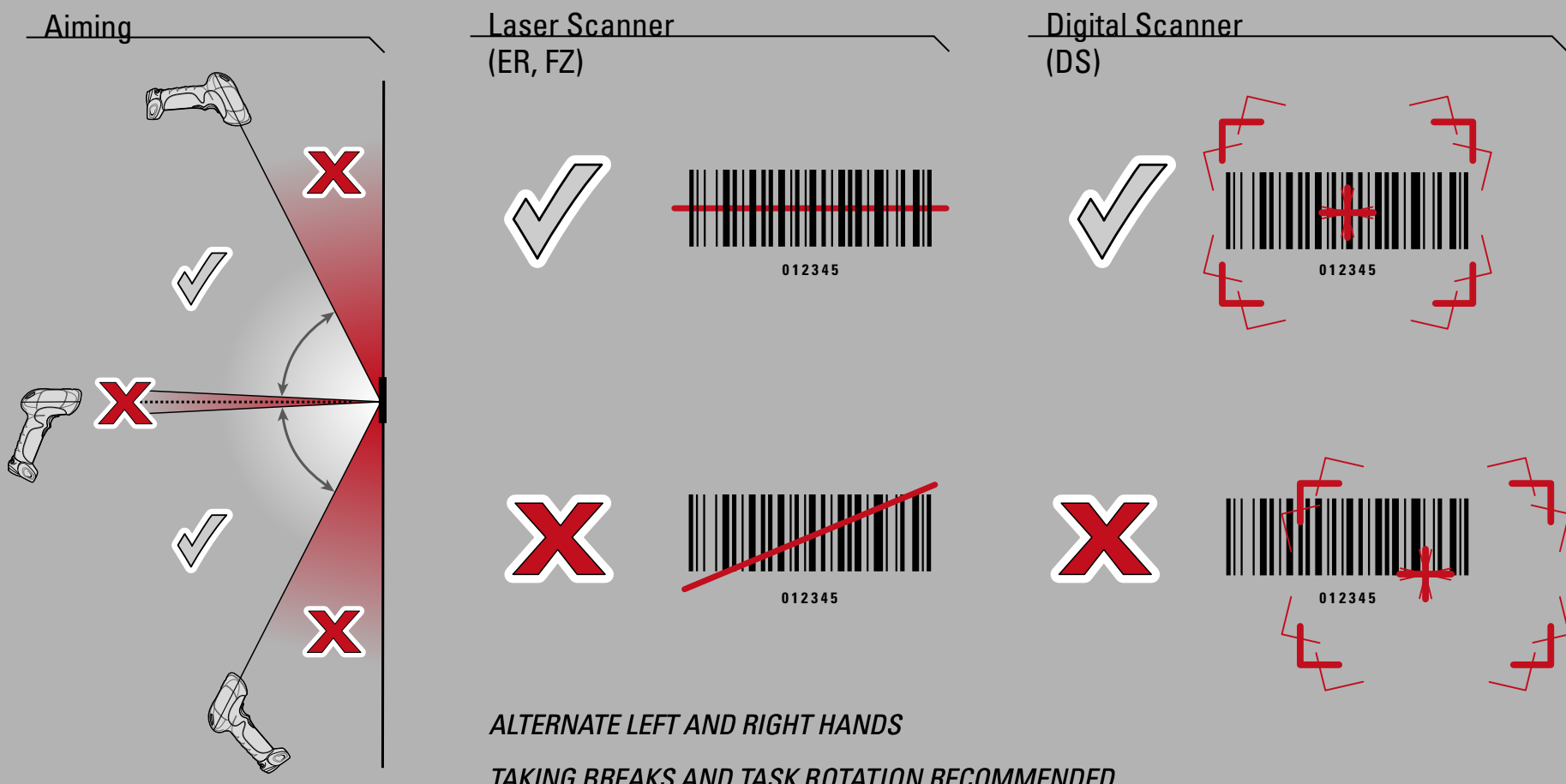
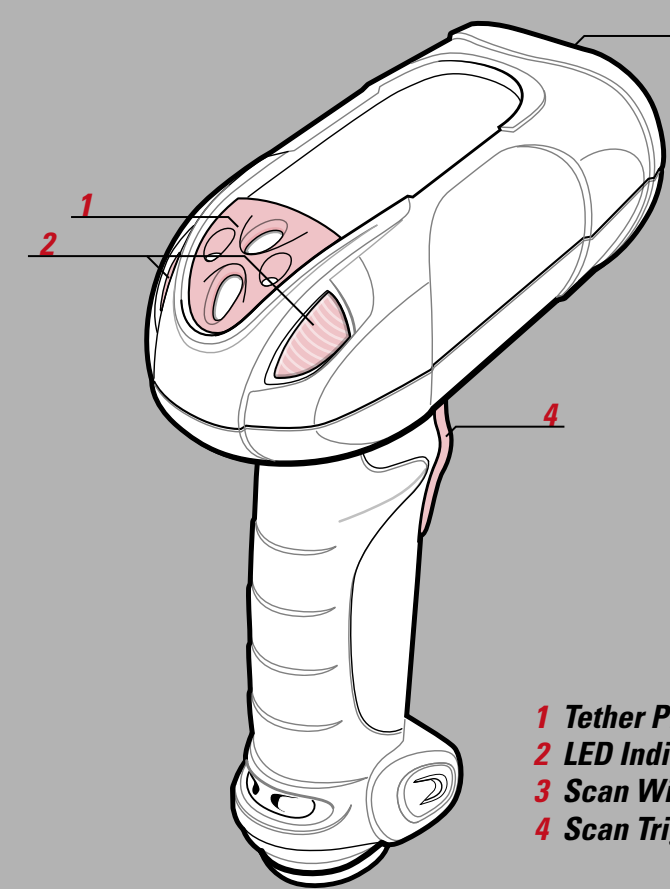
OPOS/JPOS



ENTER



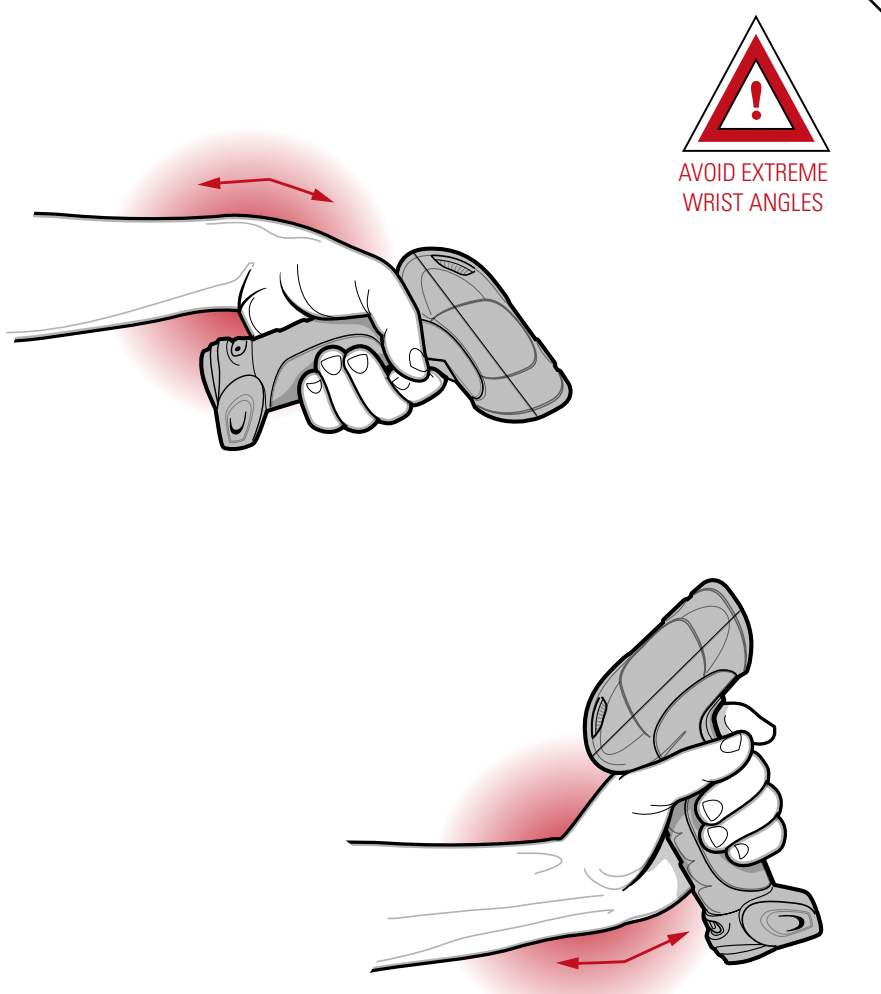
### Optimum Scanning Positions



### Optimum Upright Body Posture



### Avoid Extreme Wrist Angles



### Beeper Indications

Standard Use

Low/medium/high beep	Short high beep	4 long low beeps
Power up	Bar code decoded [if decode beeper enabled]	Transmission error detected; data is ignored

### Parameter Menu Scanning

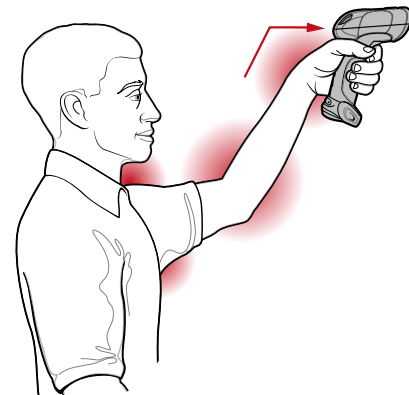
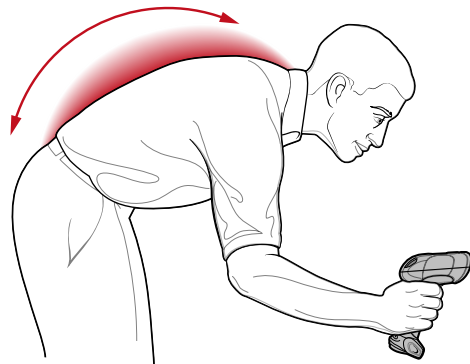
High/low/high/low beep	High/low beep	Low/high beep
Successful parameter setting	Correct programming sequence performed	Incorrect programming sequence or Cancel bar code scanned

### LED Indications

Off	Green	Red
Scanner is on and ready to scan, or no power to scanner	Bar code is successfully decoded	Transmission error

### Optimum Body Posture for Low Scanning

ALTERNATE LEFT AND RIGHT KNEES



### Optimum Body Posture for Extended Range Scanning



## LS/DS 3408 Recommended Usage Guide

72-67131-02 Revision A June 2004

<http://www.symbol.com/barcode>

SYMBOL TECHNOLOGIES, INC. One Symbol Plaza Holtsville, New York 11742-1300

Local Contact:

## Regulatory Information

©2004 SYMBOL TECHNOLOGIES, INC. All rights reserved.

Symbol reserves the right to make changes to any product to improve reliability, function, or design. Symbol does not assume any product liability arising out of, or in connection with, the application or use of any product, circuit, or application described herein. No license is granted, either expressly or by implication, estoppel, or otherwise under any patent right or patent, covering or relating to any combination, system, apparatus, machine, material, method, or process in which Symbol products might be used. An implied license exists only for equipment, circuits, and subsystems contained in Symbol products. Symbol and the Symbol logo are registered trademarks of Symbol Technologies, Inc. Other product names mentioned in this manual may be trademarks or registered trademarks of their respective companies and are hereby acknowledged.

Symbol Technologies, Inc., One Symbol Plaza, Holtsville, N.Y. 11742-1300, <http://www.symbol.com>

### Patents

This product is covered by one or more of the following U.S. and foreign Patents:  
U.S. Patent No. 4,593,186; 4,603,262; 4,607,156; 4,652,750; 4,673,805; 4,736,095; 4,758,717; 4,760,248; 4,806,742; 4,816,660; 4,845,350; 4,896,026; 4,897,532; 4,923,281; 4,933,538; 4,992,717; 5,015,833; 5,017,765; 5,021,641; 5,029,183; 5,047,617; 5,103,461; 5,113,445; 5,130,520; 5,140,144; 5,142,550; 5,149,950; 5,157,687; 5,168,148; 5,168,149; 5,180,904; 5,216,232; 5,229,591; 5,230,088; 5,235,167; 5,243,655; 5,247,162; 5,250,791; 5,250,792; 5,260,553; 5,262,627; 5,262,628; 5,266,787; 5,278,398; 5,280,162; 5,280,163; 5,280,164; 5,280,498; 5,304,786; 5,304,788; 5,306,900; 5,324,924; 5,337,361; 5,367,151; 5,373,148; 5,378,882; 5,396,053; 5,396,055; 5,399,846; 5,408,081; 5,410,139; 5,410,140; 5,412,198; 5,418,812; 5,420,411; 5,436,440; 5,444,231; 5,459,577; 5,489,891; 5,489,893; 5,489,949; 5,471,042; 5,478,998; 5,479,002; 5,479,002; 5,479,441; 5,504,322; 5,519,577; 5,528,821; 5,532,469; 5,543,610; 5,545,889; 5,552,592; 5,557,093; 5,578,810; 5,581,070; 5,589,679; 5,589,680; 5,608,202; 5,612,531; 5,619,028; 5,627,359; 5,637,852; 5,664,229; 5,668,803; 5,675,139; 5,693,929; 5,698,835; 5,705,800; 5,714,746; 5,723,851; 5,734,152; 5,734,153; 5,742,043; 5,745,794; 5,754,587; 5,762,516; 5,763,863; 5,767,500; 5,789,726; 5,789,731; 5,806,287; 5,811,785; 5,811,787; 5,815,811; 5,821,519; 5,821,520; 5,823,812; 5,828,050; 5,848,064; 5,850,076; 5,861,615; 5,874,720; 5,875,415; 5,900,817; 5,902,989; 5,907,146; 5,912,450; 5,914,478; 5,917,173; 5,920,058; 5,923,025; 5,928,420; 5,945,656; 5,945,659; 5,946,194; 5,959,285; 6,002,918; 6,021,947; 6,029,894; 6,031,830; 6,036,098; 6,047,892; 6,050,491; 6,053,413; 6,056,200; 6,065,678; 6,067,297; 6,082,621; 6,084,528; 6,088,482; 6,092,725; 6,101,483; 6,102,293; 6,104,620; 6,114,712; 6,115,678; 6,119,944; 6,123,265; 6,131,814; 6,138,180; 6,142,379; 6,172,478; 6,176,428; 6,178,426; 6,186,400; 6,188,681; 6,209,788; 6,209,789; 6,216,951; 6,220,514; 6,243,447; 6,244,513; 6,247,647; 6,308,061; 6,250,551; 6,295,031; 6,308,061; 6,308,892; 6,321,990; 6,328,213; 6,330,244; 6,336,587; 6,340,114; 6,340,115; 6,340,119; 6,348,773; 6,380,949; 6,394,355; 6,395,885; 6,341,584; 6,344,501; 6,359,483; 6,362,453; 6,363,700; 6,363,918; 6,370,478; 6,383,124; 6,391,250; 6,405,077; 6,406,581; 6,414,171; 6,414,172; 6,418,500; 6,419,548; 6,423,468; 6,424,035; 6,430,158; 6,430,159; 6,431,562; 6,436,104.  
Invention No. 55,536; 62,539; 69,060; 69,187; NI-068564 (Taiwan); No. 1,601,796; 1,907,875; 1,955,269 (Japan); European Patent 367,299; 414,281; 367,300; 367,298; UK 2,072,832; France 81/03938; Italy 1,138,713 rev. 06/02

### Service Information

Before you use the unit, it must be configured to operate in your facility's network and run your applications.

If you have a problem running your unit or using your equipment, contact your facility's Technical or Systems Support. If there is a problem with the equipment, they will contact the Symbol Support Center:

United States	1-800-653-5350 or 1-631-738-2400
Canada	905-629-7226
United Kingdom	0800 328 2424
Asia/Pacific	+65-6796-9600
Australia	1-800-672-906
Austria/Österreich	1-505-5794-0
Denmark/Danmark	7020-1718
Finland/Suomi	9 5407 580
France	01-40-96-52-21
Germany/Deutschland	6074-49020
Italy/Italia	2-484441
Mexico/México	5-520-1835
Netherlands/Nederland	315-271700
Norway/Norge	+47 2232 4375
South Africa	11-8095311
Spain/España	91 324 40 00 (Inside Spain) +34 91 324 40 00 (Outside Spain)
Sweden/Sverige	84452900
Latin America Sales Support	1-800-347-0178 (Inside US) +1-954-255-2610 (Outside US)
Europe/Mid-East Distributor Operations	
Contact local distributor or call	+44 118 945 7360

For the latest version of this guide go to: <http://www.symbol.com/manuals>.



72-67131-02 Revision A June 2004

## LS/DS 3408

<http://www.symbol.com/barcode>

### Ergonomic Recommendations

**Caution:** In order to avoid or minimize the potential risk of ergonomic injury follow the recommendations below. Consult with your local Health & Safety Manager to ensure that you are adhering to your company's safety programs to prevent employee injury.

- Reduce or eliminate repetitive motion
- Maintain a natural position
- Reduce or eliminate excessive force
- Keep objects that are used frequently within easy reach
- Perform tasks at correct heights
- Reduce or eliminate vibration
- Reduce or eliminate direct pressure
- Provide adjustable workstations
- Provide adequate clearance
- Provide a suitable working environment
- Improve work procedures.

### Regulatory Information

All Symbol devices are designed to be compliant with rules and regulations in locations they are sold and will be labeled as required.

Any changes or modifications to Symbol Technologies equipment, not expressly approved by Symbol Technologies, could void the user's authority to operate the equipment.

Antenna's, use only the supplied or an approved replacement antenna. Unauthorized antennas, modifications, or attachments could cause damage and may violate regulations.

### Radio Frequency Interference Requirements



**Note:** This equipment has been tested and found to comply with the limits for a Class B digital device, pursuant to Part 15 of the FCC rules. These limits are designed to provide reasonable protection against harmful interference in a residential installation. This equipment generates, uses and can radiate radio frequency energy and, if not installed and used in accordance with the instruction manual, may cause harmful interference to radio communications. However there is no guarantee that interference will not occur in a particular installation. If this equipment does cause harmful interference to radio or television reception, which can be determined by turning the equipment off and on, the user is encouraged to try to correct the interference by one or more of the following measures:

- Reorient or relocate the receiving antenna
- Increase the separation between the equipment and receiver
- Connect the equipment into an outlet on a circuit different from that to which the receiver is connected
- Consult the dealer or an experienced radio/TV technician for help.

### Radio Frequency Interference Requirements – Canada

This Class B digital apparatus complies with Canadian ICES-003. Cet appareil numérique de la classe B est conforme à la norme NMB-003 du Canada.

### Marking and European Economic Area (EEA)



### Statement of Compliance

Symbol Technologies, Inc., hereby declares that this device is in compliance with all the applicable Directives, 89/336/EEC, 73/23/EEC. A Declaration of Conformity may be obtained from <http://www2.symbol.com/doc>

### Laser Labels

In accordance with Clause 5, IEC 825 and EN60825, the following information is provided to the user:



<b>ENGLISH</b> CLASS 1 CLASS 1 LASER PRODUCT CLASS 2 CLASS 2 LASER PRODUCT LASER LIGHT DO NOT STARE INTO BEAM CLASS 2 LASER PRODUCT	<b>HEBREW</b> רמת 1 מוצר לייזר רמת 1 רמת 2 מוצר לייזר רמת 2 אור לייזר אין לכווין אל תוך הרום מוצר לייזר רמת 2
<b>DANISH / DANSK</b> KLASSE 1 KLASSE 1 LASERPRODUKT KLASSE 2 KLASSE 2 LASERLYF SE IKKE IND I STRÅLEN KLASSE 2 LASERPRODUKT	<b>ITALIAN / ITALIANO</b> CLASSE 1 PRODOTTO AL LASER DI CLASSE 1 CLASSE 2 LUCE LASER NON FISSARE IL RAGGIOPRODOTTO AL LASER DI CLASSE 2
<b>DUTCH / NEDERLANDS</b> KLASSE 1 KLASSE 1 LASERPRODUKT KLASSE 2 LASERLICHT NIET IN STRAAL STAREN KLASSE 2 LASERPRODUKT	<b>NORWEGIAN / NORSK</b> KLASSE 1 LASERPRODUKT, KLASSE 1 KLASSE 2 LASERLYS IKKE STIIR INN LYSSTRÅLEN LASERPRODUKT, KLASSE 2
<b>FINNISH / SUOMI</b> LUOKKA 1 LUOKKA 1 LASERTUOTE LUOKKA 2 LASERVALO ÄLÄ TUUJOTA SÄDETTÄ LUOKKA 2 LASERTUOTE	<b>PORTUGUESE / PORTUGUÉS</b> CLASSE 1 PRODUTO LASER DA CLASSE 1 CLASSE 2 LUZ LASER PRODUTO LASER DA CLASSE 2
<b>FRENCH / FRANÇAIS</b> CLASSE 1 PRODUIT LASER DE CLASSE 1 CLASSE 2 LUMIERE LASER NE PAS REGARDER LE RAYON FIXEMENT PRODUIT LASER DE CLASSE 2	<b>SPANISH / ESPAÑOL</b> CLASSE 1 PRODUCTO LASER DE LA CLASE 1 CLASSE 2 LUZ LASER NO MIRE FUJAMENTE EL HAZ PRODUCTO LASER DE LA CLASE 2
<b>GERMAN / DEUTSCH</b> KLASSE 1 LASERPRODUKT DER KLASSE 1 KLASSE 2 LASERSTRÄHLEN NICHT DIREKT IN DEN LASERSTRAHL SCHAUEN LASERPRODUKT DER KLASSE 2	<b>SWEDISH / SVENSKA</b> KLASSE 1 LASERPRODUKT KLASS 1 KLASSE 2 LASERLJUS STIRRA INTE MOT STRÅLEN LASERPRODUKT KLASS 2
<b>JAPANESE / 日本語</b> 第1種 レーザー製品 第2種 レーザー光線 光線を見つめないでください 2種 レーザー製品	<b>CHINESE / 简体中文</b> 1 类 1 类激光产品 2 类 激光切勿直视光束 2 类激光产品

### Laser Devices

Symbol products using lasers comply with US 21CFR1040.10, and IEC825-1:1993, EN60825-1:1994+A11:1996. The laser classification is marked on one of the labels on the product.

Class 1 Laser devices are not considered to be hazardous when used for their intended purpose. The following statement is required to comply with US and international regulations:

**Caution:** Use of controls, adjustments or performance of procedures other than those specified herein may result in hazardous laser light exposure.

Class 2 laser scanners use a low power, visible light diode. As with any very bright light source, such as the sun, the user should avoid staring directly into the light beam. Momentary exposure to a Class 2 laser is not known to be harmful.

### Scanner Labeling

**CAUTION:** CLASS 2 LASER LIGHT WHEN OPEN. AVOID DIRECT EYE EXPOSURE. LASER EN CAS D'OUVERTURE DE LA CLASSE DE PROTECTION LASER EN CAS D'OUVERTURE DE LA CLASSE DE PROTECTION LASER. VERBODEN DIRECTE OOGENICHT IN STRAAL AANZIJT. NIET DIRECT IN DEN LASERSTRAAL SCHIUEN. LASERPRODUKT DER KLASSE 2. COMPLIANT WITH EUROPEAN IS AND IEC 825 EXCEPT FOR DESIGNATION. PRODUCT TO LASER NOTICE No. 20, DATED JULY 28, 2001, AND THE SYMBOL TECHNOLOGIES, INC. 2001. APPROVED FOR THE CANADIAN MARKET BY THE CANADIAN LASER PRODUCT REGULATORY BOARD (CLPRB) AND THE CANADIAN LASER PRODUCT REGULATORY BOARD (CLPRB) IS NOT APPLICABLE. COMPLIANT WITH EUROPEAN IS AND IEC 825 EXCEPT FOR DESIGNATION. PRODUCT TO LASER NOTICE No. 20, DATED JULY 28, 2001, AND THE SYMBOL TECHNOLOGIES, INC. 2001. APPROVED FOR THE CANADIAN MARKET BY THE CANADIAN LASER PRODUCT REGULATORY BOARD (CLPRB) AND THE CANADIAN LASER PRODUCT REGULATORY BOARD (CLPRB) IS NOT APPLICABLE.

