

AQUI RF Crystal Mouse

AGM-9200

P R E F A C E

R&TTE Compliance

This equipment complies with all the requirements of the DIRECTIVE 1999/5/EC OF THE EUROPEAN PARLIAMENT AND THE COUNCIL OF 9 March 1999 on radio equipment and telecommunication terminal equipment and the mutual recognition of their conformity (R&TTE).

Safety

This equipment is designed with the utmost care for the safety of those who install and use it. However, special attention must be paid to the dangers of electric shock and static electricity when working with electrical equipment. All guidelines of this manual and of the computer manufacturer must therefore be followed at all times to ensure the safe use of the equipment.

Federal Communications Commission Radio (FCC) Statement

This equipment has been tested and found to comply with the limits for a Class B digital de-vice, pursuant to Part 15 of the FCC Rules. These limits are designed to provide reasonable protection against harmful interference in a residential installation. This equipment generates, uses, and can radiate radio frequency energy and if not installed and used in accordance with the instruction manual may cause harmful interference to radio communications. However, there is no guarantee that interference will not occur in a particular installation. If this equipment does cause harmful interference to radio or television reception, which can be determined by turning the equipment off and on, the user is encouraged to try to correct the interference by one or more of the following measures:

- Reorient or relocate the receiving antenna.
- Increase the separation between the equipment and receiver.
- Connect the equipment into an outlet on a circuit different from that to which the receiver is connected.
- Consult the dealer or an experienced radio TV technician for help.

Note: the manufacturer is not responsible for any radio or tv interference caused by unauthorized modifications to this equipment. such modifications could void the user's authority to operate the equipment.

Table of Contents

<i>R&TTE Compliance</i>	<i>i</i>
<i>Safety</i>	<i>i</i>
<i>Federal Communications Commission Radio (FCC) Statement</i>	<i>i</i>
INTRODUCING THE AQUI	1
<i>Package Contents</i>	<i>1</i>
<i>System Requirements</i>	<i>1</i>
<i>Features</i>	<i>2</i>
<i>AQUI RF Crystal Mouse Components</i>	<i>2</i>
INSERTING BATTERIES	3
SETTING UP THE AQUI	4
USING THE AQUI	6
INSTALLING THE iWARE SOFTWARE	7
USING THE SOFTWARE	11
<i>Power Savings Mode</i>	<i>12</i>
A WORD ABOUT ERGONOMICS	13
TROUBLESHOOTING	14
<i>Mouse not detected</i>	<i>14</i>
<i>Mouse doesn't work after changing batteries</i>	<i>14</i>
<i>Cursor doesn't move properly on the screen</i>	<i>14</i>

Congratulations on your purchase of the AQU I RF Crystal Mouse, which combines an innovative ergonomic design with all the features and convenience of wireless technology.

The AQU I RF Crystal Mouse has a scroll wheel/middle button that can be assigned various functions such as Web or word processor page scrolling, or launching applications such as Windows Explorer.

The AQU I needs no software to operate. The USB or PS/2 interface makes it completely Plug and Play in all supported operating systems.

The mouse uses two AA batteries. The receiver is powered by the USB or PS/2 interface on the PC.

Package Contents

After you have unpacked the AQU I RF Crystal Mouse, check the contents to make sure the following items are included.

- One mouse
- One RF receiver
- Two AA batteries (for the mouse)
- This quick guide
- USB to PS/2 adapter
- One floppy disk with application software

If any of the above items are missing or appear damaged, contact your dealer immediately. Do not throw the shipping carton away in case you need to ship your AQU I RF Crystal Mouse.

System Requirements

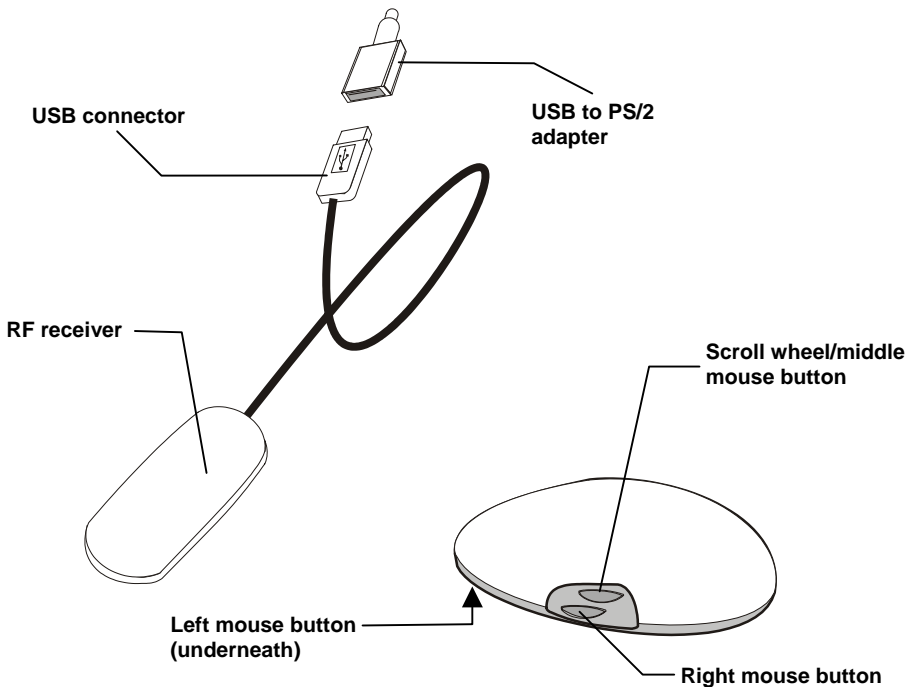
- Windows ME/2000/98/95/NT 4.0 or later
- USB or PS/2 port
- FDD drive (for application software installation)

Features

- Wireless radio frequency (RF) technology
- Programmable button emulates middle mouse button and provides many advanced functions such as scrolling in Web pages and text editors, opening programs, or selecting previous/next slide in PowerPoint
- Plug and Play compliant
- Compatibility: **PS/2 Interface:** Windows ME/2000/98/95/NT4.0
USB Interface: Windows ME/2000/98
- Compatible with PowerPoint and all other Windows-compatible presentation programs
- Compatible with IE and Netscape Web browsers

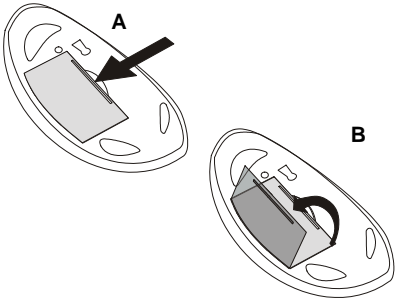
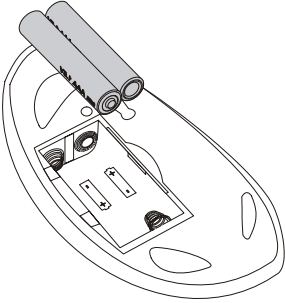
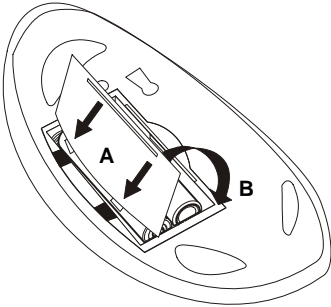
AQUI RF Crystal Mouse Components

The AQUI RF Crystal Mouse consists of a mouse and receiver. The following illustration shows the main components:



INSERTING BATTERIES

The AQUI RF Crystal Mouse requires two AA batteries to operate. Refer to the following instructions and illustrations for inserting the batteries:

<p>1. Turn the AQUI RF Crystal Mouse over.</p>	
<p>2. Press (A) with your finger and open the battery cover compartment in the direction of the arrow (B):</p>	 <p>The diagram shows two views of the battery compartment. In the first view, an arrow labeled 'A' points to a small tab on the battery cover. In the second view, the cover is swung open, and an arrow labeled 'B' indicates the direction of movement.</p>
<p>3. Insert two AA batteries into the compartment. Ensure that you orient the batteries according to the polarity markings inside the battery compartment.</p>	 <p>The diagram shows the battery compartment with two AA batteries inserted. The positive (+) and negative (-) terminals are visible, and the batteries are oriented to match these markings.</p>
<p>4. Slide the battery compartment cover into the slots (A) and swing the cover closed (B):</p>	 <p>The diagram shows the battery compartment with the cover being closed. Arrows labeled 'A' point to the cover being slid into place, and an arrow labeled 'B' indicates the cover being swung closed.</p>

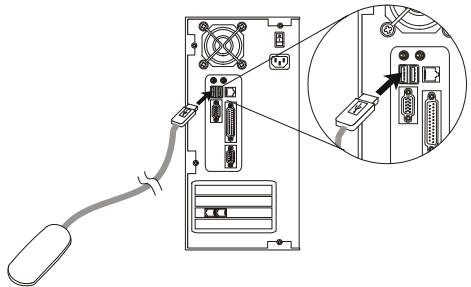
SETTING UP THE AQU I

Your AQU I RF Crystal Mouse receiver connects to the USB or PS/2 port on your computer.

Note! *Insert the batteries before connecting the AQU I RF Crystal Mouse. Refer to the previous section.*

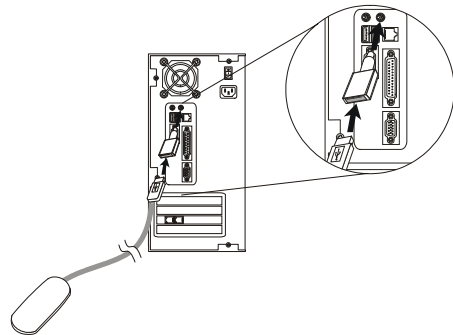
Refer to the following instructions and illustrations to connect the AQU I RF Crystal Mouse to your PC:

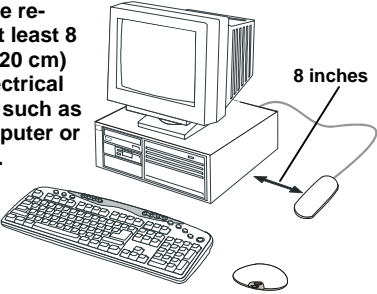
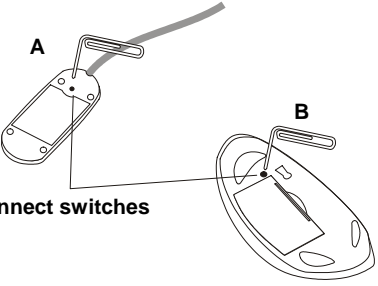
1. Turn off your computer.
2. Plug the USB connector on the RF receiver cable into the USB port on your computer.



If you want to connect to your computer's PS/2 port, use the USB to PS/2 adapter.

Connect the adapter to the RF receiver and then connect the receiver to the computer's PS/2 port as shown:

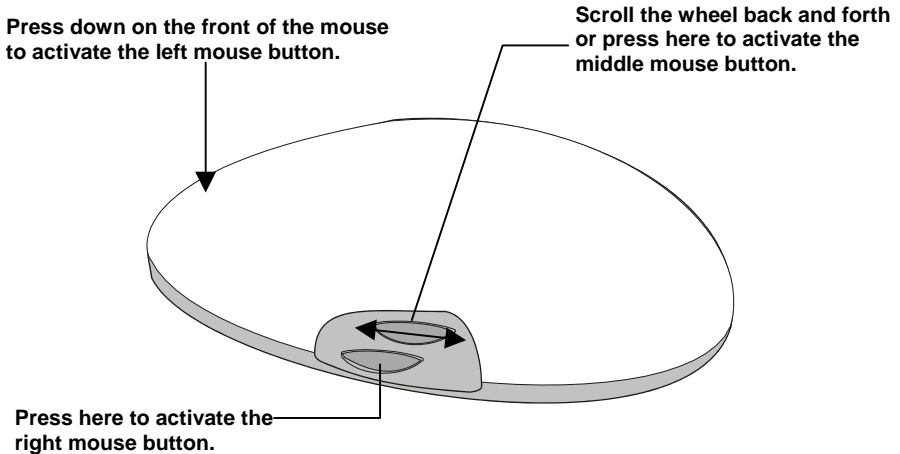


<p>3. Place the RF receiver and the mouse in the proper location for your computer.</p> <hr/> <p><i>Note! Refer to the section on ergonomics later in the quick guide for more information on setting up your workstation.</i></p>	<p>Place the receiver at least 8 inches (20 cm) from electrical devices such as the computer or monitor.</p> 
<p>4. Turn on the computer. If your OS is Windows 98, the Add New Hardware Wizard starts. Insert your Windows 98 CD into the CD-ROM drive. Follow the instructions on the screen. Use the <Tab> key to move among items on the screen and press <Enter> to make selections. If the OS is Windows ME/2000/XP, the USB driver is installed automatically.</p>	
<p>5. Use a bent paper clip to press the RF receiver connect switch (A), and then press the mouse connect switch (B).</p> <hr/> <p><i>Note! Repeat Step 6 when connecting the AQUI RF Crystal Mouse for the first time and after replacing the batteries.</i></p>	 <p>Connect switches</p> <hr/> <p><i>Note! You can also press the receiver connect switch (A) to awaken the computer from suspend mode.</i></p>

Ensure that the mouse is working. If the mouse does not respond to mouse movement, repeat Step 6 to ensure that a connection has been made. If it still is not working, refer to the Troubleshooting section at the end of this guide.

The innovative buttons on the AQUI RF Crystal Mouse make it easier than ever to use standard mouse functions.

The mouse is equipped with two buttons and a scroll wheel/middle button:

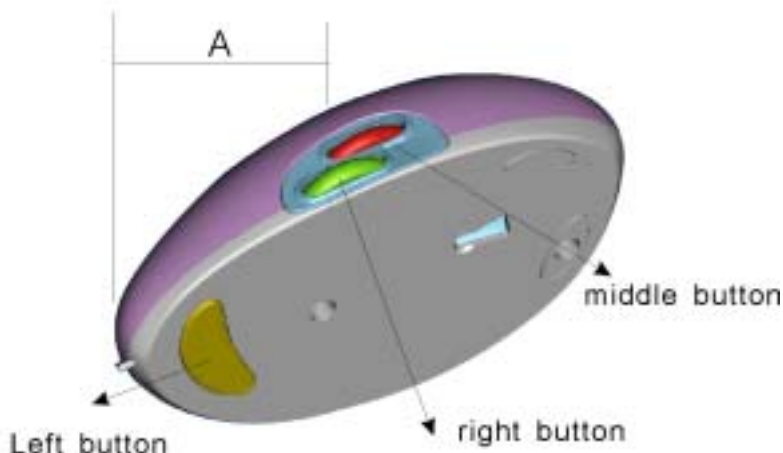


The AQUI RF Crystal Mouse's left button is activated by pressing down on the front of the mouse. Use your thumb to press the right mouse button. Use your thumb to press or scroll the scroll wheel/middle button.

Note! The AQUI has an 800-dpi sensor, which makes cursor sensitivity exceptionally high. If you are browsing the Web and make a selection with the right mouse button while accidentally moving the cursor, the selection will not be made. Ensure that you hold the cursor steady while making selections.

NOTICE:

- A、 Be sure not to put strength on the A area when you press the right button or the middle button, otherwise the right button or the middle button may not work properly in case you have accidentally press the left mouse button.



- B、 when the mouse is utilized on the dark surface (dark brown, black, etc), It may not swift agilely. This is the phenomenon of the blue optical mouse, all you need is to move the mouse onto a light surface .
-

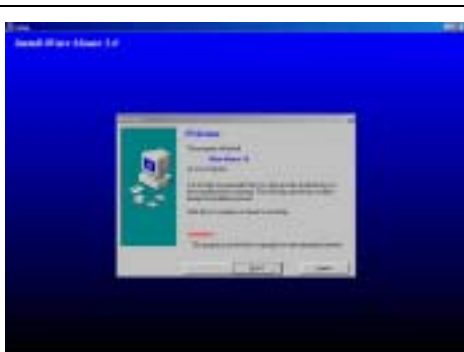
INSTALLING THE iWARE SOFTWARE

The AQUi RF Crystal Mouse comes with software to enhance its function. The software is located on the bundled floppy disk.

Note! Connect your AQUi RF Crystal Mouse before installing the software. Refer to the previous section.

Follow these instructions to install the software for the AQUi RF Crystal Mouse:

1. Insert the application software floppy disk into the floppy disk drive.
2. Click **Start, Run**. Type "A:\Setup.exe" in the Run Open text box (where A is the letter of your floppy drive) and click **OK**. The iWare mouse installation program starts.
3. Click **Next**.
4. Select "3 Button Wheel Mouse," and click **Next**.



5. Select "USB Port" or "PS/2 Port" and click **Next**.



6. Click **Next** to accept the default directory or browse to the desired directory.



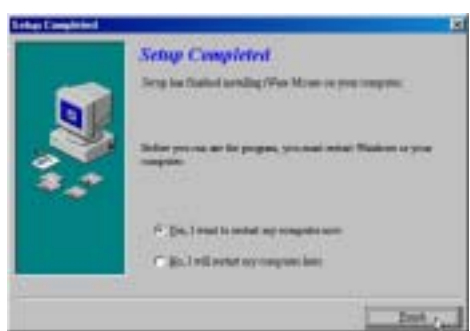
7. Click **Next** to accept the default folder or type a new folder name.



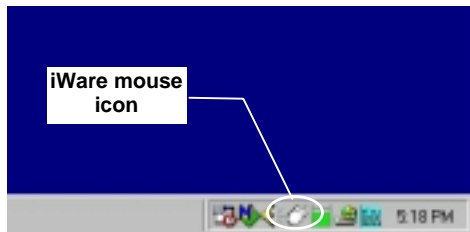
8. Click **Next** to start copying files to your computer.




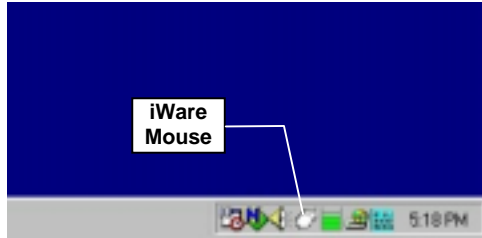
9. Click **Finish** to complete the installation.



10. When the computer has restarted, an iWare mouse icon appears in the taskbar.





After your computer restarts, the iWare Mouse icon  appears at the lower right side of your screen in the taskbar:



Double-click the iWare Mouse icon in the taskbar to open the iWare Mouse Setting screen. The following table describes the iWare Settings:

	<p>Wheel Tab</p> <p>Wheel Mode</p> <p>These two items define the operation of the scroll wheel:</p> <ul style="list-style-type: none"> • System default (Intelli-Mouse) mode: this option sets the wheel scrolling function as Microsoft's Intelli-Mouse standard. • Enhance scroll mode: enables enhanced scroll mode. <hr/> <p><i>Note! Experiment with these two modes; after some practice, choose the mode that best suits your work habits.</i></p> <p>Wheel Speed</p> <p>These items enable you to set how fast the page scrolls on the screen:</p> <ul style="list-style-type: none"> • Scroll # lines per scroll unit: sets the number of text lines that the page will scroll. • Scroll one page per scroll unit: sets the screen to scroll one complete page at a time.
--	-------------------------------------------------------------------------------------------------------------------------------------------------------------------------------------------------------------------------------------------------------------------------------------------------------------------------------------------------------------------------------------------------------------------------------------------------------------------------------------------------------------------------------------------------------------------------------------------------------------------------------------------------------------------------------------------------------------------------------------------------------------------------------------------------------------------------------------------------------------------------------------

	<p><u>Button Tab</u></p> <p>Enables you to set the middle button function. Choose the function from the drop-down list.</p>
	<p><u>About Tab</u></p> <p>Provides the iWare software version. Refer to this screen when updating the software to ensure that you have the most recent version.</p>

Power Savings Mode

The AQUi mouse features a power saving mode to save battery power. The optical sensor indicates the power saving mode. Refer to the following table:

Mouse in use	Optical sensor illuminates
1 second inactivity	Optical sensor dims to indicate power saving mode. The mouse re-activates full power mode every 20 milliseconds.
10 seconds inactivity	Optical sensor flashes quickly. The mouse re-activates full power mode every 100 milliseconds.
10 minutes inactivity	Optical sensor flashes slowly. The mouse re-activates full power mode every 500 milliseconds.
1 hour inactivity	<p>Optical sensor flashes slowly. The mouse re-activates full-power mode every 2.5 seconds.</p> <hr/> <p><i>Note! The mouse cursor is delayed slightly when you begin using the mouse after one hour of inactivity.</i></p> <hr/>

Ergonomics is the study of how people with their different physical characteristics and ways of functioning relate to their working environment (the furnishings and machines they use). The goal of Ergonomics is to incorporate comfort, efficiency, and safety into the design of keyboards, computer desks, chairs, and other items in an effort to prevent physical discomfort and health problems in the working environment.

If your budget permits, buy ergonomically designed furniture such as chairs, shelves, and desks that fit your physical characteristics and work methods.

You can create an ergonomically improved workstation without spending much money. Following are a few tips to help you work effectively without a lot of physical discomfort:

- Keep your forearms, wrists, and hands in a relaxed position, with your elbows at your side.
- Position the keyboard and mouse so that you do not have to reach for them.
- Don't strike the keys too hard; type with a soft touch.
- Keep your thighs parallel to the floor and your feet flat on the floor or on a footrest.
- Use a chair that provides good back support.
- Try to place the monitor so that there is little glare from the sun on the monitor.
- Walk around the room every hour.
- Every half-hour look away from the computer screen for a few minutes.
- Vary your tasks throughout the day.
- Avoid resting your wrists on sharp edges.

Mouse not detected

If the AQUi RF Crystal Mouse doesn't respond to activity, follow these steps:

1. Ensure that the receiver is properly connected to the USB or PS/2 port (refer to **SETTING UP THE AQUi** on page 4).
2. Ensure that the batteries have been installed correctly (refer to **INSERTING BATTERIES** page 3).
3. Ensure that there are no IRQ or I/O address conflicts. Refer to your operating system user's manual for information on resolving IRQ and I/O address conflicts.

Mouse doesn't work after changing batteries

If the AQUi RF Crystal Mouse doesn't respond to activity after replacing the batteries, follow these steps:

1. Ensure that you have established a connection between the RF receiver and the mouse (refer to **SETTING UP THE AQUi** on page 4).
2. Ensure that the batteries have been installed correctly (refer to **INSERTING BATTERIES** page 3).
3. Ensure that the batteries are not discharged.

Cursor doesn't move properly on the screen

If the cursor doesn't move or the motion is erratic, follow these steps:

1. Ensure that you have established a connection between the RF receiver and the mouse (refer to **SETTING UP THE AQUi** on page 4).
2. Change the position of the RF receiver. There should be a distance of at least 8 inches (20 cm) between the receiver and any electrical appliance (such as speakers, the monitor, or the computer).
3. Ensure that the mouse batteries are not discharged. If they are discharged replace them (refer to **INSERTING BATTERIES** page 3).