

**Voyager®**  
**Digital Wireless**  
**Auto-Pairing**  
FEATURING  
**WiSight®** technology

PATENT PENDING

**WVCMS130AP - DIGITAL WIRELESS**  
**COLOR CMOS CAMERA**

WVCMS130AP Features:

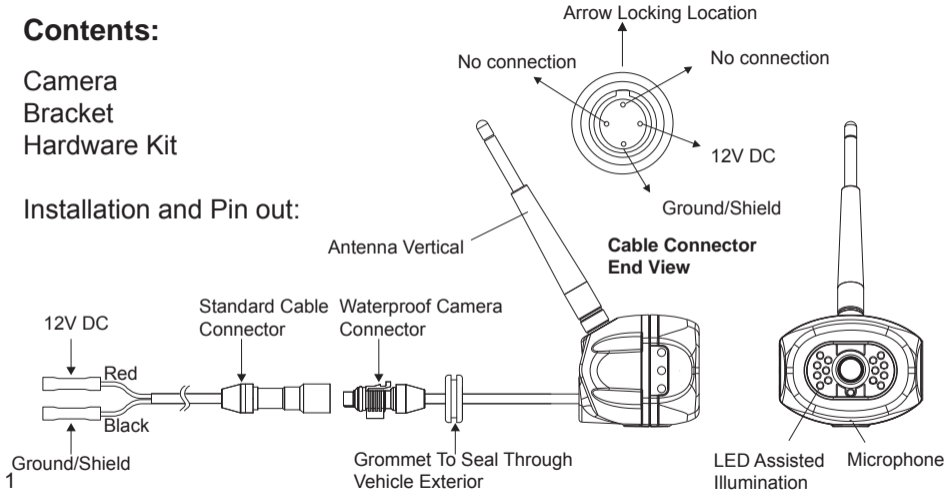
- **WiSight™** Digital Wireless Technology
- High Performance CMOS Sensor
- IR LED low Light Enhancement
- Waterproof (IP69K)
- Wide View Angle
- Integrated Audio Microphone

English

# Contents:

Camera  
Bracket  
Hardware Kit

## Installation and Pin out:



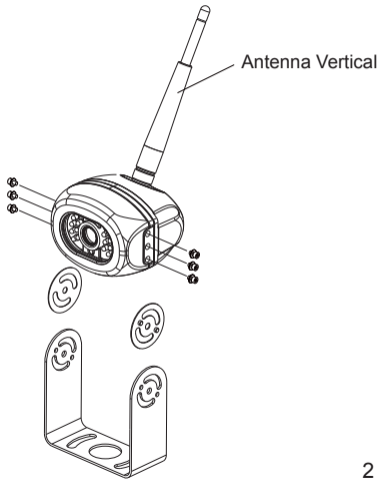
# Installation

## Screw For Use

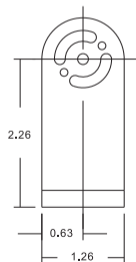
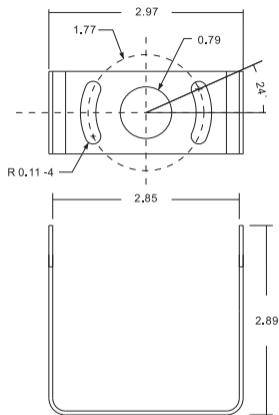
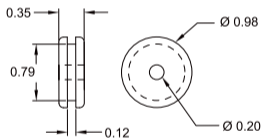
Hex Socket Head M4 X 6 mm Stainless screws

With Plain washer

Stainless Allen wrench

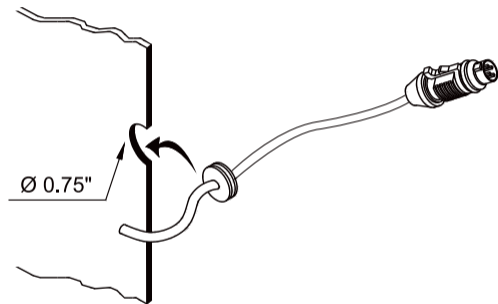


# Bracket Mtg. Hole Dimensions






Unit : Inch


## Recommended grommet Hole



Unit : Inch

## Camera to bracket hardware

Specifications	Q'ty
 Hex Socket Head M4 X6 mm Stainless screws with plain washer	6
 Tapping P/H w/washer M5 X 16mm Stainless	4
 Allen wrench	1

Specifications	Q'ty
 Washer 30 x2 x0.5 mm PP	2

# Specifications

Mounting Type	External type
Image sensor	1/3" CMOS camera
Resolution	520 TV lines
Min illumination	0 Lux with IR on
Water resistance	IP69K
View angle	100°(H), 74°(V), 137°(D)
Dimension	85.5(W) X 85.1(H) X 59.8(D)mm 3.36(W) X 3.35(H) X 2.35(D)Inch
Working temperature	-20°C ~ +70°C
Weight	Approx. 0.35kg / 0.77lbs

**Model: WVCMS130AP**

**FCC ID : HQXWVCMS130AP**

This device complies with Part 15 of the FCC Rules. Operation is subject to the following two conditions: (1) this device may not cause harmful interference, and (2) this device must accept any interference received, including interference that may cause undesired operation.

**Notice:**

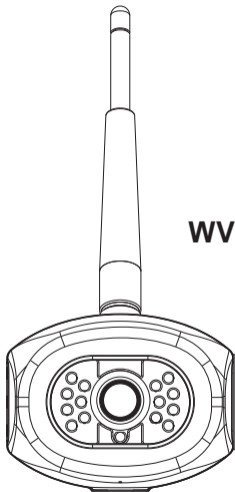
The changes or modifications not expressly approved by the party responsible for compliance could void the user's authority to operate the equipment.

**Important Note:**

To comply with the FCC RF exposure compliance requirements, the antenna(s) used for this transmitter must be installed to provide a separation distance of at least 20 cm from all persons and must not be co-located or operating in conjunction with any other antenna or transmitter. No change to the antenna or the device is permitted. Any change to the antenna or the device could result in the device exceeding the RF exposure requirements and void user's authority to operate the device.







**Voyager®**  
**Digital Wireless**  
**Auto-Pairing**  
FEATURING  
**WiSight®** technology

PATENTE PENDIENTE

**WVCMS130AP – CAMARA DIGITAL COLOR**  
**INALAMBRICA CMOS**

Características de WVCMS130AP

- Tecnología Digital Inalámbrica **WiSight™**
- Sensor CMOS Alto Rendimiento
- Mejora Luz LED IR baja
- Impermeable (IP69K)
- Angulo de Visión Ancho
- Audio Micrófono Integrado

Español

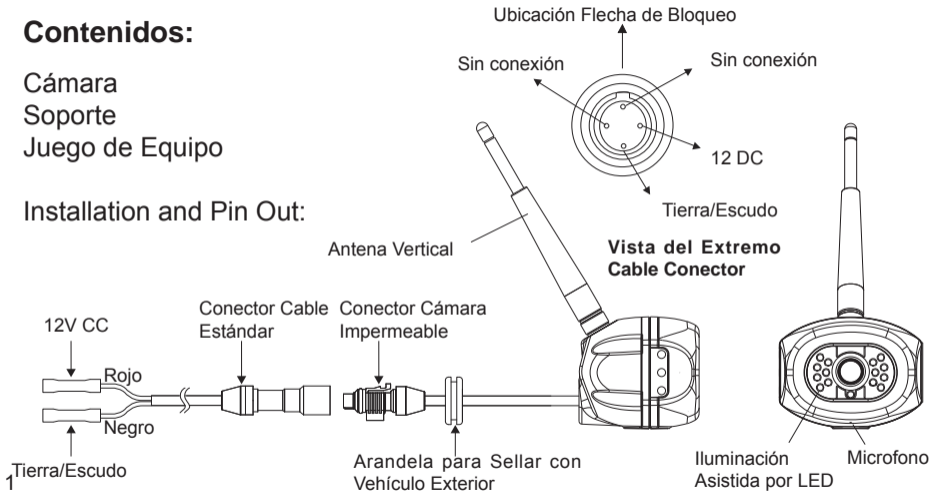
## Contenidos:

Cámara

Soporte

Juego de Equipo

Installation and Pin Out:



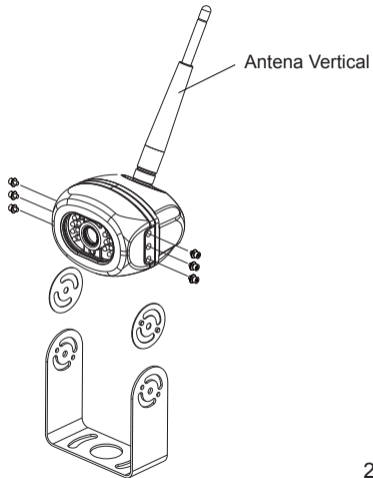
# Instalación

## Tornillo para Usar

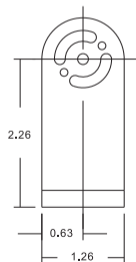
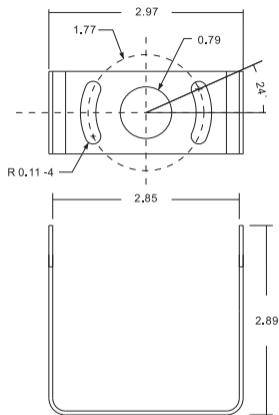
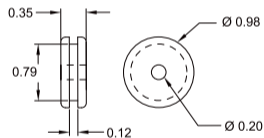
Tornillos Inoxidables Cabeza Hexagonal M4 X 6mm

Con arandela plana

Llave Allen inoxidable

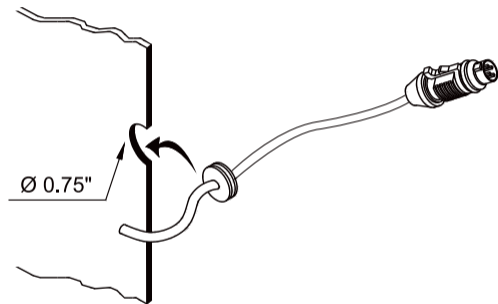


# Dimensiones de Agujeros de Soporte






Unidades : Pulgadas


## Agujero recomendado para arandela



Unidades : Pulgadas

## Equipo para asegurar cámara a soporte

Especificaciones	Cant.
 Tornillos inoxidables con cabeza hexagonal M4 X 6 mm con arandela plana	6
 Tapón inoxidable M5 X 16mm P/H c/arandela	4
 Llave Allen	1

Especificaciones	Cant.
 Arandela 30 X 2 X 0.5mm PP	2

# Especificaciones

Tipo de Soporte	Externo
Sensor de Imagen	Cámara 1/3" CMOS
Resolución	520 líneas TV
Iluminación Mínima	0 Lux con IR encendido
Resistencia al Agua	IP69K
Angulo de Visión	100°(H), 74°(V), 137°(D)
Dimensiones	85.5(W) X 85.1(H) X 59.8(D)mm 3.36(W) X 3.35(H) X 2.35(D)pulg
Temperatura de Trabajo	-20°C ~ +70°C
Peso	Aprox. 0.35kg / 0.77lbs

**Modelo: WVCMS130AP**

**FCC ID: HQXWVCMS130AP**

Este dispositivo cumple con la Parte 15 de las Normas de la FCC. El funcionamiento está sujeto a las dos condiciones siguientes: (1) este dispositivo no puede causar interferencias perjudiciales y (2) este dispositivo debe aceptar cualquier interferencia recibida, incluyendo interferencias que puedan causar un funcionamiento no deseado.

**Nota:**

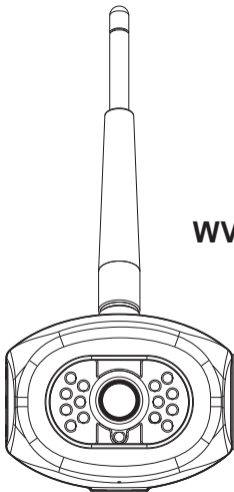
Los cambios o modificaciones no aprobados expresamente por la parte responsable del cumplimiento podrían anular la autoridad del usuario para operar el equipo.

**Nota importante:**

Para cumplir con los requisitos de exposición a RF de la FCC, la antena (s) utilizada para este transmisor debe instalarse para proporcionar una distancia de separación de al menos 20 cm de todas las personas y no debe ubicarse ni utilizarse junto con ninguna otra antena o transmisor. No se permite ningún cambio a la antena o al dispositivo. Cualquier cambio a la antena o el dispositivo podría resultar en que el dispositivo exceda los requisitos de exposición a RF e invalide la autoridad del usuario para utilizar el dispositivo. 6







PATENTE PENDENTE

**Voyager®**  
**Digital Wireless**  
**Auto-Pairing**

FEATURING

**WiSight®** technology

**WVCMS130AP - CÂMERA DIGITAL WIRELESS**  
**CMOS COLORIDA**

Características da WVCMS130AP

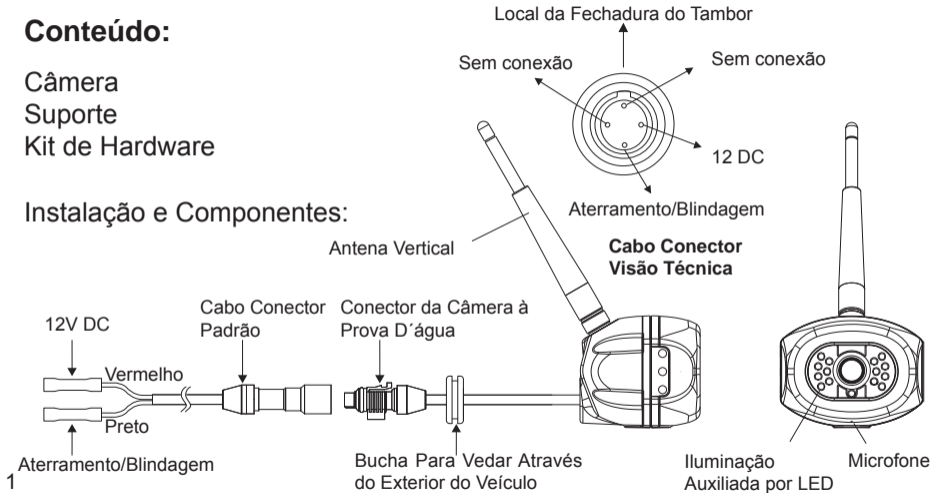
- **WiSight™** Tecnologia Wireless Digital
- Sensor CMOS de Alto Desempenho
- LED IR Luz Baixa Aprimorada
- À Prova D'água (IP69K)
- Ângulo de Visão Ampla
- Microfone com Áudio Integrado

Português

## Conteúdo:

Câmera  
Suporte  
Kit de Hardware

## Instalação e Componentes:



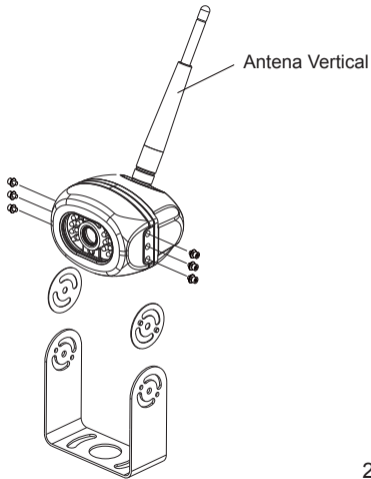
# Instalação

## Parafuso para Montagem

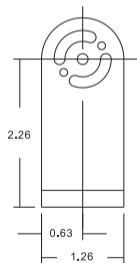
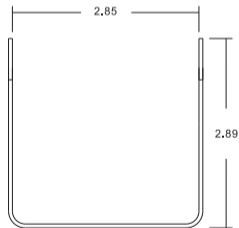
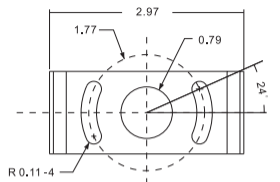
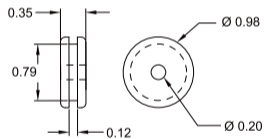
Parafusos Inox com Soquete Sextavado M4 X 6 mm

Com Arruela Simples

Chave Allen L Inox

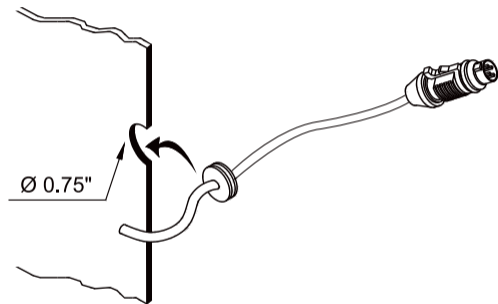


# Suporte Dimensões do Orifício








Unidade: Polegada


## Orifício anilhado Recomendado



Unidade: Polegada

## Câmera para suporte de hardware

Especificações	Qtd
  Parafusos Inox com Soquete Sextavado M4 X 6 mm com arruela simples	6
  Parafuso P/H c/arruela M5 X 16mm Inox	4
 Chave Allen L	1

Especificações	Qtd
 Arruela 30 X 2 X 0.5mm PP	2

# Especificações

Tipo de Montagem	Tipo Externo
Sensor de Imagem	1/3" câmera CMOS
Resolução	TV 520 linhas
Min iluminação	0 Lux com IR ligado
Resistência à água	IP69K
Ângulo de visão	100°(H), 74°(V), 137°(D)
Dimensões	85.5(L) X 85.1(A) X 59.8(D)mm 3.36(L) X 3.35(A) X 2.35(D)Polegadas
Temperatura de funcionamento	-20°C ~ +70°C
Peso	Aprox. 0.35kg / 0.77lbs

**Modelo: WVCMS130AP**

**FCC ID: HQXWVCMS130AP**

Este dispositivo está em conformidade com a Parte 15 das regras da FCC. Funcionamento está sujeito às duas condições a seguir: (1) este dispositivo não pode causar interferência nociva e (2) este dispositivo deve aceitar qualquer interferência recebida, incluindo interferências que possam causar operação indesejada.

**Nota:**

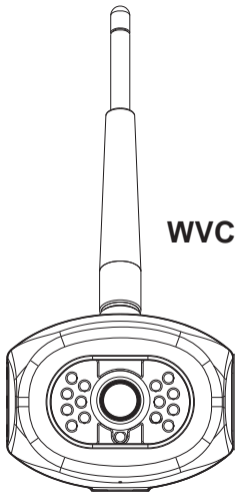
As alterações ou modificações não expressamente aprovadas pela parte responsável pela conformidade podem anular a autoridade do usuário para operar o equipamento.

**Nota importante:**

Para cumprir com os requisitos de conformidade de exposição RF da FCC, a antena (s) usada para este transmissor deve ser instalada para fornecer uma distância de separação de pelo menos 20 cm de todas as pessoas e não deve ser co-localizado ou operado em conjunto com qualquer outra antena ou transmissor. Nenhuma modificação a antena ou ao aparelho é permitido. Qualquer alteração a antena ou o dispositivo pode resultar no aparelho exceder os requisitos de exposição a RF e autoridade do usuário nula para operar o dispositivo.







**Voyager®**  
**Digital Wireless**  
**Auto-Pairing**  
FEATURING  
**WiSight®** technology

EN ATTENTE DE BREVET

**WVCMS130AP – CAMÉRA NUMÉRIQUE**  
**COULEUR CMOS SANS FIL**

Caractéristiques WVCMS130AP:

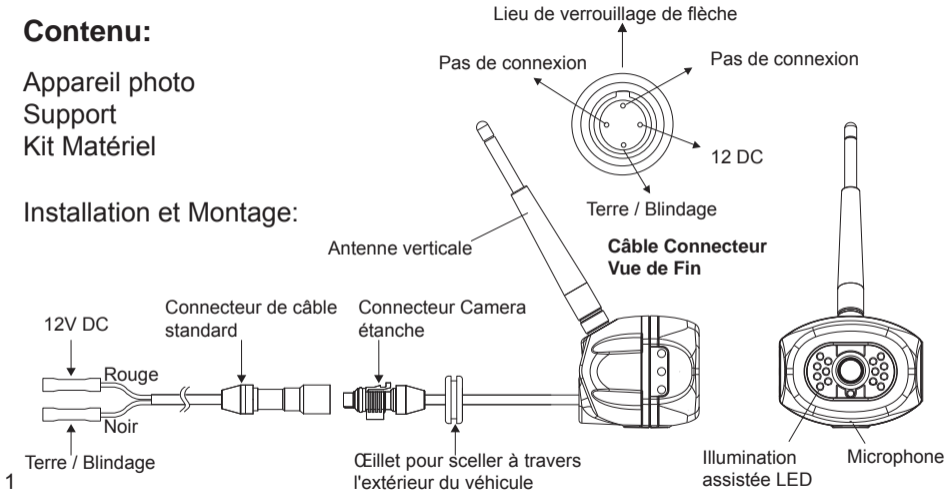
- Technologie numérique sans fil **WiSight™**
- Haute performance CMOS
- Amélioration faible lumière LED IR
- Imperméable (IP 69K)
- Angle de Vue Large
- Microphone Audio intégré

Français

## Contenu:

Appareil photo  
Support  
Kit Matériel

## Installation et Montage:

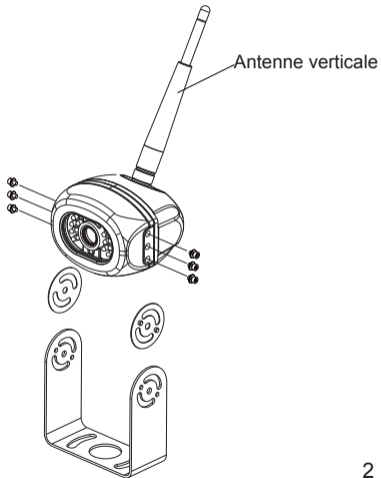


# Installation

## Hélice Pour utilisation

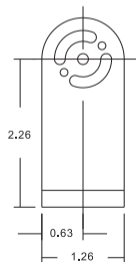
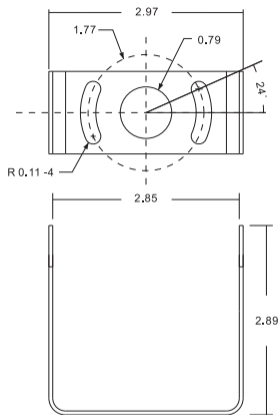
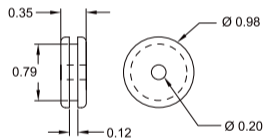
Vis à tête cylindrique M4 x vis en acier inox 6 mm  
avec Rondelle

Clé Allen en acier inoxydable



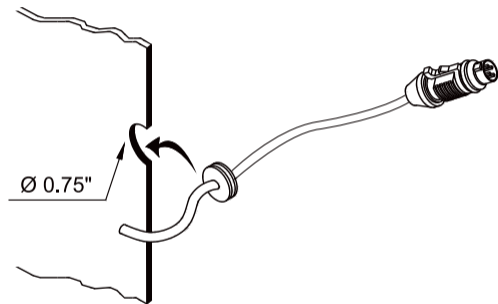
# Mtg. Support

## Dimensions des trous








Unité: Pouce


## Trou Œillet recommandé



Unité: Pouce

## Caméra au matériel de support

Caractéristiques	Qté
  Vis à tête cylindrique M4 x vis en acier inox 6 mm avec Rondelle	6
  Taraudage P / H avec rondelle M5 X 16mm Inoxydable	4
 Clé Allen	1

Caractéristiques	Qté
 Rondelle 30 X 2 X 0,5 mm PP	2

# Caractéristiques

Type de montage	Type externe
Capteur d'images	1/3 "CMOS
Résolution	520 lignes TV
Éclairage min	0 Lux avec IR
Résistance à l'eau	IP69K
Angle de vue	100°(H), 74°(V), 137°(D)
Dimension	85.5(W) X 85.1(H) X 59.8(D)mm 3.36(W) X 3.35(H) X 2.35(D)cm
Température de travail	-20°C ~ +70°C
Poids	Env. 0,35 kg / 0.77lbs

## Modèle: WVCMS130AP

### FCC ID: HQXWVCMS130AP

Cet appareil est conforme à la partie 15 des règles de la FCC. Son fonctionnement est soumis aux deux conditions suivantes: (1) ce dispositif ne doit pas causer d'interférences nuisibles, et (2) cet appareil doit accepter toute interférence reçue, y compris les interférences qui peuvent provoquer un fonctionnement indésirable.

#### Avis:

Les changements ou modifications non expressément approuvés par la partie responsable de la conformité pourraient annuler l'autorité de l'utilisateur à faire fonctionner l'équipement.

#### Remarque importante:

Pour se conformer aux exigences de conformité d'exposition RF de la FCC, l' (les) antenne (s) utilisée (s) pour cet émetteur doit (-vent) être installée (s) pour fournir une distance de séparation d'au moins 20 cm de toutes les personnes et ne doit (-vent) pas être co-localisées ou opérant en conjonction avec une autre antenne ou émetteur. Aucun changement à l'antenne ou au dispositif n'est autorisé. Tout changement à l'antenne ou au dispositif pourrait se traduire par un dépassement par l'appareil des exigences d'exposition aux radiofréquences et annuler l'autorité de l'utilisateur de faire fonctionner l'appareil.



Features and specifications subject to change without notice.  
Les caractéristiques et spécifications peuvent être modifiées.  
Características y especificaciones sujetas a cambios sin previo aviso.  
Características e especificações sujeitas a mudanças sem aviso prévio.

For further technical support call:  
Pour toute assistance technique plus détaillée, veuillez contacter le:  
Para recibir soporte técnico llame al:  
Se precisar de suporte técnico, ligue:

**1-877-305-0445**

MA2A1403001-1R