

# K2 Board

---

## User Guide



**System Level Solutions, Inc. (USA)**  
14100 Murphy Avenue  
San Martin, CA 95046  
(408) 852 - 0067

<http://www.slscorp.com>

Document Version:

1.2

Document Date:

July 2015

---

---

<b>1. Getting Started</b> .....	<b>1</b>
About this User Guide .....	1
Package Contents.....	1
K2 Board Installation.....	1
<b>2. K2 Board Graphical User Interface</b> .....	<b>2</b>
Installing the Google TV Remote App .....	2
Google TV Remote App Pairing Setting .....	2
Audio Settings.....	4
Ethernet Settings .....	5
Display Settings.....	6
Firmware Update.....	7
<b>3. VNC Server</b> .....	<b>10</b>
WiFi Connection .....	10
Ethernet Connection .....	10

## About this User Guide

This user guide describes about the **K2 Board** package content, hardware setup and working with the hardware. This user guide covers the following topics:

- Package Contents
- Application Overview

## Package Contents

The K2 Board package contains:

1. K2 Board
2. User Guide

## K2 Board Installation

The K2 board is easy to use and install. Connect the power cable (Micro USB power cable) to K2 board. Do not turn on switch. Plug HDMI connector on K2 board to TV. Turn on Power switch to K2 board. Android OS starts booting. See [Figure 1-1](#).

*Figure 1-1. Starting K2 Board*



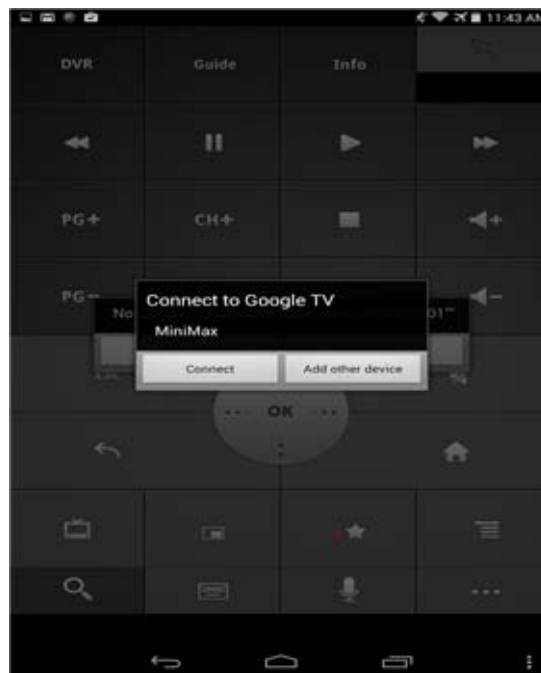
This section will get you acquainted with the Android interface of the **K2 Board**.

### Installing the Google TV Remote App

### Google TV Remote App Pairing Setting

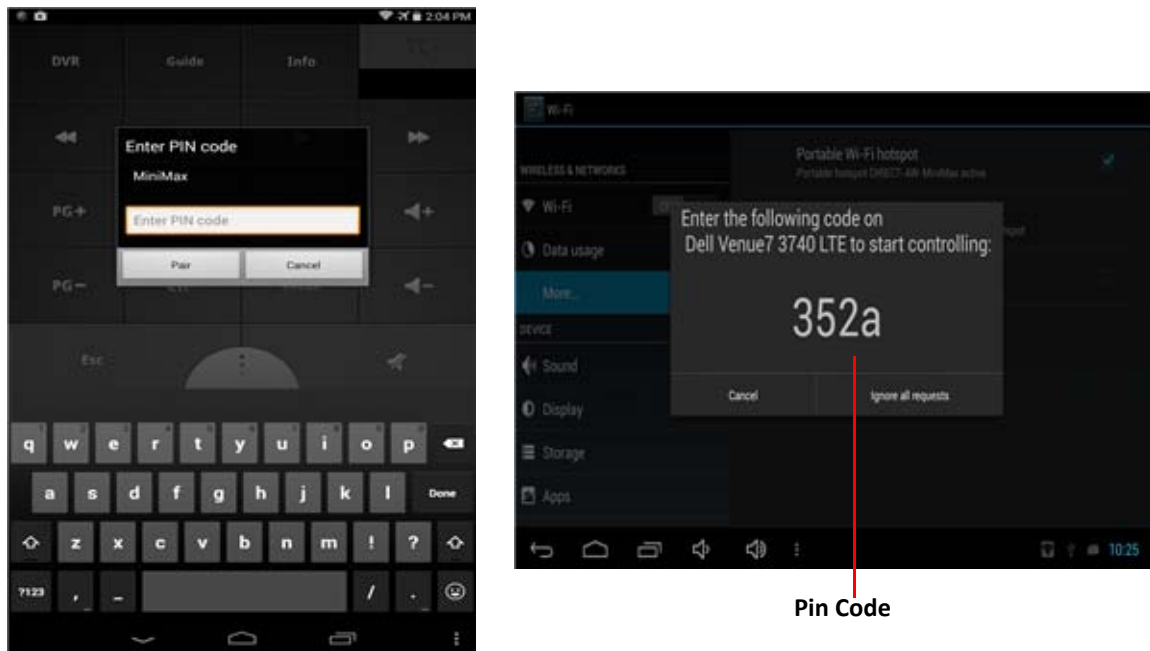
1. Install “**Google TV Remote**” application on personal **Android Phone/ Tablet**.
2. Connect personal **Android Phone/ Tablet** with “**DIRECT-AW-Minimax**” (**K2 board's SSID**) through **WiFi (Password - “12345678”)**.
3. Pair “**Google TV Remote**” application to K2 board.
4. Start “**Google TV Remote**” application.
5. The remote application starts search for compatible device. On successfully search of compatible device, a dialog box will appear as shown in [Figure 2-1](#).

*Figure 2-1. Connect to Google TV*



6. On touching **Connect**, Two different dialogs will appear on both devices (Personal **Android Phone/ Tablet** and **K2 board**) as shown in [Figure 2-2](#).

Figure 2-2. Different Devices (Personal Android Phone/ Tablet and K2 board)

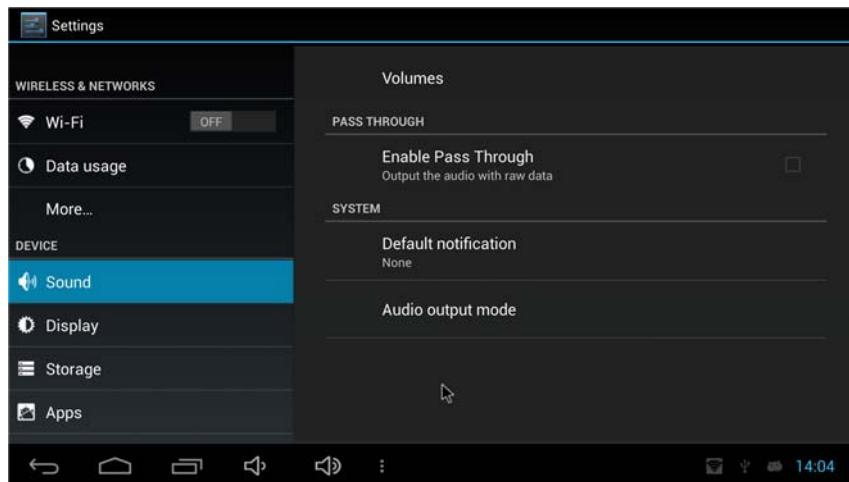


7. Enter pin code and touch on **Pair** and use **K2 Board GUI** through **"Google TV Remote"** application.

# Audio Settings

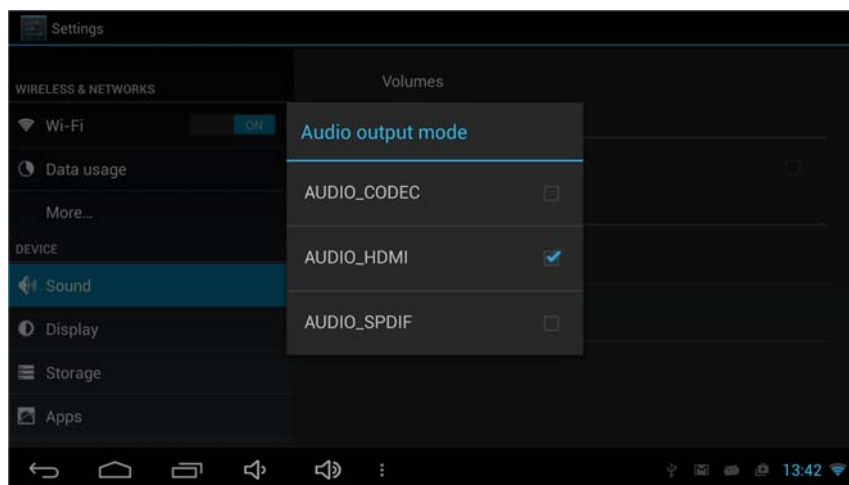
To get the Audio on your different devices user has to do the proper audio settings. Go to **Settings > Sound > Audio output mode**. See [Figure 2-3](#).

*Figure 2-3. Audio Settings*



Select any option for audio setting as shown in [Figure 2-4](#).  
To get audio on HDMI, select **AUDIO\_HDMI** option.  
To get audio on Head Phone, select **AUDIO\_CODEC** option.

*Figure 2-4. Audio Output Mode*

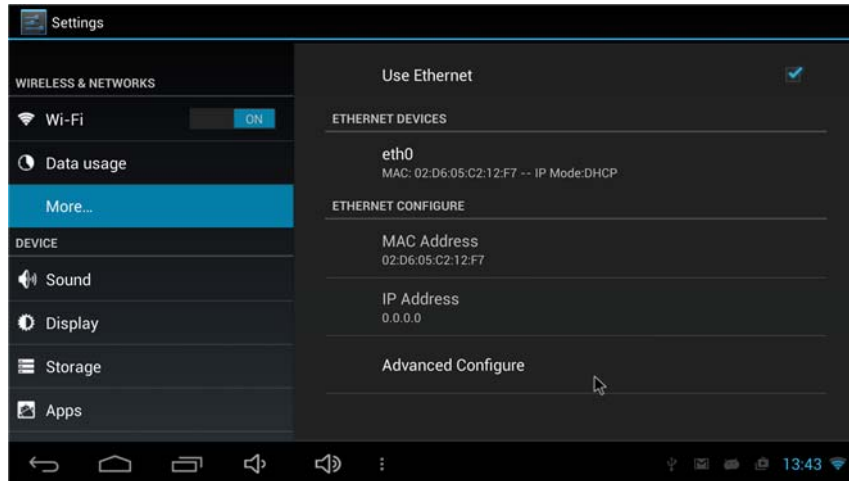


# Ethernet Settings

Please follow the steps below for Ethernet settings.

1. Go to **Settings > More... > Ethernet**.
2. By default, Ethernet option is checked. On connected of **Ethernet Cable**, K2 board gets IP through DHCP mode.
3. User can do advance configuration through **“Advance Configuration”** option available on same screen. See [Figure 2-5](#).

Figure 2-5. Ethernet Settings

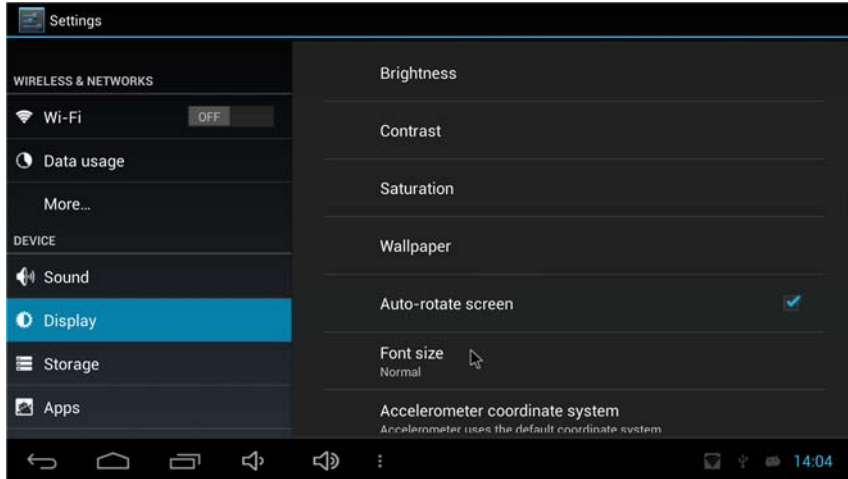


# Display Settings

Please follow the steps below for Display settings

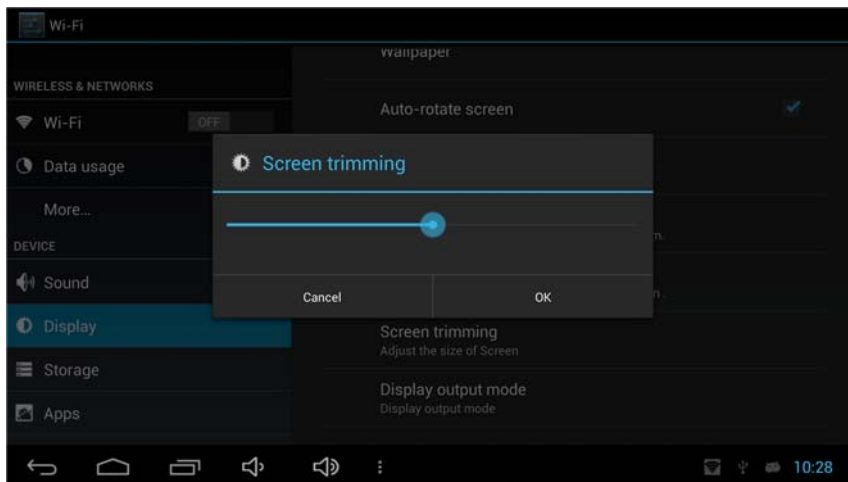
1. **Go to Settings > Display.**  
There are options available to change **Brightness, Contrast, Saturation and Wallpaper.** See [Figure 2-6.](#)

Figure 2-6. Display Settings



2. Using **“Screen trimming”** option, user can adjust the size of screen as shown in [Figure 2-7.](#)

Figure 2-7. Adjust Screen Size



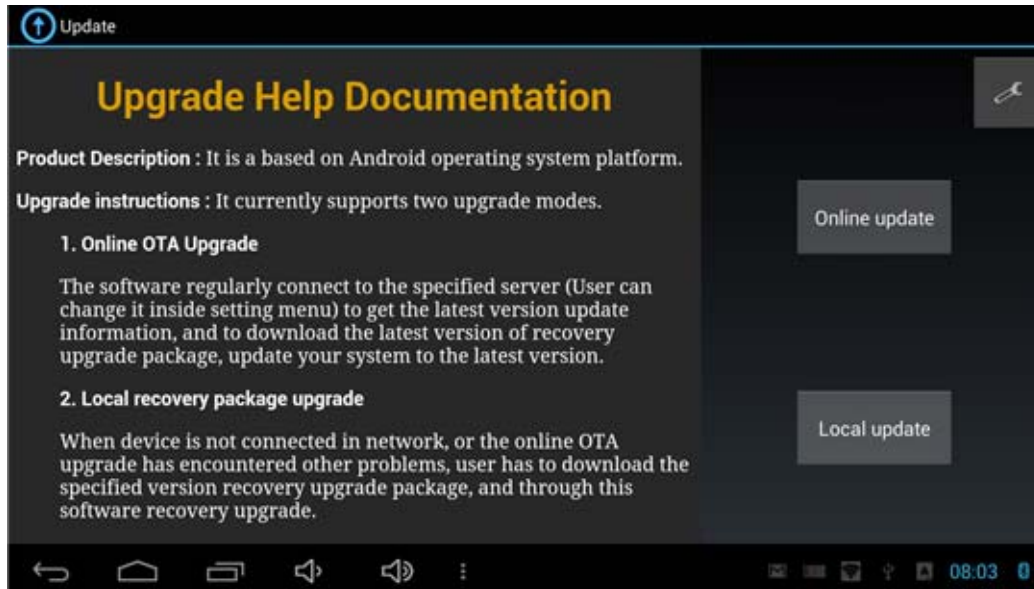


## Firmware Update

Please follow the steps below for Firmware update.

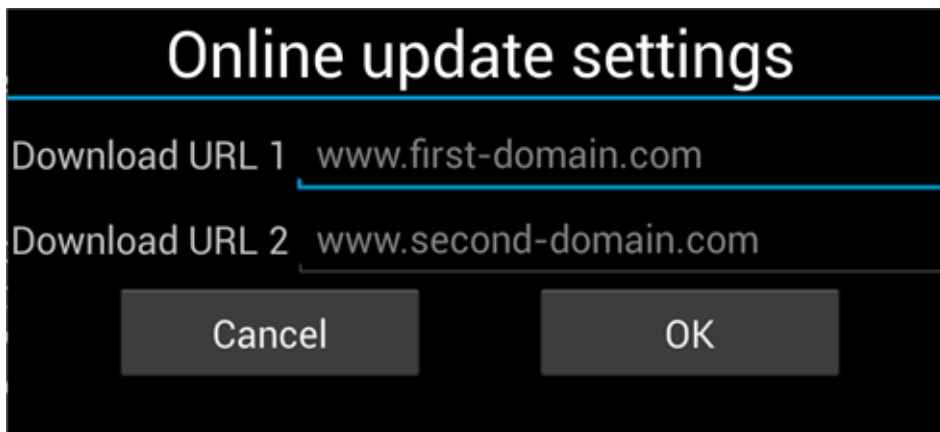
1. Pair and connect **Bluetooth Keyboard/Mouse** to K2 board successfully. (Bluetooth mouse recommended.)
2. **Go to settings > WiFi**. On **WiFi** and connect to **Router**. Check your internet connectivity on K2 board.
3. Start **“Update”** application. You will see the firmware update information as shown in [Figure 2-8](#).

Figure 2-8. Firmware Update Information



4. Click on **“Setting”** icon at top right corner. Setting dialog box will appear as shown in [Figure 2-9](#).

Figure 2-9. Online Update Settings

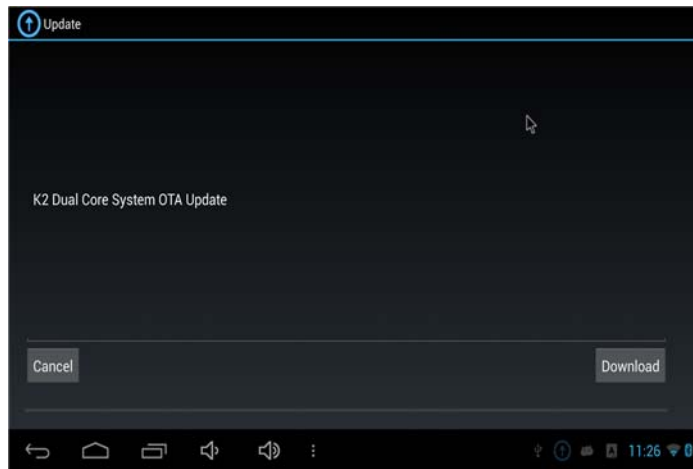


5. Enter **“[http://www.slscorp.com/download/online/k2dcs/ota\\_update.xml](http://www.slscorp.com/download/online/k2dcs/ota_update.xml)”** in Download URL 1 and Download URL 2 text boxes and click on **“OK”** button.

6. Now click on **“Online Update”** button. It will check new version if available, you will see the details of new update as shown in [Figure 2-10](#).

---

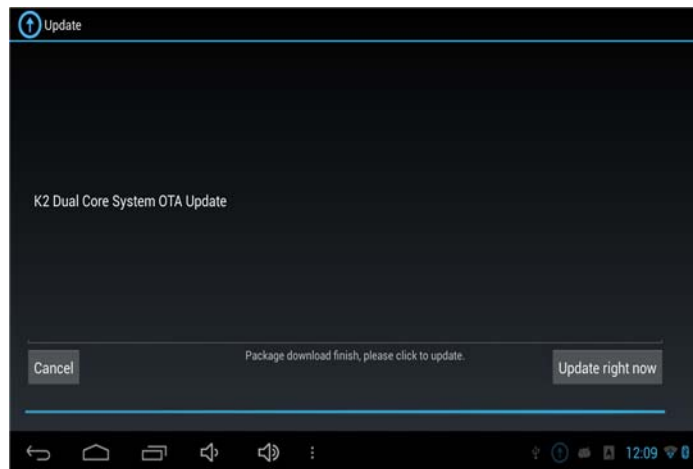
*Figure 2-10. Information Box When Firmware Update Available*



7. Click on **“Download”** button to start download process of new firmware. You will see the progress of download.
8. After completion of download. See [Figure 2-11](#).

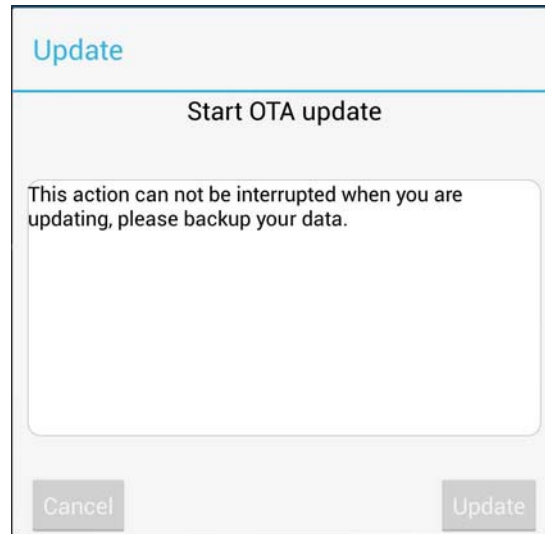
---

*Figure 2-11. Completed Download*



9. On clicking “**Update right now**”, update instruction dialog box as shown in [Figure 2-12](#).

*Figure 2-12. Start OTA Update*



10. Click on “**Update**” button to start update process.
11. K2 board automatically reboot and on next boot it will install new Android update.

This chapter describes the step to connect with the VNC server.

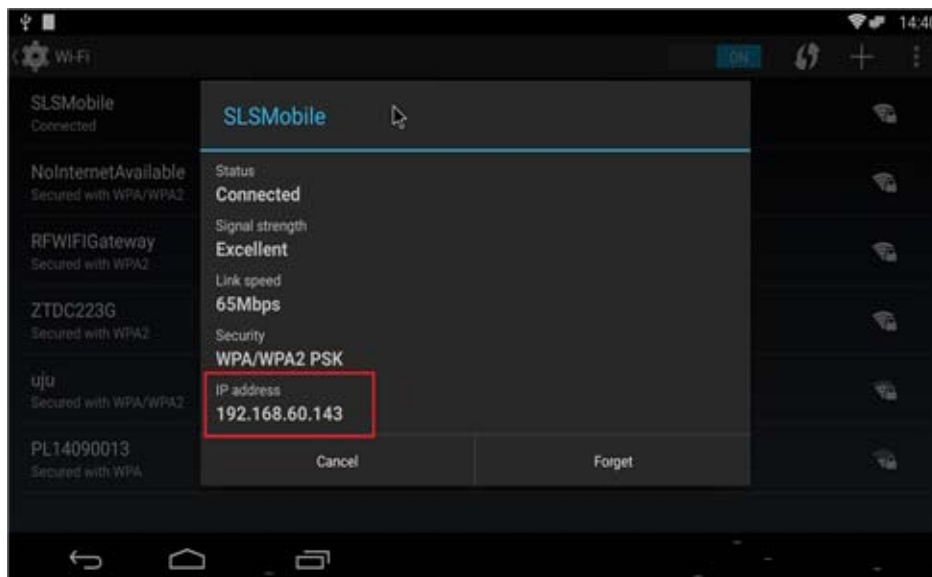
1. Start **WiFi/Ethernet** on K2 board.
2. Get the **IP address** of **WiFi/Ethernet**.

### WiFi Connection

Please follow the steps below to get IP address of WiFi connection.

1. Go to **Settings -> WiFi**.
2. Click on connected **SSID**. The connection details dialog will appear on screen as shown in [Figure 3-1](#).

*Figure 3-1. WiFi Connection Details*



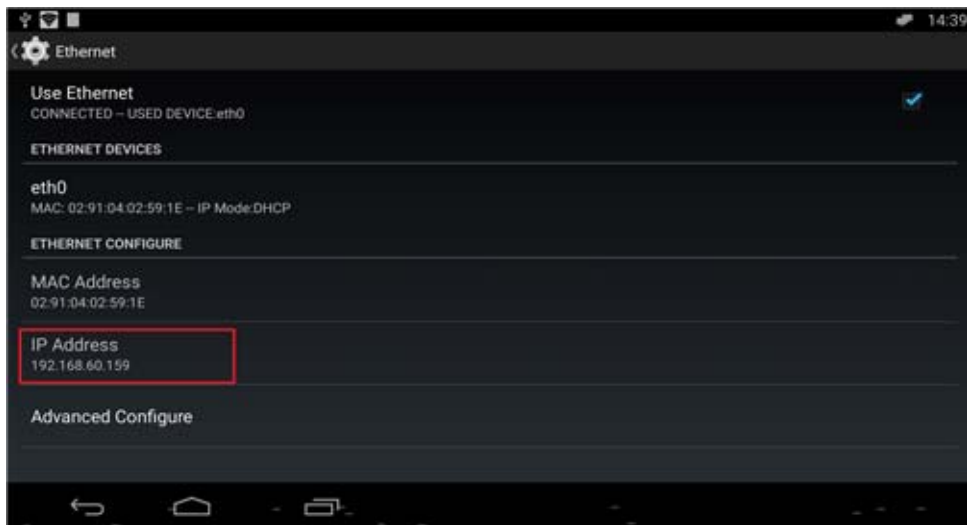
3. The connection details contain IP address **192.168.60.143**.

### Ethernet Connection

Please follow the steps below to get IP address of Ethernet connection.

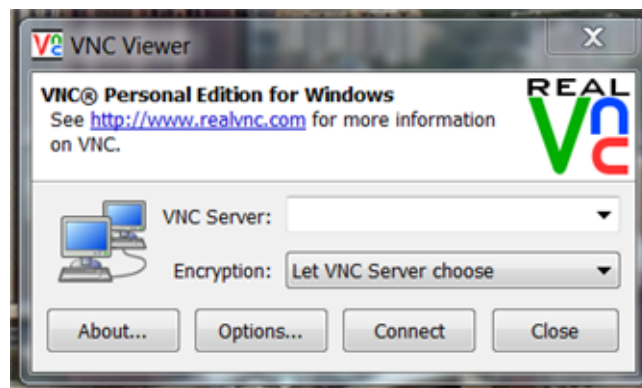
1. Go to **Settings -> More... -> Ethernet**.
2. The Ethernet settings screen will appear as shown in [Figure 3-2](#).

Figure 3-2. Ethernet Connection Details



3. The connection details contain IP address **192.168.60.143**
3. Open VNC viewer in your **PC/Laptop**. See Figure 3-3.

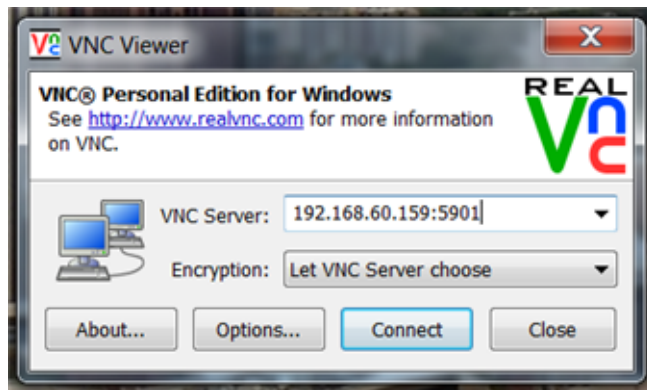
Figure 3-3. VNC Viewer



4. Enter the IP address in VNC viewer followed by colon and port number **5901** as shown in Figure 3-4. ex. **<ip\_address>:5901**

---

Figure 3-4. VNC Server Connection



- 
5. Click on **“Connect”** button and K2 board's screen will appear on your VNC viewer.



Make sure that your PC/Laptop and K2 board are connected in same LAN/Router.

## Environmental Details :

■ Operating Temperature	:	0°C to 40°C
■ Storage Temperature	:	-20°C to +60°C
■ Operating Humidity	:	10-80% RH @ 40°C (non condensing)
■ Storage Humidity	:	5-95% RH max @ 40°C (non condensing)

## Mechanical Details :

## Regulatory Conformance

Hereby, System Level Solutions Inc. declares that this device is in compliance with the essential requirements and other relevant provisions of Directive 1999/5/EC.

For the declaration of conformity, visit the Web site

<http://www.slscorp.com/>

**CE 0700**

Notice: Observe the national local regulations in the location where the device is to be used. This device may be restricted for use in some or all member states of the European Union (EU).

## **FCC Statement**

This device complies with part 15 of the FCC rules. Operation is subject to the following two conditions: (1) this device may not cause harmful interference, and (2) this device must accept any interference received, including interference that may cause undesired operation.

NOTE: The manufacturer is not responsible for any radio or TV interference caused by unauthorized modifications to this equipment. Such modifications could void the user's authority to operate the equipment.

NOTE: This equipment has been tested and found to comply with the limits for a Class B digital device, pursuant to part 15 of the FCC Rules. These limits are designed to provide reasonable protection against harmful interference in a residential installation. This equipment generates uses and can radiate radio frequency energy and, if not installed and used in accordance with the instructions, may cause harmful interference to radio communications. However, there is no guarantee that interference will not occur in a particular installation. If this equipment does cause harmful interference to radio or television reception, which can be determined by turning the equipment off and on, the user is encouraged to try to correct the interference by one or more of the following measures:

- Reorient or relocate the receiving antenna.
- Increase the separation between the equipment and receiver.
- Connect the equipment into an outlet on a circuit different from that to which the receiver is connected.
- Consult the dealer or an experienced radio/TV technician for help
- This device and its antenna(s) must not be co-located or operating in conjunction with any other antenna or transmitter.