

CAREU U1 Lite(WR) Vehicle Tracker User Guide

Version: 1.0

Reference No.: AVL-CU-U1L-00-1210UEN

Date: March 30, 2012



SYSTEMS & TECHNOLOGY CORP.

General Information

If any breakdown occurs due to the operation of the described product or users' improper handling in accordance with the instructions of the document, S&T shall be liable for the General Conditions based on the delivery of the described product and the content of the document. This product is not designed for the use of life support appliances, devices or systems and thence a malfunction of the product might reasonably be expected to make personal injury. S&T customers using or selling this product for such applications will take the risk on their own; therefore, it must be agreed S&T will be fully indemnified from any damages due to illegal use or resale. All information in this document is subject to change without notice at any time.

Disclaimer

The information, specification, images and photos in this user guide are subject to change without notice and without obligation to notify any person of such revision change.

Copyright

This user guide, including all photographs, illustrations and software, to name a few, is protected under international copyright laws, with all rights reserved. This document contains confidential, restricted and proprietary information that it has been exclusively prepared for the internal use of certain designated S&T employees, and may not be duplicated or distributed, in whole or in part, without the prior written consent of S&T's authorized delegates. Any illegal copying and disclosure of the document are absolutely prohibited, and violators are liable to the damages caused.

© Systems & Technology Corp. All Rights Reserved

Table of Contents

Chapter 1	Introduction	1
1.2	Scope.....	1
1.3	About CAREU U1 Lite(WR).....	1
1.4	Hardware Architecture.....	2
1.5	Related Document	2
Chapter 2	Taking a Tour of CAREU U1 Lite(WR).....	3
2.1	Dimensions.....	3
2.2	Front View	3
3.2	Pin Assignment	5
3.3	LED Indicator.....	6
3.4	USB Device Driver Installation.....	7
3.5	Device Configuration	13
3.6	Communication Settings	17
3.7	GPS Tracking Configurations	18
3.8	Firmware Upgrade	19
Chapter 4	Technical Specification	21
Chapter 5	Regulation	23

Chapter 1 Introduction



Thank you for purchasing the CAREU U1 Lite(WR) vehicle tracker and we are very pleased to introduce you our tracker's features and applications.

The CAREU U1 Lite(WR) vehicle tracker is an all-in-one GPS tracking device to deliver positioning messages and help back-end users to proceed with the analysis and the applications of vehicle transport, management, anti-theft, security, tracking, to name a few.

1.1 Features

- Cost effective and easy installation
- SMS, GPRS TCP/UDP, USSD, FTP communications
- Geofence reports
- Remote configuration
- Real-time tracking (time, distance interval or intelligent mode, and heading)
- Intelligent power management
- Power low/lost alarm
- Journey report wireless downloads
- GSM/GPRS simultaneously
- Mileage report
- User-defined reports
- Firmware upgrade over the air (via GPRS from FTP)
- Up to 120,000 data logs

1.2 Scope

This document will guide you to start the CAREU U1 Lite(WR) Vehicle Tracker. However, as this document contains basic device configuration only, please see the CAREU U1 Lite(WR) Protocol Document for the advanced information.

1.3 About CAREU U1 Lite(WR)

The CAREU U1 Lite(WR) vehicle tracker transmits the wireless signals such as location, peripheral and vehicle control data to a control center. The onboard GPS receiver provides users with location data including speed, direction, mileage and altitude. It uses an onboard GSM/GPRS module to accomplish wireless transmission.

A microcontroller can probe location and command data at regular intervals, derive actions from location, peripheral and control data, and execute such actions. Among the best features of the CAREU U1 Lite(WR) vehicle tracker, in particular, they transmit data in ASCII mode or binary mode. Peripheral data indicates the status of various peripherals connected to and/or controlled by the device. The peripherals include, but not limited to, door locks/unlocks, starter interrupt, ignition, battery, engine and panic button.

The firmware in the device applies intelligent filtering to overcome coverage limitations for both GPS and GSM/GPRS networks. Motion sensor controls the status of the device, whether in sleep, idle or fully-powered mode, and thereby controls the amount of current

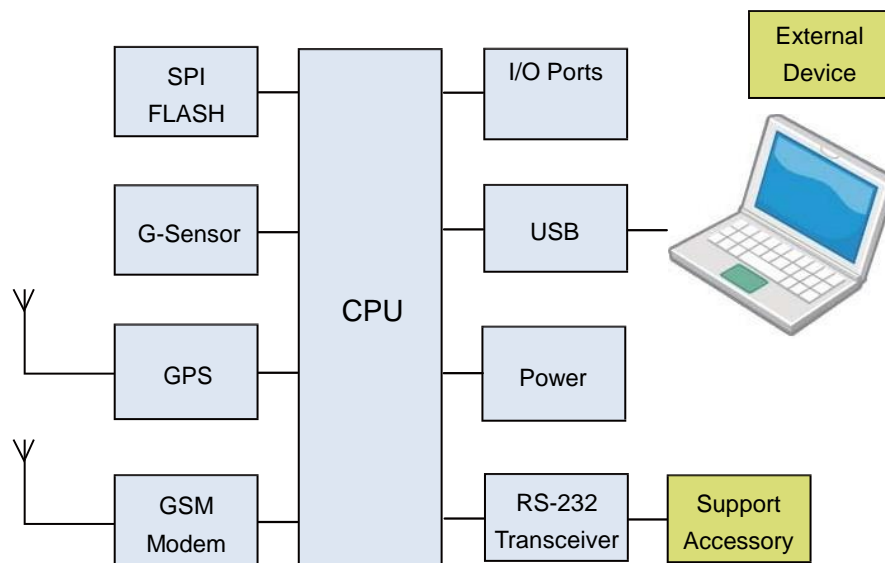
consumed by the device. Backup battery and tamper sensing GPS Antennas primarily indicate the loss of Main Power and the interruption of GPS antenna connectivity. The device supports over-the-air firmware upgrade to deliver additional functionality without physically touching the device once installed. The firmware of the CAREU U1 Lite(WR) can be upgraded through USB without disassembling the device.

In consideration of technicality and marketability, the CAREU U1 Lite(WR) has so many excellences to be competitive enough to stand out in the market. With regard to the technicality, the CAREU U1 Lite(WR) saves and records more data even under inactive communication status, and it also provides better power management, coexistence of GPRS and SMS modes.

1.4 Hardware Architecture

As hardware is concerned, the CAREU U1 Lite(WR) is comprised of a micro-controller, regulator, GPS receiver, GSM/GPRS modem, G-Force sensor, flash memory data storage, I/O interface and LED status indicators.

- Users can connect PC's HyperTerminal to the Diagnostic/setting port for the AVL configuration.
- G-Sensor for car accident prevention, car tow-away warning and power management.
- The audio interface supports hand-free phone call.
- GPIO that connects to any customer monitoring points by door switch, anti-thief or actuators.
- The A/D input that connects the analog signal sensor to the AVL, such as the fuel or temperature sensor.



1.5 Related Document

[1] CAREU U1 Lite(WR) Protocol Document

Chapter 2 Taking a Tour of CAREU U1 Lite(WR)

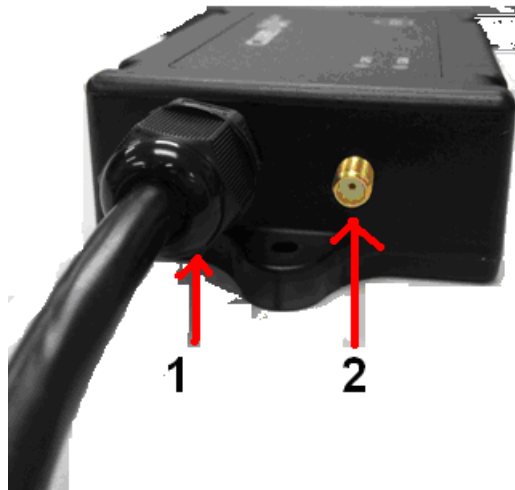
This chapter will guide you to the major connectors of the CAREU U1 Lite(WR) vehicle tracker.

2.1 Dimensions

Dimensions (L x W x H): 72mm x 90mm x 33mm



2.2 Front View



No.	Name	Description
1	PWR & I/O	Power Connector for Car Battery and Input/Output Connector including basic I/O
2	GPS	SMA Connector for GPS External Antenna

Chapter 3 Getting Started with CAREU U1 Lite(WR)

To install the CAREU U1 Lite(WR) vehicle tracker, follow the instructions below for basic operations.

3.1 Hardware Installation

1. SIM Card Installation

- Remove the cap. Insert SIM card into SIM card slot.



2. GPS Antenna Connection

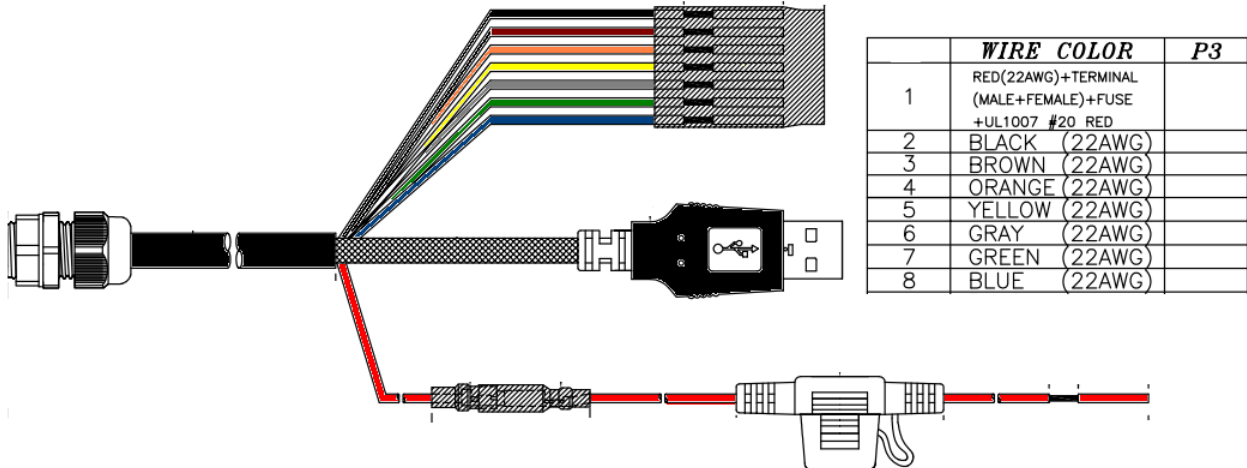
- Connect the GPS antenna to the SMA connector jack on the front side of the device (circled as the illustration below) by completely screwing the GPS antenna's plug connector.
- It is recommended that a matching torque 7-10 inch pounds (80-110 N.cm) should be used for the SMA connector



3. G-Sensor Installation Consideration

The device uses a 3-axis G-Force sensor to detect the vehicle motion and the impact on the vehicle. The X, Y and Z axis definition will be affected by the location of device installation.

3.2 Pin Assignment



1. PWR Connector and I/O Connector

Pin#	Signal Name	Description	I/O	Remark
1	DC IN	Power supply input	I	DC Vin = +8 ~ +30V
2	GND	Signal ground	—	
3	Ignition	Ignition(ACC) Input	I	DC Vin = +30 ~ +7V (Active high)
4	Output1	Open-Collector	O	I _{max} = 300mA
5	Input 1	Negative Trigger Input 1	I	DC VIN = +6V ~ 0V (Low Active)
6	Output 2	Open-Collector Output 2	O	I _{max} = 300mA
7	Input 2	Negative Trigger Input 2	I	DC VIN = +6V ~ 0V (Low Active)
8	Analog Input	Analog Input 1	I	DC VIN = +30V ~ 0V

3.3 LED Indicator

1. GPS LED Indicator



Power Mode	GPS Status	GPS LED
Power Off	N/A	Off
Low Power	N/A	Off
Full Power	Acquiring	Flash Red (5 Times/Second)
Full Power	Tracking	Solid Red

2. GSM LED Indicator



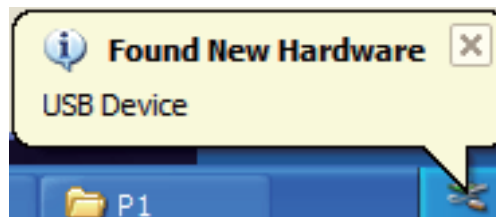
Power Mode	GSM/GPRS Status	GSM LED
Power Off	N/A	Off
Low Power	N/A	Off
Full Power	Acquiring	Flash Red (3 Times/Second)
Full Power	Registered	Solid Red

3.4 USB Device Driver Installation

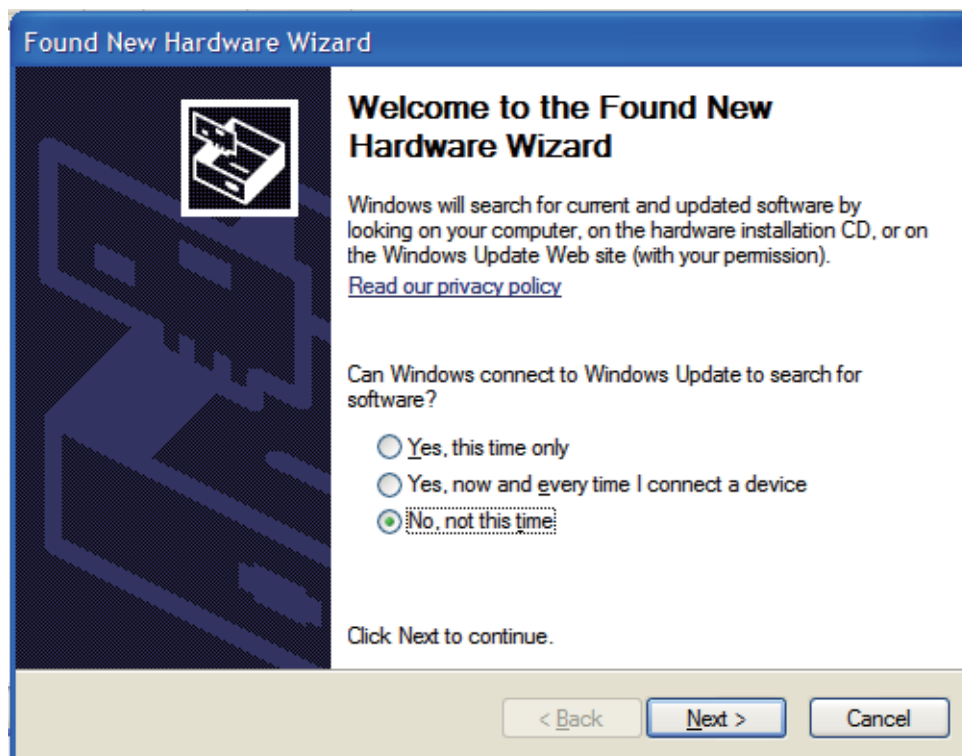
The CAREU U1 Lite(WR) communicates with your host computer by either RS-232 or USB interface. In some newer editions of Windows XP, the CAREU U1 Lite(WR) device can be installed as a "virtual COM port" device whereby the CAREU U1 Lite(WR) would automatically access Windows XP's inbox USB drivers. While in some other earlier editions of Windows XP, you would need to manually install the USB driver for the CAREU U1 Lite(WR) device. In the following content of this section, you will be guided to how the installation can be done in both cases.

To install the device driver for the CAREU U1 Lite(WR), connect the CAREU U1 Lite(WR) device to your system with an USB cable as mentioned in Mini USB Cable Connection on section 3.1. As soon as the connection is made between the CAREU U1 Lite(WR) and your computer, a balloon appears above the notification area saying an USB device is found.

Click on this balloon to start the **[Found New Hardware]** wizard.

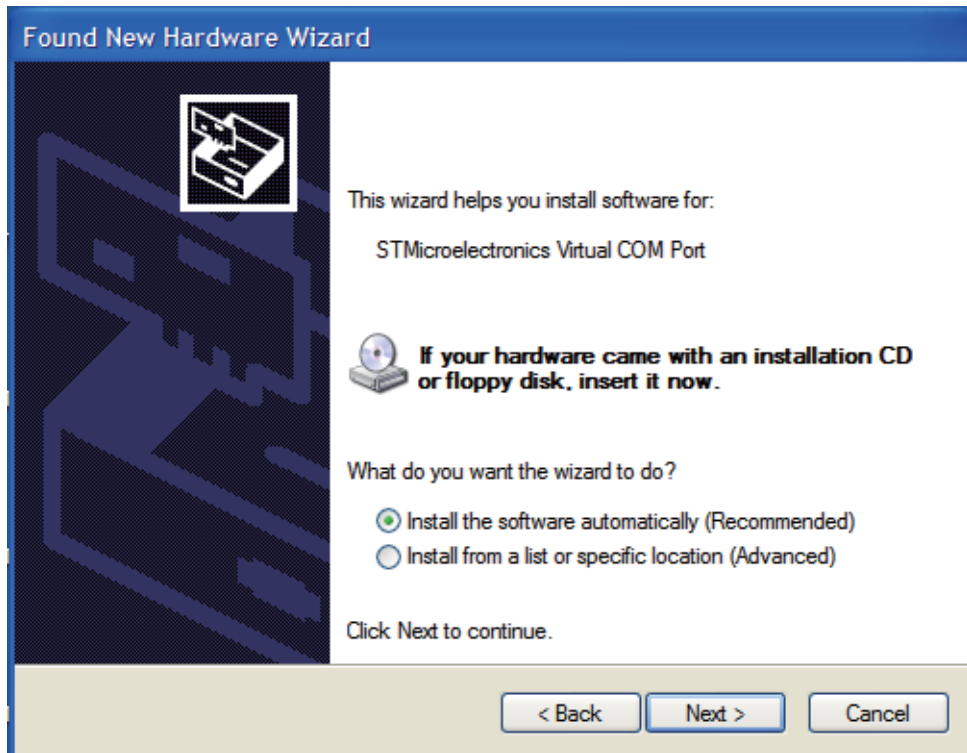


Select **No, not this time**. Press the **Next** button to proceed.

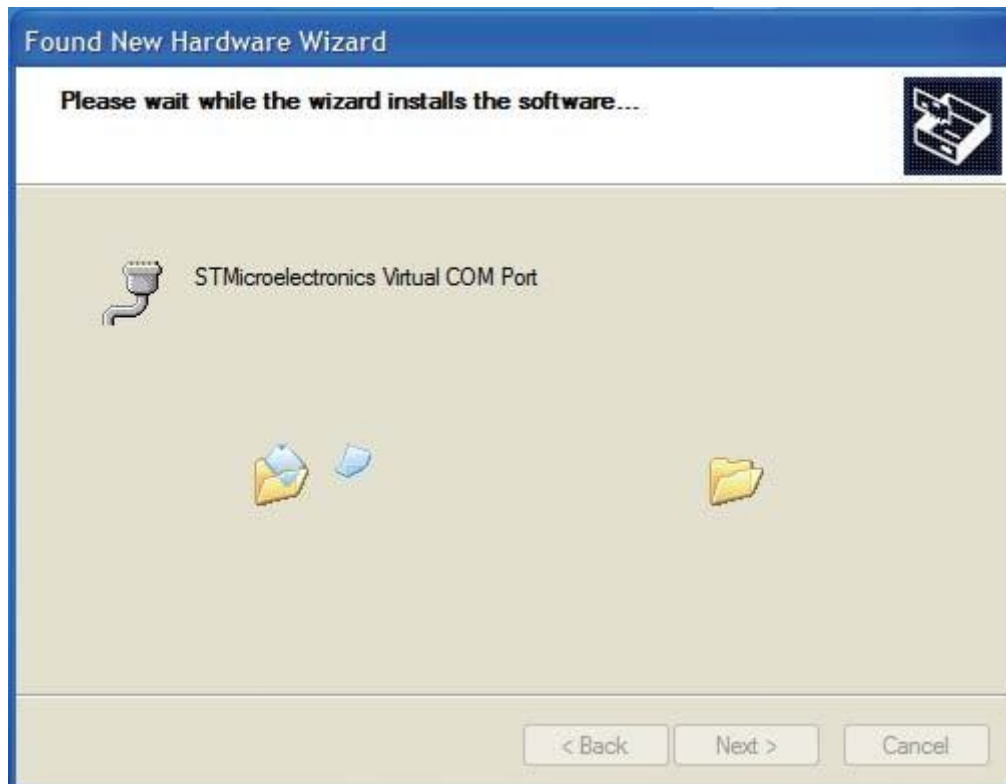


1. Automatic Installation

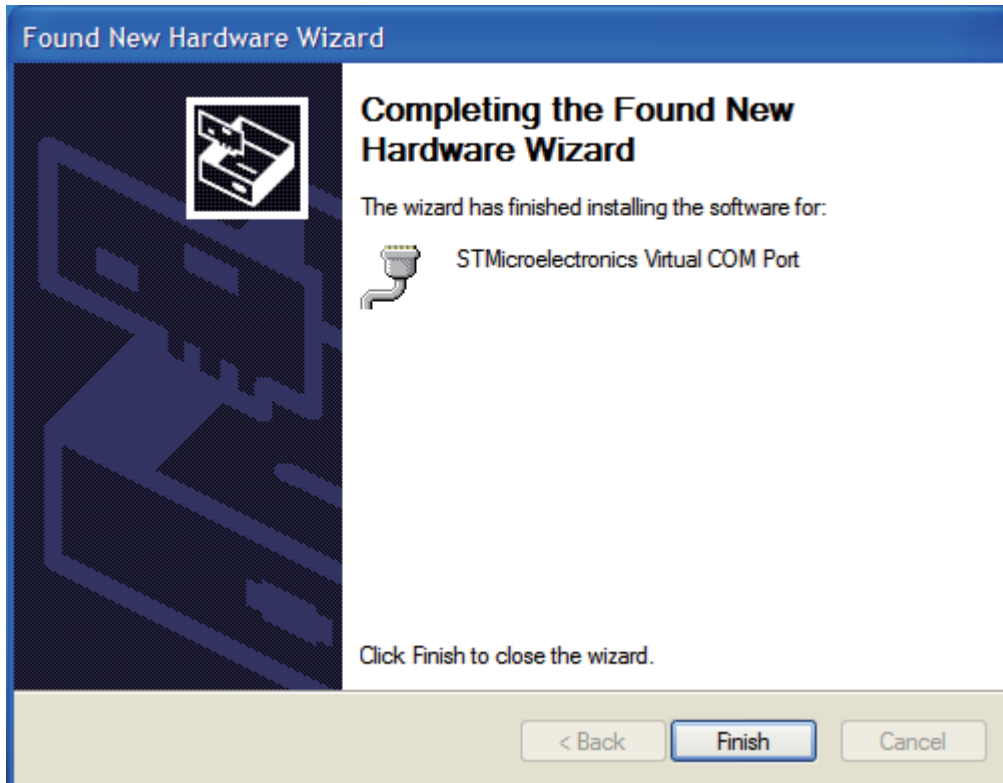
If the wizard prompts to help you install the software for "STMicroelectronics Virtual COM Port". Select **Install the software automatically (Recommended)**. Press the **Next** button to proceed.



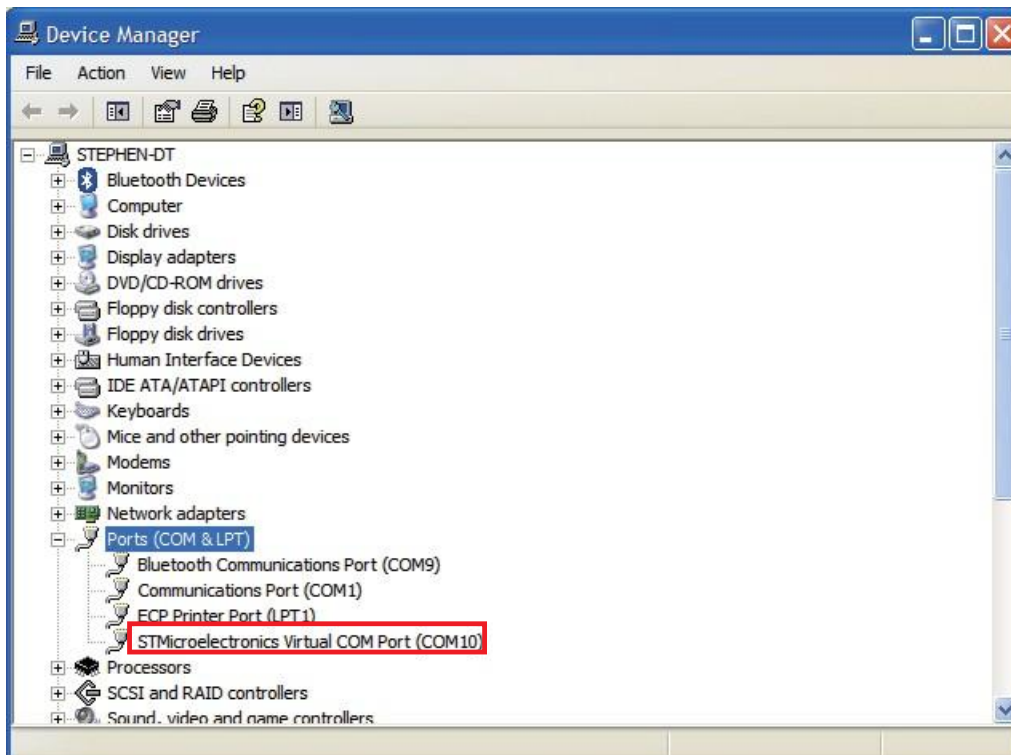
The wizard proceeds to install the driver.



The installation completes.

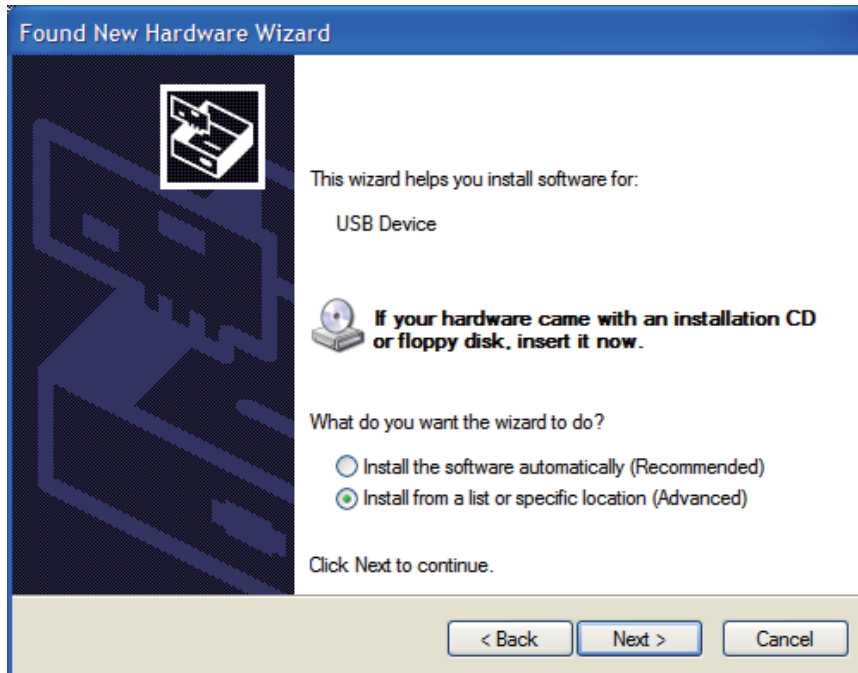


In [Device Manager], the CAREU U1 Lite(WR) device is included under **Ports (COM & LPT)** as "STMicroelectronics Virtual COM Port". COM port number is displayed as well.

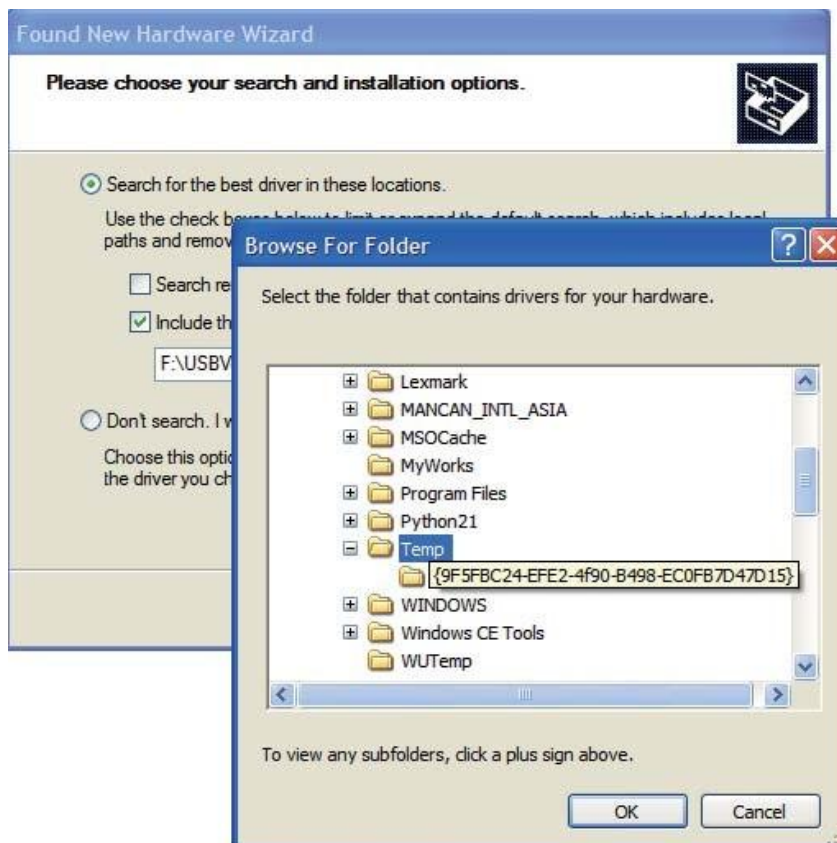


2. Manual Installation

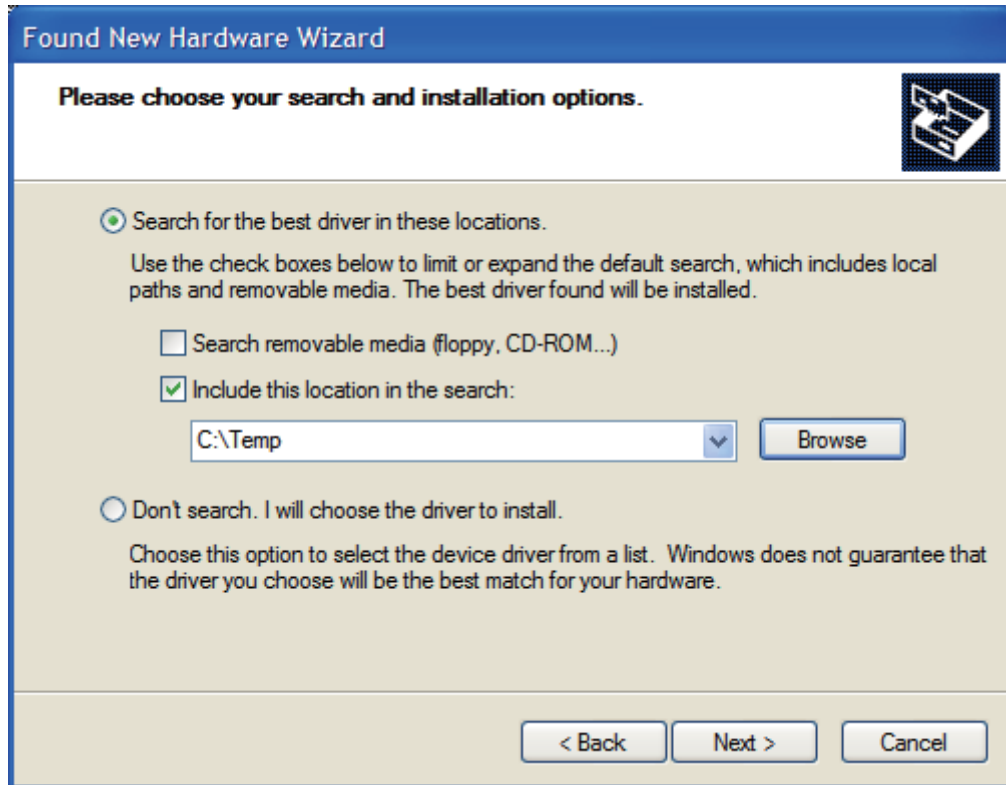
After you select **No, not this time**, if the wizard only prompts to help you install software for "USB device", you need to manually install the driver. Select **Install from a list or specific location (Advanced)**. Press the **Next** button to proceed.



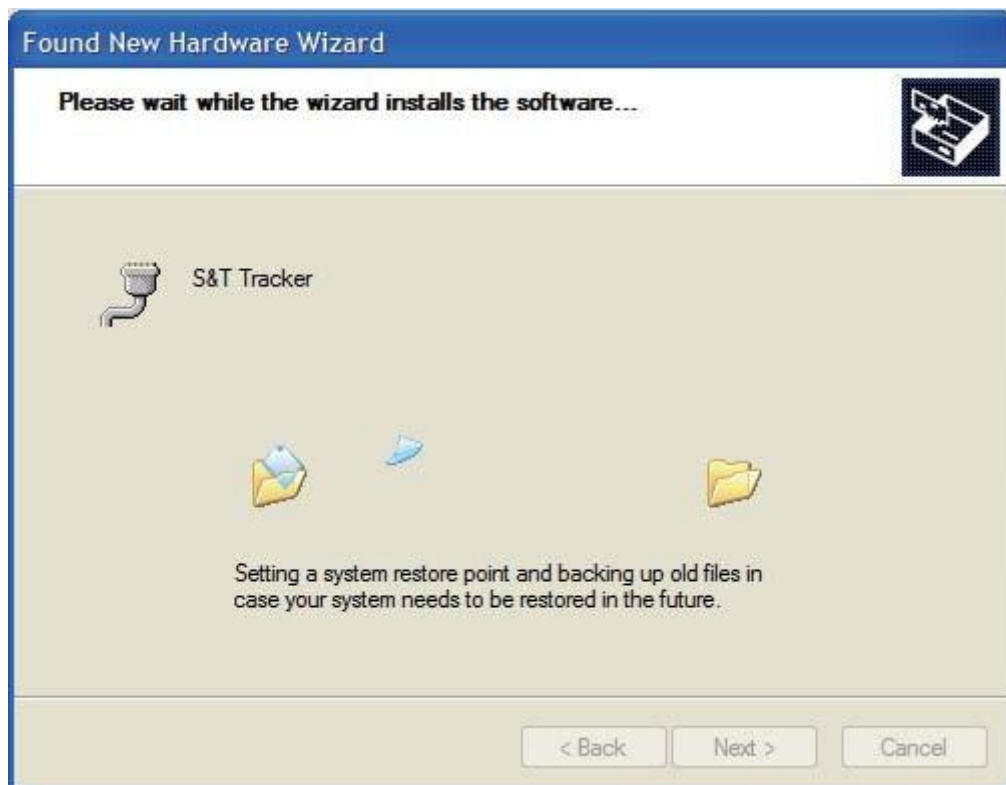
Select **Search for the best driver in these locations**. Check **Include this location in the search**. Press the **Browse** button to assign where your the CAREU U1 Lite(WR) de- vice driver locates on your local disk. Press the **OK** button. You can download the USB device driver from <http://www.systech.com.tw/downloads.php>.



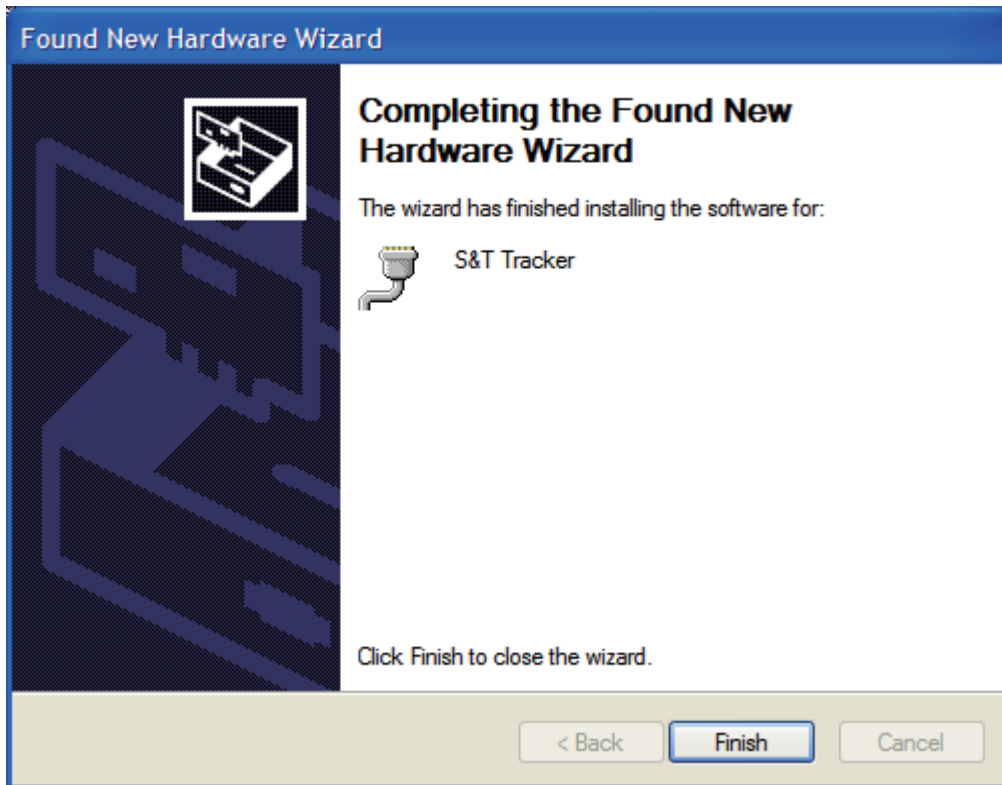
Press the Next button to proceed.



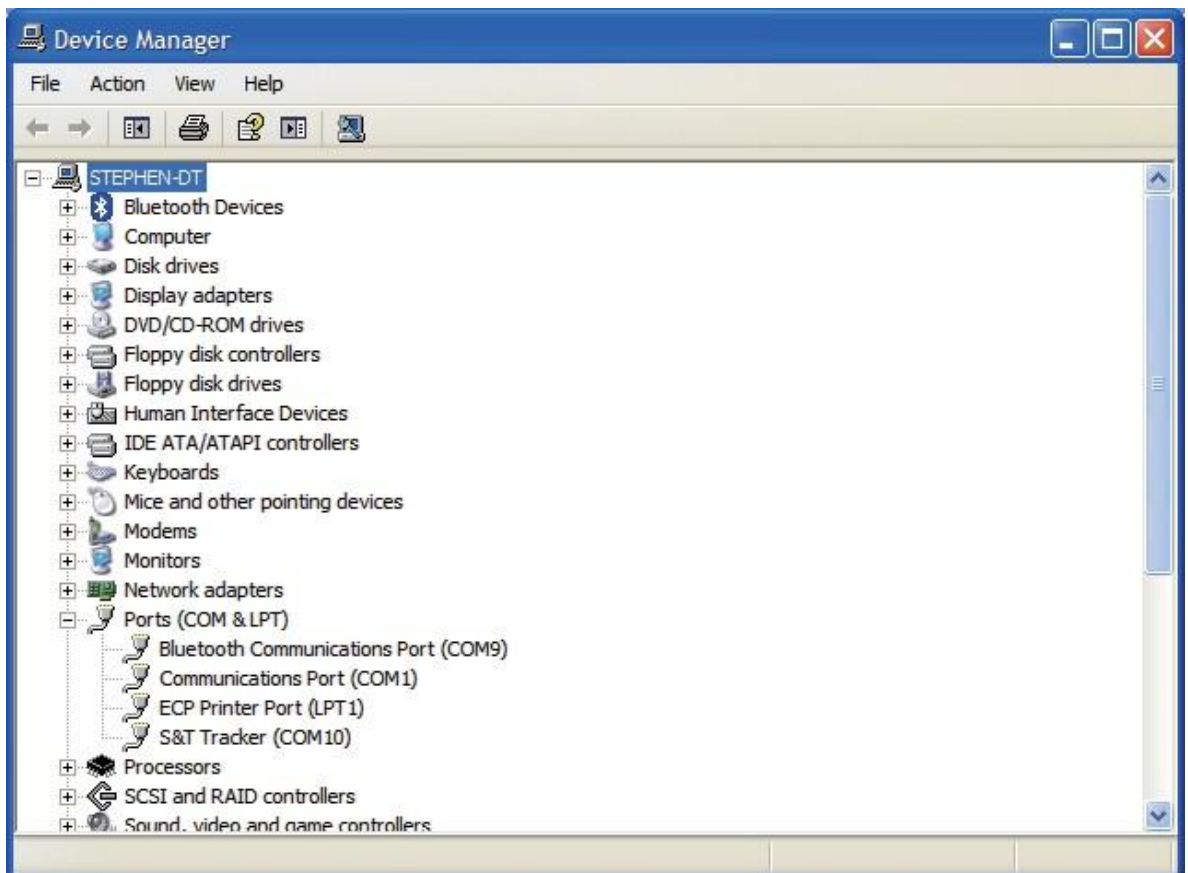
The wizard proceeds to install the driver.



The installation completes.



In [Device Manager], the CAREU U1 Lite(WR) device is included under **Ports (COM & LPT)** as "S&T Tracker". COM port number is displayed as well.



3.5 Device Configuration

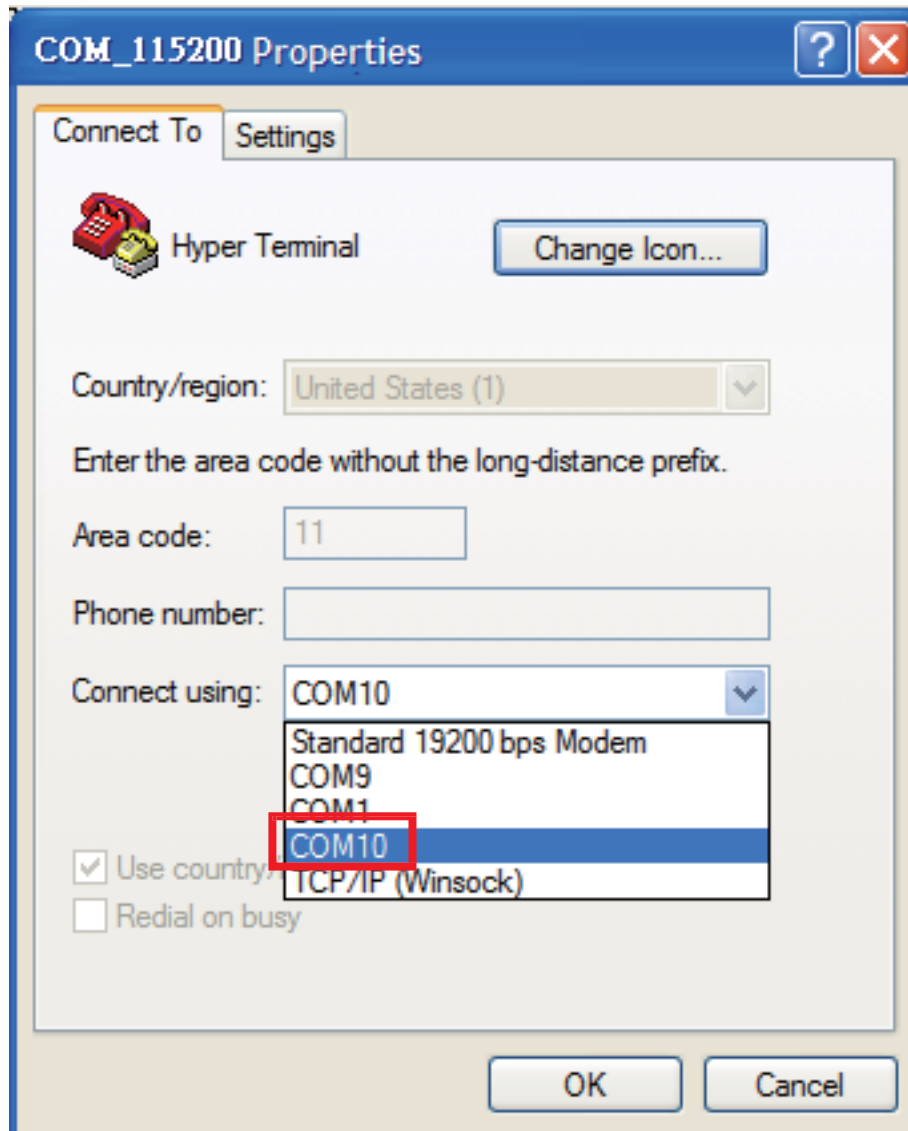
1. In Windows XP desktop, click **Start | All Programs | Accessories | Communications | HyperTerminal**.
2. If you are prompted to input the information of your location, complete them to proceed.
3. On the **File** menu of **HyperTerminal**, click **New Connection**.
4. In the **Name** box, type a name that describes the connection. In the Icon box, click an appropriate icon. Press the **OK** button to proceed.



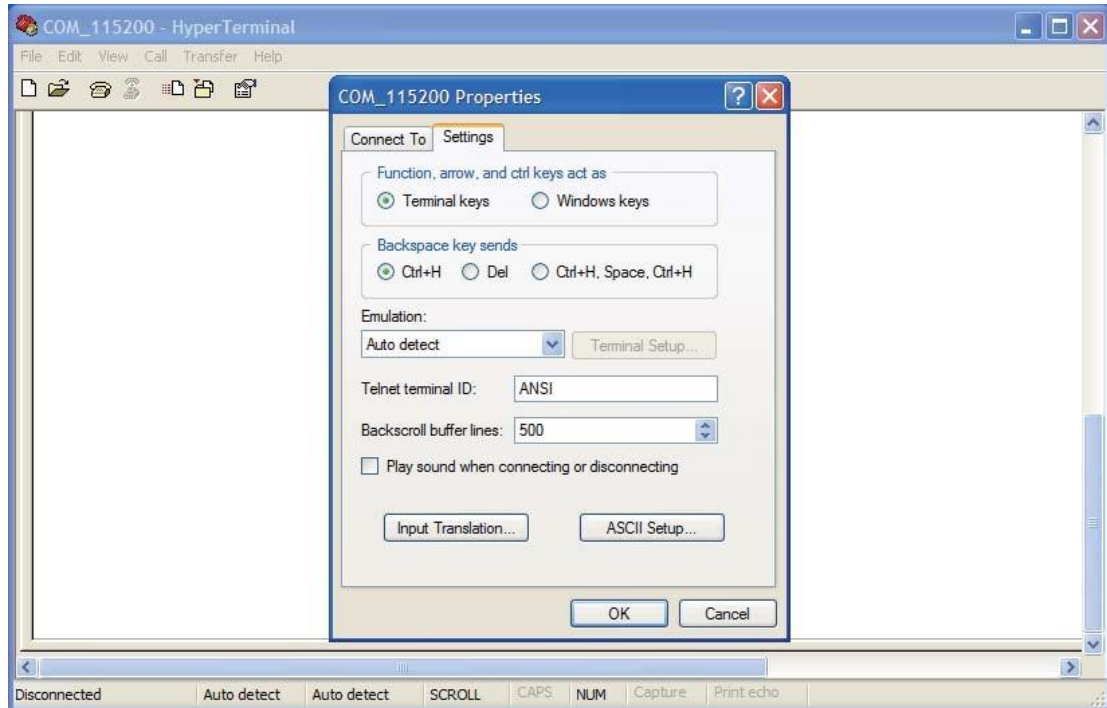
5. For Com port properties, configure as follows:

Baud Rate --> 115200 bps
Data Bits --> 8
Parity --> None
Stop Bits --> 1
Flow Control --> None

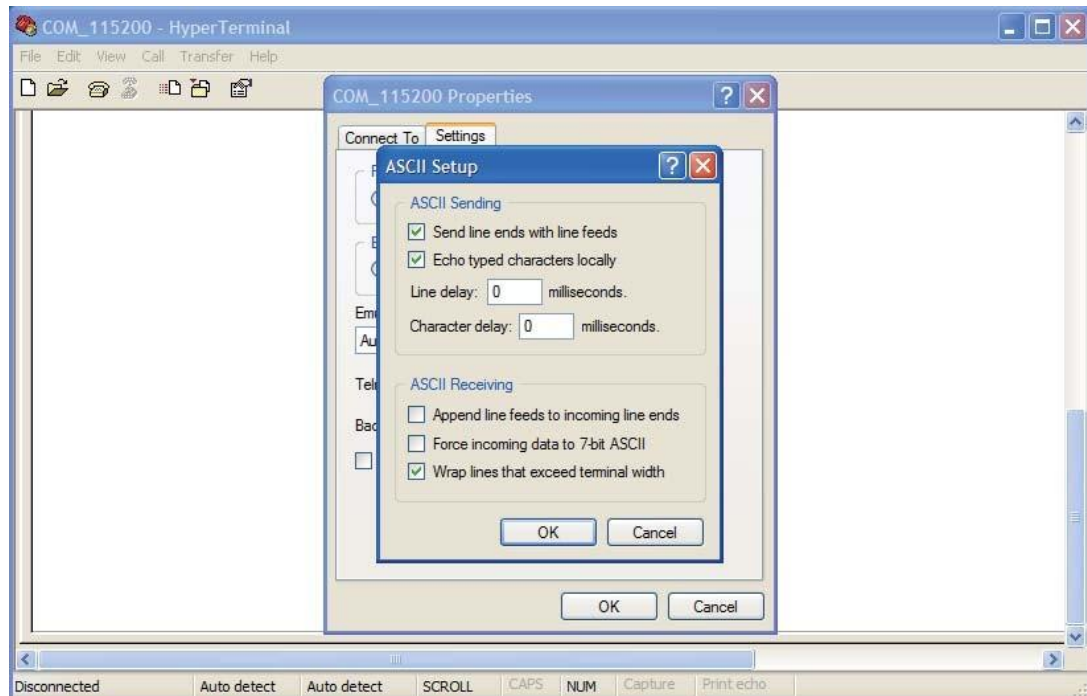
6. In the connection that you have just set up, click **File | Properties**. Select the **[Connect To]** tab. From the **[Connect using]** drop down list, select the correct com port by checking it up at Windows XP's **[DeviceManager]** as previously mentioned on page **10** and page **13**. Go there by clicking **Start | Control Panel | System | Hardware | Device Manager**.



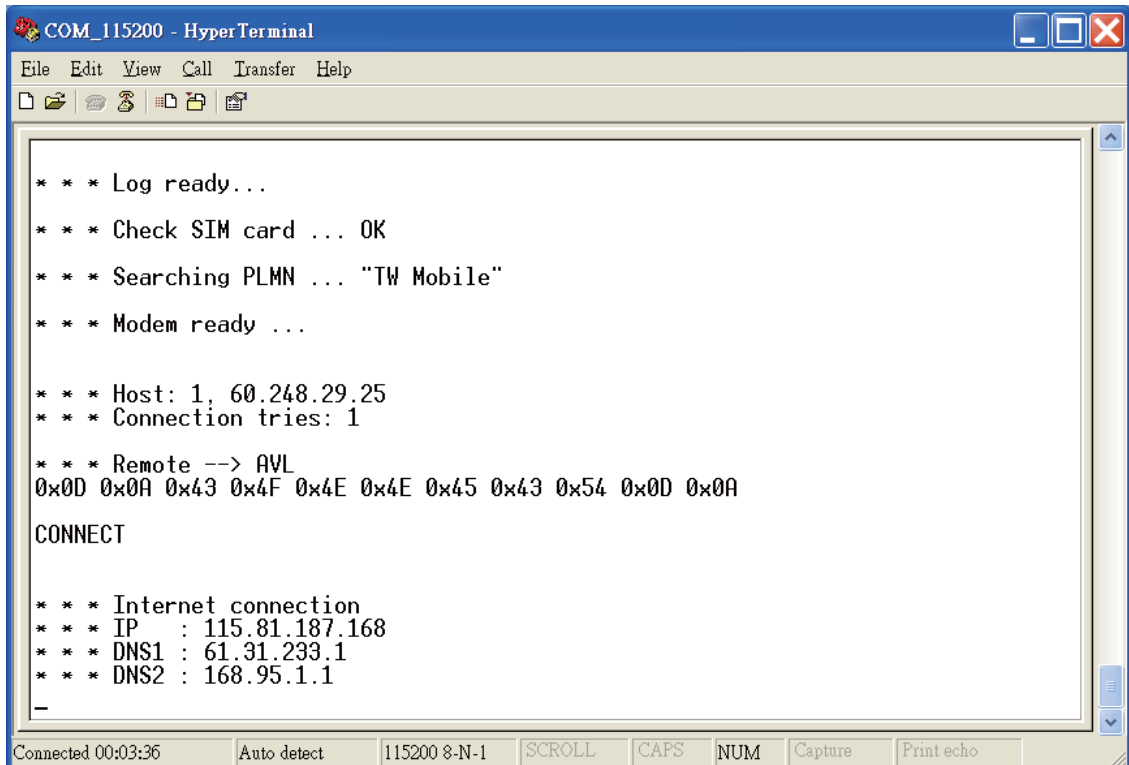
- In the **File** menu, click **Properties**. Click the **[Settings]** tab. Press the **ASCII Setup** button.



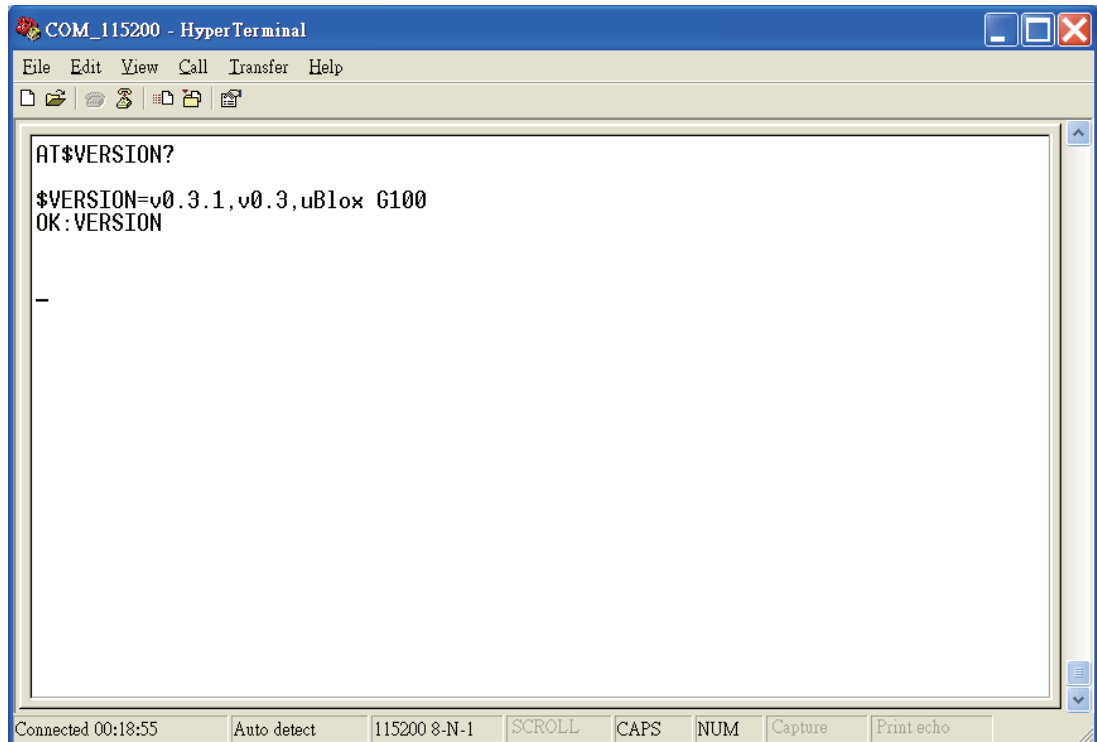
- In the **[ASCII Sending]** group box. Select both **Send line ends with line feeds** and **Echo typed characters locally**. Press the **OK** button.



9. Connect your the CAREU U1 Lite(WR) device to power as mentioned in **Power and I/O Cable Connection** on page 5. The device startup message will be displayed.



10. In **HyperTerminal** window, type in the command "AT\$VERSION?" and press the **Enter** key. The hardware and firmware version will show. As long as your **HyperTerminal** window appears as the screenshot below, a connection between the device and your system has already been built up and working. It is time to send all configuration commands.



3.6 Communication Settings

The CAREU U1 Lite(WR) vehicle tracker communicates with your control center by either SMS or GPRS (TCP/UDP). Before the device is installed into a vehicle, communication parameters should be set.

1. SMS Configuration

Use AT\$SMSDST command to set a SMS control center phone number or short code. For example, if the SMS control center phone number is +886123456789, the AT\$SMSDST command to be issued into **HyperTerminal** should be:

```
AT$SMSDST=+886123456789
OK
```

Then you can try to use cellular phone or SMS gateway to send a SMS message to the CAREU U1 Lite(WR) device. Send a SMS message --> "AT\$MODID?"

Device will response:

```
$MODID=101000001
OK
```

This proves a successful mobile phone SMS connection.

2. GPRS Configuration

Set GPRS servers by using the following commands:

```
AT$APN=internet,username,password (APN=internet, Username=username,
Password=password) OK
AT$HOSTS=1,0,60.148.19.10,6000
```

(Server IP address = 60.148.19.10 and Port number =6000)

```
OK
AT$RETRY=5,10 (Message retry settings)
OK
AT$IPTYPE=1 (Using TCP/IP mode)
OK
AT$GPRSEN=1 (GPRS enable)
OK
AT$HB=60,1 (Heartbeat setting)
OK
```

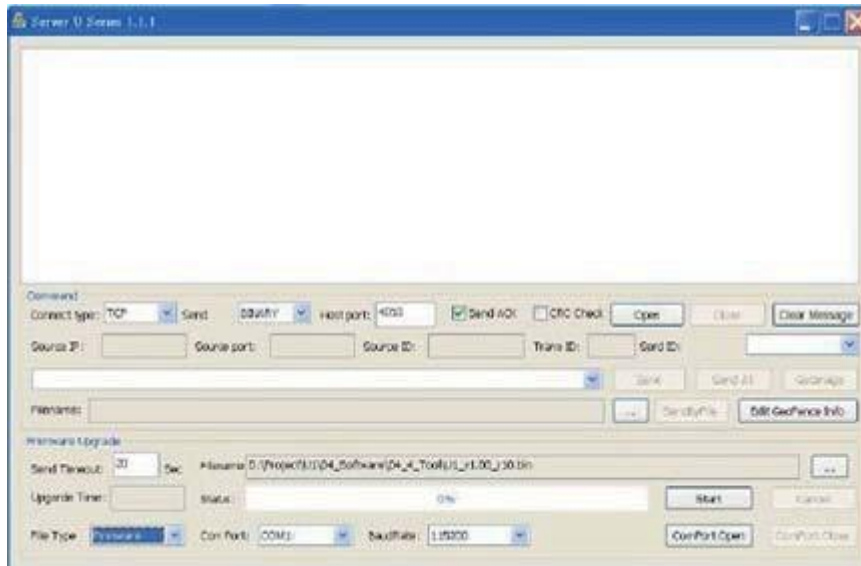
Please refer to the CAREU U1 Lite(WR) Protocol Document for more command details.

3.7 GPS Tracking Configurations

After the device communication settings are done, the remote GPS tracking is ready to function. The setting of GPS tracking can be done by using AT\$PDSR command. For example,

AT\$PDSR=1,30,0,0,2,0,0,1,1 (Tracking through GPRS by time interval 30 seconds)
OK

For simple testing GPRS, run the TCP Server U-Series software which is provided by S&T. It is simple server software that can wait for device connection and data.



For advanced testing, you need the software Intelli TracerPlus. Please request this software through your sales contact.



You can also apply for a testing account from S&T's Intelli FleetWeb solution through your sales contact.

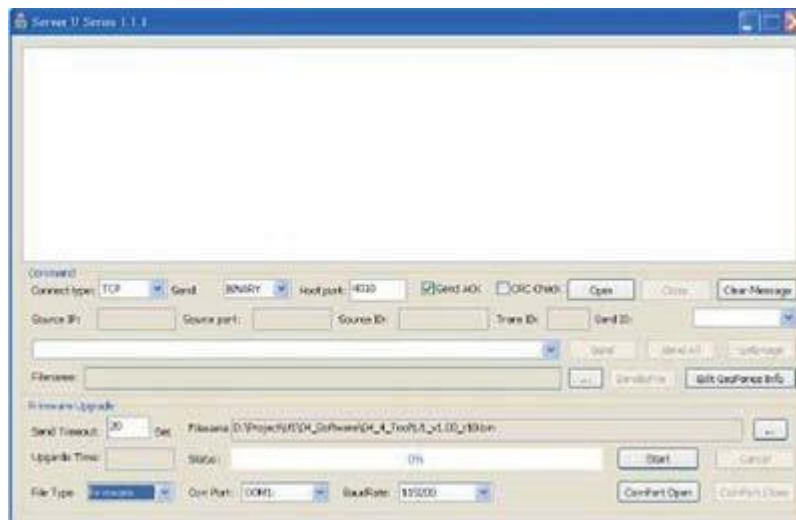
The main page of the Intelli FleetWeb appears as below:




3.8 Firmware Upgrade

The firmware of the CAREU U1 Lite(WR) can only be updated through USB interface. With the firmware loader tool provided by S&T, firmware update can be done for the device. Such firmware loader runs on Windows-based systems. To upgrade the firmware, follow the procedure below:

1. Connect the device to your PC with the USB cable.
2. Connect the device to power.
3. Power on the device.
4. Run ServerUSeries.exe. A window displays as follows:



5. Press browse the button  to browse to the firmware provided by S&T.
6. Press the **Start** button to run the firmware program.
7. After the writing progresses to 100%, it takes about 20 seconds for the update to completes.
8. Firmware update completes.

Chapter 4 Technical Specification

Characteristics	
Dimensions (L x W x H)	72mm x 90mm x 33mm
Weight	170g
Radio Performance	
Frequency	Quad-band 850/900/1800/1900MHz
GSM Functionality / GPRS	
GPRS Mode	Multi-slot Class 10
GPRS Coding Scheme	CS1,CS2,CS3 and CS4
GSM Antenna	External
SIM Interface	SIM Card 1.8V, 2.9V Supported
GPS Functionality	
Receiver	50 Channels
Sensitivity (Tracking)	-160dBm
Antenna Type	External GPS Active Antenna, 3.3V
Connector	SMA Female
GPS Protocol	NMEA 0183 Ver3.0
Onboard Components	
MCU	32-bit Microcontroller
Data Memory	8MB Flash
Motion Sensor	3-axes Acceleration Sensor
Led Indicator	GPS and GSM Indicator

Interface I/O	
I/O Connector	1 Connector, 8 Pins
Serial Connector	Standard Version: 1 RS-232 Ports (Configurable) Simple Version: No RS-232 Port
Input Ports	Positive Triggers: 2 Negative Trigger: 1 Analog Input: 1 (0~30V, 12 Bits)
Output Ports	Negative Triggers: 2 (300mA)
Electrical	
Power Source	DC 8V to 30V
Power Consumption	72mA @ 12V (Operating Mode) 8mA @ 12V (Standby Mode) 6mA @ 12V (Deep Sleep Mode)
Environment	
Operating Temperature	-20 °C to +70 °C (Without Backup Battery) -20 °C to +60 °C (With Backup Battery)
Battery	
Rechargeable Backup Battery	900mAh

Note: The specification herein is subject to change without prior notice.

Chapter 5 Regulation

FCC Regulations:

15.19(a)(3):

This device complies with part 15 of the FCC Rules. Operation is subject to the following two conditions: (1) This device may not cause harmful interference, and (2) this device must accept any interference received, including interference that may cause undesired operation.

15.105(b):

NOTE: This equipment has been tested and found to comply with the limits for a Class B digital device, pursuant to part 15 of the FCC Rules. These limits are designed to provide reasonable protection against harmful interference in a residential installation.

This equipment generates, uses and can radiate radio frequency energy and, if not installed and used in accordance with the instructions, may cause harmful interference to radio communications. However, there is no guarantee that interference will not occur in a particular installation. If this equipment does cause harmful interference to radio or television reception, which can be determined by turning the equipment off and on, the user is encouraged to try to correct the interference by one or more of the following measures:

- Reorient or relocate the receiving antenna.
- Increase the separation between the equipment and receiver.
- Connect the equipment into an outlet on a circuit different from that to which the receiver is connected.
- Consult the dealer or an experienced radio/ TV technician for help.

Changes or modifications not expressly approved by the party responsible for compliance could void the user's authority to operate the equipment.

This device complies with FCC radiation exposure limits set forth for an uncontrolled environment. In order to avoid the possibility of exceeding the FCC radio frequency exposure limits, human proximity to the antenna shall not be less than 20cm (8inches) during normal operation.

The antenna(s) used for this transmitter must not be co-located or operating in conjunction with any other antenna or transmitter.

RF Exposure Information

This device meets the government's requirements for exposure to radio waves.

This device is designed and manufactured not to exceed the emission limits for exposure to radio frequency (RF) energy set by the Federal Communications Commission of the U.S. Government.

Systems & Technology Corp. (S&T), founded in 1987, is a market leader in Automatic Vehicle Locating (AVL) solutions, Geographical Information Systems (GIS) and navigation. It has formed a professional development team to innovate the most advanced and comprehensive GPS tracking products for the customers and has built a global service network to provide non-stop services and support.

With the well-established marketing networks of over 100 distributors in the world, S&T is your trustworthy tracking solution provider. For more product information, please contact S&T by Email, phone or fax.

This marking or statement shall include the following or similar text:

**CAUTION
RISK OF EXPLOSION IF BATTERY IS REPLACED
BY AN INCORRECT TYPE.
DISPOSE OF USED BATTERIES ACCORDING
TO THE INSTRUCTIONS**



Web Site	http://www.systech.com.tw
Email	avl@systech.com.tw
Phone	+886 2 26981599
Fax	+886 2 26981211