

SYSTRAN Enterprise Server 6

Application Packs User Guide

Table of Contents

Chapter 1: Overview.....	1
SYSTRAN Enterprise Server 6 Overview.....	2
SYSTRAN Enterprise Server 6 Product Comparison	3
SYSTRAN Enterprise Server 6 Configuration Requirements	4
Operating System	4
Processor (Windows and Linux).....	4
Processor (SUN)	4
Memory	4
Hard Disk	4
Server	4
Client.....	4
Using the Application Packs User Guide	4
User Tools.....	5
Expert Tools.....	5
About Language Translation Software.....	5
SYSTRAN Support.....	5
Symbols	5
Tips	5
Notes.....	5
Cautions.....	6
Typographic Conventions	6
Menu, Command, and Button Names.....	6
Filenames and Items You Type.....	6
Manual and Chapter Titles	6
Button and Dialog Box Names	6
Keyboard Shortcuts.....	6
About SYSTRAN.....	6
Copyright.....	6
Trademarks	7
Chapter 2: A Tour of SYSTRAN Enterprise Server 6 – Application Packs.....	8
Translating Web Pages in Internet Explorer and Firefox	9
Translating Text in Microsoft Office	9
Translating Text using the SYSTRAN Translation Toolbar.....	9
Translating Selected Text in any Windows Application.....	10
Translating PDF and other Files Using Quick File Translator	10
Creating and Managing Dictionaries with SYSTRAN Dictionary Manager	10
User Dictionaries.....	10
Normalization Dictionaries	10
Translation Memories.....	11
Managing Translation Projects Using SYSTRAN Translation Project Manager	11
Chapter 3: Understanding User Tools and Expert Tools	12
SYSTRAN User Tools Overview	13
SYSTRAN Expert Tools Overview.....	13
SDM Expert Tools Specific Features	14

Creating Remote Dictionaries	14
Using the Transaction Column	15
Downloading a Remote Dictionary Subset	16
Remote Dictionary Conflicts	18
Resolving Dictionary Conflicts	18
Dictionary Synchronization	19
Setting Dictionary Synchronization	19
Viewing Changes	22
Breaking Synchronization	23
STPM Expert Tools Specific Features	25
User Dictionary/Domain Highlighting	25
Translation Snapshots	27
Taking Translation Snapshots	27
Deleting Translation Snapshots	28
Comparing Snapshots	29
Chapter 4: Understanding Global Options	32
Remote and Local Profile	33
Selecting Remote Profiles	33
Creating Remote Profiles	35
Deleting Remote Profiles	36
Managing Profile Permissions	38
Toggling between Local and Remote Mode	40
Chapter 5: Configuration	43
Product deployment	44
Silent Installation	44
Software Manager Deactivation	44
Setting Up, Updating, and Removing Translation Services	44
Setting Up a Translation Service	44
Updating a Translation Service	48
Removing a Translation Service	49
Appendices	51
Appendix A: Language Pairs	52
Appendix B: License Agreement	53

Chapter 1: Overview

SYSTRAN Enterprise Server 6 Overview

SYSTRAN Enterprise Server 6 Product Comparison

SYSTRAN Enterprise Server 6 Configuration Requirements

- Operating System

- Process (Windows and Linux)

- Processor (SUN)

- Memory

- Hard Disk

- Server

- Client

Using the Application Packs User Guide

About Language Translation Software

SYSTRAN Support

Symbols

- Tips

- Notes

- Cautions

Typographic Conventions

- Menu, Commands, and Button Names

- Filenames and Items You Type

- Manual and Chapter Titles

- Button and Dialog Box Names

- Keyboard Shortcuts

About SYSTRAN

Copyright

Trademarks

SYSTRAN Enterprise Server 6 Overview

Available in three editions, SYSTRAN Enterprise Server 6 is the only comprehensive solution able to meet the full range of translation needs on an enterprise scale. Supporting unlimited user access and millions of translations per day, the solution is easy to deploy on a corporate intranet and extranet, on one or multiple servers. It translates all types of documents and files formats, and also seamlessly integrates with any business application.

Efficient access to the solution's rich features is made available through a Web-based interface and a software toolsuite called Application Packs available on the user desktop. Popular features let users instantly translate texts, emails, Web pages, RSS feeds, and a wide variety of file formats while preserving the original document layout in the translations. Common to both interfaces is a dictionary search tool that provides users with instant access to alternative meanings of selected terms from several built-in dictionaries as well as user-defined dictionaries.

Users can improve and control quality translations with 5 built-in dictionaries covering 20 domains, user-defined profiles made of up unique options that are applied to specific translation tasks, and two outstanding tools. The three-level SYSTRAN Dictionary Manager lets users customize translations by adding their terminology into the translation process. With this tool users create, manage, and store of their linguistic resources on a centralized server which ensures consistent use of terminology across the enterprise. The SYSTRAN Translation Project Manager is a translation workbench used to create, manage, and post-edit translation projects. It interacts with the Dictionary Manager and offers powerful review tools for terminology, analysis, and QA.

Corporations can easily add translation functionalities to any enterprise application through the open APIs in SYSTRAN Enterprise Server 6. The Administration tools allow for easy maintenance, activity reporting, and managing user permissions.

Feature usability is linked to each edition of SYSTRAN Enterprise Server 6. Workgroup Edition is for small sized businesses, Standard Edition is for midsized, and Global for the large enterprise platform.

SYSTRAN Enterprise Server 6 Product Comparison

Online Tools	Workgroup	Standard	Global
User Limit	100	Unlimited	Unlimited
Dictionary Search	Yes	Yes	Yes
Text Translation	Yes	Yes	Yes
Web Translation	Yes	Yes	Yes
File Translation (includes RTF, DOC, DOCX, XLSX, PPTX, PDF, and HTML)	Yes	Yes	Yes
RSS Translation	Yes	Yes	Yes
Email Translation	No	Yes	Yes
Client License – Application packs	Workgroup	Standard	Global
Use Limit	100	2,500	Unlimited
Work Offline	Optional	Optional	Included
Administration	Workgroup	Standard	Global
User self registration	Yes	Yes	Yes
LDAP support	No	No	Yes
Administration Module	Yes	Yes	Yes
Statistics	Yes	Yes	Yes
API	Workgroup	Standard	Global
Translation: HTML, AJAX, SOAP	Yes	Yes	Yes
Dictionary Search: SOAP	No	No	Yes
Dictionary coding: SOAP	No	No	Yes
Server Configuration	Workgroup	Standard	Global
Total production servers	1	2	Unlimited
Multi-Server installation	No	No	Yes
Advanced pool management	No	No	Yes
Cache management	No	No	Yes
Operating System	Workgroup	Standard	Global
Linux	No	No	Yes
Windows	Yes	Yes	Yes
Solaris	No	No	Yes
Linguistic Features	Workgroup	Standard	Global
User Dictionaries (server-side)	Yes	Yes	Yes
Translation Memories (server-side)	No	Yes	Yes
SYSTRAN Translation Stylesheet	No	No	Yes
Server Limitations – User Dictionaries and Translation Memories	Workgroup	Standard	Global
Number of dictionary administrators	1	5	Unlimited
Number of User Dictionaries per administrator	1	5	Unlimited
Entries per User Dictionary	20,000	20,000	20,000
Translation Memory per language pair	None	1	Unlimited
Entries per Translation Memory	None	40,000	40,000

SYSTRAN Enterprise Server 6 Configuration Requirements

Operating System

- Windows 2003 SP2 – all server editions
- Linux RedHat Enterprise 4 and 5
- Linux Fedora Core 3 or higher
- SUN Solaris 10

Processor (Windows and Linux)

- Minimum: Intel Pentium or compatible (2 GHz or higher)
- Recommended: Dual Intel Xeon or compatible (3 GHz or higher)

Processor (SUN)

- Minimum: UltraSPARC Iii (550 MHz or higher)
- Recommended: Dual UltraSPARC IIIi (1.34 GHz or higher)

Memory

- Minimum: 1 GB RAM
- Recommended: 2 GB RAM

Hard Disk

- Minimum: 1.5 GB free disc space + 130 MB per bidirectional language pair
- Recommended: 3.0 GB free disc space + 130 MB per bidirectional language pair

Server

- JBoss, WebSphere, or WebLogic
- The default Application Server delivered is JBoss 4.0.5
- Java SDK 1.5 is required

Client

- Windows 2000 SP4, Windows XP SP2, Windows Vista
- Web Browsers: Internet Explorer 6 or 7, Firefox
- Microsoft Office 2000, XP, 2003, or 2007 (for Application Packs)

Using the Application Packs User Guide

The Application Packs are composed of two client application toolsuites available on top of SYSTRAN Enterprise Server 6: SYSTRAN User Tools and SYSTRAN Expert Tools.

User Tools

- SYSTRAN Translation Toolbar
- Microsoft Office translation plugins
- Internet Explorer and Firefox translation plugins
- Quick File Translator
- Dictionary Search

Expert Tools

- SYSTRAN Dictionary Manager (SDM)
- SYSTRAN Translation Project Manager (STPM)

About Language Translation Software

Language Translation Software, also known as Machine Translation, provides a set of tools by which electronic text is automatically translated from one language (like English) into another (like Spanish).

The software quickly yields a gisting-level translation (the ability to understand the general idea of what is written) and even better translation quality when users take the time to train the software to learn their company or subject terminology.

SYSTRAN offers robust tools to help you improve the quality of your translations and streamline your post-editing and quality assurance workflows.



While SYSTRAN strives to provide the highest possible automatic translation quality, it is important to note that the quality of the source text has a significant effect on translation results. No automatic translation is perfect, nor is it intended to replace human translators.

SYSTRAN Support

For more information, contact SYSTRAN support at:

<http://www.systransoft.com/contact/Enterprise.html>

Symbols

The following symbols are used in this Guide.

Tips


A tip provides helpful information. The  icon identifies a tip.

Notes

A note is information that requires special attention. The  icon identifies a note.

Cautions

A caution contains information that, if not followed, can cause damage to the application or critical files in the application or to the user's computer.

The  icon identifies a caution.

Typographic Conventions

The following typeface conventions are used in this Guide.

Menu, Command, and Button Names

The names of menus, commands, and Toolbar buttons are shown in a **Bold** typeface.

Filenames and Items You Type

Filenames and items that you type are shown in a `Courier` typeface.

Manual and Chapter Titles

Manual and chapter titles are shown in *Italic Title Caps*.

Button and Dialog Box Names

Button and Dialog Box Names are shown in *Title Caps*.

Keyboard Shortcuts

Keyboard Shortcuts are shown in **FULL CAPS**.

About SYSTRAN

SYSTRAN offers the most widely used Language Translation Software in the world covering desktop products, scalable client-server applications (customer-hosted) and online services (SYSTRAN hosted). Our core language translation technologies power innovative products and solutions for PCs, networks and the Internet that facilitate communication in 52 language combinations and in 20 specialized domains.

SYSTRAN's enterprise solutions enable the creation of multilingual content for businesses to manage large amounts of information in a consistent manner. They are applied across diverse best-practice solutions for intra-company communications, content management, online customer support, eCommerce, email systems, chat, and more. The choice of leading search engines, global corporations and governments, SYSTRAN solutions increase user productivity levels and time-savings.

Copyright

SYSTRAN version 6. Copyright © 2008 SYSTRAN. All Rights Reserved.

Information in this document is subject to change without notice. The software described in this document is furnished under a license agreement or a nondisclosure agreement. The software may be used or copied only in accordance with the terms of those agreements. No part of this publication may be reproduced, stored in a retrieval system, or transmitted by any means, electronic or mechanical, including photocopying

and recording, for any purchaser's personal use without the written permission of SYSTRAN.

SYSTRAN Software, Inc.
9333 Genesee Avenue
Suite PL1
San Diego, CA 92121
USA

SYSTRAN SA
La Grande Arche
1, Parvis de la Défense
92044 Paris La Défense Cedex
FRANCE

Trademarks

SYSTRAN Enterprise Server is a trademark or registered trademarks of SYSTRAN.

JBoss is a registered trademark of JBoss Inc.

Java is a registered trademark of Sun Microsystems.

WebLogic is a registered trademark of BEA Systems.

WebSphere is a registered trademark of IBM Corporation.

InstallShield is a registered trademark of Macrovision Corporation.

Larousse Dictionaries, © Larousse, 2008.

Microsoft Excel, Internet Explorer, Outlook, PowerPoint, Windows, and Word are trademarks or registered trademarks of Microsoft Corporation in the United States and/or other countries.

Mozilla and Firefox are registered trademarks of the Mozilla Foundation.

All other trademarks are the property of their respective owners.

Chapter 2: A Tour of SYSTRAN Enterprise Server 6 – Application Packs

Translating Web Pages in Internet Explorer and Firefox

Translating Text in Microsoft Office

Translating Text using the SYSTRAN Translation Toolbar

Translating Selected Text in any Windows Application

Translating PDF and other Files Using Quick File Translator

Creating and Managing Dictionaries with SYSTRAN Dictionary Manager

- User Dictionaries

- Normalization Dictionaries

- Translation Memories

Managing Translation Projects using SYSTRAN Translation Project Manager

A Tour of SYSTRAN Enterprise 6 – Application Packs

SYSTRAN Enterprise Server 6 – Application Packs enables users to perform translations and to manage dictionaries on a remote server. Users can also include access to SYSTRAN and Larousse dictionaries and allow the use of general or specialized terminologies (such as Computer Science, Automotive...).



It is possible to combine a SYSTRAN 6 Desktop Product and a SYSTRAN Enterprise Server 6 – Application Packs installation. In such a case, users can switch from a local mode and remote mode for translation and dictionary management.

Translating Web Pages in Internet Explorer and Firefox

Web pages in Internet Explorer or Firefox can be translated through the SYSTRAN User Tools application.

SYSTRAN 6 displays in the Web browser as a toolbar, and lets users translate Web pages as they browse. Once a page has been translated, the fluid navigation feature automatically translates all pages linked to that page. When users click one of these links, the linked page displays automatically in the selected target language. This allows users to seamlessly browse the Web in their native language.

For more information, refer to **Translating Web Pages in Internet Explorer and Firefox** in the *SYSTRAN 6 Desktop User Guide*.

Translating Text in Microsoft Office

SYSTRAN 6 allows users to translate text in Microsoft Office applications (Word, PowerPoint, Excel, and Outlook) while preserving the document formatting. This feature is included in SYSTRAN User Tools application.

The SYSTRAN Toolbar allows users to perform translations directly from each any Microsoft Office application. For more information, refer to **Application Settings** in the *SYSTRAN 6 Desktop User Guide*.

Translating Text using the SYSTRAN Translation Toolbar

SYSTRAN 6 users can translate any text from any Windows application with a simple cut/copy and paste through the SYSTRAN Translation Toolbar. This feature is included in the SYSTRAN User Tools applications.

Once text has been copied to the Translation Toolbar (or typed into it), users click the **Translate** button to translate the text and display the translation. Using **Translate as you type**, the text is translated as users type.

For more information, refer to **Translating in Other Windows Applications** in the *SYSTRAN 6 Desktop User Guide*.

Translating Selected Text in any Windows Application

SYSTRAN 6 Application Packs allow users to translate selected text in any Windows application by pressing **Ctrl+T** once the SYSTRAN Translation Toolbar has been activated.

Translating PDF and other Files Using Quick File Translator

The SYSTRAN 6 Quick File Translator provides rapid translation of PDF, TXT, Word, RTF, Excel, PowerPoint, and HTML files. Quick File Translator is available in the SYSTRAN User Tools application.

For more information, refer to **Using Quick File Translator** in the *SYSTRAN 6 Desktop User Guide*.

Creating and Managing Dictionaries with SYSTRAN Dictionary Manager

SYSTRAN Dictionary Manager (SDM) allows users to create their own user-defined dictionaries. These dictionaries can be used to improve translation quality by training the software to understand special terminology or subject matter.

SYSTRAN Dictionary Manager is unique and highly intuitive as it contains three levels of linguistic data types that you can add to the translation process: **User Dictionaries**, **Normalization Dictionaries**, and **Translation Memories**. Any data provided by users automatically complements the software's default translations and trains the software to translate specific terminology based on the subject and context users work with. The more terms added to SDM, the higher the coverage of the specific terminology in the translated texts – and higher coverage yields better quality translation results.

A version of SDM is available in all SYSTRAN 6 products except SYSTRAN Web Translator. Available features depend on the SYSTRAN 6 product you install. See **SYSTRAN Dictionary Manager Features** in the *SYSTRAN 6 Desktop User Guide* for information on the dictionary features included in each SYSTRAN 6 product.

User Dictionaries

User Dictionaries (UDs) are bilingual or multilingual glossaries that are created by SYSTRAN 6 users, and which can be used in addition to the SYSTRAN built-in dictionaries to enhance translation quality. Individual UD entries can be related to specific subjects. Advanced users benefit from additional features that allow them to add domain, syntactic, or semantic information to UD entries, helping the software translate those terms in proper context.

Normalization Dictionaries

Normalization Dictionaries (NDs) are monolingual resources used to normalize, standardize or correct source text before translation or to correct target text after translation. Use of NDs ensures that different terms or spellings of the same term are translated consistently, such as “online” instead of “on-line”. NDs also allow users to

translate irregular terms, such as in chat ("4u" meaning "for you") or to expand acronyms before translation ("USA" for "United States of America").

Translation Memories

Translation Memories are collections of sentence pairs, each of which includes a source sentence and its translation, stored in a bilingual or multilingual database. Companies, freelancers or agencies that maintain Translation Memories can leverage these exact translations by automatically adding them to SDM. Translation Memories are also built incrementally in STPM when reviewing translations.

Managing Translation Projects Using SYSTRAN Translation Project Manager

SYSTRAN Translation Project Manager allows users to improve the quality of their translation of DOC, RTF, TXT, HTML, and PDF files by adding entries to the User Dictionary, processing dictionary updates, and using advanced revision tools for quality assurance. These tools include *not found word and extracted terminology review*, analysis of the source (original) file, full sentence review, use of alternative meanings, and other features to speed up the post-editing process.

Users can import a single file or URL (SYSTRAN Business Translator), or multiple files or URLs (SYSTRAN Premium Translator) with an integrated crawling feature and translate them as a background process. Users can then use STPM's Sentence Alignment feature to view and compare the original (source) and translated (target) files or Web pages side by side.

After revision in STPM, users can generate target documents preserving the format of the source documents.



SYSTRAN 5 users: SYSTRAN MultiTranslate Utility (SMTU) has been integrated into STPM in SYSTRAN 6.

Chapter 3: Understanding User Tools and Expert Tools

SYSTRAN User Tools Overview

SYSTRAN Expert Tools Overview

SDM Expert Tools Specific Features

- Creating Remote Dictionaries

- Using the Translation Column

- Downloading a Remote Dictionary Subset

- Remote Dictionary Conflicts

 - Resolving Remote Dictionary Conflicts

- Dictionary Synchronization

 - Setting Dictionary Synchronization

 - Viewing Changes

 - Breaking Synchronization

STPM Expert Tools Specific Features

- User Dictionary/Domain Highlighting

- Translation Snapshots

 - Taking Translation Snapshots

 - Deleting Translation Snapshots

 - Comparing Snapshots

Understanding User Tools and Expert Tools

SYSTRAN User Tools Overview

It's easy to start translating with SYSTRAN Enterprise Server 6 User Tools. Most of your translation work will include one or more of the following activities:

- Translating with the SYSTRAN Translation Toolbar
- Looking up a term using the SYSTRAN Translation Toolbar
- Translating selected text in any Windows application
- Translating an entire file through Microsoft Office plug ins and the Quick File Translator
- Translating a Web page through Internet Explorer and Firefox translation plugins

The User Tools application provides a single toolbar for several translation capabilities, including:

- Using the SYSTRAN Toolbar (refer to the *SYSTRAN 6 Desktop User Guide*)
- Translating in Microsoft Office
- Translating in other Windows Applications
- Translating Web Pages
- Translating files Using Quick File Translator

The User Tools also allows users to search for term translations in User Dictionaries, SYSTRAN main or specialized dictionaries and in Larousse dictionaries. For more information, refer to Using the Lookup Feature in the *SYSTRAN 6 Desktop User Guide*.

SYSTRAN Expert Tools Overview

Together with the Global Options feature, SYSTRAN Export Tools includes the following tools:

- SYSTRAN Dictionary Manager (SDM)
- SYSTRAN Translation Project Manager (STPM)

SDM and STPM features are detailed in Using SYSTRAN Dictionary Manager (SDM) and Using SYSTRAN Translation Project Manager (STPM).

SYSTRAN Expert Tools also provides additional functionalities, such as the Snapshot capability, and custom highlighting.

Key differences between the SYSTRAN 6 Desktop Products and the two SYSTRAN Enterprise Server 6 toolsets Expert Tools include:

- Translations are performed on a remote server (referred to hereafter as Translation Service)
- Users can share translation profiles

- Users can manage dictionaries stored on the SYSTRAN server

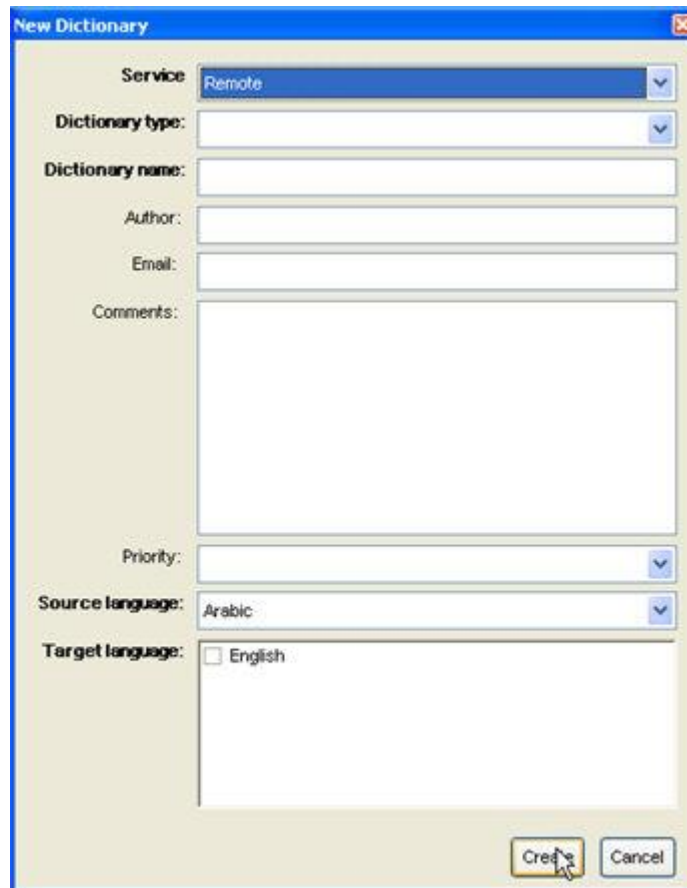
Please note that it is also possible to combine a SYSTRAN 6 Desktop Product and a SYSTRAN Enterprise Server 6 client installation. In such a case, users will be able to switch from a local mode and remote mode for translation and dictionary management.

SDM Expert Tools Specific Features

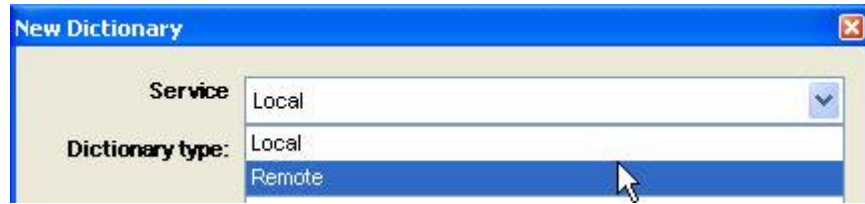
Creating Remote Dictionaries


Remote dictionaries can be created using SYSTRAN Dictionary Manager (SDM), provided that at least one remote Translation Service is configured to your SYSTRAN installation (refer to Setting Up a Translation Service on page 44). Please note that to create remote dictionaries a user must be granted the right to do so by a SYSTRAN server administrator.

1. Create a dictionary in SDM using the **File|New** command. The **New Dictionary** dialog will display.

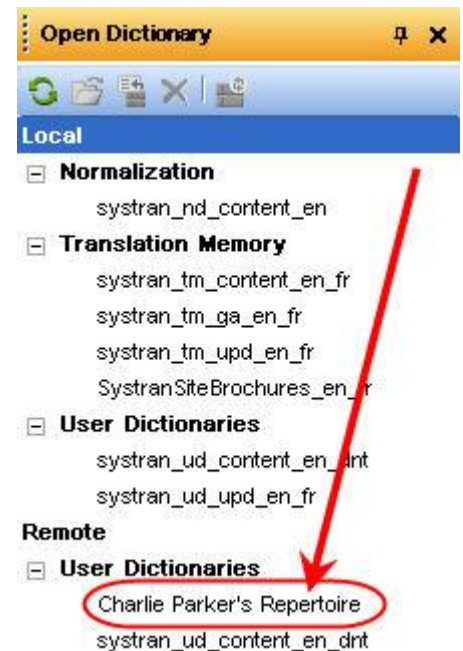


2. Use the **Service** dropdown to set the new dictionary as **Remote**.



 The **Local** option is available only to users who are running a SYSTRAN desktop product as well as a client-server product (refer to **Toggling between Local and Remote Mode** on page 40).

3. Enter the pertinent information for the new dictionary into the provided fields in the **New Dictionary** dialog and click **Create**.
4. The new dictionary will display in the main screen area, and you can now add entries to it (refer to **Adding Dictionary Entries** in the *SYSTRAN 6 Desktop User Guide*).
5. Save the new dictionary to the server using the **File|Save** command.
6. Click the **Refresh dictionary list** button in the **Open Dictionary** pane to display the new dictionary.



Using the Transaction Column

By default, the **Transaction** column displays at the far left of remote dictionaries downloaded to SDM.

		English (Source language)	French (Target language)	Category
	?	numbers	chansons	Noun
	✓	stage	etage	Noun
	?	smokin'	playing well	Verb
	?	cool cat	person	Noun
	?	ride	car	Noun
*				

The **Transaction** column indicates the edit status for all entries in a remote dictionary.

Symbol	Description
	No change has been made to the remote dictionary entry.
	The entry has undergone an edit action since the remote dictionary was downloaded to SDM.
	A new entry, added since the remote dictionary was downloaded to SDM.
	The remote dictionary entry has been deleted. The entry will persist in SDM, though, until the dictionary is saved to the server.

Downloading a Remote Dictionary Subset

As an aid to working with particularly large remote dictionaries, SYSTRAN Dictionary Manager (SDM) provides a means for retrieving remote dictionary subsets.

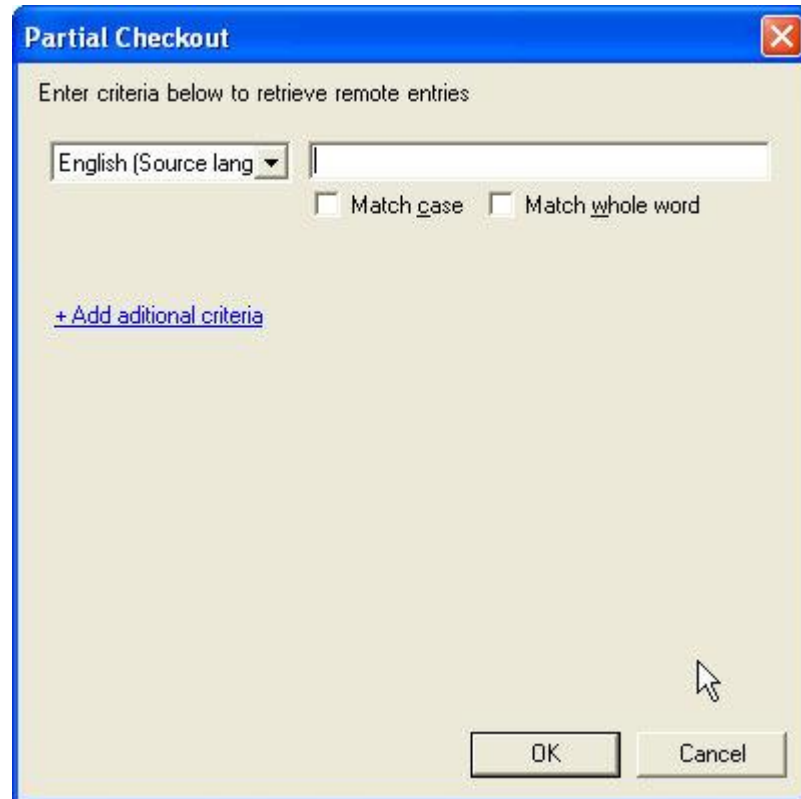
1. In the **Open Dictionary** pane, click one time on the remote dictionary from which the subset will be configured.



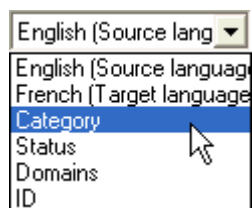
2. Click the **Download subset from selected dictionary** button.



The **Partial Checkout** dialog will display.

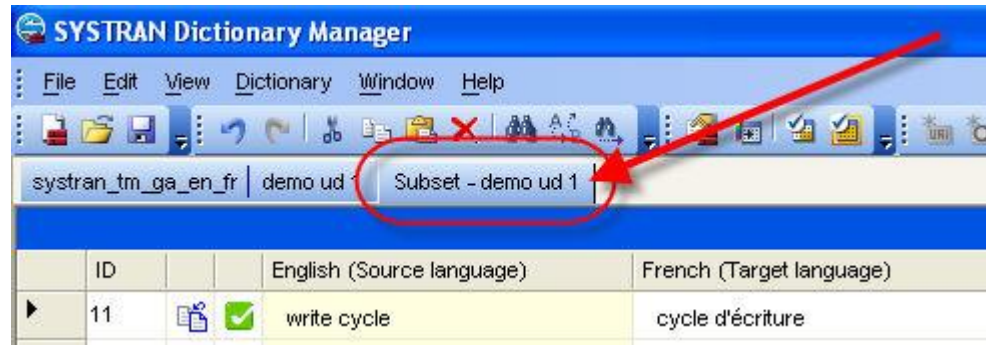


3. Configure criteria for the dictionary subset.
 - a. Set general criteria elements using the provided dropdown.



- b. Based on the general criteria element selected, use the tools provided to narrow the results.
 - c. Click **+Add additional criteria** to add more criteria to the dictionary subset.

4. Click **OK**. The dictionary subset will display in a new SDM tab.



Remote Dictionary Conflicts

With SYSTRAN Enterprise Server 6 two or more parties can edit the same remote dictionary at the same time, presenting the possibility for conflict when it comes time to save the work.

When a user attempts to save a remote dictionary back to the server, SYSTRAN Dictionary Manager (SDM) checks for changes made to the dictionary by other parties since the initial checkout. If changes are detected, SDM returns an alert to that effect.



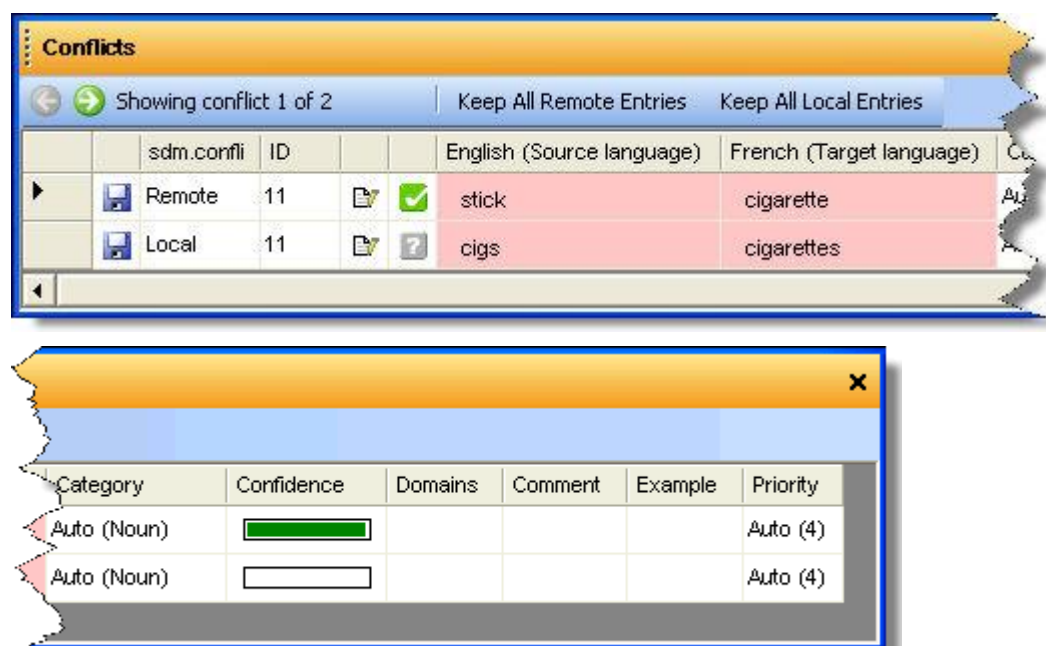
Clicking **OK** results in the display of the **Conflicts** pane, which provides tools designed to manage such incongruities (refer to Resolving Dictionary Conflicts, following).

Resolving Dictionary Conflicts



When a user attempts to save a remote dictionary back to the server, SYSTRAN Dictionary Manager (SDM) determines whether changes have been made to the dictionary by other parties since the initial checkout. If changes are detected, SDM returns an alert to that effect.





Clicking **OK** results in the display of the **Conflicts** pane.

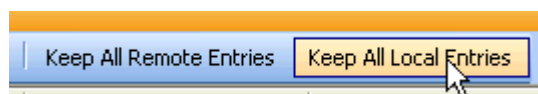


Users can manage dictionary conflicts with the tools offered by the **Conflicts** pane; viewing the incongruities in opposition to each other, and taking action to resolve the incongruities.

- Review the conflicts one-by-one, clicking the arrow navigation buttons   to move through.
- Indicate the overriding terms individually, using the arrow correction icons present in each term column. Clicking the icon in a term transposes its definition to its counterpart.

English (Source language)	French (Ta	English (Source language)	French (Ta
ride	 voiture	ride	 voiture
wheels	car	ride	car

- Click either the **Keep all Remote Entries** or the **Keep all Local Entries** button to affect an all-encompassing conflict resolution.



Dictionary Synchronization

Setting Dictionary Synchronization

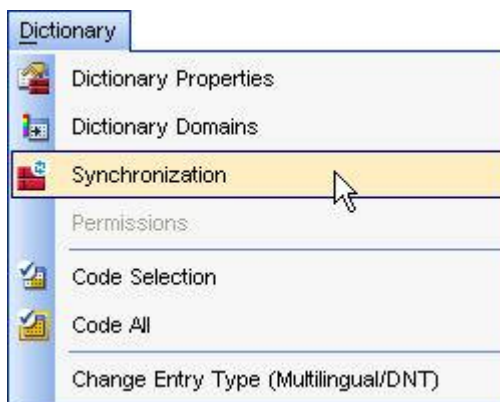
Users who have a desktop version of SDM installed can manipulate both local and remote dictionaries. Also, local iterations of remote dictionaries can be synchronized with their remote counterparts, a primary benefit of which is that it allows users to work on dictionaries off-line and subsequently reconcile them as necessary.

1. Highlight a dictionary in the Open Dictionary panel in SDM and click the Set synchronization properties button.

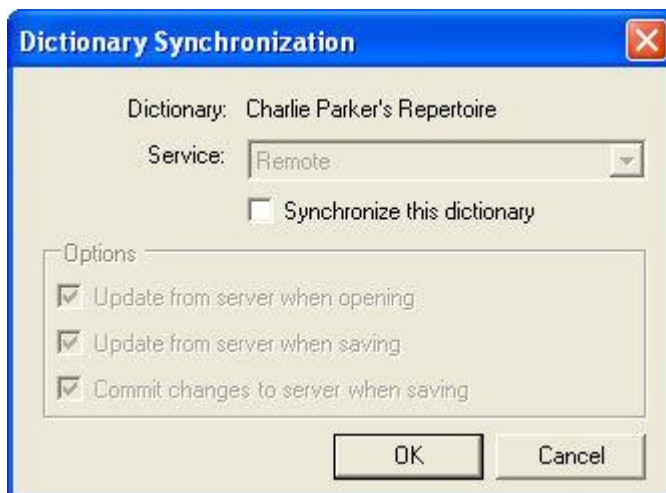


– or –

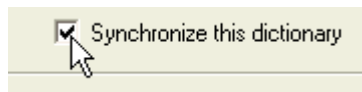
Double-click on any local or remote dictionary to open it in the main SDM pane and issue the **Dictionary|Synchronization** command.



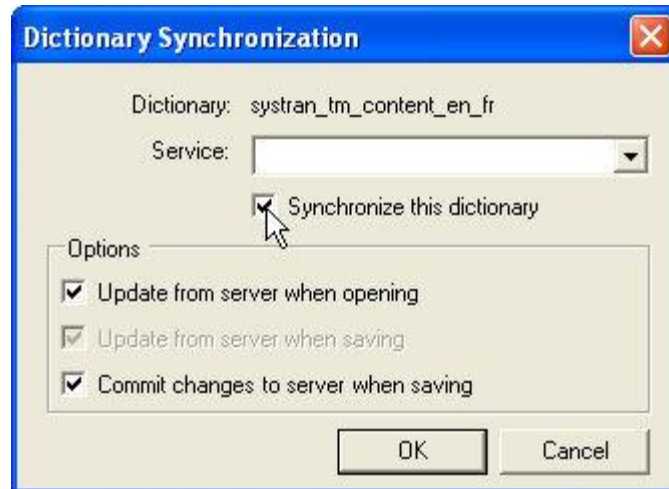
The **Dictionary Synchronization** dialog will display.



2. Tick the Synchronize this dictionary checkbox.

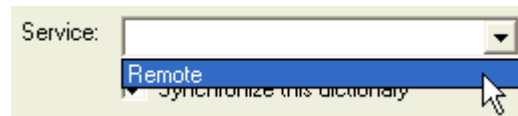


This action enables the various synchronization **Options**, and the **Service** dropdown when the selected dictionary is local.



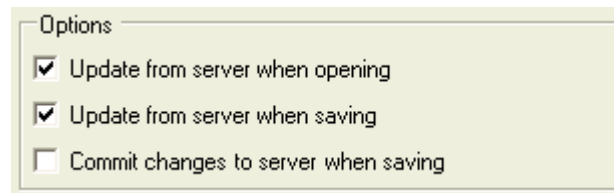
Please note that when a remote dictionary is selected the service name associated with it automatically displays in the **Service** dropdown and cannot be changed. When a local dictionary is selected, however, the **Service** dropdown is blank and must be set.

3. If the selected dictionary is local, indicate the Translation Service to which it is to be synchronized using the **Service** dropdown.



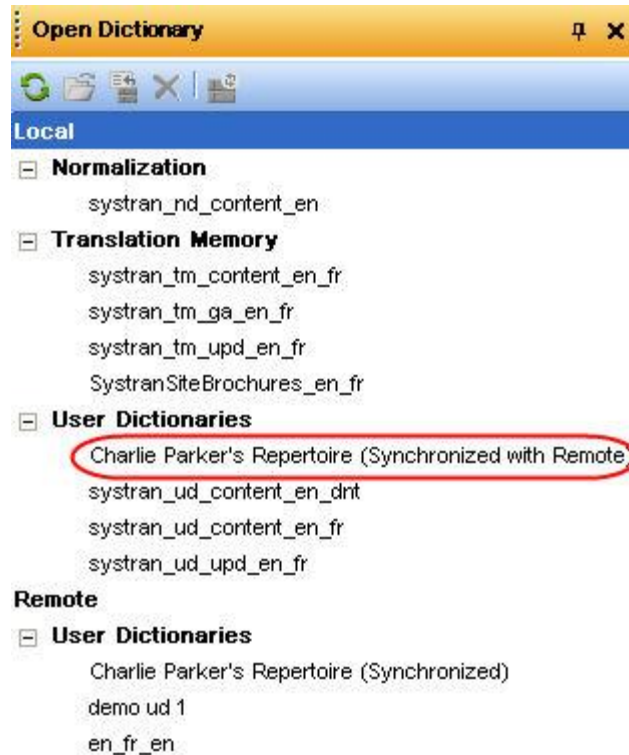
If the selected dictionary is remote, the service association is pre-set and cannot be changed.

4. Further configure the synchronization by ticking the appropriate choices from those offered in the **Options** box.



5. Click **OK**.

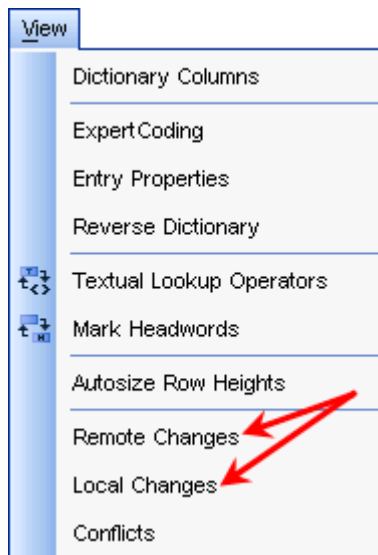
If the synchronization was set up for a remote dictionary an iteration of that dictionary now resides on the user's hard drive. Indication of this local iteration is made in the **Open Dictionary** panel under **Local|User Dictionaries**.



If the synchronization was set up for a local dictionary an iteration of that dictionary now resides on the remote server with a corresponding indication in the **Open Dictionary** panel under **Remote|User Dictionaries**.

Viewing Changes

SYSTRAN Dictionary Manager (SDM) provides tools for reviewing the changes made to synchronized dictionaries.



Command	Description
View Remote Changes	Reveals changes made to the remote iteration of a synchronized dictionary.

Command	Description
---------	-------------

View|Local Changes Reveals changes made to the local iteration of a synchronized dictionary.

Once selected, each of these commands presents a pane that details the specific changes made.






Local Changes					
		English (Source language)	French (Target language)	Category	Confidence
▶	 	sticks	cigarettes	Auto (Noun)	<input type="text"/>

Remote Changes					
		English (Source language)	French (Target language)	Category	Confidence
▶	 	stick	cigarette	Auto (Noun)	<div><div></div></div>

Breaking Synchronization

It may be necessary at times to break a set dictionary synchronization. Though simple to perform, users should be aware that breaking a dictionary synchronization will result in the loss of the local iteration of that dictionary.

1. Highlight either the Local or Remote iteration of the dictionary whose synchronization is to be broken in the **Open Dictionary** panel in SDM and click the **Set synchronization properties** button.

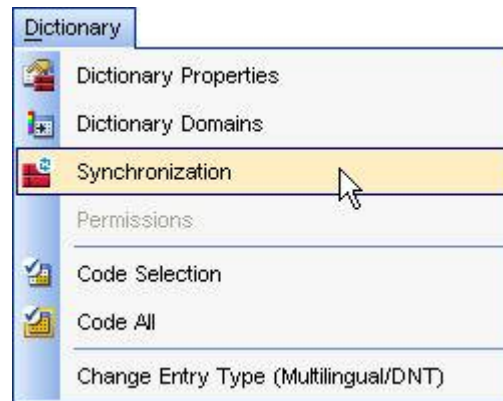
Open Dictionary	
    	
Local	
<input type="checkbox"/> Normalization	systran_nd_content_en
<input type="checkbox"/> Translation Memory	systran_tm_content_en_fr systran_tm_ga_en_fr systran_tm_upd_en_fr SystranSiteBrochures_en_fr
<input type="checkbox"/> User Dictionaries	Charlie Parker's Repertoire (Synchronized with Remote) systran_ud_content_en_dnt systran_ud_upd_en_fr



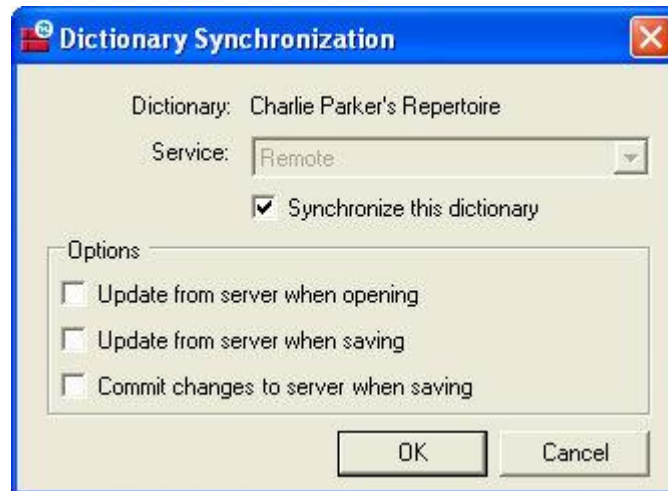
Remote	
<input type="checkbox"/> User Dictionaries	Charlie Parker's Repertoire (Synchronized) systran_ud_content_en_dnt

– or –

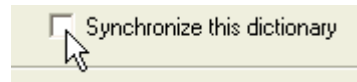
Double-click either the Local or Remote iteration of the dictionary to open it in the main SDM pane and issue the **Dictionary|Synchronization** command.



The **Dictionary Synchronization** dialog will display.

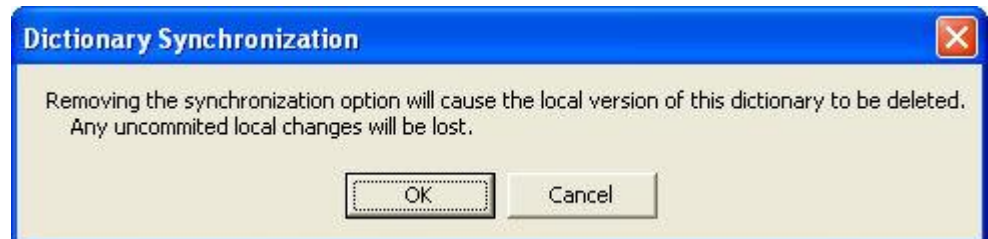


2. Untick the **Synchronize this dictionary** checkbox.



3. Click **OK**.

An alert is offered, warning that breaking the synchronization will result in the deletion of the local version of the dictionary.



4. Click **OK** to break the synchronization..

STPM Expert Tools Specific Features

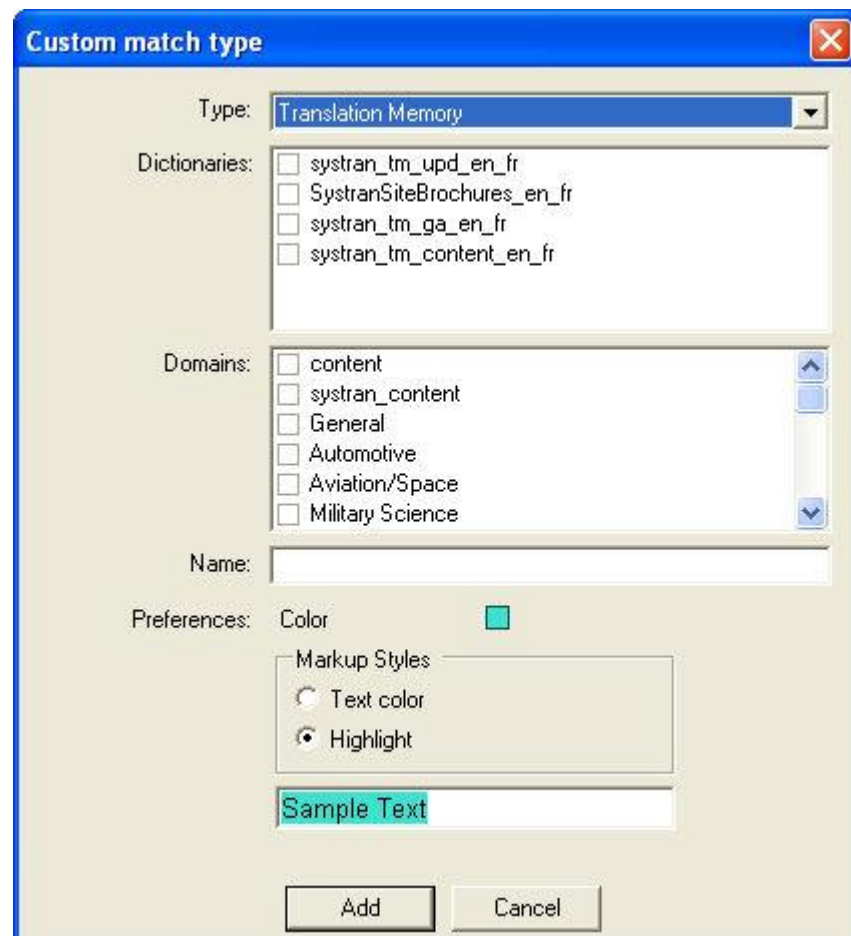
User Dictionary/Domain Highlighting

With STPM users can configure their **Markup Styles** (refer to **Configuring Document Markup Options** in the *SYSTRAN 6 Desktop User Guide*) to highlight terms drawn from specific User Dictionaries and Domains, as they reside in their project's corpus files.

1. Access the **Markup Styles** pane, either by selecting the **View|Markup Styles** command or by clicking the **Markup Styles** button on the View Toolbar.
2. In the **Dictionary Matches** section, click **+ Add Custom Match Type**.



The **Custom match type** dialog will display.



3. Using the tools provided, set the desired display characteristics for the custom match type.
 - Use the **Type** dropdown to indicate the dictionary type.
 - Using the **Dictionaries** and **Domains** boxes, tick the dictionaries and domains to emphasize.
 - Enter a name for the new match type in the **Name** field.
 - Click the colored box to the right of **Preferences: Color** to open the color palette and select the color for the custom match type.



- Select a markup style using the radio buttons in the **Markup Style** box.
4. Click **Add**. The new custom match type will display in the **Dictionary matches** box of the **Markup Styles** pane, under the **+ Add Custom Match Type** command.

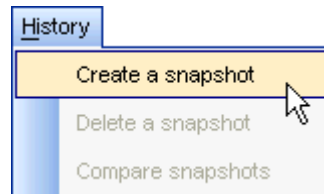


Translation Snapshots

With SYSTRAN Translation Project Manager (STPM) users can take a "snapshot" of a project at any point; a static record that can thereafter be used to analyze translation resource quality and to track the changes of the project over time.

Taking Translation Snapshots

1. Open a project in STPM.
2. Select the **History|Create Snapshot** command.



The **Create a snapshot** dialog will display.



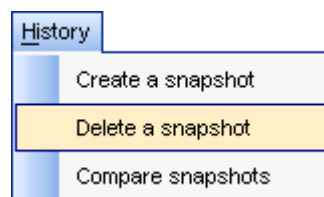
3. Enter a name for the snapshot into the dialog field and click **OK**. A confirmation dialog will display once the snapshot is created.



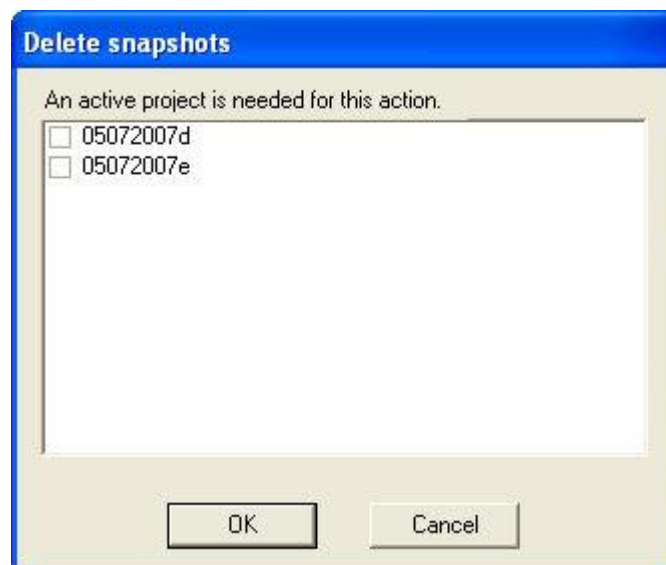
4. Click **OK**.

Deleting Translation Snapshots

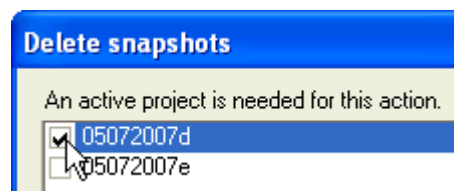
1. In STPM, open the project that correlates to the snapshot to be deleted.
2. Select the **History|Delete Snapshot** command.



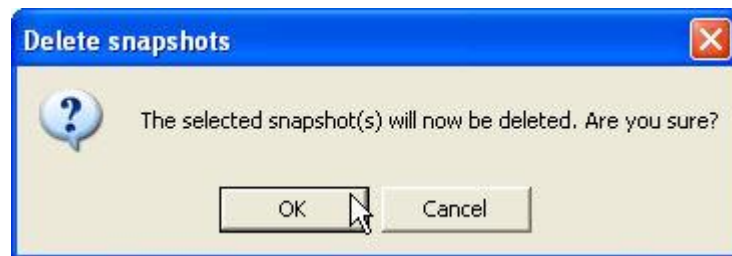
The **Delete snapshots** dialog will display.



3. Tick the checkbox that corresponds to the snapshot that is to be deleted.



4. Click **OK**. A confirmation dialog will display.



5. Click **OK**. A confirmation of the snapshot deletion will display.

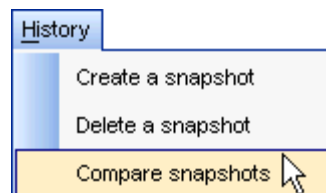


6. Click **OK**.

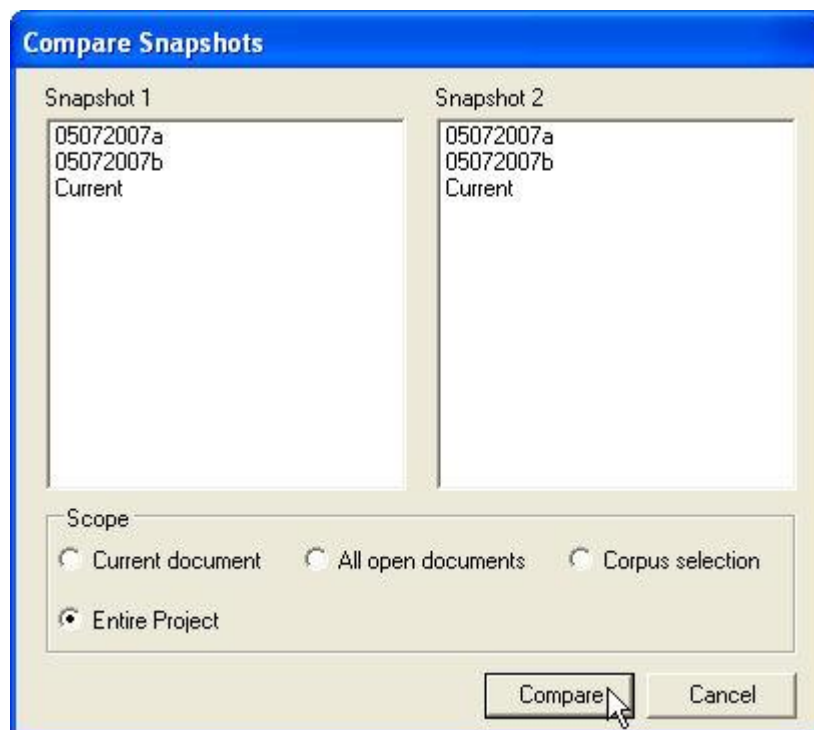
Comparing Snapshots

By comparing project snapshots, users can analyze the quality of their translation resources, track changes to a project over time, and view the current state of a project versus a previous state(s).

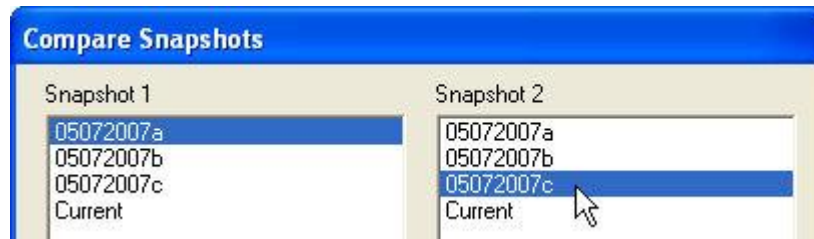
1. In STPM, open the pertinent project.
2. Select the **History|Compare snapshots** command.



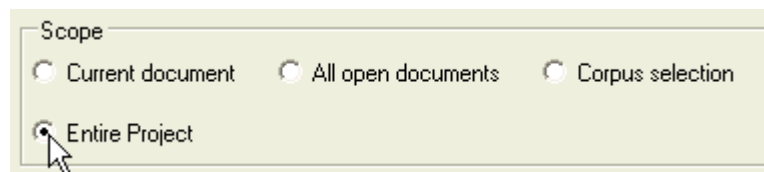
The **Compare Snapshots** dialog will display.



3. Click once on a snapshot name in the provided fields – **Snapshot 1** and **Snapshot 2** – to select it for comparison. Comparison can also be made to project in its current state by clicking **Current**.



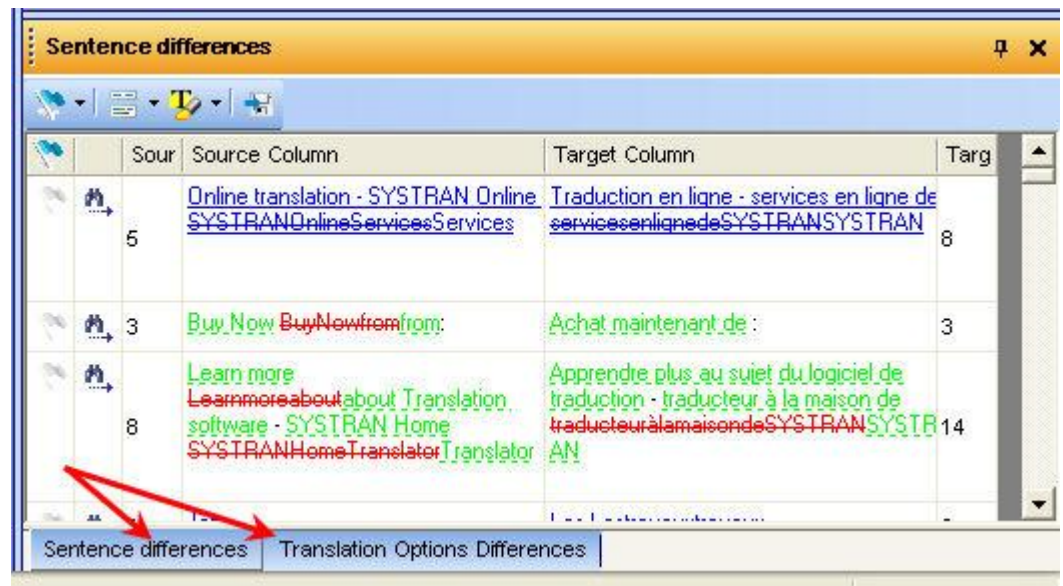
4. Use the provided radio buttons in the dialog's **Scope** box to set the parameters for the comparison.



5. Click **Compare**.



A pane will open displaying two sets of comparison results, each in its own tab: **Sentence differences** and **Translation Option differences**.



6. Employ the pane's toolbar functions as appropriate.

Chapter 4: Understanding Global Options

Remote and Local Profiles

Selecting Remote Profiles

Creating Remote Profiles

Deleting Remote Profiles

Managing Profile Permissions

Toggling Between Local and Remote Mode

Understanding Global Options

SYSTRAN Enterprise Server 6 allows users to set options with the **SYSTRAN Global Options** dialog box as in the SYSTRAN 6 Desktop Products.

The **SYSTRAN Global Options** dialog box includes three tabs: **Application Settings**, **Translation Options**, and **License**. Option settings are defined with the user profiles and are described in **Setting Your Global Options** in the *SYSTRAN 6 Desktop User Guide*.

By default, translations are performed on SYSTRAN Enterprise Server 6 (refer to Product deployment)

Silent Installation

Based on a mechanism developed by Macrovision (<http://helpnet.installshield.com>), silent installation involves the creation and use of a *response file*. This response file corresponds to the record of the user installation, and can be edited as necessary.

The **szName** and **szSerial** values can be modified to take into consideration the user name and the Product Serial Number.

A silent installation is possible using the **/s** option in conjunction with the *response file* (i.e., `setup.exe /s /f1"absolute_path/to/YOUR_SETUP.ISS"`). It is also possible using the **/r** command line option on the setup executable, which will record all installation choices in **Setup.iss**, and then place the file in the following Windows directory:

```
setup.exe /r /f1"absolute_path/to/YOUR_SETUP.ISS"
```

Software Manager Deactivation

Software Manager is a tool that SYSTRAN offers that allows for ease of communication with end-users and to provide product upgrades. And it can be used to update local SYSTRAN installations as well.

Software Manager should not be enabled for end-users in cases where administrators need to monitor and control the SYSTRAN product version that is installed on each end-user system. To affect such control, the following parameters must be set at installation: **NOFLEXNET=1** and **DWUSMANAGER=0**.

```
.\Setup.exe /v"NOFLEXNET=1 DWUSMANAGER=0"
```

Setting Up, Updating, and Removing Translation Services on page 44). Translation profiles are stored on the server and can be shared by multiple users (refer to **Selecting Remote Profiles** on page 33)

With access to the local translation mode option (refer to your license), it is possible to work offline (translations are performed locally). This mode is activated by the selection of a local profile (refer to **Toggling between Local and Remote Mode** on page 40).

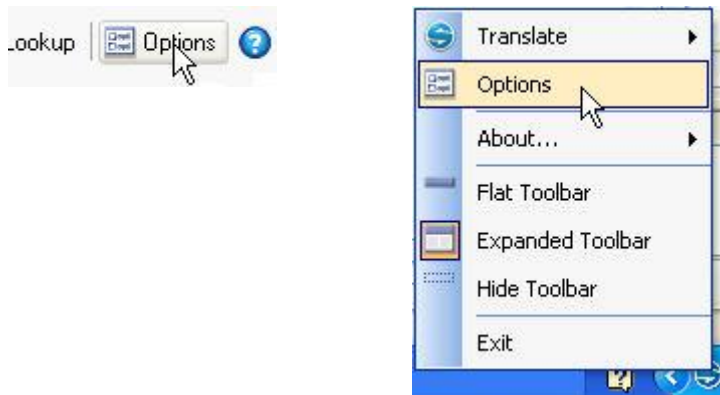
The **SYSTRAN Global Options** dialog box is available within both User Tools and Expert Tools.

Remote and Local Profile

Selecting Remote Profiles

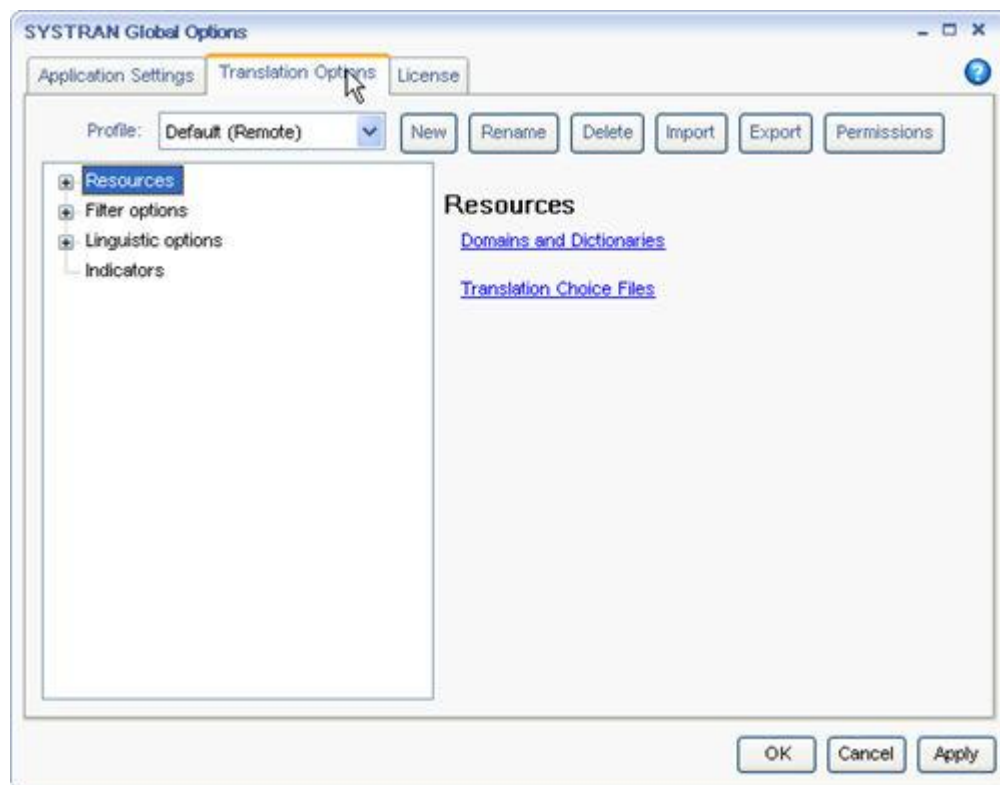
Once a Remote Profile has been defined on the SYSTRAN server (refer to Creating Remote Profiles on page 35) it can be selected for use by all users.

1. Click the **Options** button on the SYSTRAN Translation Toolbar or any application-embedded SYSTRAN Toolbar, or right-click the SYSTRAN Icon and click the **Options** command.



The **SYSTRAN Global Options** dialog will display.

2. Click the **Translation Options** tab. The **Translation Options** screen will display.



3. Use the **Profile** dropdown to select the desired Remote Profile from among those available.



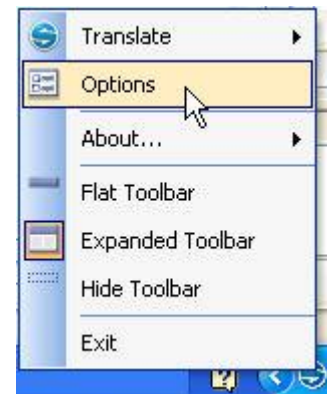
Local profiles are available only to users who are running a SYSTRAN desktop product and Remote profiles are only available to users employing a client-server product (refer to Toggling between Local and Remote Mode on page 40).

4. Click **Apply** to save the new profile, or **OK** to save the new profile and exit the **SYSTRAN Global Options** dialog.

Creating Remote Profiles

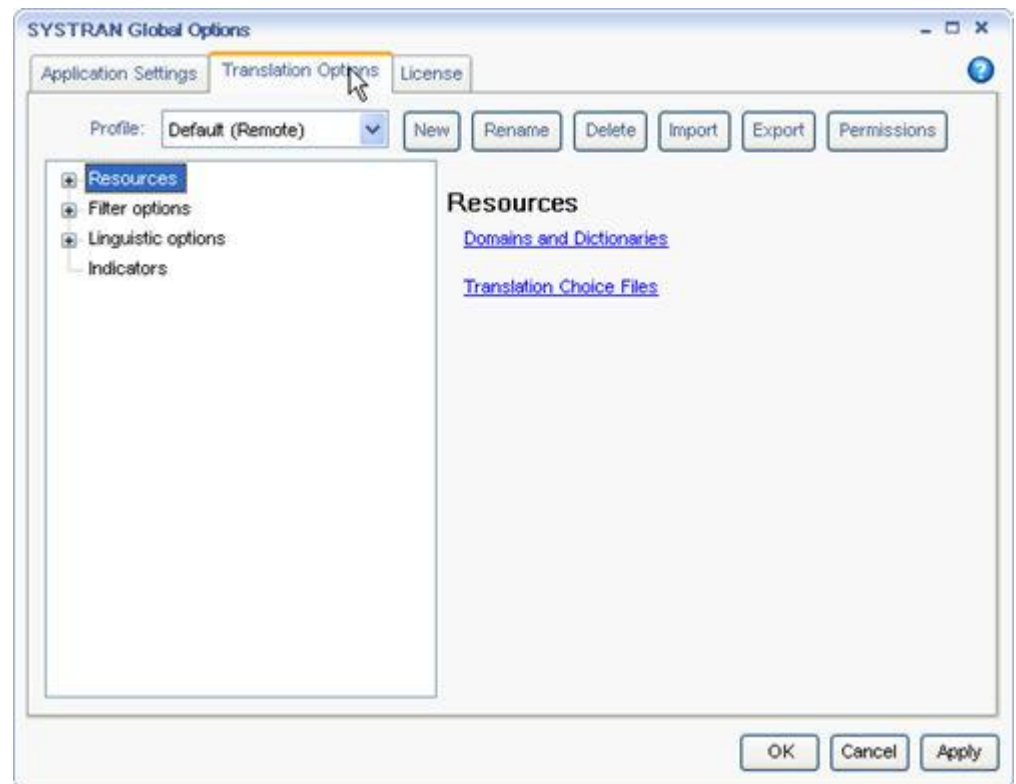
Users who have credentials for creating profiles (dependent on SYSTRAN server configuration) can create remote profiles and possibly share these profiles with other users.

1. Click the **Options** button on the SYSTRAN Translation Toolbar or any application-embedded SYSTRAN Toolbar, or right-click the SYSTRAN Icon and click the **Options** command.



The **SYSTRAN Global Options** dialog will display.

2. Click the **Translation Options** tab. The **Translation Options** screen will display.



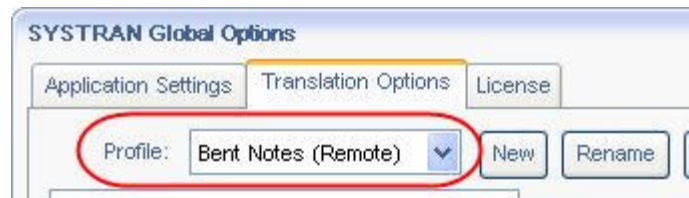
3. Click to open the **New Profile** dialog box.



4. Enter a name for the new file in the **Profile name** field.
5. Indicate that the new profile as **Remote** using the **Service** dropdown and click **OK**.



The new profile name displays in the **Profile** list box at the top of the dialog.

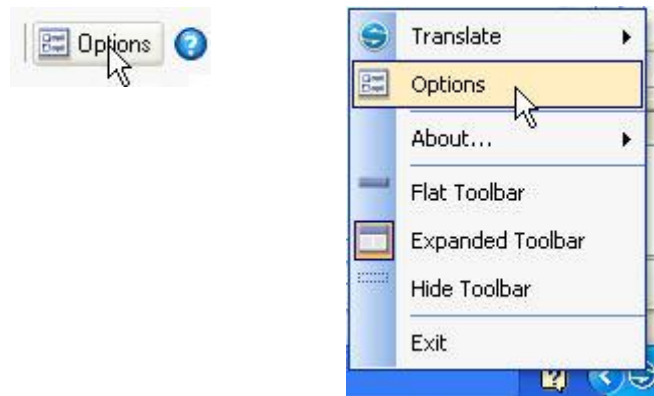


6. Enter Translation Option settings for the new profile (refer to **Translation Options** in the *SYSTRAN 6 Desktop User Guide*).
7. Click **Apply** to save the new profile, or **OK** to save the new profile and exit the SYSTRAN Global Options dialog.

Deleting Remote Profiles

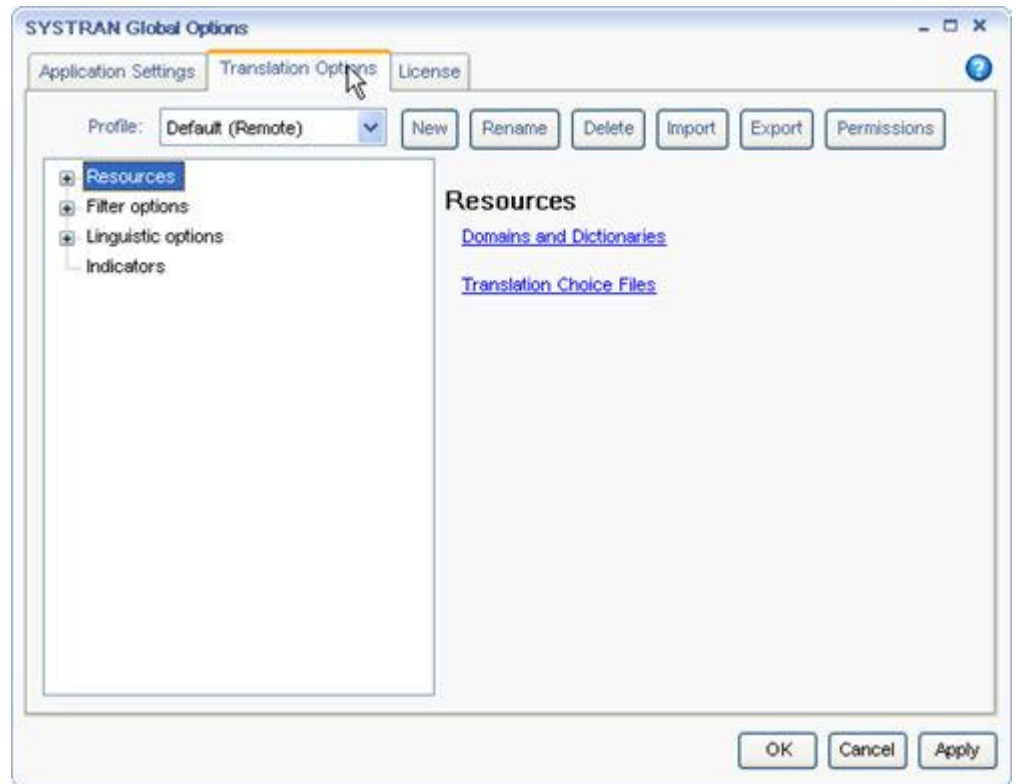
Typically, to remove a remote profile a user must be granted the right to do so by a SYSTRAN server administrator.

1. Click the **Options** button on the SYSTRAN Translation Toolbar or any application-embedded SYSTRAN Toolbar, or right-click the SYSTRAN Icon and click the **Options** command.



The **SYSTRAN Global Options** dialog will display.

2. Click the **Translation Options** tab. The **Translation Options** screen will display.

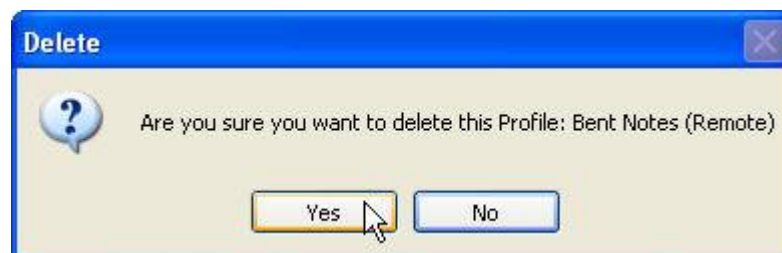


- Using the **Profile** dropdown, indicate the profile to be deleted.



- Local** profiles are available only to users who are running a SYSTRAN desktop product and Remote profiles are only available to users employing a client-server product (refer to [Toggling between Local and Remote Mode](#)).

- Click **Delete**. A **Delete** confirmation dialog will display.



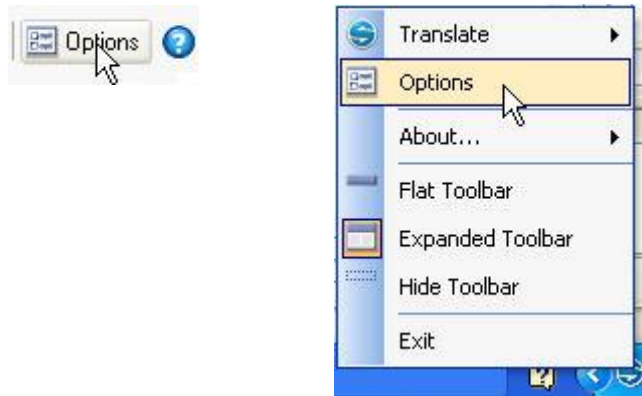
5. Click **Yes** to delete the indicated remote profile.

Managing Profile Permissions

In creating a profile, a user can make the profile public (available to the entire user community) or opt to share the profile with a specific user or group of users.

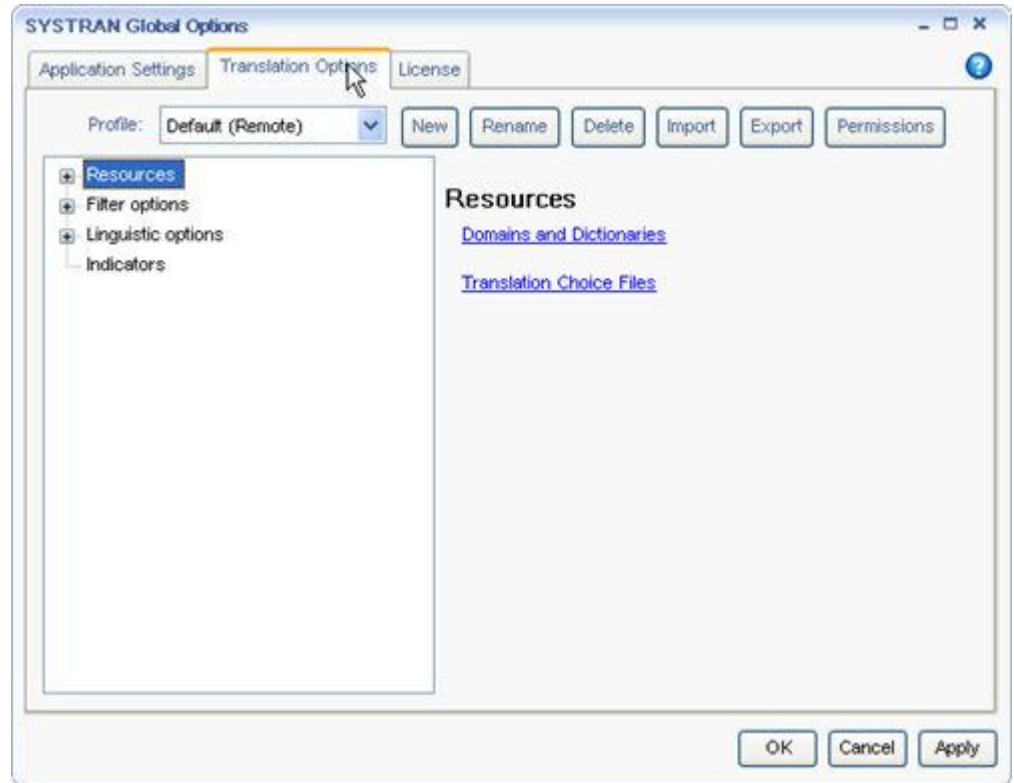
Typically, to configure the permissions for a remote profile a user must be granted the right to do so by a SYSTRAN server administrator.

1. Click the **Options** button on the SYSTRAN Translation Toolbar or any application-embedded SYSTRAN Toolbar, or right-click the SYSTRAN Icon and click the **Options** command.



The **SYSTRAN Global Options** dialog will display.

- Click the **Translation Options** tab. The **Translation Options** screen will display.

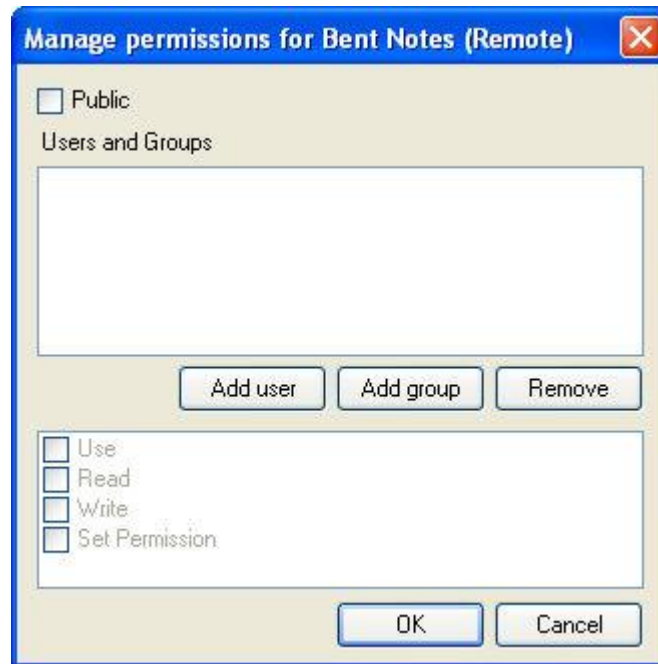


- Using the **Profile** dropdown, indicate the profile whose permissions are to be set or revised.



Permissions cannot be set for **Local** profiles, which are available only to users who are running a SYSTRAN desktop product.

- Click **Permissions**. The **Manage permissions** dialog will display.



5. Configure the permissions for the profile as appropriate.
 - Tick the **Public** checkbox if the profile is to be generally available.
 - Use the **Add user** and **Add group** buttons to configure a specific audience for the profile. The members of this audience will display in the **Users and Groups** box.
 - Using the provided checkboxes, set permission levels for the profile audience: **Use**, **Read**, **Write**, **Set Permission**.
 - To delete a user or group from the profile audience, tick the checkbox alongside the name and click **Remove**.
6. Click **OK**.

Toggling between Local and Remote Mode

Users who have an installed SYSTRAN 6 Desktop Product combined with an Application Packs application can toggle between the two modes via the **SYSTRAN Global Options** dialog. Consequently, users can either work online and be connected to SYSTRAN Enterprise Server 6 or work offline.

The offline/online working mode is defined by the use of a Remote profiles require the definition of a Translation Service server 6 (refer to Product deployment Silent Installation

Based on a mechanism developed by Macrovision (<http://helpnet.installshield.com>), silent installation involves the creation and use of a *response file*. This response file corresponds to the record of the user installation, and can be edited as necessary.

The **szName** and **szSerial** values can be modified to take into consideration the user name and the Product Serial Number.

A silent installation is possible using the **/s** option in conjunction with the *response file* (i.e., `setup.exe /s /f1"absolute_path/to/YOUR_SETUP.ISS"`). It is also possible using the **/r** command line option on the setup executable, which will record all installation choices in **Setup.iss**, and then place the file in the following Windows directory:

```
setup.exe /r /f1"absolute_path/to/YOUR_SETUP.ISS"
```

Software Manager Deactivation

Software Manager is a tool that SYSTRAN offers that allows for ease of communication with end-users and to provide product upgrades. And it can be used to update local SYSTRAN installations as well.

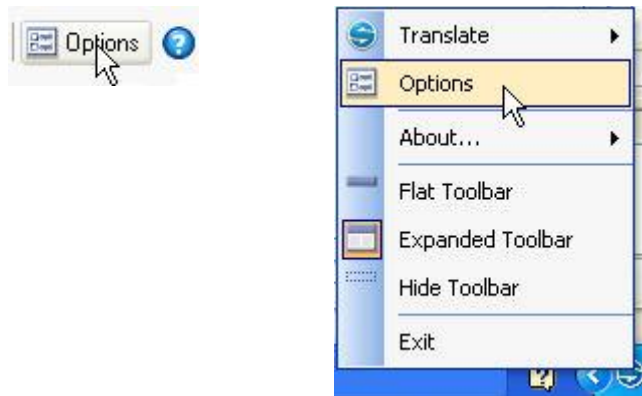
Software Manager should not be enabled for end-users in cases where administrators need to monitor and control the SYSTRAN product version that is installed on each end-user system. To affect such control, the following parameters must be set at installation: **NOFLEXNET=1** and **DWUSMANAGER=0**.

```
.\Setup.exe /v"NOFLEXNET=1 DWUSMANAGER=0"
```

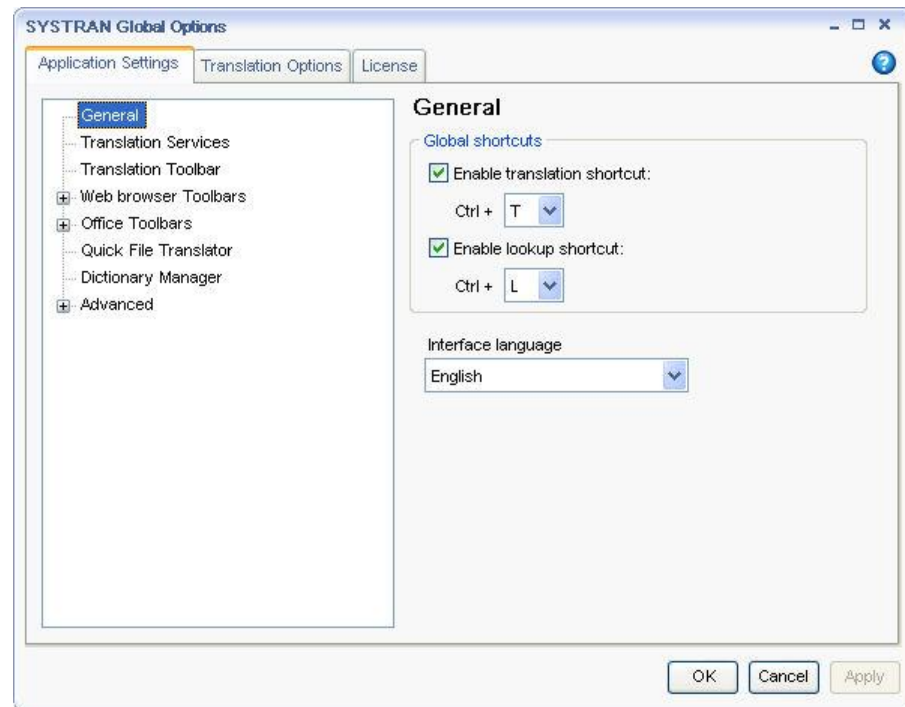
Setting Up, Updating, and Removing Translation Services on page 44).

Please note that the language pairs available when translating are determined by the desktop product installation or the configuration of the SYSTRAN server, depending on whether you are working in local or remote mode. As such, translations made locally with a server language pair (or vice-versa) will result in an error message.

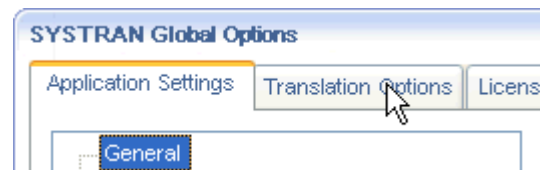
1. Click the **Options** button on the SYSTRAN Translation Toolbar or any application-embedded SYSTRAN Toolbar, or right-click the SYSTRAN Icon and click the **Options** command.



The **SYSTRAN Global Options** dialog will display, showing the **Application Settings** tab by default.



2. Click the **Translation Options** tab.



3. Set the default mode using the **Profile** dropdown.



4. Click **Apply** to select the indicated mode, or click **OK**.

Chapter 5: Configuration

Product Deployment

Silent Installation

Software Manager Deactivation

Setting Up, Updating, and Removing Translation Services

Setting Up a Translation Service

Updating a Translation Service

Removing a Translation Service

Configuration

SYSTRAN Enterprise Server 6 - Application Packs offer an intuitive user interface to perform installation. Once installed, adjustments are made to the installation in the same manner as for SYSTRAN Desktop Products, the steps for which are detailed in **Adjusting Your SYSTRAN Installation** in the *SYSTRAN 6 Desktop User Guide*.

Product deployment

Silent Installation

Based on a mechanism developed by Macrovision (<http://helpnet.installshield.com>), silent installation involves the creation and use of a *response file*. This response file corresponds to the record of the user installation, and can be edited as necessary.

The **szName** and **szSerial** values can be modified to take into consideration the user name and the Product Serial Number.

A silent installation is possible using the **/s** option in conjunction with the *response file* (i.e., `setup.exe /s /f1"absolute_path/to/YOUR_SETUP.ISS"`). It is also possible using the **/r** command line option on the setup executable, which will record all installation choices in **Setup.iss**, and then place the file in the following Windows directory:

```
setup.exe /r /f1"absolute_path/to/YOUR_SETUP.ISS"
```

Software Manager Deactivation

Software Manager is a tool that SYSTRAN offers that allows for ease of communication with end-users and to provide product upgrades. And it can be used to update local SYSTRAN installations as well.

Software Manager should not be enabled for end-users in cases where administrators need to monitor and control the SYSTRAN product version that is installed on each end-user system. To affect such control, the following parameters must be set at installation: **NOFLEXNET=1** and **DWUSMANAGER=0**.

```
.\Setup.exe /v"NOFLEXNET=1 DWUSMANAGER=0"
```

Setting Up, Updating, and Removing Translation Services

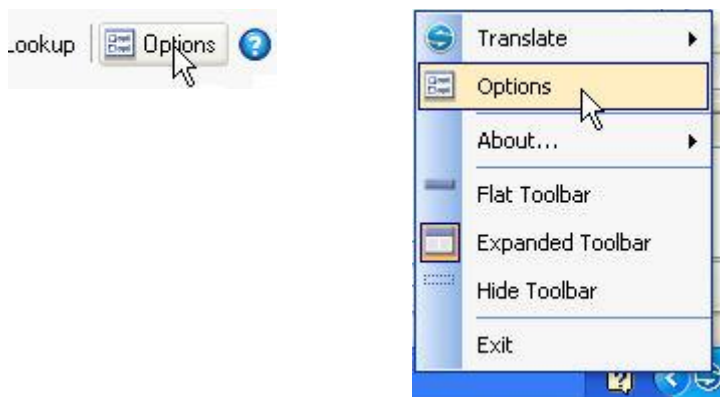
Installation follows regular installation procedure, using your serial number for Client Application Packs. If you are upgrading to a client-server product, follow the procedure described in **Adding a License** in the *SYSTRAN 6 Desktop User Guide*.

Once installation is complete, you must next set up Translations Services. Please refer to Setting Up a Translation Service, following.

Setting Up a Translation Service

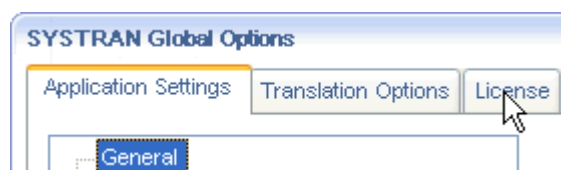
Prior to accessing remote dictionaries SYSTRAN installations must first be configured with a SYSTRAN Enterprise Server 6 Client license.

1. Click the **Options** button on the SYSTRAN Translation Toolbar or any application-embedded SYSTRAN Toolbar, or right-click the SYSTRAN Icon and click the **Options** command.

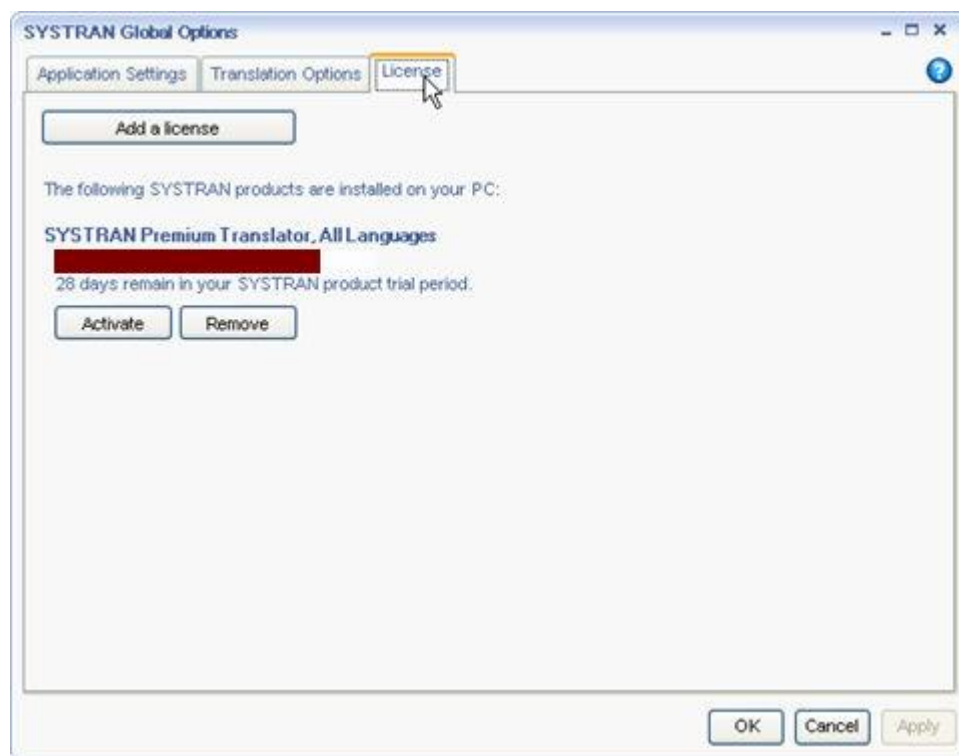


The **SYSTRAN Global Options** dialog will display, showing the **Application Settings** tab by default.

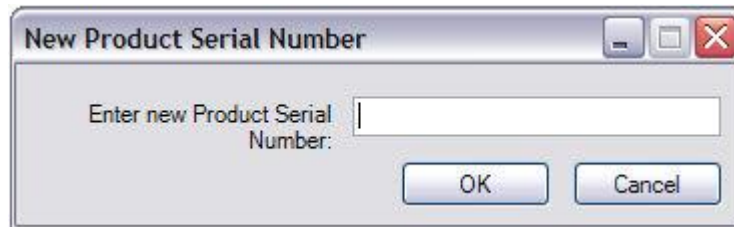
2. Click the **License** tab.



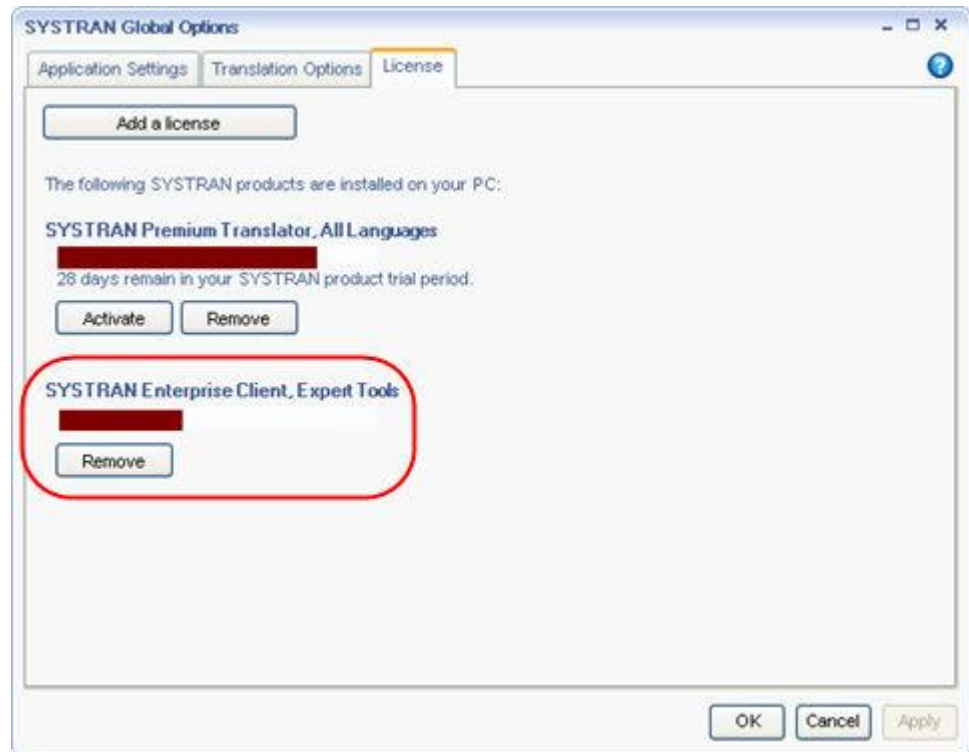
The **License** screen will display.



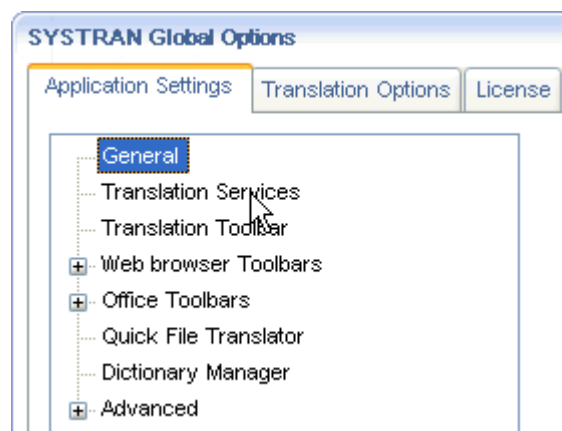
3. Click **Add a License**. The **New Product Serial Number** dialog will display.



4. Enter a valid SYSTRAN Enterprise Server 6 Client serial number and click **OK**. The new license will display in the list.

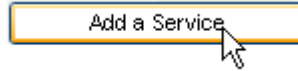


5. Click **OK** to close the dialog.
6. Reopen the **SYSTRAN Global Options** dialog (as indicated in step 1). The **Application Settings|General** tab will display by default.
7. Click the **Translation Services** option.



The **Translation Services** screen will display. Note that prior to configuring the SYSTRAN Enterprise Server 6 Client license the **Translation Services** option was unavailable.

8. Click the **Add a Service** button.



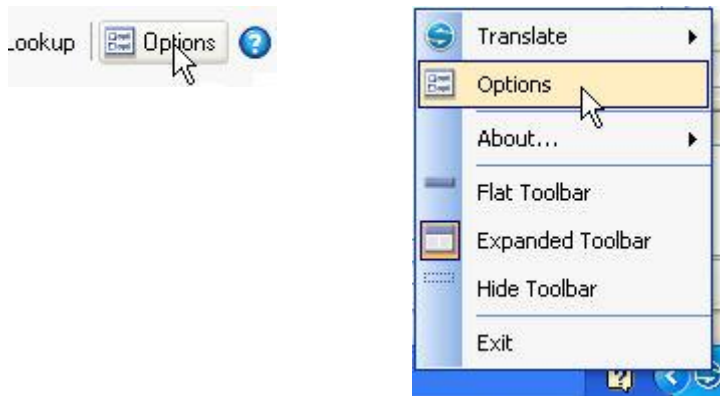
The **Translation Service** dialog will display.

A dialog box titled "Translation Service" with a blue header bar and a red close button. The dialog contains several input fields: "Service Type" is a dropdown menu showing "SYSTRAN Enterprise Server"; "Service Name" is a text field containing "Remote"; "Service Url" is a text field containing "http://"; "Sign In Name" is an empty text field; "Anonymous User" is a checked checkbox; "Password" is an empty text field; and "Confirm Password" is an empty text field. At the bottom, there are three buttons: "Test Connection", "OK", and "Cancel".

9. Enter the appropriate information for the new service's remote connection into the fields provided.
 - Set the server type using the **Server Type** dropdown.
 - Enter a name for the new match type in the **Service Name** field.
 - Using the web address following by /ws for the remote Translation Service in the **Service Url** field.
 - If the remote server requires a username and password, untick the **Anonymous User** checkbox to enable the **Sign In Name**, **Password**, and **Confirm Password** fields. Typically, these security credentials must be in place for users tasked with creating remote profiles (refer to Creating Remote Profiles on page 35).
10. Click **Test Connection** to validate service access.
11. Click **OK** to complete service set up. Indication of the new service will display in the **Application Settings|Translation Services** tab.

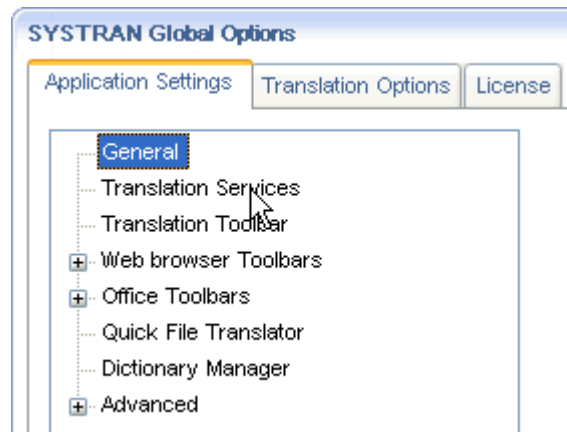
Updating a Translation Service

1. Click the **Options** button on the SYSTRAN Translation Toolbar or any application-embedded SYSTRAN Toolbar, or right-click the SYSTRAN Icon and click the **Options** command.



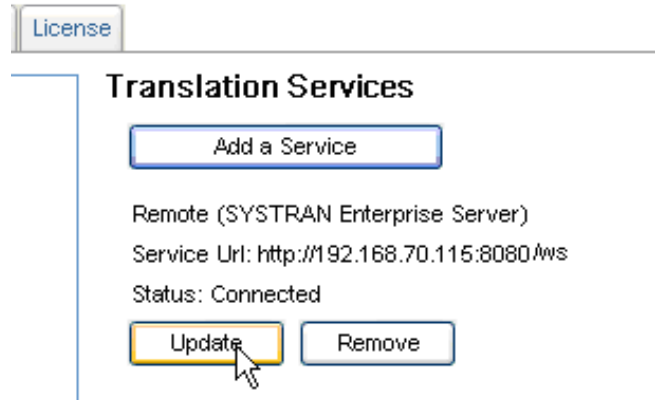
The **SYSTRAN Global Options** dialog will display, showing the **Application Settings** tab by default.

2. Click the **Translation Services** option.

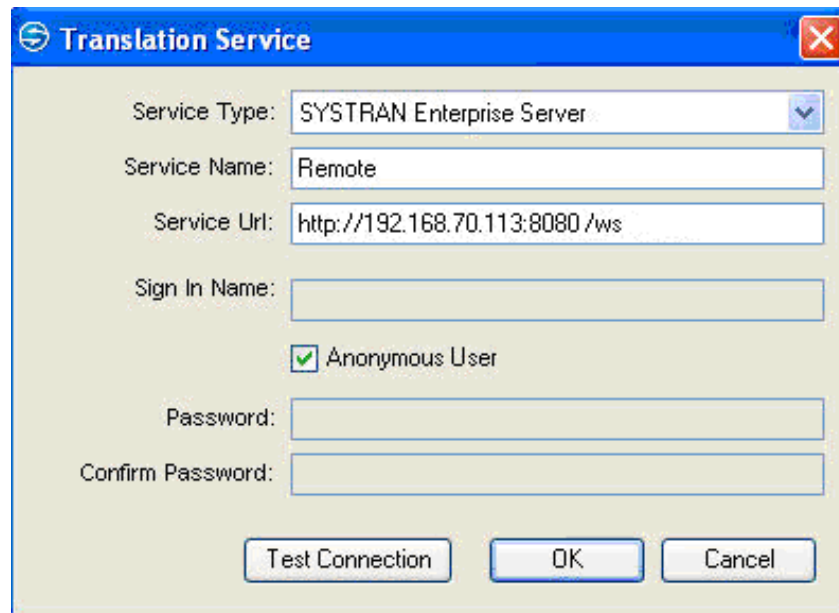


The **Translation Services** screen will display. Note that prior to configuring the SYSTRAN Enterprise Server 6 Client license the **Translation Services** option was unavailable.

- Click the **Update** button directly below the indicator for the appropriate Translation Service.



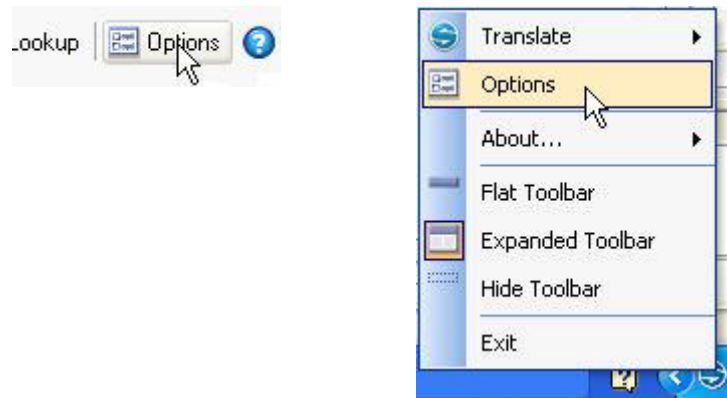
The **Translation Service** dialog will display.



- Edit the appropriate information for the selected service's remote connection into the fields provided.
- Click **Test Connection** to validate service access.
- Click **OK** to complete service set up. Indication of the service update will display in the **Application Settings|Translation Services** tab.

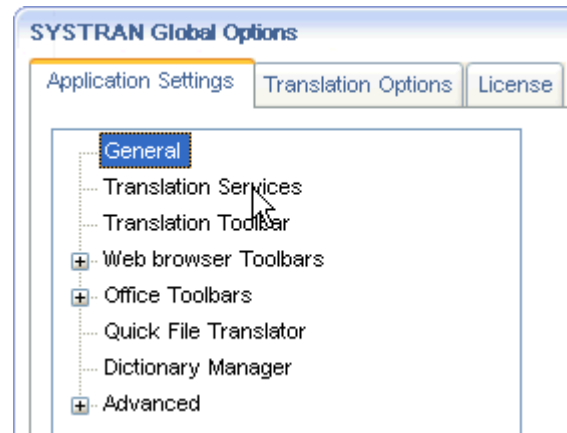
Removing a Translation Service

- Click the **Options** button on the SYSTRAN Translation Toolbar or any application-embedded SYSTRAN Toolbar, or right-click the SYSTRAN Icon and click the **Options** command.



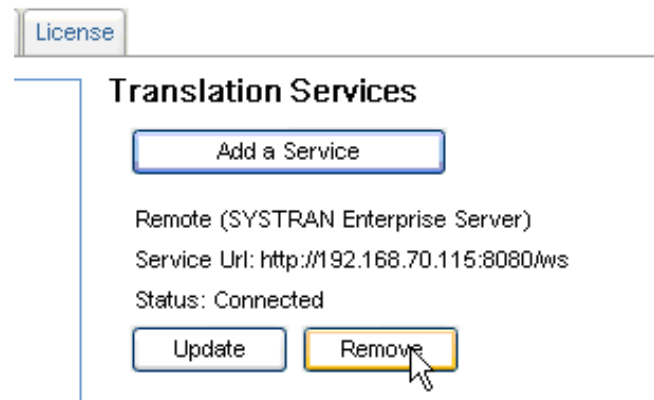
The **SYSTRAN Global Options** dialog will display, showing the **Application Settings** tab by default.

2. Click the **Translation Services** option.



The **Translation Services** screen will display.

3. Click the **Remove** button directly below the indicator for the appropriate Translation Service.



The selected Translation Service is removed and no longer displays in the **Application Settings|Translation Services** tab.

Appendices

Appendix A: Language Pairs

Appendix B: License Agreement

Appendix A: Language Pairs

SYSTRAN Enterprise Server 6 supports the following 52 language pairs:

English ↔ Spanish	French ↔ Spanish
English ↔ German	French ↔ German
English ↔ Italian	French ↔ Italian
English ↔ Portuguese	French ↔ Portuguese
English ↔ Dutch	French ↔ Dutch
English ↔ Greek	French ↔ Greek
English ↔ French	Italian ↔ German
English ↔ Swedish	Italian ↔ Portuguese
English ↔ Japanese	Portuguese ↔ German
English ↔ Korean	Spanish ↔ German
English ↔ Polish	Spanish ↔ Italian
English ↔ Russian	Spanish ↔ Portuguese
English ↔ Arabic	
English ↔ Chinese (Traditional and Simplified)	

Appendix B: License Agreement

END-USER LICENSE AGREEMENT FOR SYSTRAN SOFTWARE

SYSTRAN Desktop Products and Application Packs

PLEASE READ THIS END-USER LICENSE AGREEMENT ("EULA") CAREFULLY.

BY INSTALLING, COPYING OR USING THE SOFTWARE THAT ACCOMPANIES THIS EULA (SOFTWARE), YOU AGREE TO BE BOUND BY THE TERMS OF THIS EULA. IF YOU DO NOT AGREE, DO NOT INSTALL, COPY, OR USE THE SOFTWARE. YOU MAY RETURN IT TO YOUR PLACE OF PURCHASE FOR A FULL REFUND IF APPLICABLE.

1. GENERAL: This End-User License Agreement ("EULA") is a legal agreement between you (either an individual or a single entity) and SYSTRAN SA (SYSTRAN). This EULA governs the Software which includes computer software in object code form (including online and electronic documentation) and any associated media and printed materials. An amendment, addendum, or exhibits to this EULA may accompany the Software. This EULA applies to updates, supplements, add-on components, and Internet-based services components of the Software that SYSTRAN may provide or make available to you unless SYSTRAN provides other terms with the update, supplement, add-on component, and Internet-based services component. SYSTRAN reserves the right to discontinue any Internet-based services provided to you or made available to you through the use of the Software. This EULA also governs any product support services relating to the Software except as may be included in another agreement between you and SYSTRAN.

2. GRANT OF LICENSE.

SYSTRAN grants you the following non-exclusive, non-transferable (unless as described under Section 13 "Software Transfer") rights provided that you comply with all terms and conditions of this EULA:

2.1 Installation and use. You may:

- (a) install and use a copy of the Software on one personal computer or other device; and
- (b) install an additional copy of the Software on a second, portable device for the exclusive use of the primary user of the first copy of the Software.

2.2 Alternative Rights for Storage/Network Use. As an alternative to Section 2.1(a), you may install a copy of the Software on a network storage device, such as a server computer, and allow one access device, such as a personal computer, to access and use that licensed copy of the Software over a private network. You must obtain a license to the Software for each additional device that accesses and uses the Software installed on the network storage device, except as permitted by Section 2.4 of this EULA.

2.3 License Grant for Remote Desktop. You may use remote access technologies to access and use your licensed copy of the Software, provided that only the primary user of the device hosting the remote desktop session accesses and uses the Software with a remote access device. These remote desktop rights do not permit you to use the Software on both the device hosting the remote desktop session and the access device at the same time.

2.4 License Grant for Remote Assistance. You may permit any device to access and use your licensed copy of the Software for the sole purpose of providing you with technical support and maintenance services.

2.5 License Grant for Documentation. The documentation that accompanies the Software is licensed for internal, non-commercial reference purposes only.

By accepting this Software EULA, you agree to exclude any type of use not expressly authorized, including translation of the Software, adaptation, creation of derivative programs, change or arrangement, in whole or in part, without prior written permission from SYSTRAN. Any use other than that provided for under this EULA requires a specific license with an additional fee.

3. DESCRIPTION OF OTHER RIGHTS AND LIMITATIONS

3.1 Mandatory Activation. THERE ARE TECHNOLOGICAL MEASURES IN THIS SOFTWARE THAT ARE DESIGNED TO PREVENT UNLICENSED USE OF THE SOFTWARE. You may not be able to exercise your rights to the Software under this EULA after a finite number of product launches unless you activate your copy of the Software in the manner described during the launch sequence. You may also need to reactivate the Software if you modify your computer hardware or alter the Software. SYSTRAN will use those measures to confirm you have a legally licensed copy of the Software. If you are not using a licensed copy of the Software, you are not allowed to install the Software or future Software updates. SYSTRAN will not collect any personally identifiable information from your device during this process.

3.2 Internet-Based Services. You may not use any SYSTRAN Internet-based services associated with the Software in any manner that could damage, disable, overburden, or impair such services or interfere with any other party's use and enjoyment of them. You may not attempt to gain unauthorized access to any service, account, computer systems or networks associated with the Internet-based services.

4. OWNERSHIP AND RESERVATION OF RIGHTS. SYSTRAN reserves all rights not expressly granted to you in this EULA. The Software is protected by copyright and other intellectual property laws and treaties. SYSTRAN or its suppliers own the title, copyright, and other intellectual property rights in the Software. The Software is licensed, not sold. This EULA does not grant you any rights to trademarks, service marks or logos of SYSTRAN.

5. LIMITATIONS ON REVERSE ENGINEERING, DECOMPIlation, AND DISASSEMBLY. You may not reverse engineer, decompile, or disassemble the Software, except and only to the extent that such activity is expressly permitted by applicable law notwithstanding this limitation.

6. NO RENTAL/COMMERCIAL HOSTING. You may not rent, lease, lend or provide commercial hosting services with the Software by uploading or distributing it, in any form or by any means, including the Internet or Minitel.

7. CONSENT TO USE OF DATA. You agree that SYSTRAN and its affiliates may collect and use technical information gathered as part of the product support services provided to you, if any, related to the Software. SYSTRAN may use this information solely to improve SYSTRAN products or to provide customized services or technologies to you and will not disclose this information in a form that personally identifies you.

8. LINKS TO THIRD-PARTY SITES. SYSTRAN is not responsible for the contents of any third-party sites or services, any links contained in third-party sites or services, or any changes or updates to third-party sites or services. SYSTRAN is providing these links and access to third-party sites and services to you only as a convenience, and the inclusion of any link or access does not imply an endorsement by SYSTRAN of the third-party site or service.

9. ADDITIONAL SOFTWARE/SERVICES. This EULA applies to updates, supplements, add-on components, or Internet-based services components, of the Software that SYSTRAN may provide to you or make available to you after the date you obtain your initial copy of the Software, unless they are accompanied by separate terms. SYSTRAN reserves the right to discontinue Internet-based services provided to you or made available to you through the use of the Software.

10. UPGRADES. To use Software identified as an upgrade, you must first be licensed for the software identified by SYSTRAN as eligible for the upgrade. After installing the upgrade, you may no longer use the original software that formed the basis for your upgrade eligibility, except as part of the upgraded software.

11. NOT FOR RESALE SOFTWARE. Software identified as "Not for Resale" or "NFR," may not be sold or otherwise transferred for value, or used for any purpose other than demonstration, test or evaluation.

12. SEPARATION OF COMPONENTS. The Software is licensed as a single product. Its component parts may not be separated for use on more than one device.

13. SOFTWARE TRANSFER.

Internal. You may transfer your copy of the Software to a different device. After the transfer, you must completely remove the Software from the former device.

Transfer to Third Party. If you are the person who initially licensed the Software, you may make a one-time permanent transfer of this EULA, Software and Certificate of Authenticity (if applicable) to another end-user, provided that you do not retain any copies of the Software. This transfer must include all of the Software (including all component parts, the media and printed materials, any upgrades, this EULA, and, if applicable, the Certificate of Authenticity). The transfer may not be an indirect transfer, such as a consignment. Prior to the transfer, the end-user receiving the Software must agree to all the EULA terms.

14. LIMITED WARRANTY FOR SOFTWARE.

SYSTRAN warrants that the Software will perform substantially in accordance with the accompanying materials for a period of ninety (90) days from the date of receipt.

If an implied warranty or condition is created by your state/jurisdiction and federal or state/provincial law prohibits disclaimer of it, you also have an implied warranty or condition, BUT ONLY AS TO DEFECTS DISCOVERED DURING THE PERIOD OF THIS LIMITED WARRANTY (NINETY DAYS). AS TO ANY DEFECTS DISCOVERED AFTER THE NINETY DAY PERIOD, THERE IS NO WARRANTY OR CONDITION OF ANY KIND. Some states/jurisdictions do not allow limitations on how long an implied warranty or condition lasts, so the above limitation may not apply to you.

Any supplements or updates to the Software, including without limitation, any (if any) service packs or hotfixes provided to you after the expiration of the ninety day Limited Warranty period are not covered by any warranty or condition, express, implied or statutory.

LIMITATION ON REMEDIES; NO CONSEQUENTIAL OR OTHER DAMAGES. Your exclusive remedy for any breach of this Limited Warranty is as set forth below. Except for any refund elected by SYSTRAN, YOU ARE NOT ENTITLED TO ANY DAMAGES, INCLUDING BUT NOT LIMITED TO CONSEQUENTIAL DAMAGES, if the Software does not meet SYSTRAN's Limited Warranty, and, to the maximum extent allowed by applicable law, even if any remedy fails of its essential purpose. The terms of Section 16 ("Exclusion of Incidental, Consequential and Certain Other Damages") are also incorporated into this Limited Warranty. Some states/jurisdictions do not allow the exclusion or limitation of incidental or consequential damages, so the above limitation or exclusion may not apply to you. This Limited Warranty gives you specific legal rights. You may have other rights which vary from state/jurisdiction to state/jurisdiction. YOUR EXCLUSIVE REMEDY. SYSTRAN's and its suppliers' entire liability and your exclusive remedy for any breach of this Limited Warranty or for any other breach of this EULA or for any other liability relating to the Software shall be, at SYSTRAN's option from time to time exercised subject to applicable law, (a) return of the amount paid (if any) for the Software, or (b) repair or replacement of the Software, that does not meet this Limited Warranty and that is returned to SYSTRAN with a copy of your receipt. You will receive the remedy elected by SYSTRAN without charge, except that you are responsible for any expenses you may incur (e.g. cost of shipping the Software to SYSTRAN). This Limited Warranty is void if failure of the Software has resulted from accident, abuse, misapplication, abnormal use or a virus. Any replacement Software will be warranted for the remainder of the original warranty period or thirty (30) days, whichever is longer. To exercise your remedy, contact: SYSTRAN SA, Attn. SYSTRAN Customer Support / La Grande Arche, 1 parvis de La Défense 92044 Paris La défense Cedex, France, or the SYSTRAN subsidiary serving your country.

15. **DISCLAIMER OF WARRANTIES.** The Limited Warranty that appears above is the only express warranty made to you and is provided in lieu of any other express warranties or similar obligations (if any) created by any advertising, documentation, packaging, or other communications. Except for the Limited Warranty and to the maximum extent permitted by applicable law, SYSTRAN and its suppliers provide the Software and support services (if any) AS IS AND WITH ALL FAULTS, and hereby disclaim all other warranties and conditions, whether express, implied or statutory, including, but not limited to, any (if any) implied warranties, duties or conditions of merchantability, of fitness for a particular purpose, of reliability or availability, of accuracy or completeness of responses, of results, of workmanlike effort, of lack of viruses, and of lack of negligence, all with regard to the Software, and the provision of or failure to provide support or other services, information, software, and related content through the Software or otherwise arising out of the use of the Software. ALSO, THERE IS NO WARRANTY OR CONDITION OF TITLE, QUIET ENJOYMENT, QUIET POSSESSION, CORRESPONDENCE TO DESCRIPTION OR NON-INFRINGEMENT WITH REGARD TO THE SOFTWARE.

16. **EXCLUSION OF INCIDENTAL, CONSEQUENTIAL AND CERTAIN OTHER DAMAGES.** TO THE MAXIMUM EXTENT PERMITTED BY APPLICABLE LAW, IN NO EVENT SHALL SYSTRAN OR ITS SUPPLIERS BE LIABLE FOR ANY SPECIAL, INCIDENTAL, PUNITIVE, INDIRECT, OR CONSEQUENTIAL DAMAGES WHATSOEVER (INCLUDING, BUT NOT LIMITED TO, DAMAGES FOR LOSS OF PROFITS OR CONFIDENTIAL OR OTHER INFORMATION, FOR BUSINESS INTERRUPTION, FOR PERSONAL INJURY, FOR LOSS OF PRIVACY, FOR FAILURE TO MEET ANY DUTY INCLUDING OF GOOD FAITH OR OF REASONABLE CARE, FOR NEGLIGENCE, AND FOR ANY OTHER PECUNIARY OR OTHER LOSS WHATSOEVER) ARISING OUT OF OR IN ANY WAY RELATED TO THE USE OF OR INABILITY TO USE THE SOFTWARE, THE PROVISION OF OR FAILURE TO PROVIDE SUPPORT OR OTHER SERVICES, INFORMATION, SOFTWARE, AND RELATED CONTENT THROUGH THE SOFTWARE OR OTHERWISE ARISING OUT OF THE USE OF THE SOFTWARE, OR OTHERWISE UNDER OR IN CONNECTION WITH ANY PROVISION OF THIS EULA, EVEN IN THE EVENT OF THE FAULT, TORT (INCLUDING NEGLIGENCE), MISREPRESENTATION, STRICT LIABILITY, BREACH OF CONTRACT OR BREACH OF WARRANTY OF SYSTRAN OR ANY SUPPLIER, AND EVEN IF SYSTRAN OR ANY SUPPLIER HAS BEEN ADVISED OF THE POSSIBILITY OF SUCH DAMAGES.

17. **LIMITATION OF LIABILITY AND REMEDIES.** Notwithstanding any damages that you might incur for any reason whatsoever (including, without limitation, all damages referenced herein and all direct or general damages in contract or anything else), the entire liability of SYSTRAN and any of its suppliers under any provision of this EULA and your exclusive remedy hereunder (except for any remedy of repair or replacement elected by SYSTRAN with respect to any breach of the Limited Warranty) shall be limited to the greater of the actual damages you incur in reasonable reliance on the Software up to the amount actually paid by you for the Software or 5.00 Euros or US \$5.00. The foregoing limitations, exclusions and disclaimers (including Sections 14, 15 and 16) shall apply to the maximum extent permitted by applicable law, even if any remedy fails its essential purpose.

18. **TERMINATION.** This EULA remains in force for the whole legal duration of the Software copyright. Without prejudice to any other rights, SYSTRAN may terminate this EULA if you fail to comply with the terms and conditions of this EULA. In such event, SYSTRAN shall keep the sums paid by you and you must (i) immediately cease using the Software (ii) effect its de-installation and return to SYSTRAN within a period of eight (8) days after notification of the termination, and (iii) destroy all copies of the Software and all of its component parts. .

19. **CONFIDENTIALITY.** You agree not to disclose any documents or information communicated by SYSTRAN in the course of the performance of this EULA and you also agree to have these measures observed by your employees.

20. **APPLICABLE LAW – DISPUTES.** If you acquired the Software in The United States, this EULA is governed by the laws of the State of California. If you acquired this Software in France, then French law applies. If you acquired the Software in any other country, then local laws may apply.

21. FORCE MAJEURE. SYSTRAN shall not be held liable in case of impossibility or delay in performance of the EULA due to labor disputes, force majeure or any other event beyond its control.

22. ENTIRE AGREEMENT; SEVERABILITY. This EULA (including any addendum, amendment or exhibits to this EULA which is included with the Software) is the entire agreement between you and SYSTRAN relating to the Software and the support services (if any) and they supersede all prior or contemporaneous oral or written communications, proposals and representations with respect to the Software or any other subject matter covered by this EULA. To the extent the terms of any SYSTRAN policies or programs for support services conflict with the terms of this EULA, the terms of this EULA shall control. If any provision of this EULA is held to be void, invalid, unenforceable or illegal, the other provisions shall continue in full force and effect.

Si vous avez acquis votre produit SYSTRAN au CANADA, la garantie limitée suivante vous concerne :

GARANTIE LIMITÉE

SYSTRAN garantit que le Logiciel fonctionnera conformément aux documents inclus pendant une période de 90 jours suivant la date de réception.

Si une garantie ou condition implicite est créée par votre État ou votre territoire et qu'une loi fédérale ou provinciale ou État en interdit le déni, vous jouissez également d'une garantie ou condition implicite, MAIS UNIQUEMENT POUR LES DÉFAUTS DÉCOUVERTS DURANT LA PÉRIODE DE LA PRÉSENTE GARANTIE LIMITÉE (QUATRE-VINGT-DIX JOURS). IL N'Y A AUCUNE GARANTIE OU CONDITION DE QUELQUE NATURE QUE CE SOIT QUANT AUX DÉFAUTS DÉCOUVERTS APRÈS CETTE PÉRIODE DE QUATRE-VINGT-DIX JOURS. Certains États ou territoires ne permettent pas de limiter la durée d'une garantie ou condition implicite de sorte que la limitation ci-dessus peut ne pas s'appliquer à vous.

Tous les suppléments ou toutes les mises à jour relatifs au Logiciel, notamment, les ensembles de services ou les réparations à chaud (le cas échéant) qui vous sont fournis après l'expiration de la période de quatre-vingt-dix jours de la garantie limitée ne sont pas couverts par quelque garantie ou condition que ce soit, expresse ou implicite.

LIMITATION DES RECOURS ; ABSENCE DE DOMMAGES INDIRECTS OU AUTRES. Votre recours exclusif pour toute violation de la présente garantie limitée est décrit ci-après. Sauf pour tout remboursement au choix de SYSTRAN, si le Logiciel ne respecte pas la garantie limitée de SYSTRAN et, dans la mesure maximale permise par les lois applicables, même si tout recours n'atteint pas son but essentiel, VOUS N'AVEZ DROIT À AUCUNS DOMMAGES, NOTAMMENT DES DOMMAGES INDIRECTS. Les modalités de la clause «Exclusion des dommages accessoires, indirects et de certains autres dommages » sont également intégrées à la présente garantie limitée. Certains États ou territoires ne permettent pas l'exclusion ou la limitation des dommages indirects ou accessoires de sorte que la limitation ou l'exclusion ci-dessus peut ne pas s'appliquer à vous. La présente garantie limitée vous donne des droits légaux spécifiques. Vous pouvez avoir d'autres droits qui peuvent varier d'un territoire ou d'un État à un autre. VOTRE RECOURS EXCLUSIF. L'obligation intégrale de SYSTRAN et de ses fournisseurs et votre recours exclusif seront, selon le choix de SYSTRAN de temps à autre sous réserve de toute loi applicable, a) le remboursement du prix payé, le cas échéant, pour le Logiciel ou b) la réparation ou le remplacement du Logiciel qui ne respecte pas la présente garantie limitée et qui est retourné à SYSTRAN avec une copie de votre reçu. Vous recevrez la compensation choisie par SYSTRAN, sans frais, sauf que vous êtes responsable des dépenses que vous pourriez engager (par exemple, les frais d'envoi du Logiciel à SYSTRAN). La présente garantie limitée est nulle si la défectuosité du Logiciel est causée par un accident, un usage abusif, une mauvaise application, un usage anormal ou un virus. Tout Logiciel de remplacement sera garanti pour le reste de la période de garantie initiale ou pendant trente (30) jours, selon la plus longue entre ces deux périodes. Pour exercer votre recours, vous devez communiquer avec SYSTRAN et vous adresser à SYSTRAN SA, Attn. SYSTRAN Customer Support / La Grande Arche, 1 parvis de La Défense 92044 Paris La défense Cedex, France, ou à la filiale de SYSTRAN de votre pays.

DÉNI DE GARANTIES.

La garantie limitée mentionnée ci-dessus constitue la seule garantie expresse qui vous est donnée et remplace toutes autres garanties expresses (s'il en est) mentionnées dans un document ou sur un emballage. Sauf en ce qui a trait à la garantie limitée et dans la mesure maximale permise par les lois applicables, le Logiciel et les services de soutien technique (le cas échéant) sont fournis TELS QUELS ET AVEC TOUS LES DÉFAUTS par SYSTRAN et ses fournisseurs, lesquels par les présentes dénie toutes autres garanties et conditions expresses, implicites ou en vertu de la loi, notamment (le cas échéant) les garanties, devoirs ou conditions implicites de qualité marchande, d'adaptation à un usage particulier, d'exactitude ou d'exhaustivité des réponses, des résultats, des efforts déployés selon les règles de l'art, d'absence de virus et de négligence, le tout à l'égard du Logiciel et de la prestation des services de soutien technique ou de l'omission d'une telle prestation. PAR AILLEURS, IL N'Y A AUCUNE GARANTIE OU CONDITION QUANT AU TITRE DE PROPRIÉTÉ, À LA JOUISSANCE OU LA POSSESSION PAISIBLE, À LA CONCORDANCE À UNE DESCRIPTION NI QUANT À UNE ABSENCE DE CONTREFAÇON CONCERNANT LE LOGICIEL.

EXCLUSION DES DOMMAGES ACCESSOIRES, INDIRECTS ET DE CERTAINS AUTRES DOMMAGES. DANS LA MESURE MAXIMALE PERMISE PAR LES LOIS APPLICABLES, EN AUCUN CAS SYSTRAN OU SES FOURNISSEURS NE SERONT RESPONSABLES DES DOMMAGES SPÉCIAUX, CONSÉCUTIFS, ACCESSOIRES OU INDIRECTS DE QUELQUE NATURE QUE CE SOIT (NOTAMMENT, LES DOMMAGES À L'ÉGARD DU MANQUE À GAGNER OU DE LA DIVULGATION DE RENSEIGNEMENTS CONFIDENTIELS OU AUTRES, DE LA PERTE D'EXPLOITATION, DE BLESSURES CORPORELLES, DE LA VIOLATION DE LA VIE PRIVÉE, DE L'OMISSION DE REMPLIR TOUT DEVOIR, Y COMPRIS D'AGIR DE BONNE FOI OU D'EXERCER UN SOIN RAISONNABLE, DE LA NÉGLIGENCE ET DE TOUTE AUTRE PERTE PÉCUNIAIRE OU AUTRE PERTE DE QUELQUE NATURE QUE CE SOIT) SE RAPPORTANT DE QUELQUE MANIÈRE QUE CE SOIT À L'UTILISATION DU LOGICIEL OU À L'INCAPACITÉ DE S'EN SERVIR, À LA PRESTATION OU À L'OMISSION D'UNE TELLE PRESTATION DE SERVICES DE SOUTIEN TECHNIQUE OU AUTREMENT AUX TERMES DE TOUTE DISPOSITION DU PRÉSENT EULA OU RELATIVEMENT À UNE TELLE DISPOSITION, MÊME EN CAS DE FAUTE, DE DÉLIT CIVIL (Y COMPRIS LA NÉGLIGENCE), DE RESPONSABILITÉ STRICTE, DE VIOLATION DE CONTRAT OU DE VIOLATION DE GARANTIE DE SYSTRAN OU DE TOUT FOURNISSEUR ET MÊME SI SYSTRAN OU TOUT FOURNISSEUR A ÉTÉ AVISÉ DE LA POSSIBILITÉ DE TELS DOMMAGES.

LIMITATION DE RESPONSABILITÉ ET RECOURS. Malgré les dommages que vous pourriez subir pour quelque motif que ce soit (notamment, tous les dommages susmentionnés et tous les dommages directs ou généraux), l'obligation intégrale de SYSTRAN et de l'un ou l'autre de ses fournisseurs aux termes de toute disposition du présent EULA et votre recours exclusif à l'égard de tout ce qui précède (sauf en ce qui concerne tout recours de réparation ou de remplacement choisi par SYSTRAN à l'égard de tout manquement à la garantie limitée) se limite au plus élevé entre les montants suivants : le montant que vous avez réellement payé pour le Logiciel ou 5,00 Euros ou 5,00 Dollars US. Les limites, exclusions et dénis qui précèdent (y compris les clauses ci-dessus), s'appliquent dans la mesure maximale permise par les lois applicables, même si tout recours n'atteint pas son but essentiel.

