

Your mobile

Quick Start Guide



www.sar-tick.com

This product meets applicable national SAR limits of 1.6 W/kg. The specific maximum SAR values can be found on page 23 of this user guide.

When carrying the product or using it while worn on your body, either use an approved accessory such as a holster or otherwise maintain a distance of 15 mm from the body to ensure compliance with RF exposure requirements. Note that the product may be transmitting even if you are not making a phone call.

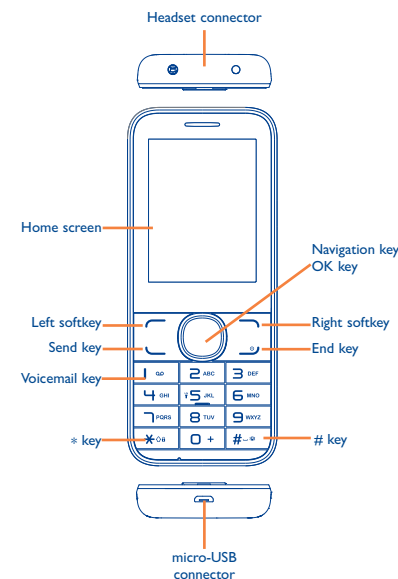


PROTECT YOUR HEARING

To prevent possible hearing damage, do not listen at high volume levels for long periods. Exercise caution when holding your device near your ear while the loudspeaker is in use.

ALCATEL onetouch.

1.1 Keys and connectors



- Press to go left/right/up/down
- Press to confirm an option
- Left softkey
 - Unlock keypad
 - Access main menu
- Send key
 - Answer/Send a call
 - Press: Enter Call log
- Right softkey
 - Access contacts
 - Press: End a call
 - Return to the Home screen
 - Press and hold: Power on/off
 - Press and hold: Access your voicemail

- From home screen
 - Press: 0
 - Press and hold: "+/P/W"
- In Edit mode
 - Press: space
 - Press and hold: 0
- From Idle screen
 - Press: *
- In Edit mode:
 - Press: Access symbols table
 - Press and hold: Change input methods
- From Idle screen
 - Press: #
 - Press and hold: Activate/deactivate Meeting mode
- In Edit mode
 - Press: Change input methods

1.2 Status bar icons ⁽¹⁾

In 2045M:

- Battery charge level**
- Vibrate alert:** your phone vibrates, but does not ring or beep with the exception of the alarm
- Bluetooth status (Activated)**
- Bluetooth status (Connected to an audio device)**
- Headset connected**
- Keypad locked**
- Call forwarding activated:** your calls are forwarded
- Alarm or appointments programmed**
- Level of network reception**
- Voicemail message received**
- Missed calls**

⁽¹⁾ The icons and illustrations in this guide are provided for informational purposes only.

- Roaming**
- GPRS connection status (Activated)**
- GPRS connecting**
- Music activated**
- Incoming MMS message**
- Sending an MMS**
- Silence mode:** your phone does not ring, beep, or vibrate with the exception of the alarm
- Unread SMS message**
- Unread MMS message**
- (Flickering) Message list is full:** your phone cannot accept any new messages. You must access the message list and delete at least one message on your SIM card.

1.3 Home screen

1.3.1 Widget bar

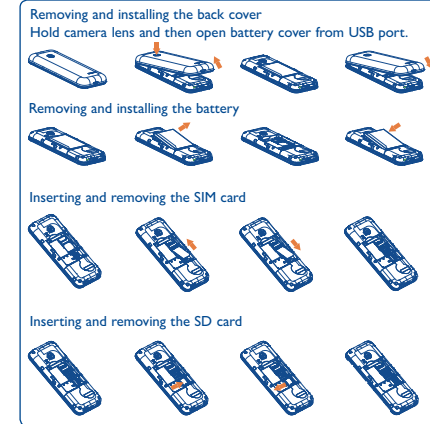
Widgets are convenient shortcuts for quick access from the Home screen. You can customize the widget bar by going to "Settings/Phone settings/Widget bar".

1.3.2 Change wallpaper

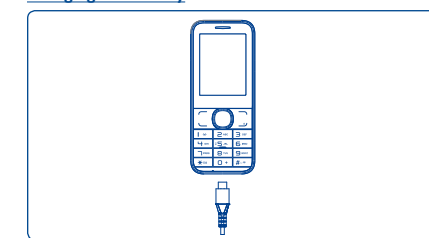
You can select an image to set as the wallpaper by selecting "Options/Use as/Wallpaper".

2 Getting started.....

2.1 Set-up



Charging the battery



Connect the charger to your phone and wall outlet respectively.

To reduce power consumption and energy waste, when battery is fully charged, disconnect your charger from the plug; switch off Bluetooth or background-running applications when not in use; reduce the backlight time, etc.

2.2 Power on your phone

Hold down the key until the telephone powers on.

2.3 Power off your phone

Hold down the key from the Home screen.

3 Making a call

Dial the desired number then press the send key to place the call. The number you entered can be saved to **Contacts** by selecting "Options/Save to contacts". If you make a mistake, press the Right softkey to delete the incorrect numbers.

To hang up the call, press the key.

4 Messages.....

4.1 Access

You can access this menu using the following options:

- Access from the main menu by selecting "Messages".
- Select from the widget bar, and then enter the sub-menu you prefer.

4.2 Write message

You can select "Messages>Create SMS" from the main menu or access from the widget to write text/multimedia message. One or more recipients can be added from the contact list. Press "Contacts" through to multi-select recipients from Contacts. An SMS will be converted to MMS automatically when images, videos, audio, slides, or attachments are inserted; or if the message contains more than 8 pages of text.



An SMS message of more than a certain number of characters (the number of characters depends on your language) will be billed as several SMS messages. An MMS message containing photos and/or sounds may also be billed as more than one message. Specific letters (accent) will increase the size of the SMS messages, this may cause multiple SMS messages to be sent to your recipient.

5 Contacts

5.1 Consulting your contacts

You can access this function by selecting "Contacts" from the main menu.

5.2 Adding a contact

You can add a new contact to your phone or SIM card by selecting "Add contact".

6 Call log

6.1 Access

You can access this function using the following options:

- Select from the main menu.
- Press the send key from the Home screen.
- Select from the widget bar, and then enter the sub-menu you prefer.

6.2 Available options

When you press "Options", you can have access to **View, Send message, Save to Contacts, Edit before call, Add to blacklist, Add to whitelist, Delete, etc.**

7 Facebook.....

Facebook is a social media application that connects people with friends and others who work, study and live around them. It provides a number of features with which users interact, such as Wall, Pokes, etc.

To open an account online, please go to: <http://m.facebook.com/>.

8 Twitter

Twitter is a social networking and microblogging service that has gained notability and popularity worldwide. This feature enables phone users to exchange news updates and ideas with a community in the form of messages or posts. Posts are displayed on the author's profile page and delivered to the author's subscribers or followers.

To open an account online, please go to: <http://m.twitter.com>.

9 Apps ⁽¹⁾

Apps store is an online software store where you can download and install applications and games to your phone.

10 Apps mgr

Manage your downloaded applications and games.

11 Camera

Your mobile phone is fitted with a camera for taking photos and recording videos that you can use in different ways:

- store them as your creations in SD card or phone.
- send them in a multimedia message (MMS) to a mobile phone.
- send them directly by MMS, Bluetooth.
- customize your Home screen.
- select them as incoming call image to a contact in your Contacts.
- transfer them by data cable or microSD card to your computer.

12 Music

You can access this feature from the main menu by selecting "Music".

You will have full flexibility of managing music both on your mobile and SD card.

13 Images.....

A library links to the images (stored in "Photos") in phone or SD card to multi-mark, set as wallpaper, power on/off display and incoming call image or sent by MMS, Bluetooth.

14 Videos

Contains all video clips (stored in "Videos") on your phone or SD card and enables you to play, send, delete, rename, etc.

15 FM radio

Your phone is equipped with a radio ⁽¹⁾ with RDS ⁽²⁾ functionality. You can use the application as a traditional radio with saved channels or with parallel visual information related to the radio program on the display, if you tune to stations that offer Visual Radio service. You can listen to it while running other applications.

16 Recorder

Allows to make voice or sound recordings.

17 My files

You will have an access to all audio and visual files stored on phone or SD card in **My files**. You can access a number of items with this option: **Answer machine, Audio, MRE, My Music, Photos, etc.**

⁽¹⁾ The quality of the radio depends on the coverage of the radio station in that particular area.

⁽²⁾ Depending on your service provider and market.

18 Games ⁽¹⁾

Enables you to download games to your phone.

19 Alarm

Your mobile phone has a built-in alarm clock with a snooze feature.

20 Calculator

Access this feature by selecting "Calculator" from the main menu.

Enter a number, select the type of operation to be performed using the navigation keys, and enter the second number, then select "=" to display the result.

21 Calendar

Once you enter this menu, there is a monthly-view calendar for you to keep track of important meetings, appointments, etc. Days with events entered will be marked in color.

⁽¹⁾ You need to download the application to your phone for the first time. May cause additional network charges for data flow to download this application.

22 Notes.....

You can create a note in text format by accessing "Notes" from the main menu.

23 Bluetooth™

You can transfer data, such as music, to other device using Bluetooth. Search the device and accept/transfer data. The received data is automatically stored in the directory.

24 Converter

This function enables you to do conversion of weights and lengths.

25 Voice alarm

With this menu, you can create a voice file and set it as the alarm.

26 Fake call

This program enables you to call yourself by simulating a caller number/name and ringtone at a scheduled time. It helps you to politely escape from social situations at any. This call can be rejected by pressing . Activate a fake call by "Fake call mode/Enable".

27 Call filter.....

Enable blacklist: all callers on the list will be automatically blocked. Enable whitelist: only callers on the list can be connected.

28 Flashlight.....

Long press 5 to open the flashlight function.

29 WAP

Access Wap options: **Homepage, Bookmarks, Search or input URL, Last wap address, Recent pages, Stored pages, Settings.**

30 Opera Mini

This Web browser allows you to visit Websites when you are connected to the internet.

31 Profiles

With this menu, you can personalize ringtones for different events and environments.

32 Settings.....

From the main menu, select the menu icon and select the function of your choice in order to customize your telephone: **Phone settings, Call settings, Network, Connectivity, Security, Regulatory & Safety, Rights manager, Restore default⁽¹⁾, etc.**

33 Services.....

Contact your service provider to check service availability.

34 Input mode.....

This mode allows you to type a message by choosing a letter or sequence of characters associated with a key. Press the key several times until the desired letter is highlighted. When you release the key the highlighted character is inserted into the text.

ALCATEL is a trademark of Alcatel-Lucent and is used under license by TCL Communication Ltd.

All rights reserved © Copyright 2015 TCL Communication Ltd.

TCL Communication Ltd. reserves the right to alter material or technical specification without prior notice.

⁽¹⁾ Reset the phone settings to its default value. End-user data will not be erased. Enter its default password 0000 to confirm to restore and reboot.

