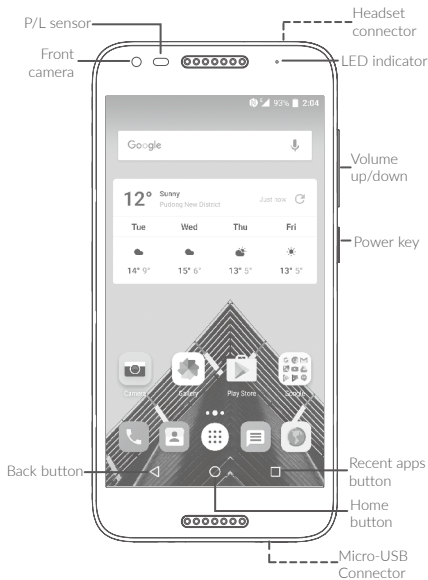


alcatel A30™

QUICK START GUIDE

Your Mobile

Keys and connectors

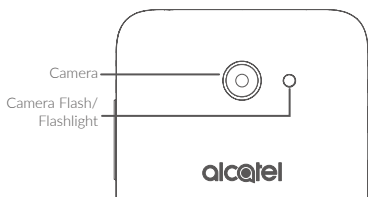


SAVE
PAPER
SAVE
TREES

PLEASE CONSIDER THE
ENVIRONMENT BEFORE PRINTING

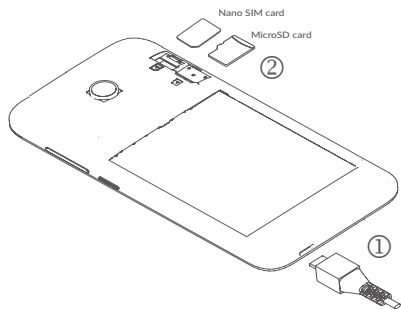


English - CJB1HED03AAA



Getting started

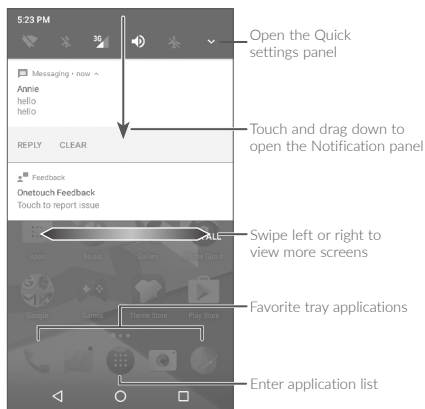
- ① Charge the battery.
- ② Insert or remove your Nano SIM card or microSD card.



Home screen


You can bring all the items (applications, shortcuts, folders, and widgets) you love or use most frequently to your Home screen for quick access.

Touching the **Home** key always takes you back to the main Home screen.




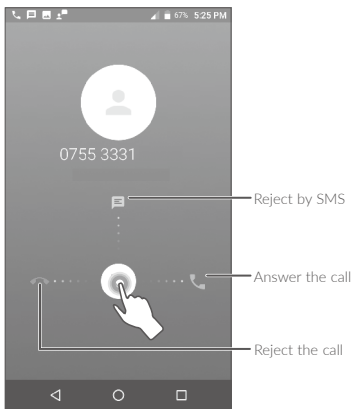
Phone call

Making a call

Enter the desired number from the keyboard and touch  to make a call.

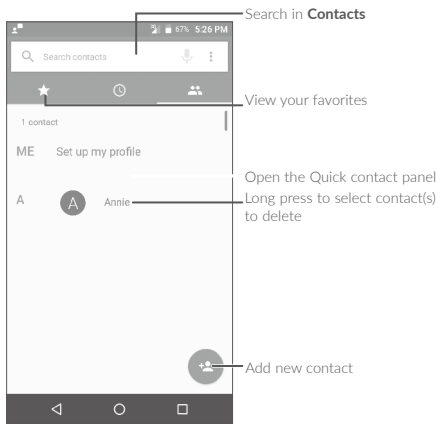
Answering a call

When you receive a call, slide  left, right, or up to:



Contacts

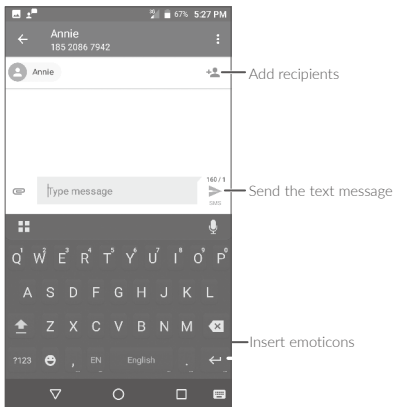
You can view and create contacts on your phone and synchronize these with your Gmail contacts or other applications on the web or on your phone.



Messaging

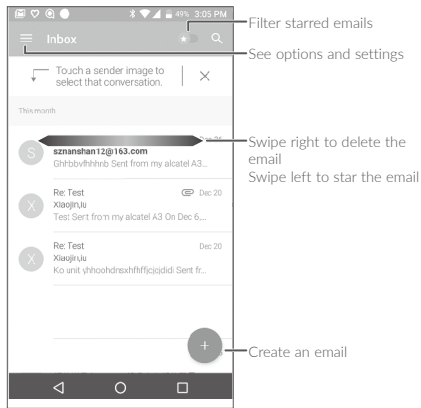
You can create, edit, and receive SMS and MMS.

An SMS will be converted to MMS automatically when media files (image, video, audio, slides, etc.) are attached or subject or email addresses are added.



Email

The first time you set up your phone, you can select to use an existing Email account or to create a new one.



Help

To get help:

- **View user manual and FAQ**

Visit www.alcatelonetouch.com

- **Update your phone's software**

Open the **Updates** application to check software updates.

- **Back up your personal data**

Go to **Settings > Backup & reset > Back up my data** and turn it on.

- **Reset your phone**

Go to **Settings > Backup & reset > Factory data reset**, and then touch **RESET PHONE**.

To get more info, you can access the **Boost & Care** application.